



Company: Extraction Oil & Gas  
Field: Weld Co., Co  
Location: Sec.14-T07N-R65W  
Well: Burroughs North #06  
Borehole: Original Hole  
Rig: Xtreme 7  
Plan: Rev 0

**PATHFINDER**  
A Schlumberger Company

#### SECTION DETAILS

Sec	MD	Inc	Azi	TVD	+N/-S	+E/-W	Dleg	TFace	Vsect	Annotation
1	0.00	0.00	0.00	0.00	0.00	0.00	0.00	0.00	0.00	
2	900.00	0.00	0.00	900.00	0.00	0.00	0.00	0.00	0.00	Begin Nudge
3	1240.05	6.80	116.66	1239.25	-9.04	18.02	2.00	116.66	-17.99	Hold Tangent
4	5931.94	6.80	116.66	5898.13	-258.31	514.58	0.00	0.00	-513.92	Begin Drop
5	6271.99	0.00	0.00	6237.38	-267.35	532.60	2.00	180.00	-531.91	Vertical Point
6	6371.99	0.00	0.00	6337.38	-267.35	532.60	0.00	0.00	-531.91	KOP, Build 9°/100' DLS
7	7371.99	90.00	270.00	6974.00	-267.35	-104.02	9.00	270.00	104.71	LP, Begin Turn
8	7515.89	90.00	271.44	6974.00	-265.55	-247.90	1.00	90.00	248.59	EOT, Hold to TD
9	17083.74	90.00	271.44	6974.00	-25.31	-9812.74	0.00	0.00	9812.77	PBHL/TD

#### WELL DETAILS: Burroughs North #06

+N/-S	+E/-W	GL 4947.00	KB @ 4963.00usft (Xtreme 7 - 16')	Longitude
0.00	0.00	Northing 1454642.65	Easting 3244018.54	40° 34' 41.070 N 104° 37' 17.479 W

#### WELLBORE TARGET DETAILS

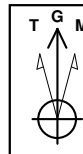
Name	TVD	+N/-S	+E/-W	Shape
KOP BN 6	6237.38	-267.35	532.60	Point
LP BN 6	6974.00	-267.35	-104.02	Point
PBHL Burroughs North 6	6974.00	-25.31	-9812.74	Point

#### FORMATION TOP DETAILS

TVDPath	MDPath	Formation
3640.00	3657.81	Parkman
4455.00	4478.59	Sussex
5860.00	5893.54	Shannon
6974.00	7371.99	Niobrara

#### CASING DETAILS

TVD	MD	Name	Size
6974.00	7371.99	7" Csg	7



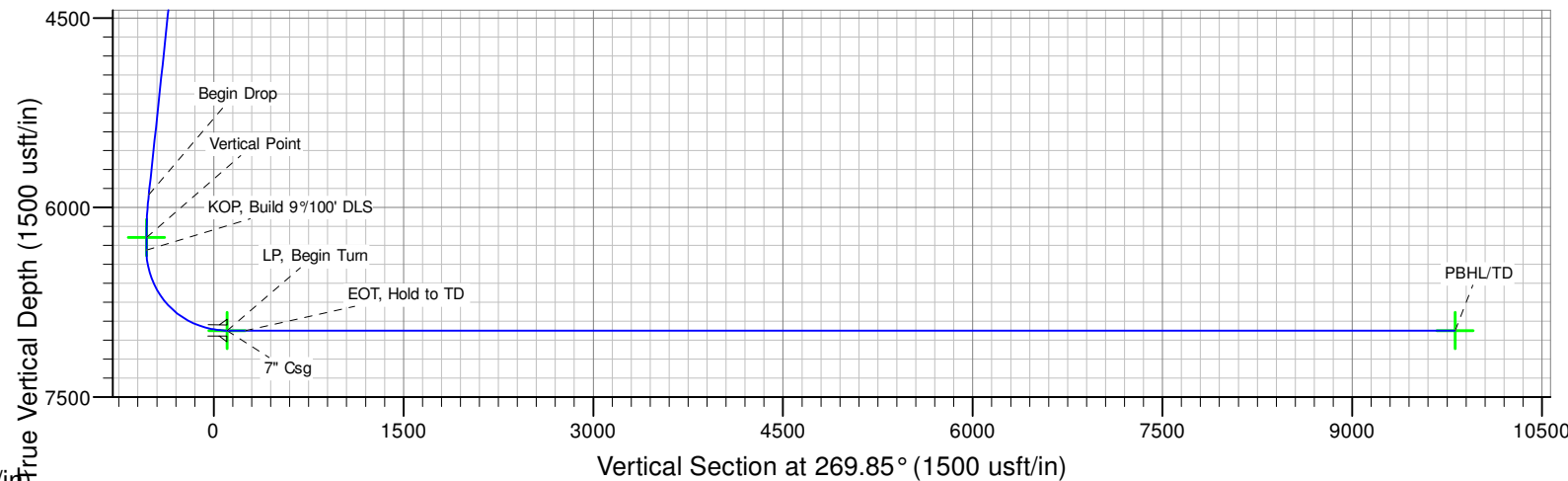
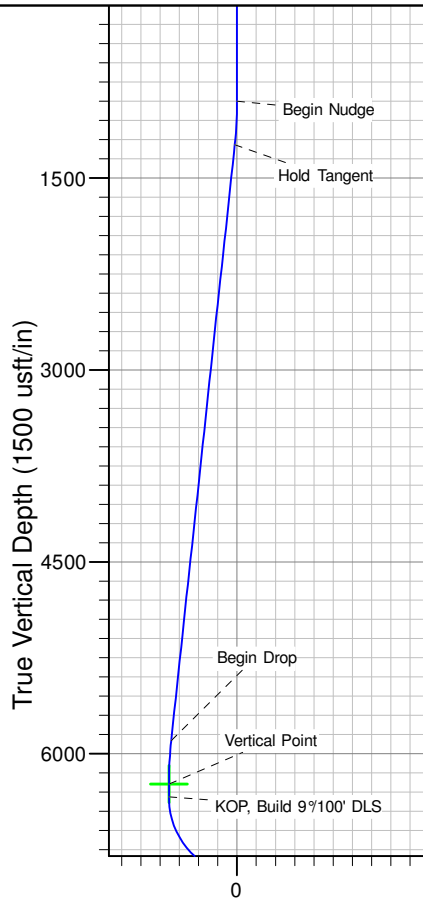
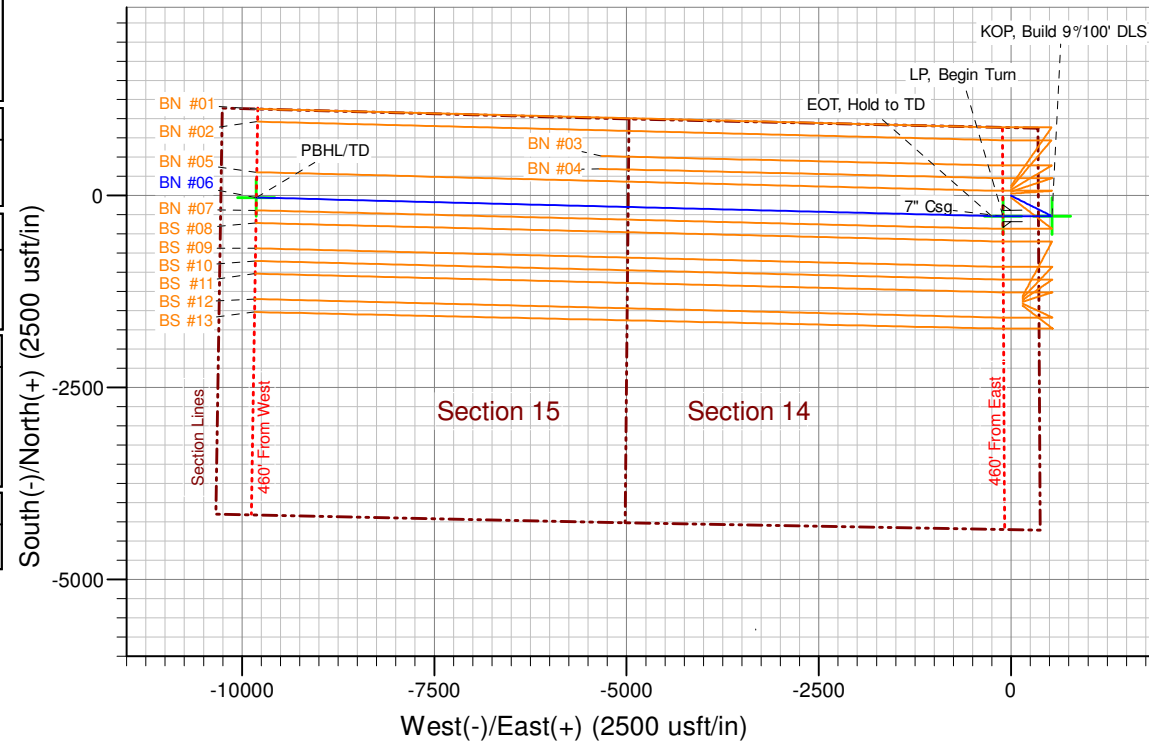
Azimuths to Grid North  
True North: -0.57°  
Magnetic North: 7.82°  
  
Magnetic Field  
Strength: 52913.3nT  
Dip Angle: 67.11°  
Date: 7/15/2014  
Model: IGRF2010

SHL: 885' FNL & 355' FEL  
(Sec.14-T07N-R65W)  
PBHL: 1155' FNL & 460' FWL  
(Sec.15-T07N-R65W)

Notice:  
Section Lines and Hardlines  
are estimates only and are  
subject to customer approval

Burroughs North #06 Rev 0

Created By: J Rieke Date: 16:05, July 16 2014





# **Extraction Oil & Gas**

**Weld Co., Co  
Sec.14-T07N-R65W  
Burroughs North #06**

**Original Hole**

**Plan: Rev 0**

## **Standard Planning Report**

**16 July, 2014**



<b>Database:</b>	EDM 5000.1 Single User Db	<b>Local Co-ordinate Reference:</b>	Well Burroughs North #06
<b>Company:</b>	Extraction Oil & Gas	<b>TVD Reference:</b>	KB @ 4963.00usft (Xtreme 7 - 16")
<b>Project:</b>	Weld Co., Co	<b>MD Reference:</b>	KB @ 4963.00usft (Xtreme 7 - 16")
<b>Site:</b>	Sec.14-T07N-R65W	<b>North Reference:</b>	Grid
<b>Well:</b>	Burroughs North #06	<b>Survey Calculation Method:</b>	Minimum Curvature
<b>Wellbore:</b>	Original Hole		
<b>Design:</b>	Rev 0		

<b>Project</b>	Weld Co., Co		
<b>Map System:</b>	US State Plane 1983	<b>System Datum:</b>	Mean Sea Level
<b>Geo Datum:</b>	North American Datum 1983		
<b>Map Zone:</b>	Colorado Northern Zone		

<b>Site</b>	Sec.14-T07N-R65W			
<b>Site Position:</b>		<b>Northing:</b>	1,454,767.97 usft	<b>Latitude:</b> 40° 34' 42.308 N
<b>From:</b>	Lat/Long	<b>Easting:</b>	3,244,017.31 usft	<b>Longitude:</b> 104° 37' 17.479 W
<b>Position Uncertainty:</b>	0.00 usft	<b>Slot Radius:</b>	13-3/16 "	<b>Grid Convergence:</b> 0.57 °

<b>Well</b>	Burroughs North #06			
<b>Well Position</b>	<b>+N/-S</b>	-125.32 usft	<b>Northing:</b>	1,454,642.65 usft
	<b>+E/-W</b>	1.24 usft	<b>Easting:</b>	3,244,018.55 usft
<b>Position Uncertainty</b>	0.00 usft	<b>Wellhead Elevation:</b>	4,963.00 usft	<b>Ground Level:</b> 4,947.00 usft

<b>Wellbore</b>	Original Hole				
<b>Magnetics</b>	<b>Model Name</b>	<b>Sample Date</b>	<b>Declination (°)</b>	<b>Dip Angle (°)</b>	<b>Field Strength (nT)</b>
	IGRF2010	7/15/2014	8.39	67.11	52,913

<b>Design</b>	Rev 0			
<b>Audit Notes:</b>				
<b>Version:</b>	<b>Phase:</b>	PROTOTYPE	<b>Tie On Depth:</b>	0.00
<b>Vertical Section:</b>	<b>Depth From (TVD) (usft)</b>	<b>+N/-S (usft)</b>	<b>+E/-W (usft)</b>	<b>Direction (°)</b>
	0.00	0.00	0.00	269.85

<b>Plan Sections</b>										
<b>Measured Depth (usft)</b>	<b>Inclination (°)</b>	<b>Azimuth (°)</b>	<b>Vertical Depth (usft)</b>	<b>+N/-S (usft)</b>	<b>+E/-W (usft)</b>	<b>Dogleg Rate (°/100usft)</b>	<b>Build Rate (°/100usft)</b>	<b>Turn Rate (°/100usft)</b>	<b>TFO (°)</b>	<b>Target</b>
0.00	0.00	0.00	0.00	0.00	0.00	0.00	0.00	0.00	0.00	
900.00	0.00	0.00	900.00	0.00	0.00	0.00	0.00	0.00	0.00	
1,240.05	6.80	116.66	1,239.25	-9.04	18.02	2.00	2.00	0.00	116.66	
5,931.94	6.80	116.66	5,898.13	-258.31	514.58	0.00	0.00	0.00	0.00	
6,271.99	0.00	0.00	6,237.38	-267.35	532.60	2.00	-2.00	0.00	180.00	KOP BN 6
6,371.99	0.00	0.00	6,337.38	-267.35	532.60	0.00	0.00	0.00	0.00	
7,371.99	90.00	270.00	6,974.00	-267.35	-104.02	9.00	9.00	0.00	270.00	LP BN 6
7,515.89	90.00	271.44	6,974.00	-265.55	-247.90	1.00	0.00	1.00	90.00	
17,083.74	90.00	271.44	6,974.00	-25.31	-9,812.74	0.00	0.00	0.00	0.00	PBHL Burroughs Nort



<b>Database:</b>	EDM 5000.1 Single User Db	<b>Local Co-ordinate Reference:</b>	Well Burroughs North #06
<b>Company:</b>	Extraction Oil & Gas	<b>TVD Reference:</b>	KB @ 4963.00usft (Xtreme 7 - 16')
<b>Project:</b>	Weld Co., Co	<b>MD Reference:</b>	KB @ 4963.00usft (Xtreme 7 - 16')
<b>Site:</b>	Sec.14-T07N-R65W	<b>North Reference:</b>	Grid
<b>Well:</b>	Burroughs North #06	<b>Survey Calculation Method:</b>	Minimum Curvature
<b>Wellbore:</b>	Original Hole		
<b>Design:</b>	Rev 0		

Planned Survey									
Measured Depth (usft)	Inclination (°)	Azimuth (°)	Vertical Depth (usft)	+N/-S (usft)	+E/-W (usft)	Vertical Section (usft)	Dogleg Rate (°/100usft)	Build Rate (°/100usft)	Turn Rate (°/100usft)
0.00	0.00	0.00	0.00	0.00	0.00	0.00	0.00	0.00	0.00
100.00	0.00	0.00	100.00	0.00	0.00	0.00	0.00	0.00	0.00
200.00	0.00	0.00	200.00	0.00	0.00	0.00	0.00	0.00	0.00
300.00	0.00	0.00	300.00	0.00	0.00	0.00	0.00	0.00	0.00
400.00	0.00	0.00	400.00	0.00	0.00	0.00	0.00	0.00	0.00
500.00	0.00	0.00	500.00	0.00	0.00	0.00	0.00	0.00	0.00
600.00	0.00	0.00	600.00	0.00	0.00	0.00	0.00	0.00	0.00
700.00	0.00	0.00	700.00	0.00	0.00	0.00	0.00	0.00	0.00
800.00	0.00	0.00	800.00	0.00	0.00	0.00	0.00	0.00	0.00
900.00	0.00	0.00	900.00	0.00	0.00	0.00	0.00	0.00	0.00
Begin Nudge									
1,000.00	2.00	116.66	999.98	-0.78	1.56	-1.56	2.00	2.00	0.00
1,100.00	4.00	116.66	1,099.84	-3.13	6.24	-6.23	2.00	2.00	0.00
1,200.00	6.00	116.66	1,199.45	-7.04	14.03	-14.01	2.00	2.00	0.00
1,240.05	6.80	116.66	1,239.25	-9.04	18.02	-17.99	2.00	2.00	0.00
Hold Tangent									
1,300.00	6.80	116.66	1,298.78	-12.23	24.36	-24.33	0.00	0.00	0.00
1,400.00	6.80	116.66	1,398.08	-17.54	34.94	-34.90	0.00	0.00	0.00
1,500.00	6.80	116.66	1,497.37	-22.85	45.53	-45.47	0.00	0.00	0.00
1,600.00	6.80	116.66	1,596.67	-28.17	56.11	-56.04	0.00	0.00	0.00
1,700.00	6.80	116.66	1,695.97	-33.48	66.69	-66.61	0.00	0.00	0.00
1,800.00	6.80	116.66	1,795.26	-38.79	77.28	-77.18	0.00	0.00	0.00
1,900.00	6.80	116.66	1,894.56	-44.10	87.86	-87.75	0.00	0.00	0.00
2,000.00	6.80	116.66	1,993.85	-49.42	98.45	-98.32	0.00	0.00	0.00
2,100.00	6.80	116.66	2,093.15	-54.73	109.03	-108.89	0.00	0.00	0.00
2,200.00	6.80	116.66	2,192.45	-60.04	119.61	-119.46	0.00	0.00	0.00
2,300.00	6.80	116.66	2,291.74	-65.35	130.20	-130.03	0.00	0.00	0.00
2,400.00	6.80	116.66	2,391.04	-70.67	140.78	-140.60	0.00	0.00	0.00
2,500.00	6.80	116.66	2,490.34	-75.98	151.36	-151.17	0.00	0.00	0.00
2,600.00	6.80	116.66	2,589.63	-81.29	161.95	-161.74	0.00	0.00	0.00
2,700.00	6.80	116.66	2,688.93	-86.61	172.53	-172.31	0.00	0.00	0.00
2,800.00	6.80	116.66	2,788.23	-91.92	183.11	-182.88	0.00	0.00	0.00
2,900.00	6.80	116.66	2,887.52	-97.23	193.70	-193.45	0.00	0.00	0.00
3,000.00	6.80	116.66	2,986.82	-102.54	204.28	-204.02	0.00	0.00	0.00
3,100.00	6.80	116.66	3,086.11	-107.86	214.86	-214.59	0.00	0.00	0.00
3,200.00	6.80	116.66	3,185.41	-113.17	225.45	-225.16	0.00	0.00	0.00
3,300.00	6.80	116.66	3,284.71	-118.48	236.03	-235.73	0.00	0.00	0.00
3,400.00	6.80	116.66	3,384.00	-123.79	246.62	-246.30	0.00	0.00	0.00
3,500.00	6.80	116.66	3,483.30	-129.11	257.20	-256.86	0.00	0.00	0.00
3,600.00	6.80	116.66	3,582.60	-134.42	267.78	-267.43	0.00	0.00	0.00
3,657.81	6.80	116.66	3,640.00	-137.49	273.90	-273.55	0.00	0.00	0.00
Parkman									
3,700.00	6.80	116.66	3,681.89	-139.73	278.37	-278.00	0.00	0.00	0.00
3,800.00	6.80	116.66	3,781.19	-145.04	288.95	-288.57	0.00	0.00	0.00
3,900.00	6.80	116.66	3,880.49	-150.36	299.53	-299.14	0.00	0.00	0.00
4,000.00	6.80	116.66	3,979.78	-155.67	310.12	-309.71	0.00	0.00	0.00
4,100.00	6.80	116.66	4,079.08	-160.98	320.70	-320.28	0.00	0.00	0.00
4,200.00	6.80	116.66	4,178.37	-166.29	331.28	-330.85	0.00	0.00	0.00
4,300.00	6.80	116.66	4,277.67	-171.61	341.87	-341.42	0.00	0.00	0.00
4,400.00	6.80	116.66	4,376.97	-176.92	352.45	-351.99	0.00	0.00	0.00
4,478.59	6.80	116.66	4,455.00	-181.10	360.77	-360.30	0.00	0.00	0.00
Sussex									
4,500.00	6.80	116.66	4,476.26	-182.23	363.03	-362.56	0.00	0.00	0.00
4,600.00	6.80	116.66	4,575.56	-187.55	373.62	-373.13	0.00	0.00	0.00



<b>Database:</b>	EDM 5000.1 Single User Db	<b>Local Co-ordinate Reference:</b>	Well Burroughs North #06
<b>Company:</b>	Extraction Oil & Gas	<b>TVD Reference:</b>	KB @ 4963.00usft (Xtreme 7 - 16')
<b>Project:</b>	Weld Co., Co	<b>MD Reference:</b>	KB @ 4963.00usft (Xtreme 7 - 16')
<b>Site:</b>	Sec.14-T07N-R65W	<b>North Reference:</b>	Grid
<b>Well:</b>	Burroughs North #06	<b>Survey Calculation Method:</b>	Minimum Curvature
<b>Wellbore:</b>	Original Hole		
<b>Design:</b>	Rev 0		

Planned Survey									
Measured Depth (usft)	Inclination (°)	Azimuth (°)	Vertical Depth (usft)	+N/-S (usft)	+E/-W (usft)	Vertical Section (usft)	Dogleg Rate (°/100usft)	Build Rate (°/100usft)	Turn Rate (°/100usft)
4,700.00	6.80	116.66	4,674.86	-192.86	384.20	-383.70	0.00	0.00	0.00
4,800.00	6.80	116.66	4,774.15	-198.17	394.78	-394.27	0.00	0.00	0.00
4,900.00	6.80	116.66	4,873.45	-203.48	405.37	-404.84	0.00	0.00	0.00
5,000.00	6.80	116.66	4,972.75	-208.80	415.95	-415.41	0.00	0.00	0.00
5,100.00	6.80	116.66	5,072.04	-214.11	426.54	-425.98	0.00	0.00	0.00
5,200.00	6.80	116.66	5,171.34	-219.42	437.12	-436.55	0.00	0.00	0.00
5,300.00	6.80	116.66	5,270.63	-224.73	447.70	-447.12	0.00	0.00	0.00
5,400.00	6.80	116.66	5,369.93	-230.05	458.29	-457.69	0.00	0.00	0.00
5,500.00	6.80	116.66	5,469.23	-235.36	468.87	-468.26	0.00	0.00	0.00
5,600.00	6.80	116.66	5,568.52	-240.67	479.45	-478.83	0.00	0.00	0.00
5,700.00	6.80	116.66	5,667.82	-245.98	490.04	-489.40	0.00	0.00	0.00
5,800.00	6.80	116.66	5,767.12	-251.30	500.62	-499.97	0.00	0.00	0.00
5,893.54	6.80	116.66	5,860.00	-256.27	510.52	-509.86	0.00	0.00	0.00
Shannon									
5,900.00	6.80	116.66	5,866.41	-256.61	511.20	-510.54	0.00	0.00	0.00
5,931.94	6.80	116.66	5,898.13	-258.31	514.58	-513.92	0.00	0.00	0.00
Begin Drop									
6,000.00	5.44	116.66	5,965.80	-261.56	521.07	-520.39	2.00	-2.00	0.00
6,100.00	3.44	116.66	6,065.49	-265.03	527.99	-527.30	2.00	-2.00	0.00
6,200.00	1.44	116.66	6,165.40	-266.94	531.79	-531.10	2.00	-2.00	0.00
6,271.99	0.00	0.00	6,237.38	-267.35	532.60	-531.91	2.00	-2.00	0.00
Vertical Point									
6,300.00	0.00	0.00	6,265.39	-267.35	532.60	-531.91	0.00	0.00	0.00
6,371.99	0.00	0.00	6,337.38	-267.35	532.60	-531.91	0.00	0.00	0.00
KOP, Build 9°/100' DLS									
6,400.00	2.52	270.00	6,365.38	-267.35	531.98	-531.29	9.00	9.00	0.00
6,500.00	11.52	270.00	6,464.53	-267.35	519.77	-519.08	9.00	9.00	0.00
6,600.00	20.52	270.00	6,560.55	-267.35	492.20	-491.51	9.00	9.00	0.00
6,700.00	29.52	270.00	6,651.07	-267.35	449.95	-449.26	9.00	9.00	0.00
6,800.00	38.52	270.00	6,733.87	-267.35	394.06	-393.37	9.00	9.00	0.00
6,900.00	47.52	270.00	6,806.90	-267.35	325.90	-325.21	9.00	9.00	0.00
7,000.00	56.52	270.00	6,868.38	-267.35	247.16	-246.47	9.00	9.00	0.00
7,100.00	65.52	270.00	6,916.78	-267.35	159.77	-159.08	9.00	9.00	0.00
7,200.00	74.52	270.00	6,950.91	-267.35	65.89	-65.20	9.00	9.00	0.00
7,300.00	83.52	270.00	6,969.93	-267.35	-32.18	32.87	9.00	9.00	0.00
7,371.99	90.00	270.00	6,974.00	-267.35	-104.02	104.71	9.00	9.00	0.00
LP, Begin Turn - Niobrara - 7" Csg									
7,400.00	90.00	270.28	6,974.00	-267.28	-132.03	132.72	1.00	0.00	1.00
7,500.00	90.00	271.28	6,974.00	-265.92	-232.02	232.70	1.00	0.00	1.00
7,515.89	90.00	271.44	6,974.00	-265.55	-247.90	248.59	1.00	0.00	1.00
EOT, Hold to TD									
7,600.00	90.00	271.44	6,974.00	-263.43	-331.99	332.67	0.00	0.00	0.00
7,700.00	90.00	271.44	6,974.00	-260.92	-431.96	432.63	0.00	0.00	0.00
7,800.00	90.00	271.44	6,974.00	-258.41	-531.92	532.59	0.00	0.00	0.00
7,900.00	90.00	271.44	6,974.00	-255.90	-631.89	632.55	0.00	0.00	0.00
8,000.00	90.00	271.44	6,974.00	-253.39	-731.86	732.51	0.00	0.00	0.00
8,100.00	90.00	271.44	6,974.00	-250.88	-831.83	832.47	0.00	0.00	0.00
8,200.00	90.00	271.44	6,974.00	-248.37	-931.80	932.44	0.00	0.00	0.00
8,300.00	90.00	271.44	6,974.00	-245.86	-1,031.77	1,032.40	0.00	0.00	0.00
8,400.00	90.00	271.44	6,974.00	-243.35	-1,131.74	1,132.36	0.00	0.00	0.00
8,500.00	90.00	271.44	6,974.00	-240.84	-1,231.70	1,232.32	0.00	0.00	0.00
8,600.00	90.00	271.44	6,974.00	-238.32	-1,331.67	1,332.28	0.00	0.00	0.00
8,700.00	90.00	271.44	6,974.00	-235.81	-1,431.64	1,432.24	0.00	0.00	0.00



<b>Database:</b>	EDM 5000.1 Single User Db	<b>Local Co-ordinate Reference:</b>	Well Burroughs North #06
<b>Company:</b>	Extraction Oil & Gas	<b>TVD Reference:</b>	KB @ 4963.00usft (Xtreme 7 - 16')
<b>Project:</b>	Weld Co., Co	<b>MD Reference:</b>	KB @ 4963.00usft (Xtreme 7 - 16')
<b>Site:</b>	Sec.14-T07N-R65W	<b>North Reference:</b>	Grid
<b>Well:</b>	Burroughs North #06	<b>Survey Calculation Method:</b>	Minimum Curvature
<b>Wellbore:</b>	Original Hole		
<b>Design:</b>	Rev 0		

Planned Survey										
Measured Depth (usft)	Inclination (°)	Azimuth (°)	Vertical Depth (usft)	+N/-S (usft)	+E/-W (usft)	Vertical Section (usft)	Dogleg Rate (°/100usft)	Build Rate (°/100usft)	Turn Rate (°/100usft)	
8,800.00	90.00	271.44	6,974.00	-233.30	-1,531.61	1,532.21	0.00	0.00	0.00	
8,900.00	90.00	271.44	6,974.00	-230.79	-1,631.58	1,632.17	0.00	0.00	0.00	
9,000.00	90.00	271.44	6,974.00	-228.28	-1,731.55	1,732.13	0.00	0.00	0.00	
9,100.00	90.00	271.44	6,974.00	-225.77	-1,831.51	1,832.09	0.00	0.00	0.00	
9,200.00	90.00	271.44	6,974.00	-223.26	-1,931.48	1,932.05	0.00	0.00	0.00	
9,300.00	90.00	271.44	6,974.00	-220.75	-2,031.45	2,032.01	0.00	0.00	0.00	
9,400.00	90.00	271.44	6,974.00	-218.24	-2,131.42	2,131.98	0.00	0.00	0.00	
9,500.00	90.00	271.44	6,974.00	-215.73	-2,231.39	2,231.94	0.00	0.00	0.00	
9,600.00	90.00	271.44	6,974.00	-213.22	-2,331.36	2,331.90	0.00	0.00	0.00	
9,700.00	90.00	271.44	6,974.00	-210.70	-2,431.33	2,431.86	0.00	0.00	0.00	
9,800.00	90.00	271.44	6,974.00	-208.19	-2,531.29	2,531.82	0.00	0.00	0.00	
9,900.00	90.00	271.44	6,974.00	-205.68	-2,631.26	2,631.78	0.00	0.00	0.00	
10,000.00	90.00	271.44	6,974.00	-203.17	-2,731.23	2,731.75	0.00	0.00	0.00	
10,100.00	90.00	271.44	6,974.00	-200.66	-2,831.20	2,831.71	0.00	0.00	0.00	
10,200.00	90.00	271.44	6,974.00	-198.15	-2,931.17	2,931.67	0.00	0.00	0.00	
10,300.00	90.00	271.44	6,974.00	-195.64	-3,031.14	3,031.63	0.00	0.00	0.00	
10,400.00	90.00	271.44	6,974.00	-193.13	-3,131.10	3,131.59	0.00	0.00	0.00	
10,500.00	90.00	271.44	6,974.00	-190.62	-3,231.07	3,231.55	0.00	0.00	0.00	
10,600.00	90.00	271.44	6,974.00	-188.11	-3,331.04	3,331.52	0.00	0.00	0.00	
10,700.00	90.00	271.44	6,974.00	-185.60	-3,431.01	3,431.48	0.00	0.00	0.00	
10,800.00	90.00	271.44	6,974.00	-183.08	-3,530.98	3,531.44	0.00	0.00	0.00	
10,900.00	90.00	271.44	6,974.00	-180.57	-3,630.95	3,631.40	0.00	0.00	0.00	
11,000.00	90.00	271.44	6,974.00	-178.06	-3,730.92	3,731.36	0.00	0.00	0.00	
11,100.00	90.00	271.44	6,974.00	-175.55	-3,830.88	3,831.32	0.00	0.00	0.00	
11,200.00	90.00	271.44	6,974.00	-173.04	-3,930.85	3,931.29	0.00	0.00	0.00	
11,300.00	90.00	271.44	6,974.00	-170.53	-4,030.82	4,031.25	0.00	0.00	0.00	
11,400.00	90.00	271.44	6,974.00	-168.02	-4,130.79	4,131.21	0.00	0.00	0.00	
11,500.00	90.00	271.44	6,974.00	-165.51	-4,230.76	4,231.17	0.00	0.00	0.00	
11,600.00	90.00	271.44	6,974.00	-163.00	-4,330.73	4,331.13	0.00	0.00	0.00	
11,700.00	90.00	271.44	6,974.00	-160.49	-4,430.69	4,431.09	0.00	0.00	0.00	
11,800.00	90.00	271.44	6,974.00	-157.98	-4,530.66	4,531.06	0.00	0.00	0.00	
11,900.00	90.00	271.44	6,974.00	-155.46	-4,630.63	4,631.02	0.00	0.00	0.00	
12,000.00	90.00	271.44	6,974.00	-152.95	-4,730.60	4,730.98	0.00	0.00	0.00	
12,100.00	90.00	271.44	6,974.00	-150.44	-4,830.57	4,830.94	0.00	0.00	0.00	
12,200.00	90.00	271.44	6,974.00	-147.93	-4,930.54	4,930.90	0.00	0.00	0.00	
12,300.00	90.00	271.44	6,974.00	-145.42	-5,030.51	5,030.86	0.00	0.00	0.00	
12,400.00	90.00	271.44	6,974.00	-142.91	-5,130.47	5,130.83	0.00	0.00	0.00	
12,500.00	90.00	271.44	6,974.00	-140.40	-5,230.44	5,230.79	0.00	0.00	0.00	
12,600.00	90.00	271.44	6,974.00	-137.89	-5,330.41	5,330.75	0.00	0.00	0.00	
12,700.00	90.00	271.44	6,974.00	-135.38	-5,430.38	5,430.71	0.00	0.00	0.00	
12,800.00	90.00	271.44	6,974.00	-132.87	-5,530.35	5,530.67	0.00	0.00	0.00	
12,900.00	90.00	271.44	6,974.00	-130.36	-5,630.32	5,630.63	0.00	0.00	0.00	
13,000.00	90.00	271.44	6,974.00	-127.84	-5,730.29	5,730.60	0.00	0.00	0.00	
13,100.00	90.00	271.44	6,974.00	-125.33	-5,830.25	5,830.56	0.00	0.00	0.00	
13,200.00	90.00	271.44	6,974.00	-122.82	-5,930.22	5,930.52	0.00	0.00	0.00	
13,300.00	90.00	271.44	6,974.00	-120.31	-6,030.19	6,030.48	0.00	0.00	0.00	
13,400.00	90.00	271.44	6,974.00	-117.80	-6,130.16	6,130.44	0.00	0.00	0.00	
13,500.00	90.00	271.44	6,974.00	-115.29	-6,230.13	6,230.40	0.00	0.00	0.00	
13,600.00	90.00	271.44	6,974.00	-112.78	-6,330.10	6,330.37	0.00	0.00	0.00	
13,700.00	90.00	271.44	6,974.00	-110.27	-6,430.06	6,430.33	0.00	0.00	0.00	
13,800.00	90.00	271.44	6,974.00	-107.76	-6,530.03	6,530.29	0.00	0.00	0.00	
13,900.00	90.00	271.44	6,974.00	-105.25	-6,630.00	6,630.25	0.00	0.00	0.00	
14,000.00	90.00	271.44	6,974.00	-102.74	-6,729.97	6,730.21	0.00	0.00	0.00	
14,100.00	90.00	271.44	6,974.00	-100.22	-6,829.94	6,830.17	0.00	0.00	0.00	



<b>Database:</b>	EDM 5000.1 Single User Db	<b>Local Co-ordinate Reference:</b>	Well Burroughs North #06
<b>Company:</b>	Extraction Oil & Gas	<b>TVD Reference:</b>	KB @ 4963.00usft (Xtreme 7 - 16')
<b>Project:</b>	Weld Co., Co	<b>MD Reference:</b>	KB @ 4963.00usft (Xtreme 7 - 16')
<b>Site:</b>	Sec.14-T07N-R65W	<b>North Reference:</b>	Grid
<b>Well:</b>	Burroughs North #06	<b>Survey Calculation Method:</b>	Minimum Curvature
<b>Wellbore:</b>	Original Hole		
<b>Design:</b>	Rev 0		

Planned Survey										
Measured Depth (usft)	Inclination (°)	Azimuth (°)	Vertical Depth (usft)	+N/-S (usft)	+E/-W (usft)	Vertical Section (usft)	Dogleg Rate (°/100usft)	Build Rate (°/100usft)	Turn Rate (°/100usft)	
14,200.00	90.00	271.44	6,974.00	-97.71	-6,929.91	6,930.14	0.00	0.00	0.00	
14,300.00	90.00	271.44	6,974.00	-95.20	-7,029.88	7,030.10	0.00	0.00	0.00	
14,400.00	90.00	271.44	6,974.00	-92.69	-7,129.84	7,130.06	0.00	0.00	0.00	
14,500.00	90.00	271.44	6,974.00	-90.18	-7,229.81	7,230.02	0.00	0.00	0.00	
14,600.00	90.00	271.44	6,974.00	-87.67	-7,329.78	7,329.98	0.00	0.00	0.00	
14,700.00	90.00	271.44	6,974.00	-85.16	-7,429.75	7,429.94	0.00	0.00	0.00	
14,800.00	90.00	271.44	6,974.00	-82.65	-7,529.72	7,529.91	0.00	0.00	0.00	
14,900.00	90.00	271.44	6,974.00	-80.14	-7,629.69	7,629.87	0.00	0.00	0.00	
15,000.00	90.00	271.44	6,974.00	-77.63	-7,729.65	7,729.83	0.00	0.00	0.00	
15,100.00	90.00	271.44	6,974.00	-75.12	-7,829.62	7,829.79	0.00	0.00	0.00	
15,200.00	90.00	271.44	6,974.00	-72.60	-7,929.59	7,929.75	0.00	0.00	0.00	
15,300.00	90.00	271.44	6,974.00	-70.09	-8,029.56	8,029.71	0.00	0.00	0.00	
15,400.00	90.00	271.44	6,974.00	-67.58	-8,129.53	8,129.68	0.00	0.00	0.00	
15,500.00	90.00	271.44	6,974.00	-65.07	-8,229.50	8,229.64	0.00	0.00	0.00	
15,600.00	90.00	271.44	6,974.00	-62.56	-8,329.47	8,329.60	0.00	0.00	0.00	
15,700.00	90.00	271.44	6,974.00	-60.05	-8,429.43	8,429.56	0.00	0.00	0.00	
15,800.00	90.00	271.44	6,974.00	-57.54	-8,529.40	8,529.52	0.00	0.00	0.00	
15,900.00	90.00	271.44	6,974.00	-55.03	-8,629.37	8,629.48	0.00	0.00	0.00	
16,000.00	90.00	271.44	6,974.00	-52.52	-8,729.34	8,729.45	0.00	0.00	0.00	
16,100.00	90.00	271.44	6,974.00	-50.01	-8,829.31	8,829.41	0.00	0.00	0.00	
16,200.00	90.00	271.44	6,974.00	-47.50	-8,929.28	8,929.37	0.00	0.00	0.00	
16,300.00	90.00	271.44	6,974.00	-44.98	-9,029.24	9,029.33	0.00	0.00	0.00	
16,400.00	90.00	271.44	6,974.00	-42.47	-9,129.21	9,129.29	0.00	0.00	0.00	
16,500.00	90.00	271.44	6,974.00	-39.96	-9,229.18	9,229.25	0.00	0.00	0.00	
16,600.00	90.00	271.44	6,974.00	-37.45	-9,329.15	9,329.22	0.00	0.00	0.00	
16,700.00	90.00	271.44	6,974.00	-34.94	-9,429.12	9,429.18	0.00	0.00	0.00	
16,800.00	90.00	271.44	6,974.00	-32.43	-9,529.09	9,529.14	0.00	0.00	0.00	
16,900.00	90.00	271.44	6,974.00	-29.92	-9,629.06	9,629.10	0.00	0.00	0.00	
17,000.00	90.00	271.44	6,974.00	-27.41	-9,729.02	9,729.06	0.00	0.00	0.00	
17,083.74	90.00	271.44	6,974.00	-25.31	-9,812.74	9,812.77	0.00	0.00	0.00	
PBHL/TD										

Design Targets									
Target Name	Dip Angle (°)	Dip Dir. (°)	TVD (usft)	+N/-S (usft)	+E/-W (usft)	Northing (usft)	Easting (usft)	Latitude Longitude	
- hit/miss target									
- Shape									
KOP BN 6	0.00	0.00	6,237.38	-267.35	532.60	1,454,375.30	3,244,551.15	40° 34' 38.376 N	104° 37' 10.611 W
- plan hits target center									
- Point									
LP BN 6	0.00	0.00	6,974.00	-267.35	-104.02	1,454,375.30	3,243,914.52	40° 34' 38.438 N	104° 37' 18.862 W
- plan hits target center									
- Point									
PBHL Burroughs North 6	0.00	0.00	6,974.00	-25.31	-9,812.74	1,454,617.34	3,234,205.81	40° 34' 41.761 N	104° 39' 24.649 W
- plan hits target center									
- Point									



<b>Database:</b>	EDM 5000.1 Single User Db	<b>Local Co-ordinate Reference:</b>	Well Burroughs North #06
<b>Company:</b>	Extraction Oil & Gas	<b>TVD Reference:</b>	KB @ 4963.00usft (Xtreme 7 - 16')
<b>Project:</b>	Weld Co., Co	<b>MD Reference:</b>	KB @ 4963.00usft (Xtreme 7 - 16')
<b>Site:</b>	Sec.14-T07N-R65W	<b>North Reference:</b>	Grid
<b>Well:</b>	Burroughs North #06	<b>Survey Calculation Method:</b>	Minimum Curvature
<b>Wellbore:</b>	Original Hole		
<b>Design:</b>	Rev 0		

Casing Points					
Measured Depth (usft)	Vertical Depth (usft)	Name		Casing Diameter (")	Hole Diameter (")
7,371.99	6,974.00	7" Csg		7	7-1/2

Measured Depth (usft)	Vertical Depth (usft)	Name	Lithology	Dip (°)	Dip Direction (°)
3,657.81	3,640.00	Parkman		0.00	
4,478.59	4,455.00	Sussex		0.00	
5,893.54	5,860.00	Shannon		0.00	
7,371.99	6,974.00	Niobrara		0.00	

Plan Annotations					
Measured Depth (usft)	Vertical Depth (usft)	Local Coordinates			
		+N/-S (usft)	+E/-W (usft)	Comment	
900.00	900.00	0.00	0.00	Begin Nudge	
1,240.05	1,239.25	-9.04	18.02	Hold Tangent	
5,931.94	5,898.13	-258.31	514.58	Begin Drop	
6,271.99	6,237.38	-267.35	532.60	Vertical Point	
6,371.99	6,337.38	-267.35	532.60	KOP, Build 9°/100' DLS	
7,371.99	6,974.00	-267.35	-104.02	LP, Begin Turn	
7,515.89	6,974.00	-265.55	-247.90	EOT, Hold to TD	
17,083.74	6,974.00	-25.31	-9,812.74	PBHL/TD	