

T7N, R65W, 6th P.M.

EXTRACTION OIL & GAS

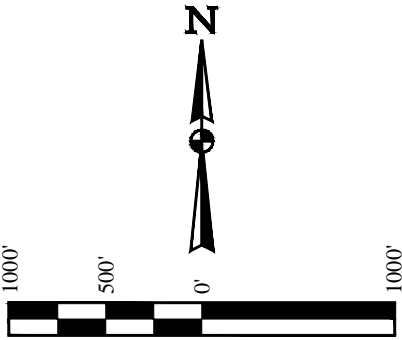
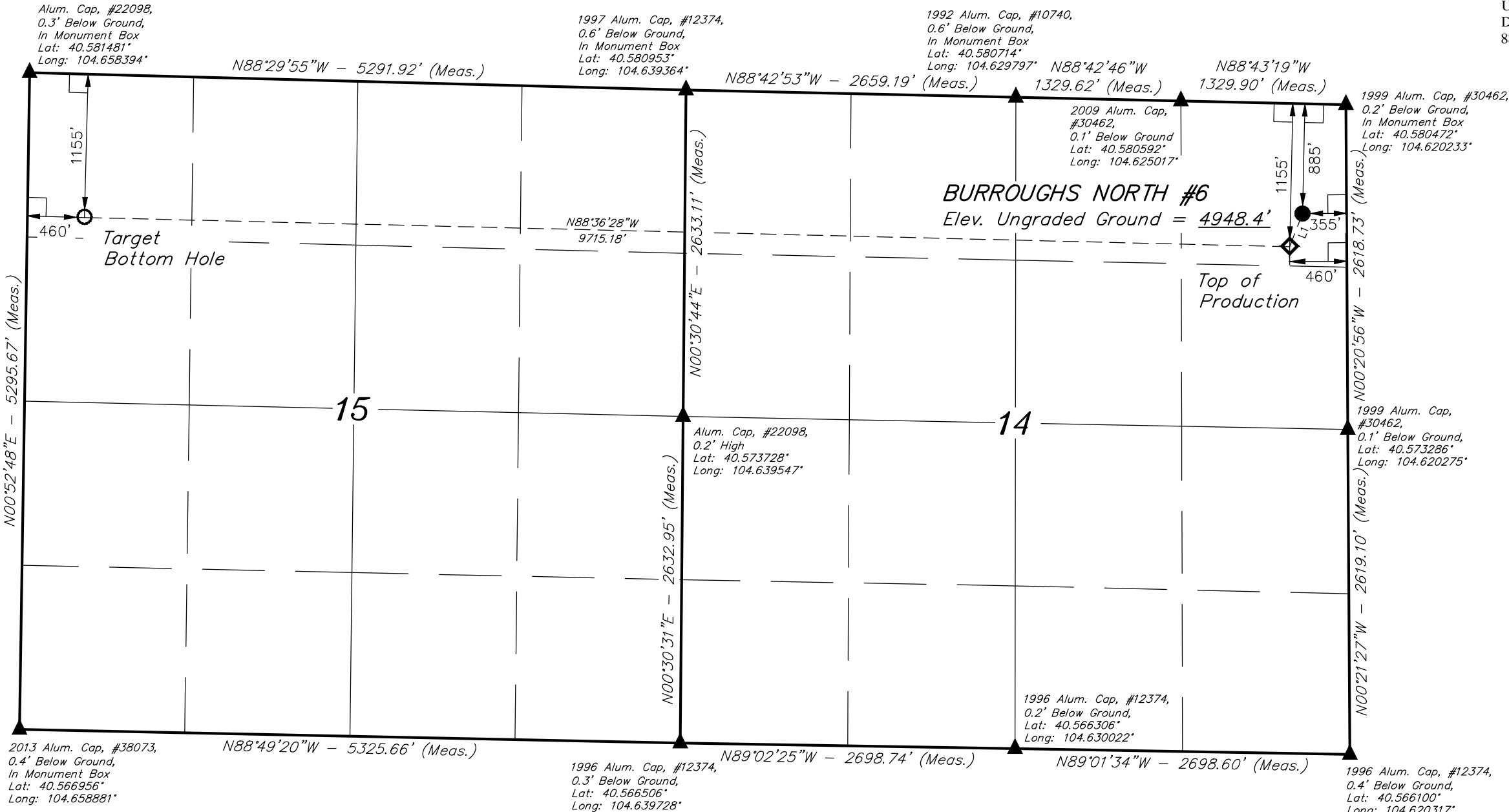
BURROUGHS NORTH #6  
NE 1/4 NE 1/4, SECTION 14, T7N, R65W, 6th P.M.  
WELD COUNTY, COLORADO

BASIS OF BEARINGS

BASIS OF BEARINGS IS A G.P.S. OBSERVATION

BASIS OF ELEVATION

USGS COOPERATIVE BASE NETWORK CONTROL STATION,  
DESIGNATION 'VERMILYEA'. NGS DATA SHEET LISTS THE NAVD  
88 ELEVATION AS BEING 5026 FEET.



LINE TABLE		
LINE	DIRECTION	LENGTH
L1	S21°08'16"W	287.18'

CERTIFICATE

THIS IS TO CERTIFY THAT THE ABOVE PLAT WAS PREPARED FROM FIELD NOTES OF ACTUAL SURVEYS MADE BY ME OR UNDER MY SUPERVISION, AND THAT THE SAME ARE TRUE AND CORRECT TO THE BEST OF MY KNOWLEDGE AND BELIEF.

REGISTERED LAND SURVEYOR  
REGISTRATION NO. 28285  
STATE OF COLORADO

UELS, LLC  
Corporate Office \* 85 South 200 East  
Vernal, UT 84078 \* (435) 789-1017



PDOP = 1.8

LEGEND:

- 90° SYMBOL
- PROPOSED WELLHEAD.
- TARGET BOTTOM HOLE.
- SECTION CORNERS LOCATED.
- TOP OF PRODUCTION.

NAD 83 (TARGET BOTTOM HOLE)	NAD 83 (TOP OF PRODUCTION)	NAD 83 (SURFACE LOCATION)
LATITUDE = 40°34'41.76" (40.578267)	LATITUDE = 40°34'38.44" (40.577344)	LATITUDE = 40°34'41.07" (40.578075)
LONGITUDE = 104°39'24.65" (104.656847)	LONGITUDE = 104°37'18.86" (104.621906)	LONGITUDE = 104°37'17.48" (104.621522)
NAD 27 (TARGET BOTTOM HOLE)	NAD 27 (TOP OF PRODUCTION)	NAD 27 (SURFACE LOCATION)
LATITUDE = 40°34'41.83" (40.578286)	LATITUDE = 40°34'38.51" (40.577364)	LATITUDE = 40°34'41.14" (40.578094)
LONGITUDE = 104°39'22.78" (104.656328)	LONGITUDE = 104°37'17.00" (104.621389)	LONGITUDE = 104°37'15.62" (104.621006)

SURVEYED BY: DALLAS NIELSEN, L.P.	DATE: 06-04-14
DRAWN BY: K.B.	DATE DRAWN: 06-30-14
SCALE: 1" = 1000'	REVISED: 00-00-00
WELL LOCATION PLAT	