

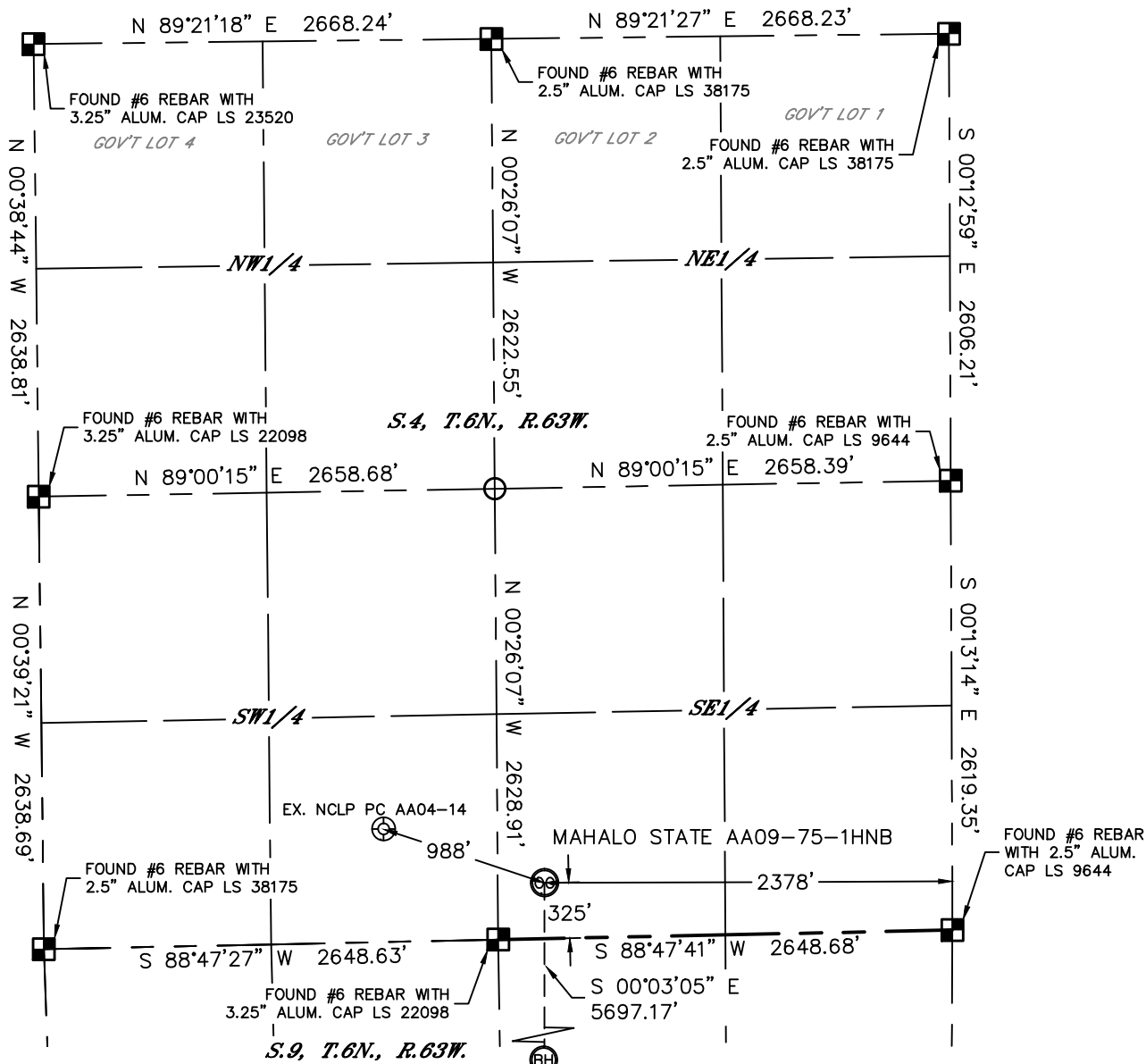


Lat40°, Inc. 1635 Foxtrail Drive, Suite 325 Loveland, CO 970-776-3321

WELL LOCATION CERTIFICATE

THIS MAP DOES NOT REPRESENT A BOUNDARY SURVEY

SECTION: 4
TOWNSHIP: 6N
RANGE: 63W



In accordance with a request from Cody Ball with Noble Energy Inc. Lat40°, Inc. has determined the surface location of the MAHALO STATE AA09-75-1HNB to be 325' from the SOUTH line and 2378' from the EAST line as measured at right angles from the section lines of Section 4, Township 6 North, Range 63 West and the bottom hole to be 30' from the NORTH line and 2345' from the EAST line as measured at right angles from the section lines of Section 16, Township 6 North, Range 63 West of the Sixth Principal Meridian, County of Weld, State of Colorado.

I hereby state that this Well Location Certificate was prepared by me, or under my direct supervision, that the fieldwork was completed on 8/9/2013, for and on behalf of Noble Energy Inc. That this is not a Land Survey Plat or an Improvement Survey Plat, and that it is not to be relied upon for establishment of fence, building, or other future improvement lines.

NOTE:

- 1) Bearings shown are Grid Bearings of the Colorado State Plane Coordinate System, North Zone, North American Datum 1983/2007. The lineal dimensions as contained herein are based upon the "U.S. Survey Foot."
 - 2) Ground elevations are based on an observed GPS elevation (NAVD 1988 DATUM).
 - 3) IMPROVEMENTS: See LOCATION DRAWING for all visible improvements within 500' of disturbed area.
 - 4) SURFACE USE: RANGELAND
 - 5) INSTRUMENT OPERATOR: BRIAN ROTTINGHAUS
 - 6) NEAREST EXISTING WELL: NCLP PC AA04-14, 988'
- NEAREST CULTURAL ITEMS:
BUILDING: ±3284' SE
BUILDING UNIT: ±3284' SE
HIGH OCCUPANCY BUILDING UNIT: 5280'+
DESIGNATED OUTSIDE ACTIVITY AREA: 5280'+
PUBLIC ROAD: 1621' SE
ABOVE GROUND UTILITY: 1562' SE
RAILROAD: 5280'+
PROPERTY LINE: 272' W

SURFACE LOCATION
LAT: 40.50949°N
LONG: 104.44072°W
PDOP: 2.0
ELEV: 4694'
1/4,1/4: SW1/4SE1/4

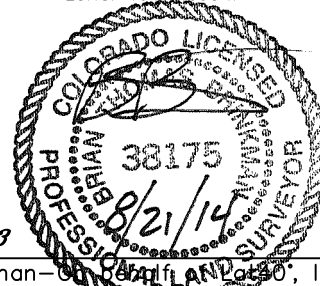
BOTTOM HOLE
LAT: 40.49385°N
LONG: 104.44095°W

LEGEND

- = ALIQUOT MONUMENT AS DESCRIBED
○ = CALCULATED POSITION

SHEET 1 OF 3

Brian T. Brinkman—Lat40°, Inc.
Colorado Licensed Professional Land Surveyor No. 38175
DATE: 8/20/2014
PROJECT#: 2013042



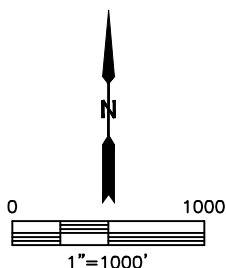
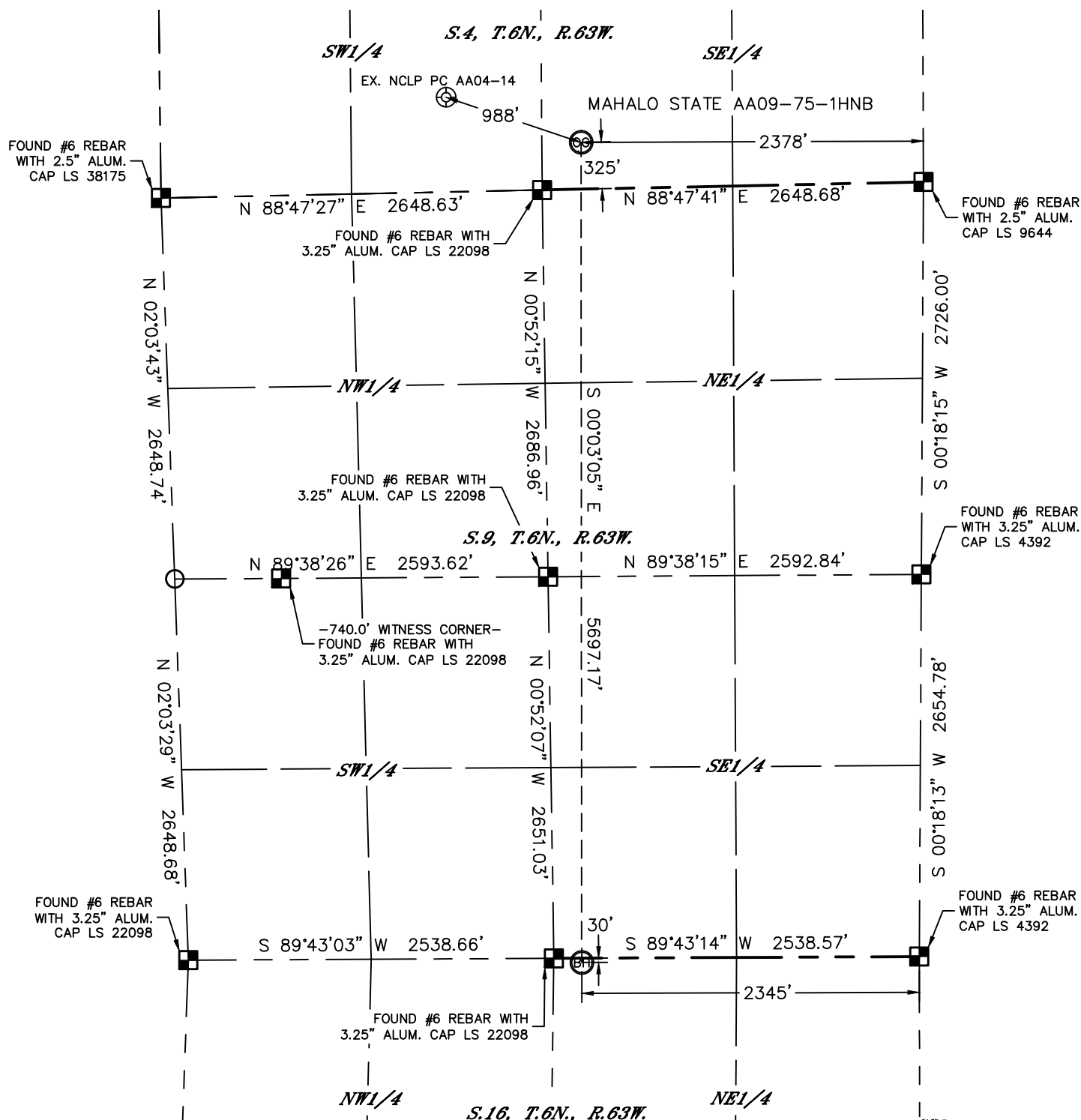


Lat40°, Inc. 1635 Foxtrail Drive, Suite 325 Loveland, CO 970-776-3321

WELL LOCATION CERTIFICATE

THIS MAP DOES NOT REPRESENT A BOUNDARY SURVEY

SECTION: 4
TOWNSHIP: 6N
RANGE: 63W

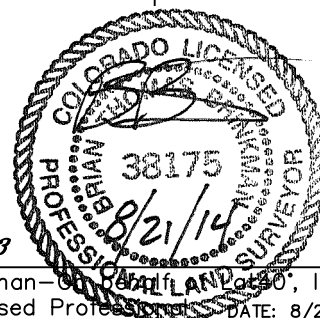


LEGEND

- = ALIQUOT MONUMENT AS DESCRIBED
- = CALCULATED POSITION

SHEET 2 OF 3

Brian T. Brinkman—
Colorado Licensed Professional Land Surveyor No. 38175
DATE: 8/20/2014
PROJECT#: 2013042





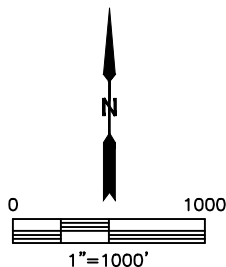
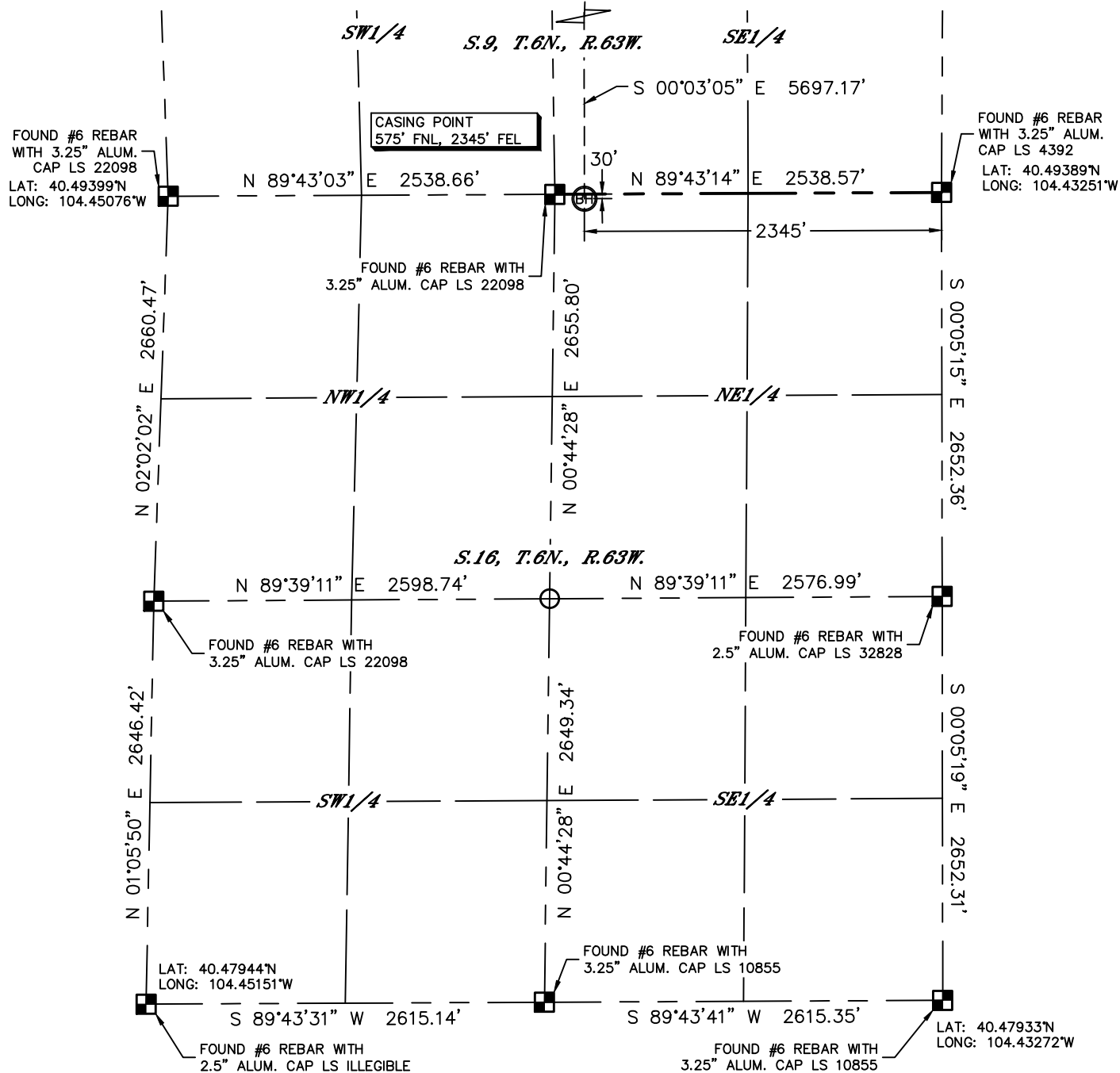
Lat40°, Inc. 1635 Foxtrail Drive, Suite 325 Loveland, CO 970-776-3321

LATITUDE & LONGITUDE EXHIBIT

THIS MAP DOES NOT REPRESENT A BOUNDARY SURVEY

SECTION: 4
TOWNSHIP: 6N
RANGE: 63W

MAHALO STATE AA09-75-1HNB



LEGEND

- = ALIQUOT MONUMENT AS DESCRIBED
- = CALCULATED POSITION

SHEET 3 OF 3

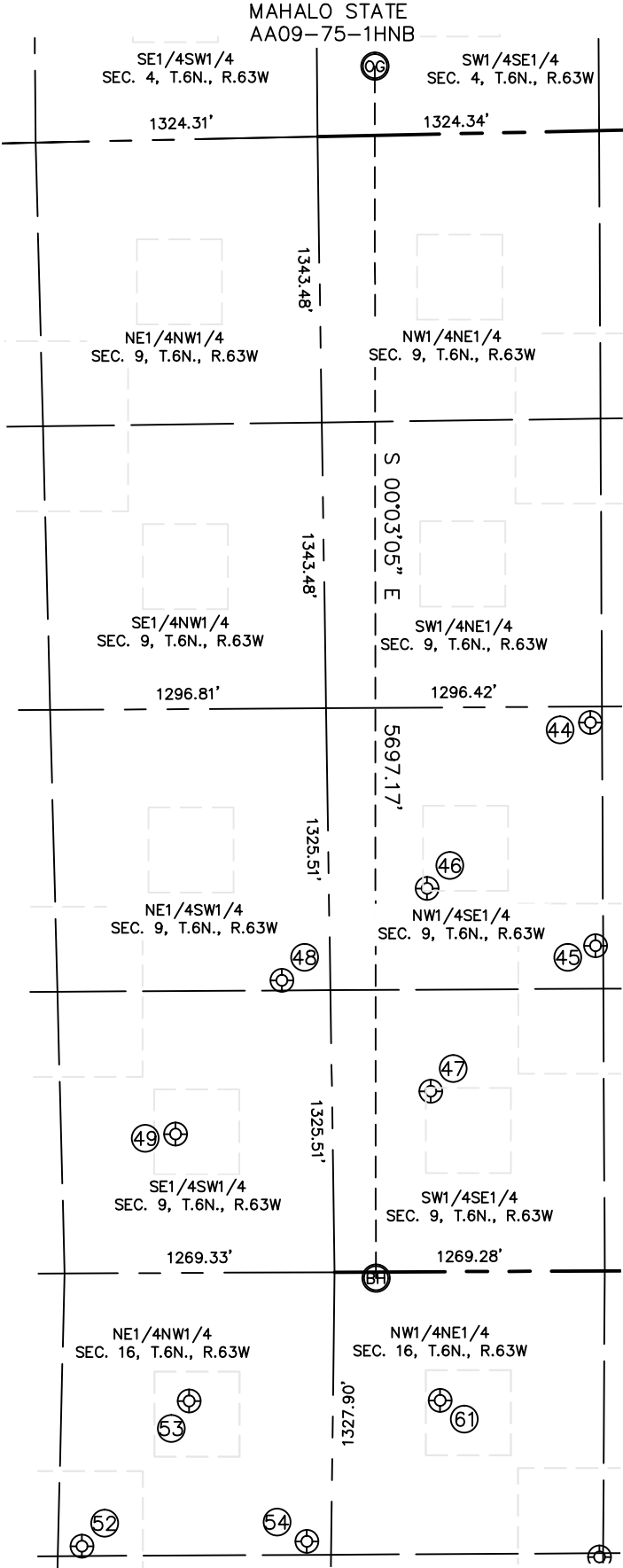
DATE: 8/20/2014
PROJECT#: 2013042



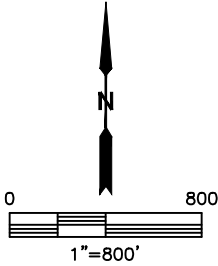
Lat40°, Inc. 1635 Foxtrail Drive, Suite 325 Loveland, CO 970-776-3321

SITE SKETCH
MAHALO STATE AA09-75-1HNB

SECTION: 4
TOWNSHIP: 6N
RANGE: 63W



WELL #	WELL NAME	SHL FOOTAGE		SHL LAT °	SHL LONG °	PDOP	ELEV (FT.)	1/4/1/4
44	BASHOR PC AA 9-22	2578	FSL	40.50099	-104.43721	1.5	4691	NWSE
45	BASHOR PC AA 9-23	1527	FSL	40.49811	-104.43717	1.4	4691	NWSE
46	BASHOR 9-42	1801	FSL	40.49887	-104.44000	1.7	4689	NWSE
47	BASHOR 9-43	847	FSL	40.49625	-104.43998	1.7	4690	SWSE
48	BASHOR PC AA 9-24	1373	FSL	40.49771	-104.44248	2.1	4687	NESW
49	BASHOR PC AA 9-14	653	FSL	40.49575	-104.44430	1.7	4686	SESW
52	BASHOR STATE AA 16-19	1283	FNL	40.49044	-104.44596	1.8	4683	NENW
53	BASHOR STATE AA 16-3	603	FNL	40.49230	-104.44413	1.8	4681	NENW
54	BASHOR STATE 16-18	1265	FNL	40.49044	-104.44216	1.9	4686	NENW
61	BASHOR STATE AA 16-2	605	FNL	40.49222	-104.43989	1.8	4688	NWNE



DATE: 8/20/2014
PROJECT#: 2013042