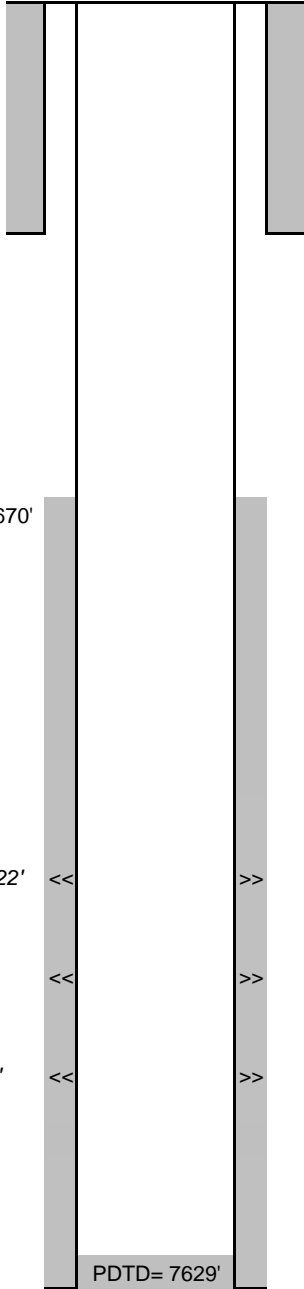


**WELLBORE DIAGRAM**

**Peterson Energy Operating**  
**392 Ventures 12-22D**  
 NESW Sec. 22, T6N-R67W  
 SHL: 1525' FNL, 2309' FWL  
 BHL: 1985' FNL, 664' FWL  
 Weld County, CO  
 05-123-34010

Updated  
 7/15/2014  
 SM

G.L.= 4784  
 K.B.= 4797  
 13



8-5/8" set at 436'  
 Cmt't w/ 268 sx to Surf.

CBL TOC: 1670'

Ran 223 joints of 2 3/8 tubing N-80 4.7# EUE 8rd, 7091'. EOT 7106' KB.  
 on 7-15-14

Niobrara: 7122' <<

>> **NBRR A: 7130'-7136', 6 spf**

NBRR A and B, 6/12/14 Initial frac: 3713.5 bbls, Total Proppant: 249,000 lbs

<<

>> **NBRR B: 7262'-7268', 6 spf**

Codell: 7446' <<

>> **Codell: 7448'-7460', 4 spf**

Initial Frac 3/3/12: 259,560 gal slickwater containing 137,744# 30/50 sand  
 6/12/14: Refrac Codell w/ 2951 bbls, Total Proppant: 233,040 lbs

PDTD= 7629'

Clean to PBTD at 7623' on 7-14-14. 163' below codell.

TD MD= 7660'

4-1/2" 11.6# CSG @ 7640' (7-7/8" O.H.)

TD VD=7375'

Cmt'd w/ 775 sx