

T6N, R67W, 6th P.M.

GREAT WESTERN OIL & GAS COMPANY

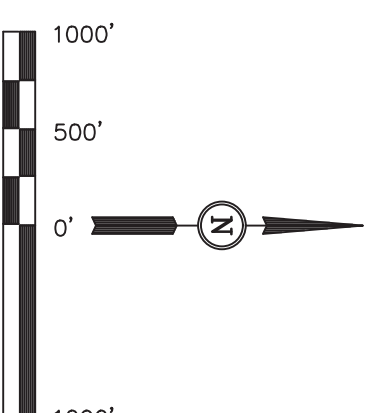
Well location, KODAK SOUTH FD 27-382HN, located as shown in the SE 1/4 SW 1/4 of Section 26, T6N, R67W, 6th P.M., Weld County, Colorado.

BASIS OF ELEVATION

USGS COOPERATIVE BASE NETWORK CONTROL STATION
DESIGNATION 'VERMILYEA'. NGS DATA SHEET LISTS THE
NAVD 88 ELEVATION AS BEING 5026 FEET

BASIS OF BEARINGS

BASIS OF BEARINGS IS A G.P.S. OBSERVATION.



LINE TABLE		
LINE	DIRECTION	LENGTH
L1	S17°30'07"W	657.02'

THIS IS TO CERTIFY THAT THE ABOVE PLAT WAS PREPARED FROM FIELD NOTES OF ACTUAL SURVEYS MADE BY ME OR UNDER MY SUPERVISION AND THAT THE SAME ARE TRUE AND CORRECT TO THE BEST OF MY KNOWLEDGE AND BELIEF.

CERTIFICATE

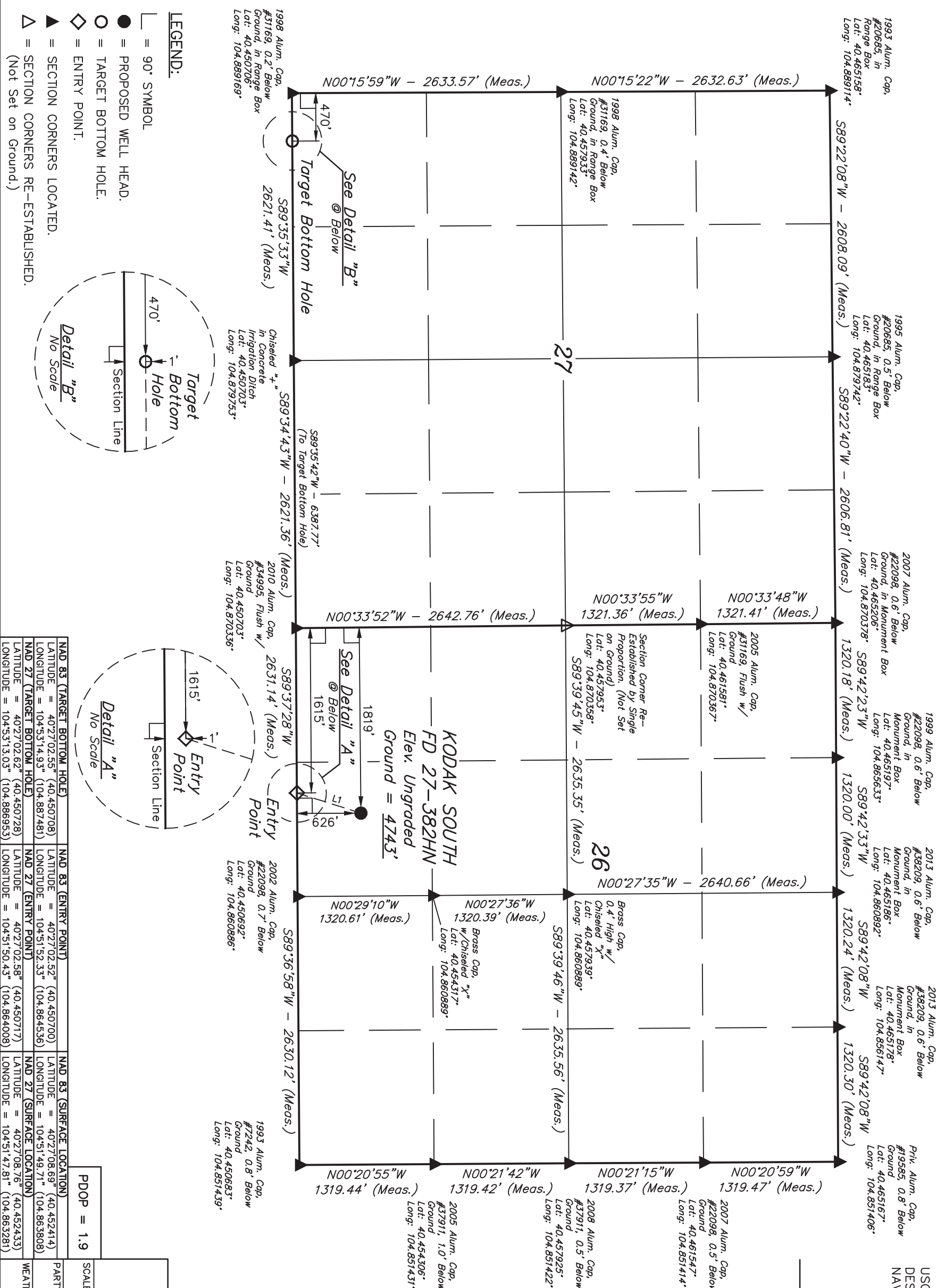
REGISTERED LAND SURVEYOR
REGISTRATION NO. 28285
STATE OF COLORADO

UNTAH ENGINEERING & LAND SURVEYING







85 SOUTH 200 EAST - VERNAL, UTAH 84078

(435) 789-1017

PDOP = 1.9	SCALE	DATE SURVEYED:		DATE DRAWN:
	1" = 1000'	10-18-13		11-02-13
	PARTY	REFERENCES		
	D.N. G.W. J.S.	G.L.O. PLAT		
LOCATION	WEATHER	FILE		
08.69" (40.452414)		GREAT WESTERN OIL & GAS COMPANY		
49.71" (104.863806)				
08.76" (40.452433)	COOL			
47.81" (104.863281)				



LEGEND:

-  = 90° SYMBOL
 = PROPOSED WELL HEAD.
 = TARGET BOTTOM HOLE.
 = ENTRY POINT.
 = SECTION CORNERS LOCATED.
 = SECTION CORNERS RE-ESTABLISHED.
 (Not Set on Ground.)

Target
Bottom
Hole

Section Line

Diagram illustrating a detail view labeled "Detail 'A'" and "No Scale". The view shows a circular feature with a dashed line indicating a section line. A diamond-shaped symbol is labeled "Entry Point". A line with an arrow points to the diamond, and another line with an arrow points to the section line. The text "Section Line" is written below the section line.

NAD 83 (TARGET BOTTOM HOLE)	NAD 83 (ENTRY POINT)	NAD 83 (SURFACE LOCATION)
LATITUDE = 40°27'02.55" (40.450708)	LATITUDE = 40°27'02.52" (40.450700)	LATITUDE = 40°27'08.69" (40.452414)
LONGITUDE = 104°53'14.93" (104.887481)	LONGITUDE = 104°51'52.33" (104.864536)	LONGITUDE = 104°51'49.71" (104.863808)
NAD 27 (TARGET BOTTOM HOLE)	NAD 27 (ENTRY POINT)	NAD 27 (SURFACE LOCATION)
LATITUDE = 40°27'02.62" (40.450728)	LATITUDE = 40°27'02.58" (40.450717)	LATITUDE = 40°27'08.76" (40.452433)
LONGITUDE = 104°53'13.03" (104.886953)	LONGITUDE = 104°51'50.43" (104.864008)	LONGITUDE = 104°51'47.81" (104.863281)