

T6N, R67W, 6th P.M.

GREAT WESTERN OIL & GAS COMPANY

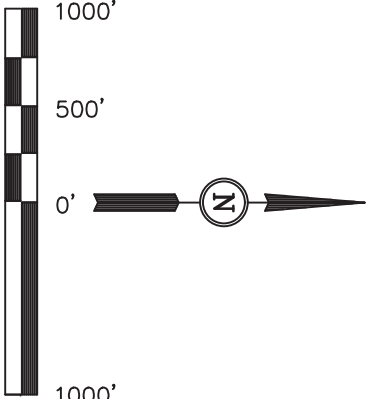
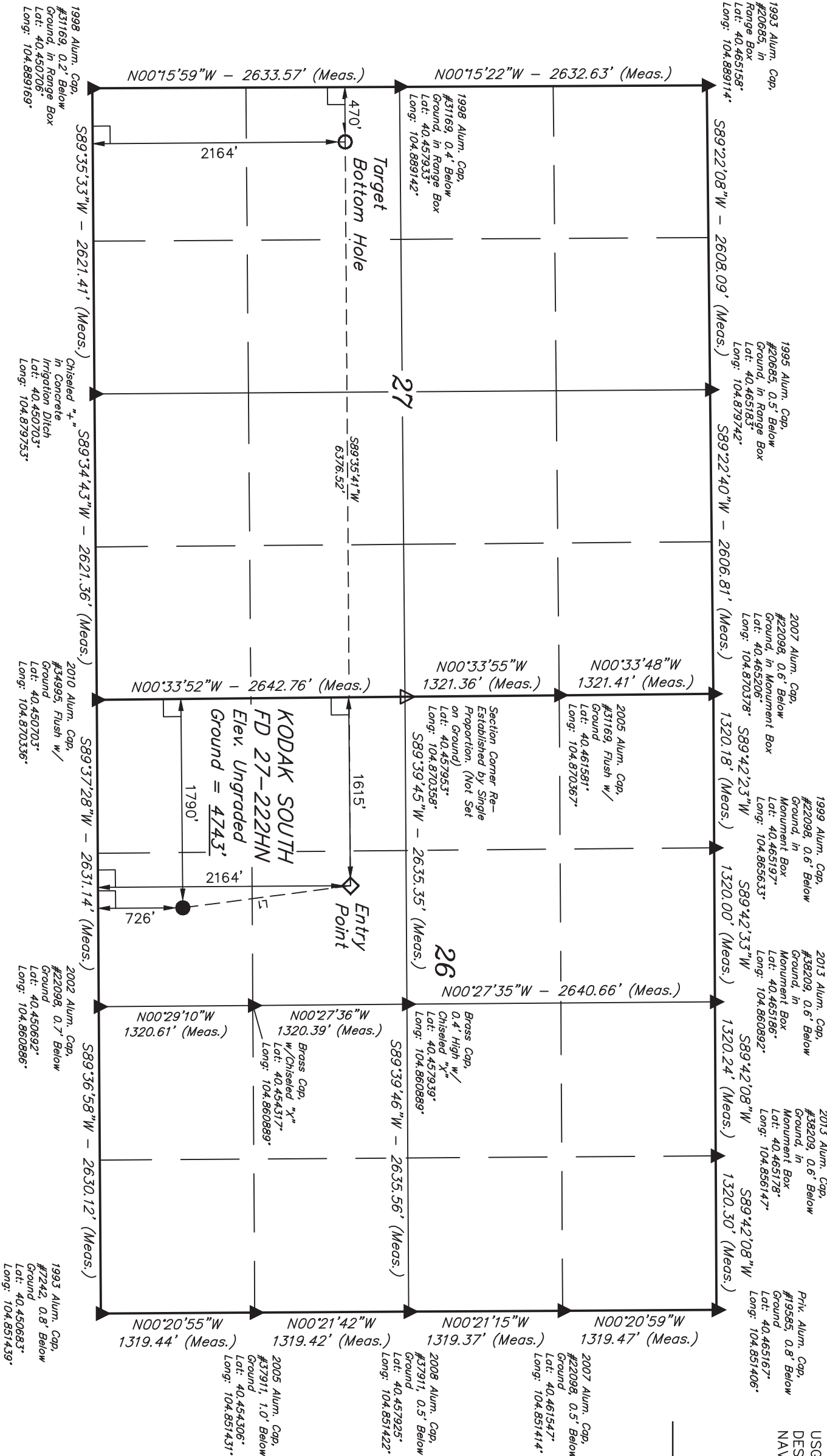
Well location, KODAK SOUTH FD 27-222HN, located as shown in the SE 1/4 SW 1/4 of Section 26, T6N, R67W, 6th P.M., Weld County, Colorado.

BASIS OF ELEVATION

USGS COOPERATIVE BASE NETWORK CONTROL STATION, DESIGNATION "VERMILYEA". NGS DATA SHEET LISTS THE NAVD 88 ELEVATION AS BEING 5026 FEET

BASIS OF BEARINGS

BASIS OF BEARINGS IS A G.P.S. OBSERVATION.



LINE TABLE		
LINE	DIRECTION	LENGTH
L1	N07°29'42\"W	1448.67'

THIS IS TO CERTIFY THAT THE ABOVE PLAT WAS PREPARED FROM FIELD NOTES OF ACTUAL SURVEYS MADE BY ME OR UNDER MY SUPERVISION AND THAT THE SAME ARE TRUE AND CORRECT TO THE BEST OF MY KNOWLEDGE AND BELIEF.



LEGEND:

- └─ = 90° SYMBOL
- = PROPOSED WELL HEAD.
- = TARGET BOTTOM HOLE.
- ◇ = ENTRY POINT.
- ▲ = SECTION CORNERS LOCATED.
- △ = SECTION CORNERS RE-ESTABLISHED. (Not Set on Ground.)

NAD 83 (TARGET BOTTOM HOLE)		NAD 83 (ENTRY POINT)		NAD 83 (SURFACE LOCATION)	
LATITUDE = 40°27'23.92" (40.456644)		LATITUDE = 40°27'23.88" (40.456633)		LATITUDE = 40°27'09.68" (40.452689)	
LONGITUDE = 104°53'14.85" (104.887438)		LONGITUDE = 104°51'52.39" (104.864553)		LONGITUDE = 104°51'50.09" (104.863914)	
NAD 27 (TARGET BOTTOM HOLE)		NAD 27 (ENTRY POINT)		NAD 27 (SURFACE LOCATION)	
LATITUDE = 40°27'23.99" (40.456664)		LATITUDE = 40°27'23.95" (40.456653)		LATITUDE = 40°27'09.75" (40.452708)	
LONGITUDE = 104°53'12.95" (104.886931)		LONGITUDE = 104°51'50.49" (104.864025)		LONGITUDE = 104°51'48.19" (104.863386)	

PDOP = 1.6	
------------	--

UNTAH ENGINEERING & LAND SURVEYING		
85 SOUTH 200 EAST - VERNAL, UTAH 84078		
(435) 789-1017		
SCALE	1" = 1000'	
PARTY	D.N. G.W. J.S.	REFERENCES G.L.O. PLAT
WEATHER	COOL	FILE GREAT WESTERN OIL & GAS COMPANY