

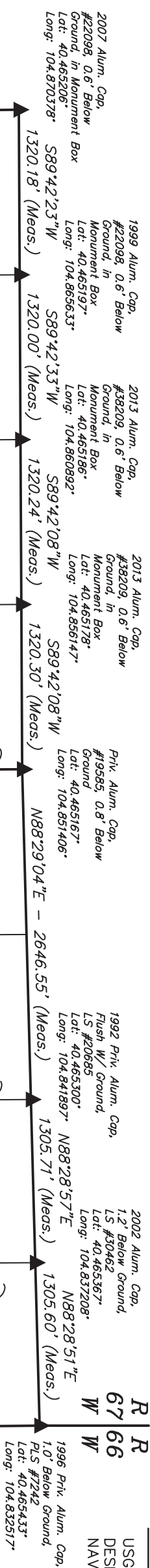
T6N, R67W, 6th P.M.

GREAT WESTERN OIL & GAS COMPANY

Well location, KODAK SOUTH FD 25-282HC, located as shown in the SE 1/4 SW 1/4 of Section 26, T6N, R67W, 6th P.M., Weld County, Colorado.

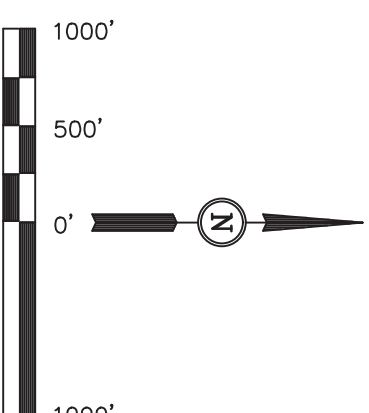
## BASIS OF ELEVATION

USGS COOPERATIVE BASE NETWORK CONTROL STATION  
DESIGNATION 'VERMILYEA'. NGS DATA SHEET LISTS THE  
NAVD 88 ELEVATION AS BEING 5026 FEET



## BASIS OF BEARINGS

BASIS OF BEARINGS IS A G.P.S. OBSERVATION.



LINE TABLE		
LINE	DIRECTION	LENGTH
L1	N07°29'24"E	829.76'

THIS IS TO CERTIFY THAT THE ABOVE PLAY WAS PREPARED FROM FIELD NOTES OF ACTUAL SURVEYS MADE BY ME OR UNDER MY SUPERVISION AND THAT THE SAME ARE TRUE AND CORRECT TO THE BEST OF MY KNOWLEDGE AND BELIEF.

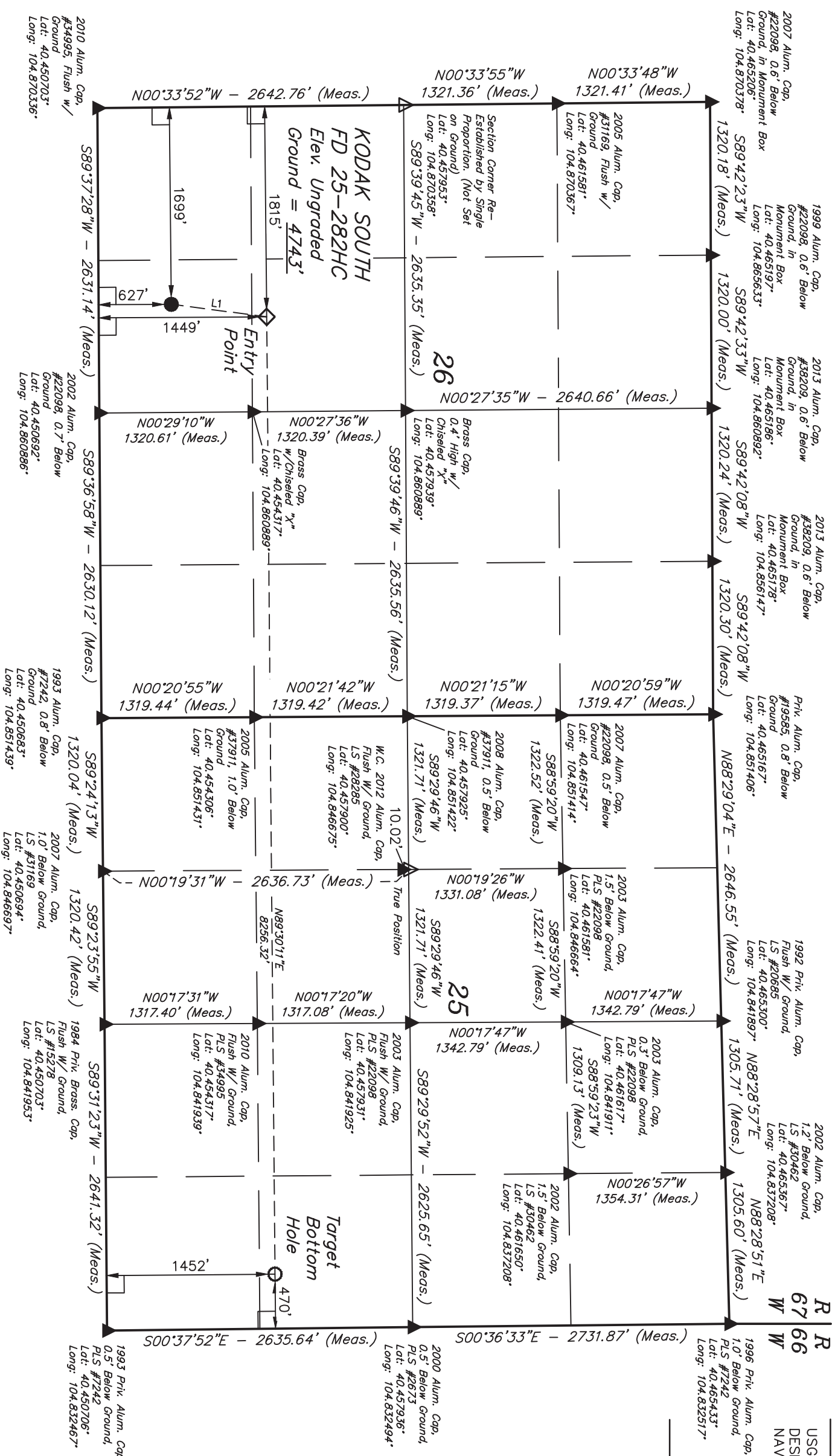


# UNTAH ENGINEERING & LAND SURVEYING







85 SOUTH 200 EAST - VERNAL, UTAH 84078

(435) 789-1017

PDOP = 2.0	SCALE		DATE SURVEYED:		DATE DRAWN:	
	1" = 1000'		10-18-13		11-02-13	
PCN 08.70" (40.452417)	PARTY	D.N. G.W. J.S.		REFERENCES		
51.26" (104.864239)				G.L.O. PLAT		
PCN 08.77" (40.452436)	WEATHER	COOL		FILE		
49.36" (104.863711)				GREAT WESTERN OIL & GAS COMPANY		



LEGEND:

-  = 90° SYMBOL  
 = PROPOSED WELL HEAD.  
 = TARGET BOTTOM HOLE.  
 = ENTRY POINT.  
 = SECTION CORNERS LOCATED.  
 = SECTION CORNERS RE-ESTABLISHED.  
 (Not Set on Ground.)