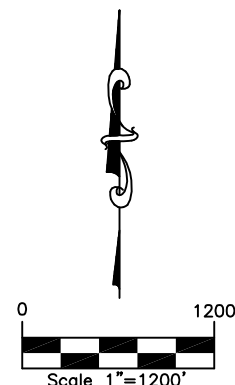
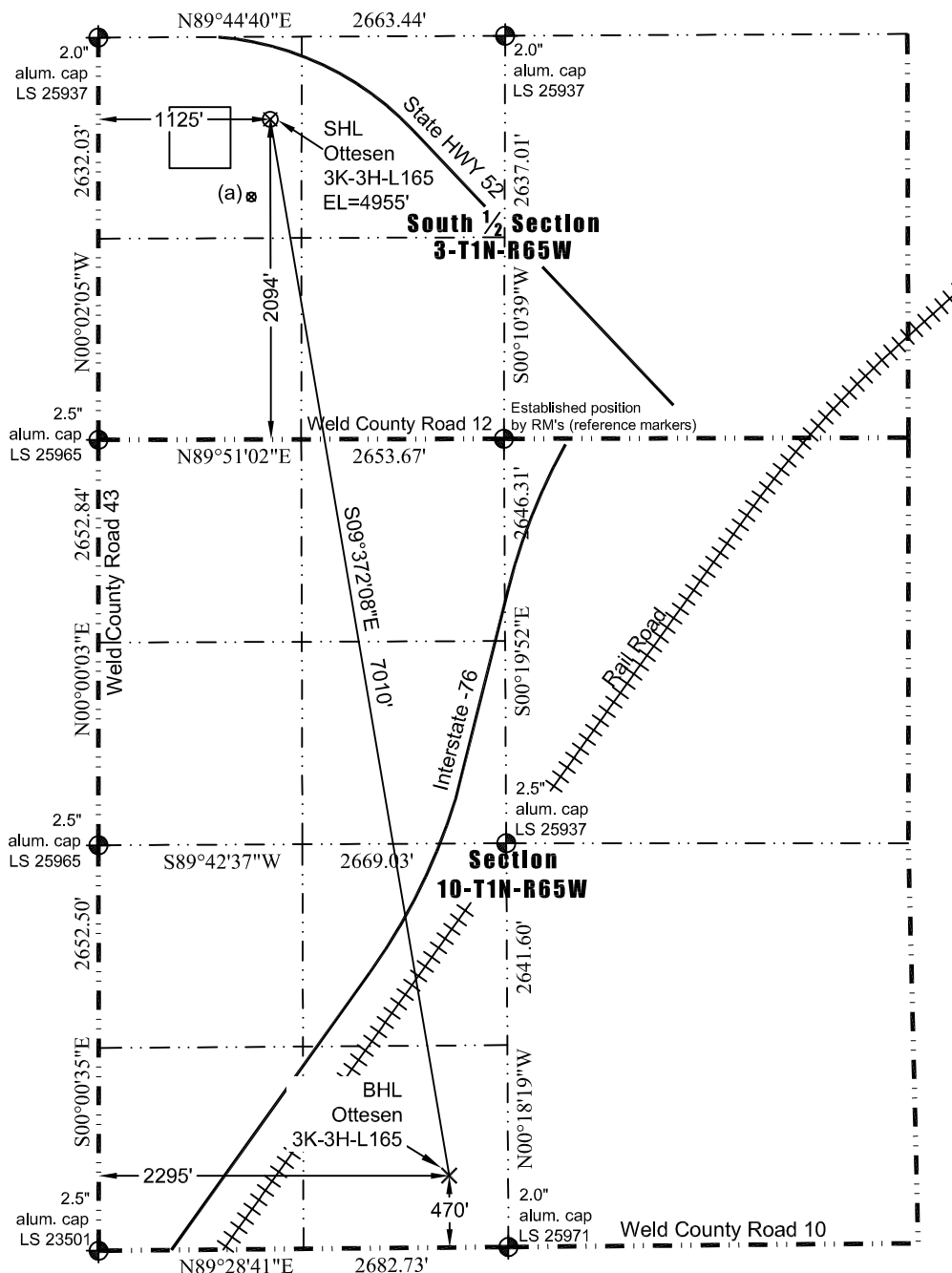




# WELL LOCATION CERTIFICATE

THIS MAP DOES NOT REPRESENT A BOUNDARY SURVEY

Washburn Land Surveying  
www.WashburnSurveying.com  
970-232-9645



**LEGEND**  
 ◆ - found survey monument  
 (C) - calculated dimension

(a) Existing Well Data:  
 Ottesen #1  
 Latitude: N 40.077638°  
 Longitude: W 104.655806°  
 FSL: 1,586'  
 FWL: 1,001'  
 ELEV: 4,964'  
 PDOP: 1.0

Proposed Surface Hole Data:  
 Latitude: N 40.079030° (BHL: 40.060027°)  
 Longitude: W 104.655346° (BHL: 104.651397°)  
 PDOP: 1.3

Nearest:  
 Building: 1,397' southeast  
 Building Unit: 1,476' southeast  
 Above Ground Utility: 551' northwest  
 Public Road: 440' northeast  
 Railroad: 4,048' southeast  
 Property Line: 388' northeast  
 Well Window: SHL is 260' outside  
 Existing Well: Ottesen #1; 523' southwest  
 High Occupancy Building Unit: 1,840' southeast

In accordance with a request from Jay Knutson of EnCana Oil & Gas (USA) Inc., Washburn Land Surveying, LLC has determined the location of the **Ottesen 3K-3H-L165** well site to be SHL: 2094' FSL and 1125' FWL, (BHL: 470' FSL and 2295' FWL), as measured at ninety (90) degrees from the section lines of Section 3 and Section 10, Township 1 North, Range 65 West of the 6th Principal Meridian, Weld County Colorado.

## Notes:

- 1) Bearings and distances based on NAD 83 Colorado North State Plane Coordinate, using RTK GPS observations taken 7/10/14 by operator Chris Bettencourt.
- 2) Conversion factor to ground (1.0002730063).
- 3) Elevations based on NAVD 88 GPS heights and Geoid 2009 corrections.
- 4) See Location Drawing for visible improvements within 500 feet of Pad Site.
- 5) The surface use is a uncultivated field.

**NOTICE:** According to Colorado law you must commence any legal action based upon any defect in this W.L.C. within three years after you first discover such defect. In no event may any action based upon any defect in this W.L.C. be commenced more than ten years from this said date of the certification shown hereon.

I hereby certify that this Well Location Certificate was prepared by me or under my direct supervision on 7/11/2014 for and on behalf of EnCana Oil & Gas (USA) Inc. That it is not a Land Survey Plat or an Improvement Survey Plat and that it is not to be relied upon for establishment of fences, buildings, or other future improvement lines.

John Robert McGeehee LS#38219  
 Well: Ottesen 3K-3H-L165 WLC