

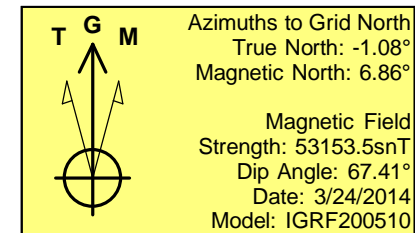
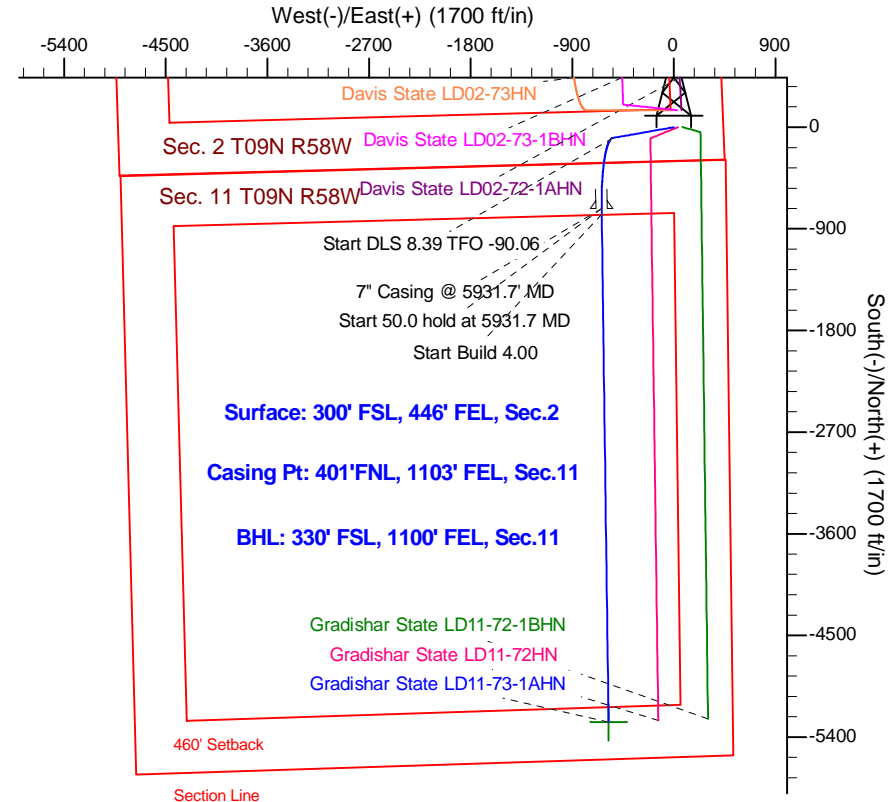
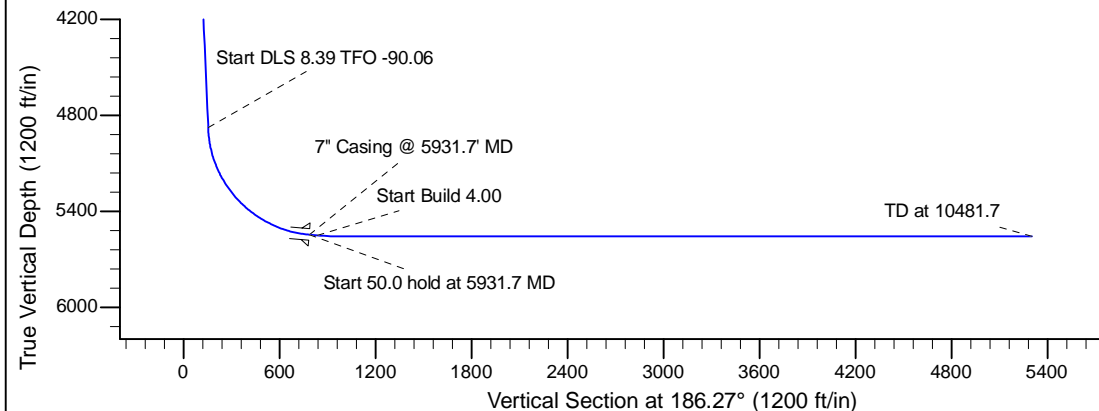
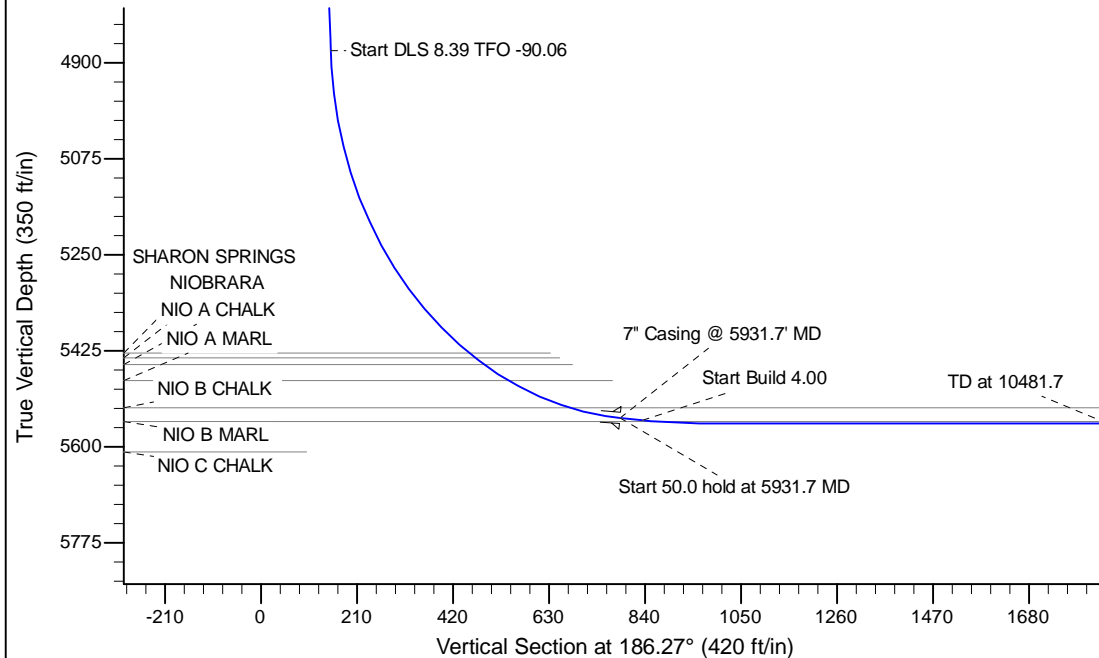
Project: Wattenberg Field  
 Site: LD (Sec.2-T09N-R58W) Weld County, CO  
 Well: Gradishar State LD11-73-1AHN  
 Wellbore: Original Drilling  
 Design: APD - Rev 1

# Northern Region Drilling - Working

Geodetic System: US State Plane 1983  
 Datum: North American Datum 1983  
 Ellipsoid: GRS 1980  
 Zone: Colorado Northern Zone  
 System Datum: Mean Sea Level

## SECTION DETAILS

Sec	MD	Inc	Azi	TVD	+N/-S	+E/-W	Dleg	TFace	VSec	Target
1	0.0	0.00	0.00	0.0	0.0	0.0	0.00	0.00	0.0	
2	1200.0	0.00	0.00	1200.0	0.0	0.0	0.00	0.00	0.0	
3	1650.0	9.00	260.00	1648.2	-6.1	-34.7	2.00	260.00	9.9	
4	4898.8	9.00	260.00	4857.0	-94.4	-535.2	0.00	0.00	152.3	
5	4920.0	10.10	268.41	4877.9	-94.7	-538.7	8.39	55.90	153.0	
6	5931.7	85.00	179.24	5547.3	-720.0	-640.0	8.39	-90.06	785.6	
7	5981.7	85.00	179.24	5551.7	-769.8	-639.3	0.00	0.00	835.1	
8	6106.7	90.00	179.24	5557.1	-894.6	-637.7	4.00	0.00	959.0	
9	10481.7	90.00	179.23	5557.0	-5269.2	-579.2	0.00	-76.38	5301.0	Gradishar State LD11-73-1AHN BHL 330'FSL, 1100'FEL



WELL DETAILS: Gradishar State LD11-73-1AHN					
Ground Level:4661.0					
0.0	0.0	1529270.22	3464386.91	40.774180	-103.823250
Plan: APD - Rev 1 (Gradishar State LD11-73-1AHN/Original Drilling)					
Created By: Shailey Jewell			Date: 8:13, August 21 2014		
OK to submit with 2A as per Noble Drilling 8/21/2014 9:24					