

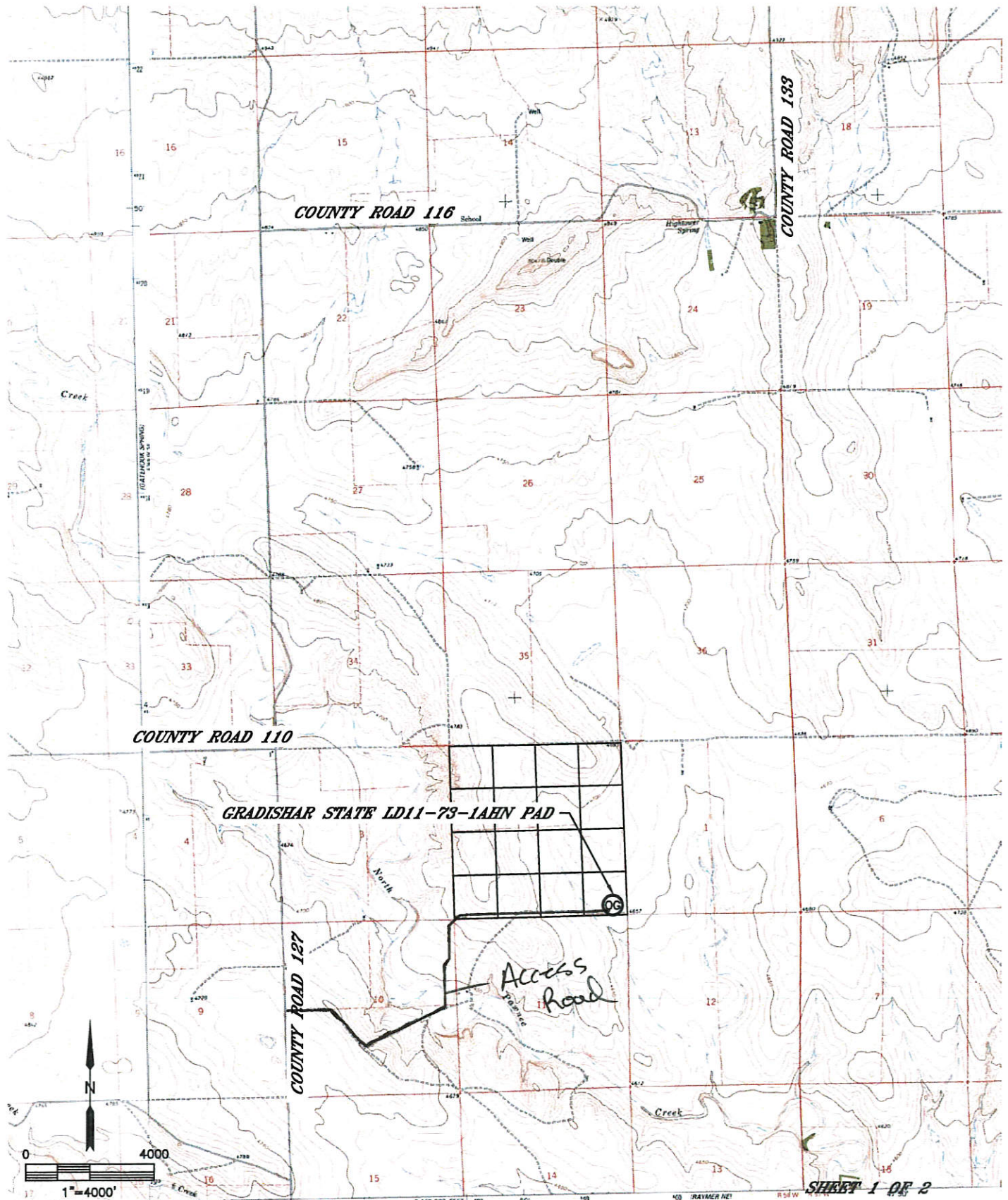


Lat40°, Inc. 1635 Foxtrail Drive, Suite 325 Loveland, CO 970-776-3321

ACCESS ROAD MAP

GRADISHAR STATE LD11-73-1AHN PAD

SECTION: 2
TOWNSHIP: 9N
RANGE: 58W



DATE: 7/13/2014
PROJECT#: 2013115

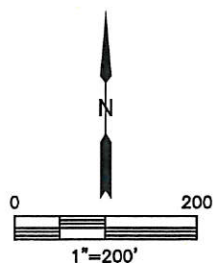
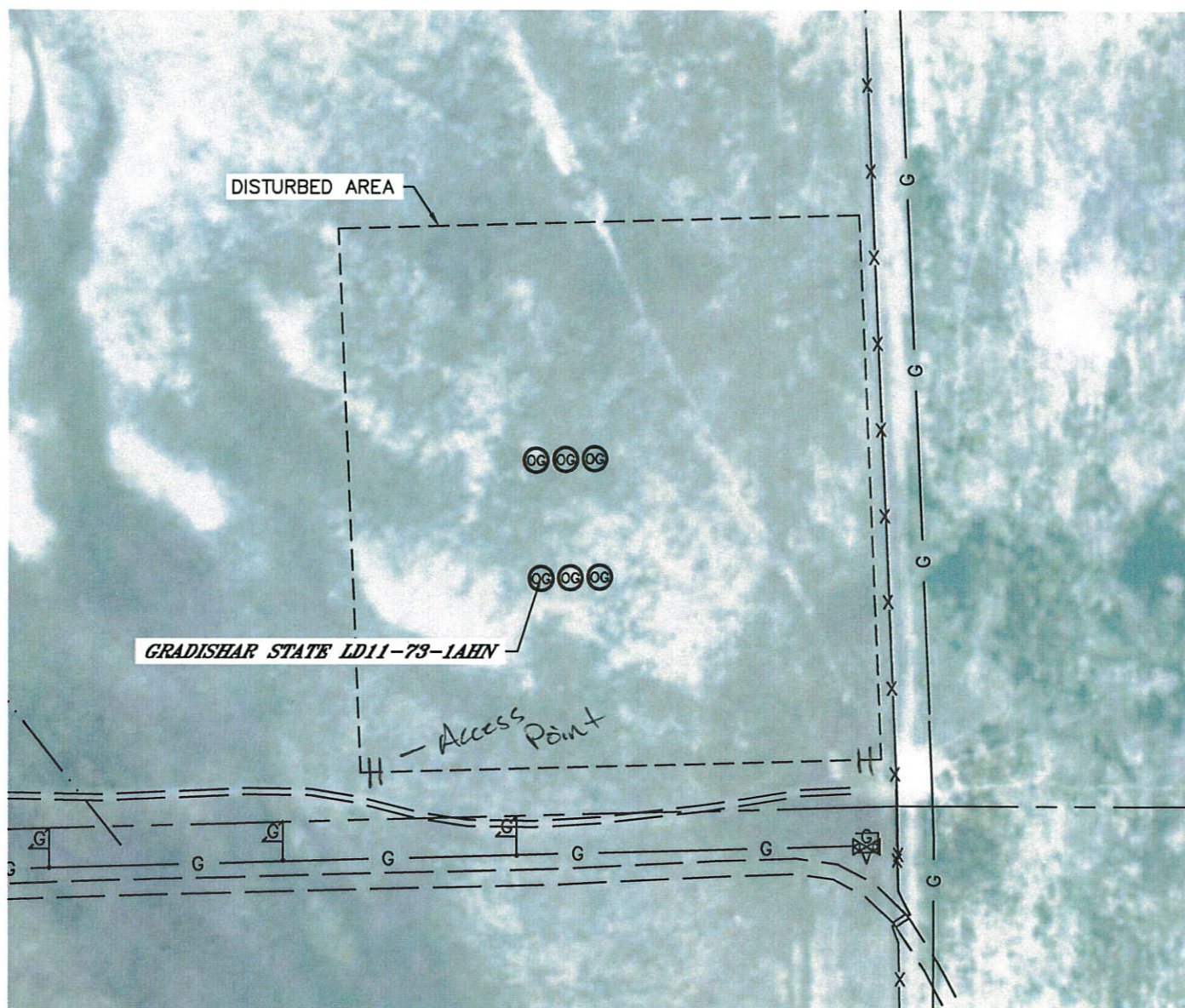


Lat40°, Inc. 1635 Foxtrail Drive, Suite 325 Loveland, CO 970-776-3321

ACCESS ROAD MAP

GRADISHAR STATE LD11-73-1AHN PAD

SECTION: 2
TOWNSHIP: 9N
RANGE: 58W



SHEET 2 OF 2

DATE: 7/13/2014
PROJECT#: 2013115