



GAMMA RAY

5" = 100' FEET TWD

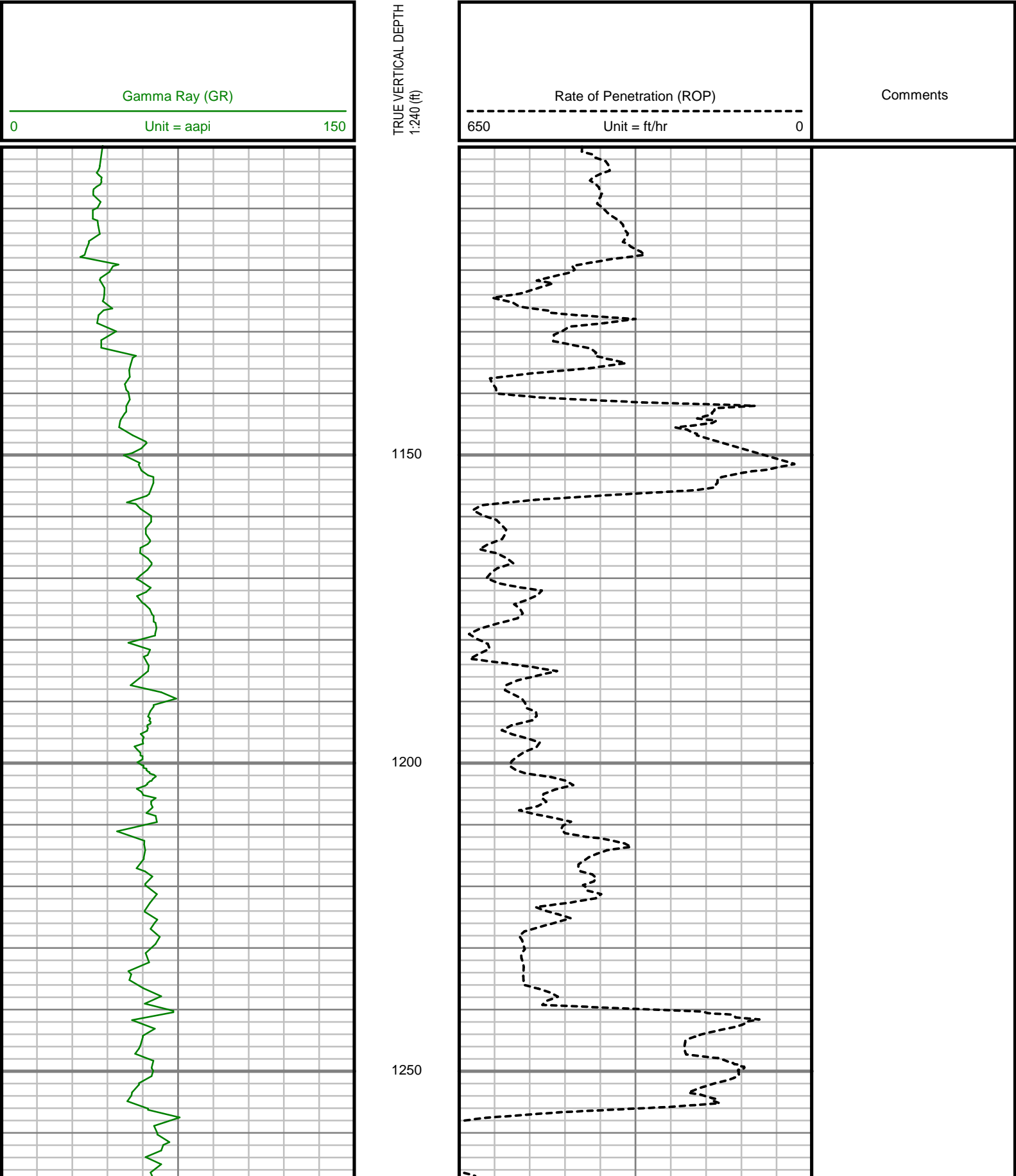
COMPANY : ENCANA OIL & GAS (U.S.A.) INC WELL : MCCONAHAY 1C-34H-H266 FIELD : WATTENBERG COUNTY : U.S.A. STATE : COLORADO COUNTRY : WELD UWI : 05-123-38059				COMPANY : ENCANA OIL & GAS (U.S.A.) INC WELL : MCCONAHAY 1C-34H-H266 FIELD : WATTENBERG COUNTY : U.S.A. STATE : COLORADO COUNTRY : WELD UWI : 05-123-38059			
DEPTH REF. : R.K.B. REF. HEIGHT : 13.000 ft GROUND LEVEL : 5060.000 ft		R.K.B. to Ground Level G.L. to MEAN SEA LEVEL		WELL LOCATION LAT:40°5'52.764"N LONG:104°45'27.828"W N:1279411.28 ft E:3207648.39 ft SEC:34 TWP:2N RANGE:66W		OTHER SERVICES DIRECTIONAL ROP	
BOREHOLE RECORD				DEVIATION RECORD			
HOLE SIZE in	FROM ft	TO ft	INCLINATION deg	FROM ft	TO ft		
12.25	96	1150	0 - 13	96	1150		
8.75	1150	8087	13 - 79	1150	8087		
6.125	8087	11694	79 - 91	8087	11694		
CASING RECORD							
CASING SIZE in	FROM ft	TO ft					
9.625	0	1142					
7	0	8077					
			DRILLING CO. : ENSIGN RTG: 124				
			LMD UNIT NO. : C70-EM4#83DISTRICT: CASPER SPUD DATE: 04/02/2014				
			LMD START DATE: 04/04/2014				DEPTH: 5000 ft
			LMD END DATE: 04/12/2014				DEPTH: 11694 ft
			TOTAL DEPTH: 11694 ft				

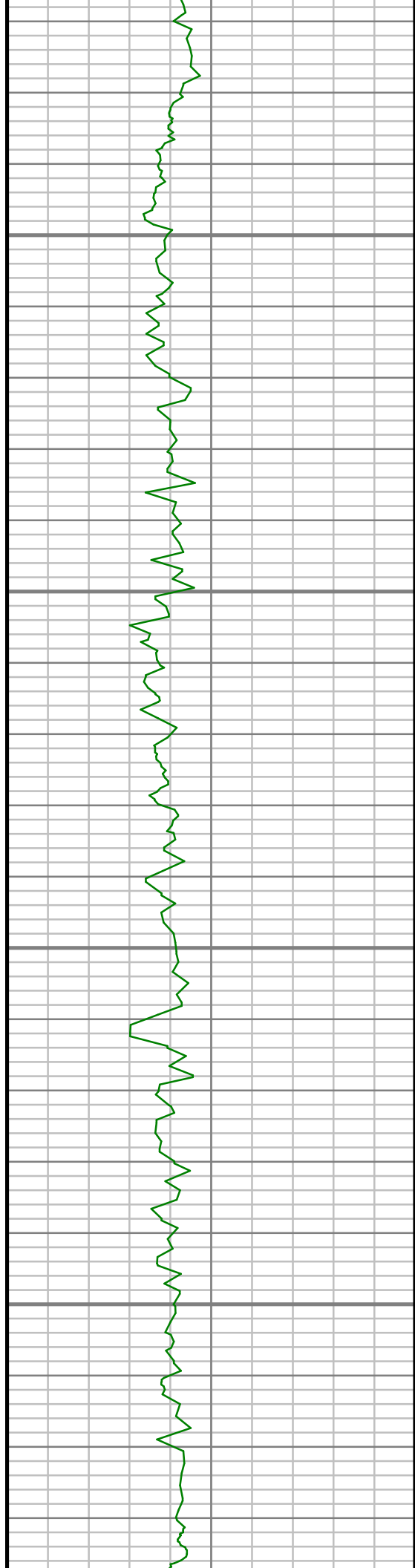
Remarks
ENCANA OIL & GAS (U.S.A.) INC PRODUCTION AFE# 13178241
SCIENTIFIC DRILLING INTERNATIONAL JOB# 133900
ALL REFERENCES IN THE DEPTH TRACK ARE AT BIT DEPTH.
ALL DATA IS MEMORY DATA UNLESS STATED OTHERWISE.
FLAT AVERAGE FILTER OF 1.00 FT APPLIED TO GAMMA RAY CURVE
FLAT AVERAGE FILTER OF 1.00 FT APPLIED TO RATE OF PENETRATION CURVE
RUN #1: MWD / DIRECTIONAL RUN
SENSORS S/N: CONT = 814 / MWD EYE = 0429
BIT TO SENSOR OFFSET: SURVEY = 59.07 FT.
RUN #2: MWD / GAMMA RAY LOGGING RUN
SENSORS S/N: PULSER = 128-183 / CONT = 114/ MWD EYE = 0862/ GAMMA RAY = 1050
BIT TO SENSOR OFFSETS: SURVEY = 62.04 FT. / GAMMA RAY = 48.79 FT.
RUN #3: MWD / GAMMA RAY LOGGING RUN
SENSORS S/N: PULSER = 128-375 / CONT = 831 / MWD EYE = 0429 / GAMMA RAY = 1074
BIT TO SENSOR OFFSETS: SURVEY = 66.26 FT. / GAMMA RAY = 53.01 FT.
RUN #4: MWD / GAMMA RAY LOGGING RUN
SENSORS S/N: PULSER = 78-197 / CONT = 114 / MWD EYE = 0862 / GAMMA RAY = 1050
BIT TO SENSOR OFFSETS: SURVEY = 65.00 FT. / GAMMA RAY = 51.75 FT.

[illegible]

All interpretations are opinions based on inferences from electrical or other measurements and we cannot, and do not guarantee the accuracy or correctness of any interpretations, and we shall not, except in the case of gross or willful negligence on our part, be liable or responsible for any loss, costs, damages or expenses incurred or sustained by anyone resulting from any interpretation made by any of our officers, agents or employees. These interpretations are also subject to our general terms and conditions as set out in our current price schedule.

ENCANA OIL AND GAS (U.S.A.) INC
MCCONAHAY 1C-34H-H266
WATTENBERG FIELD
WELD COUNTY,COLORADO
05-123-38059



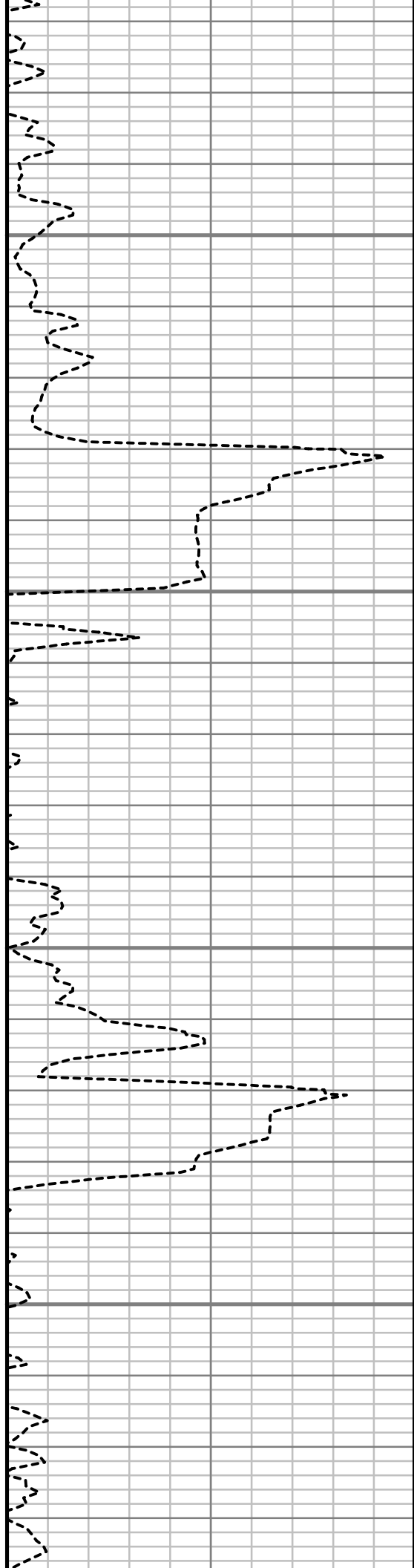


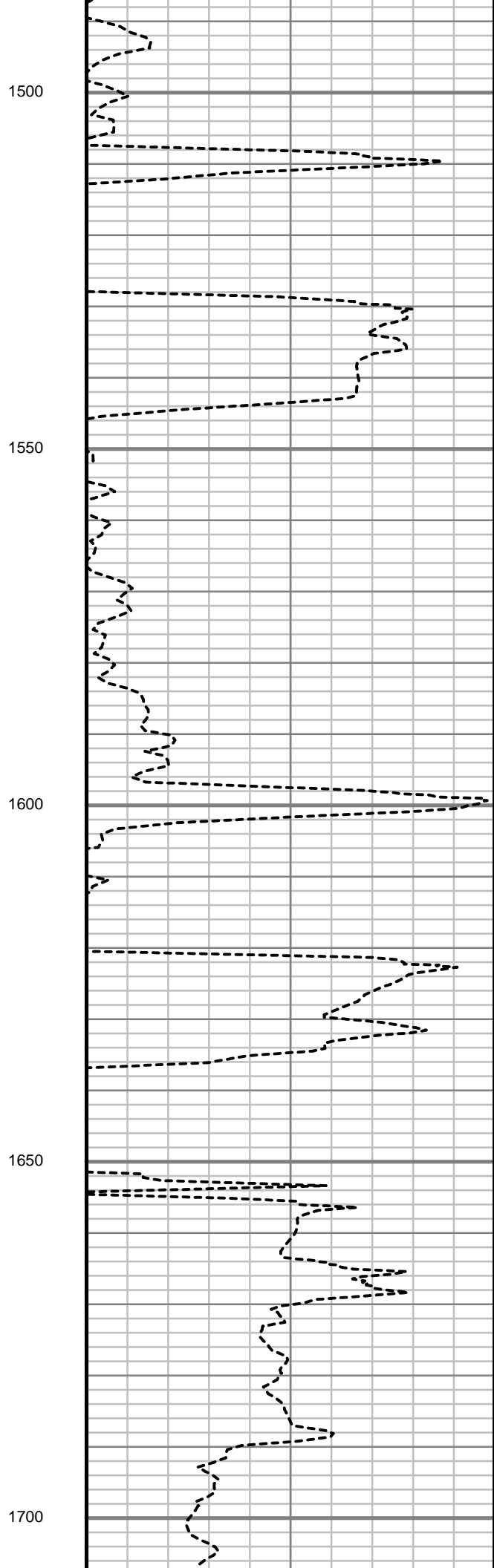
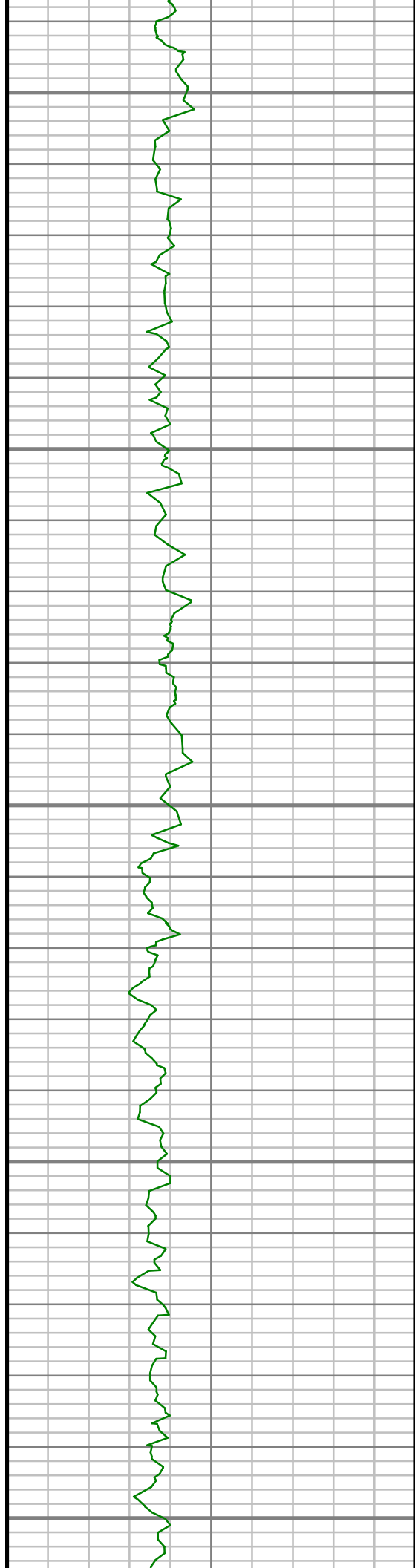
1300

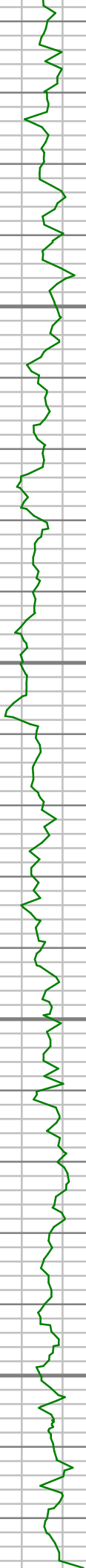
1350

1400

1450





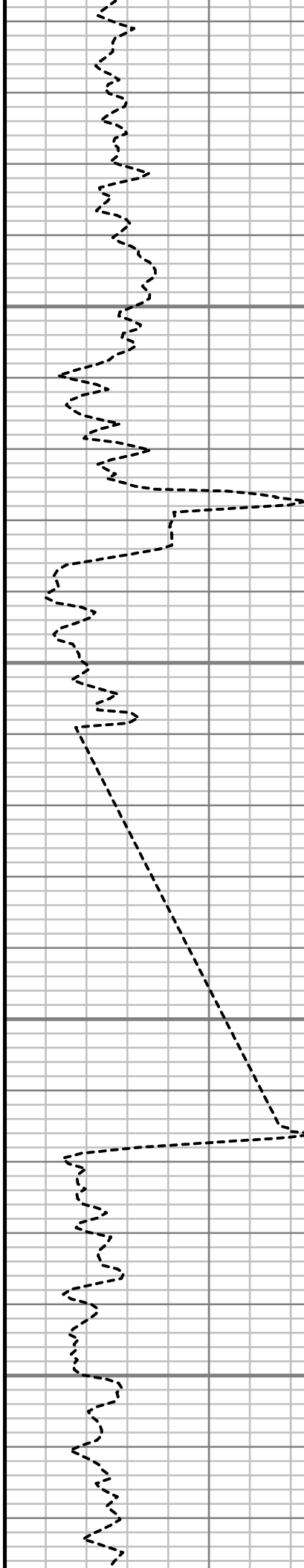


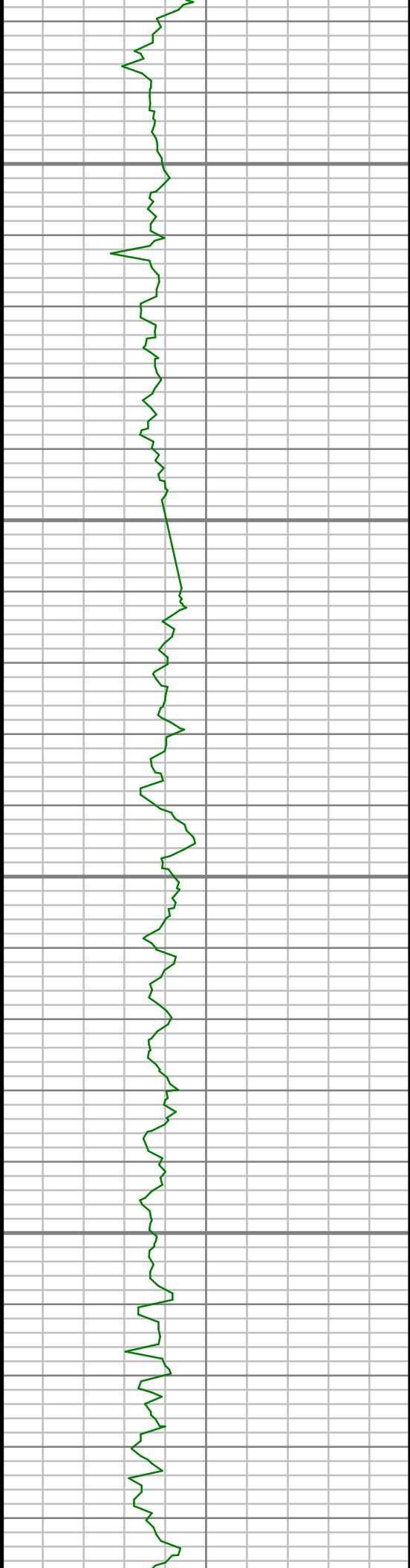
1750

1800

1850

1900



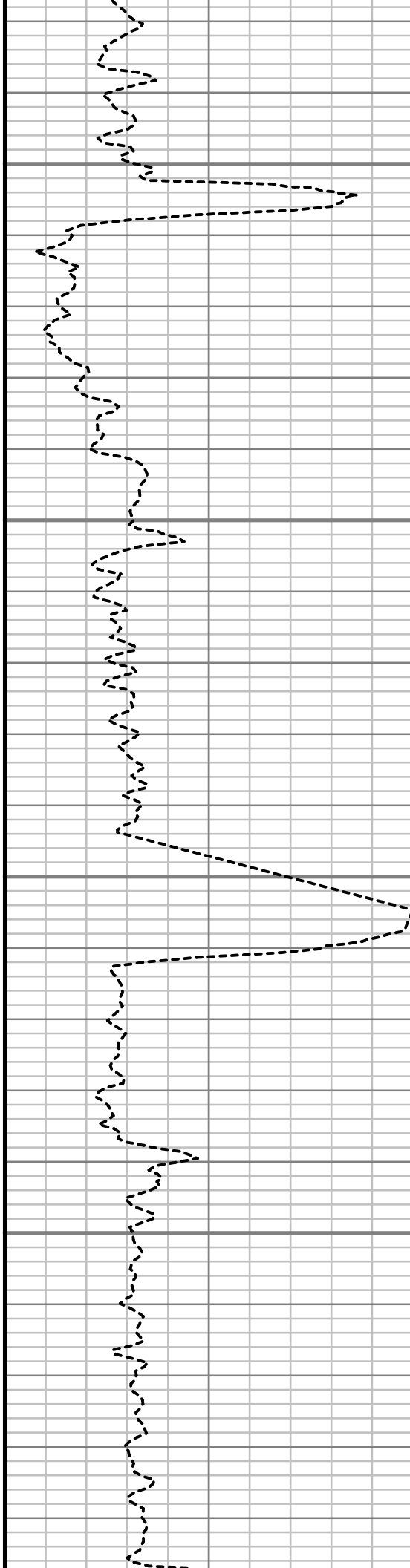


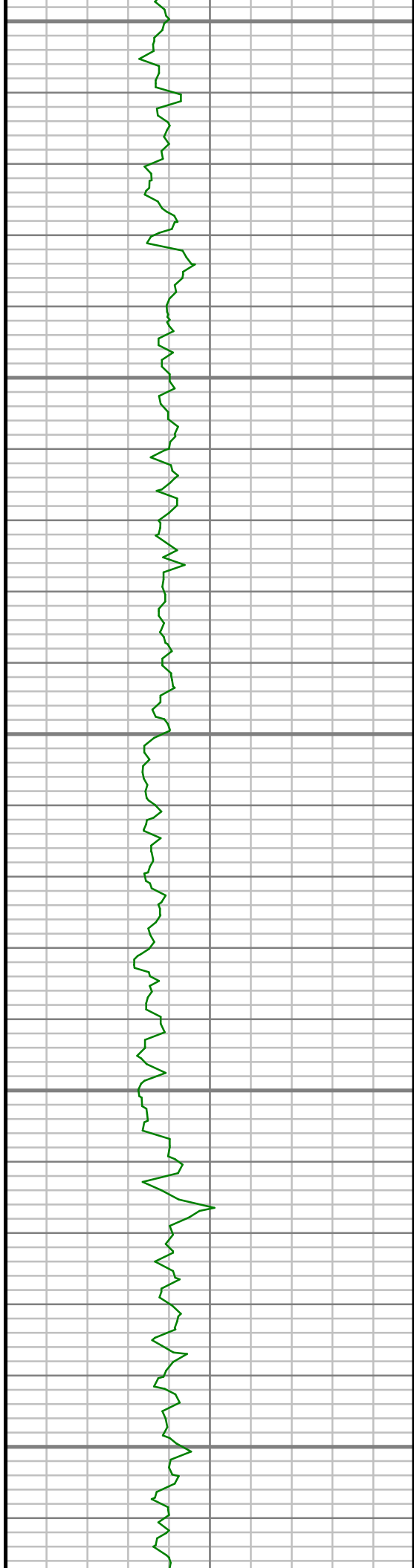
1950

2000

2050

2100





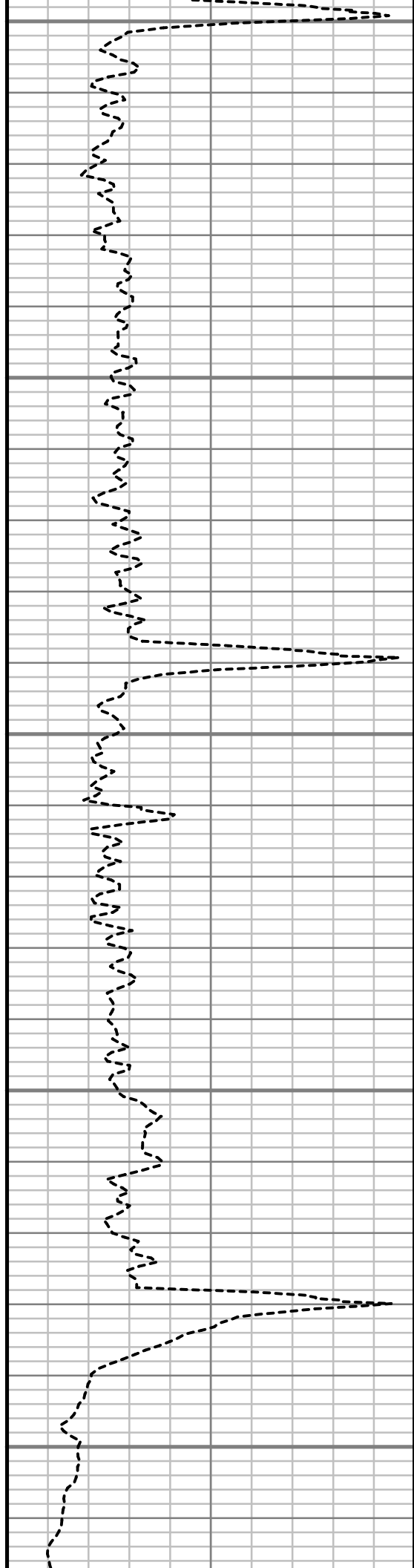
2150

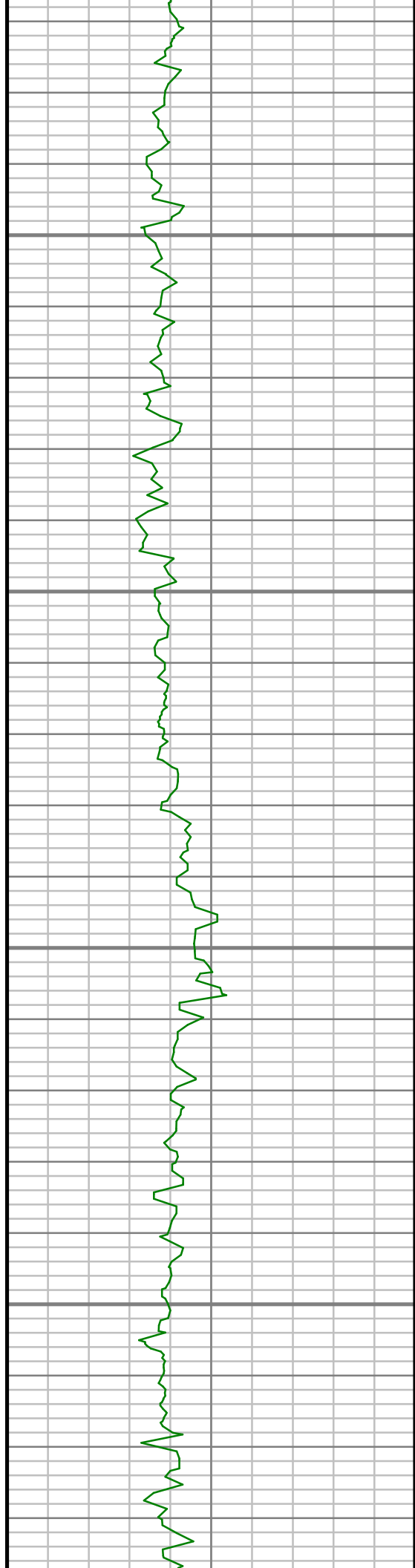
2200

2250

2300

2350



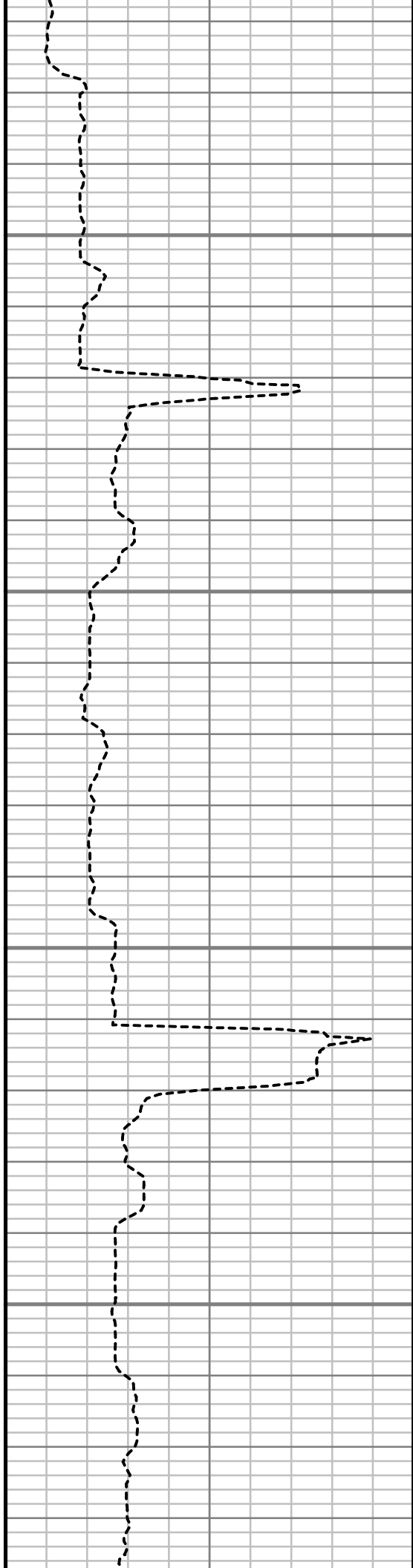


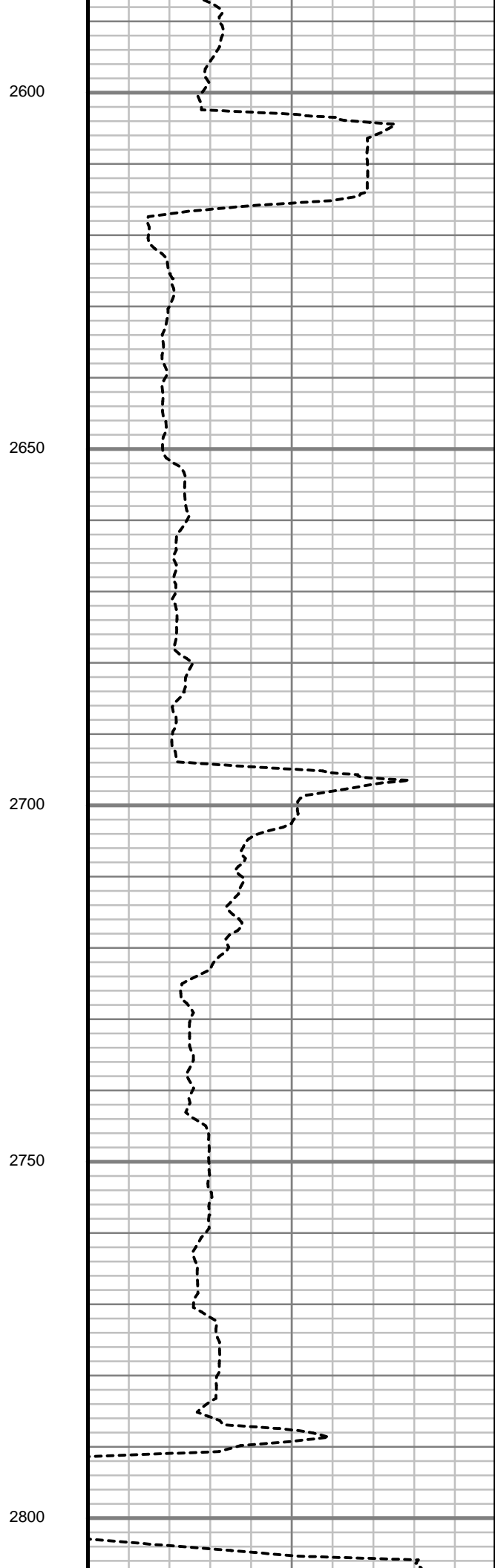
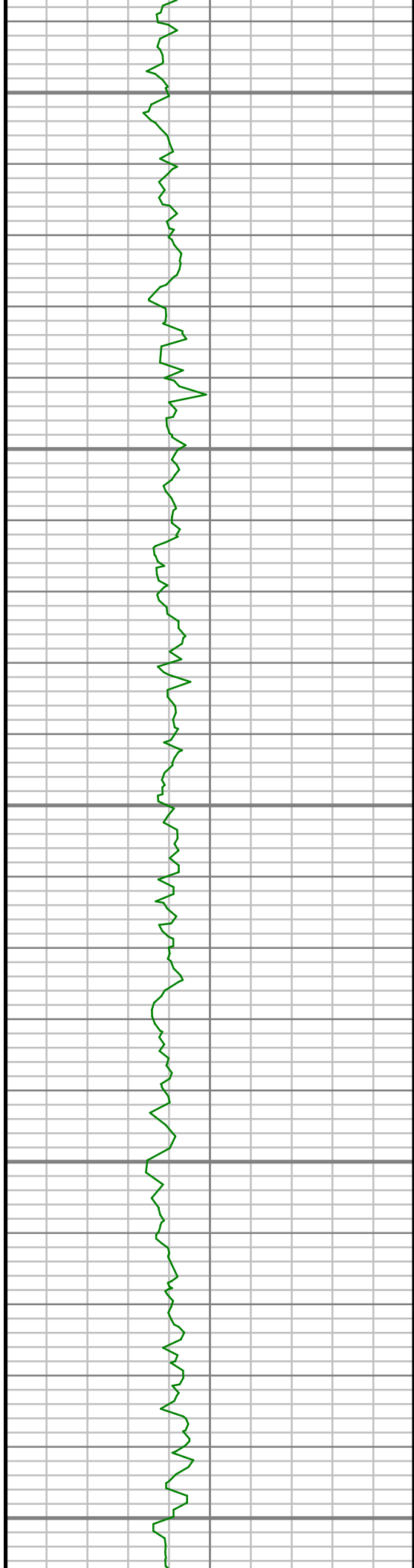
2400

2450

2500

2550





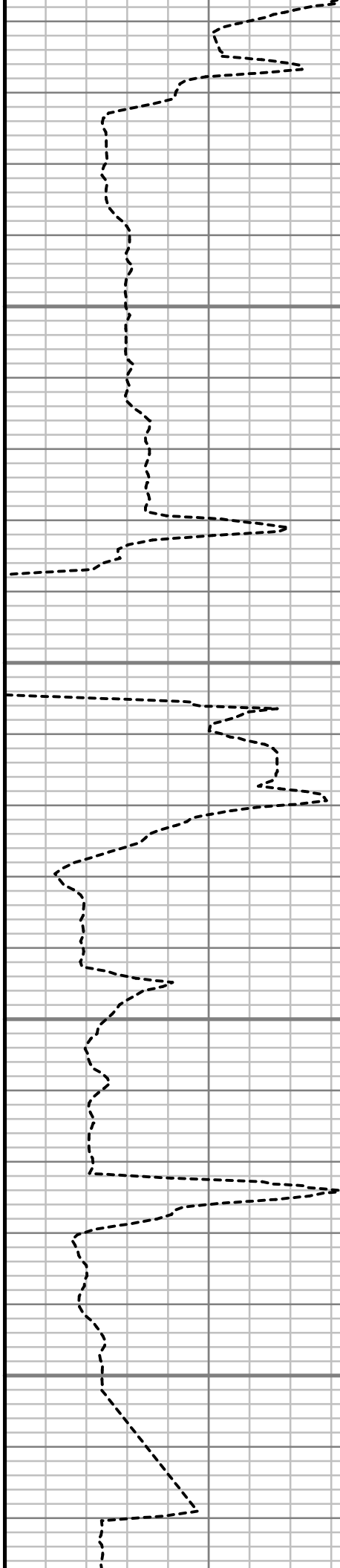


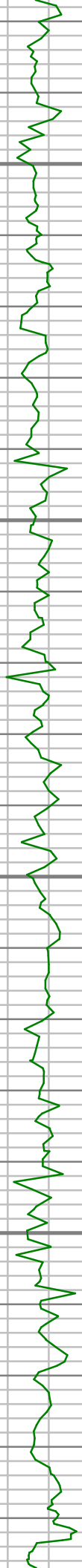
2850

2900

2950

3000



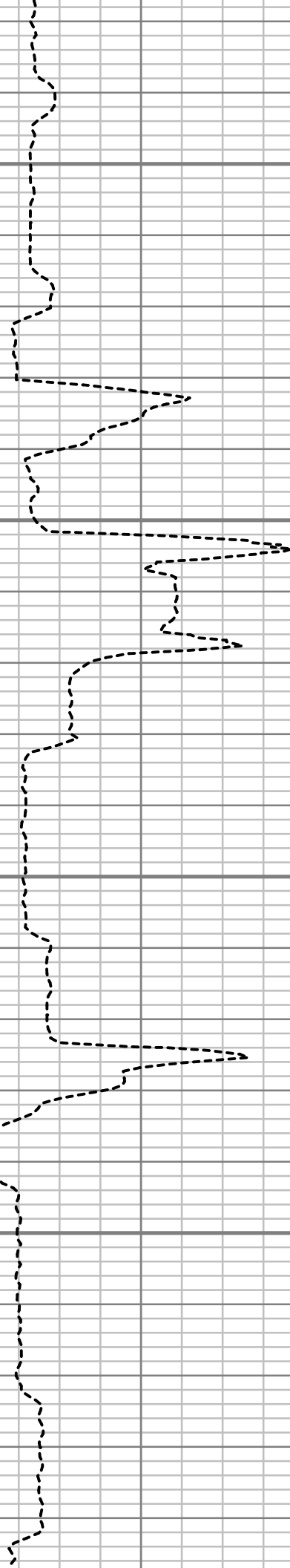


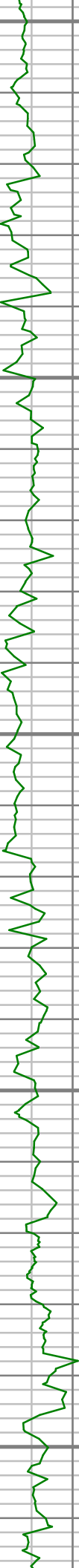
3050

3100

3150

3200





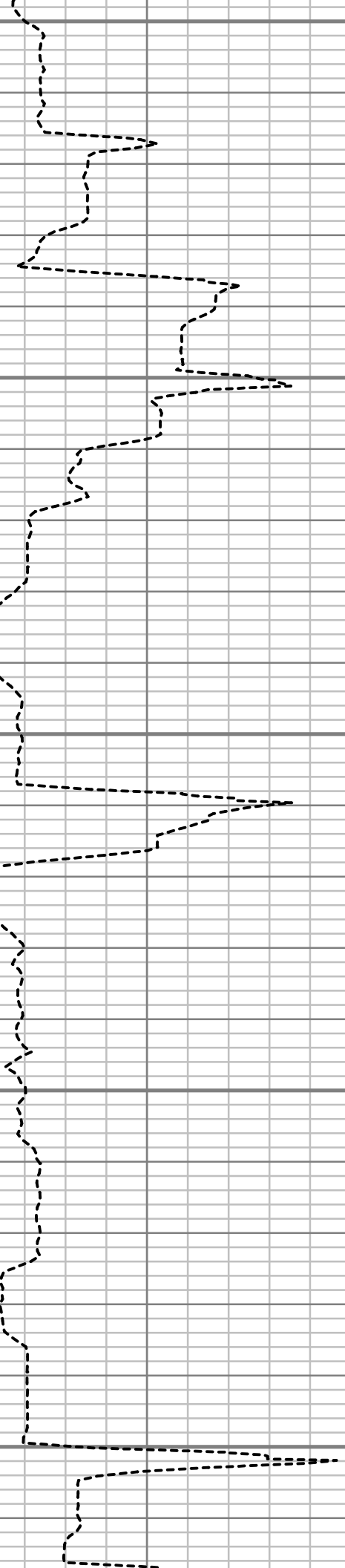
3250

3300

3350

3400

3450



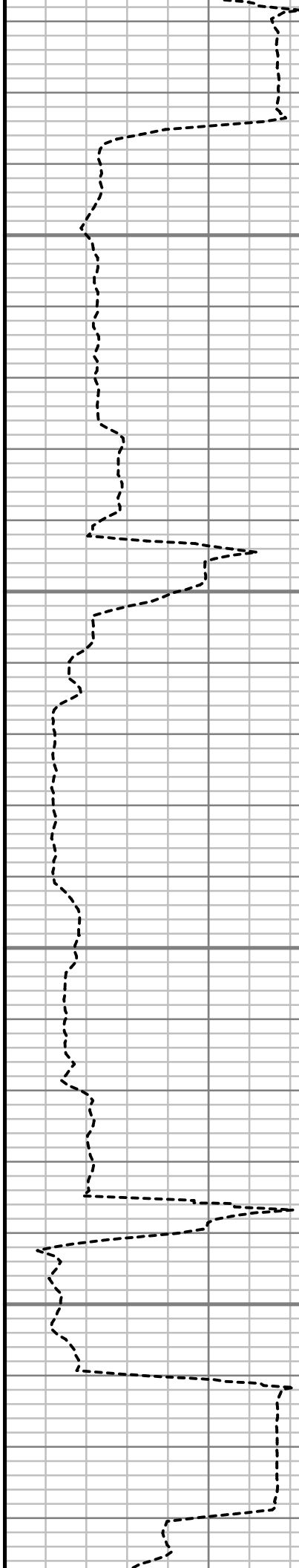


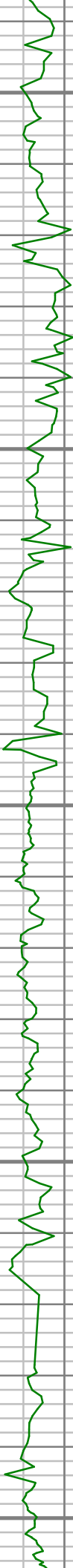
3500

3550

3600

3650





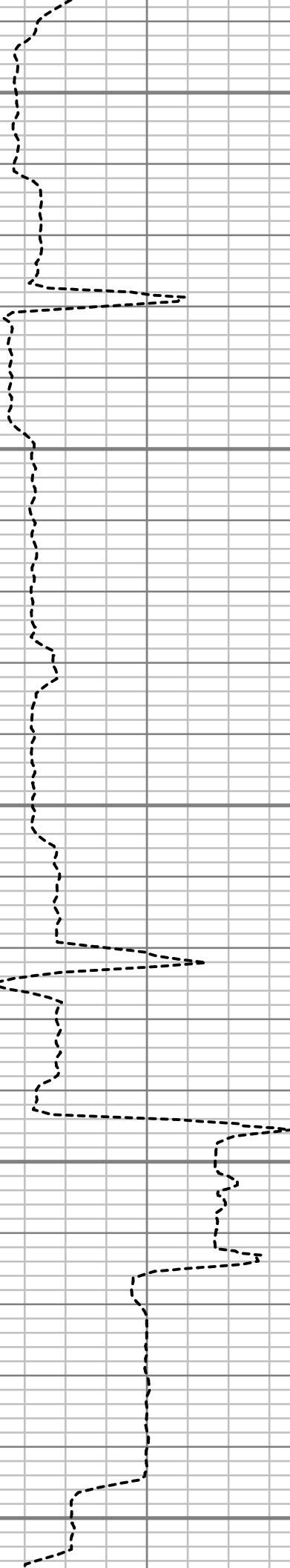
3700

3750

3800

3850

3900



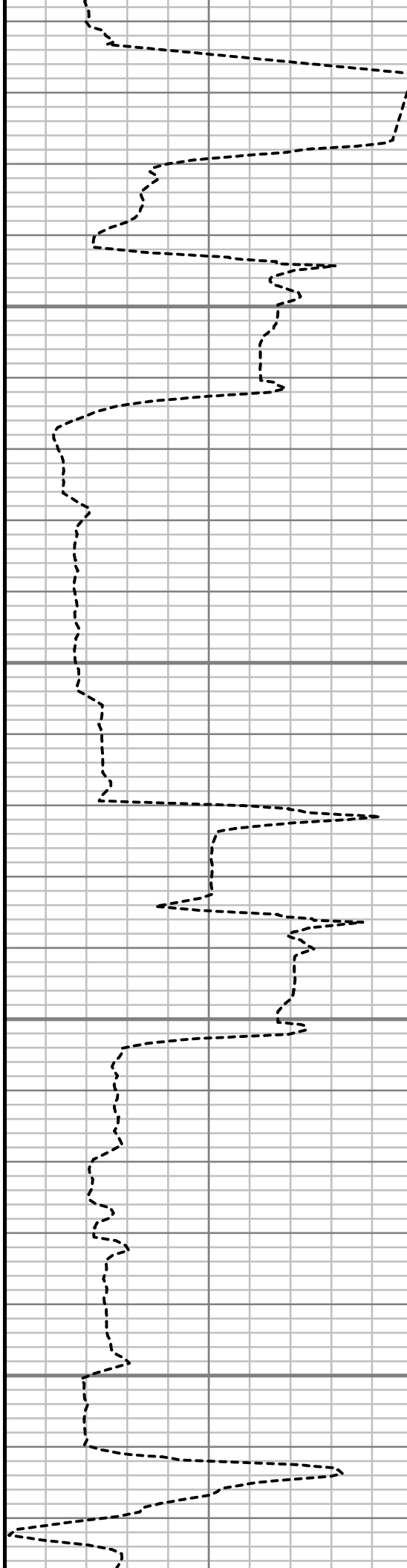


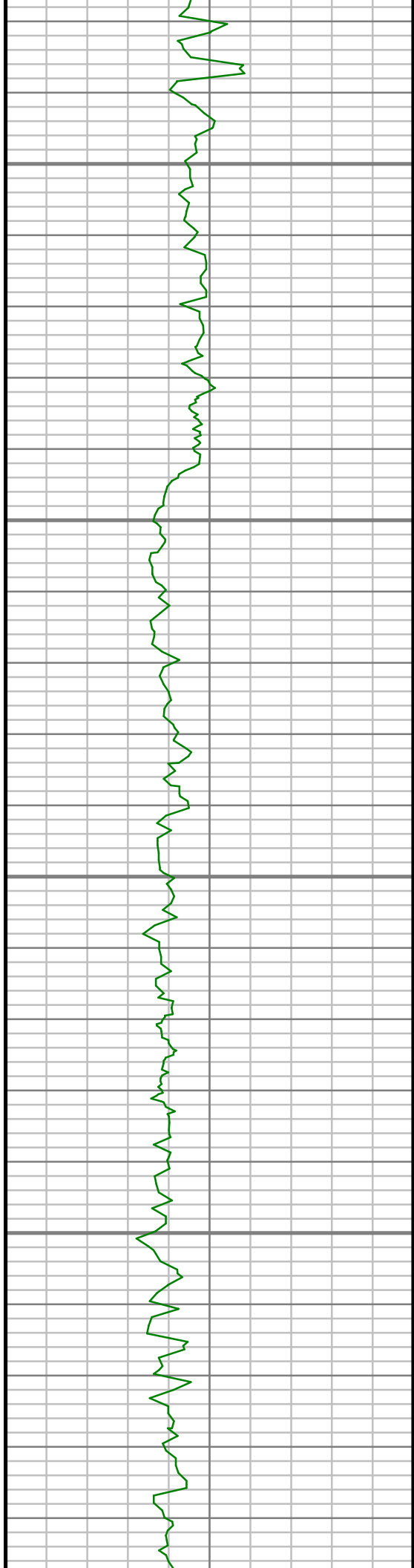
3950

4000

4050

4100



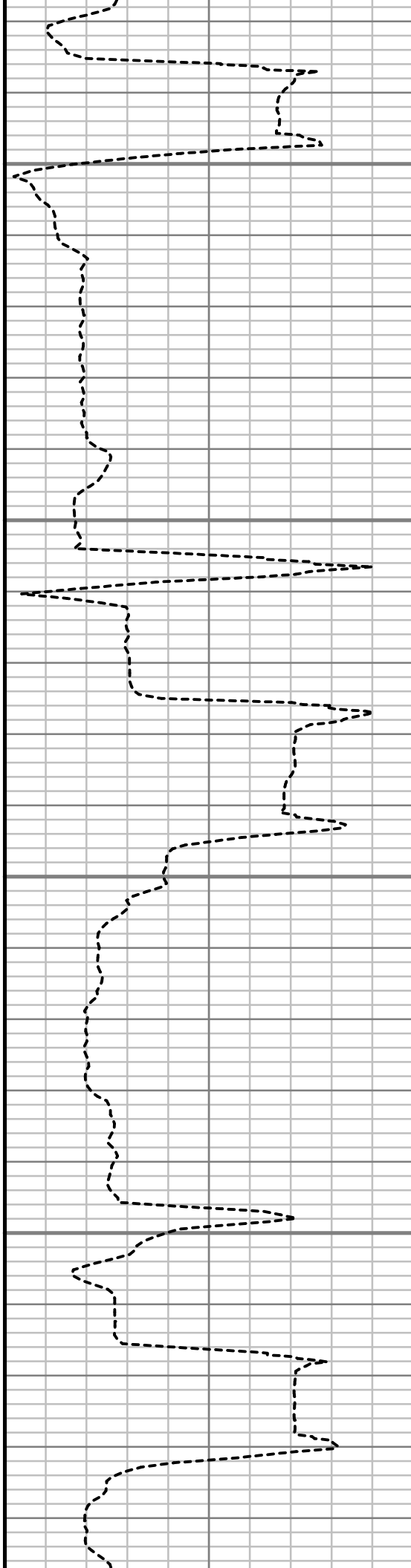


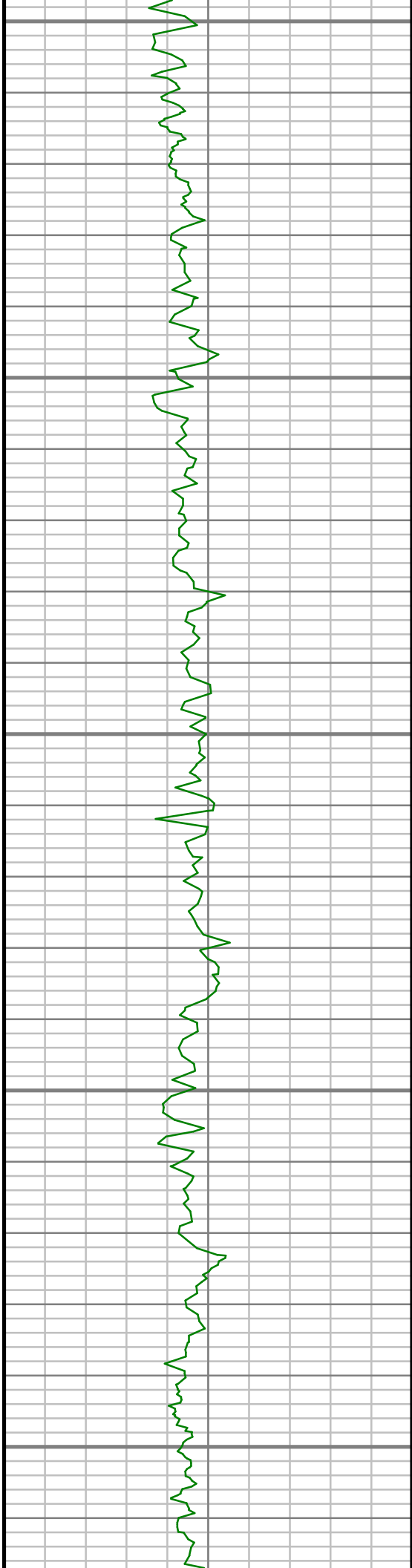
4150

4200

4250

4300





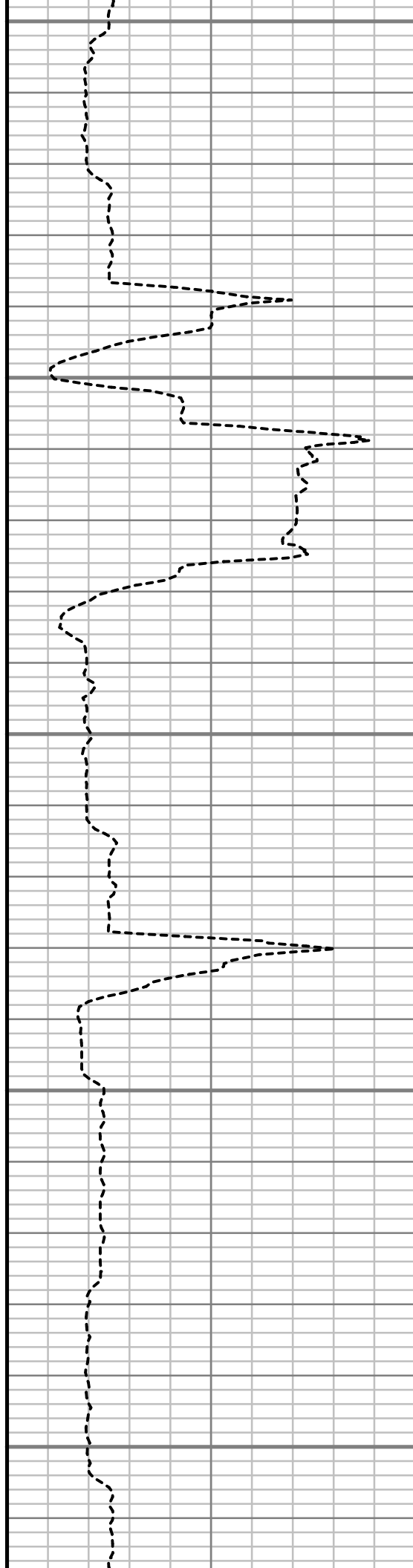
4350

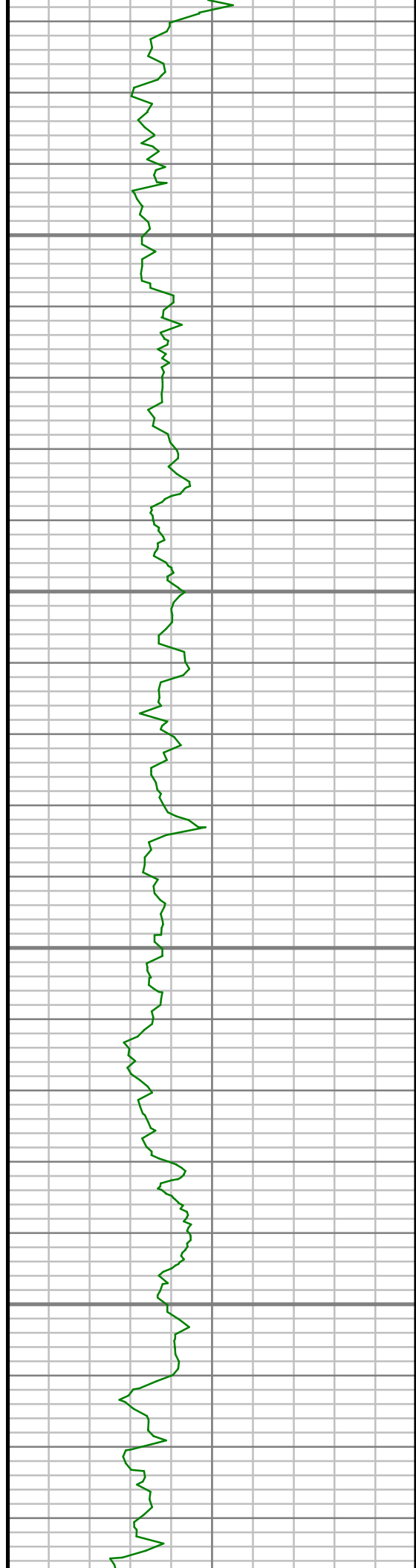
4400

4450

4500

4550



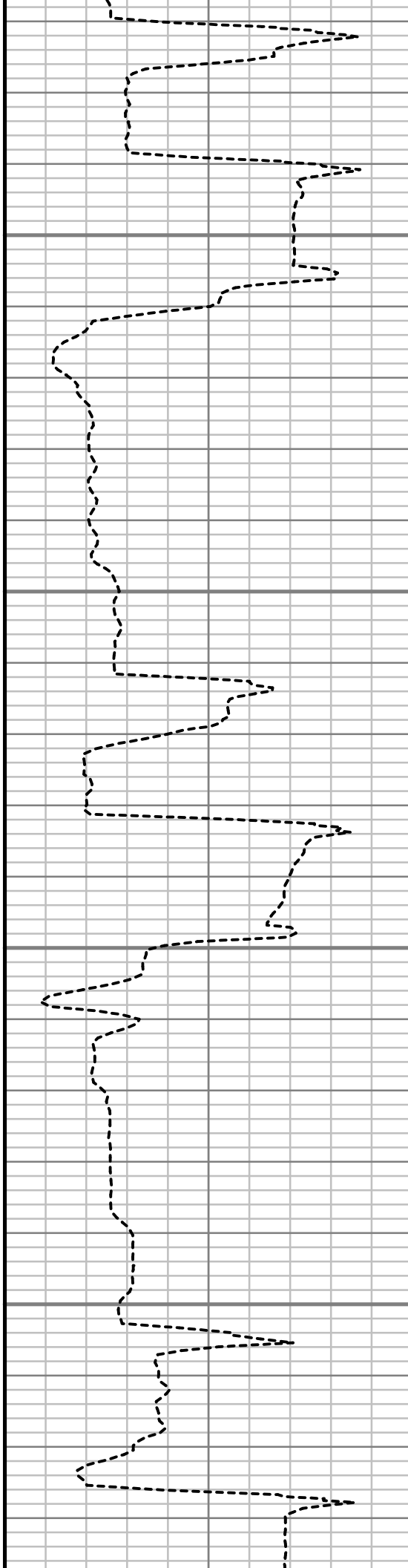


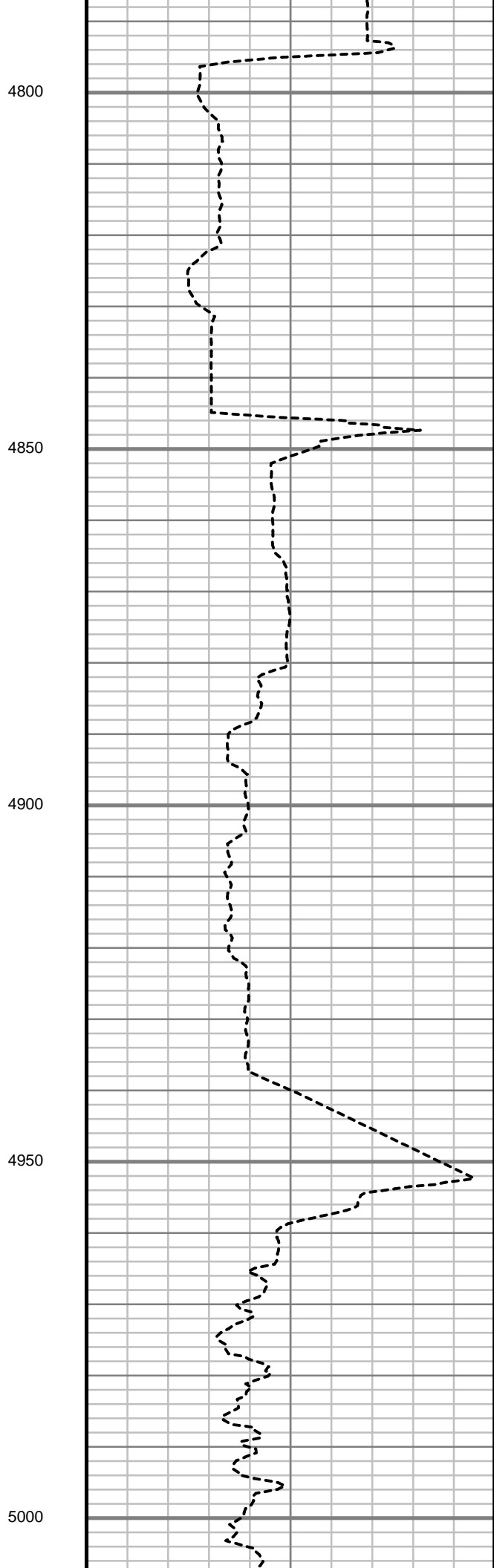
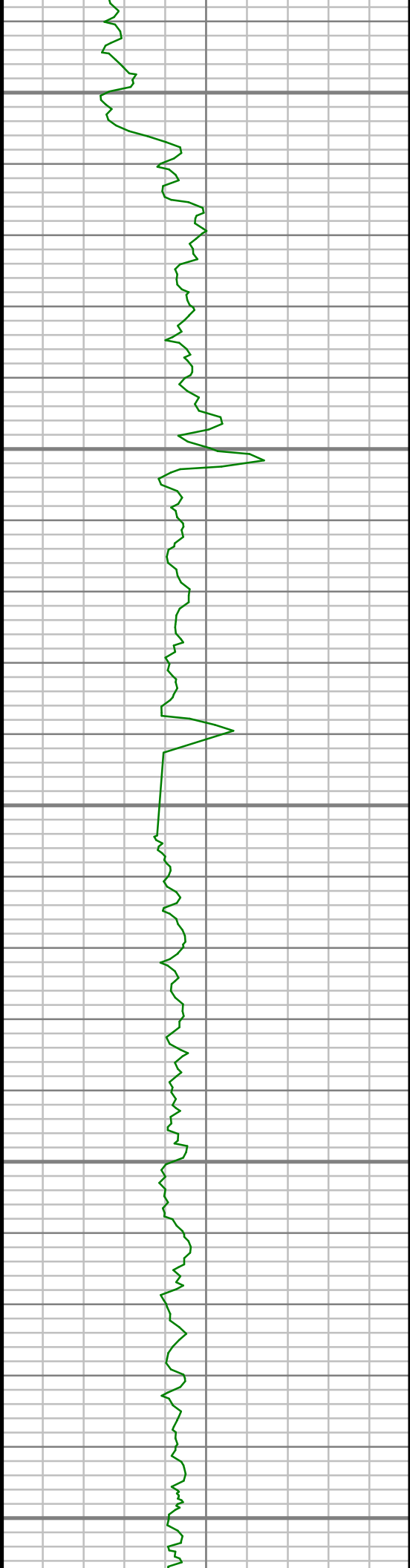
4600

4650

4700

4750





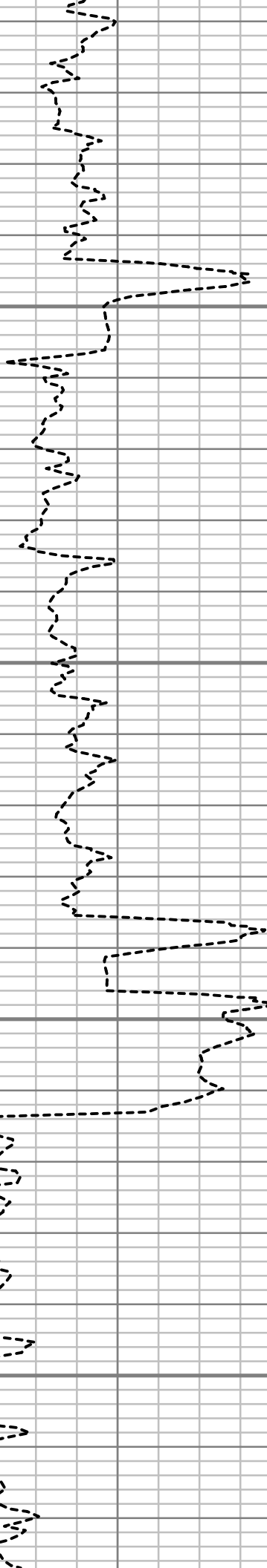


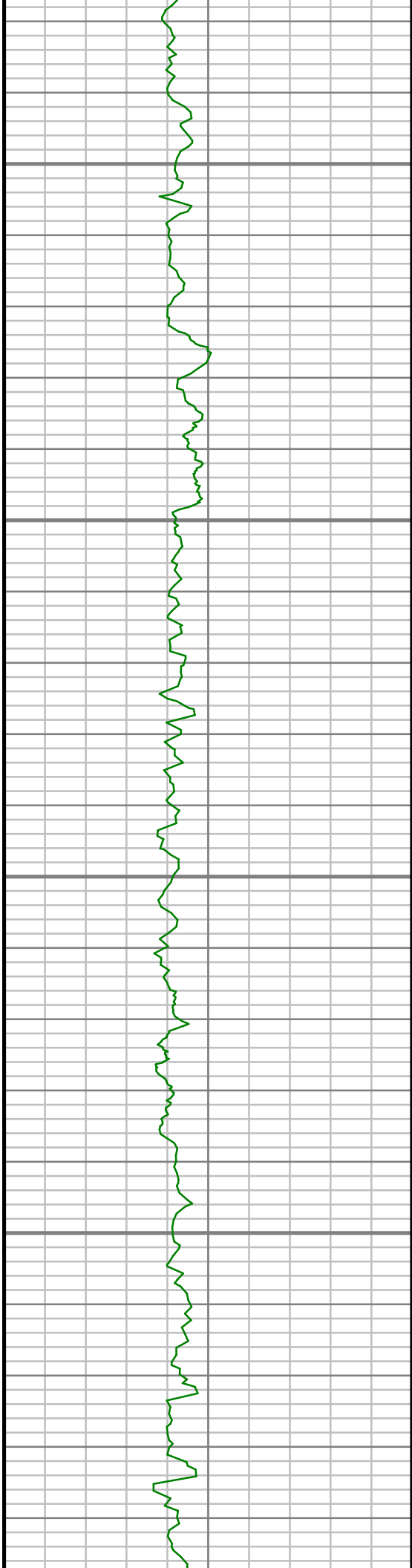
5050

5100

5150

5200



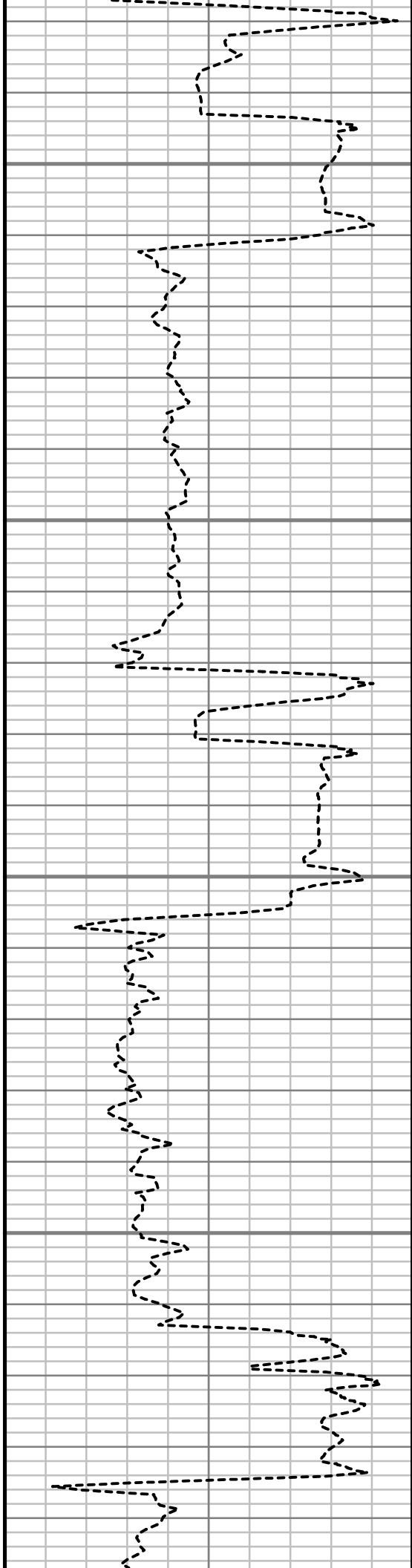


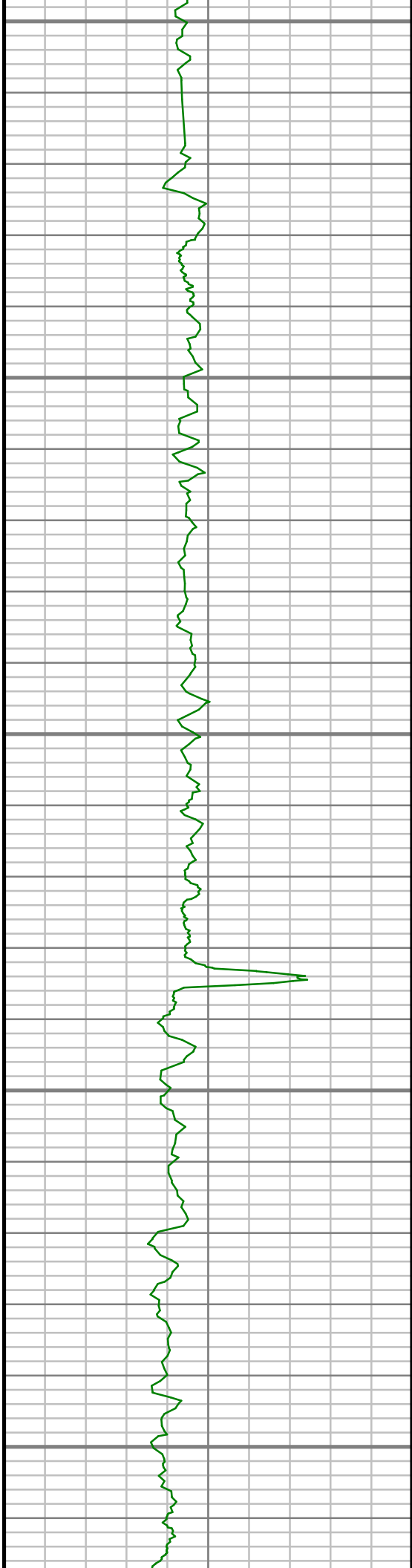
5250

5300

5350

5400





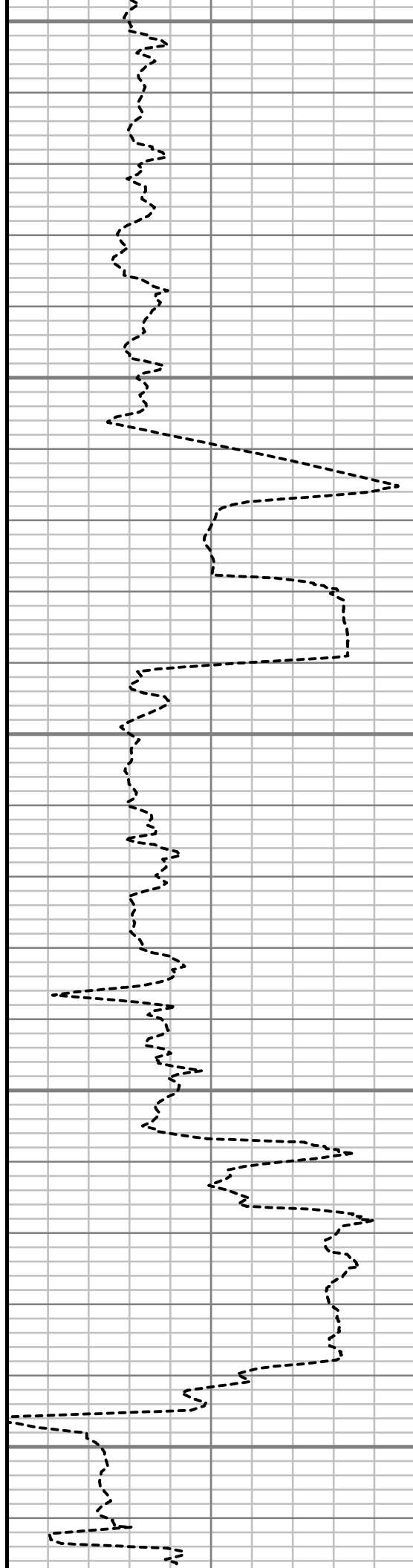
5450

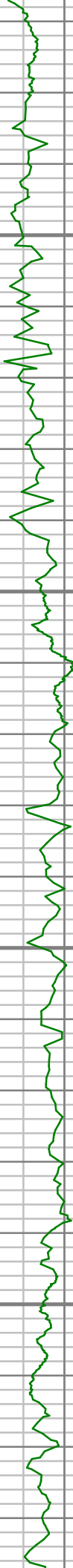
5500

5550

5600

5650



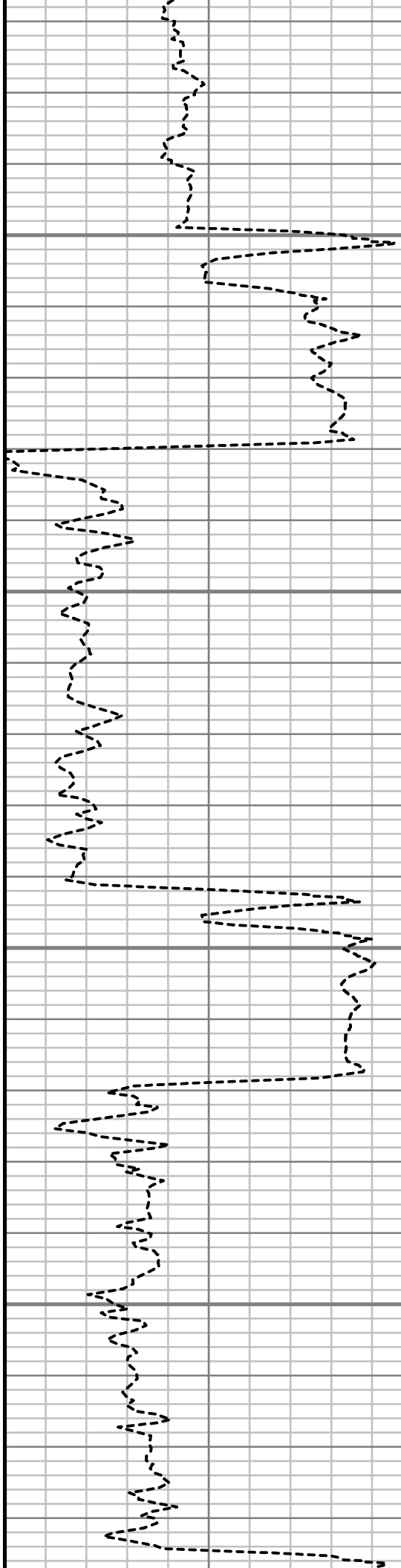


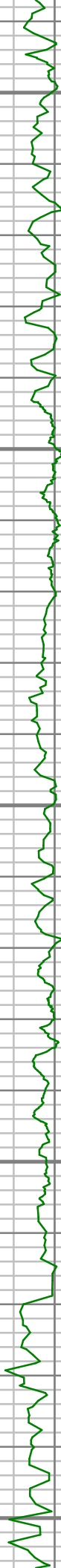
5700

5750

5800

5850





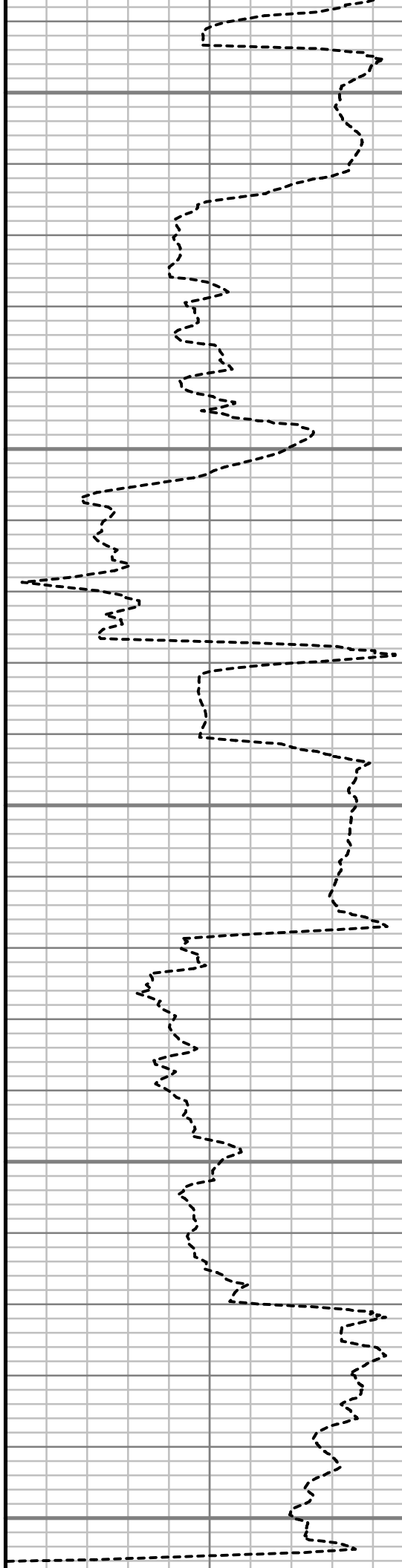
5900

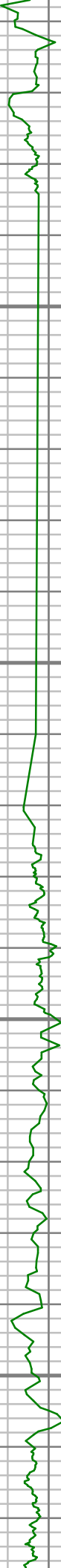
5950

6000

6050

6100



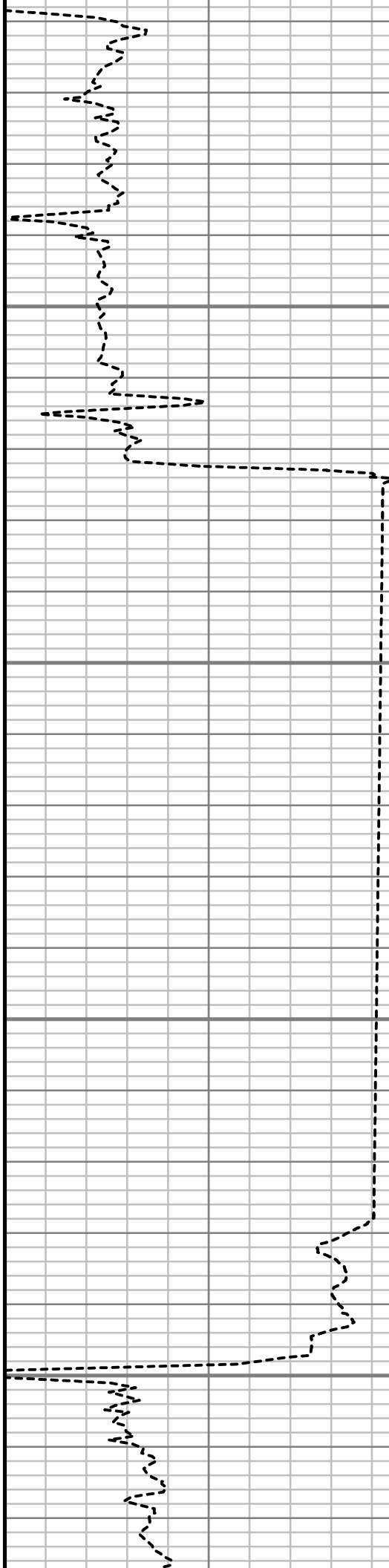


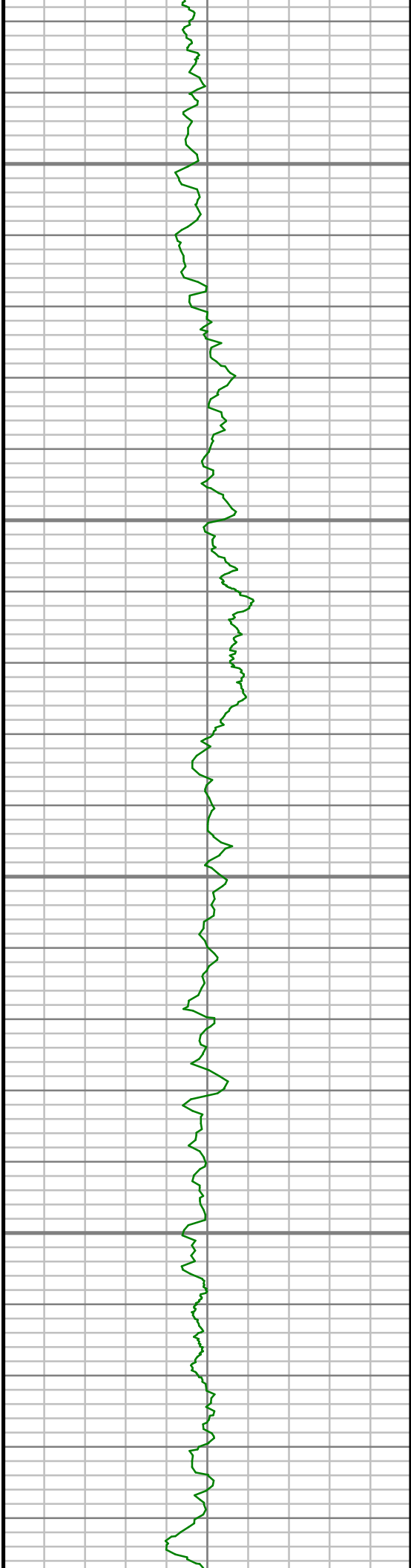
6150

6200

6250

6300



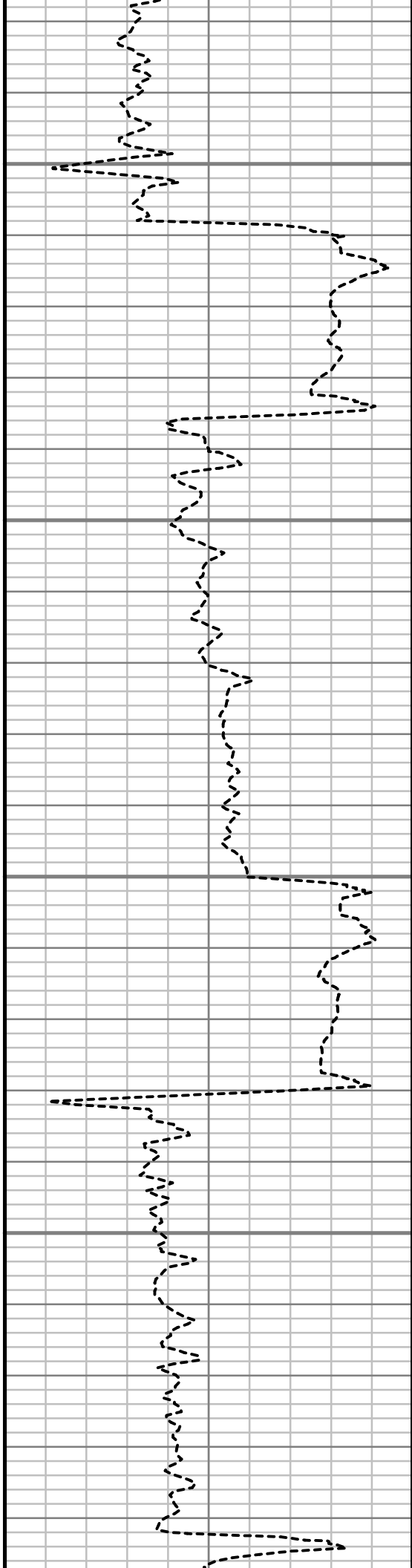


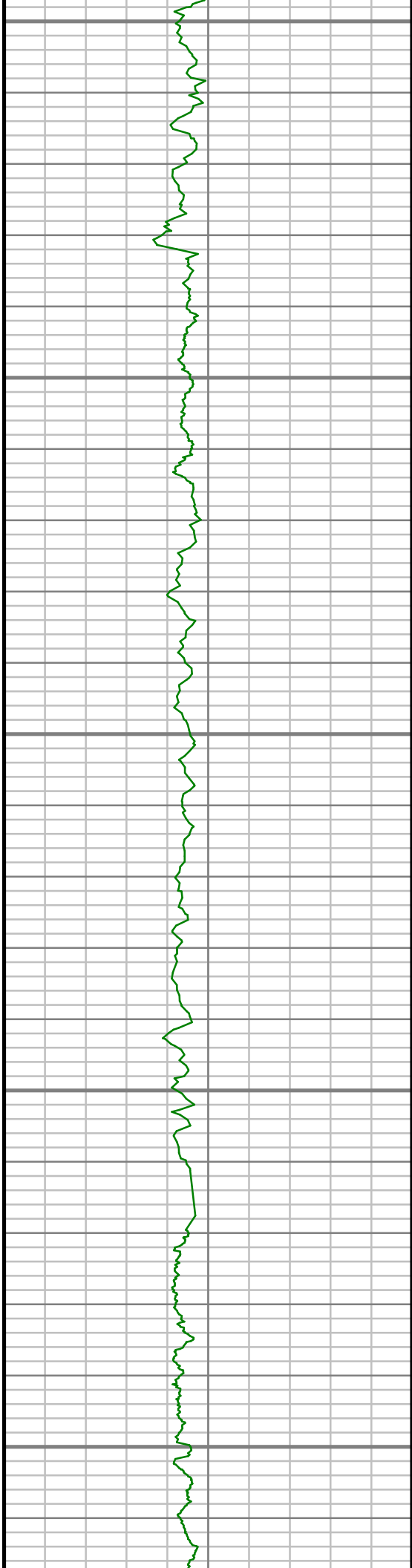
6350

6400

6450

6500





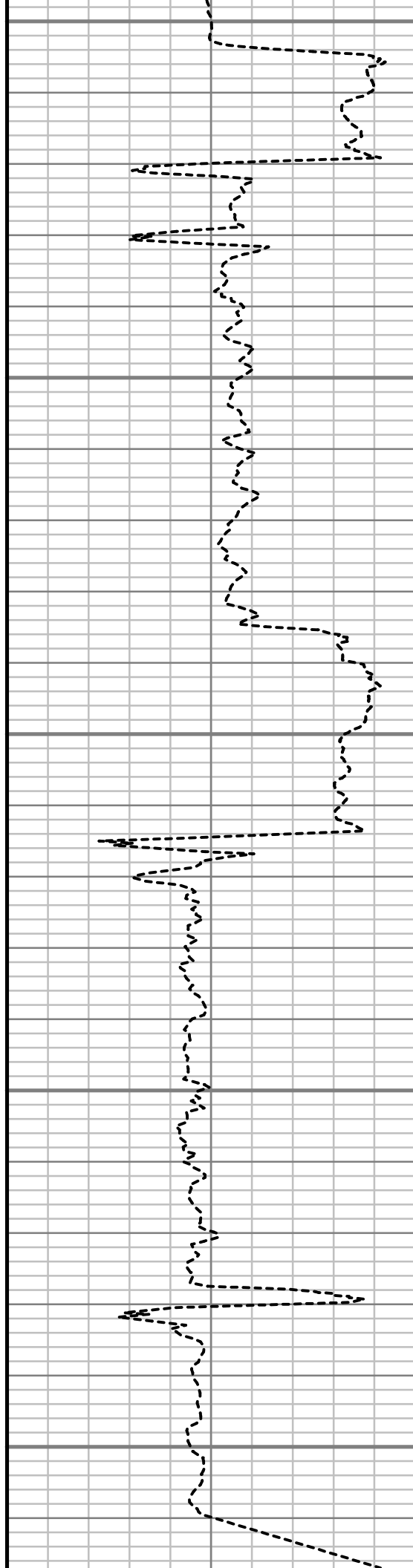
6550

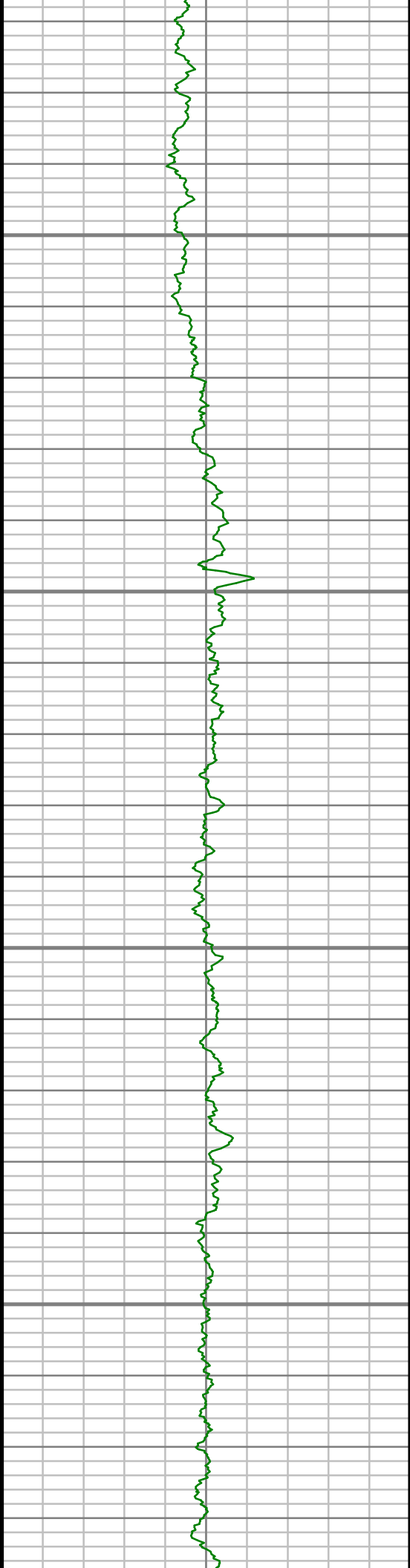
6600

6650

6700

6750



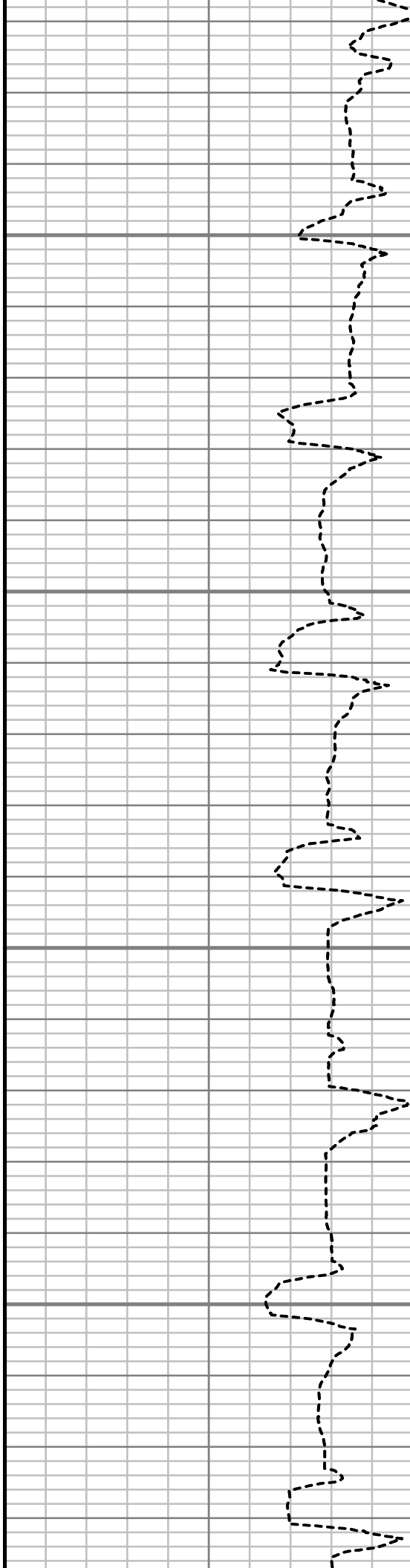


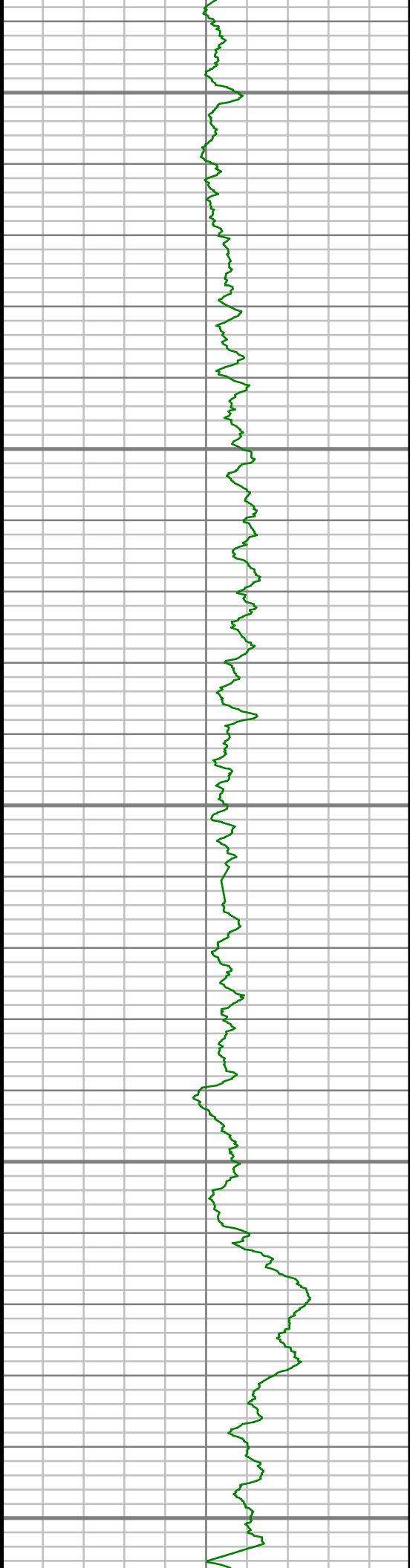
6800

6850

6900

6950





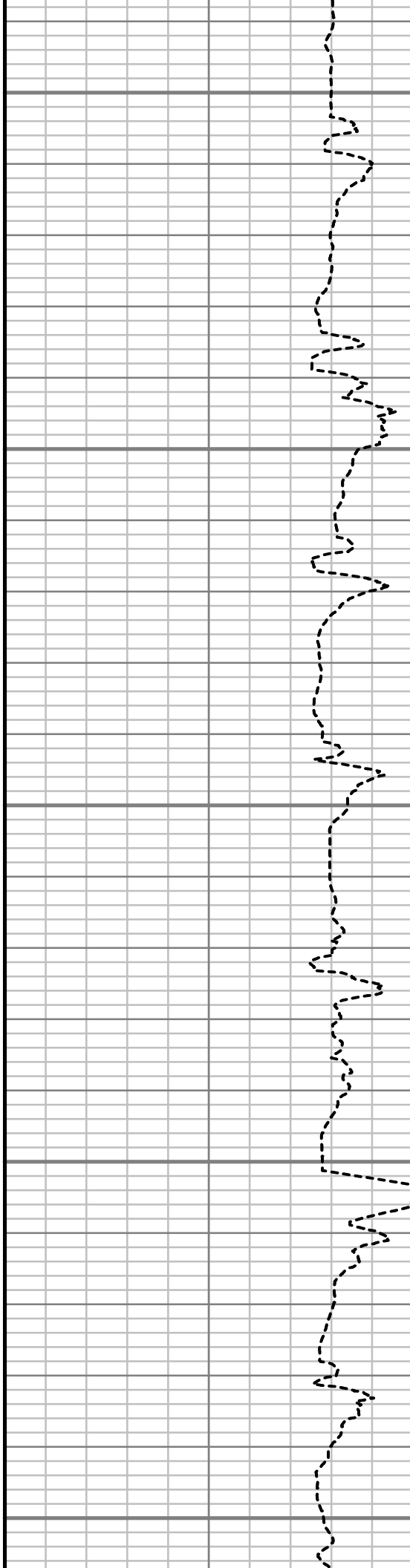
7000

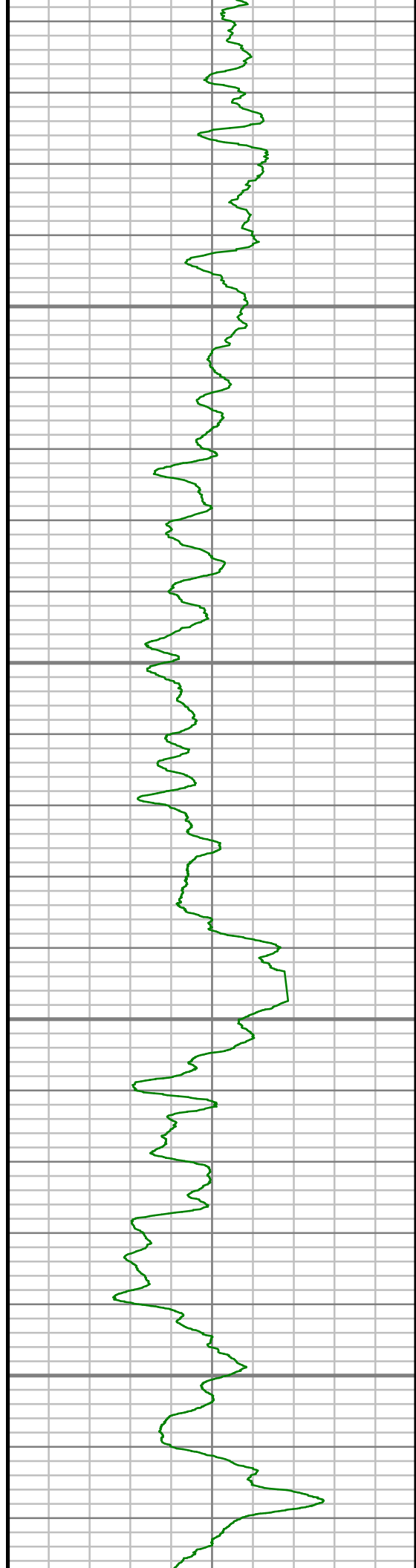
7050

7100

7150

7200



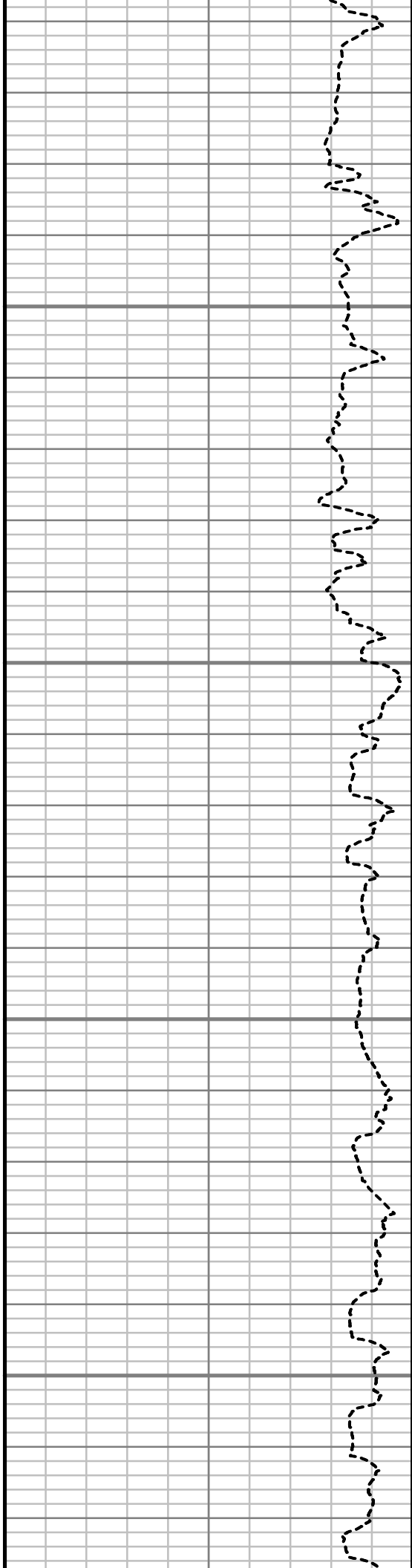


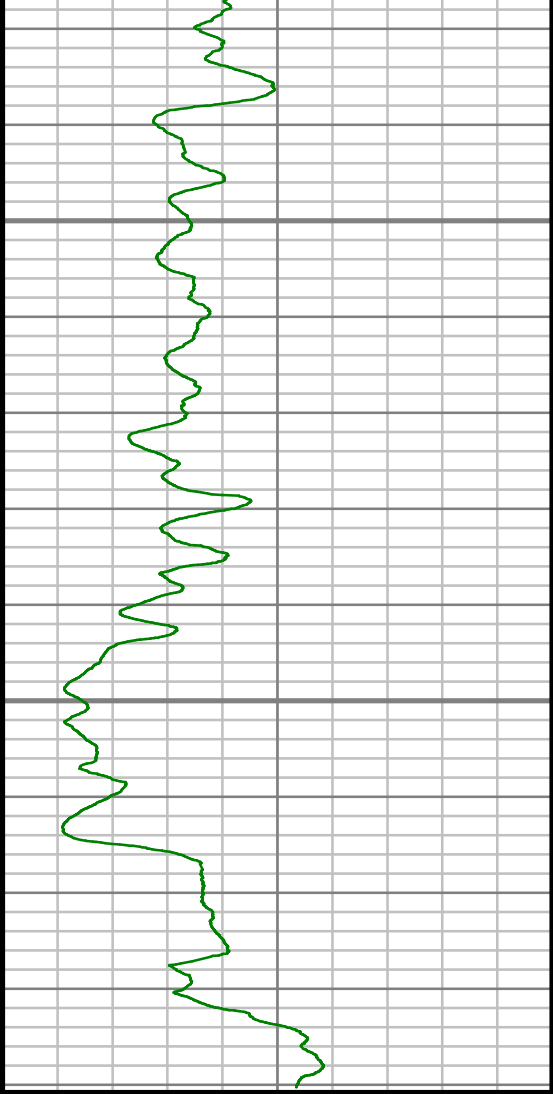
7250

7300

7350

7400





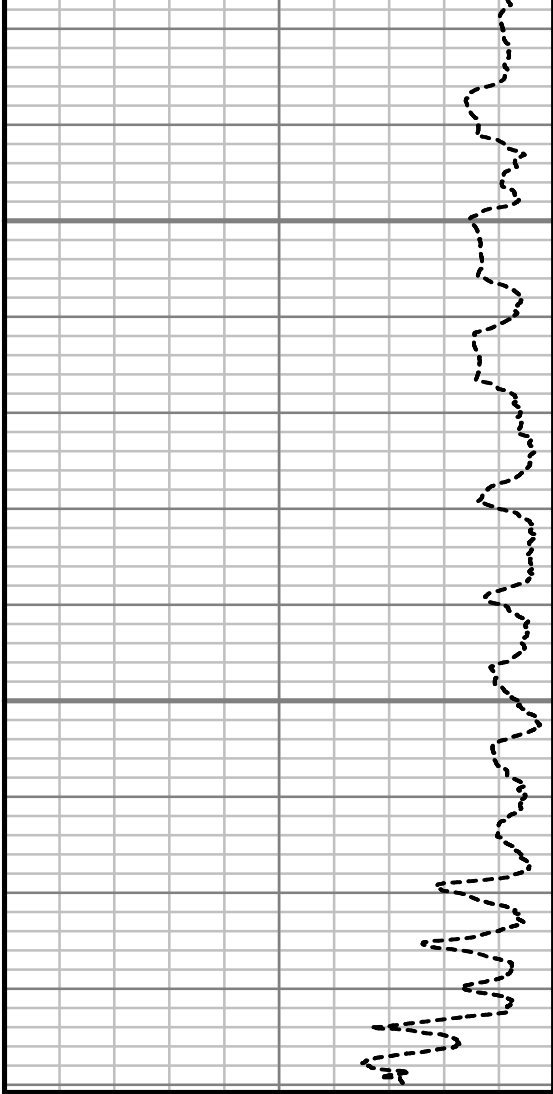
Gamma Ray (GR)

0 Unit = aapi 150

7450

7500

TRUE VERTICAL DEPTH
1240 (ft)



Rate of Penetration (ROP)

650 Unit = ft/hr 0

Comments

MWD Survey Report

Well Location	McCONAHAY
Well Name	McCONAHAY 1C-34H-H266
Survey Date	4/2/2014
Latitude	40°5'52.764"N
Longitude	104°45'27.828"W
Btotal	52594 nT
Dip	66.70 deg
Magnetic Declination	8.50 deg
North Reference	True North
Grid Correction	None
Depth Reference	R.K.B. (13.00 ft)
Calculation Method	Minimum Curvature
Section (VS) Ref	0.00N (ft), 0.00E (ft), 260.00Azim (deg)
Operator(s)	A. NEJAD, J. SMITH, M. SMITH

Well Notes

MD	Inc	Azim	TVD	VS	+N-S	+E-W	Closure Direction	Closure Distance	DLS
ft	deg	deg	ft	ft	ft	ft	deg	ft	°/100ft
0.00	0.00	0.00	0.00	0.00	0.00	0.00	0.00	0.00	Invalid
455.00	1.89	121.56	454.92	-5.63	-3.94	6.41	121.56	7.52	0.42
548.00	3.37	119.24	547.82	-8.90	-6.08	10.11	121.02	11.79	1.59
641.00	4.31	129.30	640.61	-13.29	-9.63	15.20	122.36	17.99	1.24
733.00	6.14	140.15	732.22	-18.00	-15.60	21.02	126.57	26.18	2.25
826.00	8.84	146.01	824.42	-23.38	-25.34	28.21	131.94	37.92	3.01
920.00	11.11	144.72	916.99	-30.19	-38.73	37.48	135.94	53.90	2.42
1012.00	13.00	150.11	1006.96	-37.49	-54.94	47.76	139.00	72.80	2.39
1089.00	12.09	153.29	1082.13	-42.76	-69.65	55.70	141.35	89.19	1.49
1188.00	11.27	150.35	1179.08	-48.99	-87.32	65.15	143.27	108.95	1.02
1373.00	12.01	149.57	1360.27	-61.79	-119.63	83.84	144.98	146.09	0.40
1559.00	11.57	146.58	1542.35	-75.96	-151.89	103.92	145.62	184.04	0.40
1745.00	13.88	154.84	1723.78	-89.22	-187.66	123.69	146.61	224.76	1.58
1931.00	15.68	155.16	1903.62	-101.50	-230.68	143.74	148.07	271.79	0.97
2122.00	15.64	158.04	2087.52	-113.45	-277.99	164.21	149.43	322.87	0.41
2312.00	15.08	158.29	2270.73	-123.77	-324.71	182.94	150.60	372.70	0.30
2503.00	13.13	160.53	2455.97	-132.39	-368.25	199.36	151.57	418.76	1.06
2693.00	11.38	159.29	2641.63	-139.42	-406.13	213.19	152.30	458.69	0.93
2884.00	9.23	151.66	2829.55	-147.75	-437.25	227.13	152.55	492.72	1.33

MD ft	Inc deg	Azim deg	TVD ft	VS ft	+N/-S ft	+E/-W ft	Closure Direction deg	Closure Distance ft	DLS °/100ft
3075.00	9.16	147.74	3018.10	-158.33	-463.59	242.51	152.39	523.19	0.33
3265.00	9.90	142.78	3205.47	-171.53	-489.40	260.47	151.98	554.40	0.58
3456.00	9.78	147.98	3393.67	-185.13	-516.24	279.01	151.61	586.81	0.47
3646.00	9.71	146.20	3580.92	-197.65	-543.24	296.49	151.38	618.89	0.16
3837.00	9.00	141.38	3769.38	-211.31	-568.30	314.77	151.02	649.65	0.56
4027.00	10.77	126.43	3956.59	-230.66	-590.45	338.33	150.19	680.51	1.63
4218.00	10.40	132.31	4144.35	-253.49	-612.65	365.43	149.19	713.36	0.60
4409.00	13.97	145.66	4331.05	-273.53	-643.30	391.18	148.70	752.90	2.37
4599.00	12.35	149.21	4516.06	-290.19	-679.69	414.52	148.62	796.12	0.95
4790.00	11.09	153.92	4703.08	-302.53	-713.73	433.05	148.75	834.83	0.83
4980.00	12.90	154.02	4888.93	-313.43	-749.21	450.37	148.99	874.16	0.95
5171.00	10.22	160.52	5076.04	-322.09	-784.36	465.36	149.32	912.02	1.56
5362.00	9.07	142.11	5264.38	-331.93	-812.23	480.27	149.40	943.60	1.71
5552.00	11.01	147.75	5451.47	-345.81	-839.40	499.15	149.26	976.60	1.14
5743.00	8.19	157.40	5639.78	-355.68	-867.40	514.12	149.34	1008.32	1.69
5934.00	8.42	139.50	5828.81	-365.75	-890.60	528.43	149.32	1035.57	1.35
6124.00	8.50	148.55	6016.76	-377.94	-913.15	544.79	149.18	1063.32	0.70
6315.00	10.83	147.97	6205.03	-389.83	-940.41	561.67	149.15	1095.37	1.22

MD ft	Inc deg	Azim deg	TVD ft	VS ft	+N/-S ft	+E/-W ft	Closure Direction deg	Closure Distance ft	DLS °/100ft
6505.00	10.16	152.37	6391.86	-401.60	-970.39	578.90	149.18	1129.95	0.55
6696.00	9.45	154.12	6580.07	-410.99	-999.42	593.56	149.29	1162.39	0.40
6791.00	10.34	158.06	6673.65	-414.89	-1014.35	600.15	149.39	1178.59	1.18
6823.00	9.48	156.12	6705.17	-416.12	-1019.42	602.29	149.42	1184.05	2.88
6855.00	8.67	156.83	6736.77	-417.30	-1024.05	604.31	149.45	1189.06	2.55
6886.00	7.84	157.80	6767.45	-418.28	-1028.15	606.03	149.48	1193.47	2.71
6918.00	8.50	163.34	6799.13	-419.02	-1032.44	607.53	149.53	1197.93	3.20
6950.00	10.38	173.43	6830.69	-419.12	-1037.57	608.54	149.61	1202.86	7.80
6982.00	12.48	181.27	6862.06	-418.27	-1043.89	608.79	149.75	1208.44	8.16
7013.00	14.35	187.65	6892.21	-416.45	-1051.05	608.20	149.94	1214.34	7.69
7045.00	16.75	190.87	6923.04	-413.60	-1059.51	606.81	150.20	1220.97	7.97
7077.00	18.68	194.93	6953.52	-409.80	-1068.99	604.62	150.51	1228.13	7.16
7109.00	21.04	199.17	6983.62	-404.84	-1079.37	601.41	150.87	1235.61	8.63
7140.00	22.99	205.64	7012.36	-398.60	-1090.09	596.96	151.29	1242.84	10.04
7172.00	24.09	210.82	7041.70	-390.69	-1101.34	590.91	151.78	1249.85	7.31
7204.00	24.69	216.45	7070.85	-381.57	-1112.32	583.59	152.32	1256.12	7.50
7236.00	26.76	223.17	7099.68	-370.96	-1122.95	574.69	152.90	1261.46	11.18
7268.00	28.77	227.79	7128.00	-358.68	-1133.38	564.05	153.54	1265.98	9.19

MD	Inc	Azim	TVD	VS	+N-S	+E-W	Closure Direction	Closure Distance	DLS
ft	deg	deg	ft	ft	ft	ft	deg	ft	°/100ft
7299.00	31.68	232.25	7154.79	-345.15	-1143.38	552.09	154.23	1269.70	11.86
7331.00	33.39	238.11	7181.77	-329.54	-1153.18	537.96	154.99	1272.49	11.20
7363.00	36.47	243.99	7208.01	-312.22	-1162.01	521.93	155.81	1273.84	14.26
7395.00	39.27	247.71	7233.27	-293.18	-1170.02	504.01	156.70	1273.96	11.27
7427.00	42.43	250.45	7257.48	-272.63	-1177.48	484.46	157.64	1273.25	11.36
7458.00	46.79	255.98	7279.55	-251.03	-1183.72	463.62	158.61	1271.28	18.82
7490.00	51.34	258.66	7300.51	-226.89	-1189.01	440.05	159.69	1267.83	15.56
7522.00	53.50	259.83	7320.03	-201.54	-1193.74	415.13	160.82	1263.86	7.36
7554.00	54.80	260.04	7338.77	-175.60	-1198.27	389.60	161.99	1260.02	4.09
7585.00	55.70	260.41	7356.44	-150.13	-1202.60	364.49	163.14	1256.62	3.08
7617.00	56.56	262.01	7374.27	-123.57	-1206.65	338.24	164.34	1253.16	4.95
7649.00	56.98	265.00	7391.81	-96.85	-1209.68	311.65	165.55	1249.18	7.93
7681.00	58.82	266.24	7408.81	-69.88	-1211.74	284.62	166.78	1244.72	6.61
7713.00	61.22	267.96	7424.80	-42.38	-1213.14	256.94	168.04	1240.05	8.83
7744.00	62.94	268.08	7439.32	-15.25	-1214.08	229.56	169.29	1235.60	5.57
7776.00	64.64	268.24	7453.45	13.16	-1215.01	200.87	170.61	1231.50	5.32
7808.00	66.24	268.02	7466.75	41.98	-1215.95	171.78	171.96	1228.03	5.02
7839.00	68.92	267.93	7478.57	70.35	-1216.97	143.15	173.29	1225.36	8.66

MD	Inc	Azim	TVD	VS	+N-S	+E-W	Closure Direction	Closure Distance	DLS
ft	deg	deg	ft	ft	ft	ft	deg	ft	°/100ft
7871.00	71.57	267.43	7489.39	100.20	-1218.19	113.06	174.70	1223.42	8.40
7903.00	73.93	267.20	7498.88	130.51	-1219.62	82.53	176.13	1222.41	7.43
7935.00	75.68	267.41	7507.26	161.14	-1221.07	51.69	177.58	1222.16	5.50
7967.00	77.72	267.91	7514.62	192.00	-1222.34	20.57	179.04	1222.52	6.56
7998.00	79.47	268.68	7520.75	222.07	-1223.24	-9.80	180.46	1223.28	6.15
8019.00	81.07	269.16	7524.30	242.51	-1223.63	-30.49	181.43	1224.01	7.91
8146.00	87.41	269.63	7537.04	367.11	-1224.96	-156.78	187.29	1234.95	5.01
8241.00	89.40	270.72	7539.69	460.57	-1224.67	-251.74	191.62	1250.27	2.38
8337.00	89.97	271.00	7540.22	554.85	-1223.23	-347.73	195.87	1271.69	0.66
8432.00	91.44	272.00	7539.05	647.94	-1220.74	-442.68	199.93	1298.53	1.88
8527.00	90.37	271.65	7537.55	740.91	-1217.72	-537.62	203.82	1331.12	1.19
8623.00	91.85	272.47	7535.69	834.77	-1214.27	-633.54	207.55	1369.61	1.76
8718.00	91.51	272.50	7532.90	927.48	-1210.16	-728.41	211.04	1412.47	0.36
8813.00	91.28	272.02	7530.59	1020.29	-1206.41	-823.30	214.31	1460.57	0.56
8908.00	91.18	272.46	7528.56	1113.11	-1202.69	-918.21	217.36	1513.14	0.47
9004.00	91.07	272.85	7526.67	1206.75	-1198.25	-1014.09	220.24	1569.77	0.42
9099.00	90.34	272.40	7525.50	1299.45	-1193.90	-1108.98	222.89	1629.49	0.91
9194.00	89.63	272.12	7525.53	1392.28	-1190.15	-1203.91	225.33	1692.88	0.80

MD ft	Inc deg	Azim deg	TVD ft	VS ft	+N/-S ft	+E/-W ft	Closure Direction deg	Closure Distance ft	DLS °/100ft
9290.00	89.03	271.13	7526.65	1486.31	-1187.43	-1299.86	227.59	1760.58	1.20
9385.00	89.53	271.68	7527.85	1579.42	-1185.10	-1394.82	229.65	1830.30	0.78
9480.00	89.73	272.77	7528.46	1672.26	-1181.41	-1489.75	231.58	1901.34	1.16
9575.00	89.03	272.74	7529.49	1764.91	-1176.85	-1584.63	233.40	1973.83	0.74
9671.00	89.53	273.37	7530.70	1858.42	-1171.73	-1680.49	235.11	2048.65	0.84
9766.00	88.99	271.55	7531.93	1951.17	-1167.65	-1775.39	236.67	2124.95	2.01
9861.00	90.57	271.98	7532.29	2044.18	-1164.73	-1870.34	238.09	2203.35	1.72
9956.00	90.77	271.89	7531.18	2137.12	-1161.53	-1965.28	239.42	2282.86	0.23
10052.00	90.94	273.23	7529.74	2230.81	-1157.24	-2061.17	240.69	2363.81	1.40
10147.00	88.11	272.06	7530.53	2323.49	-1152.86	-2156.05	241.87	2444.92	3.22
10242.00	88.42	271.97	7533.40	2416.37	-1149.52	-2250.95	242.95	2527.48	0.34
10337.00	88.82	271.54	7535.68	2509.35	-1146.61	-2345.88	243.95	2611.10	0.61
10433.00	89.23	271.21	7537.32	2603.44	-1144.31	-2441.84	244.89	2696.66	0.55
10528.00	89.93	271.35	7538.01	2696.61	-1142.18	-2536.81	245.76	2782.08	0.76
10623.00	89.66	269.69	7538.35	2790.00	-1141.31	-2631.80	246.56	2868.62	1.77
10718.00	90.47	268.26	7538.24	2883.84	-1143.01	-2726.78	247.26	2956.66	1.74
10813.00	91.45	267.14	7536.65	2977.97	-1146.83	-2821.69	247.88	3045.84	1.56
10909.00	91.75	266.69	7533.98	3073.23	-1152.00	-2917.51	248.45	3136.71	0.56

MD ft	Inc deg	Azim deg	TVD ft	VS ft	+N/-S ft	+E/-W ft	Closure Direction deg	Closure Distance ft	DLS °/100ft
11004.00	90.37	266.59	7532.22	3167.58	-1157.57	-3012.33	248.98	3227.09	1.45
11099.00	90.13	267.53	7531.80	3261.85	-1162.44	-3107.20	249.49	3317.53	1.02
11194.00	88.93	268.05	7532.58	3355.97	-1166.11	-3202.13	249.99	3407.85	1.38
11290.00	89.09	268.03	7534.24	3451.01	-1169.39	-3298.06	250.48	3499.24	0.18
11385.00	89.39	267.46	7535.50	3545.14	-1173.12	-3392.97	250.93	3590.05	0.68
11480.00	89.29	267.34	7536.58	3639.34	-1177.43	-3487.87	251.35	3681.25	0.17
11576.00	89.53	267.15	7537.57	3734.57	-1182.04	-3583.75	251.75	3773.66	0.31
11627.00	89.63	266.64	7537.94	3785.20	-1184.80	-3634.68	251.95	3822.91	1.02

5" = 100' FEET TVD