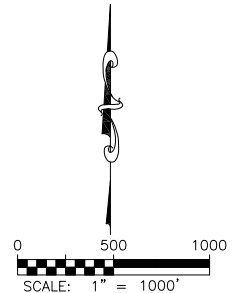
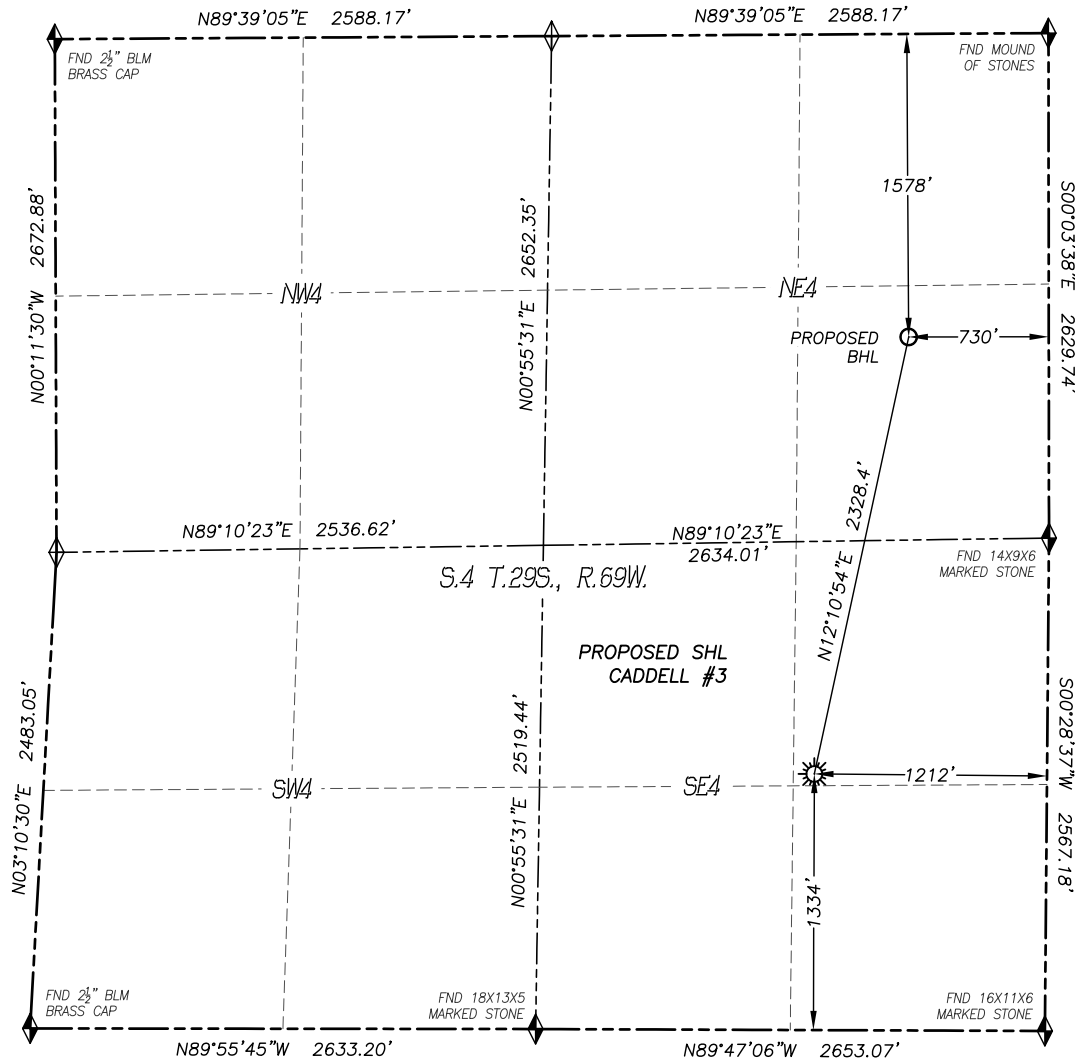


WELL LOCATION CERTIFICATE

CADDELL #3

SECTION: 4
TOWNSHIP: 29S
RANGE: 69W



LEGEND

- ◆ FOUND MONUMENT
- ◆ CALCULATED POSITION
- ☀ PROPOSED WELL
- BOTTOM HOLE
- ⊗ ABANDONED WELL
- ⊗ EXISTING WELL

IN ACCORDANCE WITH A REQUEST FROM TABULA RASA ENERGY, LLC., DALEY LAND SURVEYING, INC. HAS DETERMINED THE SURFACE LOCATION OF THE CADDELL #3 WELL TO BE 1334' FSL, 1212' FEL, AND THE BOTTOM HOLE TO BE 1578' FNL, 730' FEL, AS MEASURED AT NINETY (90) DEGREES FROM THE SECTION LINES OF SECTION 4, TOWNSHIP 29 SOUTH, RANGE 69 WEST OF THE 6TH PRINCIPAL MERIDIAN, HUERFANO COUNTY, COLORADO.

I HEREBY STATE THAT THIS WELL LOCATION CERTIFICATE WAS PREPARED BY ME OR UNDER MY DIRECT SUPERVISION, THAT THE WORK WAS COMPLETED ON 8/15/2014 FOR AND ON BEHALF OF TABULA RASA ENERGY, LLC., AND THAT THIS MAP DOES NOT REPRESENT A BOUNDARY SURVEY, IT IS NOT A LAND SURVEY PLAT OR AN IMPROVEMENT SURVEY PLAT AND IT IS NOT TO BE RELIED UPON FOR THE ESTABLISHMENT OF FENCE, BUILDING OR OTHER FUTURE IMPROVEMENT LINES.

NOTES:

- 1) BEARINGS FOR THIS MAP ARE ASSUMED AND BASED UPON GPS OBSERVATIONS MADE BETWEEN MONUMENTS LOCATED AT THE SOUTHEAST CORNER AND EAST QUARTER CORNER OF SECTION 4, T.29S., R.69W.
- 2) HORIZONTAL DATUM IS NAD83.
- 3) VERTICAL DATUM IS NAVD88 AND ORIGINATES FROM THE LOCAL C.O.R.S. NETWORK, UTILIZING THE GEOID12A MODEL.
- 4) SEE LOCATION DRAWING FOR VISIBLE IMPROVEMENTS WITHIN 500' OF PROPOSED DISTURBED AREA.
- 5) SURFACE USE: EXISTING WELL SITE
- 6) INST. OPERATOR: SCOTT ESTABROOKS.
- 7) NEAREST WELL: 50' SW

NEAREST CULTURAL ITEMS:

- | | |
|--------------------------------|----------|
| 1) BUILDING: | 801'± SE |
| 2) BUILDING UNIT: | 1206'± S |
| 3) HIGH OCC. BLD. UNIT: | 5280'+ |
| 4) DES. OUTSIDE ACTIVITY AREA: | 5280'+ |
| 5) PUBLIC ROAD: | 464'± S |
| 6) ABOVE GROUND UTILITY: | 313'± W |
| 7) RAILROAD: | 5280'+ |
| 8) PROPERTY LINE: | 350'± E |

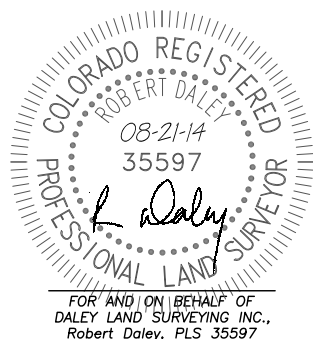
NAD83 LATITUDE AND LONGITUDE

SURFACE LOCATION:

LATITUDE: N37.55178°
LONGITUDE: W105.11176°
ELEV.: 7834'
PDOP: 1.1
QTR/QTR: NE4/SE4

BOTTOM HOLE:

LATITUDE: N37.55803°
LONGITUDE: W105.11006°



FOR AND ON BEHALF OF
DALEY LAND SURVEYING INC.,
Robert Daley, PLS 35597