

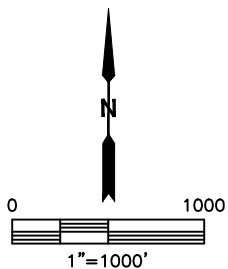
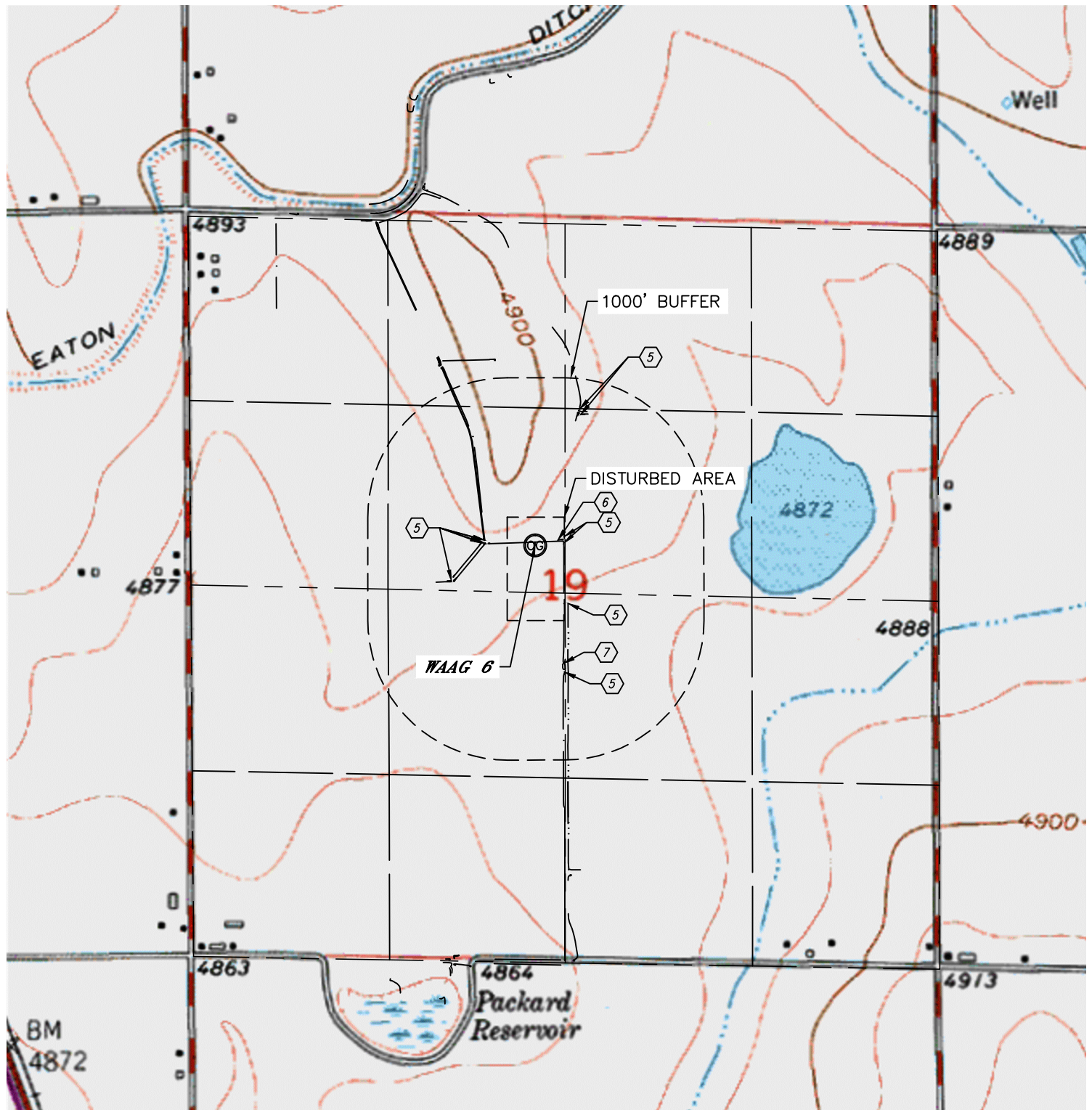


Lat40°, Inc. 1635 Foxtrail Drive, Suite 325 Loveland, CO 970-776-3321

HYDROLOGY MAP

WAAG MIDDLE PAD

SECTION: 19
TOWNSHIP: 7N
RANGE: 65W



- ⑤ DITCH 24' N, 206', 219', 997' & 1028' NE, 354', 363', 369' & 385' NW, 652' SW, 478' & 930' SE
- ⑥ LOW AREA 168' NE
- ⑦ POND 871' SE

DATE: 7/16/2014
PROJECT#: 2014064