



**COMPLETION
& PRODUCTION
SERVICES CO.**

MA RAY CCL
NT BOND VPI

	Company	NOBLE ENERGY INC.
	Well	DINNER 01-45
	Field	WATTENBERG
	County	WELD
	State	COLORADO
	Location:	AP #.: 06173234050
		Other Services
	SEC 1 TWP 4N RGE 65W NESE	Elevation
	Permanent Datum GL KB Elevation 4797	K.B. 4813 I.D.F. 4797
	Drilling Measured From KB	GL 4797
Date	Run Number	AUGUST 18 2014
Depth Driller		ONE
Depth Logger		7250
Bottom Logged Interval		1000
Top Log Interval		1000
Open Hole Size		SURFACE
Type Fluid		7-7/8 WATER
Density / Viscosity		N/A
Estimated Cement Top		N/A
Time Well Ready		41
Time Logger on Bottom		LEED RIG
Equipment Number		2-3/4 PROBE 4838
Location		GREEN NOLAN 45
Recorded By		KEVIN MOWAHAN
Witnessed By	Borehole Record	Tubing Record
Run Number	GR From To Size Weight From To	
Gearing Record	Size Weight	Top Bottom
Pack String	6-5/8 24# 16 30#	
Production String	4-1/2 11 6# M-80 16 7233	
Liner		

<<< Fold Here >>>

All interpretations are opinions based on inferences from electrical or other measurements and we cannot and do not guarantee the accuracy of interpretation, and we shall not except in the case of gross or willful negligence on our part, be liable or responsible for any loss, costs, damages incurred or sustained by anyone resulting from any interpretation made by any of our officers, agents or employees. These interpretations are subject to general terms and conditions set out in our current Price Schedule.

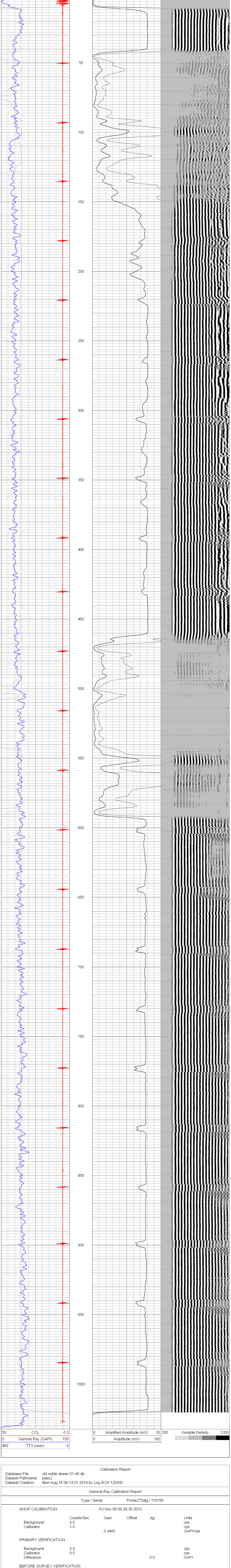
Comments

THANK YOU FOR SHOPPING HERE!!!

YOU FOR CHOOSING M
LOG NOT CORRELATED

inner 01-45.db

				0					



AFTER SURVEY VERIFICATION			
Background	0.0		cps
Calibrator	0.0		cps
Diffusion	0.0	0.0	ADU

Cement Bond Log Calibration Report

Serial Number:	110802	
Tool Model:	Probe275Digital	
Performed:	Mon Aug 18 09:14:21 2014	
Depth:	1031.03	ft
Casing Diameter:	4.5	in

Scaling Parameter:	3' Spacing	5' Spacing	
Signal Zero:	0.7	0	mV
Calibrated Amplitude:	81.1961	81.1961	mV
Reading at Signal Zero:	-0.00585938	-0.00576172	V
Reading in Free Pipe:	2.46028	2.34565	V
Gain:	32.2482	34.5307	

0.888954	0.19895
----------	---------