

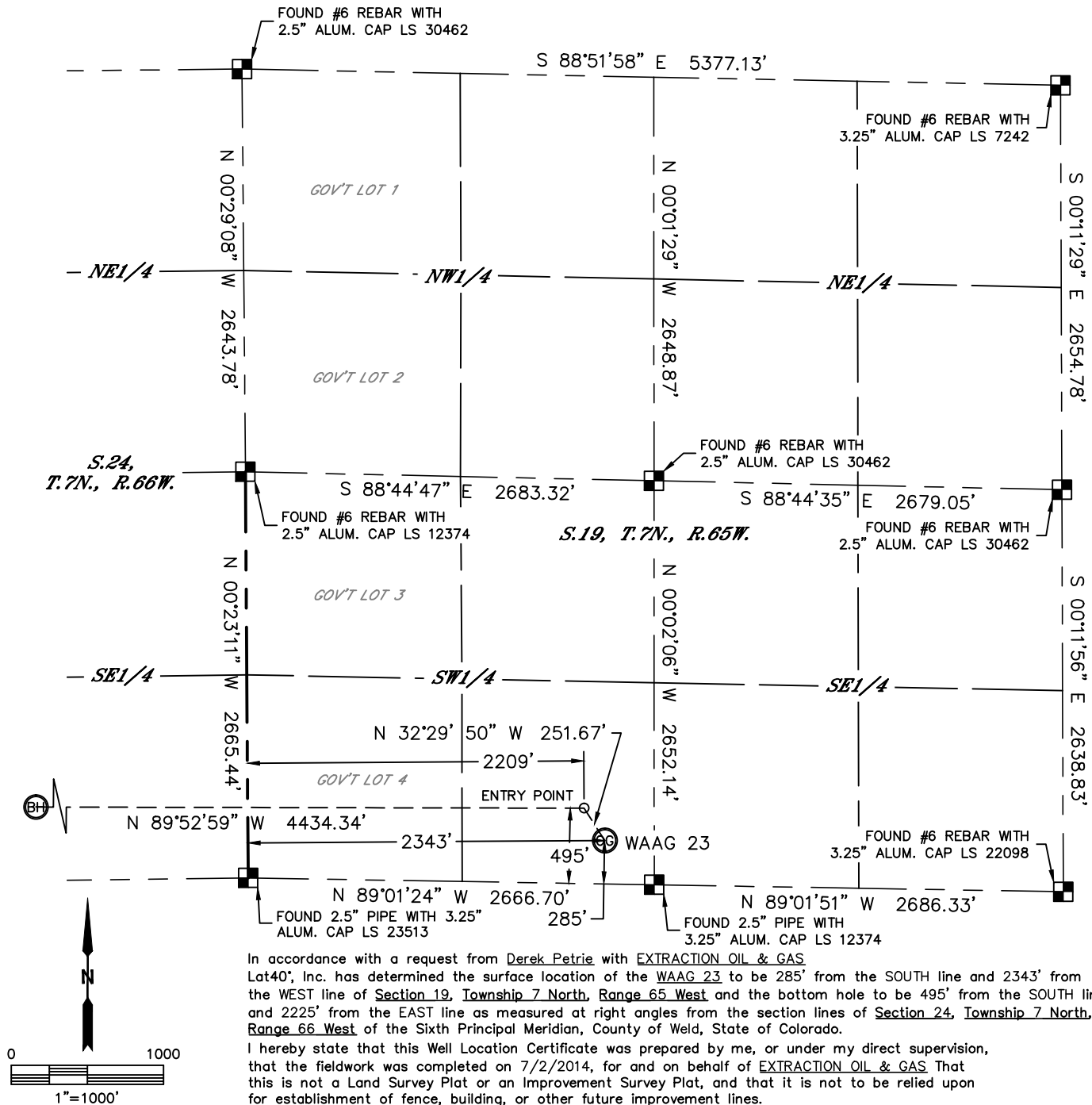


Lat40°, Inc. 1635 Foxtrail Drive, Suite 325 Loveland, CO 970-776-3321

# WELL LOCATION CERTIFICATE

THIS MAP DOES NOT REPRESENT A BOUNDARY SURVEY

SECTION: 19  
TOWNSHIP: 7N  
RANGE: 65W



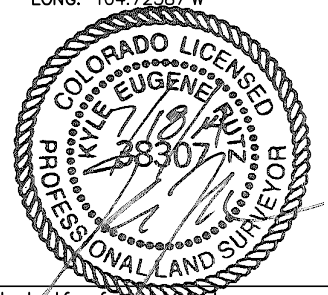
In accordance with a request from Derek Petrie with EXTRACTION OIL & GAS Lat40°, Inc. has determined the surface location of the WAAG 23 to be 285' from the SOUTH line and 2343' from the WEST line of Section 19, Township 7 North, Range 65 West and the bottom hole to be 495' from the SOUTH line and 2225' from the EAST line as measured at right angles from the section lines of Section 24, Township 7 North, Range 66 West of the Sixth Principal Meridian, County of Weld, State of Colorado.

I hereby state that this Well Location Certificate was prepared by me, or under my direct supervision, that the fieldwork was completed on 7/2/2014, for and on behalf of EXTRACTION OIL & GAS That this is not a Land Survey Plat or an Improvement Survey Plat, and that it is not to be relied upon for establishment of fence, building, or other future improvement lines.

**SURFACE LOCATION**  
LAT: 40.55426°N  
LONG: 104.70744°W  
PDOP: 1.8  
ELEV: 4868'  
1/4,1/4: SESW

**BOTTOM HOLE**  
LAT: 40.55498°N  
LONG: 104.72387°W

**ENTRY POINT**  
LAT: 40.55485°N  
LONG: 104.70792°W



**SHEET 1 OF 2**

Kyle E. Rutz—On behalf of Lat40°, Inc.  
Colorado Licensed Professional  
Land Surveyor No. 38307

DATE: rev7/15/2014  
PROJECT#: 2014064

## LEGEND

- = ALIQUOT MONUMENT AS DESCRIBED  
○ = CALCULATED POSITION

## NOTE:

- 1) Bearings shown are Grid Bearings of the Colorado State Plane Coordinate System, North Zone, North American Datum 1983/2007. The lineal dimensions as contained herein are based upon the "U.S. Survey Foot."
- 2) Ground elevations are based on an observed GPS elevation (NAVD 1988 DATUM).
- 3) IMPROVEMENTS: See LOCATION DRAWING for all visible improvements within 500' of disturbed area.
- 4) SURFACE USE: CROP LAND
- 5) INSTRUMENT OPERATOR: ADAM KELLY
- 6) NEAREST CULTURAL ITEMS:  
BUILDING: 1826' SE  
BUILDING UNIT: 1826' SE  
HIGH OCCUPANCY BUILDING UNIT: 5280'+  
DESIGNATED OUTSIDE ACTIVITY AREA: 5280'+  
PUBLIC ROAD: 276' S (CR 78)  
ABOVEGROUND UTILITY: 1382' SW  
RAILROAD: ±3684' SW  
PROPERTY LINE: 285' S

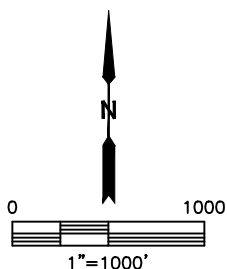
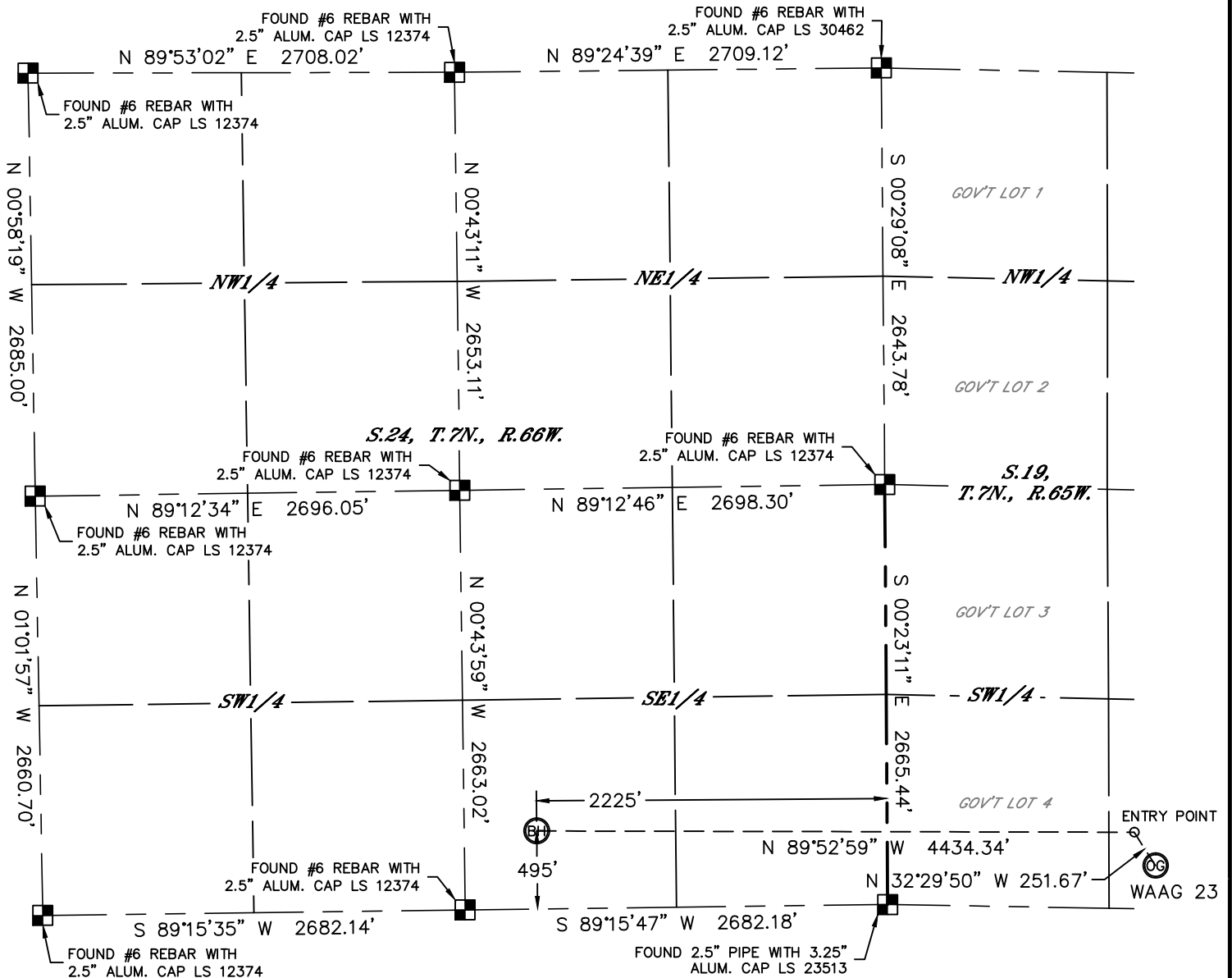


Lat40°, Inc. 1635 Foxtrail Drive, Suite 325 Loveland, CO 970-776-3321

# WELL LOCATION CERTIFICATE

THIS MAP DOES NOT REPRESENT A BOUNDARY SURVEY

SECTION: 19  
TOWNSHIP: 7N  
RANGE: 65W



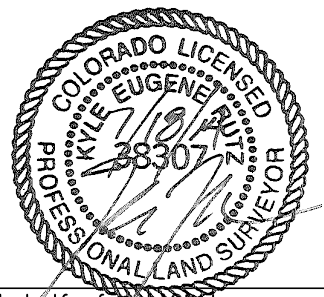
## LEGEND

- = ALIQUOT MONUMENT AS DESCRIBED
- = CALCULATED POSITION

SHEET 2 OF 2

Kyle E. Rutz—On behalf of Lat40°, Inc.  
Colorado Licensed Professional  
Land Surveyor No. 38307

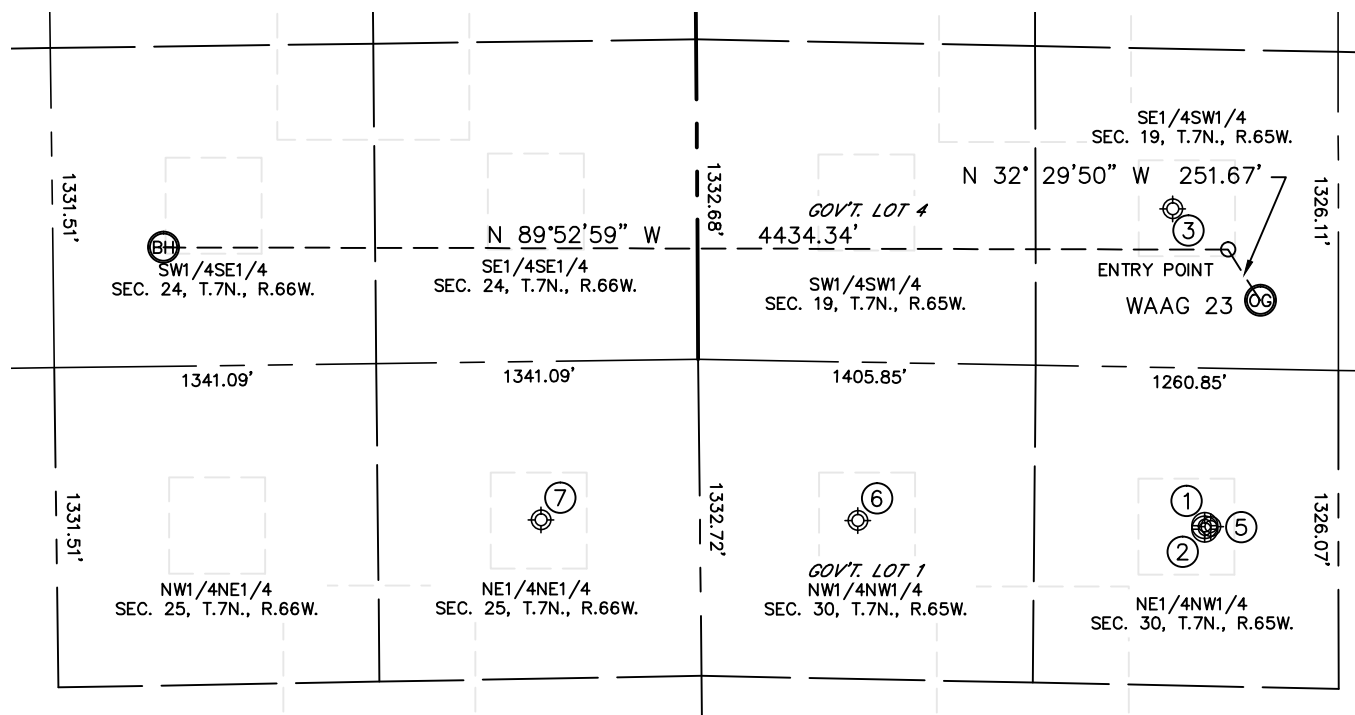
DATE: rev7/15/2014  
PROJECT#: 2014064



# SITE SKETCH

WAAG 23

SECTION: 19  
TOWNSHIP: 7N  
RANGE: 65W



WELL NO.	WELL NAME	SHL FOOTAGE				SHL LAT°	SHL LONG°	PDOP	ELEV (FT.)	1/4/1/4
1	GODBY 2-30	657	FNL	2102	FWL	40.55169	-104.70830	2.3	4866	NENW
2	GODBY 6-30	670	FNL	2102	FWL	40.55165	-104.70830	2.3	4867	NENW
3	FARR FARMS 1 (PA)	660	FSL	1980	FWL	40.55534	-104.70871	N/A	4863	SESW
5	MILE HIGH SHEEP 2 (PA)	660	FNL	2130	FWL	40.55159	-104.70815	N/A	4863	NENW
6	MILE HIGH SHEEP 12-30 (PA)	660	FNL	660	FWL	40.55168	-104.71343	N/A	4860	NWNW
7	ANDERSON 1-25 (PA)	660	FNL	660	FEL	40.55172	-104.71819	N/A	4856	NENE

NOTE: THE ABANDONED WELL DATA SHOWN IN RED ABOVE WAS OBTAINED FROM COGCC SCOUT CARDS.

