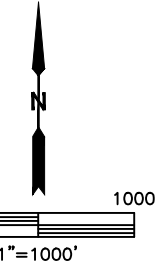
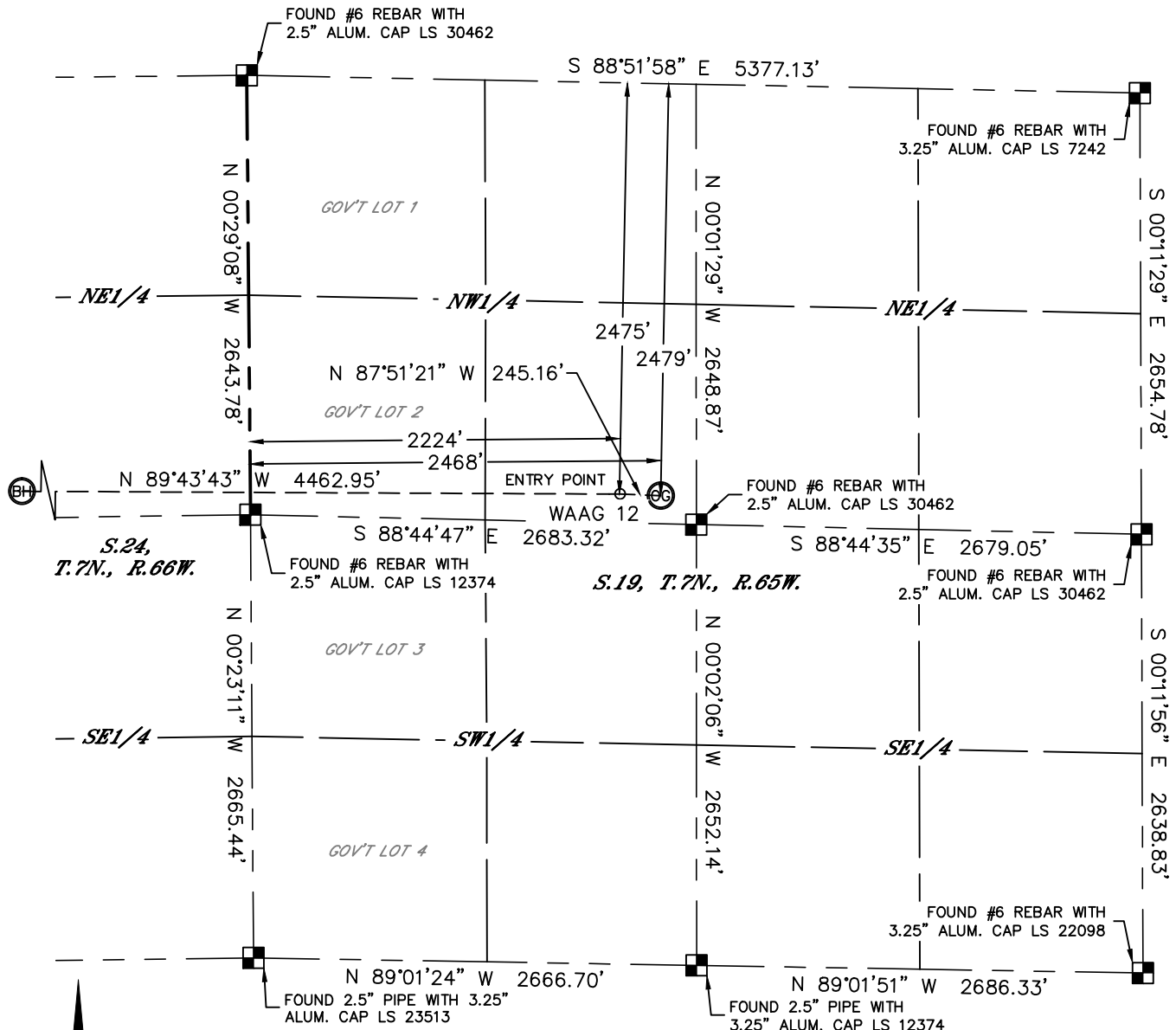




WELL LOCATION CERTIFICATE

SECTION: 19
TOWNSHIP: 7N
RANGE: 65W

THIS MAP DOES NOT REPRESENT A BOUNDARY SURVEY



In accordance with a request from Derek Petrie with EXTRACTION OIL & GAS Lat40°, Inc. has determined the surface location of the WAAG 12 to be 2479' from the NORTH line and 2468' from the WEST line of Section 19, Township 7 North, Range 65 West and the bottom hole to be 2475' from the NORTH line and 2239' from the EAST line as measured at right angles from the section lines of Section 24, Township 7 North, Range 66 West of the Sixth Principal Meridian, County of Weld, State of Colorado.

I hereby state that this Well Location Certificate was prepared by me, or under my direct supervision, that the fieldwork was completed on 7/2/2014, for and on behalf of EXTRACTION OIL & GAS That this is not a Land Survey Plat or an Improvement Survey Plat, and that it is not to be relied upon for establishment of fence, building, or other future improvement lines.

NOTE:

- 1) Bearings shown are Grid Bearings of the Colorado State Plane Coordinate System, North Zone, North American Datum 1983/2007. The lineal dimensions as contained herein are based upon the "U.S. Survey Foot."
- 2) Ground elevations are based on an observed GPS elevation (NAVD 1988 DATUM).
- 3) IMPROVEMENTS: See LOCATION DRAWING for all visible improvements within 500' of disturbed area.
- 4) SURFACE USE: CROP LAND
- 5) INSTRUMENT OPERATOR: ADAM KELLY
- 6) NEAREST CULTURAL ITEMS:
BUILDING: 2539' SW
BUILDING UNIT: 2539' SW
HIGH OCCUPANCY BUILDING UNIT: 5280'+
DESIGNATED OUTSIDE ACTIVITY AREA: 5280'+
PUBLIC ROAD: ±2457' W (CR 37)
ABOVEGROUND UTILITY: 1539' NW
RAILROAD: ±4688' SW
PROPERTY LINE: 169' S

SURFACE LOCATION

LAT: 40.56121°N
LONG: 104.70697°W
PDOP: 1.7
ELEV: 4885'
1/4,1/4: SENW

BOTTOM HOLE

LAT: 40.56141°N
LONG: 104.72390°W

ENTRY POINT

LAT: 40.56125°N
LONG: 104.70785°W

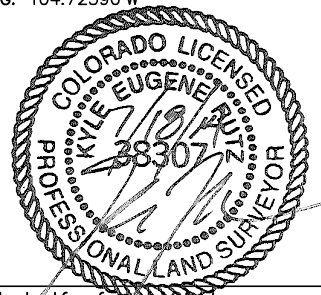
LEGEND

- = ALIQUOT MONUMENT AS DESCRIBED
- = CALCULATED POSITION

SHEET 1 OF 2

Kyle E. Rutz—On behalf of Lat40°, Inc.
Colorado Licensed Professional
Land Surveyor No. 38307

DATE: rev7/15/2014
PROJECT#: 2014064

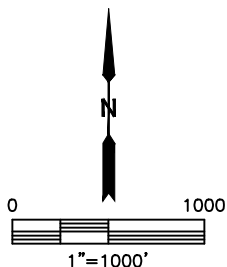
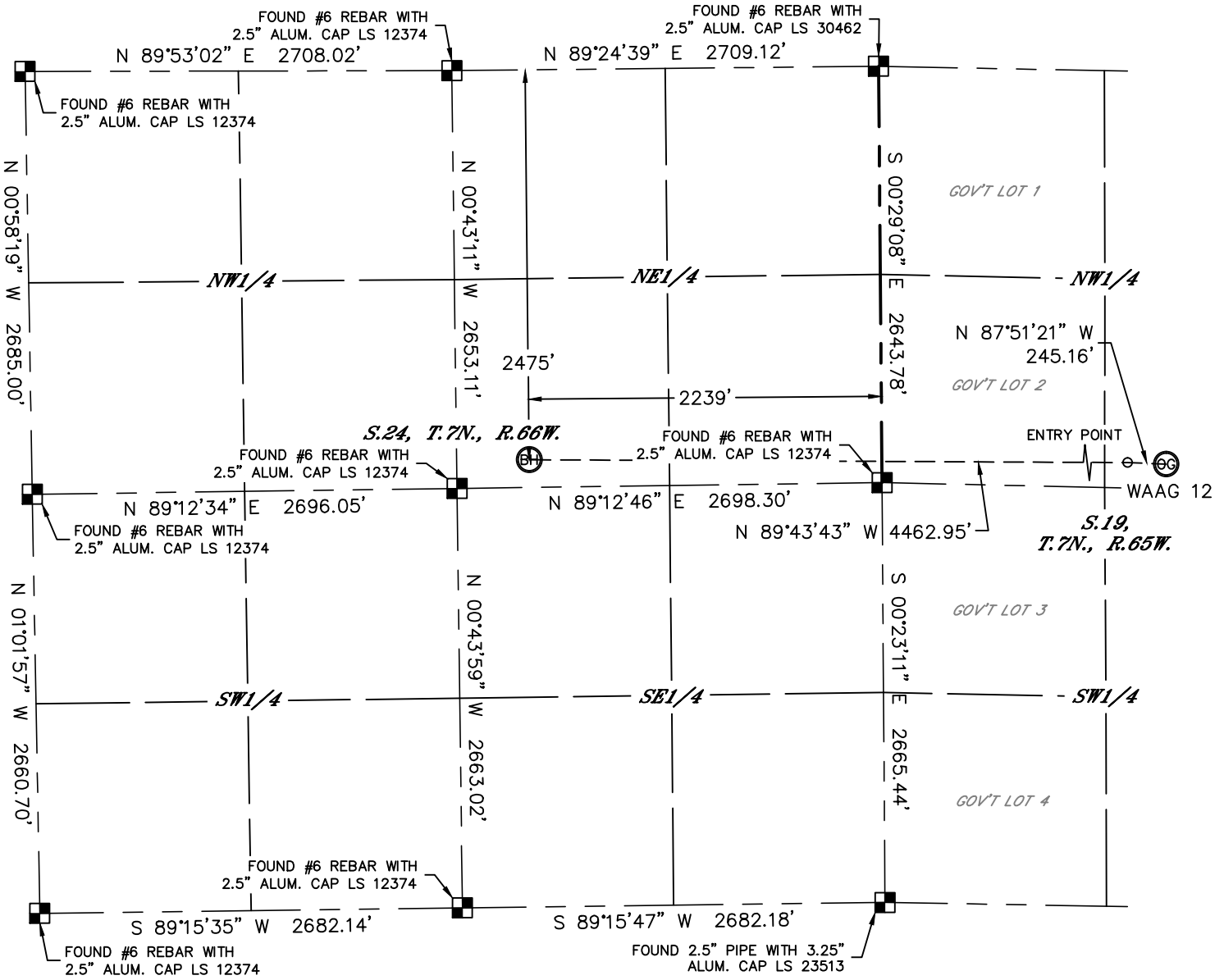




WELL LOCATION CERTIFICATE

SECTION: 19
TOWNSHIP: 7N
RANGE: 65W

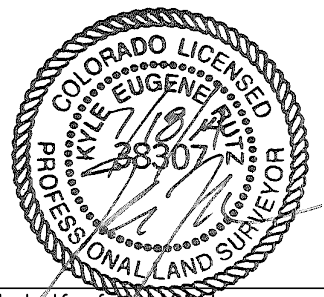
THIS MAP DOES NOT REPRESENT A BOUNDARY SURVEY



LEGEND

- = ALIQUOT MONUMENT AS DESCRIBED
- = CALCULATED POSITION

SHEET 2 OF 2



Kyle E. Rutz—On behalf of Lat40°, Inc.
 Colorado Licensed Professional
 Land Surveyor No. 38307

DATE: rev7/15/2014
 PROJECT#: 2014064

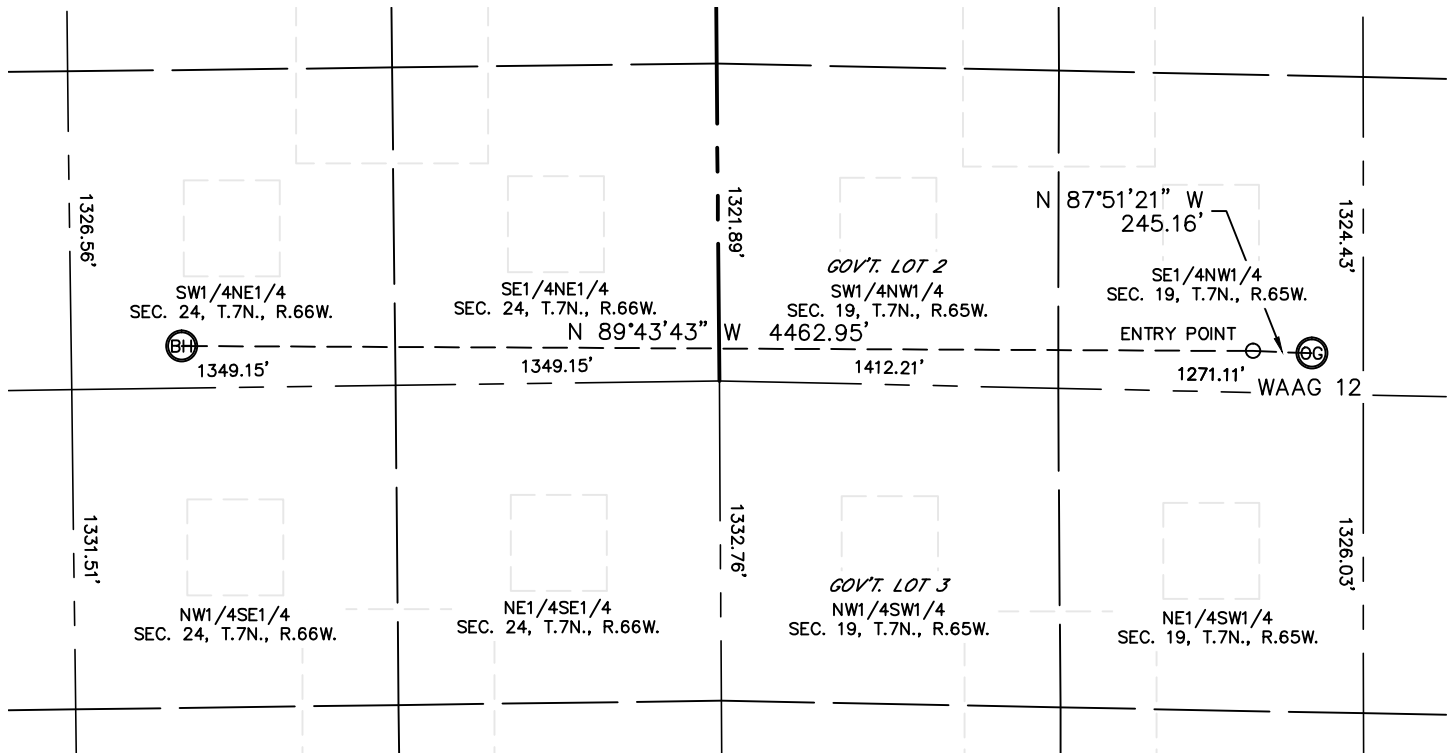


Lat40°, Inc. 1635 Foxtrail Drive, Suite 325 Loveland, CO 970-776-3321

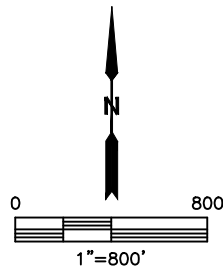
SITE SKETCH

WAAG 12

SECTION: 19
TOWNSHIP: 7N
RANGE: 65W



NOTE: NO EXISTING WELLS ADJACENT TO PROPOSED WELL BORE.



DATE: rev7/15/2014
PROJECT#: 2014064