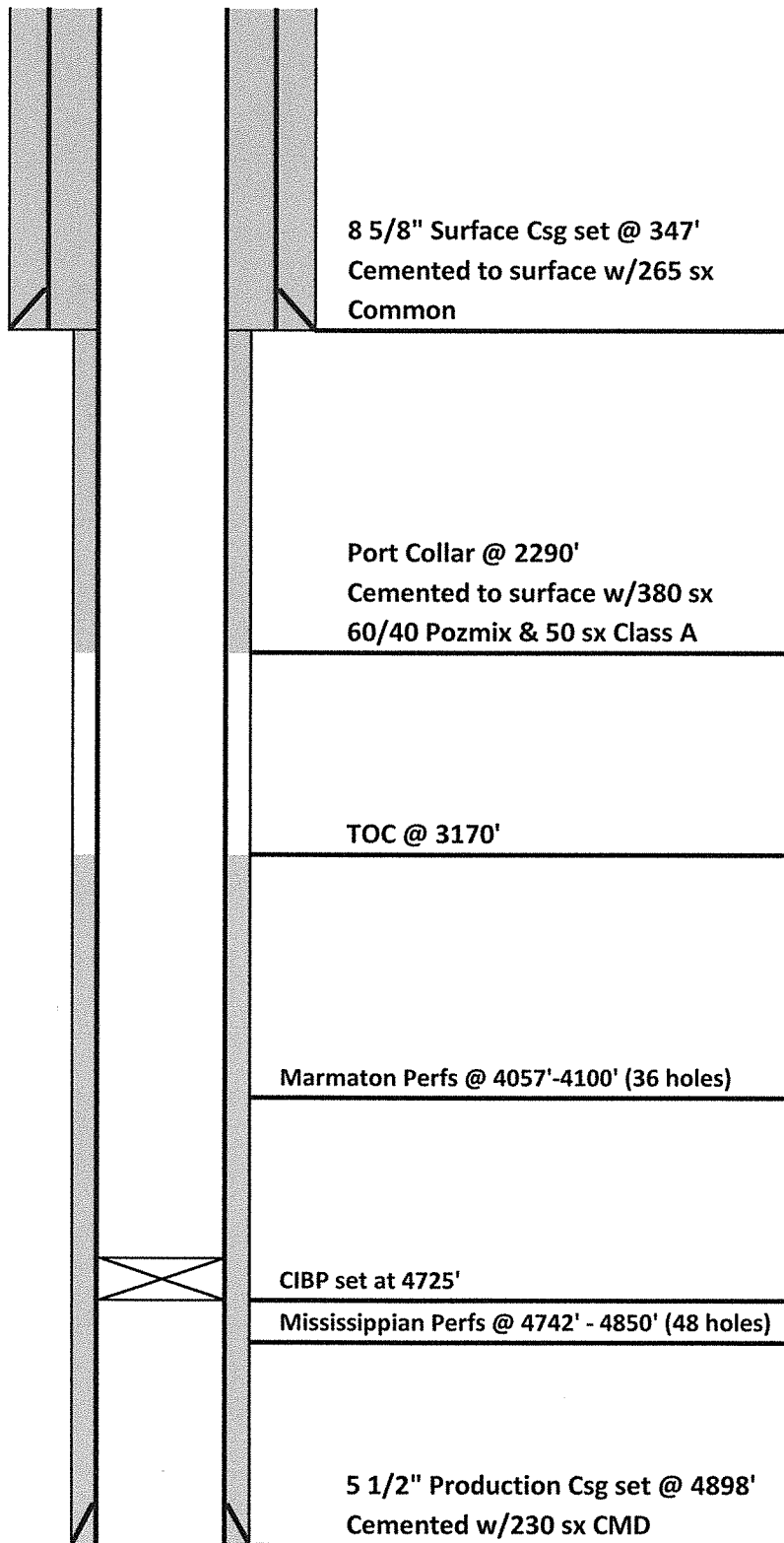




DRILLING COMPANY, INC. **WICHITA, KANSAS**

Current Wellbore Diagram



Date: 9/4/2014
 Well Name: Jettie #1-34
 Location: 658' FNL & 1621' FWL
 NE/4 NW/4 34-18S-45W
 County: Kiowa
 State: Colorado
 API: 05-061-06852-00
 Spud Date: 5/3/2011

Hole Size 12 1/4"
 Surface Casing: Set @ 347' (8 5/8")
 Cemented with: 265 sx Common
 Production Csg: Set @ 4898' (5 1/2")
 Cemented with: 230 sx CMD

Log Tops:

Anhydrite	2268
B/Anhydrite	2302
Shawnee	3400
Heebner Shale	3602
Lansing	3626
Hushpuckny	3942
B/KC	3974
Marmaton	4012
Fort Scott	4094
Cherokee Shale	4150
Atoka	4284
Morrow Shale	4418
Upper Morrow Sand	4420
Keyes	4566
Miss/St. Gen	4594
Spergen X Marker	4748
Warsaw Lime	4794
Lower Warsaw Poro	4844
Harrison Shale	4854
Osage	4858
RTD	4907
LTD	4896