

WELL LOCATION FOR AUGUSTUS ENERGY RESOURCES LLC

FRANSON 42-33 4N47W
R 47 W

NOTES

BEARINGS SHOWN HEREON ARE
BASED UPON RTK GPS
OBSERVATIONS

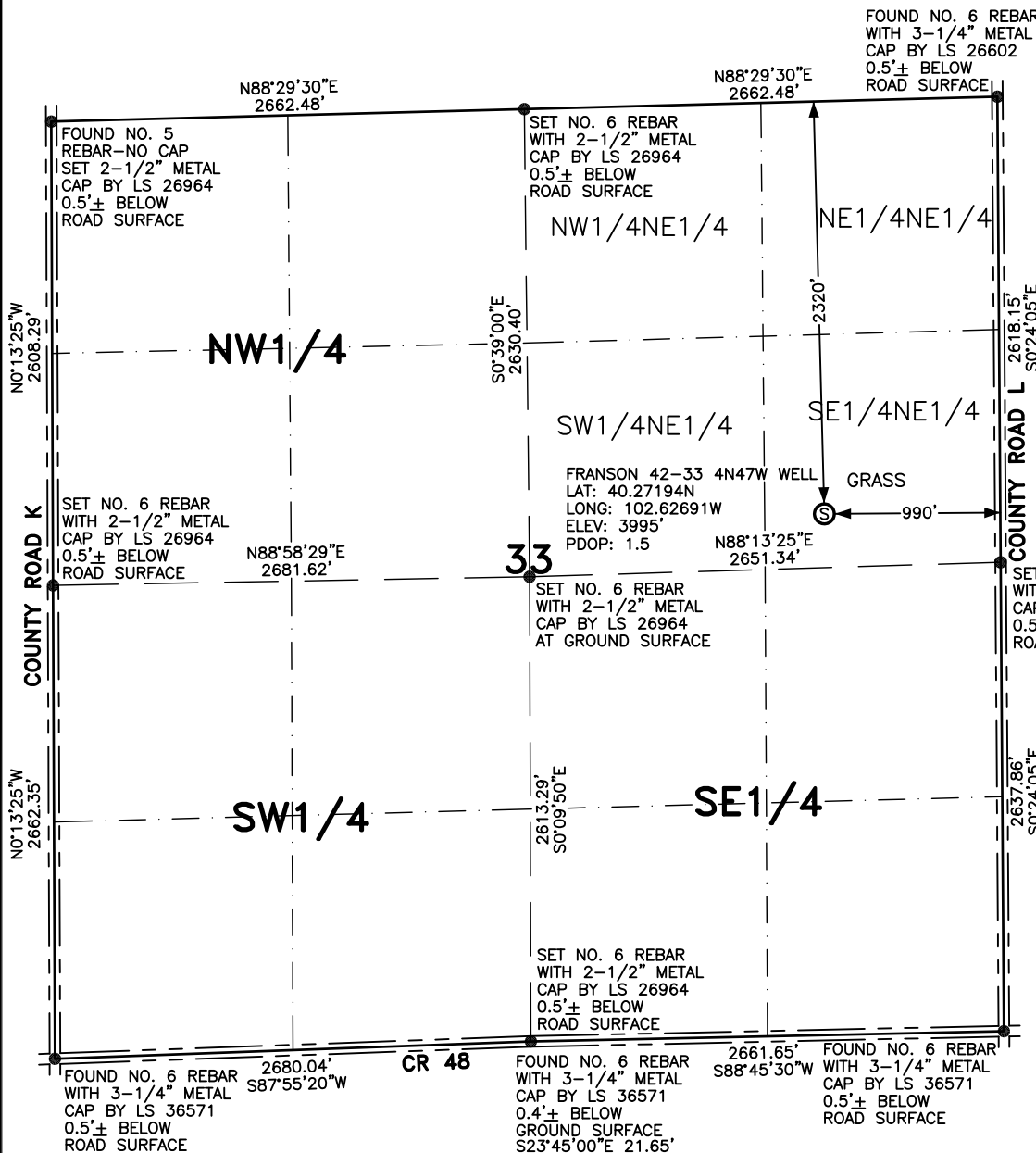
SEE LOCATION DRAWING FOR
IMPROVEMENTS WITHIN 700' OF
LOCATION.

USGS QUAD MAP:
CLARKVILLE SW, COLO.

LAT/LONG VALUES ARE NAD83

ELEVATIONS BASED UPON NGS
OPUS SOLUTION NAVD 88 DATUM

ALL DISTANCES TO SECTION LINES
ARE MEASURED PERPENDICULAR
TO AND ARE AT RIGHT ANGLES
TO SAID SECTION LINES.



T
4
N

LEGEND

⊙ FIELD SURVEYED
WELL LOCATION

== == == ROAD

-x-x- FENCE



SCALE: 1" = 1000'



SCALE IN FEET

THIS WELL LOCATION PLAT HAS BEEN PREPARED FOR AUGUSTUS ENERGY RESOURCES LLC
TO LOCATE THE FRANSON 42-33 4N47W WELL BEING 990 FEET FROM THE EAST LINE AND
2320 FEET FROM THE NORTH LINE IN THE SE1/4NE1/4 OF SECTION 33,
TOWNSHIP 4 NORTH, RANGE 47 WEST OF THE 6TH P.M., YUMA COUNTY, COLORADO.
THE SURFACE ELEVATION AT THIS POINT IS 3995 FEET.
THIS IS NOT A LAND SURVEY PLAT.



LEIBERT-McATEE & ASSOCIATES, INC.

P.O. BOX 442 615 SOUTH TENTH AVENUE
STERLING, CO 80751 970-522-1960

FIELD DATE: 6-24-14	DWG DATE: 6-25-14	GPS OPERATOR: DARREN VEAL
FRANSON 42-33 4N47W	DWG NO. 844-14	SHEET 1 OF 1