

# MENDELL ENERGY, LLC

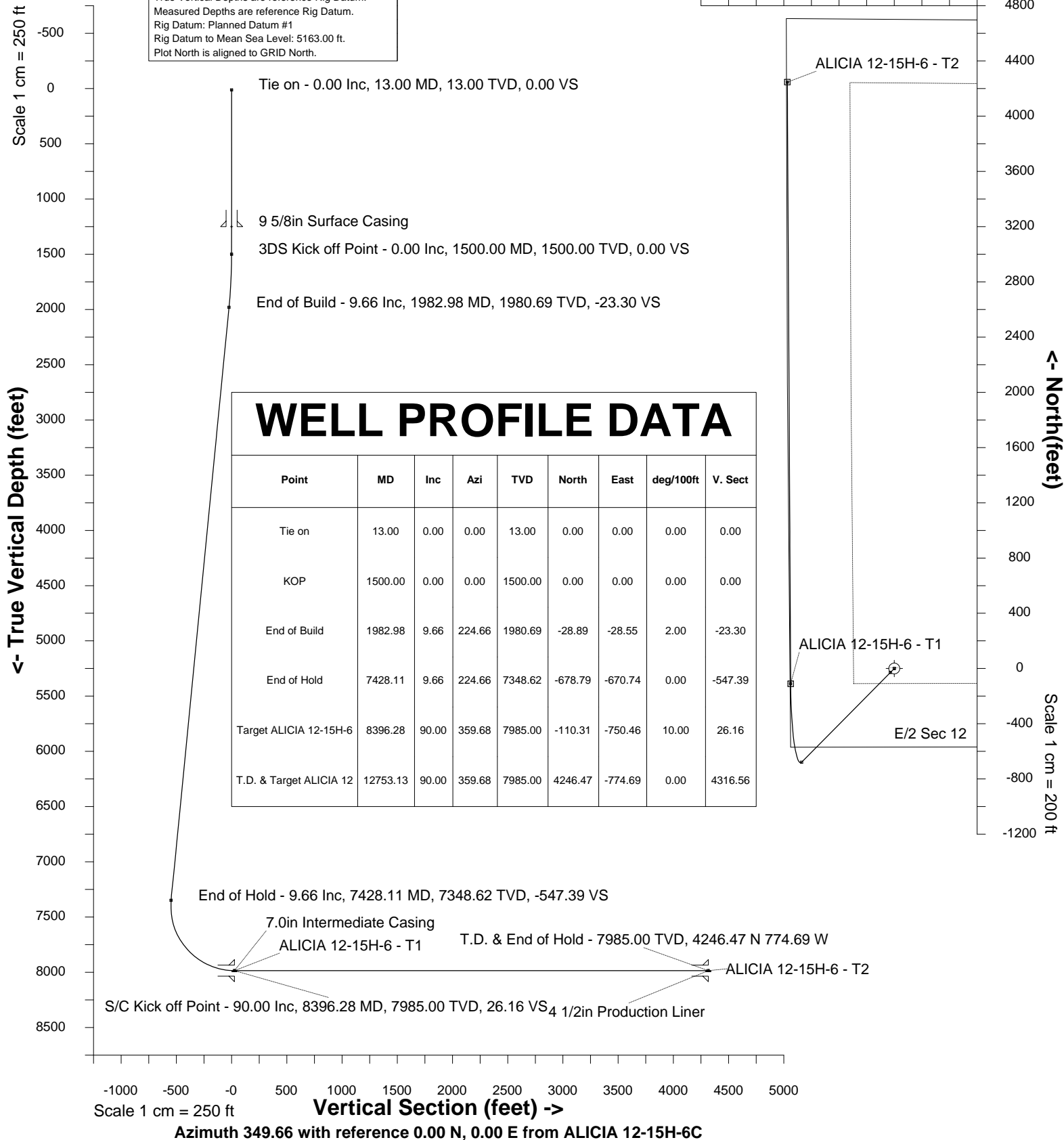
Location ADAMS COUNTY, CO Slot ALICIA 12-15H-6C  
Field SPINDLE Well ALICIA 12-15H-6C  
Installation ALICIA Wellbore ALICIA 12-15H-6C (PWB)



East (feet) ->

Scale 1 cm = 200 ft

Created by admin  
Date plotted 19-Aug-2014  
Plot reference is ALICIA 12-15H-6C (PWB).  
Ref wellpath is ALICIA 12-15H-6C (PWP#1).  
Coordinates are in feet reference ALICIA 12-15H-6C.  
True Vertical Depths are reference Rig Datum.  
Measured Depths are reference Rig Datum.  
Rig Datum: Planned Datum #1  
Rig Datum to Mean Sea Level: 5163.00 ft.  
Plot North is aligned to GRID North.





INTEGRATED PETROLEUM TECHNOLOGIES, INC  
SYSDRILL  
Well Design Combined Report  
Wellbore: ALICIA 12-15H-6C (PWB)

Wellhead Details							
Name	Northing	Easting	Latitude	Longitude	North	East	Elevation Above Inst.
ALICIA 12-15H-6C	1233687.4952	3154939.2222	39.97353000	-104.94716000	7.37S	13.97W	-0.00

Declination			
Date	Source	Time	
8-Jul-2013	IGRF Model [1900.0-2015.0]	09:34	

Site Details				
Name	Northing	Easting	Coord System Name	North Alignment
ALICIA	1233694.8679	3154953.1896	CO83-NF on NORTH AMERICAN DATUM 1983 datum	Grid

Summary Wellpath									
MD[ft]	Inc[deg]	Azi[deg]	TVD[ft]	North[ft]	East[ft]	Dogleg [deg/100ft]	Vertical Section[ft]	Northing	Easting
13.00	0.00	0.000	13.00	0.00N	0.00E		0.00	1233687.50	3154939.22
1500.00	0.00	0.000	1500.00	0.00N	0.00E	==>	0.00	1233687.50	3154939.22
1982.98	9.66	224.660	1980.69	28.89S	28.55W	2.00	-23.30	1233658.61	3154910.67
7428.11	9.66	224.660	7348.62	678.79S	670.74W	==>	-547.39	1233008.73	3154268.51
8396.28	90.00	359.680	7985.00	110.31S	750.46W	10.00	26.16	1233577.19	3154188.79
12753.13	90.00	359.680	7985.00	4246.47N	774.69W	==>	4316.56	1237933.83	3154164.56

Interpolated Wellpath									
MD[ft]	Inc[deg]	Azi[deg]	TVD[ft]	North[ft]	East[ft]	Dogleg [deg/100ft]	Vertical Section[ft]	Northing	Easting
0.00	0.00	0.000	0.00	0.00N	0.00E		0.00	1233687.50	3154939.22
13.00	0.00	0.000	13.00	0.00N	0.00E	==>	0.00	1233687.50	3154939.22
100.00	0.00	0.000	100.00	0.00N	0.00E	==>	0.00	1233687.50	3154939.22
200.00	0.00	0.000	200.00	0.00N	0.00E	==>	0.00	1233687.50	3154939.22
300.00	0.00	0.000	300.00	0.00N	0.00E	==>	0.00	1233687.50	3154939.22
400.00	0.00	0.000	400.00	0.00N	0.00E	==>	0.00	1233687.50	3154939.22
500.00	0.00	0.000	500.00	0.00N	0.00E	==>	0.00	1233687.50	3154939.22
600.00	0.00	0.000	600.00	0.00N	0.00E	==>	0.00	1233687.50	3154939.22
700.00	0.00	0.000	700.00	0.00N	0.00E	==>	0.00	1233687.50	3154939.22
800.00	0.00	0.000	800.00	0.00N	0.00E	==>	0.00	1233687.50	3154939.22
900.00	0.00	0.000	900.00	0.00N	0.00E	==>	0.00	1233687.50	3154939.22
1000.00	0.00	0.000	1000.00	0.00N	0.00E	==>	0.00	1233687.50	3154939.22
1100.00	0.00	0.000	1100.00	0.00N	0.00E	==>	0.00	1233687.50	3154939.22
1200.00	0.00	0.000	1200.00	0.00N	0.00E	==>	0.00	1233687.50	3154939.22
1300.00	0.00	0.000	1300.00	0.00N	0.00E	==>	0.00	1233687.50	3154939.22
1400.00	0.00	0.000	1400.00	0.00N	0.00E	==>	0.00	1233687.50	3154939.22
1487.00	0.00	0.000	1487.00	0.00N	0.00E	==>	0.00	1233687.50	3154939.22
1500.00	0.00	0.000	1500.00	0.00N	0.00E	==>	0.00	1233687.50	3154939.22
1587.00	1.74	224.660	1586.99	0.94S	0.93W	2.00	-0.76	1233686.56	3154938.29
1687.00	3.74	224.660	1686.87	4.34S	4.29W	2.00	-3.50	1233683.16	3154934.93
1787.00	5.74	224.660	1786.52	10.22S	10.10W	2.00	-8.24	1233677.28	3154929.13
1887.00	7.74	224.660	1885.82	18.57S	18.35W	2.00	-14.97	1233668.93	3154920.88
1982.98	9.66	224.660	1980.69	28.89S	28.55W	2.00	-23.30	1233658.61	3154910.67
2000.00	9.66	224.660	1997.47	30.92S	30.56W	==>	-24.94	1233656.57	3154908.67
2100.00	9.66	224.660	2096.06	42.86S	42.35W	==>	-34.56	1233644.64	3154896.87
2200.00	9.66	224.660	2194.64	54.79S	54.14W	==>	-44.19	1233632.70	3154885.08
2300.00	9.66	224.660	2293.22	66.73S	65.94W	==>	-53.81	1233620.77	3154873.29
2400.00	9.66	224.660	2391.80	78.66S	77.73W	==>	-63.44	1233608.83	3154861.49
2500.00	9.66	224.660	2490.39	90.60S	89.52W	==>	-73.06	1233596.90	3154849.70
2600.00	9.66	224.660	2588.97	102.53S	101.32W	==>	-82.69	1233584.96	3154837.91
2700.00	9.66	224.660	2687.55	114.47S	113.11W	==>	-92.31	1233573.03	3154826.11
2800.00	9.66	224.660	2786.13	126.41S	124.91W	==>	-101.94	1233561.09	3154814.32
2900.00	9.66	224.660	2884.71	138.34S	136.70W	==>	-111.56	1233549.16	3154802.53
3000.00	9.66	224.660	2983.30	150.28S	148.49W	==>	-121.19	1233537.22	3154790.73
3100.00	9.66	224.660	3081.88	162.21S	160.29W	==>	-130.81	1233525.29	3154778.94
3200.00	9.66	224.660	3180.46	174.15S	172.08W	==>	-140.44	1233513.35	3154767.15
3300.00	9.66	224.660	3279.04	186.08S	183.88W	==>	-150.06	1233501.42	3154755.35
3400.00	9.66	224.660	3377.63	198.02S	195.67W	==>	-159.69	1233489.48	3154743.56

All data is in Feet unless otherwise stated  
Coordinates are from Slot MD's are from Rig and TVD's are from Rig ( Planned Datum #1 5163.0ft above Mean Sea Level )  
Vertical Section is from 0.00N 0.00E on azimuth 349.660 degrees  
Bottom hole distance is 4316.56 Feet on azimuth 349.66 degrees from Wellhead  
Calculation method uses Minimum Curvature method  
Prepared by Integrated Petroleum Technologies, Inc.  
Date Printed: 19-Aug-2014



INTEGRATED PETROLEUM TECHNOLOGIES, INC  
SYSDRILL

Well Design Combined Report  
Wellbore: ALICIA 12-15H-6C (PWB)

Interpolated Wellpath									
MD[ft]	Inc[deg]	Azi[deg]	TVD[ft]	North[ft]	East[ft]	Dogleg [deg/100ft]	Vertical Section[ft]	Northing	Easting
3500.00	9.66	224.660	3476.21	209.95S	207.46W	==>	-169.31	1233477.55	3154731.77
3600.00	9.66	224.660	3574.79	221.89S	219.26W	==>	-178.94	1233465.61	3154719.97
3700.00	9.66	224.660	3673.37	233.82S	231.05W	==>	-188.56	1233453.68	3154708.18
3800.00	9.66	224.660	3771.95	245.76S	242.84W	==>	-198.19	1233441.74	3154696.39
3900.00	9.66	224.660	3870.54	257.69S	254.64W	==>	-207.81	1233429.81	3154684.59
4000.00	9.66	224.660	3969.12	269.63S	266.43W	==>	-217.44	1233417.88	3154672.80
4100.00	9.66	224.660	4067.70	281.56S	278.23W	==>	-227.06	1233405.94	3154661.01
4200.00	9.66	224.660	4166.28	293.50S	290.02W	==>	-236.69	1233394.01	3154649.21
4300.00	9.66	224.660	4264.87	305.44S	301.81W	==>	-246.31	1233382.07	3154637.42
4400.00	9.66	224.660	4363.45	317.37S	313.61W	==>	-255.93	1233370.14	3154625.63
4500.00	9.66	224.660	4462.03	329.31S	325.40W	==>	-265.56	1233358.20	3154613.83
4600.00	9.66	224.660	4560.61	341.24S	337.19W	==>	-275.18	1233346.27	3154602.04
4700.00	9.66	224.660	4659.19	353.18S	348.99W	==>	-284.81	1233334.33	3154590.25
4800.00	9.66	224.660	4757.78	365.11S	360.78W	==>	-294.43	1233322.40	3154578.45
4900.00	9.66	224.660	4856.36	377.05S	372.58W	==>	-304.06	1233310.46	3154566.66
5000.00	9.66	224.660	4954.94	388.98S	384.37W	==>	-313.68	1233298.53	3154554.87
5100.00	9.66	224.660	5053.52	400.92S	396.16W	==>	-323.31	1233286.59	3154543.07
5200.00	9.66	224.660	5152.11	412.85S	407.96W	==>	-332.93	1233274.66	3154531.28
5300.00	9.66	224.660	5250.69	424.79S	419.75W	==>	-342.56	1233262.72	3154519.48
5400.00	9.66	224.660	5349.27	436.72S	431.55W	==>	-352.18	1233250.79	3154507.69
5500.00	9.66	224.660	5447.85	448.66S	443.34W	==>	-361.81	1233238.85	3154495.90
5600.00	9.66	224.660	5546.43	460.59S	455.13W	==>	-371.43	1233226.92	3154484.10
5700.00	9.66	224.660	5645.02	472.53S	466.93W	==>	-381.06	1233214.98	3154472.31
5800.00	9.66	224.660	5743.60	484.47S	478.72W	==>	-390.68	1233203.05	3154460.52
5900.00	9.66	224.660	5842.18	496.40S	490.51W	==>	-400.31	1233191.11	3154448.72
6000.00	9.66	224.660	5940.76	508.34S	502.31W	==>	-409.93	1233179.18	3154436.93
6100.00	9.66	224.660	6039.35	520.27S	514.10W	==>	-419.56	1233167.24	3154425.14
6200.00	9.66	224.660	6137.93	532.21S	525.90W	==>	-429.18	1233155.31	3154413.34
6300.00	9.66	224.660	6236.51	544.14S	537.69W	==>	-438.81	1233143.37	3154401.55
6400.00	9.66	224.660	6335.09	556.08S	549.48W	==>	-448.43	1233131.44	3154389.76
6500.00	9.66	224.660	6433.67	568.01S	561.28W	==>	-458.06	1233119.50	3154377.96
6600.00	9.66	224.660	6532.26	579.95S	573.07W	==>	-467.68	1233107.57	3154366.17
6700.00	9.66	224.660	6630.84	591.88S	584.86W	==>	-477.31	1233095.63	3154354.38
6800.00	9.66	224.660	6729.42	603.82S	596.66W	==>	-486.93	1233083.70	3154342.58
6900.00	9.66	224.660	6828.00	615.75S	608.45W	==>	-496.56	1233071.76	3154330.79
7000.00	9.66	224.660	6926.59	627.69S	620.25W	==>	-506.18	1233059.83	3154319.00
7100.00	9.66	224.660	7025.17	639.62S	632.04W	==>	-515.81	1233047.89	3154307.20
7200.00	9.66	224.660	7123.75	651.56S	643.83W	==>	-525.43	1233035.96	3154295.41
7300.00	9.66	224.660	7222.33	663.49S	655.63W	==>	-535.06	1233024.02	3154283.62
7400.00	9.66	224.660	7320.91	675.43S	667.42W	==>	-544.68	1233012.09	3154271.82
7428.11	9.66	224.660	7348.62	678.79S	670.74W	==>	-547.39	1233008.73	3154268.51
7500.00	6.87	272.800	7419.84	682.87S	679.28W	10.00	-549.87	1233004.65	3154259.96
7600.00	12.41	326.550	7518.56	673.59S	691.21W	10.00	-538.60	1233013.93	3154248.04
7700.00	21.45	341.850	7614.17	647.18S	702.86W	10.00	-510.53	1233040.34	3154236.39
7800.00	31.07	348.160	7703.77	604.44S	713.88W	10.00	-466.51	1233083.08	3154225.37
7900.00	40.85	351.680	7784.62	546.68S	723.92W	10.00	-407.88	1233140.83	3154215.32
8000.00	50.71	354.030	7854.28	475.65S	732.70W	10.00	-336.43	1233211.86	3154206.55
8100.00	60.61	355.800	7910.63	393.51S	739.94W	10.00	-254.32	1233294.00	3154199.31
8200.00	70.52	357.240	7951.95	302.75S	745.41W	10.00	-164.05	1233384.76	3154193.84
8300.00	80.44	358.520	7976.99	206.13S	748.96W	10.00	-68.37	1233481.37	3154190.29
8396.28	90.00	359.680	7985.00	110.31S	750.46W	10.00	26.16	1233577.19	3154188.79
8400.00	90.00	359.680	7985.00	106.59S	750.48W	==>	29.83	1233580.91	3154188.77
8500.00	90.00	359.680	7985.00	6.59S	751.04W	==>	128.30	1233680.91	3154188.21
8600.00	90.00	359.680	7985.00	93.41N	751.59W	==>	226.78	1233780.90	3154187.66
8700.00	90.00	359.680	7985.00	193.41N	752.15W	==>	325.25	1233880.90	3154187.10
8800.00	90.00	359.680	7985.00	293.41N	752.70W	==>	423.73	1233980.89	3154186.54
8900.00	90.00	359.680	7985.00	393.40N	753.26W	==>	522.20	1234080.89	3154185.99
9000.00	90.00	359.680	7985.00	493.40N	753.82W	==>	620.68	1234180.88	3154185.43
9100.00	90.00	359.680	7985.00	593.40N	754.37W	==>	719.15	1234280.88	3154184.88
9200.00	90.00	359.680	7985.00	693.40N	754.93W	==>	817.63	1234380.87	3154184.32
9300.00	90.00	359.680	7985.00	793.40N	755.48W	==>	916.10	1234480.87	3154183.76

All data is in Feet unless otherwise stated  
Coordinates are from Slot MD's are from Rig and TVD's are from Rig ( Planned Datum #1 5163.0ft above Mean Sea Level )  
Vertical Section is from 0.00N 0.00E on azimuth 349.660 degrees  
Bottom hole distance is 4316.56 Feet on azimuth 349.66 degrees from Wellhead  
Calculation method uses Minimum Curvature method  
Prepared by Integrated Petroleum Technologies, Inc.  
Date Printed: 19-Aug-2014



INTEGRATED PETROLEUM TECHNOLOGIES, INC  
SYSDRILL

Well Design Combined Report  
Wellbore: ALICIA 12-15H-6C (PWB)

Interpolated Wellpath									
MD[ft]	Inc[deg]	Azi[deg]	TVD[ft]	North[ft]	East[ft]	Dogleg [deg/100ft] ==>	Vertical Section[ft] 1014.58	Northing	Easting
9400.00	90.00	359.680	7985.00	893.40N	756.04W			1234580.86	3154183.21
9500.00	90.00	359.680	7985.00	993.39N	756.60W	==>	1113.05	1234680.86	3154182.65
9600.00	90.00	359.680	7985.00	1093.39N	757.15W	==>	1211.53	1234780.85	3154182.10
9700.00	90.00	359.680	7985.00	1193.39N	757.71W	==>	1310.00	1234880.85	3154181.54
9800.00	90.00	359.680	7985.00	1293.39N	758.26W	==>	1408.47	1234980.84	3154180.98
9900.00	90.00	359.680	7985.00	1393.39N	758.82W	==>	1506.95	1235080.84	3154180.43
10000.00	90.00	359.680	7985.00	1493.39N	759.38W	==>	1605.42	1235180.83	3154179.87
10100.00	90.00	359.680	7985.00	1593.39N	759.93W	==>	1703.90	1235280.83	3154179.31
10200.00	90.00	359.680	7985.00	1693.38N	760.49W	==>	1802.37	1235380.82	3154178.76
10300.00	90.00	359.680	7985.00	1793.38N	761.04W	==>	1900.85	1235480.82	3154178.20
10400.00	90.00	359.680	7985.00	1893.38N	761.60W	==>	1999.32	1235580.81	3154177.65
10500.00	90.00	359.680	7985.00	1993.38N	762.16W	==>	2097.80	1235680.81	3154177.09
10600.00	90.00	359.680	7985.00	2093.38N	762.71W	==>	2196.27	1235780.80	3154176.53
10700.00	90.00	359.680	7985.00	2193.38N	763.27W	==>	2294.75	1235880.80	3154175.98
10800.00	90.00	359.680	7985.00	2293.37N	763.83W	==>	2393.22	1235980.79	3154175.42
10900.00	90.00	359.680	7985.00	2393.37N	764.38W	==>	2491.70	1236080.79	3154174.87
11000.00	90.00	359.680	7985.00	2493.37N	764.94W	==>	2590.17	1236180.78	3154174.31
11100.00	90.00	359.680	7985.00	2593.37N	765.49W	==>	2688.65	1236280.78	3154173.75
11200.00	90.00	359.680	7985.00	2693.37N	766.05W	==>	2787.12	1236380.77	3154173.20
11300.00	90.00	359.680	7985.00	2793.37N	766.61W	==>	2885.59	1236480.77	3154172.64
11400.00	90.00	359.680	7985.00	2893.37N	767.16W	==>	2984.07	1236580.76	3154172.09
11500.00	90.00	359.680	7985.00	2993.36N	767.72W	==>	3082.54	1236680.76	3154171.53
11600.00	90.00	359.680	7985.00	3093.36N	768.27W	==>	3181.02	1236780.75	3154170.97
11700.00	90.00	359.680	7985.00	3193.36N	768.83W	==>	3279.49	1236880.75	3154170.42
11800.00	90.00	359.680	7985.00	3293.36N	769.39W	==>	3377.97	1236980.74	3154169.86
11900.00	90.00	359.680	7985.00	3393.36N	769.94W	==>	3476.44	1237080.74	3154169.31
12000.00	90.00	359.680	7985.00	3493.36N	770.50W	==>	3574.92	1237180.73	3154168.75
12100.00	90.00	359.680	7985.00	3593.35N	771.05W	==>	3673.39	1237280.73	3154168.19
12200.00	90.00	359.680	7985.00	3693.35N	771.61W	==>	3771.87	1237380.72	3154167.64
12300.00	90.00	359.680	7985.00	3793.35N	772.17W	==>	3870.34	1237480.72	3154167.08
12400.00	90.00	359.680	7985.00	3893.35N	772.72W	==>	3968.82	1237580.71	3154166.53
12500.00	90.00	359.680	7985.00	3993.35N	773.28W	==>	4067.29	1237680.71	3154165.97
12600.00	90.00	359.680	7985.00	4093.35N	773.84W	==>	4165.76	1237780.70	3154165.41
12700.00	90.00	359.680	7985.00	4193.35N	774.39W	==>	4264.24	1237880.70	3154164.86
12753.13	90.00	359.680	7985.00	4246.47N	774.69W	==>	4316.56	1237933.83	3154164.56

All data is in Feet unless otherwise stated  
Coordinates are from Slot MD's are from Rig and TVD's are from Rig ( Planned Datum #1 5163.0ft above Mean Sea Level )  
Vertical Section is from 0.00N 0.00E on azimuth 349.660 degrees  
Bottom hole distance is 4316.56 Feet on azimuth 349.66 degrees from Wellhead  
Calculation method uses Minimum Curvature method  
Prepared by Integrated Petroleum Technologies, Inc.  
Date Printed: 19-Aug-2014



INTEGRATED PETROLEUM TECHNOLOGIES, INC  
SYSDRILL  
Well Design Combined Report  
Wellbore: ALICIA 12-15H-6C (PWB)

Hole Sections								
Diameter [in]	Start MD[ft]	Start TVD[ft]	Start North[ft]	Start East[ft]	End MD[ft]	End TVD[ft]	End North[ft]	End East[ft]
13 1/2	13.00	13.00	0.00N	0.00E	1250.00	1250.00	0.00N	0.00E
8 3/4	1250.00	1250.00	0.00N	0.00E	8396.00	7985.00	110.59S	750.46W
6 1/8	8396.00	7985.00	110.59S	750.46W	12753.13	7985.00	4246.47N	774.69W

Casings								
Name	Top MD[ft]	Top TVD[ft]	Top North[ft]	Top East[ft]	Shoe MD[ft]	Shoe TVD[ft]	Shoe North[ft]	Shoe East[ft]
9 5/8in Surface Casing	13.00	13.00	0.00N	0.00E	1250.00	1250.00	0.00N	0.00E
7.0in Intermediate Casing	13.00	13.00	0.00N	0.00E	8396.00	7985.00	110.59S	750.46W
4 1/2in Production Liner	8196.00	7950.60	306.51S	745.23W	12753.13	7985.00	4246.47N	774.69W

Targets								
Name	North[ft]	East[ft]	TVD[ft]	Latitude	Longitude	Northing	Easting	Last Revised
ALICIA 12-15H-6 - T1	110.31S	750.46W	7985.00	39.97324000	-104.94984000	1233577.19	3154188.79	3-Mar-2014
ALICIA 12-15H-6 - T2	4246.47N	774.69W	7985.00	39.98520000	-104.94983000	1237933.83	3154164.56	3-Mar-2014

Survey Tool Program					
Reference	Survey Name	MD[ft]	TVD[ft]	Survey Tool	Error Model
172724	Planned	12753.13	7985.00	WdW Rate Gyro	Standard

Notes

All data is in Feet unless otherwise stated  
Coordinates are from Slot MD's are from Rig and TVD's are from Rig ( Planned Datum #1 5163.0ft above Mean Sea Level )  
Vertical Section is from 0.00N 0.00E on azimuth 349.660 degrees  
Bottom hole distance is 4316.56 Feet on azimuth 349.66 degrees from Wellhead  
Calculation method uses Minimum Curvature method  
Prepared by Integrated Petroleum Technologies, Inc.  
Date Printed: 19-Aug-2014



SYSDRILL  
Closest Approach + Clearance Factor Summary Report  
Wellbore: ALICIA 12-15H-6C (PWB)

Ellipse separations are reported ONLY if BOTH wells have uncertainty data  
Only Depth and Magnetic Reference Field error terms are correlated across tie points  
Proximities beyond 2500.00ft with expansion rate of 0.00ft/1000ft are not reported  
Scan limit is calculated on CENTRE to CENTRE distance

Summary data uses Closest Approach clearance calculation for all minima  
Hole size/Casings ARE included  
Hole size/Casings are NOT subtracted from Centre-Centre distance  
Confidence limit of 95.00% / 2.80 SD.

Wellbore		
Name	Created	Last Revised
ALICIA 12-15H-6C (PWB)	3-Mar-2014	19-Aug-2014

Well		
Name	Government ID	Last Revised
ALICIA 12-15H-6C		19-Aug-2014

Slot						
Name	Grid Northing	Grid Easting	Latitude	Longitude	North	East
ALICIA 12-15H-6C	1233687.4952	3154939.2222	39.97353000	-104.94716000	7.37S	13.97W

Installation				
Name	Easting	Northing	Coord System Name	North Alignment
ALICIA	3154953.1896	1233694.8679	CO83-NF on NORTH AMERICAN DATUM 1983 datum	Grid

Field				
Name	Easting	Northing	Coord System Name	North Alignment
SPINDLE	3156324.1590	1233718.6871	CO83-NF on NORTH AMERICAN DATUM 1983 datum	Grid

Clearance Summary										
Offset WellName	Offset Wellbore	Offset Slot	Offset Structure	Separation [ft]	MD[ft]	Diverging From[ft]	Ellipse Separation [ft]	Ellipse MD[ft]	Clearance Factor	Clearance MD[ft]
ALICIA 12-15H-1N	ALICIA 12-15H-1N (PWB)	ALICIA 12-15H-1N	ALICIA	15.79	1500.00	8386.36	12.74	1505.78	3.94	12753.13
ALICIA 12-15H-5N	ALICIA 12-15H-5N (PWB)	ALICIA 12-15H-5N	ALICIA	31.59	1500.00	12753.13	28.53	1505.78	6.96	12753.13
ALICIA 12-15H-2N	ALICIA 12-15H-2N (PWB)	ALICIA 12-15H-2N	ALICIA	45.82	1500.00	12753.13	42.76	1505.78	10.95	12753.13
ALICIA 12-15H-4C	ALICIA 12-15H-4C (PWB)	ALICIA 12-15H-4C	ALICIA	61.58	1500.00	12739.28	58.53	1505.78	13.98	12753.13
Ruby #1	Ruby #1 (AWB)	Ruby #1	Offsets	68.90	1500.00	8546.16	64.13	1505.78	14.28	1571.40
ALICIA 12-15H-3N	ALICIA 12-15H-3N (PWB)	ALICIA 12-15H-3N	ALICIA	77.36	1500.00	12753.13	74.30	1505.78	15.10	12753.13
Ruby #2	Ruby #2 (AWB)	Ruby #2	Offsets	87.33	1218.00	9906.40	84.43	1218.00	23.53	9888.33
MALLO #1	MALLO #1 (AWB)	MALLO #1	Offsets	134.40	1500.00	1500.00	130.32	1505.78	32.04	1637.02
TUDEX REINHOLT #NC4	TUDEX REINHOLT #NC4 (AWB)	TUDEX REINHOLT #NC4	Offsets	747.12	12277.14	12277.14	705.32	12277.14	17.87	12277.14
DARLOW UNIT #12-16B	DARLOW UNIT #12-16B	DARLOW UNIT #12-16B	Offsets	1184.93	1500.00	8595.40	1180.17	1505.78	129.35	9346.99

All data is in Feet unless otherwise stated  
Coordinates are from Slot MD's are from Rig and TVD's are from Rig ( Planned Datum #1 5163.0ft above Mean Sea Level )  
Vertical Section is from 0.00N 0.00E on azimuth 349.660 degrees  
Prepared by Integrated Petroleum Technologies, Inc.  
Date Printed: 19-Aug-2014



SYSDRILL  
Closest Approach + Clearance Factor Summary Report  
Wellbore: ALICIA 12-15H-6C (PWB)

Clearance Summary										
Offset WellName	Offset Wellbore	Offset Slot	Offset Structure	Separation [ft]	MD[ft]	Diverging From[ft]	Ellipse Separation [ft]	Ellipse MD[ft]	Clearance Factor	Clearance MD[ft]
(AWB)										
W MORRISO N 24-1 #3	W MORRISON 24-1 #3 (AWB)	MORRISO N 24-1 #3	Offsets	1275.29	12753.13	12753.13	1232.78	12753.13	30.00	12753.13
AFTON 12-16H-1	AFTON 12-16H-1 (PWB)	Slot #1	AFTON	1297.83	7230.85	7230.85	1280.38	7230.00	19.43	12742.66
PULIS #12-8	PULIS #12-8 (AWB)	PULIS #12-8	Offsets	1312.23	1500.00	1500.00	1308.15	1505.78	180.49	5278.75
AFTON 12-16H-1	AFTON 12-16H-1 (REV 1)	Slot #1	AFTON	1359.32	1866.67	12753.13	1337.00	12753.13	18.05	12753.13
AFTON 12-16H-8	AFTON 12-16H-8 (PWB)	Slot #8	AFTON	1379.09	1833.87	1833.87	1375.36	1833.87	21.29	12753.13
AFTON 12-16H-2	AFTON 12-16H-2 (PWB)	Slot #2	AFTON	1380.10	1900.00	7404.05	1376.15	1915.89	20.02	12753.13
AFTON 12-16H-7	AFTON 12-16H-7 (PWB)	Slot #7	AFTON	1398.63	1817.46	1817.46	1394.94	1833.87	23.44	12753.13
AFTON #12-16H-3	AFTON #12-16H-3 (PWB)	Slot #3	AFTON	1416.39	1554.99	12725.38	1413.21	1571.40	26.38	12753.13
AFTON 12-16H-6	AFTON 12-16H-6 (PWB)	Slot #6	AFTON	1418.11	1398.00	1398.00	1415.16	1243.31	33.23	12753.13
BELLINGER R #12-7	BELLINGER #12-7 (AWB)	BELLINGER R #12-7	Offsets	1419.03	1500.00	1500.00	1414.93	1505.78	192.05	5245.94
AFTON #12-16H-4	AFTON #12-16H-4 Sidetrack	Slot #4	AFTON	1419.34	1472.97	12534.93	1413.13	1505.78	15.53	12627.83
AFTON #12-16H-4	AFTON #12-16H-4 Original	Slot #4	AFTON	1419.34	1472.97	8549.23	1413.13	1505.78	56.58	9576.65
AFTON #12-16H-4	AFTON #12-16H-4 (PWB)	Slot #4	AFTON	1433.00	1341.74	1341.74	1430.00	1505.78	28.33	12753.13
AFTON #12-16H-4	AFTON #12-16H-4 Ensign Plan	Slot #4	AFTON	1433.20	1500.00	1500.00	1430.15	1505.78	28.69	12753.13
AFTON 12-16H-5	AFTON 12-16H-5 (PWB)	Slot #5	AFTON	1434.08	1347.00	1347.00	1431.13	1243.31	144.77	7280.06
W MORRISO N #15-1	W MORRISON #15-1 (AWB)	MORRISO N #15-1	Offsets	1439.42	12753.13	12753.13	1388.79	12753.13	28.43	12753.13
BARKER #12-9	BARKER #12-9 (AWB)	BARKER #12-9	Offsets	1715.86	1500.00	9883.40	1711.09	1505.78	77.68	10298.43
DARLOW #12-2	DARLOW #12-2 (AWB)	DARLOW #12-2	Offsets	1741.03	1500.00	1500.00	1736.97	1505.78	251.61	5262.34
ELMS #2	ELMS #2	ELMS #2	Offsets	1897.75	11488.53	11488.53	1862.68	11495.94	52.94	11791.22

All data is in Feet unless otherwise stated  
Coordinates are from Slot MD's are from Rig and TVD's are from Rig ( Planned Datum #1 5163.0ft above Mean Sea Level )  
Vertical Section is from 0.00N 0.00E on azimuth 349.660 degrees  
Prepared by Integrated Petroleum Technologies, Inc.  
Date Printed: 19-Aug-2014



SYSDRILL  
Closest Approach + Clearance Factor Summary Report  
Wellbore: ALICIA 12-15H-6C (PWB)

Clearance Summary										
Offset WellName	Offset Wellbore	Offset Slot	Offset Structure	Separation [ft]	MD[ft]	Diverging From[ft]	Ellipse Separation [ft]	Ellipse MD[ft]	Clearance Factor	Clearance MD[ft]
(AWB)										
W MORRISO N #16-1	W MORRISON #16-1 (AWB)	MORRISO N #16-1	Offsets	2084.55	12753.13	12753.13	2021.24	12753.13	32.92	12753.13
W MORRISO N 33-1 #4	W MORRISON 33-1 #4 (AWB)	MORRISO N 33-1 #4	Offsets	2379.24	12753.13	12753.13	2333.97	12753.13	52.57	12753.13
TUDEX BRINK #S-2	TUDEX BRINK #S-2 (AWB)	TUDEX BRINK #S-2	Offsets	2422.17	1505.78	1505.78	2419.06	1505.78	548.48	2293.18
W MORRISO N #11-1	W MORRISON #11-1 (AWB)	MORRISO N #11-1	Offsets	2470.91	12753.13	12753.13	2424.21	12753.13	52.90	12753.13