



Integrated Petroleum Technologies, Inc.

8/25/14

Colorado Oil and Gas Conservation Commission
Attn: Matt Lepore, Director
1120 Lincoln Street, Suite 801
Denver, CO 80203

RE: Waiver Request to Proposed Spacing Unit due to Bayswater Exploration & Production, LLC Waiver of Rule 318A.e.(6) and agreement to the PSU.

Alicia 12-54H-2N Well: 460' FSL, 1859' FEL, Sec. 12-T1S-R68W, Weld County, Colorado

Dear Mr. Lepore,

Mendell Finisterre II, LLC (MFI) hereby certifies that Bayswater Exploration & Production LLC has waived Rule 318A.e.(6) 30-day written objection requirement and granted that the proposed spacing unit may be established. Mendell respectfully requests that the Rule 318A.a.(4)D Horizontal wells and proposed spacing unit be approved.

Should you have any questions or concerns please contact the undersigned at 720-420-5747.

Sincerely,

Paul Gottlob
Regulatory & Engineering Technician
Integrated Petroleum Technologies, Inc.
Consultants to Mendell Finisterre II, LLC

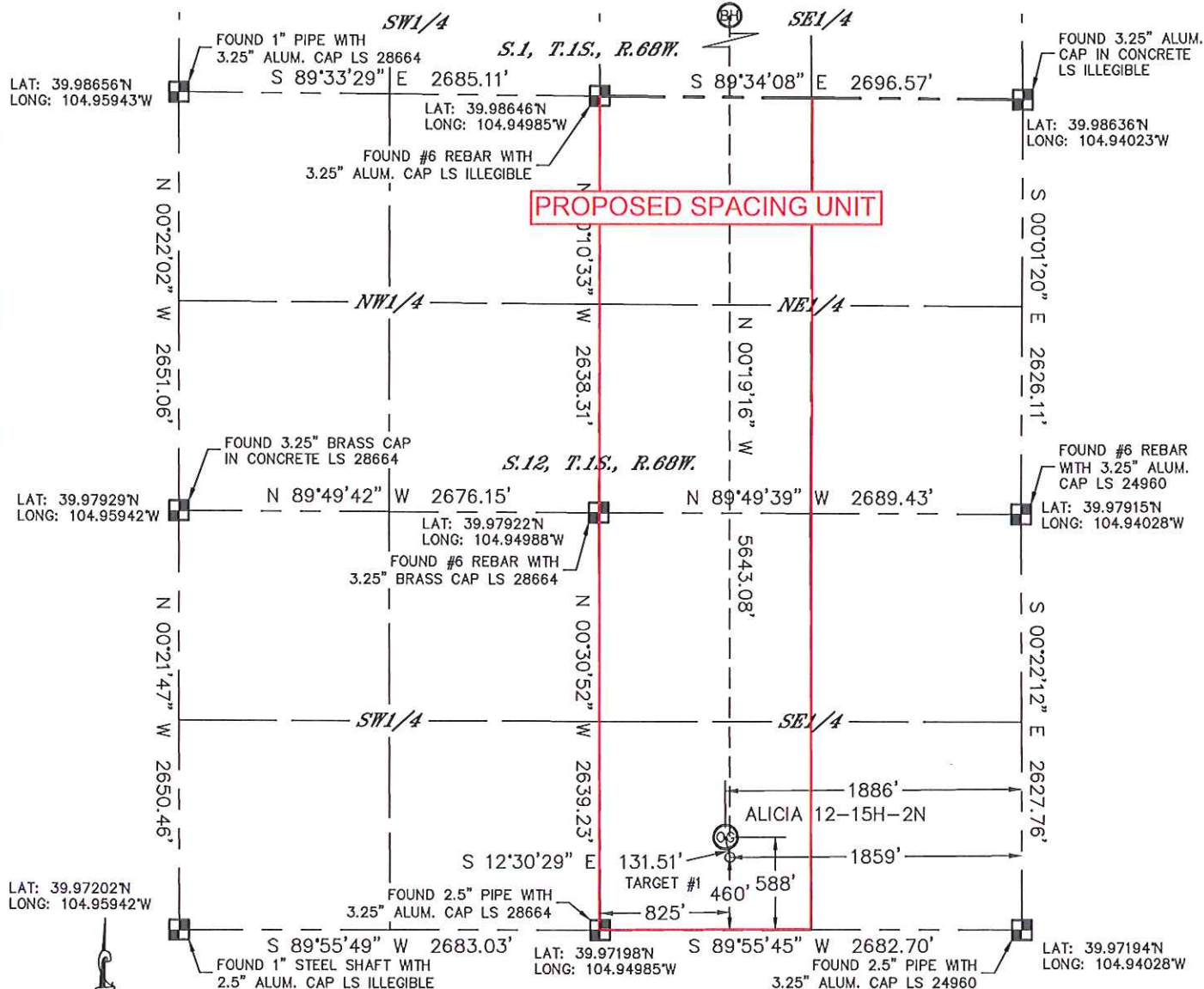


Lat40°, Inc. 1635 Foxtrail Drive, Suite 325 Loveland, CO 970-776-3321

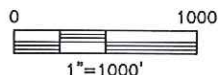
WELL LOCATION CERTIFICATE

THIS MAP DOES NOT REPRESENT A BOUNDARY SURVEY

SECTION: 12
TOWNSHIP: 1S
RANGE: 68W



LAT: 39.97202°N
LONG: 104.95942°W



NOTE:

- 1) Bearings shown are Grid Bearings of the Colorado State Plane Coordinate System, North Zone, North American Datum 1983/2007. The lineal dimensions as contained herein are based upon the "U.S. Survey Foot."
- 2) Ground elevations are based on an observed GPS elevation (NAVD 1988 DATUM).
- 3) IMPROVEMENTS: See LOCATION DRAWING for all visible improvements within 400' of disturbed area.
- 4) SURFACE USE: EX. WELL LOCATION
- 5) INSTRUMENT OPERATOR: BRIAN ROTTINGHAUS
NEAREST CULTURAL ITEMS:
BUILDING: ±665' SW
BUILDING UNIT: ±664' SE
HIGH OCCUPANCY BUILDING UNIT: ±1948' SW
DESIGNATED OUTSIDE ACTIVITY AREA: 5280'+
PUBLIC ROAD: ±606' S (MADISON CT.)
ABOVEGROUND UTILITY: ±1171' SE
RAILROAD: ±267' NW
PROPERTY LINE: ±192' NW

In accordance with a request from Clay Duke with MENDELL FINISTERRE II, LLC Lat40°, Inc. has determined the surface location of the ALICIA 12-15H-2N to be 588' from the SOUTH line and 1886' from the EAST line as measured at right angles from the section lines of Section 12, Township 1 South, Range 68 West and the bottom hole to be 833' from the SOUTH line and 1863' from the EAST line as measured at right angles from the section lines of Section 1, Township 1 South, Range 68 West of the Sixth Principal Meridian, County of Adams, State of Colorado.

I hereby state that this Well Location Certificate was prepared by me, or under my direct supervision, that the fieldwork was completed on 8/7/2014, for and on behalf of MENDELL FINISTERRE II, LLC. That this is not a Land Survey Plat or an Improvement Survey Plat, and that it is not to be relied upon for establishment of fence, building, or other future improvement lines.

SURFACE LOCATION
LAT: 39.97358°N
LONG: 104.94701°W
PDOP: 1.5
ELEV: 5150'
1/4, 1/4: SW1/4SE1/4

TARGET #1
LAT: 39.97323°N
LONG: 104.94691°W

BOTTOM HOLE
LAT: 39.98872°N
LONG: 104.94690°W

LEGEND

- = ALIQUOT MONUMENT AS DESCRIBED
- = CALCULATED POSITION

SHEET 1 OF 2

Brian T. Brinkman—On Behalf of Lat40°, Inc.
Colorado Licensed Professional
Land Surveyor No. 38175

DATE: 8/18/2014
PROJECT#: 2013026



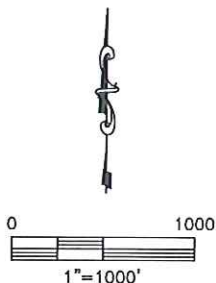
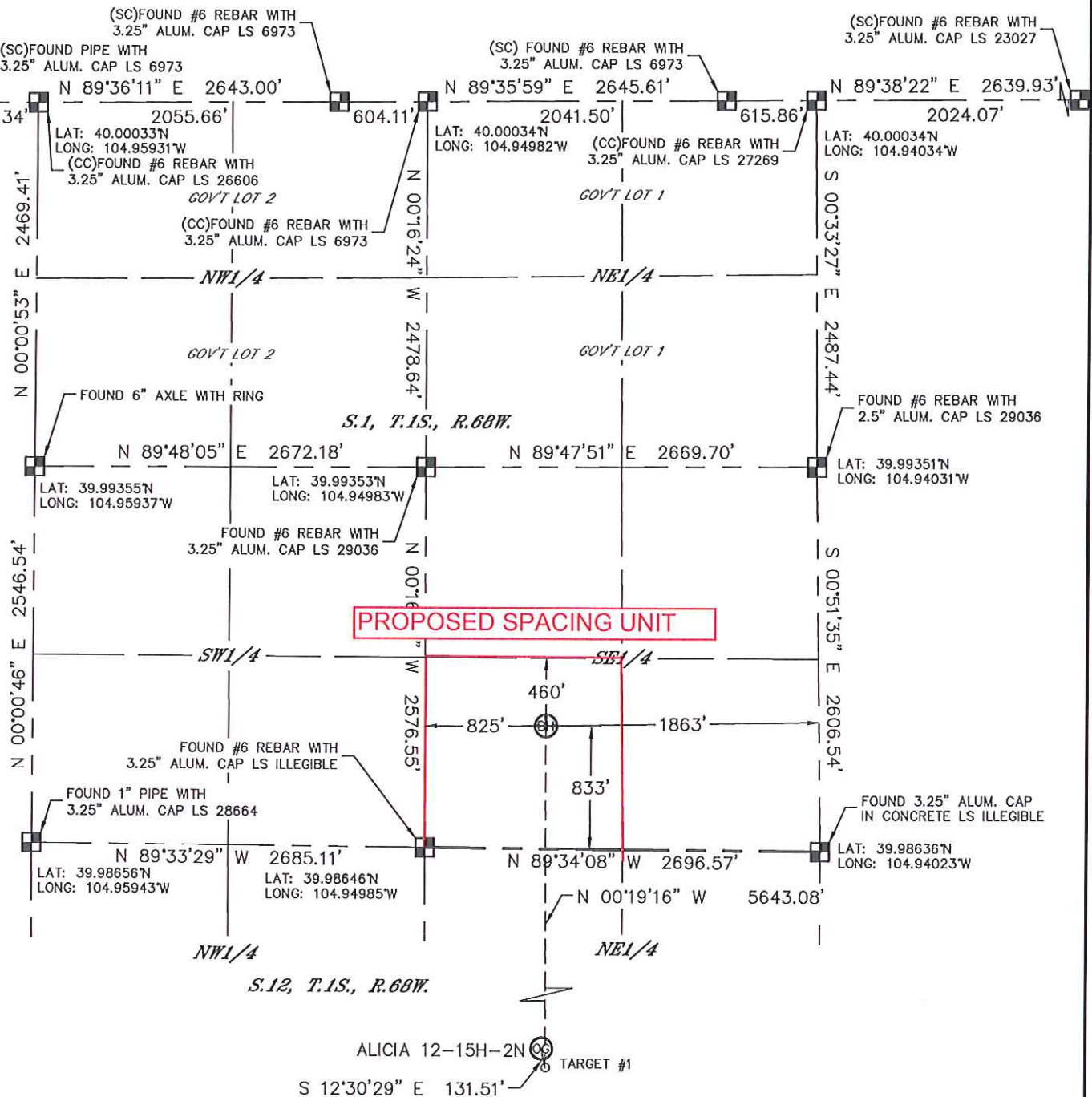


Lat40°, Inc. 1635 Foxtrail Drive, Suite 325 Loveland, CO 970-776-3321

WELL LOCATION CERTIFICATE

THIS MAP DOES NOT REPRESENT A BOUNDARY SURVEY

SECTION: 12
TOWNSHIP: 1S
RANGE: 68W



LEGEND

- = ALIQUOT MONUMENT AS DESCRIBED
- = CALCULATED POSITION

SHEET 2 OF 2

Brian T. Brinkman-On Behalf of Lat40°, Inc.
Colorado Licensed Professional
Land Surveyor No. 38175
DATE: 8/18/2014
PROJECT#: 2013026

