



Aug. 28, 2014

Mr. Matt Lepore, Director
Colorado Oil and Gas Conservation Commission
1120 Lincoln Street
Suite 801
Denver, Colorado 80203

**RE: COGCC Rule 318A.e.: Proposed Wellbore Spacing Unit
Alicia 12-15H-1N
SWSE Section 12, Township 1 South, Range 68 West
Adams County, Colorado**

Dear Mr. Lepore:

Mendell Finisterre II (MF) is planning to drill the above referenced well in accordance with the provisions set out in COGCC Rule 318A.e. MF proposed wellbore spacing unit consists of:

400 acres more or less

MF is not the only owner within the proposed wellbore spacing unit and has received a waiver from Bayswater & Anadarko regarding this spacing unit, as required by COGCC Rule 318A.e.(6). Copies of the Waivers are attached to Form 2 and labeled as Waivers.

Enclosed is the Proposed Spacing Unit Plat to assist in your review and approval of MF proposed Application for Permit to Drill (APD) for the subject well. MF respectfully requests the COGCC review the enclosed information and approve this PSU and APD.

Respectfully,

Paul Gottlob
Regulatory & Engineering Technician
Integrated Petroleum Technologies Inc
Consultants to Mendell Finisterre II

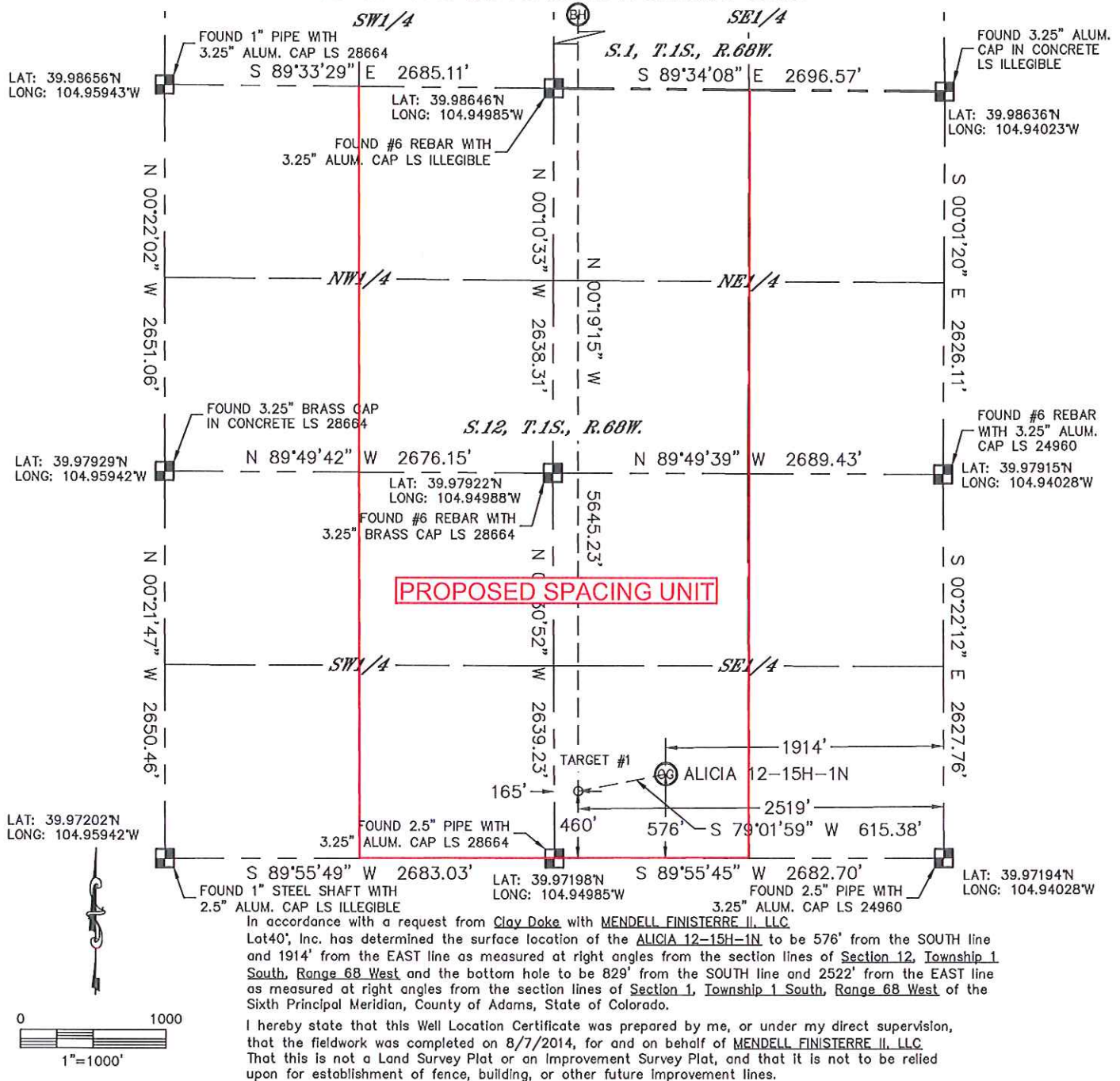
Attachment: Proposed Spacing Unit Plat

Lat40°, Inc. 1635 Foxtrail Drive, Suite 325 Loveland, CO 970-776-3321



WELL LOCATION CERTIFICATE

THIS MAP DOES NOT REPRESENT A BOUNDARY SURVEY

SECTION: 12
TOWNSHIP: 1S
RANGE: 68W



NOTE:

- 1) Bearings shown are Grid Bearings of the Colorado State Plane Coordinate System, North Zone, North American Datum 1983/2007. The lineal dimensions as contained herein are based upon the "U.S. Survey Foot."
2) Ground elevations are based on an observed GPS elevation (NAVD 1988 DATUM).
3) IMPROVEMENTS: See LOCATION DRAWING for all visible improvements within 400' of disturbed area.
4) SURFACE USE: EX. WELL LOCATION
5) INSTRUMENT OPERATOR: BRIAN ROTTINGHAUS
NEAREST CULTURAL ITEMS:
BUILDING: ±650' SW
BUILDING UNIT: ±659' SE
HIGH OCCUPANCY BUILDING UNIT: ±1918' SW
DESIGNATED OUTSIDE ACTIVITY AREA: 5280'+
PUBLIC ROAD: ±594' S (MADISON CT.)
ABOVEGROUND UTILITY: ±1197' SE
RAILROAD: ±247' NW
PROPERTY LINE: ±172' NW
- LEGEND
 = ALIQUOT MONUMENT
 = CALCULATED POSITION

SURFACE LOCATION

LAT: 39.97355°N
LONG: 104.94711°W
PDOP: 1.5
ELEV: 5150'
1/4,1/4: SW1/4SE1/4

BOTTOM HOLE



LAT: 39.98873N
LONG: 104.94925W



TARGET #1

LAT: 39.97324N
LONG: 104.94927W

LEGEND

-  = ALIQUOT MONUMENT AS DESCRIBED
 = CALCULATED POSITION

SHEET 1 OF 2

Brian T. Brinkman—On behalf of T&T40', Inc.
Colorado Licensed Professional Land Surveyor No. 38175
DATE: 8/18/2011
PROJECT#: 2011-0001

DATE: 8/18/2014
PROJECT#: 2013026

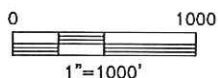
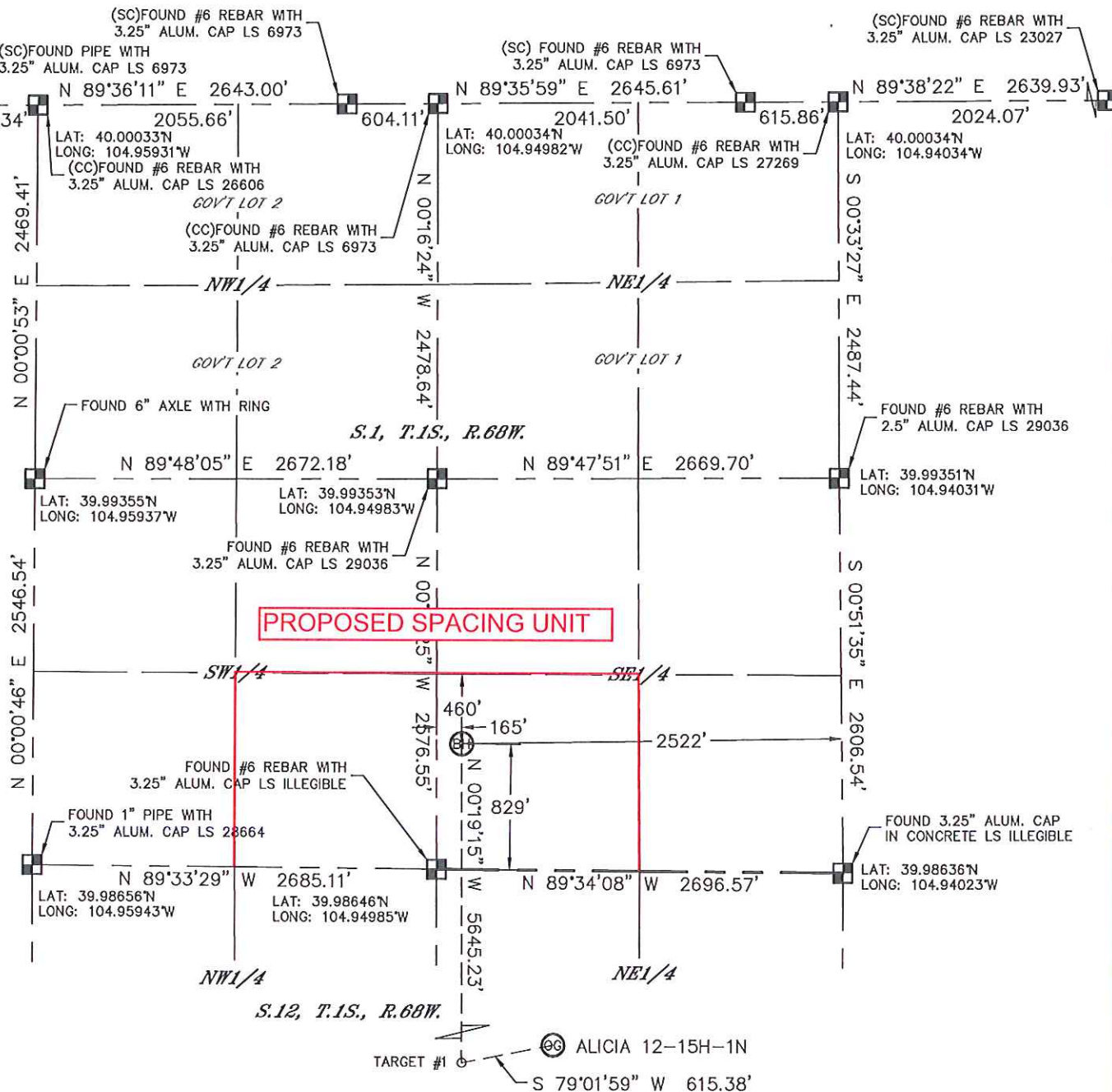


Lat40°, Inc. 1635 Foxtrail Drive, Suite 325 Loveland, CO 970-776-3321

WELL LOCATION CERTIFICATE

THIS MAP DOES NOT REPRESENT A BOUNDARY SURVEY

SECTION: 12
TOWNSHIP: 1S
RANGE: 68W



LEGEND
■ = ALIQUOT MONUMENT AS DESCRIBED
○ = CALCULATED POSITION

SHEET 2 OF 2

Brian T. Brinkman-On Behalf of Lat40°, Inc.
Colorado Licensed Professional
Land Surveyor No. 38175

DATE: 8/18/2014
PROJECT#: 2013026

