

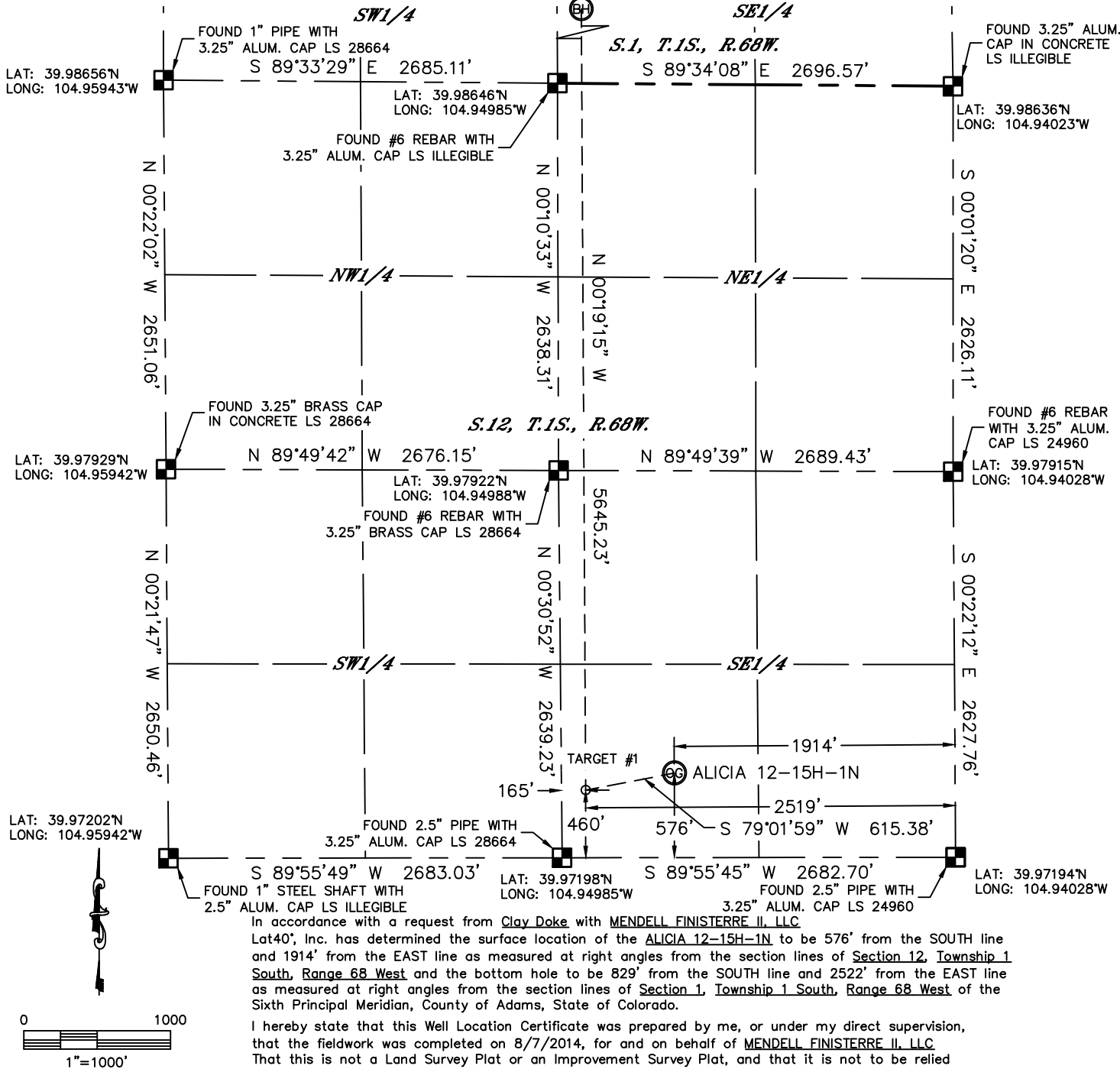


Lat40°, Inc. 1635 Foxtrail Drive, Suite 325 Loveland, CO 970-776-3321

WELL LOCATION CERTIFICATE

THIS MAP DOES NOT REPRESENT A BOUNDARY SURVEY

SECTION: 12
TOWNSHIP: 1S
RANGE: 68W



NOTE:

- 1) Bearings shown are Grid Bearings of the Colorado State Plane Coordinate System, North Zone, North American Datum 1983/2007. The lineal dimensions as contained herein are based upon the "U.S. Survey Foot."
 - 2) Ground elevations are based on an observed GPS elevation (NAVD 1988 DATUM).
 - 3) IMPROVEMENTS: See LOCATION DRAWING for all visible improvements within 400' of disturbed area.
 - 4) SURFACE USE: EX. WELL LOCATION
 - 5) INSTRUMENT OPERATOR: BRIAN ROTTINGHAUS
- NEAREST CULTURAL ITEMS:
BUILDING: ±650' SW
BUILDING UNIT: ±659' SE
HIGH OCCUPANCY BUILDING UNIT: ±1918' SW
DESIGNATED OUTSIDE ACTIVITY AREA: 5280'+
PUBLIC ROAD: ±594' S (MADISON CT.)
ABOVEGROUND UTILITY: ±1197' SE
RAILROAD: ±247' NW
PROPERTY LINE: ±172' NW

SURFACE LOCATION

LAT: 39.97355°N
LONG: 104.94711°W
PDOP: 1.5
ELEV: 5150'
1/4,1/4: SW1/4SE1/4

TARGET #1

LAT: 39.97324°N
LONG: 104.94927°W

BOTTOM HOLE

LAT: 39.98873°N
LONG: 104.94925°W

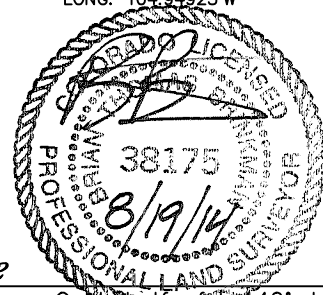
LEGEND

- = ALIQUOT MONUMENT AS DESCRIBED
○ = CALCULATED POSITION

SHEET 1 OF 2

Brian T. Brinkman—On behalf of Lat40°, Inc.
Colorado Licensed Professional
Land Surveyor No. 38175

DATE: 8/18/2014
PROJECT#: 2013026



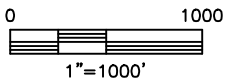
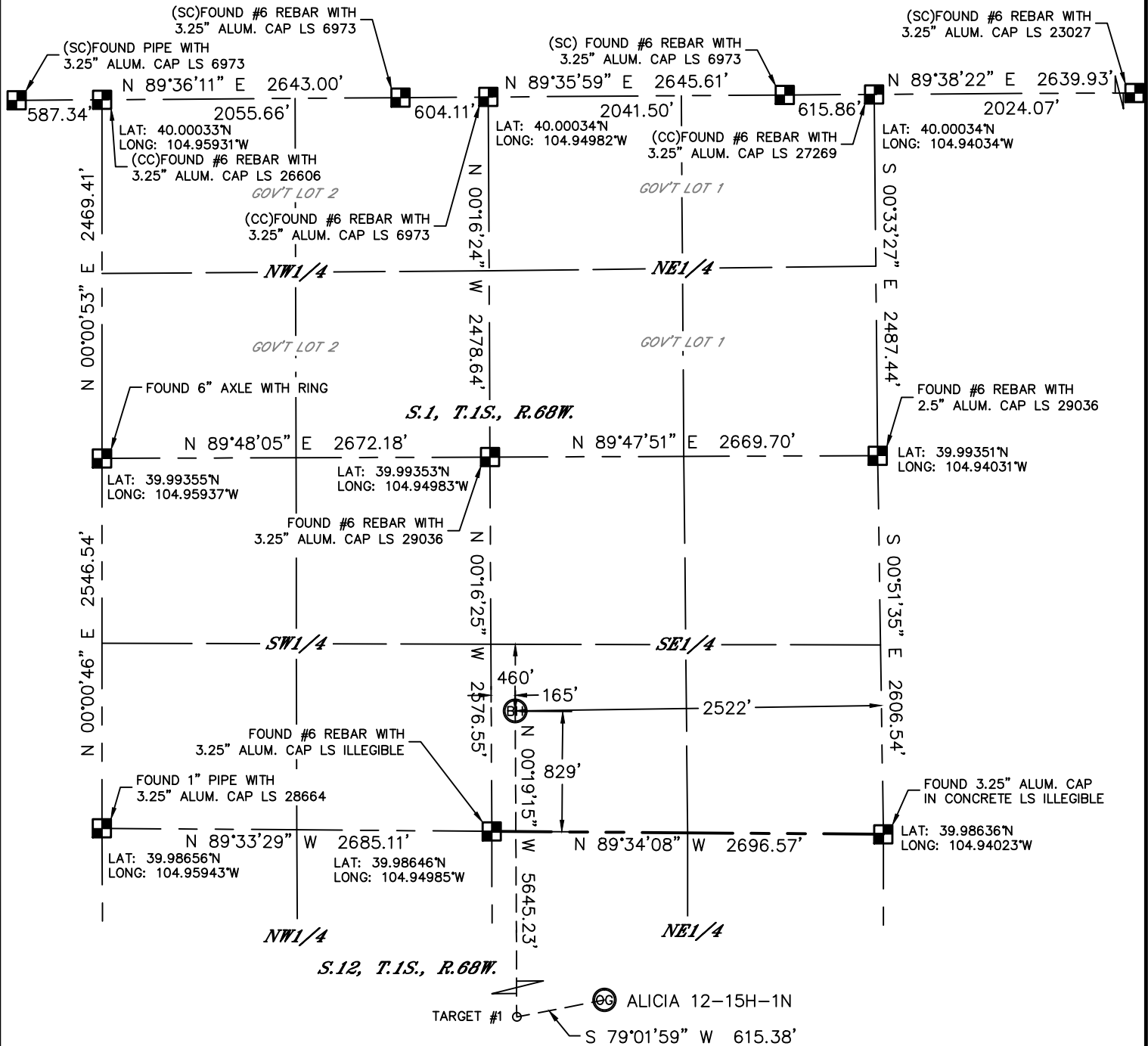


Lat40°, Inc. 1635 Foxtrail Drive, Suite 325 Loveland, CO 970-776-3321

WELL LOCATION CERTIFICATE

THIS MAP DOES NOT REPRESENT A BOUNDARY SURVEY

SECTION: 12
TOWNSHIP: 1S
RANGE: 68W

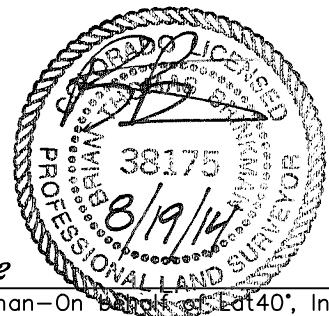


LEGEND

- = ALIQUOT MONUMENT AS DESCRIBED
- = CALCULATED POSITION

SHEET 2 OF 2

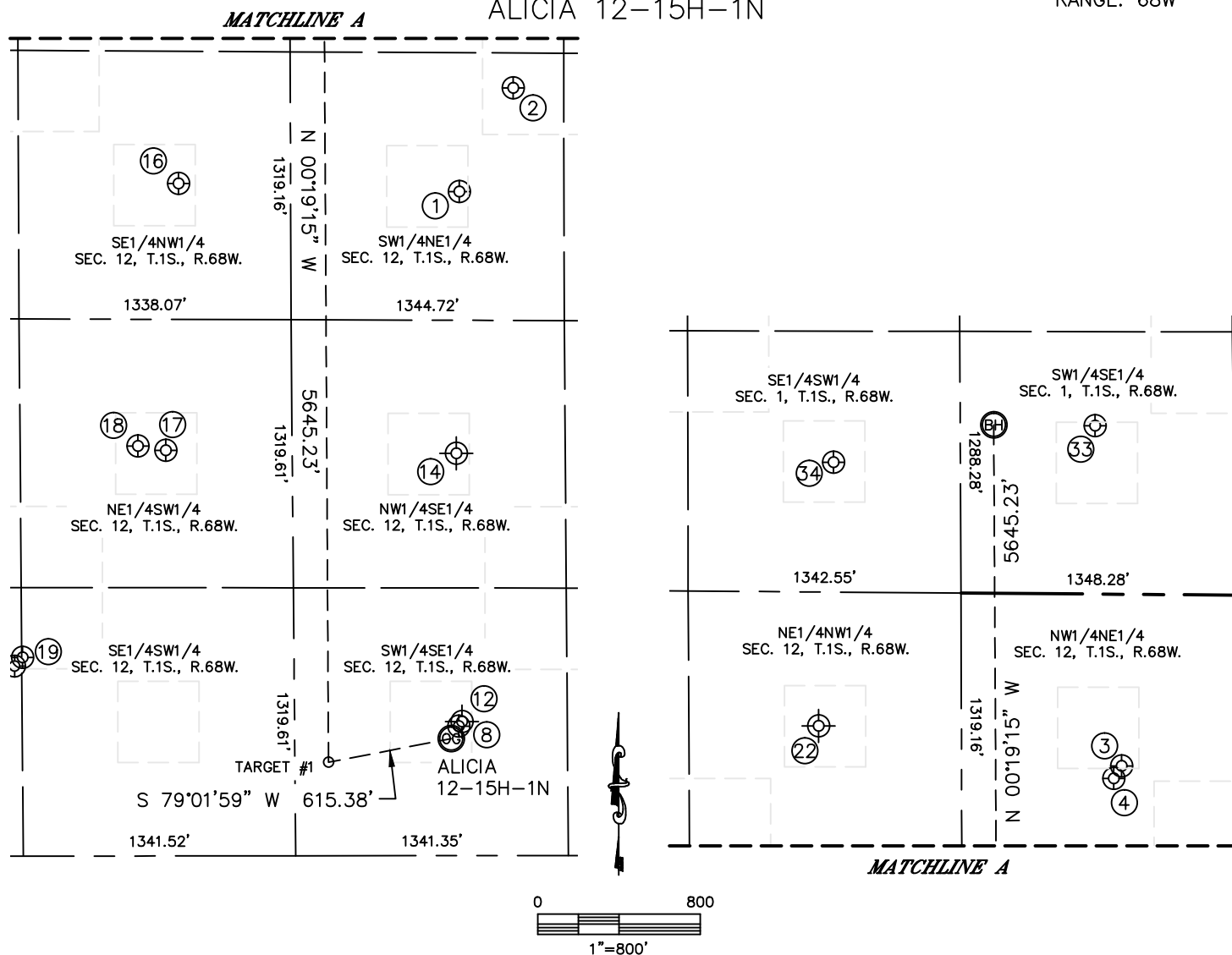
Brian T. Brinkman—On behalf of Lat40°, Inc.
Colorado Licensed Professional
Land Surveyor No. 38175
DATE: 8/18/2014
PROJECT#: 2013026



SITE SKETCH

ALICIA 12-15H-1N

SECTION: 12
TOWNSHIP: 1S
RANGE: 68W



WELL NO.	WELL NAME	SHL FOOTAGE			SHL LAT°	SHL LONG°	PDOP	ELEV (FT.)	1/4/1/4	
1	CROFF 12-5	2002	FNL	1861	FEL	39.98094	-104.94691	2.2	5082	SWNE
2	LENART S-1	1489	FNL	1596	FEL	39.98233	-104.94595	3.7	5083	SWNE
3	TUDEX REINHOLT NC4	846	FNL	1907	FEL	39.98411	-104.94705	3.6	5074	NWNE
4	REINHOLT 12-6	908	FNL	1945	FEL	39.98394	-104.94719	1.6	5076	NWNE
8	RUBY 2	637	FSL	1876	FEL	39.97371	-104.94697	1.7	5150	SWSE
12	MALLO 1	660	FSL	1860	FEL	39.97379	-104.94683	NA	5144	SWSE
14	BELLIGER 12-7	1980	FSL	1880	FEL	39.97742	-104.94687	NA	5115	NWSE
16	CUNDALL 6-12	1972	FNL	2126	FWL	39.98107	-104.95184	2.4	5082	SENW
17	NORTH YORK 11-12	1997	FSL	2056	FWL	39.97747	-104.95209	1.7	5108	NESW
18	NORTH YORK 1	2018	FSL	1919	FWL	39.97753	-104.95258	1.8	5107	NESW
19	NORTH YORK 14-12	978	FSL	1344	FWL	39.97468	-104.95463	2.0	5118	SESW
22	CUNDALL 1	660	FNL	1980	FWL	39.98467	-104.95228	NA	5080	NENW
33	MORRISON 15-1	828	FSL	2024	FEL	39.98871	-104.94748	1.9	5069	SWSE
34	MORRISON 24-1 3	639	FSL	2057	FWL	39.98824	-104.95207	1.7	5087	SESW

NOTE: THE ABANDONED WELL DATA SHOWN IN RED ABOVE WAS OBTAINED FROM COGCC SCOUT CARDS.

DATE: 8/18/2014
PROJECT#: 2013026