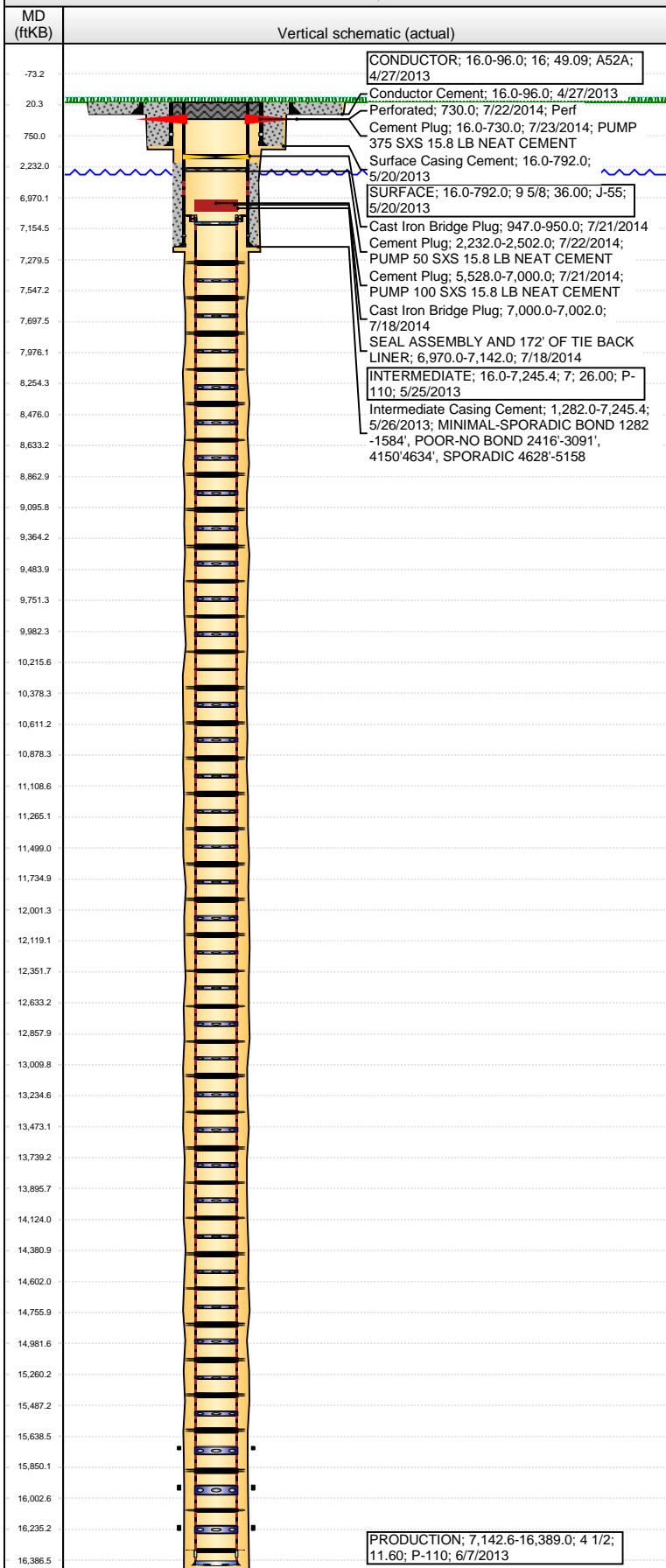


Well Name: SHABLE USX PC AB11-63-1HNL

HORIZONTAL - ORIGINAL HOLE, 9/6/2014 9:34:30 AM



Well Header			
API	Business Unit	District	Well Config
05-123-36701	DJ BASIN	15	HORIZONTAL
Original KB Elevation (ft)	KB - GL / MSL (ftKB)	Spud Date	P & A Date
4,834.00	16.00	5/20/2013	7/23/2014

Comment
 PLUGGED & ABANDONED BY FIELD 4/29/2014; FRAC FAILED DUE TO CASING SPLIT & MECHANICAL PROBLEMS, DECISION MADE TO P & A AFTER ERS DECIDED NOT TO RUN SCIENCE ON THIS WELL.

Directions To Well
 CR 88 & CR 57, EAST 1 MILE, SOUTH 2 MILES, WEST 1 MILE, SOUTH .75 MILES, EAST INTO LOCATION

Congressional Location							
Quarter 1	Quarter 2	Quarter 3	Quarter 4	Section	Township	Twnshp N..	Range
		SW	SW	11	7	N	64
							W

Bottom Hole Location			
North-South Distance (ft)	From N or S Line	East-West Distance (ft)	From E or W Line
990.0	FSL	535.0	FEL

Plug Back Total Depths			
Date	Depth (ftKB)	Method	Com
6/7/2013	16,379.5	CASING TALLY	FLOAT COLLAR

Wellbore Sections			
Section Des	Size (in)	Act Top, MD (ftKB)	Act Btm, MD (ftKB)
CONDUCTOR	26	16.0	96.0
SURFACE	13 3/4	96.0	802.0
INTERMEDIATE	8 3/4	802.0	7,255.0
LATERAL	6 1/8	7,255.0	16,399.0

Zone Statuses			
Zone Name	Status Date	Status	Job
NIOBRARA	4/29/2014	P&A	DRILLING/COMPLETION - ORIGINAL, 5/19/2013 06:00

Casing Strings							
CONDUCTOR, 96.0ftKB							
Casing Description	Run Date	OD (in)	Wt/Len (l...)	Grade	Top, MD (ft...)	MD (ftKB)	
CONDUCTOR	4/27/2013	16	49.09	A52A	16.0	96.0	

SURFACE, 792.0ftKB							
Casing Description	Run Date	OD (in)	Wt/Len (l...)	Grade	Top, MD (ft...)	MD (ftKB)	
SURFACE	5/20/2013	9 5/8	36.00	J-55	16.0	792.0	

INTERMEDIATE, 7,245.4ftKB							
Casing Description	Run Date	OD (in)	Wt/Len (l...)	Grade	Top, MD (ft...)	MD (ftKB)	
INTERMEDIATE	5/25/2013	7	26.00	P-110	16.0	7,245.4	

PRODUCTION, 16,389.0ftKB							
Casing Description	Run Date	OD (in)	Wt/Len (l...)	Grade	Top, MD (ft...)	MD (ftKB)	
PRODUCTION	6/7/2013	4 1/2	11.60	P-110	7,142.6	16,389.0	

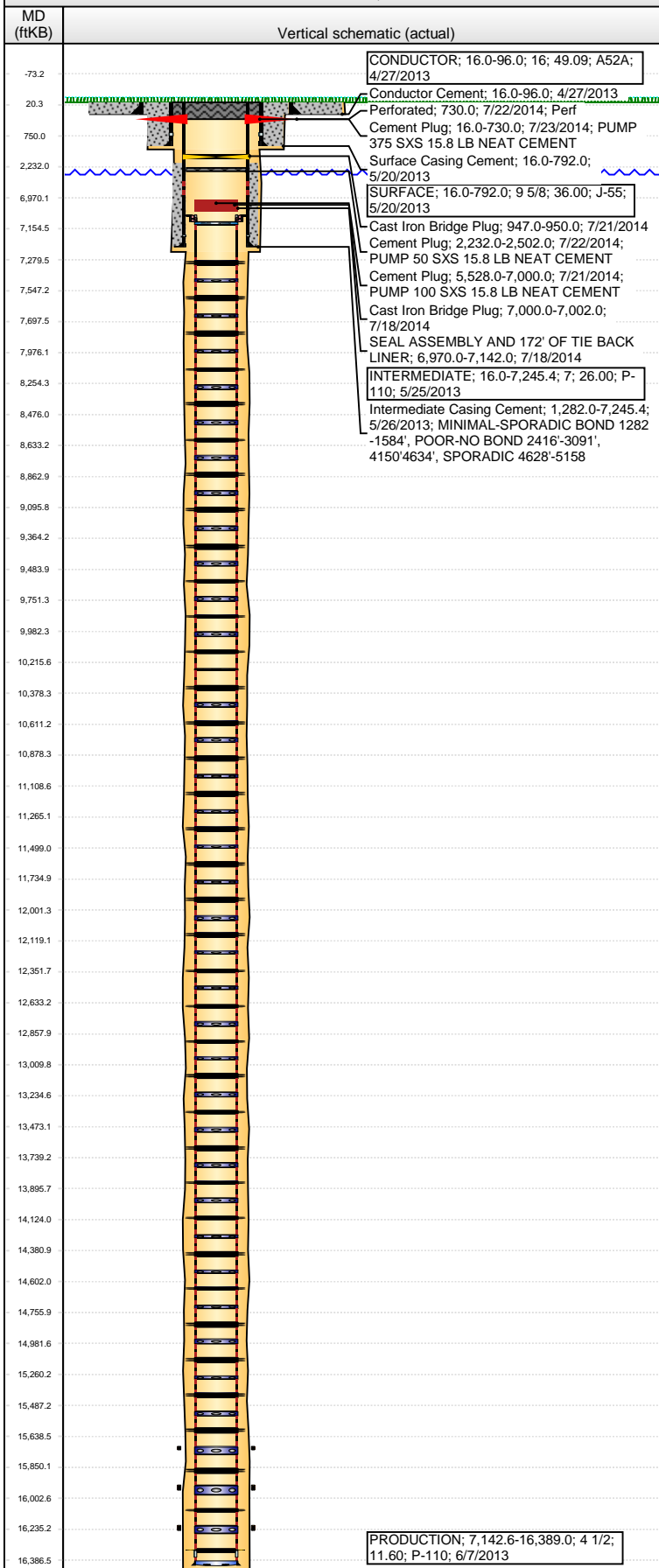
Cement		
Description	Top Depth (ftKB)	Bottom Depth (ftKB)
Conductor Cement	16.0	96.0
Description	Top Depth (ftKB)	Bottom Depth (ftKB)
Surface Casing Cement	16.0	792.0
Description	Top Depth (ftKB)	Bottom Depth (ftKB)
Intermediate Casing Cement	1,282.0	7,245.4
Description	Top Depth (ftKB)	Bottom Depth (ftKB)
Cement Plug	5,528.0	7,000.0
Description	Top Depth (ftKB)	Bottom Depth (ftKB)
Cement Plug	2,232.0	2,502.0
Description	Top Depth (ftKB)	Bottom Depth (ftKB)
Cement Plug	16.0	730.0

Tubing Components							
Item Des	OD (in)	Wt (lb/ft)	Grade	Jts	Len (ft)	Btm (ftKB)	Btm (TVD) (ftKB)

Perforation Data					
Zone	Bnch/St g	Entered Shot Total	Top (ftKB)	Btm (ftKB)	Date
		4	730.00	730.00	7/22/2014

Well Name: SHABLE USX PC AB11-63-1HNL

HORIZONTAL - ORIGINAL HOLE, 9/6/2014 9:34:32 AM



Stimulations & Treatments

Date	Zone	Primary Job Type
8/26/2013	NIORBARA, ORIGINAL HOLE	DRILLING/COMPLETION - ORIGINAL
Technical Result	Tech Result Details	Tech Result Note
Failure	Mechanical	

Comment
 (36 STAGE NIO HORIZONTAL)
 OPENED WELLHEAD AT 11:29 ON 8-26-2013, 295 PSI, 0 PSI ON SURFACE.
 INTERVAL 1)-SHUT DOWN TO DROP THE 1.5 BALL. ISIP 3140 PSI. FG 0.84 PSI/FT.
 INTERVAL 2) - SHUT DOWN 45 BBLS OVER BALL SEAT VOLUME. WE DID NOT SEE ANY BALL SIGNATURE. BAKER HUGHES HAD US COME OFF LINE (ISIP= 3040 PSI), AND COME BACK UP AT 13 BPM, STILL NO SIGNATURE. CAME BACK OFFLINE, ISIP=3142 PSI. BAKER HUGHES TOOL HAND HAD US BACK UP AT 16 BPM. WE FINALLY GOT A 28 PSI INCREASE. RETURNED TO PUMPING SCHEDULE. DURING 0.35 LB SAND THE INLINE DENSO WAS NOT READING CORRECTLY. WENT THROUGH 0.35 LB USING THE BLENDER DENSO AND THEY RECALIBRATED DURING PAD. CALLED FOR A NEW INLINE DENSO. CURRENTLY IT IS SILL WORKING, BUT WILL HAVE THE NEW ONE ON LOCATION INCASE OF TOTAL FAILURE. WE WERE IN 3 LB SAND FRACING AT 7240 PSI AND HAD A 3611 PSI DROP. NO BACKSIDE CHANGE OR SURFACE CHANGE. CALLED GREG AND EMAILED CHARTS TO GREG. OFFICE MADE DECISION TO DROP BALL FOR INTERVAL 3. PUMPED 50BBLS OF CROSSLINK DROPPED BALL THEN PUMPED ANOTHER 50BBLS OF CROSSLINK PRIOR TO SWAPPING TO SLICKWATER. PUMPED 215 BBLS OVER CAPACITY TO SLEEVE 3 BUT NO BALL SIGNATURE SEEN. OFFICE HAD FRAC CREW RIG DOWN AND MOVE TO NEXT WELL. SHUT DOWN 17:71 ON 8/26/2013 ISIP = 3,065 PSI, 15 MINUTE 2,988 PSI.

Other In Hole

Run Date	Des	OD (in)	Top (ftKB)	Btm (ftKB)
7/18/2014	Cast Iron Bridge Plug	3.99	7,000.0	7,002.0
7/18/2014	SEAL ASSEMBLY AND 172' OF TIE BACK LINER	4 1/2	6,970.0	7,142.0
7/21/2014	Cast Iron Bridge Plug	6.99	947.0	950.0

Logs

Date	Type	Top, MD (ftKB)	Btm, MD (ftKB)
5/3/2013	MWD GAMMA - MD	1,000.0	16,398.0
5/3/2013	MWD GAMMA - TVD	1,000.0	6,890.0
6/2/2013	MUD LOG - HZ	6,100.0	16,399.0
6/2/2013	MUD LOG - VERT	800.0	6,320.0
6/12/2013	CBL/CCL/GR	24.0	7,162.0
7/11/2013	GYRO	16.0	6,540.0