

WELL NAME:	Martin Livestock 11-17			FIELD:	Sandwash		
QTR QTR:	NW NW	SEC:	17	TWNSP:	10N	RNG:	93W
COUNTY:	Moffat			CO	SPUD DATE:	12/29/03	
KB:	GL:	6996'	TD:	8155'	PBTD:	8092'	API: 05-081-07167
LAST UPDATED:		6/29/2011 *		BY:	Brad Shawhan		

*Information from COGCC data; dated 1/3/2006

CASING DETAILS

PURPOSE	SIZE	WEIGHT	GRADE	SET DEPTH	CMT	TOC
SURFACE	8 5/8"	24#		930'	470sx	sfc
INTERMEDIATE						
PRODUCTION	5.5"	17#		8155'	535sx	3050'

RECORD FROM TOP TO BOTTOM

DESCRIPTION	SIZE	WEIGHT	GRADE	SET DEPTH
TBG	2-3/8"			7773'

WELL HISTORY

12/29/03	Spud
01/29/2004	Frac Lewis w/ 200,190# 20/40 and 700 N2. Slurry Rate 8 bbl/min N2 rate 30 bpm N2 volume 1427 bbl (ISIP-3030/ATP-4079)

LIFT DETAIL
Plunger

MERIT INTEREST	
GWl:	100.00%
NRI:	87.03%

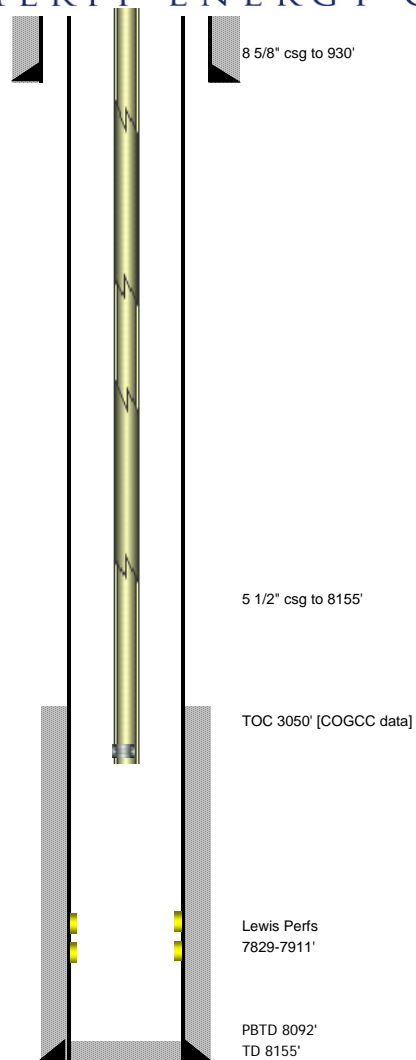
Perforation Detail		
Zone 1	Zone 2	Zone 3

FORMATION TOPS	
FORT UNION	4338
FORT UNION COAL	5265
LANCE	6288
FOX HILLS	7040
LEWIS	7129



MERIT ENERGY COMPANY

COGCC Document No. 2055968
Received 9/5/2014



WELL NAME:	Martin Livestock 11-17			FIELD:	Sandwash		
QTR QTR:	NW NW	SEC:	17	TWNSP:	10N	RNG:	93W
COUNTY:	Moffat		ST:	CO	SPUD DATE:		12/29/03
KB:	GL:	6996'	TD:	8155'	PBTD:	8092'	API: 05-081-07167
LAST UPDATED:		6/29/2011 *		BY:	Brad Shawhan		

*Information from COGCC data; dated 1/3/2006

CASING DETAILS

PURPOSE	SIZE	WEIGHT	GRADE	SET DEPTH	CMT	TOC
SURFACE	8 5/8"	24#		930'	470sx	sfc
INTERMEDIATE						
PRODUCTION	5.5"	17#		8155'	535sx	3050'

RECORD FROM TOP TO BOTTOM

DESCRIPTION	SIZE	WEIGHT	GRADE	SET DEPTH

WELL HISTORY

12/29/03	Spud
01/29/2004	Frac Lewis w/ 200,190# 20/40 and 70Q N2. Slurry Rate 8 bbl/min N2 rate 30 bpm N2 volume 1427 bbl (ISIP-3030/ATP-4079)

LIFT DETAIL
Plunger

MERIT INTEREST	
GWl:	100.00%
NRI:	87.03%

FORMATION TOPS	
FORT UNION	4338
FORT UNION COAL	5265
LANCE	6288
FOX HILLS	7040
LEWIS	7129

Perforation Detail		
Zone 1	Zone 2	Zone 3

