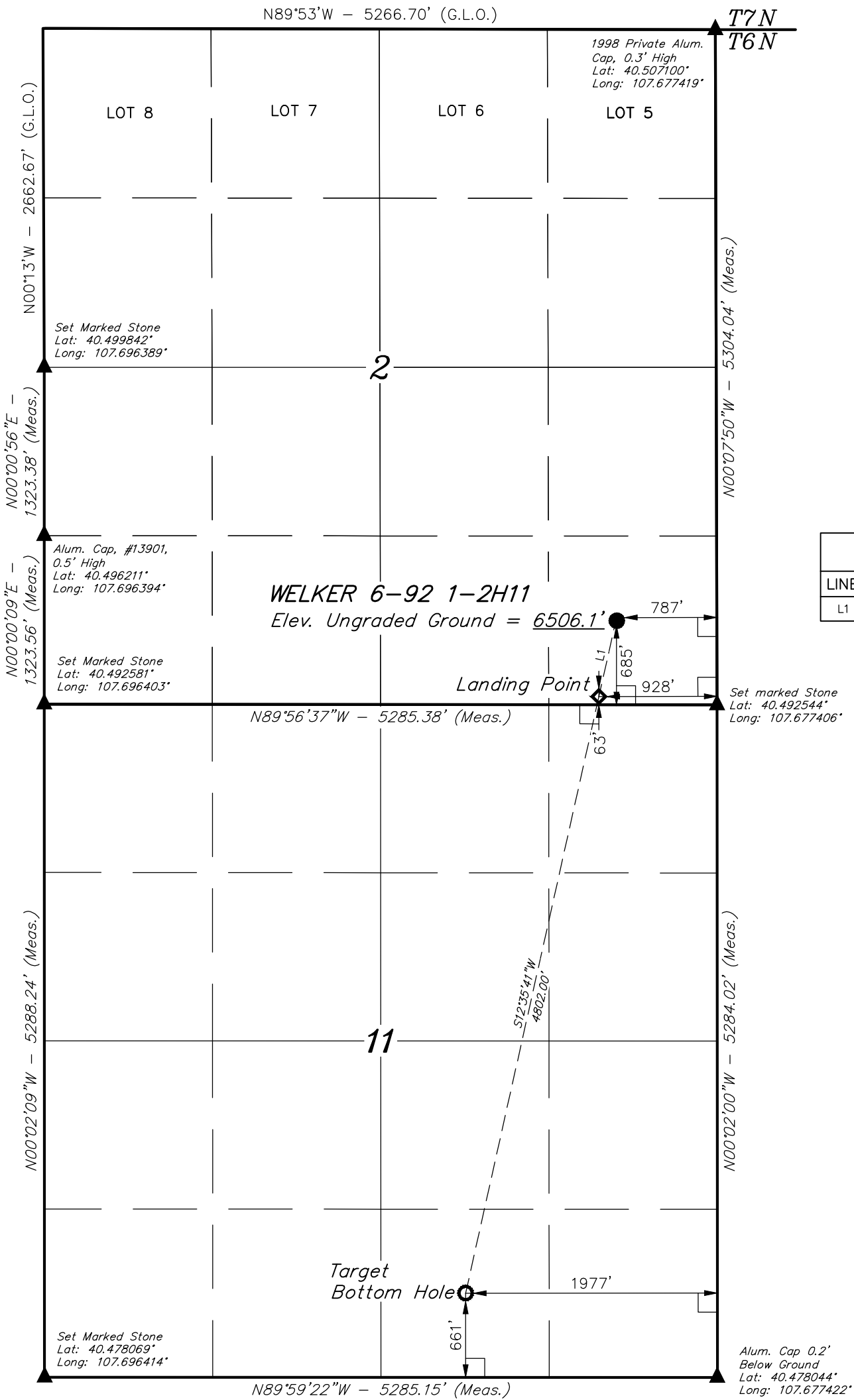


LEGEND:

- └─┘ = 90° SYMBOL  
● = PROPOSED WELLHEAD.  
○ = TARGET BOTTOM HOLE.  
◆ = LANDING POINT  
▲ = SECTION CORNERS LOCATED.

T6N, R92W, 6th P.M.



LINE TABLE		
LINE	DIRECTION	LENGTH
L1	S12°35'42"W	636.62'

PDOP = 1.3



NAD 83 (TARGET BOTTOM HOLE)	NAD 83 (LANDING POINT)	NAD 83 (SURFACE LOCATION)
LATITUDE = 40°28'47.53" (40.479869)	LATITUDE = 40°29'33.81" (40.492725)	LATITUDE = 40°29'39.95" (40.494431)
LONGITUDE = 107°41'04.29" (107.684525)	LONGITUDE = 107°40'50.66" (107.680739)	LONGITUDE = 107°40'48.85" (107.680236)
NAD 27 (TARGET BOTTOM HOLE)	NAD 27 (LANDING POINT)	NAD 27 (SURFACE LOCATION)
LATITUDE = 40°28'47.63" (40.479897)	LATITUDE = 40°29'33.92" (40.492756)	LATITUDE = 40°29'40.05" (40.494458)
LONGITUDE = 107°41'02.04" (107.683900)	LONGITUDE = 107°40'48.41" (107.680114)	LONGITUDE = 107°40'46.60" (107.679611)
STATE PLANE NAD 83	STATE PLANE NAD 83	STATE PLANE NAD 83
N: 1425141.94 E: 2392365.14	N: 1429797.97 E: 2393533.61	N: 1430415.23 E: 2393688.52
STATE PLANE NAD 27	STATE PLANE NAD 27	STATE PLANE NAD 27
N: 425140.88 E: 1392523.04	N: 429796.90 E: 1393691.50	N: 430414.16 E: 1393846.41

CERTIFICATE  
THIS IS TO CERTIFY THAT THE ABOVE PLAT WAS PREPARED FROM FIELD NOTES OF ACTUAL SURVEYS MADE BY ME OR UNDER MY SUPERVISION, AND THAT THE SAME ARE TRUE AND CORRECT TO THE BEST OF MY KNOWLEDGE AND BELIEF.



BASIS OF BEARINGS  
BASIS OF BEARINGS IS A G.P.S. OBSERVATION

BASIS OF ELEVATION  
SPOT ELEVATION LOCATED AT THE NORTHEAST CORNER OF SECTION 10, T6N, R93W, 6th P.M., TAKEN FROM THE THE HORSE GULCH, QUADRANGLE, COLORADO, MOFFAT COUNTY, 7.5 MINUTE QUAD. (TOPOGRAPHIC MAP) PUBLISHED BY THE UNITED STATES DEPARTMENT OF THE INTERIOR, GEOLOGICAL SURVEY. SAID ELEVATION IS MARKED AS BEING 6246 FEET.

SOUTHWESTERN ENERGY PRODUCTION COMPANY

WELKER 6-92 1-2H11  
SE 1/4 SE 1/4, SECTION 2, T6N, R92W, 6th P.M.  
MOFFAT COUNTY, COLORADO

SURVEYED BY: JOHN FLOYD, E.M.	DATE: 07-23-14
DRAWN BY: Z.L.	DATE DRAWN: 04-03-14
SCALE: 1" = 1000'	REVISED: 08-20-14 A.R.

WELL LOCATION PLAT



UELS, LLC  
Corporate Office \* 85 South 200 East  
Vernal, UT 84078 \* (435) 789-1017

