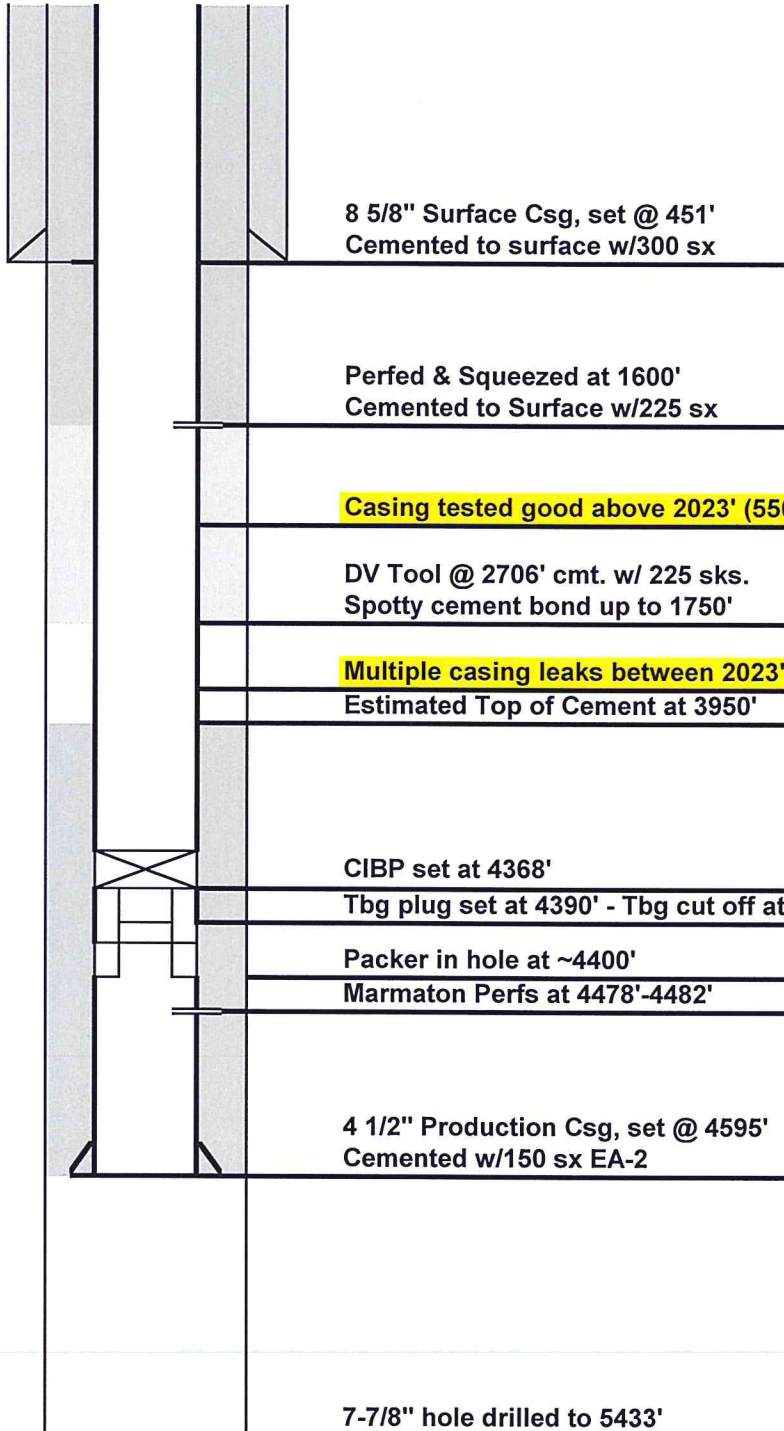




DRILLING COMPANY, INC.

WICHITA, KANSAS

CURRENT WELLBORE CONFIGURATION



Date:	8/21/2014
Well Name:	APC-Charlotte #2-3
Location:	2390' FNL & 718' FEL
	Section 3-T16S-R45W
County:	Cheyenne
State:	Colorado
API:	05-061-06730-00
Spud Date:	7/2/1996
Hole Size	12 1/4"
Surface Casing:	Set @ 451' (8 5/8")
Cemented with:	300 sx
Production Csg:	Set @ 4595' (4 1/2")
Cemented with:	150 sx EA-2
RTD:	5433'

Log Tops:
Stone Corral
B/Stone Corral
Shawnee (Topeka)
Heebner Shale
Lansing
Marmaton
Fort Scott
Cherokee Shale
Atoka
Morrow Shale
Keyes
Mississippi
LTD

5433