

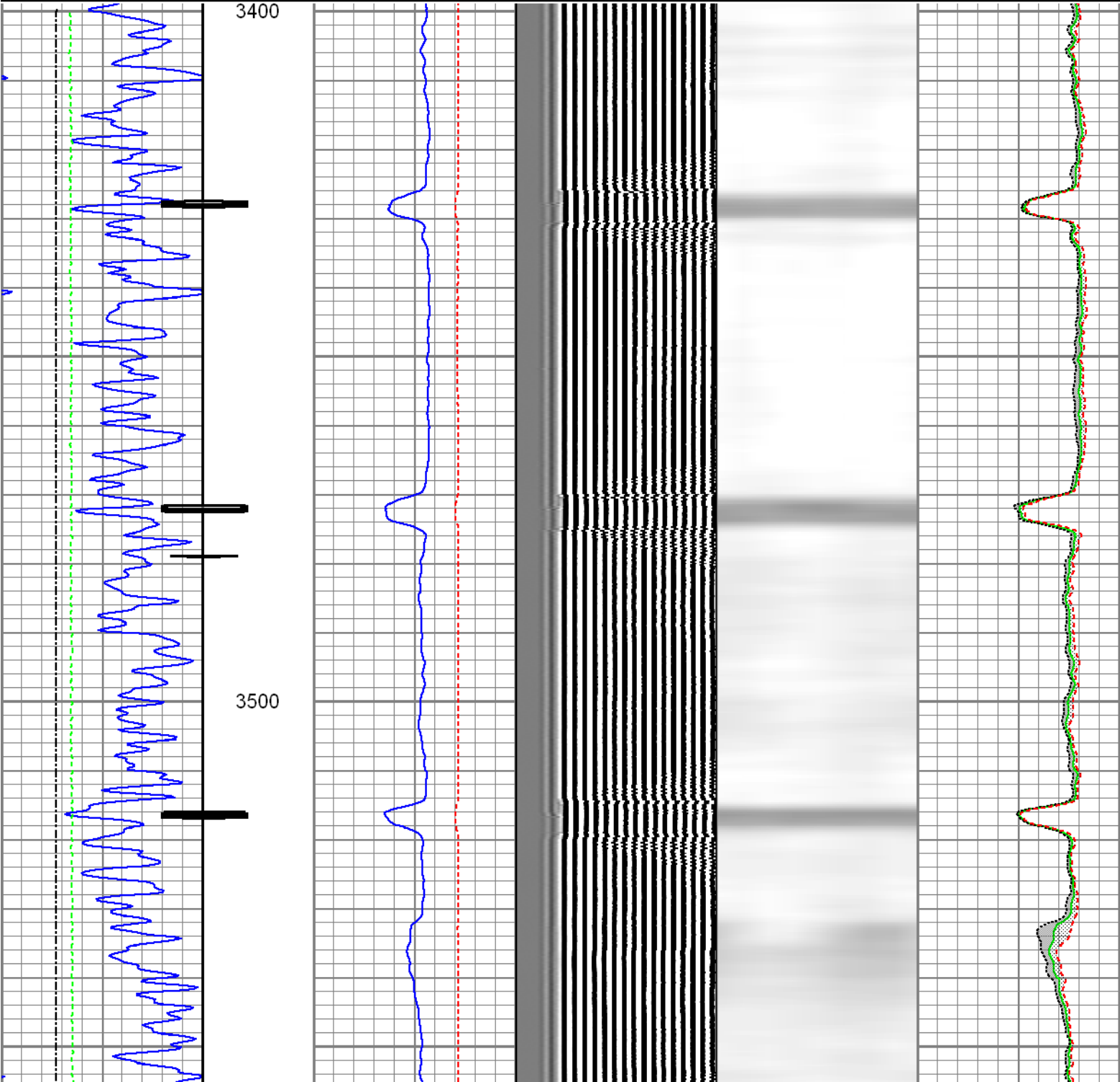
<<< Fold Here >>>
All interpretations are opinions based on inferences from electrical or other measurements and we cannot and do not guarantee the accuracy or correctness of any interpretation, and we shall not, except in the case of gross or willful negligence on our part, be liable or responsible for any loss, costs, damages, or expenses incurred or sustained by anyone resulting from any interpretation made by any of our officers, agents or employees. These interpretations are also subject to our general terms and conditions set out in our current Price Schedule.
Comments
Log ran as per Customer request Log ran from 4935 FT to 3397 FT Log ran with no surface induced pressure. Log correlated to KB. Estimated Cement Top: 3658'
Thank you for choosing FMC Technologies Completion Services!!

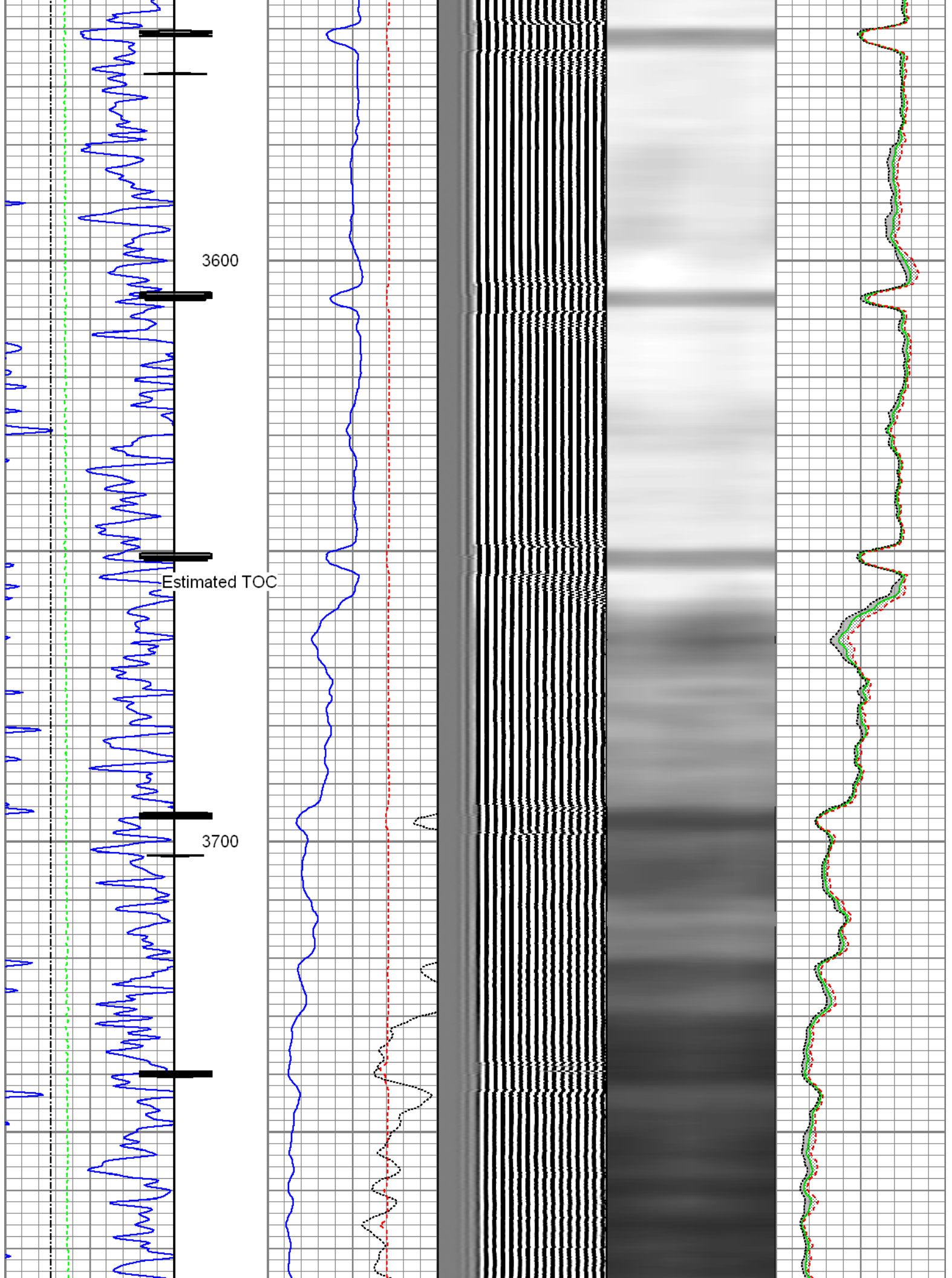


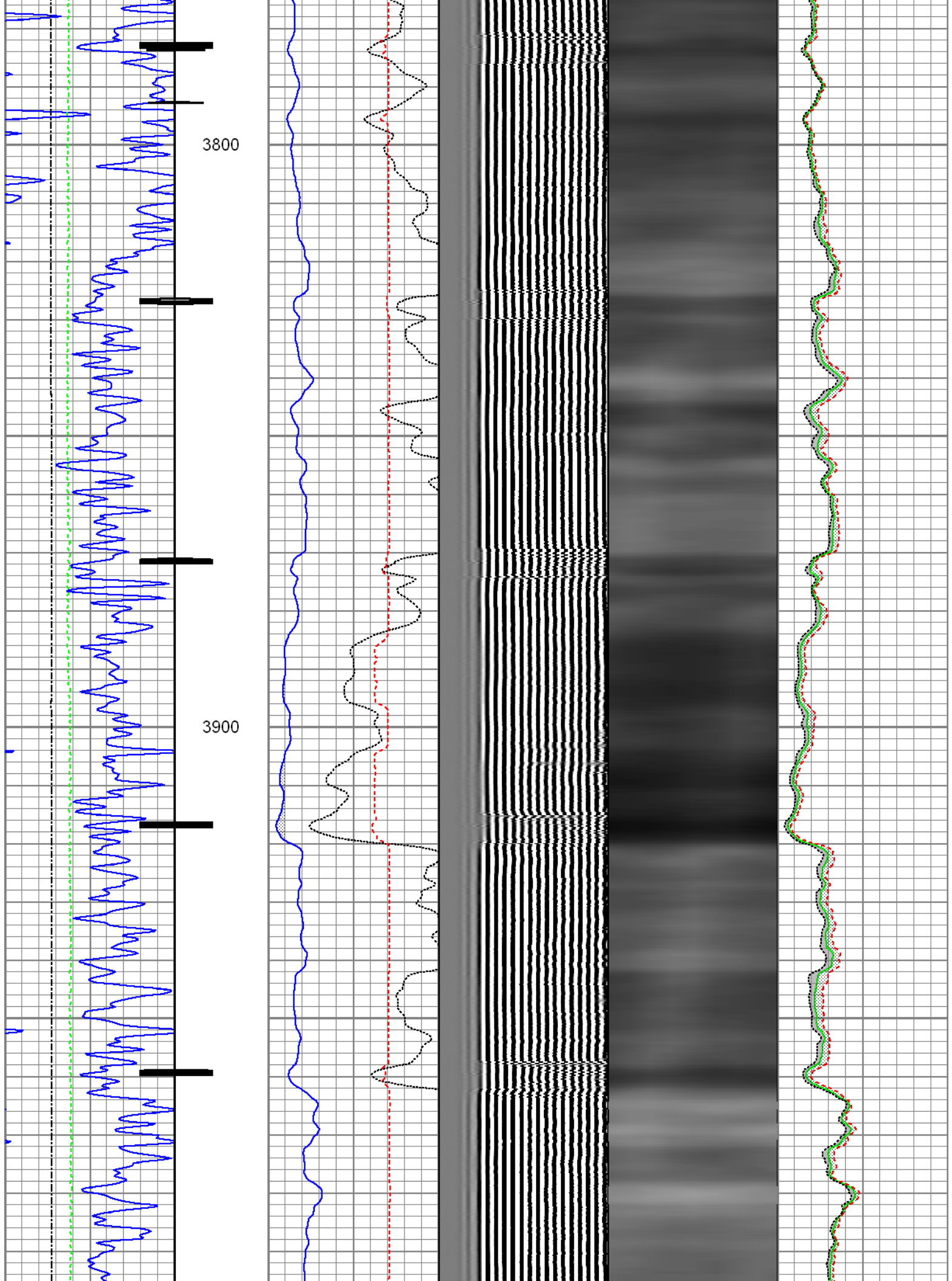
Recorded at -0- PSI Surface Induced Pressure

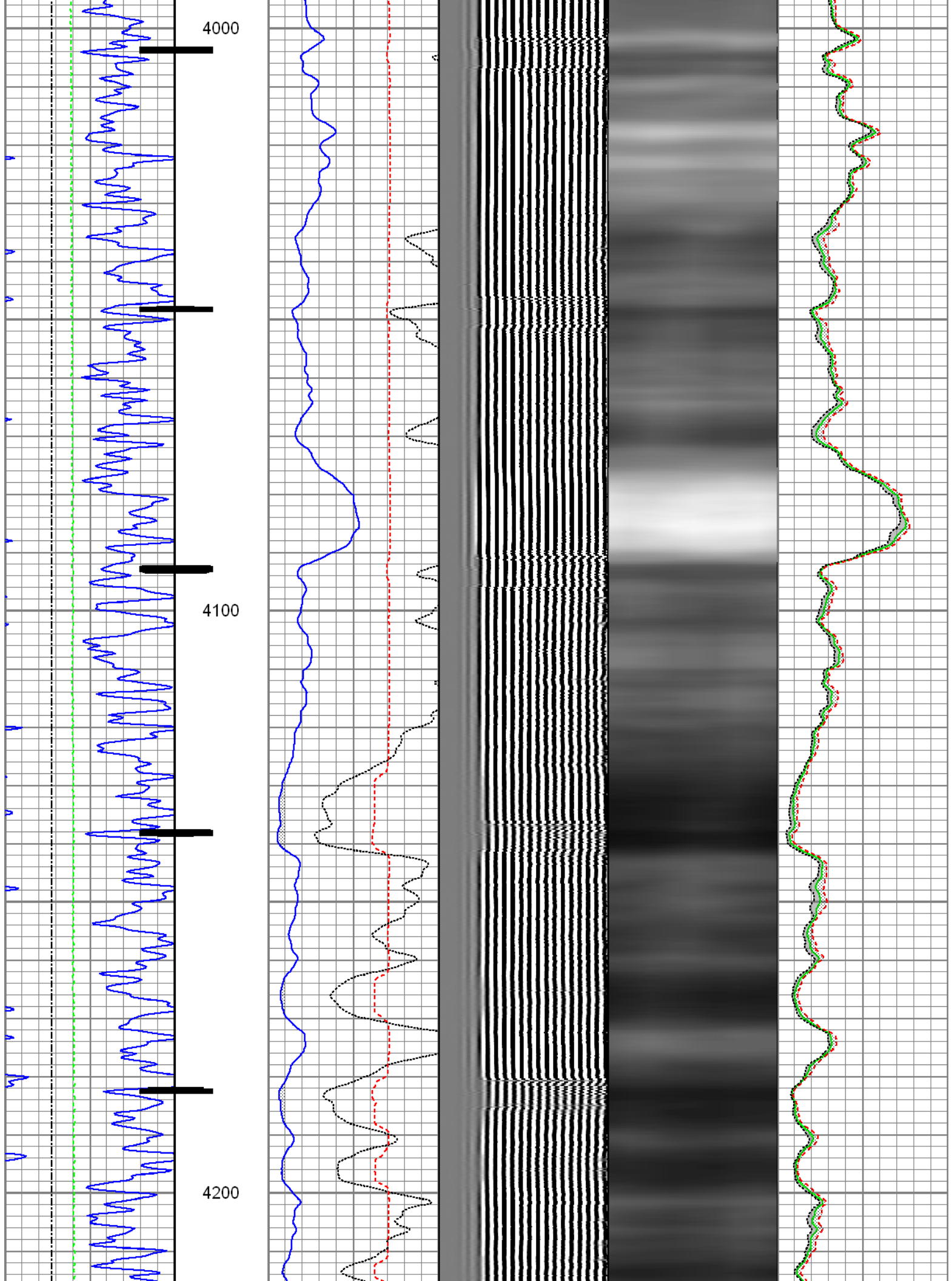
Database File: anadarko uprr 21 pan am l-1.db  
Dataset Pathname: pass3  
Presentation Format: rbt007  
Dataset Creation: Thu Aug 14 10:07:24 2014 by Log 7.0 B1  
Charted by: Depth in Feet scaled 1:240

Gamma Ray	3' Amplitude	5' Variable Density Log	Sector Map	Average Amplitude
30 (GAPI) 130	0 (mV) 100	200 1200		0 100
Casing Collar Locator	3' Amplitude x 5			Minimum Amplitude
Line Speed	0 (mV) 20			0 100
-150 (ft/min) 150	3' Travel Time			Maximum Amplitude
Line Tension	650 (usec) 150			0 100
0 (lb) 2000				

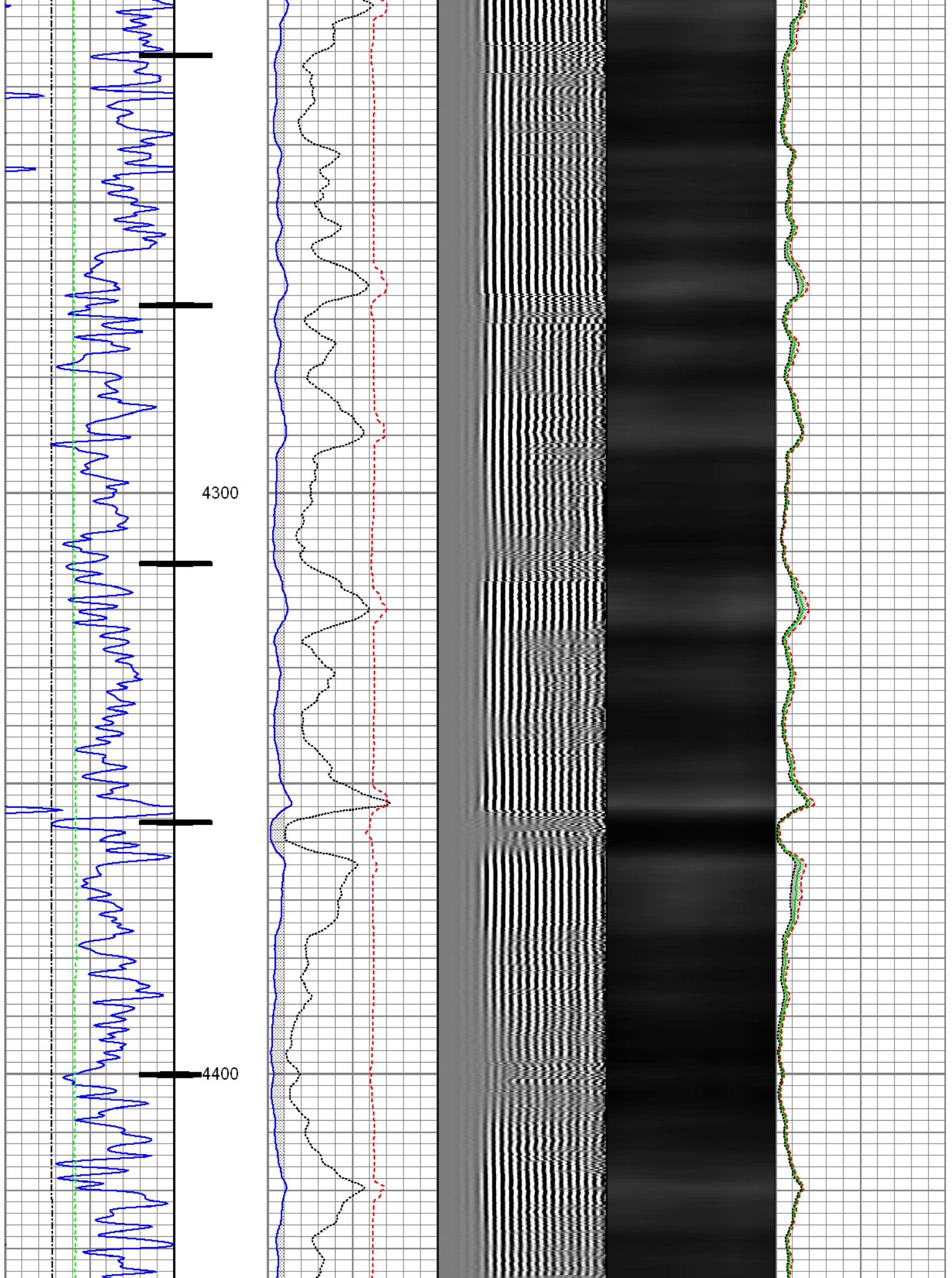


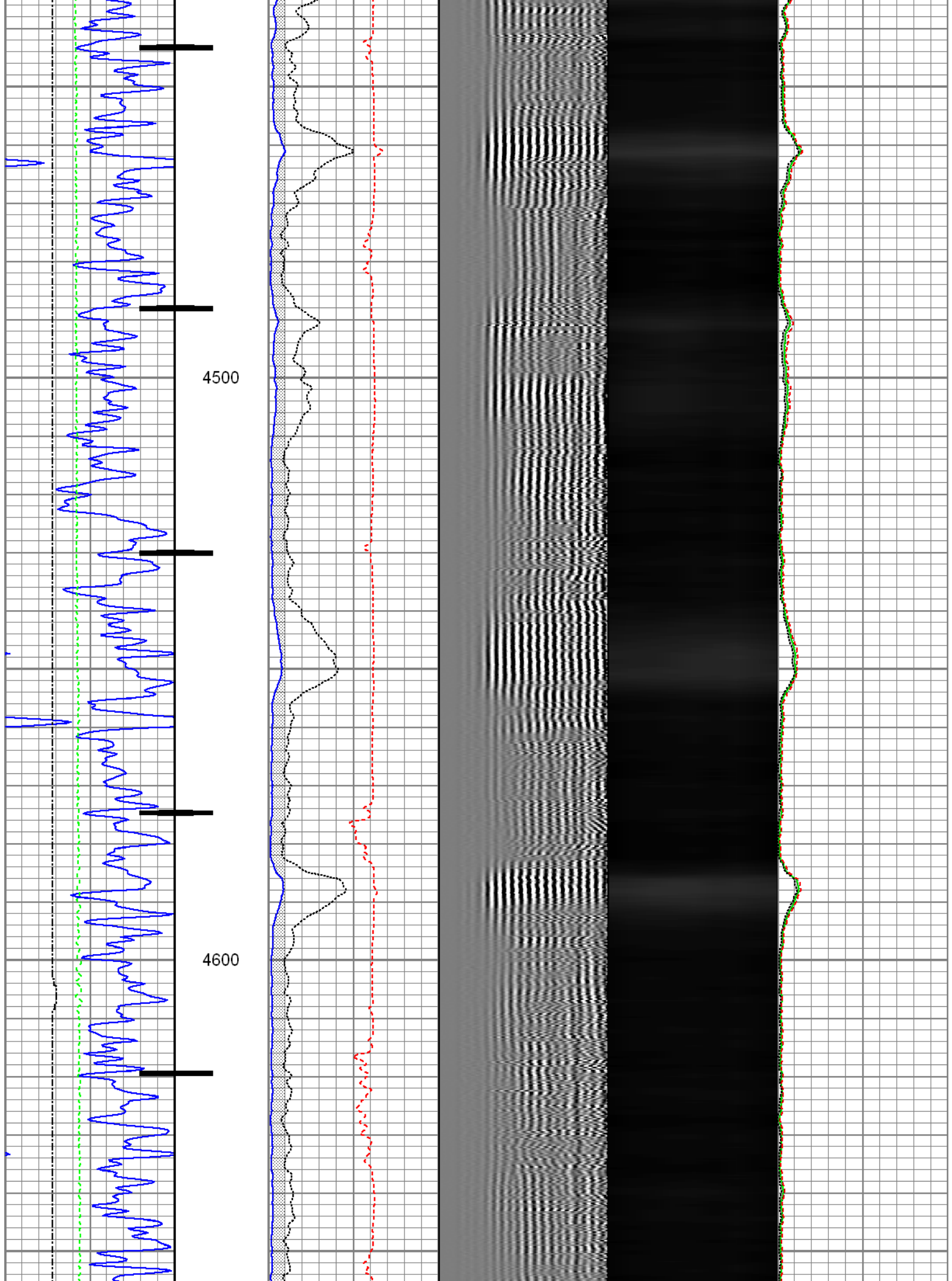


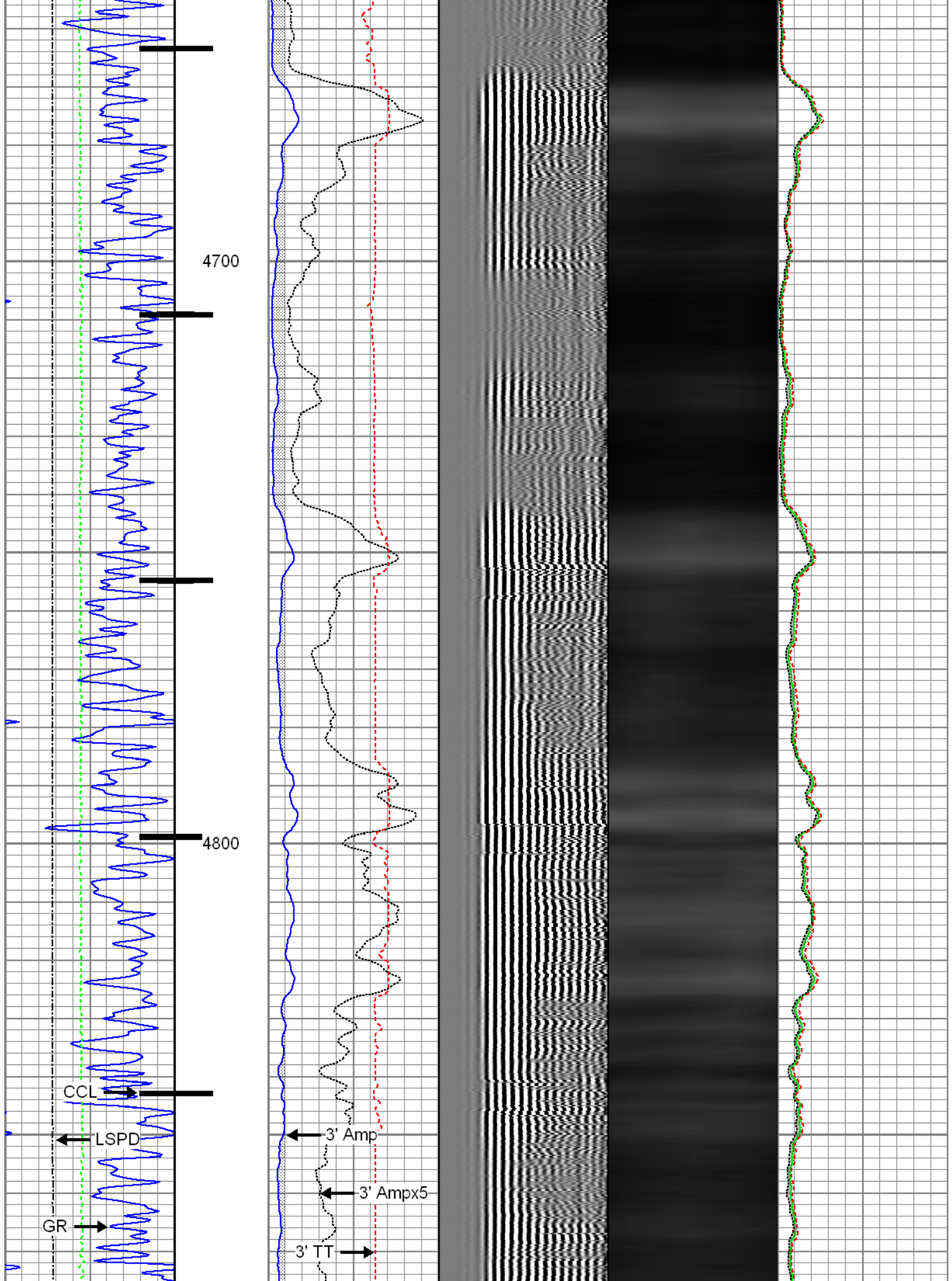




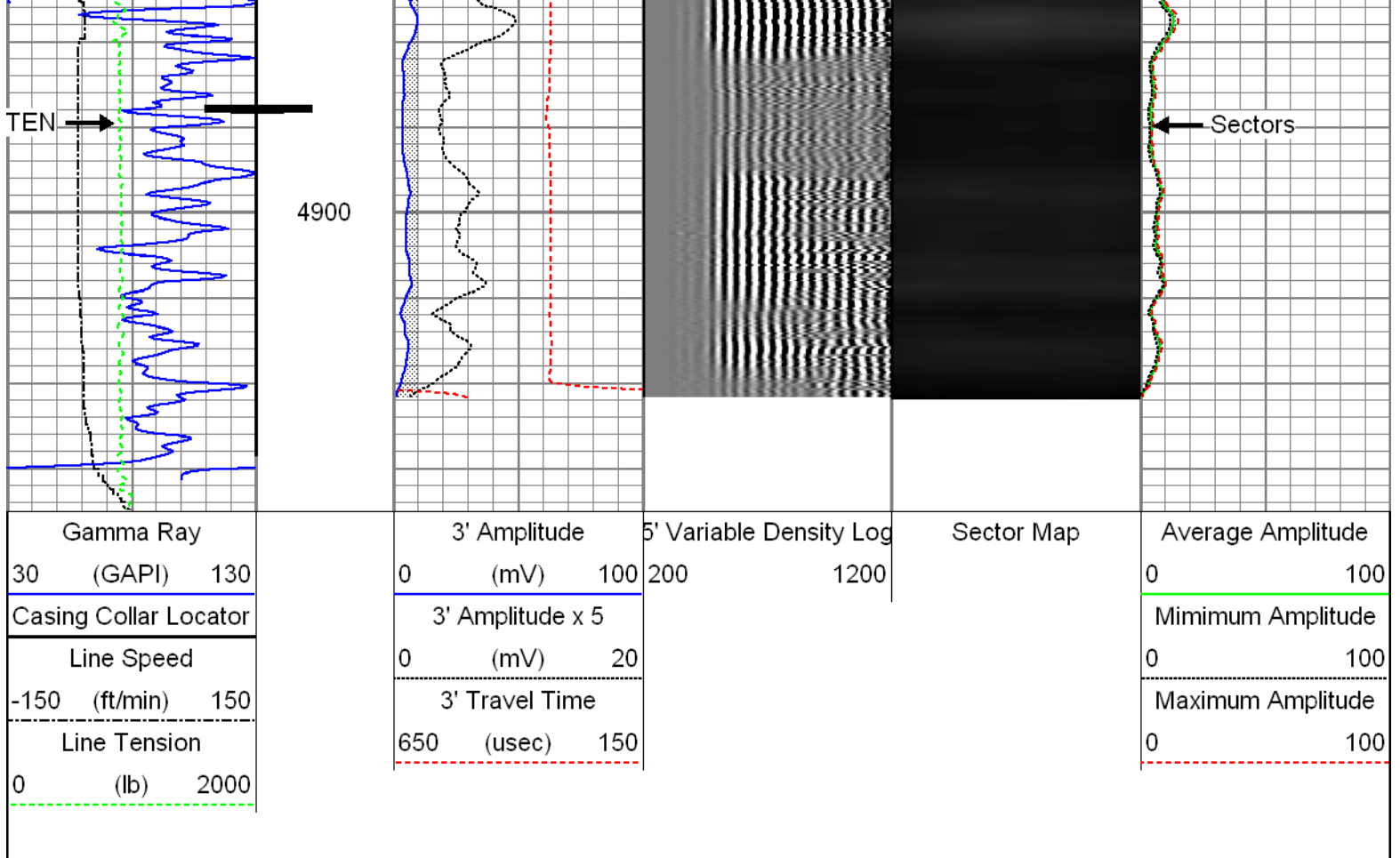








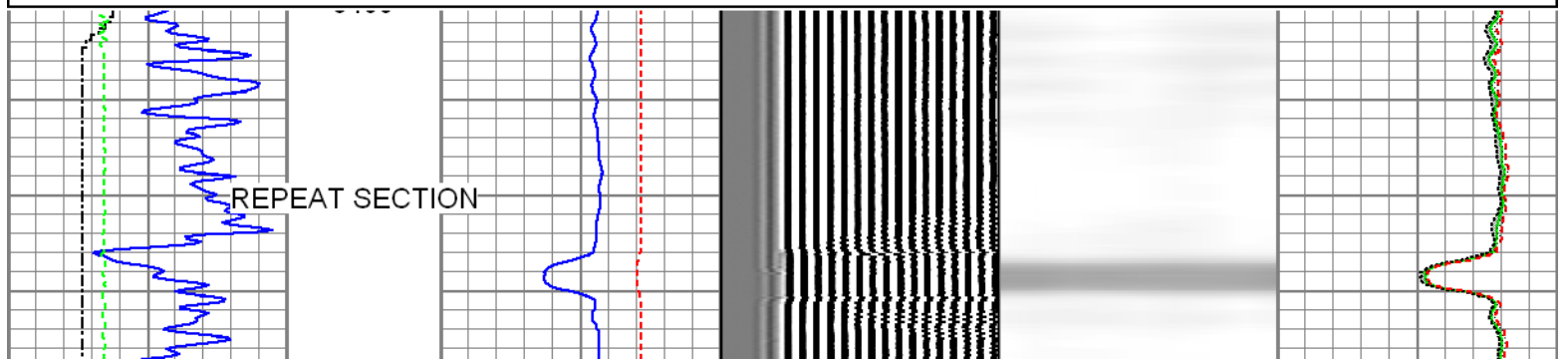
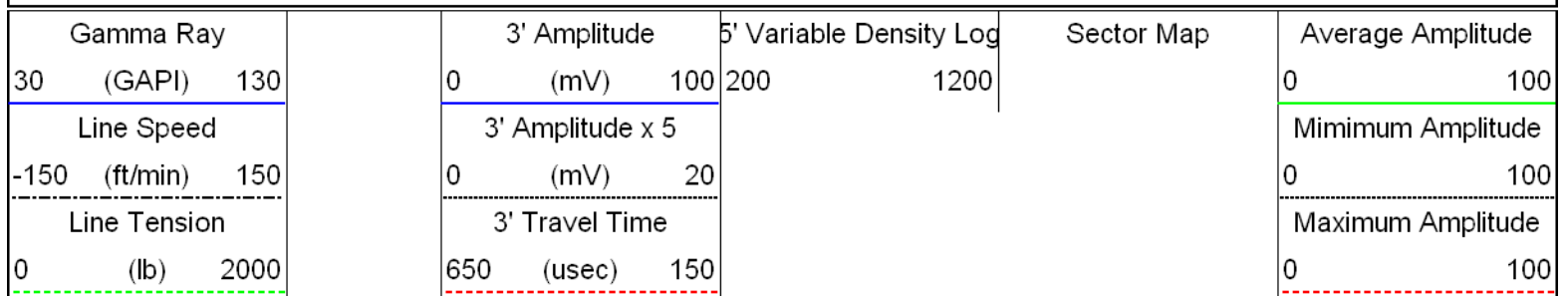


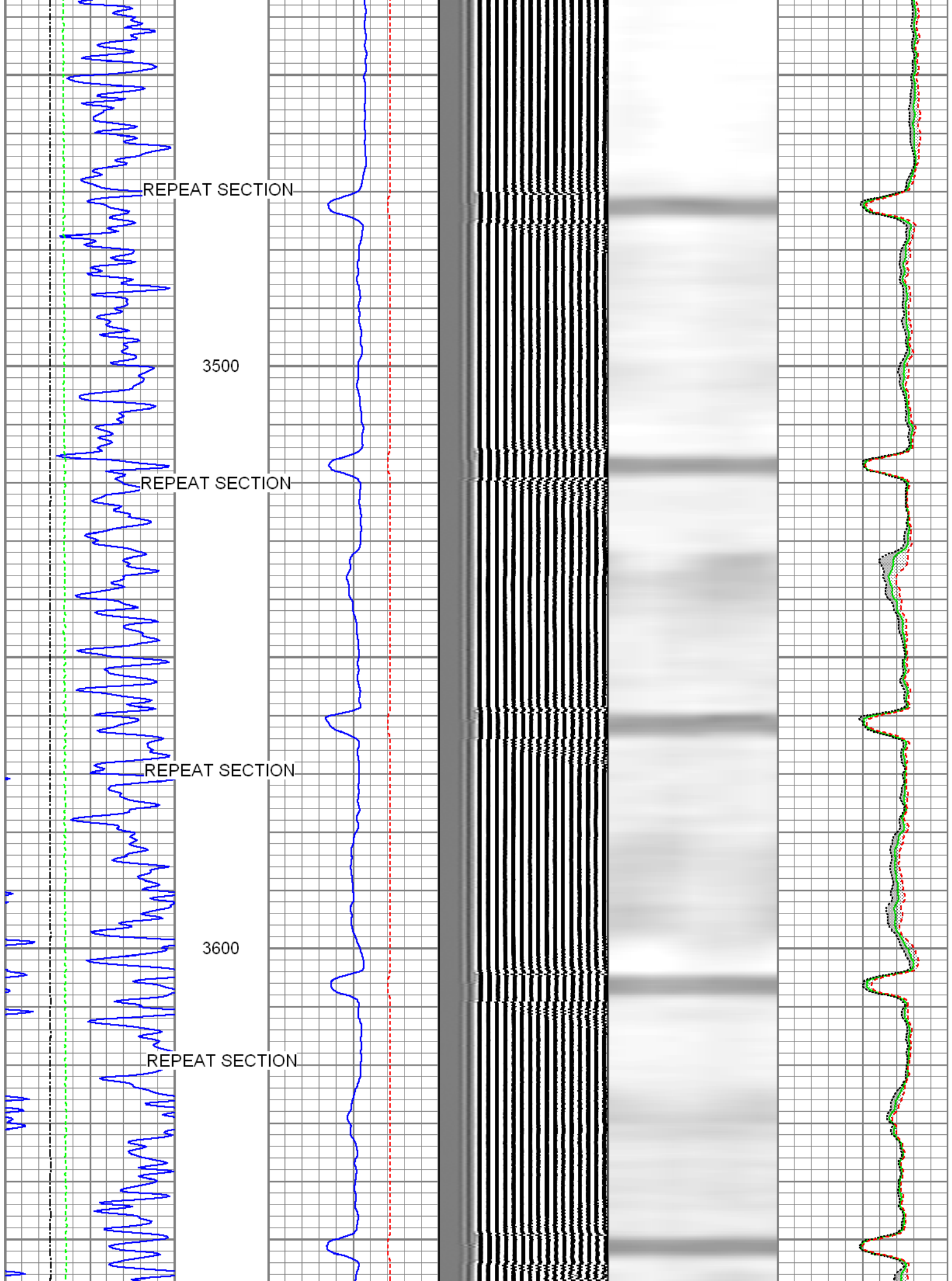


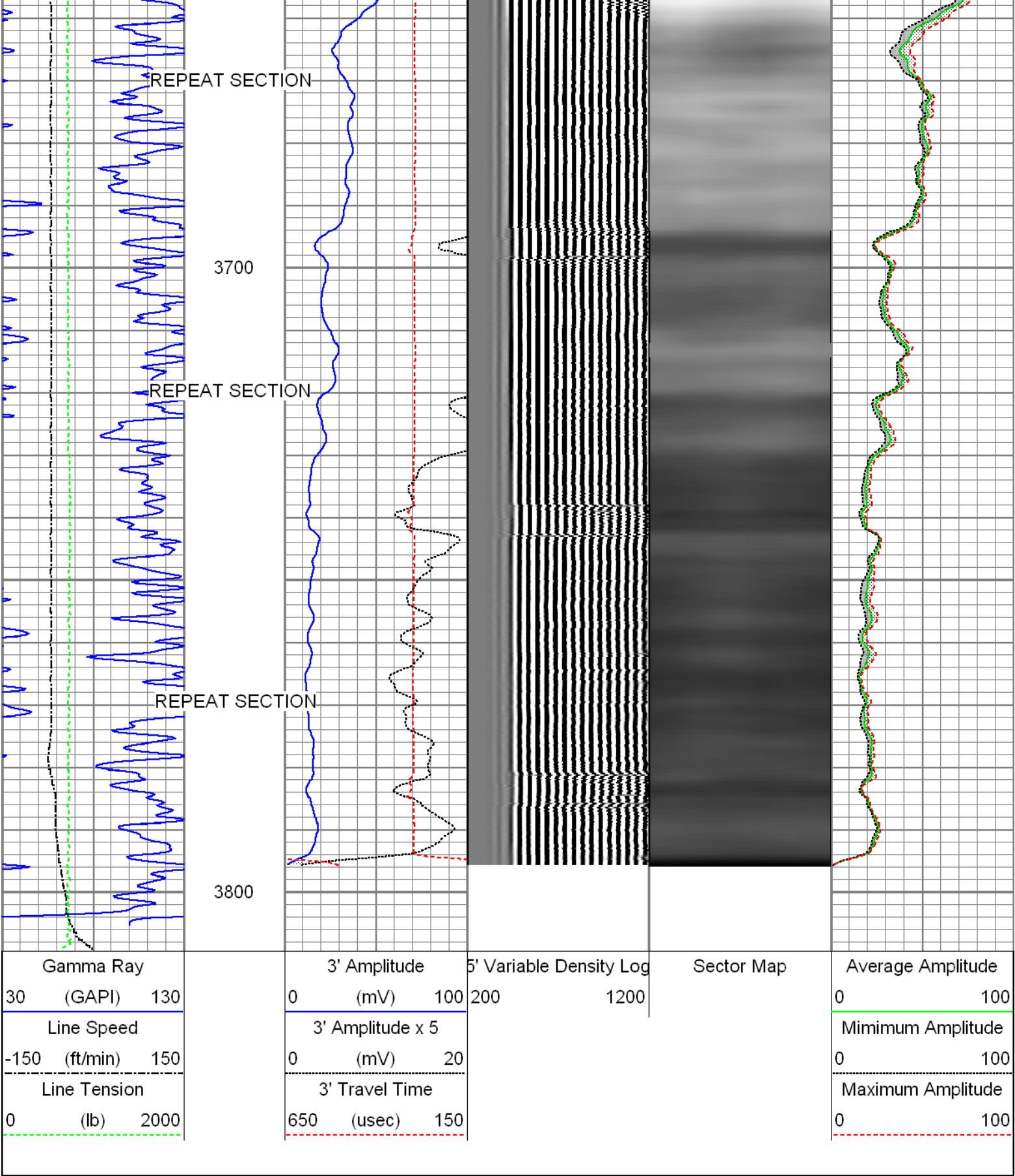
## Repeat Pass

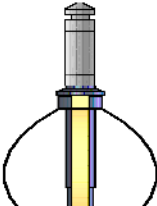
Recorded at -0- PSI Surface Induced Pressure

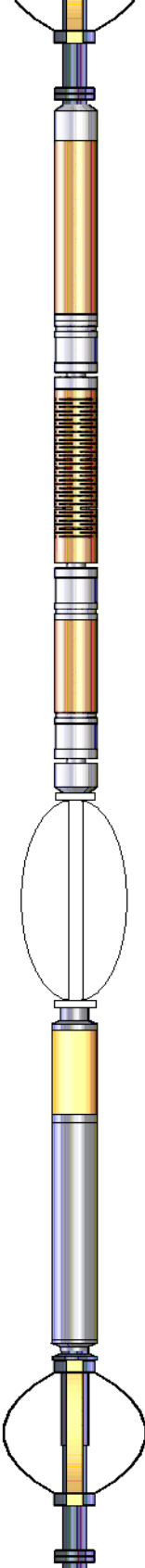
Database File: anadarko uprr 21 pan am I-1.db  
 Dataset Pathname: pass4  
 Presentation Format: rbt007  
 Dataset Creation: Thu Aug 14 10:36:55 2014 by Log 7.0 B1  
 Charted by: Depth in Feet scaled 1:240







Sensor	Offset (ft)	Schematic	Description	Len (ft)	OD (in)	Wt (lb)
			Titan_1_11_16	1.04	1.69	5.00
			Probe II BS Cent	2.88	2.75	10.00

RHeadVolt	19.57		Probe_IL_BS_Cent Probe 2-3/4" Inline Electrical Inline Bowspring Centralizer	2.00	2.75	10.00
Temp	16.69					
WVFS3FT	14.59		Probe_RADII-C-2-3/4" (FW1302-001in7") Probe 2-3/4" Sector Cement Bond Tool with Temperature Probe	9.21	2.75	100.00
WVFCAL	14.59					
WVFS1	14.59					
WVFS2	14.59					
WVFS3	14.59					
WVFS4	14.59					
WVFS5	14.59					
WVFS6	14.59					
WVFS7	14.59					
WVFS8	14.59					
WVFS5FT	13.59					
			Titan_IL_Cent Titan bowspring inline electrical centralizer - 34.75"	2.90	2.75	20.00
CCL	6.59					
DCCL	6.59					
GR	5.25		Probe_CCL_GR-2.75"Digital (FW1211-026) Probe 2-3/4" Digital CCL / Gamma Ray Combined	4.58	2.75	55.00
			Probe_IL_BS_Cent Probe 2-3/4" Inline Electrical Inline Bowspring Centralizer	2.88	2.75	10.00
Dataset: anadarko uprr 21 pan am l-1.db: field/well/run1/pass4 Total Length: 23.49 ft Total Weight: 200.00 lb O.D. 2.75 in						

Calibration Report	
Database File:	anadarko uprr 21 pan am l-1.db
Dataset Pathname:	pass4
Dataset Creation:	Thu Aug 14 10:36:55 2014 by Log 7.0 B1

Gamma Ray Calibration Report
------------------------------



Serial Number: FW1211-026  
Tool Model: 2.75"Digital  
Performed: Tue Jul 09 12:16:46 2013

Calibrator Value: 1.0 GAPI

Background Reading: 0.0 cps  
Calibrator Reading: 1.5 cps

Sensitivity: 0.8000 GAPI/cps

### Segmented Cement Bond Log Calibration Report

Serial Number: FW1302-001in7"  
Tool Model: 2-3/4"

Calibration Casing Diameter: 5.500 in  
Calibration Depth: 410.262 ft

Master Calibration, performed Thu Aug 14 09:39:49 2014:

	Raw (v)		Calibrated (mv)		Results	
	Zero	Cal	Zero	Cal	Gain	Offset
3'	-0.007	0.990	0.800	71.921	71.284	1.329
CAL	1.002	1.001				
5'	-0.007	0.863	0.800	71.921	81.831	1.336
SUM						
S1	-0.005	0.954	0.000	100.000	104.213	0.552
S2	-0.008	0.982	0.000	100.000	101.030	0.802
S3	-0.008	0.987	0.000	100.000	100.429	0.828
S4	-0.008	1.017	0.000	100.000	97.548	0.814
S5	-0.008	1.020	0.000	100.000	97.234	0.800
S6	-0.008	0.994	0.000	100.000	99.730	0.840
S7	-0.008	0.959	0.000	100.000	103.365	0.867
S8	-0.008	0.945	0.000	100.000	104.914	0.875

Internal Reference Calibration, performed Wed Dec 31 17:00:00 1969:

	Raw (v)		Calibrated (v)		Results	
	Zero	Cal	Zero	Cal	Gain	Offset
CAL	0.000	0.000	1.002	1.001	1.000	0.000

Air Zero Calibration, performed Thu Aug 14 09:28:42 2014:

	Raw (v)	Calibrated (v)	Results
	Zero	Zero	Offset
3'	0.000	0.000	0.000
5'	0.000	0.000	0.000
SUM			
S1	0.000	0.000	0.000
S2	0.000	0.000	0.000
S3	0.000	0.000	0.000
S4	0.000	0.000	0.000
S5	0.000	0.000	0.000
S6	0.000	0.000	0.000
S7	0.000	0.000	0.000

S8

0.000

0.000

0.000



Company	Kerr-McGee Oil & Gas Onshore, L.P.
Well	UPRR 21 Pan AM UT L #1
Field	Wattenberg
County	Weld
State	Colorado