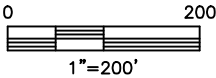
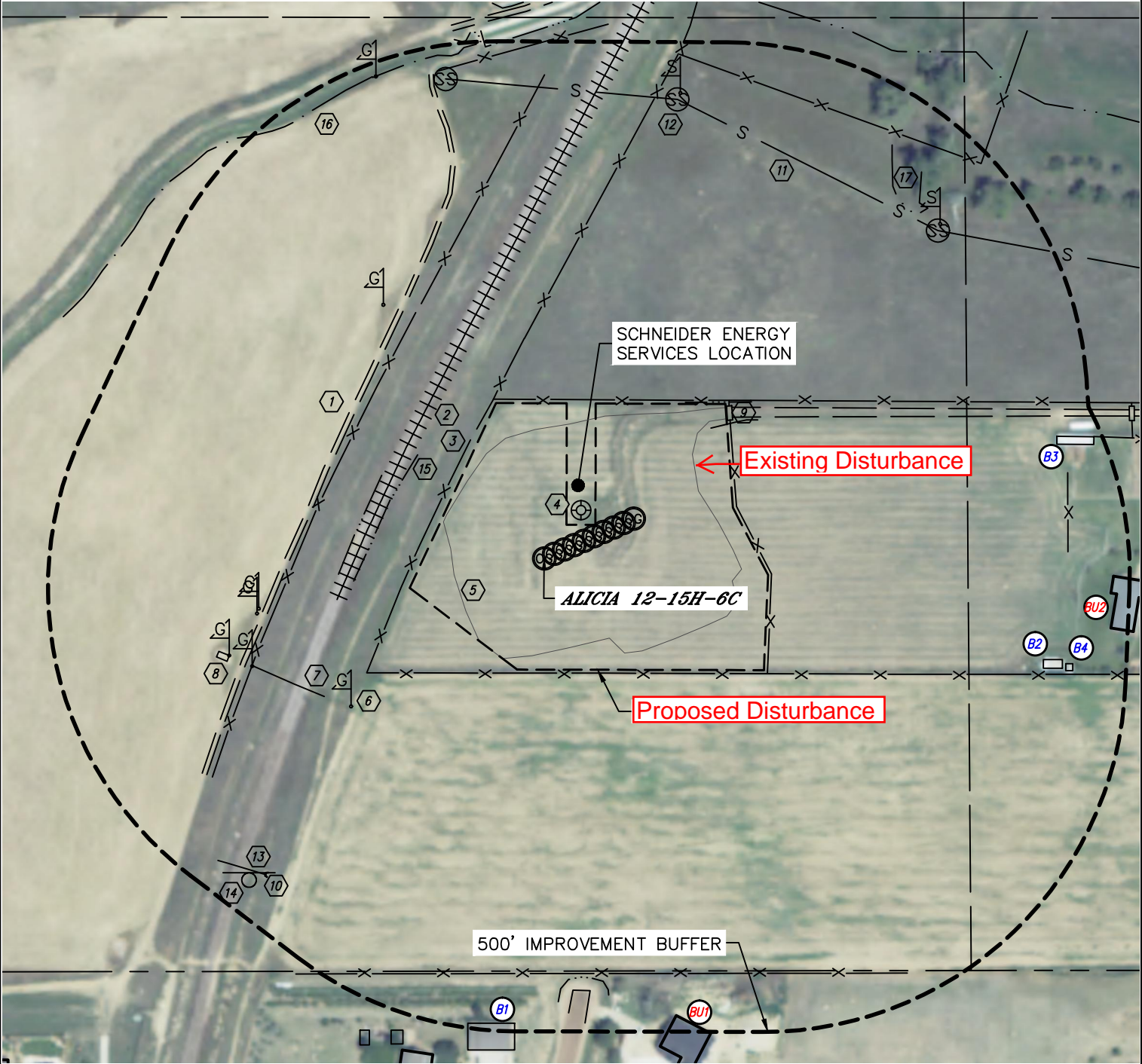




LOCATION DRAWING

ALICIA HZ PAD

SECTION: 12
TOWNSHIP: 1S
RANGE: 68W





LOCATION DRAWING

IMPROVEMENTS:

(MEASURED FROM THE PROPOSED ALICIA 12-15H-6C WELL LOCATION)

- BU1 BUILDING UNIT BU1 ±657' SE, BU2 ±785' E,
- B1 BUILDING B1 ±643' SW, B2 ±704' SE, B3 ±726' NE, B4 ±735' SE,
- 1 ROAD 322' NW, 325' NE, ±589' S (MADISON CT.)
- 2 RAIL ROAD 237' NW
- 3 FENCE 163', 313' & 689' NW, 158' & ±573' S, 219' N, 275' & 718' NE, ±724' E
- 4 EX. WELL HEAD 84' NE
- 5 EX. EDGE OF DISTURBANCE 125' SW, 128' SE, 178' NW, 233' NE
- 6 GAS MARKER 336', 400', 404', 428' & 455' SW, 415' & 706' NW
- 7 GAS LINE 359' SW
- 8 GAS VALVE 455' SW
- 9 CATTLE GUARD 317' NE
- 10 CONCRETE STRUCTURE 577' SW
- 11 SEWER LINE 650' NE
- 12 SEWER MANHOLE 661' & 708' NE, 676' NW
- 13 EXPOSED PIPE 582' SW
- 14 SIGN 596' SW
- 15 DITCH 224', 252', 708' & 711' NW, 291' & 293' NE, 580' S
- 16 CANAL 698' NW
- 17 LOW AREA 696' NE

NEAREST CULTURAL ITEM:

BUILDING ±594' NE, BUILDING UNIT ±657' SE, HIGH OCCUPANCY BUILDING UNIT ±1903' SW,
DESIGNATED OUTSIDE ACTIVITY AREA 5280'+, PUBLIC ROAD ±589' S (MADISON CT),
ABOVE GROUND UTILITY ±1097' SE, RAILROAD ±237' NW, PROPERTY LINE ±163' NW

(DISTANCES MEASURED FROM THE CENTER OF THE PROPOSED WELL HEAD OR LIMITS OF THE
PROPOSED PRODUCTION FACILITY, MLVT CLOSEST TO THE REFERENCED CULTURAL ITEM)

SHEET 2 OF 2

DATE: 8/26/2014
PROJECT#: 2013026