

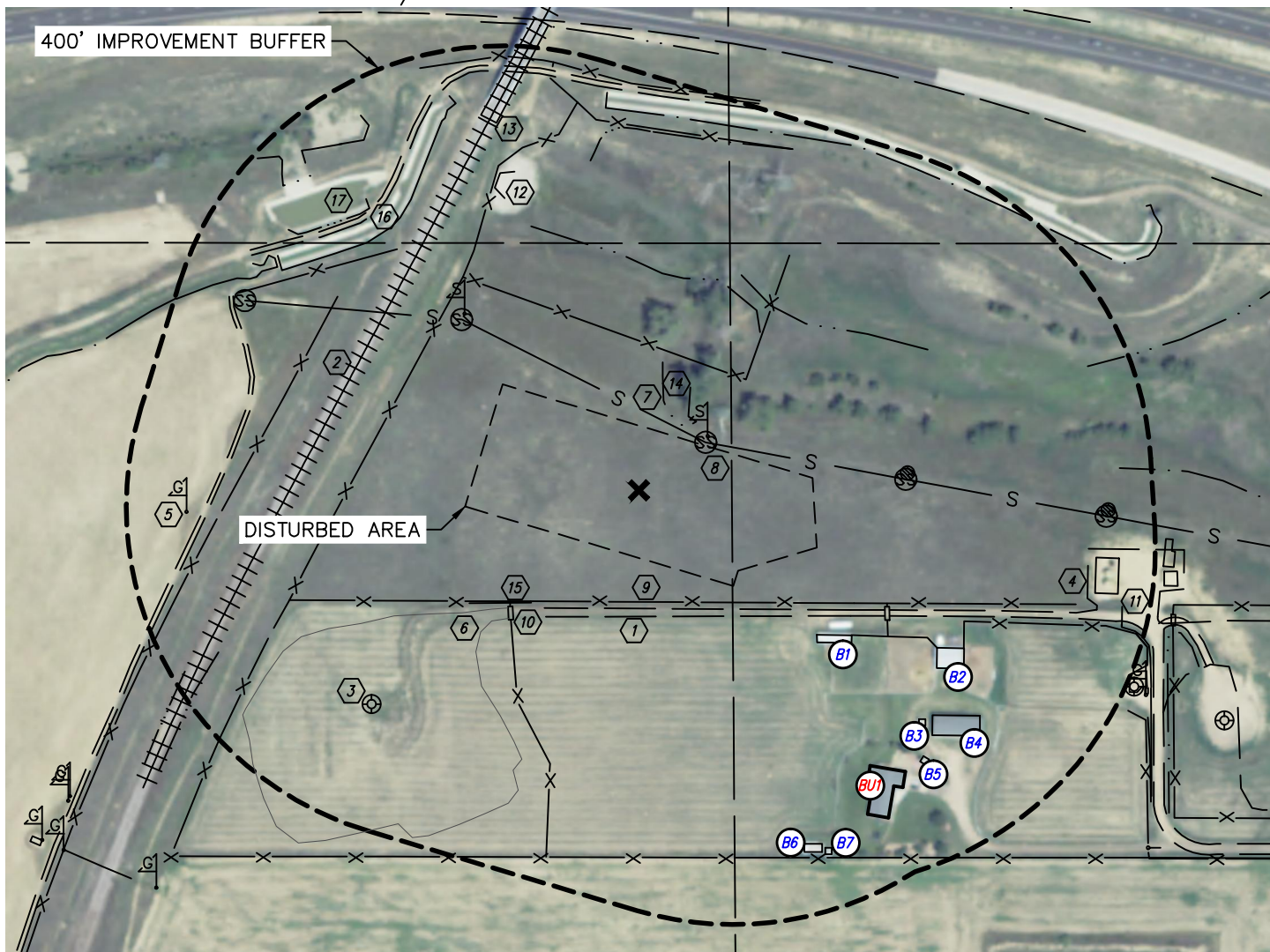


Lat40°, Inc. 1635 Foxtrail Drive, Suite 325 Loveland, CO 970-776-3321

## LOCATION DRAWING

ALICIA/ AFTON PRODUCTION FACILITY PAD

SECTION: 12  
TOWNSHIP: 1S  
RANGE: 68W



### REFERENCE POINT LOCATION:

LAT: 39.97458°N

LONG: 104.94556°W

ELEV: 5139'

PDOP: 1.8

DATE: 8/7/2014

OPERATOR: BRIAN ROTTINGHAUS

1/41/4: SW1/4SE1/4

FSL: 952'

FEL: 1480'

DISTANCE TO WELL: 460' SW

### ASSOCIATED NEW WELLS:

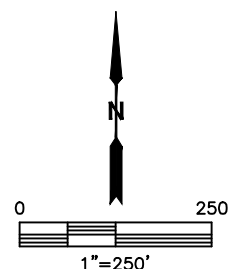
ALICIA 12-15H-6C  
ALICIA 12-15H-1N  
ALICIA 12-15H-5N  
ALICIA 12-15H-2N  
ALICIA 12-15H-4C  
ALICIA 12-15H-3N  
ALICIA 12-15H-7NB  
ALICIA 12-15H-8NB  
ALICIA 12-15H-9NB  
ALICIA 12-15H-10NB  
AFTON 12-16H-4

### ASSOCIATED EXISTING WELLS:

N/A

### LEGEND

**X** - REFERENCE POINT  
ALL DISTANCES ARE APPROXIMATE.



**SHEET 1 OF 2**

DATE: 8/22/2013  
PROJECT#: 2013026



Lat40°, Inc. 1635 Foxtrail Drive, Suite 325 Loveland, CO 970-776-3321

## LOCATION DRAWING

ALICIA/ AFTON PRODUCTION FACILITY PAD

SECTION: 12  
TOWNSHIP: 1S  
RANGE: 68W

### IMPROVEMENTS:

(MEASURED FROM THE PROPOSED PRODUCTION FACILITY REFERENCE POINT LOCATION)

- BU1 BUILDING UNIT BU1 531' SE
- B1 BUILDING B1 339' SE, B2 498' SE, B3 534' SE, B4 546' SE, B5 575' SE, B6 577' SE, B7 595' SE
- 1 ACCESS ROAD 175' S, 565' & 586' NW
- 2 RAILROAD 454' NW
- 3 EX. WELLHEAD 506' SW
- 4 EX. PRODUCTION EQUIPMENT (SCHNEIDER) 682' SE
- 5 GAS MARKER 669' W
- 6 EX. EDGE OF DISTURBANCE 254' SW, 669' SE
- 7 SEWER LINE 108' NE
- 8 SEWER MANHOLE 121' NE, 363' & 646' NW, 394' & 691' E
- 9 FENCE 165' & ±542' S, 208', 531' & 594' NE, 251' SW, 379', 504' & 527' NW, 403' & 518' SE
- 10 CATTLE GUARD 253' SW, 402' SE
- 11 CULVERT 734' SE
- 12 TUNNEL 495' & 567' NW
- 13 BRIDGE ±582 NW
- 14 LOW AREA 115' & 294' NE, 671' NW
- 15 DITCH 230', 665' & 772' SW, 492' N, 687' NE, 741' SE
- 16 CANAL 534' NW
- 17 POND 576' NW

### NEAREST CULTURAL ITEM:

BUILDING ±125' SE, BUILDING UNIT ±331' SE, HIGH OCCUPANCY BUILDING UNIT ±2232' SW,  
DESIGNATED OUTSIDE ACTIVITY AREA 5280'+, PUBLIC ROAD (E-470) ±541' N,  
ABOVE GROUND UTILITY ±672' SE, RAILROAD ±202' NW, PROPERTY LINE ±27' S

(DISTANCES MEASURED FROM THE CENTER OF THE PROPOSED WELL HEAD OR LIMITS OF THE  
PROPOSED PRODUCTION FACILITY, MLVT CLOSEST TO THE REFERENCED CULTURAL ITEM)

***SHEET 2 OF 2***

DATE: 8/22/2013  
PROJECT#: 2013026