

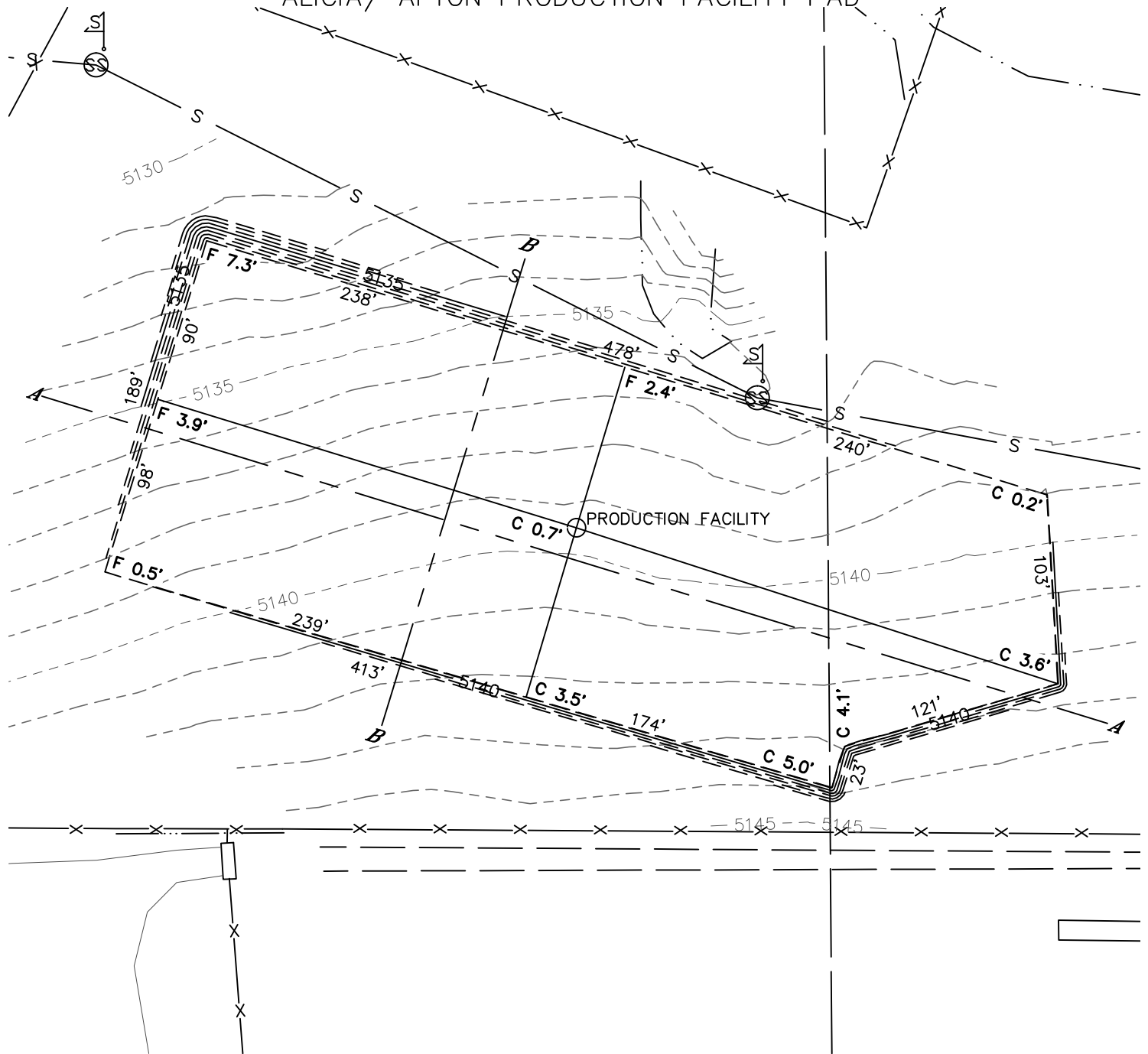


Lat40°, Inc. 1635 Foxtrail Drive, Suite 325 Loveland, CO 970-776-3321

CUT & FILL DIAGRAM

SECTION: 12
TOWNSHIP: 1S
RANGE: 68W

ALICIA/ AFTON PRODUCTION FACILITY PAD



OPERATOR: MENDELL FINISTERRE II, LLC.
LOCATION: 952' FSL, 1480' FEL
EXISTING ELEV=5139.5'
PROPOSED ELEV=5138.8'
DISTURBANCE= 2.2 ACRES

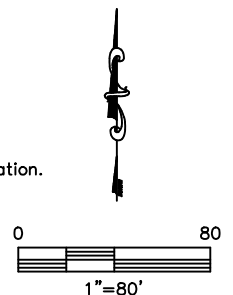
ESTIMATED EARTHWORK:
TOPSOIL= 3588.6 CY
CUT= 3652.9 CY
FILL= 3647.8 CY
STOCKPILE:
EXCESS= 5.1 CY

NOTE:

- 1) Ground elevations are based on an observed GPS elevation (NAVD 1988 DATUM).
- 2) No allowance has been made for soil expansion or compaction.
- 3) Proposed elevation does not account for top soil removal.
- 4) Top soil volume assumes 12" depth across entire location.
- 5) Fill slopes 2:1
- 6) Cut slopes 1.5:1

LEGEND

EX. CONTOUR	---
PRO. CONTOUR	---
FILL AREA	



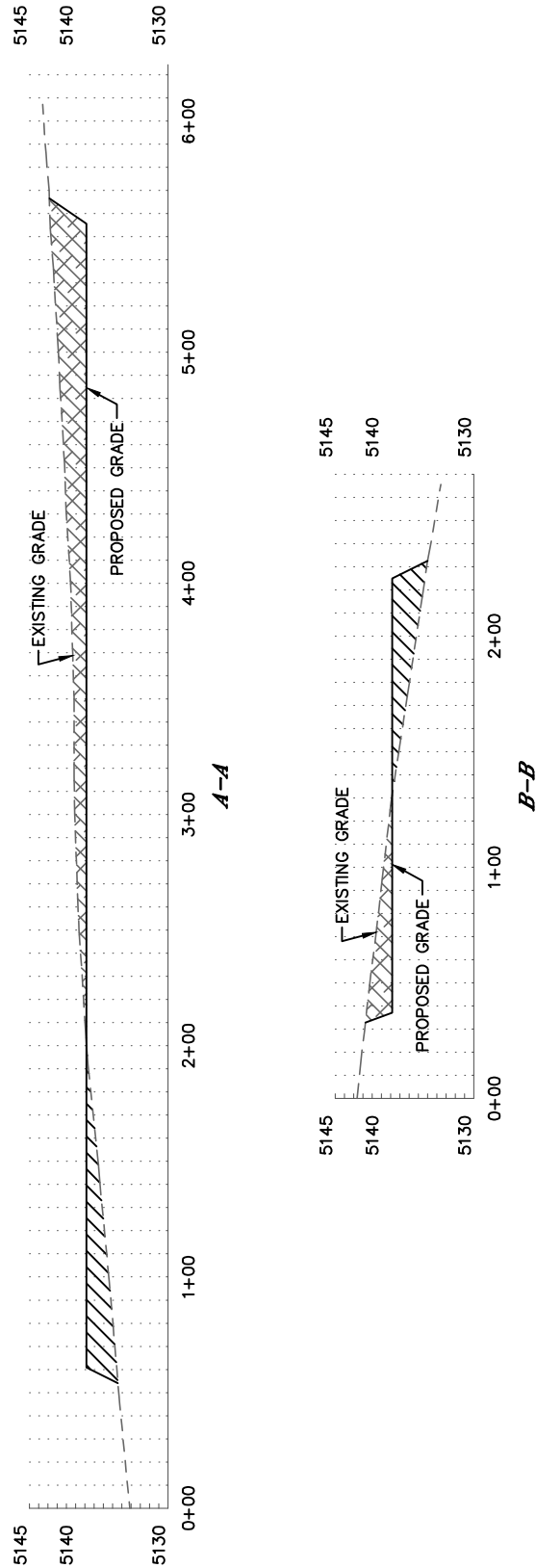
DATE: 8/22/2013
PROJECT#: 2013026



Lat40°, Inc. 1635 Foxtrail Drive, Suite 325 Loveland, CO 970-776-3321

CROSS SECTION DIAGRAM
ALICIA/ AFTON PRODUCTION FACILITY PAD

SECTION: 12
TOWNSHIP: 1S
RANGE: 68W



HORIZONTAL SCALE: 1"=80', VERTICAL SCALE: 1"=20'