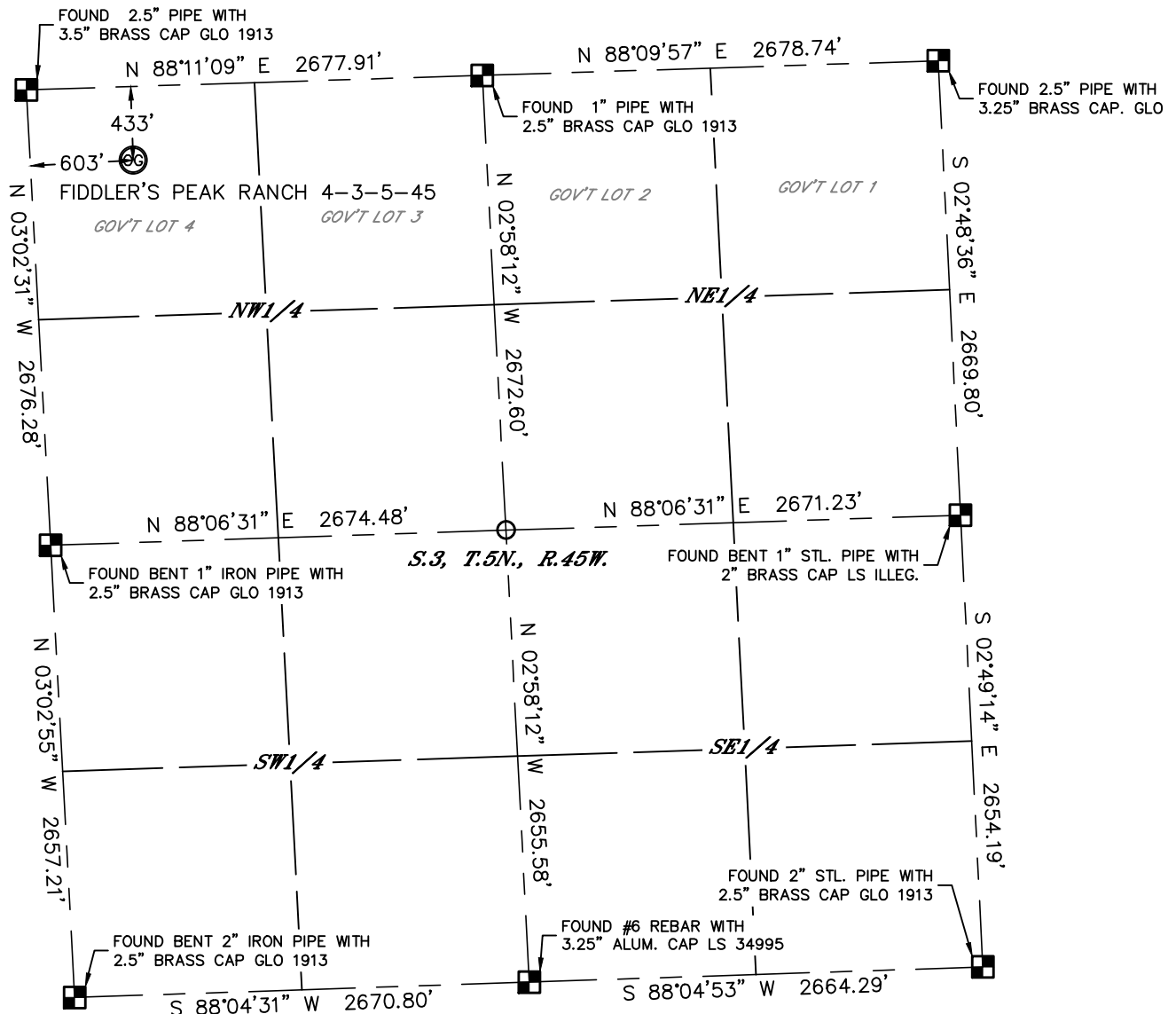


Lat40°, Inc. 1635 Foxtrail Drive, Suite 325 Loveland, CO 970-776-3321

# WELL LOCATION CERTIFICATE

THIS MAP DOES NOT REPRESENT A BOUNDARY SURVEY

SECTION: 3  
TOWNSHIP: 5N  
RANGE: 45W





In accordance with a request from Michelle Lewis with OMIMEX PETROLEUM, INC. Lat40", Inc. has determined the surface location of the FIDDLER'S PEAK RANCH 4-3-5-45 to be 433' from the NORTH line and 603' from the WEST line as measured at right angles from the section lines of Section 3, Township 5 North, Range 45 West of the Sixth Principal Meridian, County of Yuma, State of Colorado.

I hereby state that this Well Location Certificate was prepared by me, or under my direct supervision, that the fieldwork was completed on 8/15/2014, for and on behalf of OMIMEX PETROLEUM, INC. That this is not a Land Survey Plat or an Improvement Survey Plat, and that it is not to be relied upon for establishment of fence, building, or other future improvement lines.



## SURFACE LOCATION

LAT: 40.43846°N  
LONG: 102.37594°W  
PDOP: 1.9  
ELEV: 3862'  
1/4,1/4: NWNW

NOTE:

- 1) Bearings shown are Grid Bearings of the Colorado State Plane Coordinate System, North Zone, North American Datum 1983. The lineal dimensions as contained herein are based upon the "U.S. Survey Foot."
- 2) Ground elevations are based on an observed GPS elevation (NAVD 1988 DATUM).
- 3) IMPROVEMENTS: See LOCATION DRAWING for all visible improvements within 500' of disturbed area.
- 4) SURFACE USE: IRRIGATED CROP LAND
- 5) INSTRUMENT OPERATOR: ADAM BEAUPREZ
- 6) NEAREST CULTURAL ITEMS:
- BUILDING:  $\pm 236'$  SW
- BUILDING UNIT:  $\pm 1670'$  NW
- HIGH OCCUPANCY BUILDING UNIT:  $+5280'$
- DESIGNATED OUTSIDE ACTIVITY AREA:  $+5280'$
- PUBLIC ROAD:  $\pm 415'$  N
- ABOVEGROUND UTILITY:  $\pm 202'$  NW
- RAILROAD:  $+5280'$
- PROPERTY LINE:  $\pm 433'$  N
- LEGEND
-  = ALIQUOT MONUMENT AS DE
-  = CALCULATED POSITION

### LEGEND

-  = ALIQUOT MONUMENT AS DESCRIBED  
 = CALCULATED POSITION

Kyle E. Rutz—On behalf of Lat40°, Inc.  
Colorado Licensed Professional Land Surveyor No. 38307

DATE: 8/21/2014  
PROJECT#: 2014139

