

# H & H Wireline Service Inc

P.O. Box 899  
Flora Vista NM 87415

Phone: 505-327-2364  
Fax: 505-334-5438  
E-mail: h-hwireline@gobrainstorm.net

## Pressure Test Report

### COMPANY INFORMATION

Company Name  
Representative  
Phone  
Fax  
Address

CHEVRON  
DANNY MONTOYA

05-067-07615

E-Mail Address  
Service Company

H & H WIRELINE SERVICE INC.

### WELL INFORMATION

Well Name  
Well Location  
Field and Pool  
Status (Oil, Gas, Water, Injection)  
Perforated Intervals  
Mid-point of Perforated Intervals (MPP)  
Drilling Rig Number  
Elevations  
    Kelly Bushing (KB)  
    Casing Flange (CF)  
    KB-CF  
    Ground Level  
Plug Back Total Depth  
Total Depth  
Production Casing  
Production Tubing

FEDERAL # 34-1

FRUITLAND COAL  
GAS

Observation Well

2.875

### TEST INFORMATION

Type of Test  
Date(s) of Test  
Dead-weight Gauge Tubing Pressure  
Dead-weight Gauge Casing Pressure  
Shut-in Date (Duration)  
Date / Time on Bottom  
Date / Time off Bottom

BHP SURVEY  
07/03/2014  
0  
0  
07/03/2014 @ 12:10  
07/03/2014 @ 12:15

Probe Serial Number  
Probe Offset from End of Tool String  
Run Depth at Probe Pressure Port

2190'GL

### PRESSURE TEST RESULTS

Maximum Recorded Probe Pressure  
Maximum Recorded Probe Temperature  
Final Buildup Pressure  
Gradient Survey Information  
    Extrapolated Pressure to MPP  
    Final Gradient at Depth  
Job Number

700.4 psig  
100.5 deg F  
700.4  
2190'GL



Company Name CHEVRON  
Well Name FEDERAL # 34-1  
Type of Test BHP SURVEY  
Date(s) of Test 07/03/2014

---

## **PROBE INFORMATION**

Probe Serial Number

Model

Pressure

Calibrated Pressure Range

Accuracy

Resolution

Temperature

Calibrated Temperature Range

Accuracy

Resolution

Calibration File Used for Reports

## **PROGRAMMING DETAILS**

<u>Step</u>	<u>Sample Mode</u>	<u>Period</u>	<u>Duration</u>	<u>Comment</u>
-------------	--------------------	---------------	-----------------	----------------

Program Start Time  
Program End Time  
Total Samples Taken  
Usage for this Test  
Generic Data File Name



Company Name	CHEVRON
Well Name	FEDERAL # 34-1
Type of Test	BHP SURVEY
Date(s) of Test	07/03/2014

---

## **COMMENTS**

Reported By

H & H WIRELINE SERVICE INC.

RUN BHP SURVEY TO 2190'GL, POOH RIG DOWN DRIVE TO NEXT LOCATION.



Company Name CHEVRON  
Well Name FEDERAL # 34-1  
Type of Test BHP SURVEY  
Date(s) of Test 07/03/2014

## **Pressure vs. Depth**

Probe Serial Number

Stop Time From	Stop Time To	Depth (ft)	Pressure (psig)	Gradient (psi/ft)	(deg F)	(deg F/ft)
11:50	11:55	0.000	-1.954	-	73.310	-
11:57	12:02	1000.000	186.859	0.1888	69.944	-0.0034
12:03	12:08	1600.000	445.592	0.4312	77.396	0.0124
12:10	12:15	2190.000	700.126	0.4314	92.912	0.0263

Extrapolated to MPP:

Depth  
(ft)

Pressure  
(psig)

(deg F)

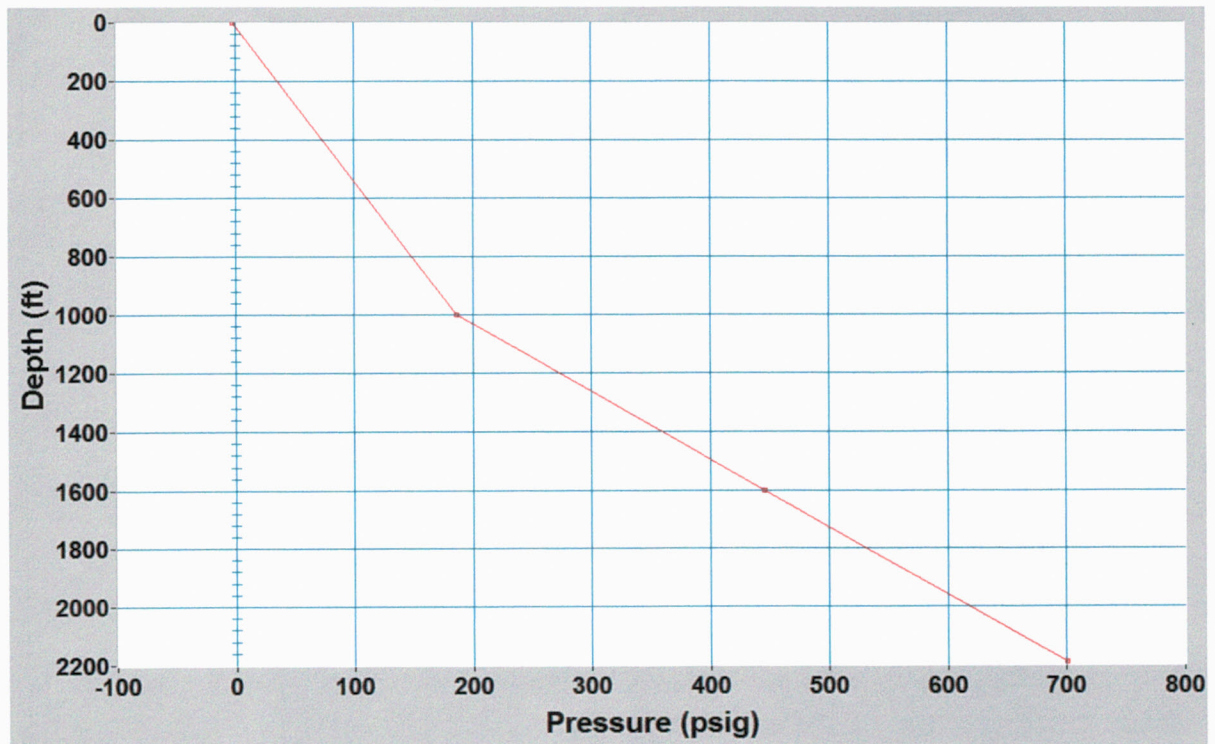
0.000



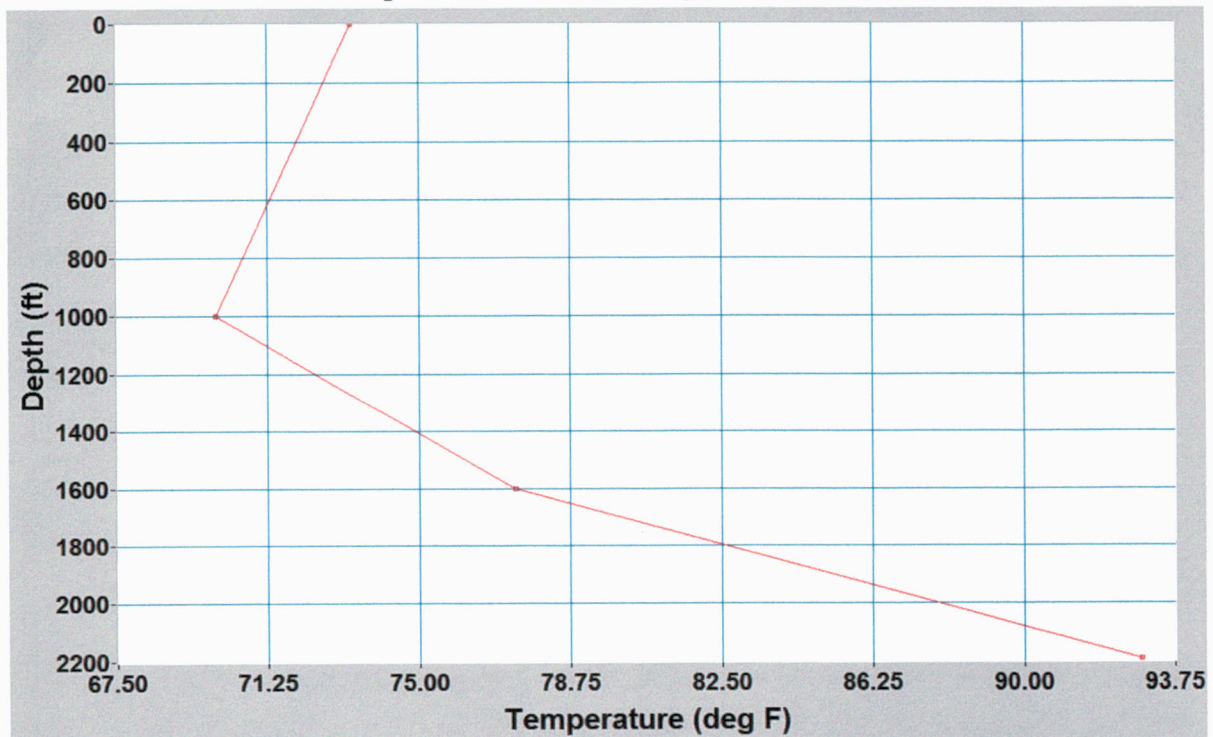
Company Name CHEVRON  
Well Name FEDERAL # 34-1  
Type of Test BHP SURVEY  
Date(s) of Test 07/03/2014

Probe Serial Number

## Depth vs. Pressure



## Depth vs. Temperature



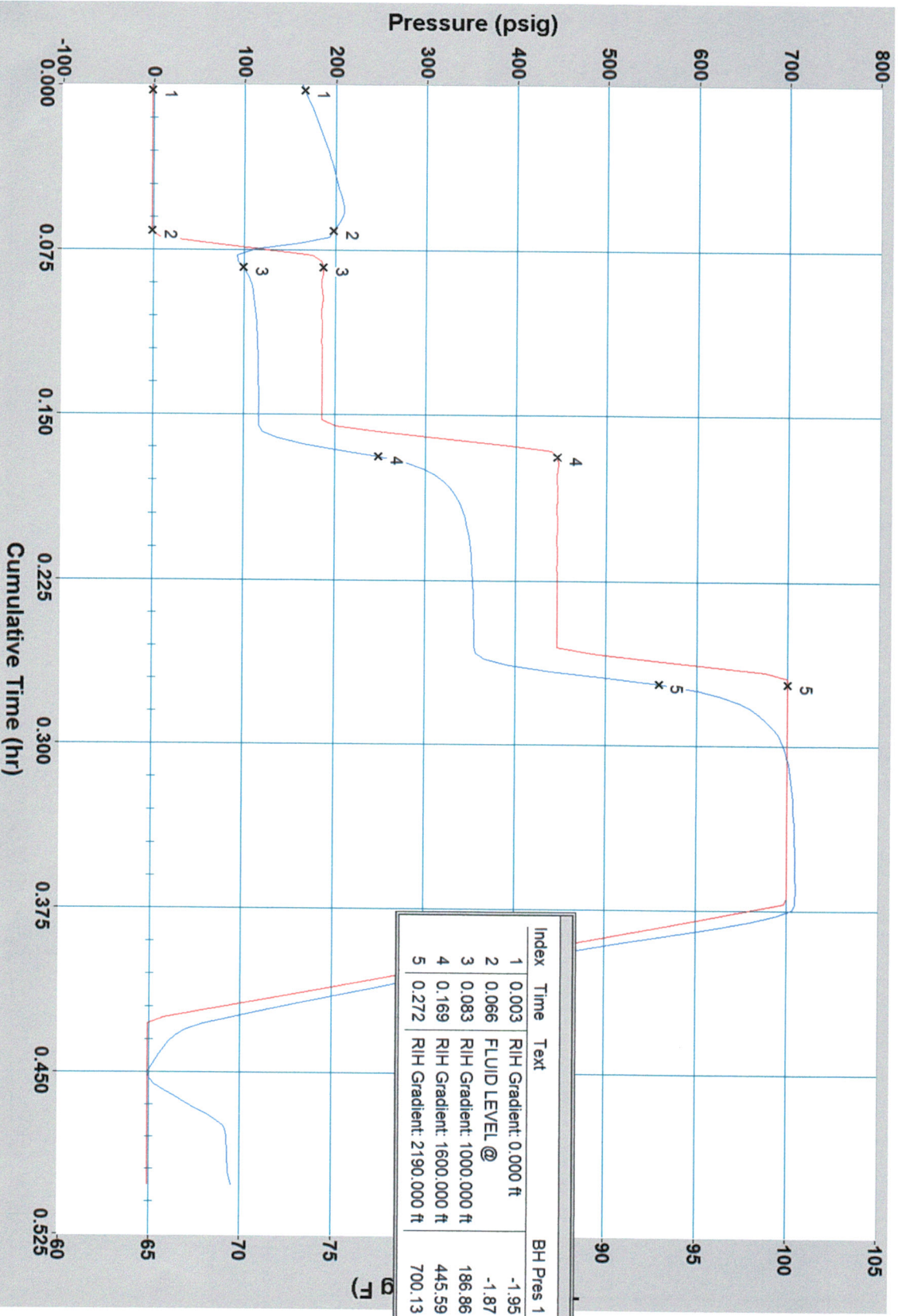




Company Name  
Well Name  
Type of Test  
Date(s) of Test

CHEVRON  
FEDERAL # 34-1  
BHP SURVEY  
07/03/2014

# FEDERAL # 34-1



Index	Time	Text	BH Pres 1	BH Temp 1
1	0.003	RIH Gradient: 0.000 ft	-1.95	73.31
2	0.066	FLUID LEVEL @	-1.87	74.89
3	0.083	RIH Gradient: 1000.000 ft	186.86	69.94
4	0.169	RIH Gradient: 1600.000 ft	445.59	77.40
5	0.272	RIH Gradient: 2190.000 ft	700.13	92.91



Company Name CHEVRON  
Well Name FEDERAL # 34-1  
Type of Test BHP SURVEY  
Date(s) of Test 07/03/2014

Date	Time	Cum.Time BH1	BH Pres 1	BH Temp 1
		hr	psig	deg F
2012/06/27	16:15:00	0.0000	-1.938	73.148
RIH Gradient: 0.000 ft				
2012/06/27	16:15:09	0.0025	-1.954	73.310
2012/06/27	16:15:29	0.0081	-1.977	73.598
2012/06/27	16:15:59	0.0164	-1.999	74.012
2012/06/27	16:16:29	0.0247	-1.994	74.390
2012/06/27	16:17:09	0.0358	-2.016	74.858
2012/06/27	16:17:39	0.0442	-2.002	75.092
2012/06/27	16:18:09	0.0525	-2.013	75.398
2012/06/27	16:18:39	0.0608	-1.961	75.344
FLUID LEVEL @				
2012/06/27	16:18:59	0.0664	-1.874	74.894
2012/06/27	16:19:09	0.0692	6.889	74.678
2012/06/27	16:19:39	0.0775	174.866	69.584
RIH Gradient: 1000.000 ft				
2012/06/27	16:19:59	0.0831	186.859	69.944
2012/06/27	16:20:09	0.0858	187.119	70.160
2012/06/27	16:20:39	0.0942	185.972	70.484
2012/06/27	16:21:09	0.1025	185.289	70.628
2012/06/27	16:21:39	0.1108	186.313	70.700
2012/06/27	16:22:09	0.1192	185.653	70.736
2012/06/27	16:22:29	0.1247	186.060	70.772
2012/06/27	16:22:59	0.1331	185.785	70.790
2012/06/27	16:23:29	0.1414	185.785	70.808
2012/06/27	16:23:59	0.1497	185.879	70.826
2012/06/27	16:24:29	0.1581	253.568	71.042
2012/06/27	16:24:59	0.1664	439.131	75.272
RIH Gradient: 1600.000 ft				
2012/06/27	16:25:09	0.1692	445.592	77.396
2012/06/27	16:25:29	0.1747	445.995	79.898
2012/06/27	16:25:59	0.1831	445.753	81.356
2012/06/27	16:26:39	0.1942	445.436	82.112
2012/06/27	16:27:09	0.2025	445.649	82.364
2012/06/27	16:27:39	0.2108	445.804	82.508
2012/06/27	16:28:09	0.2192	445.589	82.598
2012/06/27	16:28:39	0.2275	445.737	82.652
2012/06/27	16:29:09	0.2358	445.663	82.688
2012/06/27	16:29:39	0.2442	445.685	82.724
2012/06/27	16:30:09	0.2525	445.713	82.742
2012/06/27	16:30:39	0.2608	546.222	83.336
2012/06/27	16:31:09	0.2692	700.061	90.050
RIH Gradient: 2190.000 ft				
2012/06/27	16:31:19	0.2719	700.126	92.912
2012/06/27	16:31:39	0.2775	699.939	96.368
2012/06/27	16:32:09	0.2858	700.100	98.438
2012/06/27	16:32:39	0.2942	700.190	99.446
2012/06/27	16:33:09	0.3025	700.338	99.878
2012/06/27	16:33:39	0.3108	700.318	100.148
2012/06/27	16:33:59	0.3164	700.371	100.238
2012/06/27	16:34:29	0.3247	700.348	100.328
2012/06/27	16:34:59	0.3331	700.383	100.400
2012/06/27	16:35:29	0.3414	700.374	100.436
2012/06/27	16:35:59	0.3497	700.384	100.472
2012/06/27	16:36:29	0.3581	700.381	100.472

Date	Time	Cum.Time BH1	BH Pres 1	BH Temp 1
		hr	psig	deg F
2012/06/27	16:36:59	0.3664	700.373	100.508
2012/06/27	16:37:29	0.3747	662.731	100.310
2012/06/27	16:38:09	0.3858	522.404	94.046
2012/06/27	16:38:39	0.3942	415.990	88.016
2012/06/27	16:39:09	0.4025	309.028	82.598
2012/06/27	16:39:39	0.4108	200.207	77.468
2012/06/27	16:40:09	0.4192	89.825	72.536
2012/06/27	16:40:39	0.4275	-1.639	67.964
2012/06/27	16:41:09	0.4358	-1.662	66.020
2012/06/27	16:41:39	0.4442	-1.706	65.318
2012/06/27	16:42:09	0.4525	-1.701	64.994
2012/06/27	16:42:39	0.4608	-1.787	66.398
2012/06/27	16:43:09	0.4692	-1.801	68.216
2012/06/27	16:43:39	0.4775	-1.870	69.242
2012/06/27	16:44:09	0.4858	-1.914	69.314
2012/06/27	16:44:39	0.4942	-1.935	69.332