

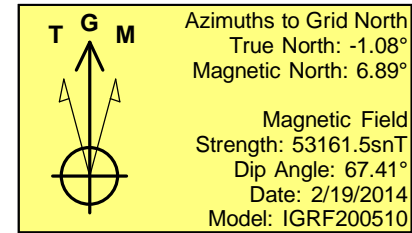
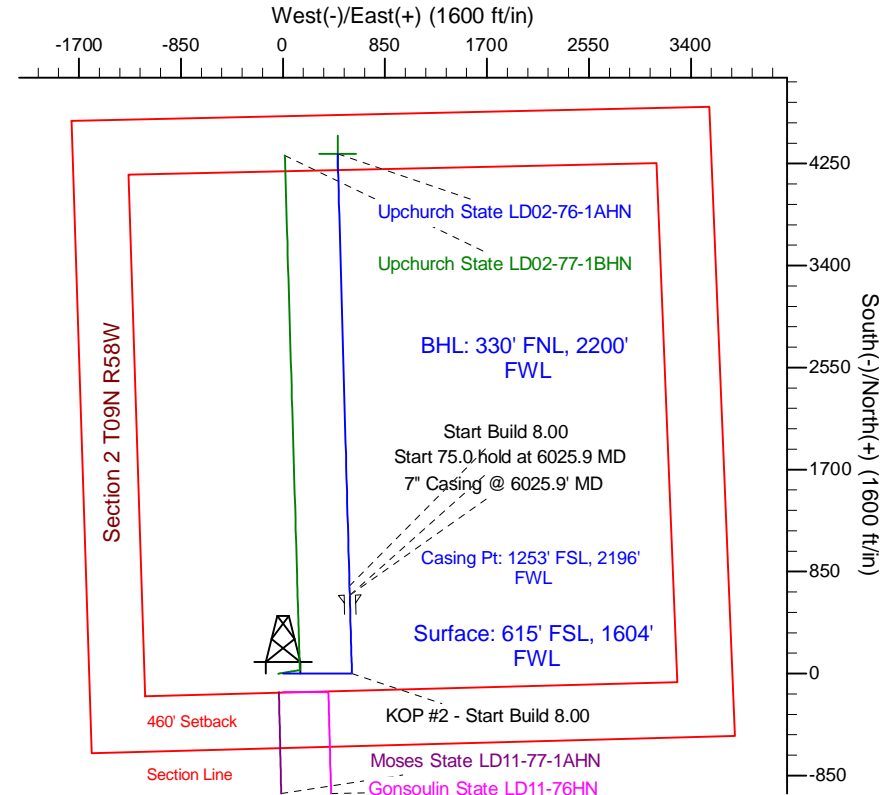
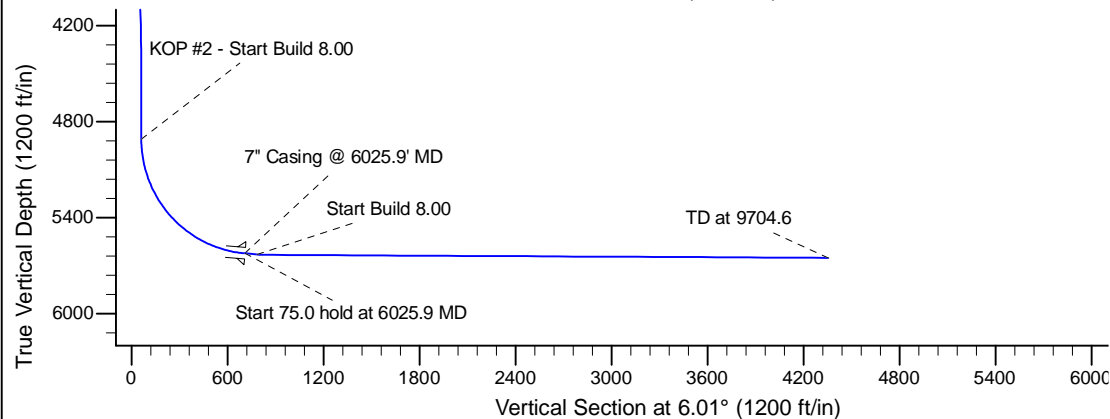
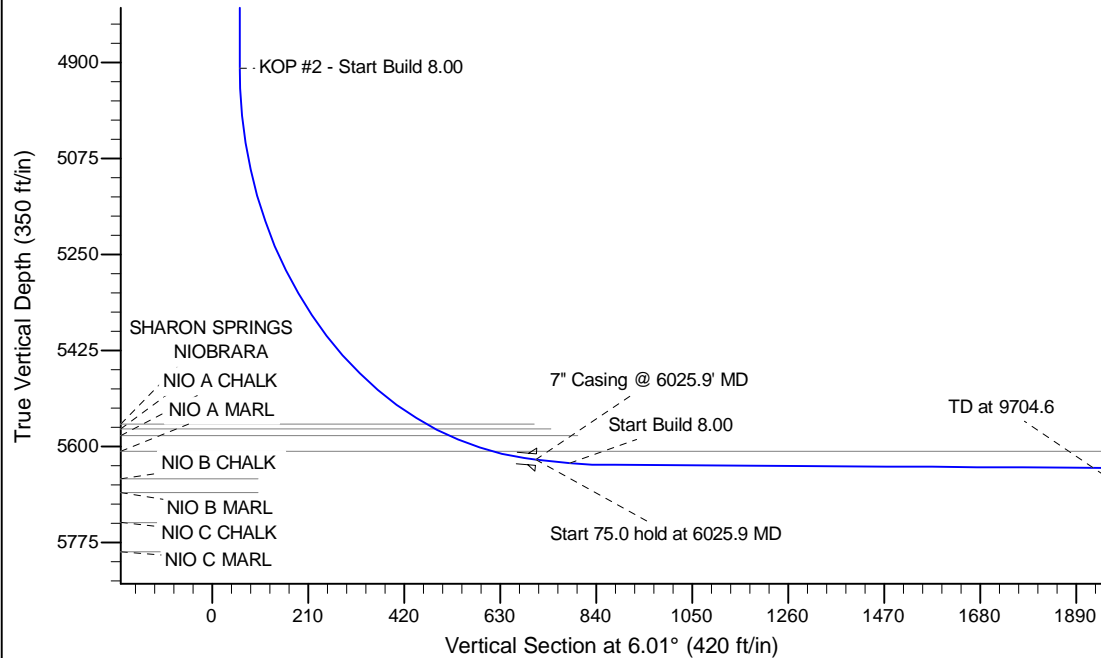
Project: Wattenberg Field
Site: LD (Sec.2-T09N-R58W) Weld County, CO
Well: Upchurch State LD02-76-1AHN
Wellbore: Original Drilling
Design: APD - Rev 2

Northern Region Drilling - Working

Geodetic System: US State Plane 1983
Datum: North American Datum 1983
Ellipsoid: GRS 1980
Zone: Colorado Northern Zone
System Datum: Mean Sea Level

SECTION DETAILS

Sec	MD	Inc	Azi	TVD	+N/-S	+E/-W	Dleg	TFace	V Sect	Target
1	0.0	0.00	0.00	0.0	0.0	0.0	0.00	0.00	0.0	
2	1200.0	0.00	0.00	1200.0	0.0	0.0	0.00	0.00	0.0	
3	1761.3	11.23	90.00	1757.8	0.0	54.8	2.00	90.00	5.7	
4	4151.6	11.23	90.00	4102.2	0.0	520.2	0.00	0.00	54.5	
5	4712.9	0.00	0.00	4660.0	0.0	575.0	2.00	180.00	60.2	
6	4963.4	0.00	0.00	4910.5	0.0	575.0	0.00	0.00	60.2	
7	6025.9	85.00	358.43	5624.0	653.5	557.0	8.00	358.43	708.3	
8	6100.9	85.00	358.43	5630.5	728.2	555.0	0.00	0.00	782.3	
9	6159.7	89.70	358.43	5633.2	786.9	553.4	8.00	0.00	840.5	
0	9704.6	89.70	358.43	5651.8	4330.4	456.0	0.00	0.00	4354.3	Upchurch State LD02-76-1AHN BHL 330'FNL, 2200'FWL



WELL DETAILS: Upchurch State LD02-76-1AHN

Ground Level: 4742.0			
0.0	0.0	1529499.22	3461069.43
0.0	0.0	40.774980	-103.835210

Plan: APD - Rev 2 (Upchurch State LD02-76-1AHN/Original Drilling)

Created By: Shailey Jewell Date: 14:47, August 27 2014
Checked: _____ Date: _____
Reviewed: _____ Date: _____
Approved: _____ Date: _____