

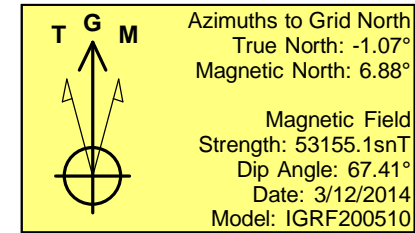
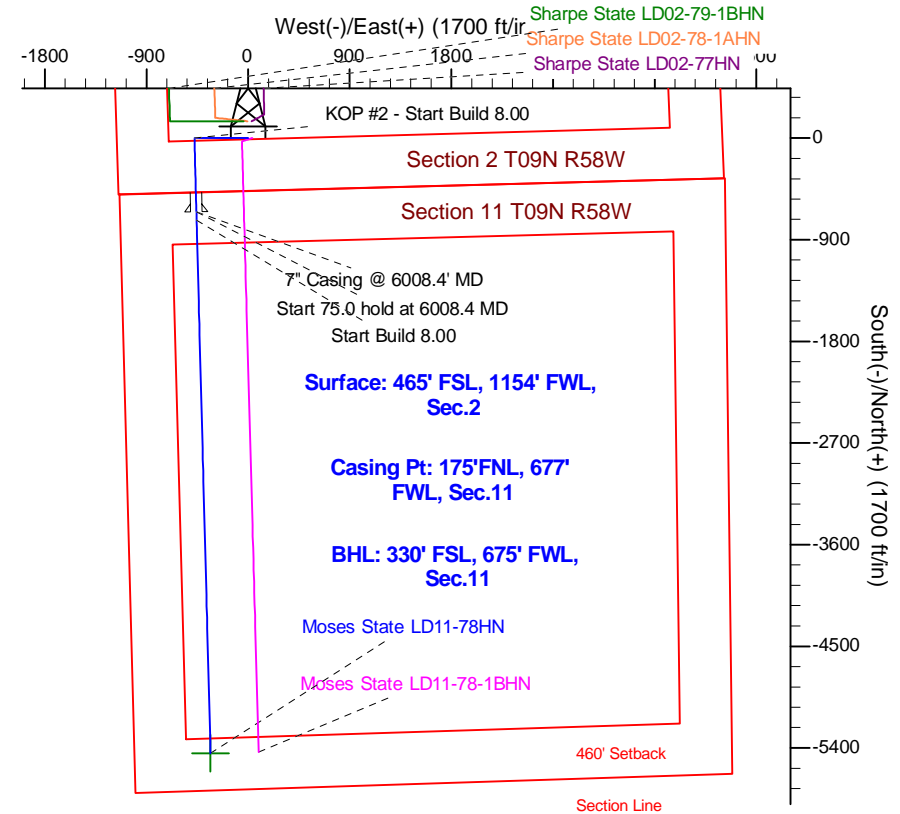
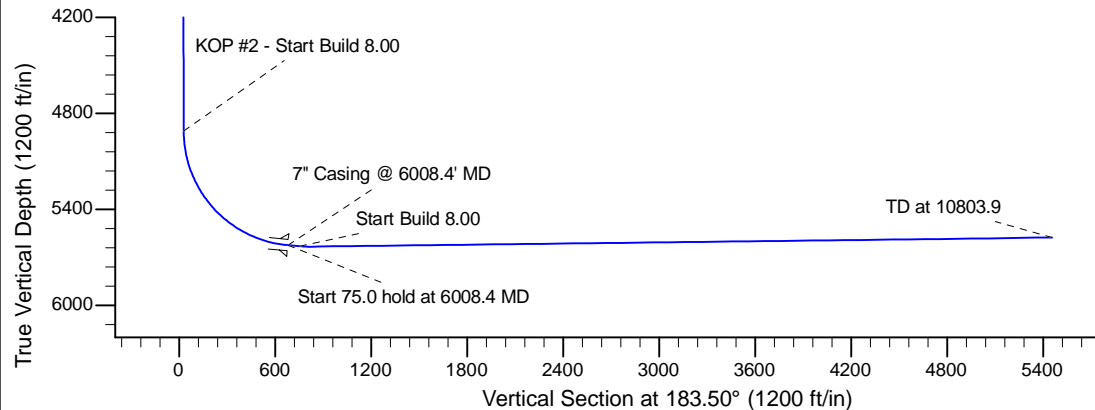
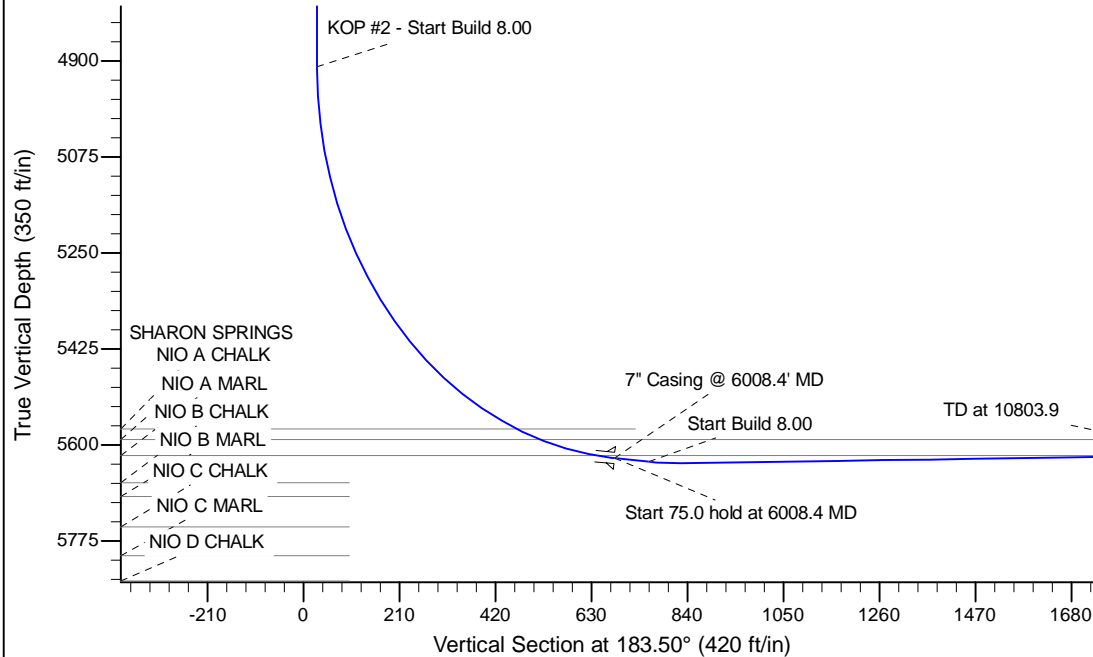
Project: Wattenberg Field
Site: LD (Sec.2-T09N-R58W) Weld County, CO
Well: Moses State LD11-78HN
Wellbore: Original Drilling
Design: APD - Rev 1

Northern Region Drilling - Working

Geodetic System: US State Plane 1983
Datum: North American Datum 1983
Ellipsoid: GRS 1980
Zone: Colorado Northern Zone
System Datum: Mean Sea Level

SECTION DETAILS

Sec	MD	Inc	Azi	TVD	+N/-S	+E/-W	Dleg	TFace	VSec	Target
1	0.0	0.00	0.00	0.0	0.0	0.0	0.00	0.00	0.0	
2	1200.0	0.00	0.00	1200.0	0.0	0.0	0.00	0.00	0.0	
3	1650.0	9.00	270.00	1648.1	0.0	-35.3	2.00	270.00	2.2	
4	4235.5	9.00	270.00	4201.9	0.0	-439.7	0.00	0.00	26.8	
5	4685.5	0.00	0.00	4650.0	0.0	-475.0	2.00	180.00	29.0	
6	4945.9	0.00	0.00	4910.4	0.0	-475.0	0.00	0.00	29.0	
7	6008.4	85.00	178.51	5623.9	-653.6	-457.9	8.00	178.51	680.3	
8	6083.4	85.00	178.51	5630.4	-728.2	-456.0	0.00	0.00	754.7	
9	6154.7	90.70	178.51	5633.1	-799.4	-454.1	8.00	0.00	825.6	
10	10803.9	90.70	178.51	5576.3	-5446.7	-332.9	0.00	0.00	5456.9	Moses State LD11-78HN BHL 330'FSL, 675'FWL



WELL DETAILS: Moses State LD11-78HN

Ground Level: 4748.0		Latitude		Longitude	
Northing	Easting				
0.0	0.0	1529337.81	3460623.69	40.774560	-103.836830

Plan: APD - Rev 1 (Moses State LD11-78HN/Original Drilling)

Created By: Shailey Jewell Date: 10:47, August 28 2014

Checked: _____ Date: _____

Reviewed: _____ Date: _____

Approved: _____ Date: _____