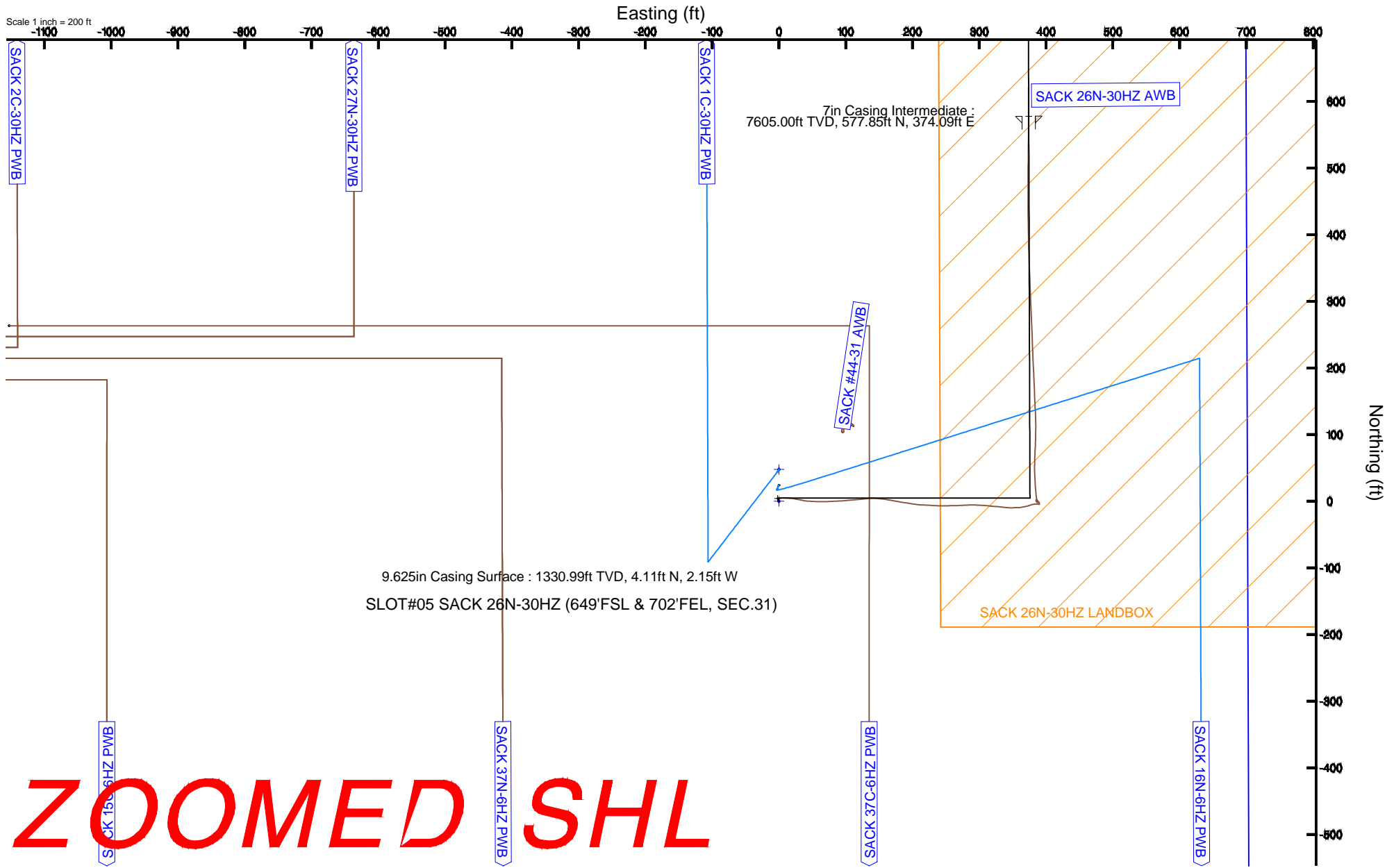


KERR-MCGEE OIL & GAS ONSHORE LP

Location: COLORADO Slot: SLOT#05 SACK 26N-30HZ (649'FSL & 702'FEL, SEC.31)
 Field: WELD COUNTY (KERR MCGEE) Well: SACK 26N-30HZ
 Facility: SEC.31-T1N-R67W Wellbore: SACK 26N-30HZ PWB

Plot reference wellpath is SACK 26N-30HZ (REV-C.0) PWP

True vertical depths are referenced to PRECISION 595 (25'KB) (RKB)	Grid System: NAD83 / Lambert Colorado SP, Northern Zone (501), US feet
Measured depths are referenced to PRECISION 595 (25'KB) (RKB)	North Reference: True north
PRECISION 595 (25'KB) (RKB) to Mean Sea Level: 5080 feet	Scale: True distance
Mean Sea Level to Mud line (At Slot: SLOT#05 SACK 26N-30HZ (649'FSL & 702'FEL, SEC.31)): 0 feet	Depths are in feet
Coordinates are in feet referenced to Slot	Created by: robiale01 on 9/3/2014



ZOOMED SHL



Planned Wellpath Report

SACK 26N-30HZ (REV-C.0) PWP

Page 1 of 8



REFERENCE WELLPATH IDENTIFICATION			
Operator	KERR-MCGEE OIL & GAS ONSHORE LP	Slot	SLOT#05 SACK 26N-30HZ (649'FSL & 702'FEL, SEC.31)
Area	COLORADO	Well	SACK 26N-30HZ
Field	WELD COUNTY (KERR MCGEE)	Wellbore	SACK 26N-30HZ PWB
Facility	SEC.31-T1N-R67W		

REPORT SETUP INFORMATION			
Projection System	NAD83 / Lambert Colorado SP, Northern Zone (501), US feet	Software System	WellArchitect® 4.0.0
North Reference	True	User	Robiale01
Scale	0.999966	Report Generated	9/3/2014 at 9:27:49 AM
Convergence at slot	n/a	Database/Source file	WellArchitectDB/SACK_26N-30HZ_PWB.xml

WELLPATH LOCATION						
	Local coordinates		Grid coordinates		Geographic coordinates	
	North[ft]	East[ft]	Easting[US ft]	Northing[US ft]	Latitude	Longitude
Slot Location	-176.41	3681.78	3160744.61	1244139.57	40°00'07.636"N	104°55'34.338"W
Facility Reference Pt			3157061.92	1244292.69	40°00'09.382"N	104°56'21.649"W
Field Reference Pt			3197771.84	1268891.29	40°04'09.600"N	104°47'36.000"W

WELLPATH DATUM			
Calculation method	Minimum curvature	PRECISION 595 (25'KB) (RKB) to Facility Vertical Datum	5080.00ft
Horizontal Reference Pt	Slot	PRECISION 595 (25'KB) (RKB) to Mean Sea Level	5080.00ft
Vertical Reference Pt	PRECISION 595 (25'KB) (RKB)	PRECISION 595 (25'KB) (RKB) to Mud Line at Slot (SLOT#05 SACK 26N-30HZ (649'FSL & 702'FEL, SEC.31))	5080.00ft
MD Reference Pt	PRECISION 595 (25'KB) (RKB)	Section Origin	N 0.00, E 0.00 ft
Field Vertical Reference	Mean Sea Level	Section Azimuth	359.82°

Planned Wellpath Report

SACK 26N-30HZ (REV-C.0) PWP

Page 2 of 8

REFERENCE WELLPATH IDENTIFICATION			
Operator	KERR-MCGEE OIL & GAS ONSHORE LP	Slot	SLOT#05 SACK 26N-30HZ (649'FSL & 702'FEL, SEC.31)
Area	COLORADO	Well	SACK 26N-30HZ
Field	WELD COUNTY (KERR MCGEE)	Wellbore	SACK 26N-30HZ PWB
Facility	SEC.31-T1N-R67W		

WELLPATH DATA (188 stations) † = interpolated/extrapolated station

MD [ft]	Inclination [°]	Azimuth [°]	TVD [ft]	Vert Sect [ft]	North [ft]	East [ft]	Latitude	Longitude	DLS [°/100ft]	Comments
0.00†	0.000	344.940	0.00	0.00	0.00	0.00	40°00'07.636"N	104°55'34.338"W	0.00	
25.00	0.000	344.940	25.00	0.00	0.00	0.00	40°00'07.636"N	104°55'34.338"W	0.00	
125.00	0.230	344.940	125.00	0.19	0.19	-0.05	40°00'07.638"N	104°55'34.339"W	0.23	
225.00	0.210	0.810	225.00	0.57	0.57	-0.10	40°00'07.642"N	104°55'34.339"W	0.06	
325.00	0.210	334.780	325.00	0.92	0.92	-0.18	40°00'07.645"N	104°55'34.340"W	0.09	
425.00	0.320	346.480	425.00	1.36	1.36	-0.32	40°00'07.649"N	104°55'34.342"W	0.12	
525.00	0.220	341.020	525.00	1.81	1.81	-0.45	40°00'07.654"N	104°55'34.344"W	0.10	
625.00	0.040	322.070	625.00	2.02	2.02	-0.53	40°00'07.656"N	104°55'34.345"W	0.18	
725.00	0.210	332.330	725.00	2.21	2.21	-0.64	40°00'07.658"N	104°55'34.346"W	0.17	
825.00	0.270	328.120	824.99	2.57	2.57	-0.85	40°00'07.661"N	104°55'34.349"W	0.06	
925.00	0.260	338.280	924.99	2.99	2.98	-1.06	40°00'07.665"N	104°55'34.352"W	0.05	
1025.00	0.270	316.510	1024.99	3.37	3.36	-1.30	40°00'07.669"N	104°55'34.355"W	0.10	
1125.00	0.180	303.620	1124.99	3.63	3.62	-1.60	40°00'07.672"N	104°55'34.359"W	0.10	
1225.00	0.190	337.170	1224.99	3.87	3.86	-1.79	40°00'07.674"N	104°55'34.361"W	0.11	
1235.01†	0.200	322.689	1235.00	3.90	3.89	-1.81	40°00'07.674"N	104°55'34.361"W	0.50	FOX HILLS MARKER
1255.00	0.250	300.380	1254.99	3.95	3.94	-1.87	40°00'07.675"N	104°55'34.362"W	0.50	TIE ONTO GYROS
1355.00†	0.250	300.380	1354.99	4.17	4.16	-2.24	40°00'07.677"N	104°55'34.367"W	0.00	
1431.01	0.250	300.380	1431.00	4.34	4.33	-2.53	40°00'07.679"N	104°55'34.371"W	0.00	BEGIN NUDGE
1455.00†	0.290	65.463	1454.99	4.39	4.38	-2.52	40°00'07.679"N	104°55'34.370"W	2.00	
1555.00†	2.266	87.572	1554.96	4.57	4.57	-0.31	40°00'07.681"N	104°55'34.342"W	2.00	
1655.00†	4.264	89.042	1654.79	4.70	4.72	5.38	40°00'07.683"N	104°55'34.269"W	2.00	
1755.00†	6.264	89.574	1754.37	4.77	4.82	14.55	40°00'07.684"N	104°55'34.151"W	2.00	
1855.00†	8.264	89.850	1853.56	4.79	4.88	27.20	40°00'07.684"N	104°55'33.989"W	2.00	
1941.83	10.000	90.000	1939.29	4.76	4.89	40.98	40°00'07.684"N	104°55'33.811"W	2.00	END NUDGE
1955.00†	10.000	90.000	1952.25	4.76	4.89	43.26	40°00'07.684"N	104°55'33.782"W	0.00	
2055.00†	10.000	90.000	2050.73	4.70	4.89	60.63	40°00'07.684"N	104°55'33.559"W	0.00	
2155.00†	10.000	90.000	2149.22	4.65	4.89	77.99	40°00'07.684"N	104°55'33.336"W	0.00	
2255.00†	10.000	90.000	2247.70	4.59	4.89	95.36	40°00'07.684"N	104°55'33.113"W	0.00	
2355.00†	10.000	90.000	2346.18	4.54	4.89	112.72	40°00'07.684"N	104°55'32.890"W	0.00	
2455.00†	10.000	90.000	2444.66	4.48	4.89	130.09	40°00'07.684"N	104°55'32.666"W	0.00	
2555.00†	10.000	90.000	2543.14	4.43	4.89	147.45	40°00'07.684"N	104°55'32.443"W	0.00	
2655.00†	10.000	90.000	2641.62	4.37	4.89	164.82	40°00'07.684"N	104°55'32.220"W	0.00	
2755.00†	10.000	90.000	2740.10	4.32	4.89	182.18	40°00'07.684"N	104°55'31.997"W	0.00	
2855.00†	10.000	90.000	2838.58	4.26	4.89	199.55	40°00'07.684"N	104°55'31.774"W	0.00	
2955.00†	10.000	90.000	2937.06	4.21	4.89	216.91	40°00'07.684"N	104°55'31.551"W	0.00	
3055.00†	10.000	90.000	3035.54	4.15	4.89	234.28	40°00'07.684"N	104°55'31.328"W	0.00	
3155.00†	10.000	90.000	3134.02	4.09	4.89	251.64	40°00'07.684"N	104°55'31.104"W	0.00	
3255.00†	10.000	90.000	3232.50	4.04	4.89	269.01	40°00'07.684"N	104°55'30.881"W	0.00	
3355.00†	10.000	90.000	3330.99	3.98	4.89	286.37	40°00'07.684"N	104°55'30.658"W	0.00	
3455.00†	10.000	90.000	3429.47	3.93	4.89	303.74	40°00'07.684"N	104°55'30.435"W	0.00	
3555.00†	10.000	90.000	3527.95	3.87	4.89	321.10	40°00'07.684"N	104°55'30.212"W	0.00	
3620.04	10.000	90.000	3592.00	3.84	4.89	332.39	40°00'07.684"N	104°55'30.067"W	0.00	BEGIN DROP
3655.00†	9.301	90.000	3626.46	3.82	4.89	338.25	40°00'07.684"N	104°55'29.991"W	2.00	
3755.00†	7.301	90.000	3725.41	3.77	4.89	352.69	40°00'07.684"N	104°55'29.806"W	2.00	

3855.00†	5.301	90.000	3824.80	3.74	4.89	363.67	40°00'07.684"N	104°55'29.665"W	2.00	
----------	-------	--------	---------	------	------	--------	----------------	-----------------	------	--

REFERENCE WELLPATH IDENTIFICATION			
Operator	KERR-MCGEE OIL & GAS ONSHORE LP	Slot	SLOT#05 SACK 26N-30HZ (649'FSL & 702'FEL, SEC.31)
Area	COLORADO	Well	SACK 26N-30HZ
Field	WELD COUNTY (KERR MCGEE)	Wellbore	SACK 26N-30HZ PWB
Facility	SEC.31-T1N-R67W		

WELLPATH DATA (188 stations) † = interpolated/extrapolated station										
MD [ft]	Inclination [°]	Azimuth [°]	TVD [ft]	Vert Sect [ft]	North [ft]	East [ft]	Latitude	Longitude	DLS [°/100ft]	Comments
3955.00†	3.301	90.000	3924.52	3.72	4.89	371.16	40°00'07.684"N	104°55'29.569"W	2.00	
4055.00†	1.301	90.000	4024.43	3.70	4.89	375.18	40°00'07.684"N	104°55'29.517"W	2.00	
4120.04	0.000	359.817	4089.47	3.70	4.89	375.92	40°00'07.684"N	104°55'29.507"W	2.00	END DROP
4155.00†	0.000	359.817	4124.42	3.70	4.89	375.92	40°00'07.684"N	104°55'29.507"W	0.00	
4255.00†	0.000	359.817	4224.42	3.70	4.89	375.92	40°00'07.684"N	104°55'29.507"W	0.00	
4355.00†	0.000	359.817	4324.42	3.70	4.89	375.92	40°00'07.684"N	104°55'29.507"W	0.00	
4455.00†	0.000	359.817	4424.42	3.70	4.89	375.92	40°00'07.684"N	104°55'29.507"W	0.00	
4555.00†	0.000	359.817	4524.42	3.70	4.89	375.92	40°00'07.684"N	104°55'29.507"W	0.00	
4655.00†	0.000	359.817	4624.42	3.70	4.89	375.92	40°00'07.684"N	104°55'29.507"W	0.00	
4755.00†	0.000	359.817	4724.42	3.70	4.89	375.92	40°00'07.684"N	104°55'29.507"W	0.00	
4855.00†	0.000	359.817	4824.42	3.70	4.89	375.92	40°00'07.684"N	104°55'29.507"W	0.00	
4955.00†	0.000	359.817	4924.42	3.70	4.89	375.92	40°00'07.684"N	104°55'29.507"W	0.00	
5055.00†	0.000	359.817	5024.42	3.70	4.89	375.92	40°00'07.684"N	104°55'29.507"W	0.00	
5110.58†	0.000	359.817	5080.00	3.70	4.89	375.92	40°00'07.684"N	104°55'29.507"W	0.00	SUSSEX
5155.00†	0.000	359.817	5124.42	3.70	4.89	375.92	40°00'07.684"N	104°55'29.507"W	0.00	
5255.00†	0.000	359.817	5224.42	3.70	4.89	375.92	40°00'07.684"N	104°55'29.507"W	0.00	
5355.00†	0.000	359.817	5324.42	3.70	4.89	375.92	40°00'07.684"N	104°55'29.507"W	0.00	
5431.58†	0.000	359.817	5401.00	3.70	4.89	375.92	40°00'07.684"N	104°55'29.507"W	0.00	SHANNON
5455.00†	0.000	359.817	5424.42	3.70	4.89	375.92	40°00'07.684"N	104°55'29.507"W	0.00	
5555.00†	0.000	359.817	5524.42	3.70	4.89	375.92	40°00'07.684"N	104°55'29.507"W	0.00	
5655.00†	0.000	359.817	5624.42	3.70	4.89	375.92	40°00'07.684"N	104°55'29.507"W	0.00	
5755.00†	0.000	359.817	5724.42	3.70	4.89	375.92	40°00'07.684"N	104°55'29.507"W	0.00	
5855.00†	0.000	359.817	5824.42	3.70	4.89	375.92	40°00'07.684"N	104°55'29.507"W	0.00	
5955.00†	0.000	359.817	5924.42	3.70	4.89	375.92	40°00'07.684"N	104°55'29.507"W	0.00	
6055.00†	0.000	359.817	6024.42	3.70	4.89	375.92	40°00'07.684"N	104°55'29.507"W	0.00	
6155.00†	0.000	359.817	6124.42	3.70	4.89	375.92	40°00'07.684"N	104°55'29.507"W	0.00	
6255.00†	0.000	359.817	6224.42	3.70	4.89	375.92	40°00'07.684"N	104°55'29.507"W	0.00	
6355.00†	0.000	359.817	6324.42	3.70	4.89	375.92	40°00'07.684"N	104°55'29.507"W	0.00	
6455.00†	0.000	359.817	6424.42	3.70	4.89	375.92	40°00'07.684"N	104°55'29.507"W	0.00	
6555.00†	0.000	359.817	6524.42	3.70	4.89	375.92	40°00'07.684"N	104°55'29.507"W	0.00	
6655.00†	0.000	359.817	6624.42	3.70	4.89	375.92	40°00'07.684"N	104°55'29.507"W	0.00	
6755.00†	0.000	359.817	6724.42	3.70	4.89	375.92	40°00'07.684"N	104°55'29.507"W	0.00	
6855.00†	0.000	359.817	6824.42	3.70	4.89	375.92	40°00'07.684"N	104°55'29.507"W	0.00	
6955.00†	0.000	359.817	6924.42	3.70	4.89	375.92	40°00'07.684"N	104°55'29.507"W	0.00	
7055.00†	0.000	359.817	7024.42	3.70	4.89	375.92	40°00'07.684"N	104°55'29.507"W	0.00	
7062.62	0.000	359.817	7032.05	3.70	4.89	375.92	40°00'07.684"N	104°55'29.507"W	0.00	KOP, BUILD @ 10°/100'
7155.00†	9.238	359.817	7124.02	11.13	12.33	375.89	40°00'07.758"N	104°55'29.508"W	10.00	
7255.00†	19.238	359.817	7220.83	35.69	36.89	375.81	40°00'08.001"N	104°55'29.509"W	10.00	
7355.00†	29.238	359.817	7311.90	76.70	77.89	375.68	40°00'08.406"N	104°55'29.510"W	10.00	
7455.00†	39.238	359.817	7394.46	132.89	134.08	375.50	40°00'08.961"N	104°55'29.513"W	10.00	
7455.69†	39.307	359.817	7395.00	133.32	134.52	375.50	40°00'08.965"N	104°55'29.513"W	10.00	SHARON SPRINGS
7495.63†	43.301	359.817	7425.00	159.68	160.88	375.42	40°00'09.226"N	104°55'29.514"W	10.00	NIOBRARA
7555.00†	49.238	359.817	7466.02	202.56	203.76	375.28	40°00'09.650"N	104°55'29.516"W	10.00	
7655.00†	59.238	359.817	7524.39	283.60	284.80	375.02	40°00'10.450"N	104°55'29.519"W	10.00	

7755.00†	69.238	359.817	7567.80	373.55	374.74	374.74	40°00'11.339"N	104°55'29.523"W	10.00	
----------	--------	---------	---------	--------	--------	--------	----------------	-----------------	-------	--

Planned Wellpath Report

SACK 26N-30HZ (REV-C.0) PWP

Page 4 of 8

REFERENCE WELLPATH IDENTIFICATION			
Operator	KERR-MCGEE OIL & GAS ONSHORE LP	Slot	SLOT#05 SACK 26N-30HZ (649'FSL & 702'FEL, SEC.31)
Area	COLORADO	Well	SACK 26N-30HZ
Field	WELD COUNTY (KERR MCGEE)	Wellbore	SACK 26N-30HZ PWB
Facility	SEC.31-T1N-R67W		

WELLPATH DATA (188 stations) † = interpolated/extrapolated station										
MD [ft]	Inclination [°]	Azimuth [°]	TVD [ft]	Vert Sect [ft]	North [ft]	East [ft]	Latitude	Longitude	DLS [°/100ft]	Comments
7792.73†	73.011	359.817	7580.00	409.25	410.44	374.62	40°00'11.692"N	104°55'29.524"W	10.00	NIOBRARA B
7855.00†	79.238	359.817	7594.93	469.67	470.86	374.43	40°00'12.289"N	104°55'29.526"W	10.00	
7955.00†	89.238	359.817	7604.95	569.04	570.23	374.11	40°00'13.271"N	104°55'29.531"W	10.00	
7962.62	90.000	359.817	7605.00	576.66	577.85	374.09	40°00'13.346"N	104°55'29.531"W	10.00	LANDING POINT
8055.00†	90.000	359.817	7605.00	669.04	670.23	373.80	40°00'14.259"N	104°55'29.535"W	0.00	
8155.00†	90.000	359.817	7605.00	769.04	770.23	373.48	40°00'15.248"N	104°55'29.539"W	0.00	
8255.00†	90.000	359.817	7605.00	869.04	870.23	373.16	40°00'16.236"N	104°55'29.543"W	0.00	
8355.00†	90.000	359.818	7605.00	969.04	970.23	372.84	40°00'17.224"N	104°55'29.547"W	0.00	
8455.00†	90.000	359.818	7605.00	1069.04	1070.23	372.52	40°00'18.212"N	104°55'29.551"W	0.00	
8555.00†	90.000	359.818	7605.00	1169.04	1170.22	372.20	40°00'19.201"N	104°55'29.555"W	0.00	
8655.00†	90.000	359.818	7605.00	1269.04	1270.22	371.88	40°00'20.189"N	104°55'29.559"W	0.00	
8755.00†	90.000	359.818	7605.00	1369.04	1370.22	371.57	40°00'21.177"N	104°55'29.563"W	0.00	
8855.00†	90.000	359.818	7605.00	1469.04	1470.22	371.25	40°00'22.165"N	104°55'29.567"W	0.00	
8955.00†	90.000	359.818	7605.00	1569.04	1570.22	370.93	40°00'23.153"N	104°55'29.571"W	0.00	
9055.00†	90.000	359.818	7605.00	1669.04	1670.22	370.61	40°00'24.142"N	104°55'29.575"W	0.00	
9155.00†	90.000	359.818	7605.00	1769.04	1770.22	370.29	40°00'25.130"N	104°55'29.579"W	0.00	
9255.00†	90.000	359.818	7605.00	1869.04	1870.22	369.98	40°00'26.118"N	104°55'29.583"W	0.00	
9355.00†	90.000	359.818	7605.00	1969.04	1970.22	369.66	40°00'27.106"N	104°55'29.587"W	0.00	
9455.00†	90.000	359.818	7605.00	2069.04	2070.22	369.34	40°00'28.095"N	104°55'29.592"W	0.00	
9555.00†	90.000	359.818	7605.00	2169.04	2170.22	369.02	40°00'29.083"N	104°55'29.596"W	0.00	
9655.00†	90.000	359.818	7605.00	2269.04	2270.22	368.71	40°00'30.071"N	104°55'29.600"W	0.00	
9755.00†	90.000	359.818	7605.00	2369.04	2370.22	368.39	40°00'31.059"N	104°55'29.604"W	0.00	
9855.00†	90.000	359.818	7605.00	2469.04	2470.22	368.07	40°00'32.047"N	104°55'29.608"W	0.00	
9955.00†	90.000	359.818	7605.00	2569.04	2570.22	367.76	40°00'33.036"N	104°55'29.612"W	0.00	
10055.00†	90.000	359.818	7605.00	2669.04	2670.22	367.44	40°00'34.024"N	104°55'29.616"W	0.00	
10155.00†	90.000	359.818	7605.00	2769.04	2770.22	367.12	40°00'35.012"N	104°55'29.620"W	0.00	
10255.00†	90.000	359.819	7605.00	2869.04	2870.22	366.80	40°00'36.000"N	104°55'29.624"W	0.00	
10355.00†	90.000	359.819	7605.00	2969.04	2970.22	366.49	40°00'36.989"N	104°55'29.628"W	0.00	
10455.00†	90.000	359.819	7605.00	3069.04	3070.22	366.17	40°00'37.977"N	104°55'29.632"W	0.00	
10555.00†	90.000	359.819	7605.00	3169.04	3170.21	365.86	40°00'38.965"N	104°55'29.636"W	0.00	
10655.00†	90.000	359.819	7605.00	3269.04	3270.21	365.54	40°00'39.953"N	104°55'29.640"W	0.00	
10755.00†	90.000	359.819	7605.00	3369.04	3370.21	365.22	40°00'40.941"N	104°55'29.644"W	0.00	
10855.00†	90.000	359.819	7605.00	3469.04	3470.21	364.91	40°00'41.930"N	104°55'29.648"W	0.00	
10955.00†	90.000	359.819	7605.00	3569.04	3570.21	364.59	40°00'42.918"N	104°55'29.652"W	0.00	
11055.00†	90.000	359.819	7605.00	3669.04	3670.21	364.27	40°00'43.906"N	104°55'29.656"W	0.00	
11155.00†	90.000	359.819	7605.00	3769.04	3770.21	363.96	40°00'44.894"N	104°55'29.660"W	0.00	
11255.00†	90.000	359.819	7605.00	3869.04	3870.21	363.64	40°00'45.883"N	104°55'29.664"W	0.00	
11355.00†	90.000	359.819	7605.00	3969.04	3970.21	363.33	40°00'46.871"N	104°55'29.668"W	0.00	
11455.00†	90.000	359.819	7605.00	4069.04	4070.21	363.01	40°00'47.859"N	104°55'29.673"W	0.00	
11555.00†	90.000	359.819	7605.00	4169.04	4170.21	362.70	40°00'48.847"N	104°55'29.677"W	0.00	
11655.00†	90.000	359.819	7605.00	4269.04	4270.21	362.38	40°00'49.836"N	104°55'29.681"W	0.00	
11755.00†	90.000	359.819	7605.00	4369.04	4370.21	362.06	40°00'50.824"N	104°55'29.685"W	0.00	
11855.00†	90.000	359.819	7605.00	4469.04	4470.21	361.75	40°00'51.812"N	104°55'29.689"W	0.00	
11955.00†	90.000	359.819	7605.00	4569.04	4570.21	361.43	40°00'52.800"N	104°55'29.693"W	0.00	

12055.00†	90.000	359.820	7605.00	4669.04	4670.21	361.12	40°00'53.788"N	104°55'29.697"W	0.00
-----------	--------	---------	---------	---------	---------	--------	----------------	-----------------	------

Planned Wellpath Report

SACK 26N-30HZ (REV-C.0) PWP

Page 5 of 8

REFERENCE WELLPATH IDENTIFICATION			
Operator	KERR-MCGEE OIL & GAS ONSHORE LP	Slot	SLOT#05 SACK 26N-30HZ (649'FSL & 702'FEL, SEC.31)
Area	COLORADO	Well	SACK 26N-30HZ
Field	WELD COUNTY (KERR MCGEE)	Wellbore	SACK 26N-30HZ PWB
Facility	SEC.31-T1N-R67W		

WELLPATH DATA (188 stations) † = interpolated/extrapolated station										
MD [ft]	Inclination [°]	Azimuth [°]	TVD [ft]	Vert Sect [ft]	North [ft]	East [ft]	Latitude	Longitude	DLS [°/100ft]	Comments
12155.00†	90.000	359.820	7605.00	4769.04	4770.21	360.80	40°00'54.777"N	104°55'29.701"W	0.00	
12255.00†	90.000	359.820	7605.00	4869.04	4870.21	360.49	40°00'55.765"N	104°55'29.705"W	0.00	
12355.00†	90.000	359.820	7605.00	4969.04	4970.21	360.17	40°00'56.753"N	104°55'29.709"W	0.00	
12455.00†	90.000	359.820	7605.00	5069.04	5070.21	359.86	40°00'57.741"N	104°55'29.713"W	0.00	
12555.00†	90.000	359.820	7605.00	5169.04	5170.20	359.55	40°00'58.730"N	104°55'29.717"W	0.00	
12655.00†	90.000	359.820	7605.00	5269.04	5270.20	359.23	40°00'59.718"N	104°55'29.721"W	0.00	
12755.00†	90.000	359.820	7605.00	5369.04	5370.20	358.92	40°01'00.706"N	104°55'29.725"W	0.00	
12855.00†	90.000	359.820	7605.00	5469.04	5470.20	358.60	40°01'01.694"N	104°55'29.729"W	0.00	
12955.00†	90.000	359.820	7605.00	5569.04	5570.20	358.29	40°01'02.682"N	104°55'29.733"W	0.00	
13055.00†	90.000	359.820	7605.00	5669.04	5670.20	357.97	40°01'03.671"N	104°55'29.737"W	0.00	
13155.00†	90.000	359.820	7605.00	5769.04	5770.20	357.66	40°01'04.659"N	104°55'29.741"W	0.00	
13255.00†	90.000	359.820	7605.00	5869.04	5870.20	357.35	40°01'05.647"N	104°55'29.745"W	0.00	
13355.00†	90.000	359.820	7605.00	5969.04	5970.20	357.03	40°01'06.635"N	104°55'29.749"W	0.00	
13455.00†	90.000	359.820	7605.00	6069.04	6070.20	356.72	40°01'07.624"N	104°55'29.753"W	0.00	
13555.00†	90.000	359.820	7605.00	6169.04	6170.20	356.40	40°01'08.612"N	104°55'29.757"W	0.00	
13655.00†	90.000	359.820	7605.00	6269.04	6270.20	356.09	40°01'09.600"N	104°55'29.761"W	0.00	
13755.00†	90.000	359.820	7605.00	6369.04	6370.20	355.78	40°01'10.588"N	104°55'29.765"W	0.00	
13855.00†	90.000	359.820	7605.00	6469.04	6470.20	355.46	40°01'11.576"N	104°55'29.769"W	0.00	
13955.00†	90.000	359.821	7605.00	6569.04	6570.20	355.15	40°01'12.565"N	104°55'29.773"W	0.00	
14055.00†	90.000	359.821	7605.00	6669.04	6670.20	354.84	40°01'13.553"N	104°55'29.777"W	0.00	
14155.00†	90.000	359.821	7605.00	6769.04	6770.20	354.52	40°01'14.541"N	104°55'29.781"W	0.00	
14255.00†	90.000	359.821	7605.00	6869.04	6870.20	354.21	40°01'15.529"N	104°55'29.785"W	0.00	
14355.00†	90.000	359.821	7605.00	6969.04	6970.20	353.90	40°01'16.518"N	104°55'29.789"W	0.00	
14455.00†	90.000	359.821	7605.00	7069.04	7070.20	353.59	40°01'17.506"N	104°55'29.793"W	0.00	
14555.00†	90.000	359.821	7605.00	7169.04	7170.19	353.27	40°01'18.494"N	104°55'29.797"W	0.00	
14655.00†	90.000	359.821	7605.00	7269.04	7270.19	352.96	40°01'19.482"N	104°55'29.801"W	0.00	
14755.00†	90.000	359.821	7605.00	7369.04	7370.19	352.65	40°01'20.471"N	104°55'29.805"W	0.00	
14855.00†	90.000	359.821	7605.00	7469.04	7470.19	352.34	40°01'21.459"N	104°55'29.809"W	0.00	
14955.00†	90.000	359.821	7605.00	7569.04	7570.19	352.02	40°01'22.447"N	104°55'29.813"W	0.00	
15055.00†	90.000	359.821	7605.00	7669.04	7670.19	351.71	40°01'23.435"N	104°55'29.817"W	0.00	
15155.00†	90.000	359.821	7605.00	7769.04	7770.19	351.40	40°01'24.423"N	104°55'29.821"W	0.00	
15255.00†	90.000	359.821	7605.00	7869.04	7870.19	351.09	40°01'25.412"N	104°55'29.825"W	0.00	
15355.00†	90.000	359.821	7605.00	7969.04	7970.19	350.77	40°01'26.400"N	104°55'29.829"W	0.00	
15455.00†	90.000	359.821	7605.00	8069.04	8070.19	350.46	40°01'27.388"N	104°55'29.833"W	0.00	
15555.00†	90.000	359.821	7605.00	8169.04	8170.19	350.15	40°01'28.376"N	104°55'29.837"W	0.00	
15655.00†	90.000	359.821	7605.00	8269.04	8270.19	349.84	40°01'29.365"N	104°55'29.841"W	0.00	
15755.00†	90.000	359.822	7605.00	8369.04	8370.19	349.53	40°01'30.353"N	104°55'29.845"W	0.00	
15855.00†	90.000	359.822	7605.00	8469.04	8470.19	349.22	40°01'31.341"N	104°55'29.849"W	0.00	
15955.00†	90.000	359.822	7605.00	8569.04	8570.19	348.91	40°01'32.329"N	104°55'29.853"W	0.00	
16055.00†	90.000	359.822	7605.00	8669.04	8670.19	348.59	40°01'33.317"N	104°55'29.857"W	0.00	
16155.00†	90.000	359.822	7605.00	8769.04	8770.19	348.28	40°01'34.306"N	104°55'29.861"W	0.00	
16255.00†	90.000	359.822	7605.00	8869.04	8870.19	347.97	40°01'35.294"N	104°55'29.865"W	0.00	
16355.00†	90.000	359.822	7605.00	8969.04	8970.19	347.66	40°01'36.282"N	104°55'29.869"W	0.00	
16455.00†	90.000	359.822	7605.00	9069.04	9070.19	347.35	40°01'37.270"N	104°55'29.873"W	0.00	

16555.00†	90.000	359.822	7605.00	9169.04	9170.19	347.04	40°01'38.259"N	104°55'29.877"W	0.00
-----------	--------	---------	---------	---------	---------	--------	----------------	-----------------	------

Planned Wellpath Report

SACK 26N-30HZ (REV-C.0) PWP

Page 6 of 8

REFERENCE WELLPATH IDENTIFICATION			
Operator	KERR-MCGEE OIL & GAS ONSHORE LP	Slot	SLOT#05 SACK 26N-30HZ (649'FSL & 702'FEL, SEC.31)
Area	COLORADO	Well	SACK 26N-30HZ
Field	WELD COUNTY (KERR MCGEE)	Wellbore	SACK 26N-30HZ PWB
Facility	SEC.31-T1N-R67W		

WELLPATH DATA (188 stations) † = interpolated/extrapolated station										
MD [ft]	Inclination [°]	Azimuth [°]	TVD [ft]	Vert Sect [ft]	North [ft]	East [ft]	Latitude	Longitude	DLS [°/100ft]	Comments
16655.00†	90.000	359.822	7605.00	9269.04	9270.18	346.73	40°01'39.247"N	104°55'29.881"W	0.00	
16755.00†	90.000	359.822	7605.00	9369.04	9370.18	346.42	40°01'40.235"N	104°55'29.885"W	0.00	
16855.00†	90.000	359.822	7605.00	9469.04	9470.18	346.11	40°01'41.223"N	104°55'29.889"W	0.00	
16955.00†	90.000	359.822	7605.00	9569.04	9570.18	345.80	40°01'42.211"N	104°55'29.893"W	0.00	
17055.00†	90.000	359.822	7605.00	9669.04	9670.18	345.49	40°01'43.200"N	104°55'29.897"W	0.00	
17155.00†	90.000	359.822	7605.00	9769.04	9770.18	345.18	40°01'44.188"N	104°55'29.901"W	0.00	
17255.00†	90.000	359.822	7605.00	9869.04	9870.18	344.87	40°01'45.176"N	104°55'29.905"W	0.00	
17297.77	90.000	359.822	7605.00 ¹	9911.81	9912.95	344.73	40°01'45.599"N	104°55'29.906"W	0.00	TOTAL DEPTH

HOLE & CASING SECTIONS - Ref Wellbore: SACK 26N-30HZ PWB Ref Wellpath: SACK 26N-30HZ (REV-C.0) PWP										
String/Diameter	Start MD [ft]	End MD [ft]	Interval [ft]	Start TVD [ft]	End TVD [ft]	Start N/S [ft]	Start E/W [ft]	End N/S [ft]	End E/W [ft]	
13.5in Open Hole	25.00	1341.00	1316.00	25.00	1340.99	0.00	0.00	4.13	-2.19	
9.625in Casing Surface	25.00	1331.00	1306.00	25.00	1330.99	0.00	0.00	4.11	-2.15	
8.75in Open Hole	1341.00	7962.62	6621.62	1340.99	7605.00	4.13	-2.19	577.85	374.09	
7in Casing Intermediate	25.00	7962.62	7937.62	25.00	7605.00	0.00	0.00	577.85	374.09	
6.125in Open Hole	7962.62	17307.66	9345.04	7605.00	NA	577.85	374.09	NA	NA	
4.5in Casing Production	25.00	17307.66	17282.66	25.00	NA	0.00	0.00	NA	NA	



Planned Wellpath Report

SACK 26N-30HZ (REV-C.0) PWP

Page 7 of 8



REFERENCE WELLPATH IDENTIFICATION			
Operator	KERR-MCGEE OIL & GAS ONSHORE LP	Slot	SLOT#05 SACK 26N-30HZ (649'FSL & 702'FEL, SEC.31)
Area	COLORADO	Well	SACK 26N-30HZ
Field	WELD COUNTY (KERR MCGEE)	Wellbore	SACK 26N-30HZ PWB
Facility	SEC.31-T1N-R67W		

TARGETS									
Name	MD [ft]	TVD [ft]	North [ft]	East [ft]	Grid East [US ft]	Grid North [US ft]	Latitude	Longitude	Shape
SEC.06-T1S-R67W SECTION LINES		0.00	0.00	0.00	3160744.61	1244139.57	40°00'07.636"N	104°55'34.338"W	polygon
SEC.30-T1N-R67W SECTION LINES		0.00	176.42	-2724.80	3158018.82	1244298.35	40°00'09.378"N	104°56'09.352"W	polygon
SEC.31-T1N-R67W SECTION LINES		0.00	176.42	-2724.80	3158018.82	1244298.35	40°00'09.378"N	104°56'09.352"W	polygon
1) SACK 26N-30HZ BHL ON PLAT REV-1 (1'FNL & 325'FEL, SEC.30)	17297.77	7605.00	9912.95	344.73	3161025.18	1254054.19	40°01'45.599"N	104°55'29.906"W	point
SACK 26N-30HZ LANDBOX		7605.00	47.66	0.00	3160744.30	1244187.23	40°00'08.107"N	104°55'34.338"W	polygon

SURVEY PROGRAM - Ref Wellbore: SACK 26N-30HZ PWB Ref Wellpath: SACK 26N-30HZ (REV-C.0) PWP				
Start MD [ft]	End MD [ft]	Positional Uncertainty Model	Log Name/Comment	Wellbore
25.00	1255.00	Generic gyro - continuous (Standard)		SACK 26N-30HZ AWB
1255.00	7962.62	NaviTrak (MAGCORR,IFR)		SACK 26N-30HZ PWB
7962.62	17297.77	NaviTrak (MAGCORR,IFR)		SACK 26N-30HZ PWB

REFERENCE WELLPATH IDENTIFICATION			
Operator	KERR-MCGEE OIL & GAS ONSHORE LP	Slot	SLOT#05 SACK 26N-30HZ (649'FSL & 702'FEL, SEC.31)
Area	COLORADO	Well	SACK 26N-30HZ
Field	WELD COUNTY (KERR MCGEE)	Wellbore	SACK 26N-30HZ PWB
Facility	SEC.31-T1N-R67W		

WELLPATH COMMENTS					
MD [ft]	Inclination [°]	Azimuth [°]	TVD [ft]	Comment	
1235.01	0.200	322.689	1235.00	FOX HILLS MARKER	
5110.58	0.000	359.817	5080.00	SUSSEX	
5431.58	0.000	359.817	5401.00	SHANNON	
7455.69	39.307	359.817	7395.00	SHARON SPRINGS	
7495.63	43.301	359.817	7425.00	NIOBRARA	
7792.73	73.011	359.817	7580.00	NIOBRARA B	

DESIGN COMMENTS					
MD [ft]	Inclination [°]	Azimuth [°]	TVD [ft]	Comment	
1255.00	0.250	300.380	1254.99	TIE ONTO GYROS	
1431.01	0.250	300.380	1431.00	BEGIN NUDGE	
1941.83	10.000	90.000	1939.29	END NUDGE	
3620.04	10.000	90.000	3592.00	BEGIN DROP	
4120.04	0.000	359.817	4089.47	END DROP	
7062.62	0.000	359.817	7032.05	KOP, BUILD @ 10°/100'	
7962.62	90.000	359.817	7605.00	LANDING POINT	
17297.77	90.000	359.822	7605.00	TOTAL DEPTH	