

Target Bottom Hole

T6S, R96W, 6th P.M.

WPX Energy Rocky Mountain, LLC

Well location, GM 413-21 (SURFACE LOCATION), located as shown in LOT 4 of Section 28, T6S, R96W, 6th P.M., Garfield County, Colorado.

BASIS OF ELEVATION

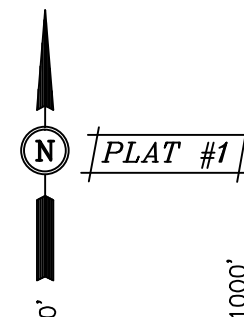
SPOT ELEVATION AT THE NORTHWEST CORNER OF SECTION 30, T5S, R95W, 6th P.M. TAKEN FROM THE FORKED GULCH QUADRANGLE, COLORADO, GARFIELD COUNTY, 7.5 MINUTE SERIES (TOPOGRAPHICAL MAP) PUBLISHED BY THE UNITED STATES DEPARTMENT OF THE INTERIOR, GEOLOGICAL SURVEY. SAID ELEVATION IS MARKED AS BEING 5966 FEET.

BASIS OF BEARINGS

BASIS OF BEARINGS IS A G.P.S. OBSERVATION.

LEGEND:

- └ = 90° SYMBOL
- = PROPOSED WELL HEAD.
- ▲ = SECTION CORNERS LOCATED.
- △ = SECTION CORNERS RE-ESTABLISHED. (Not Set on Ground.)



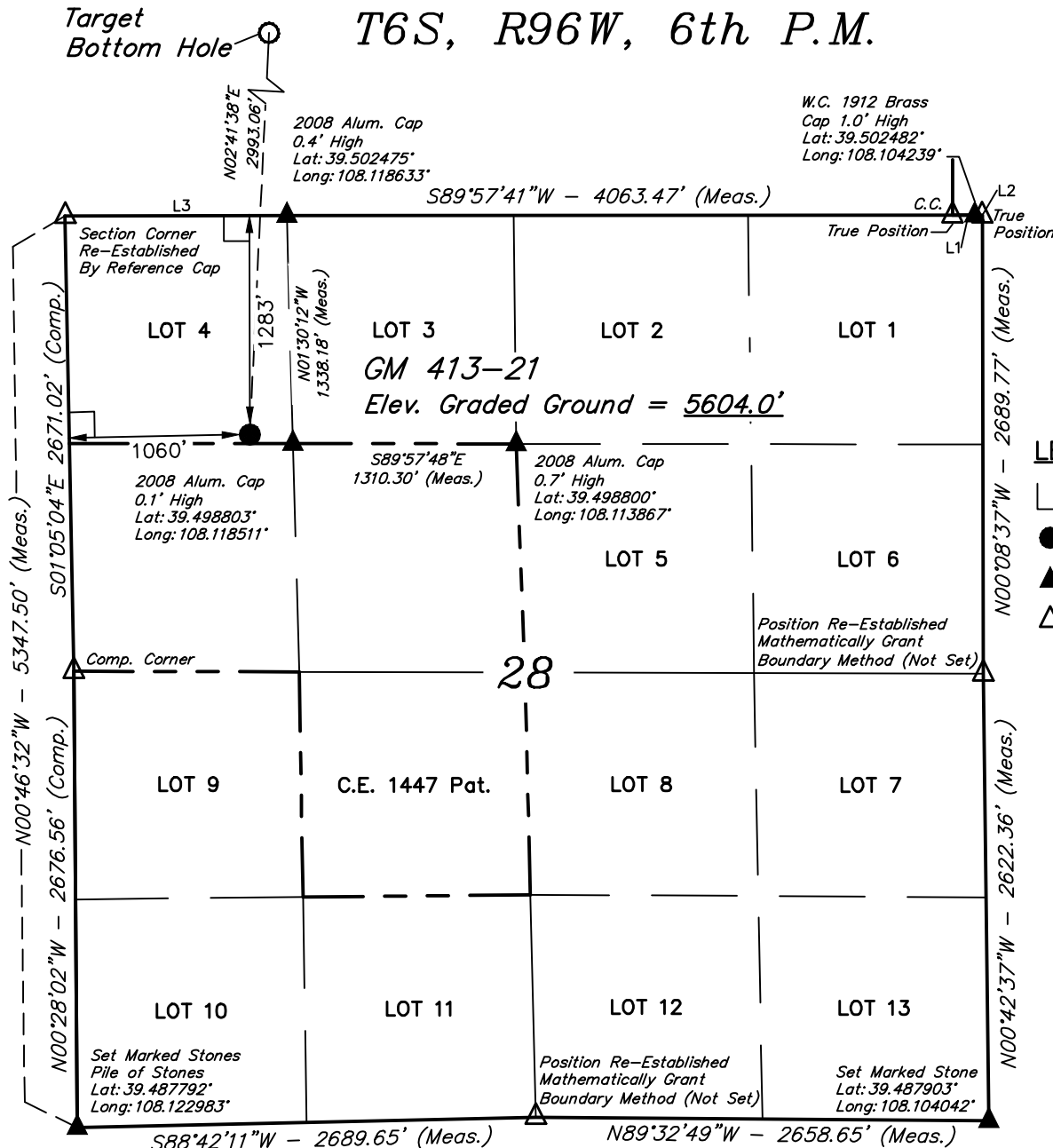
CERTIFICATE

THIS IS TO CERTIFY THAT THE ABOVE PLAT WAS PREPARED AND LOCATION AS SHOWN WAS STAKED ON THE GROUND FROM FIELD NOTES OF ACTUAL SURVEYS MADE BY ME OR UNDER MY SUPERVISION AND THAT THE SAME ARE TRUE AND CORRECT TO THE BEST OF MY KNOWLEDGE AND BELIEF.

Handwritten Signature
 REGISTERED LAND SURVEYOR
 REGISTRATION NO. 14130
 STATE OF COLORADO 08-07-14

REVISED: 08-07-14

UINTAH ENGINEERING & LAND SURVEYING		
85 SOUTH 200 EAST - VERNAL, UTAH 84078		
(435) 789-1017		
SCALE 1" = 1000'	DATE SURVEYED: 04-13-12	DATE DRAWN: 07-02-13
PARTY B.B. C.C. M.D.	REFERENCES G.L.O. PLAT	
WEATHER WARM	FILE WPX Energy Rocky Mountain, LLC	



LINE TABLE		
LINE	DIRECTION	LENGTH
L1	S89°56'58"W	158.40'
L2	S89°56'58"W	16.50'
L3	S89°54'43"W	1300.69'

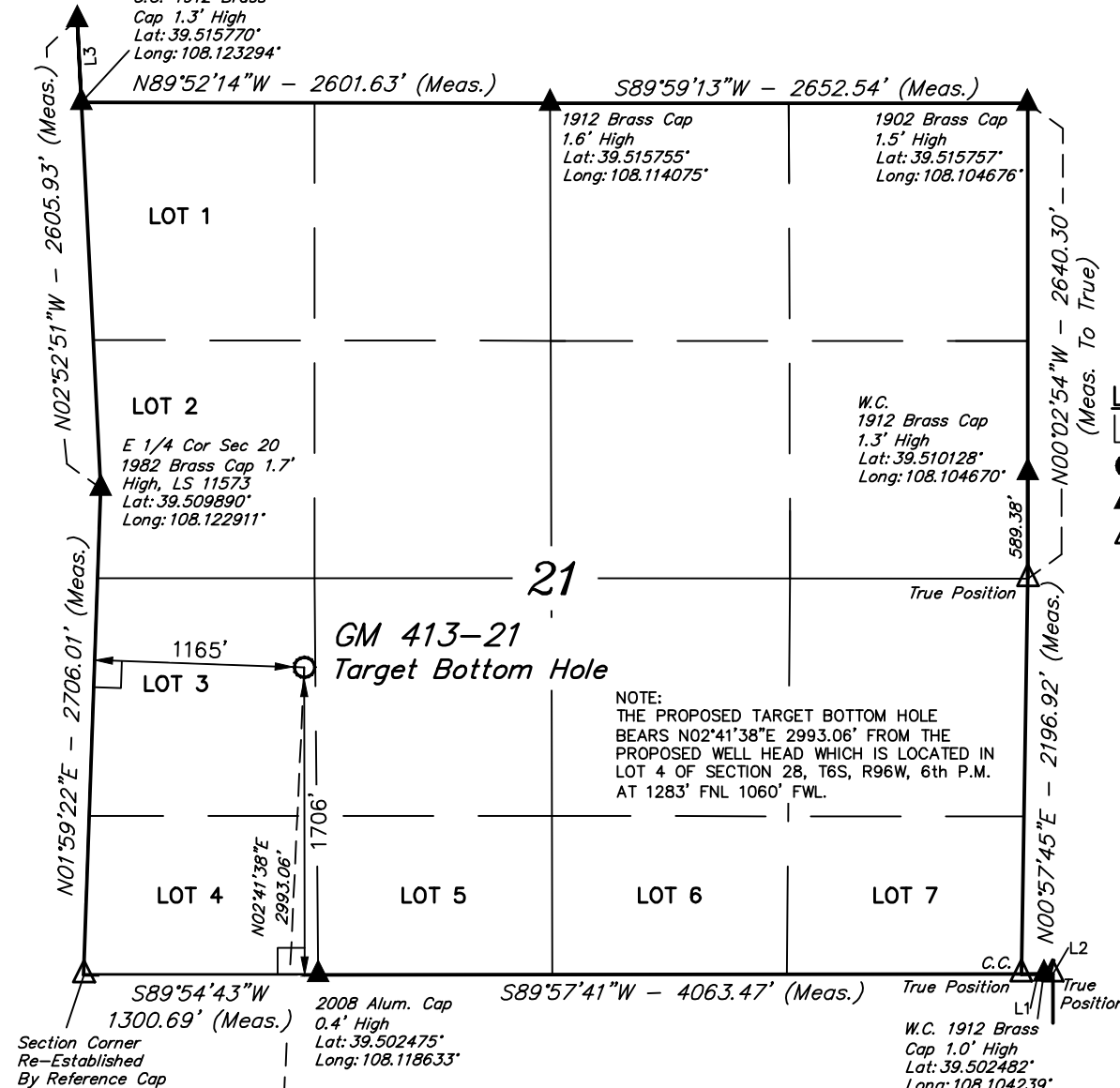
NOTE:
 THE PROPOSED TARGET BOTTOM HOLE FOR THIS WELL IS LOCATED IN LOT 3 OF SECTION 21, T6S, R96W, 6th P.M. AT 1706' FSL 1165' FWL. IT BEARS N02°41'38"E 2993.06' FROM THE PROPOSED WELL HEAD.

PDOP = 1.8
NAD 83 (SURFACE LOCATION)
LATITUDE = 39°29'56.22" (39.498950)
LONGITUDE = 108°07'09.84" (108.119400)
STATE PLANE--(COLO. CENTRAL--NAD 83)
N = 1617277.36
E = 2260937.12

T6S, R96W, 6th P.M.

NE Cor Sec 20
Pile of Stones
Lat: 39.517033°
Long: 108.123377°

C.C. 1912 Brass
Cap 1.3' High
Lat: 39.515770°
Long: 108.123294°



NOTE:
THE PROPOSED TARGET BOTTOM HOLE BEARS N02°41'38"E 2993.06' FROM THE PROPOSED WELL HEAD WHICH IS LOCATED IN LOT 4 OF SECTION 28, T6S, R96W, 6th P.M. AT 1283' FNL 1066' FWL.

LINE TABLE		
LINE	DIRECTION	LENGTH
L1	S89°56'58"W	158.40'
L2	S89°56'58"W	16.50'
L3	N02°53'50"W	460.83'

NAD 83 (TARGET BOTTOM HOLE)	
LATITUDE	= 39°30'25.76" (39.507156)
LONGITUDE	= 108°07'08.06" (108.118906)
STATE PLANE--(COLO. CENTRAL--NAD 83)	
N	= 1620260.90
E	= 2261163.50

Surface Location

WPX Energy Rocky Mountain, LLC

Well location, GM 413-21 (TARGET BOTTOM HOLE), located as shown in LOT 3 of Section 21, T6S, R96W, 6th P.M., Garfield County, Colorado.

BASIS OF ELEVATION

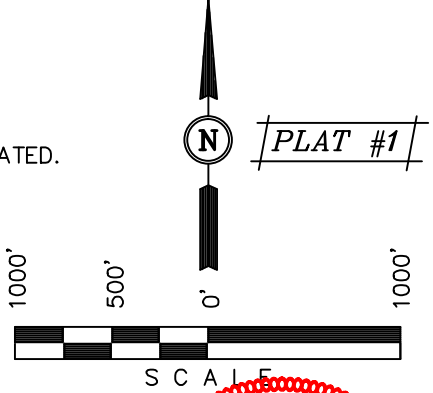
SPOT ELEVATION AT THE NORTHWEST CORNER OF SECTION 30, T5S, R95W, 6th P.M. TAKEN FROM THE FORKED GULCH QUADRANGLE, COLORADO, GARFIELD COUNTY, 7.5 MINUTE SERIES (TOPOGRAPHICAL MAP) PUBLISHED BY THE UNITED STATES DEPARTMENT OF THE INTERIOR, GEOLOGICAL SURVEY. SAID ELEVATION IS MARKED AS BEING 5966 FEET.

BASIS OF BEARINGS

BASIS OF BEARINGS IS A G.P.S. OBSERVATION.

LEGEND:

- └ = 90° SYMBOL
- = PROPOSED WELL HEAD.
- ▲ = SECTION CORNERS LOCATED.
- △ = SECTION CORNERS RE-ESTABLISHED. (Not Set on Ground.)



CERTIFICATE OF ACCURACY
 THIS IS TO CERTIFY THAT THE ABOVE PLAT WAS PREPARED AND THE LOCATION AS SHOWN WAS STAKED ON THE GROUND FROM FIELD NOTES OF ACTUAL SURVEYS MADE BY ME OR UNDER MY SUPERVISION AND THAT THE SAME ARE TRUE AND CORRECT TO THE BEST OF MY KNOWLEDGE AND BELIEF.
 REGISTERED LAND SURVEYOR
 REGISTRATION NO. 14140
 STATE OF COLORADO

REVISED: 08-07-14

UINTAH ENGINEERING & LAND SURVEYING		
85 SOUTH 200 EAST - VERNAL, UTAH 84078		
(435) 789-1017		
SCALE 1" = 1000'	DATE SURVEYED: 04-13-12	DATE DRAWN: 07-02-13
PARTY B.B. C.C. M.D.	REFERENCES G.L.O. PLAT	
WEATHER WARM	FILE WPX Energy Rocky Mountain, LLC	