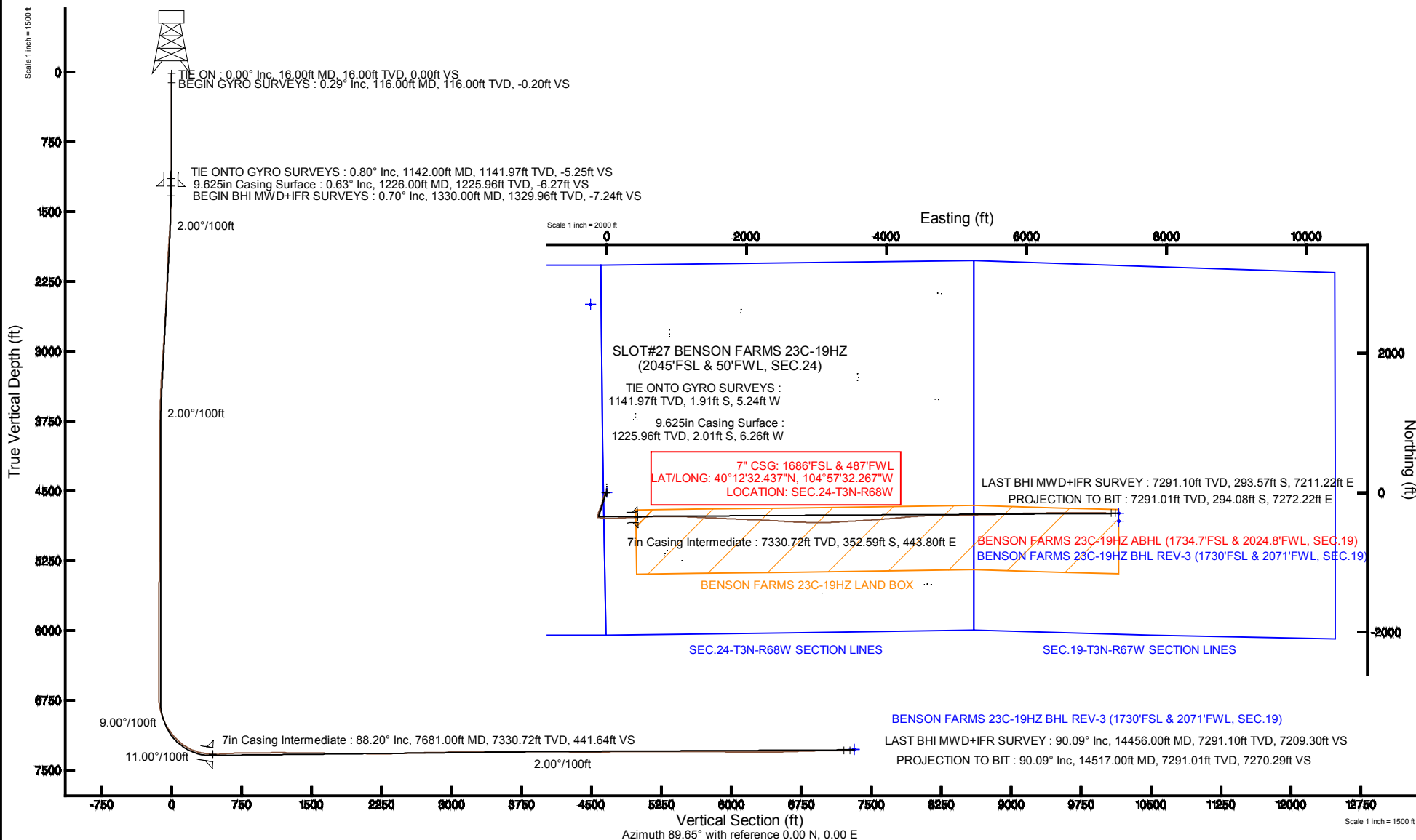


# KERR-MCGEE OIL & GAS ONSHORE LP

Location: COLORADO Slot: SLOT#27 BENSON FARMS 23C-19HZ (2045'FSL & 50'FWL, SEC.24)  
Field: WELD COUNTY (KERR MCGEE) Well: BENSON FARMS 23C-19HZ  
Facility: SEC.24-T3N-R68W Wellbore: BENSON FARMS 23C-19HZ PWB

Plot reference wellpath is BENSON FARMS 23C-19HZ (REV-C.0) PWP

True vertical depths are referenced to XTREME 24 (16' RKB) (RKB)	Grid System: NAD83 / Lambert Colorado SP, Northern Zone (501), US feet
Measured depths are referenced to XTREME 24 (16' RKB) (RKB)	North Reference: True north
XTREME 24 (16' RKB) (RKB) to Mean Sea Level: 4973 feet	Scale: True distance
Mean Sea Level to Mud line (At Slot: SLOT#27 BENSON FARMS 23C-19HZ (2045'FSL & 50'FWL, SEC.24)): 0 feet	Depths are in feet
Coordinates are in feet referenced to Slot	Created by: robiale01 on 11/Jul/2014



REFERENCE WELLPATH IDENTIFICATION			
Operator	KERR-MCGEE OIL & GAS ONSHORE LP	Slot	SLOT#27 BENSON FARMS 23C-19HZ (2045'FSL & 50'FWL, SEC.24)
Area	COLORADO	Well	BENSON FARMS 23C-19HZ
Field	WELD COUNTY (KERR MCGEE)	Wellbore	BENSON FARMS 23C-19HZ AWB
Facility	SEC.24-T3N-R68W		

REPORT SETUP INFORMATION			
Projection System	NAD83 / Lambert Colorado SP, Northern Zone (501), US feet	Software System	WellArchitect® 4.0.0
North Reference	True	User	Robiale01
Scale	0.999957	Report Generated	11/Jul/2014 at 10:40
Convergence at slot	n/a	Database/Source file	WellArchitectDB/BENSON_FARMS_23C-19HZ_AWB.xml

WELLPATH LOCATION						
	Local coordinates		Grid coordinates		Geographic coordinates	
	North[ft]	East[ft]	Easting[US ft]	Northing[US ft]	Latitude	Longitude
Slot Location	-1698.09	-3575.63	3150662.06	1319795.57	40°12'35.921"N	104°57'37.987"W
Facility Reference Pt			3154226.88	1321515.82	40°12'52.704"N	104°56'51.900"W
Field Reference Pt			3197771.84	1268891.29	40°04'09.600"N	104°47'36.000"W

WELLPATH DATUM			
Calculation method	Minimum curvature	XTREME 24 (16' RKB) (RKB) to Facility Vertical Datum	4973.00ft
Horizontal Reference Pt	Slot	XTREME 24 (16' RKB) (RKB) to Mean Sea Level	4973.00ft
Vertical Reference Pt	XTREME 24 (16' RKB) (RKB)	XTREME 24 (16' RKB) (RKB) to Mud Line at Slot (SLOT#27 BENSON FARMS 23C-19HZ (2045'FSL & 50'FWL, SEC.24))	4973.00ft
MD Reference Pt	XTREME 24 (16' RKB) (RKB)	Section Origin	N 0.00, E 0.00 ft
Field Vertical Reference	Mean Sea Level	Section Azimuth	92.32°

### REFERENCE WELLPATH IDENTIFICATION

Operator	KERR-MCGEE OIL & GAS ONSHORE LP	Slot	SLOT#27 BENSON FARMS 23C-19HZ (2045'FSL & 50'FWL, SEC.24)
Area	COLORADO	Well	BENSON FARMS 23C-19HZ
Field	WELD COUNTY (KERR MCGEE)	Wellbore	BENSON FARMS 23C-19HZ AWP
Facility	SEC.24-T3N-R68W		

### WELLPATH DATA (151 stations) † = interpolated/extrapolated station

MD [ft]	Inclination [°]	Azimuth [°]	TVD [ft]	Vert Sect [ft]	North [ft]	East [ft]	Latitude	Longitude	DLS [°/100ft]	Comments
0.00†	0.000	233.090	0.00	0.00	0.00	0.00	40°12'35.921"N	104°57'37.987"W	0.00	
16.00	0.000	233.090	16.00	0.00	0.00	0.00	40°12'35.921"N	104°57'37.987"W	0.00	TIE ON
116.00	0.290	233.090	116.00	-0.20	-0.15	-0.20	40°12'35.919"N	104°57'37.990"W	0.29	BEGIN GYRO SURVEYS
216.00	0.450	195.910	216.00	-0.48	-0.68	-0.51	40°12'35.914"N	104°57'37.994"W	0.28	
316.00	0.510	211.110	315.99	-0.79	-1.44	-0.85	40°12'35.907"N	104°57'37.998"W	0.14	
416.00	0.350	230.050	415.99	-1.23	-2.02	-1.31	40°12'35.901"N	104°57'38.004"W	0.21	
516.00	0.270	201.900	515.99	-1.54	-2.43	-1.64	40°12'35.897"N	104°57'38.008"W	0.17	
616.00	0.180	187.400	615.99	-1.63	-2.81	-1.74	40°12'35.893"N	104°57'38.009"W	0.11	
716.00	0.060	37.540	715.99	-1.61	-2.92	-1.73	40°12'35.892"N	104°57'38.009"W	0.23	
816.00	0.330	321.520	815.99	-1.77	-2.65	-1.88	40°12'35.895"N	104°57'38.011"W	0.32	
916.00	0.770	291.160	915.98	-2.60	-2.19	-2.69	40°12'35.899"N	104°57'38.022"W	0.51	
1016.00	0.610	279.910	1015.98	-3.76	-1.85	-3.84	40°12'35.903"N	104°57'38.036"W	0.21	
1116.00	0.650	262.140	1115.97	-4.84	-1.84	-4.92	40°12'35.903"N	104°57'38.050"W	0.20	
1142.00	0.800	252.570	1141.97	-5.16	-1.91	-5.24	40°12'35.902"N	104°57'38.055"W	0.74	TIE ONTO GYRO SURVEYS
1330.00	0.700	319.910	1329.96	-7.17	-1.43	-7.23	40°12'35.907"N	104°57'38.080"W	0.44	BEGIN BHI MWD+IFR SURVEYS
1404.00	1.060	237.020	1403.95	-8.03	-1.45	-8.10	40°12'35.907"N	104°57'38.091"W	1.62	
1498.00	2.420	217.480	1497.90	-9.89	-3.50	-10.04	40°12'35.886"N	104°57'38.116"W	1.56	
1593.00	4.650	210.770	1592.72	-12.88	-8.40	-13.23	40°12'35.838"N	104°57'38.157"W	2.38	
1687.00	4.950	231.700	1686.40	-17.77	-14.19	-18.36	40°12'35.781"N	104°57'38.224"W	1.88	
1781.00	6.240	218.430	1779.95	-23.86	-20.71	-24.72	40°12'35.716"N	104°57'38.306"W	1.94	
1875.00	7.390	209.130	1873.29	-29.60	-29.99	-30.84	40°12'35.625"N	104°57'38.384"W	1.69	
1969.00	9.270	195.880	1966.30	-34.10	-42.55	-35.85	40°12'35.500"N	104°57'38.449"W	2.85	
2066.00	10.400	194.230	2061.87	-37.74	-58.56	-40.14	40°12'35.342"N	104°57'38.504"W	1.20	
2157.00	10.280	194.880	2151.39	-41.21	-74.37	-44.25	40°12'35.186"N	104°57'38.557"W	0.18	
2249.00	9.500	194.150	2242.03	-44.55	-89.66	-48.21	40°12'35.035"N	104°57'38.608"W	0.86	
2341.00	10.280	193.940	2332.66	-47.76	-104.99	-52.04	40°12'34.883"N	104°57'38.658"W	0.85	
2433.00	10.300	193.140	2423.18	-50.96	-120.97	-55.89	40°12'34.726"N	104°57'38.707"W	0.16	
2524.00	10.190	192.680	2512.73	-53.93	-136.74	-59.51	40°12'34.570"N	104°57'38.754"W	0.15	
2615.00	10.620	198.360	2602.23	-57.70	-152.56	-63.92	40°12'34.413"N	104°57'38.811"W	1.22	
2706.00	10.180	198.550	2691.74	-62.27	-168.14	-69.12	40°12'34.259"N	104°57'38.878"W	0.48	
2798.00	10.740	201.350	2782.21	-67.33	-183.83	-74.82	40°12'34.104"N	104°57'38.951"W	0.82	
2890.00	10.380	201.890	2872.65	-72.91	-199.50	-81.03	40°12'33.950"N	104°57'39.031"W	0.41	
2982.00	10.130	201.410	2963.18	-78.33	-214.73	-87.08	40°12'33.799"N	104°57'39.109"W	0.29	
3074.00	9.320	200.920	3053.86	-83.35	-229.22	-92.69	40°12'33.656"N	104°57'39.182"W	0.89	
3166.00	10.420	199.510	3144.50	-88.19	-244.02	-98.13	40°12'33.510"N	104°57'39.252"W	1.22	
3257.00	10.220	200.830	3234.02	-93.19	-259.32	-103.75	40°12'33.358"N	104°57'39.324"W	0.34	
3349.00	9.410	199.390	3324.68	-97.99	-274.04	-109.15	40°12'33.213"N	104°57'39.394"W	0.92	
3441.00	8.490	195.840	3415.56	-101.78	-287.67	-113.50	40°12'33.078"N	104°57'39.450"W	1.17	
3533.00	8.190	193.530	3506.58	-104.64	-300.58	-116.89	40°12'32.951"N	104°57'39.494"W	0.49	
3625.00	6.470	192.740	3597.83	-106.86	-312.01	-119.56	40°12'32.838"N	104°57'39.528"W	1.87	
3717.00	5.990	187.340	3689.29	-108.22	-321.82	-121.32	40°12'32.741"N	104°57'39.551"W	0.82	
3809.00	5.330	194.060	3780.84	-109.51	-330.73	-122.97	40°12'32.653"N	104°57'39.572"W	1.02	
3901.00	5.390	192.460	3872.44	-111.14	-339.09	-124.94	40°12'32.570"N	104°57'39.597"W	0.18	
3994.00	3.960	183.880	3965.13	-111.99	-346.56	-126.10	40°12'32.496"N	104°57'39.612"W	1.71	
4086.00	1.550	154.830	4057.02	-111.51	-350.86	-125.79	40°12'32.454"N	104°57'39.608"W	2.95	

### REFERENCE WELLPATH IDENTIFICATION

Operator	KERR-MCGEE OIL & GAS ONSHORE LP	Slot	SLOT#27 BENSON FARMS 23C-19HZ (2045'FSL & 50'FWL, SEC.24)
Area	COLORADO	Well	BENSON FARMS 23C-19HZ
Field	WELD COUNTY (KERR MCGEE)	Wellbore	BENSON FARMS 23C-19HZ AWB
Facility	SEC.24-T3N-R68W		

### WELLPATH DATA (151 stations) † = interpolated/extrapolated station

MD [ft]	Inclination [°]	Azimuth [°]	TVD [ft]	Vert Sect [ft]	North [ft]	East [ft]	Latitude	Longitude	DLS [°/100ft]	Comments
4180.00	0.490	121.090	4151.00	-110.57	-352.22	-124.90	40°12'32.440"N	104°57'39.597"W	1.25	
4366.00	0.280	101.900	4337.00	-109.42	-352.72	-123.77	40°12'32.435"N	104°57'39.582"W	0.13	
4736.00	0.200	8.520	4706.99	-108.46	-352.27	-122.79	40°12'32.440"N	104°57'39.570"W	0.10	
5077.00	0.720	301.110	5047.98	-110.27	-350.57	-124.54	40°12'32.457"N	104°57'39.592"W	0.20	
5332.00	0.860	286.690	5302.96	-113.53	-349.20	-127.75	40°12'32.470"N	104°57'39.634"W	0.09	
5417.00	1.660	253.690	5387.94	-115.32	-349.36	-129.54	40°12'32.469"N	104°57'39.657"W	1.23	
5502.00	1.800	283.910	5472.90	-117.79	-349.38	-132.02	40°12'32.468"N	104°57'39.689"W	1.07	
5587.00	1.750	301.240	5557.86	-120.23	-348.39	-134.42	40°12'32.478"N	104°57'39.720"W	0.63	
5672.00	0.370	15.150	5642.85	-121.31	-347.45	-135.46	40°12'32.487"N	104°57'39.733"W	1.98	
5842.00	0.410	83.630	5812.84	-120.59	-346.85	-134.71	40°12'32.493"N	104°57'39.723"W	0.26	
6097.00	0.200	83.610	6067.84	-119.24	-346.70	-133.36	40°12'32.495"N	104°57'39.706"W	0.08	
6353.00	0.190	239.500	6323.84	-119.16	-346.87	-133.28	40°12'32.493"N	104°57'39.705"W	0.15	
6609.00	0.670	229.190	6579.83	-120.61	-348.06	-134.78	40°12'32.481"N	104°57'39.724"W	0.19	
6694.00	0.740	228.340	6664.83	-121.37	-348.75	-135.57	40°12'32.475"N	104°57'39.734"W	0.08	
6779.00	2.590	110.070	6749.80	-119.93	-349.78	-134.17	40°12'32.465"N	104°57'39.716"W	3.54	
6864.00	13.330	104.560	6833.86	-108.49	-352.91	-122.85	40°12'32.434"N	104°57'39.570"W	12.65	
6949.00	18.770	100.730	6915.51	-85.37	-357.92	-99.92	40°12'32.384"N	104°57'39.275"W	6.52	
7034.00	25.070	95.490	6994.34	-53.83	-362.19	-68.52	40°12'32.342"N	104°57'38.870"W	7.75	
7120.00	34.680	96.240	7068.82	-11.13	-366.61	-25.96	40°12'32.298"N	104°57'38.322"W	11.18	
7205.00	40.880	91.450	7135.99	40.87	-369.94	25.95	40°12'32.265"N	104°57'37.653"W	8.07	
7290.00	48.340	88.010	7196.46	100.44	-369.54	85.58	40°12'32.269"N	104°57'36.884"W	9.22	
7375.00	57.450	86.590	7247.69	167.89	-366.30	153.22	40°12'32.301"N	104°57'36.012"W	10.80	
7460.00	68.360	86.790	7286.35	243.09	-361.95	228.65	40°12'32.344"N	104°57'35.040"W	12.84	
7545.00	76.030	87.640	7312.32	323.64	-358.03	309.42	40°12'32.383"N	104°57'33.999"W	9.07	
7630.00	83.820	87.700	7327.18	406.99	-354.63	392.98	40°12'32.417"N	104°57'32.922"W	9.16	
7681.00†	88.203	87.700	7330.72	457.68	-352.59	443.80	40°12'32.437"N	104°57'32.267"W	8.60	7" CASING POINT
7751.00	94.220	87.700	7329.24	527.41	-349.78	513.70	40°12'32.464"N	104°57'31.366"W	8.60	
7782.00	94.190	87.350	7326.97	558.22	-348.45	544.58	40°12'32.478"N	104°57'30.968"W	1.13	
7875.00	93.080	87.740	7321.07	650.71	-344.47	637.31	40°12'32.517"N	104°57'29.773"W	1.26	
7967.00	91.920	88.810	7317.06	742.39	-341.71	729.18	40°12'32.544"N	104°57'28.589"W	1.71	
8059.00	90.840	89.710	7314.84	834.23	-340.52	821.14	40°12'32.556"N	104°57'27.403"W	1.53	
8151.00	89.440	90.520	7314.62	926.16	-340.70	913.14	40°12'32.554"N	104°57'26.218"W	1.76	
8243.00	90.490	90.810	7314.68	1018.12	-341.77	1005.13	40°12'32.543"N	104°57'25.032"W	1.18	
8335.00	90.520	92.010	7313.87	1110.10	-344.04	1097.10	40°12'32.521"N	104°57'23.846"W	1.30	
8427.00	89.530	92.340	7313.83	1202.10	-347.53	1189.03	40°12'32.486"N	104°57'22.662"W	1.13	
8518.00	89.130	93.280	7314.89	1293.09	-351.99	1279.91	40°12'32.442"N	104°57'21.490"W	1.12	
8610.00	90.390	93.210	7315.27	1385.07	-357.20	1371.76	40°12'32.391"N	104°57'20.306"W	1.37	
8702.00	88.630	92.380	7316.06	1477.06	-361.68	1463.64	40°12'32.346"N	104°57'19.122"W	2.12	
8794.00	89.160	92.580	7317.84	1569.05	-365.66	1555.54	40°12'32.307"N	104°57'17.938"W	0.62	
8886.00	89.070	92.660	7319.26	1661.03	-369.87	1647.43	40°12'32.265"N	104°57'16.753"W	0.13	
8978.00	89.810	92.980	7320.16	1753.02	-374.39	1739.32	40°12'32.221"N	104°57'15.569"W	0.88	
9070.00	89.560	92.390	7320.66	1845.02	-378.70	1831.21	40°12'32.178"N	104°57'14.384"W	0.70	
9162.00	90.240	92.810	7320.82	1937.02	-382.88	1923.12	40°12'32.137"N	104°57'13.200"W	0.87	
9254.00	88.110	91.240	7322.15	2029.00	-386.13	2015.04	40°12'32.105"N	104°57'12.015"W	2.88	
9346.00	88.300	92.070	7325.03	2120.95	-388.78	2106.96	40°12'32.078"N	104°57'10.830"W	0.93	

# Actual Wellpath Report

BENSON FARMS 23C-19HZ AWP

Page 4 of 6

## REFERENCE WELLPATH IDENTIFICATION

Operator	KERR-MCGEE OIL & GAS ONSHORE LP	Slot	SLOT#27 BENSON FARMS 23C-19HZ (2045'FSL & 50'FWL, SEC.24)
Area	COLORADO	Well	BENSON FARMS 23C-19HZ
Field	WELD COUNTY (KERR MCGEE)	Wellbore	BENSON FARMS 23C-19HZ AWB
Facility	SEC.24-T3N-R68W		

## WELLPATH DATA (151 stations)

MD [ft]	Inclination [°]	Azimuth [°]	TVD [ft]	Vert Sect [ft]	North [ft]	East [ft]	Latitude	Longitude	DLS [°/100ft]	Comments
9438.00	89.540	92.780	7326.76	2212.93	-392.67	2198.86	40°12'32.040"N	104°57'09.646"W	1.55	
9530.00	91.360	93.120	7326.04	2304.92	-397.41	2290.73	40°12'31.993"N	104°57'08.462"W	2.01	
9615.00	91.880	93.360	7323.64	2389.87	-402.21	2375.56	40°12'31.945"N	104°57'07.368"W	0.67	
9700.00	91.530	93.680	7321.11	2474.81	-407.43	2460.36	40°12'31.894"N	104°57'06.275"W	0.56	
9785.00	92.030	93.580	7318.47	2559.75	-412.81	2545.15	40°12'31.840"N	104°57'05.183"W	0.60	
9870.00	90.990	93.240	7316.23	2644.70	-417.86	2629.97	40°12'31.790"N	104°57'04.089"W	1.29	
9955.00	91.820	92.440	7314.14	2729.67	-422.07	2714.84	40°12'31.749"N	104°57'02.996"W	1.36	
10040.00	91.080	91.550	7311.99	2814.64	-425.03	2799.76	40°12'31.719"N	104°57'01.901"W	1.36	
10125.00	91.050	91.720	7310.41	2899.62	-427.45	2884.71	40°12'31.695"N	104°57'00.806"W	0.20	
10210.00	90.950	91.090	7308.93	2984.60	-429.54	2969.67	40°12'31.675"N	104°56'59.711"W	0.75	
10295.00	90.580	90.190	7307.79	3069.55	-430.49	3054.65	40°12'31.665"N	104°56'58.616"W	1.14	
10381.00	89.930	87.730	7307.41	3155.40	-428.93	3140.63	40°12'31.680"N	104°56'57.507"W	2.96	
10466.00	90.030	86.820	7307.44	3240.07	-424.88	3225.54	40°12'31.720"N	104°56'56.413"W	1.08	
10551.00	90.270	86.670	7307.22	3324.67	-420.06	3310.40	40°12'31.768"N	104°56'55.319"W	0.33	
10636.00	90.240	87.060	7306.84	3409.28	-415.41	3395.27	40°12'31.814"N	104°56'54.225"W	0.46	
10721.00	90.210	87.220	7306.51	3493.93	-411.17	3480.16	40°12'31.855"N	104°56'53.131"W	0.19	
10806.00	90.490	85.830	7305.99	3578.50	-406.02	3565.00	40°12'31.906"N	104°56'52.038"W	1.67	
10890.00	90.610	86.730	7305.18	3662.03	-400.57	3648.82	40°12'31.960"N	104°56'50.957"W	1.08	
10975.00	90.920	86.370	7304.05	3746.59	-395.45	3733.66	40°12'32.010"N	104°56'49.864"W	0.56	
11061.00	90.860	86.430	7302.71	3832.12	-390.05	3819.48	40°12'32.064"N	104°56'48.758"W	0.10	
11146.00	90.270	85.710	7301.87	3916.61	-384.23	3904.27	40°12'32.121"N	104°56'47.665"W	1.10	
11231.00	89.470	85.190	7302.07	4001.00	-377.48	3989.01	40°12'32.188"N	104°56'46.573"W	1.12	
11316.00	89.440	85.210	7302.87	4085.34	-370.37	4073.70	40°12'32.258"N	104°56'45.481"W	0.04	
11402.00	89.560	84.570	7303.62	4170.62	-362.71	4159.36	40°12'32.333"N	104°56'44.377"W	0.76	
11487.00	89.810	84.480	7304.09	4254.83	-354.60	4243.97	40°12'32.413"N	104°56'43.286"W	0.31	
11572.00	89.840	86.040	7304.35	4339.18	-347.58	4328.68	40°12'32.482"N	104°56'42.195"W	1.84	
11657.00	89.840	85.880	7304.59	4423.66	-341.59	4413.46	40°12'32.542"N	104°56'41.102"W	0.19	
11742.00	89.750	86.040	7304.89	4508.14	-335.60	4498.25	40°12'32.601"N	104°56'40.009"W	0.22	
11827.00	89.930	87.900	7305.13	4592.77	-331.11	4583.13	40°12'32.645"N	104°56'38.915"W	2.20	
11912.00	90.670	88.530	7304.69	4677.55	-328.46	4668.09	40°12'32.671"N	104°56'37.820"W	1.14	
11997.00	91.320	89.140	7303.21	4762.37	-326.73	4753.05	40°12'32.688"N	104°56'36.725"W	1.05	
12082.00	89.810	89.890	7302.37	4847.27	-326.01	4838.04	40°12'32.695"N	104°56'35.629"W	1.98	
12167.00	90.520	90.140	7302.13	4932.20	-326.04	4923.04	40°12'32.694"N	104°56'34.534"W	0.89	
12252.00	89.660	89.780	7301.99	5017.12	-325.98	5008.04	40°12'32.695"N	104°56'33.438"W	1.10	
12337.00	90.000	88.880	7302.24	5102.01	-324.98	5093.03	40°12'32.704"N	104°56'32.343"W	1.13	
12422.00	89.930	88.520	7302.30	5186.84	-323.06	5178.01	40°12'32.723"N	104°56'31.247"W	0.43	
12507.00	90.060	88.210	7302.30	5271.64	-320.63	5262.98	40°12'32.747"N	104°56'30.152"W	0.40	
12592.00	90.270	88.010	7302.06	5356.41	-317.83	5347.93	40°12'32.775"N	104°56'29.057"W	0.34	
12677.00	90.550	88.930	7301.45	5441.21	-315.56	5432.90	40°12'32.797"N	104°56'27.962"W	1.13	
12762.00	90.550	88.880	7300.64	5526.06	-313.93	5517.88	40°12'32.813"N	104°56'26.867"W	0.06	
12848.00	89.530	87.890	7300.58	5611.85	-311.51	5603.84	40°12'32.836"N	104°56'25.759"W	1.65	
12933.00	89.590	88.180	7301.23	5696.61	-308.59	5688.79	40°12'32.865"N	104°56'24.664"W	0.35	
13018.00	89.690	87.530	7301.76	5781.35	-305.41	5773.73	40°12'32.896"N	104°56'23.569"W	0.77	
13103.00	89.160	87.680	7302.62	5866.06	-301.86	5858.65	40°12'32.931"N	104°56'22.475"W	0.65	
13188.00	88.640	89.090	7304.25	5950.84	-299.47	5943.60	40°12'32.955"N	104°56'21.380"W	1.77	

REFERENCE WELLPATH IDENTIFICATION			
Operator	KERR-MCGEE OIL & GAS ONSHORE LP	Slot	SLOT#27 BENSON FARMS 23C-19HZ (2045'FSL & 50'FWL, SEC.24)
Area	COLORADO	Well	BENSON FARMS 23C-19HZ
Field	WELD COUNTY (KERR MCGEE)	Wellbore	BENSON FARMS 23C-19HZ AWB
Facility	SEC.24-T3N-R68W		

WELLPATH DATA (151 stations)										
MD [ft]	Inclination [°]	Azimuth [°]	TVD [ft]	Vert Sect [ft]	North [ft]	East [ft]	Latitude	Longitude	DLS [°/100ft]	Comments
13274.00	88.760	89.610	7306.20	6036.71	-298.49	6029.57	40°12'32.964"N	104°56'20.272"W	0.62	
13359.00	90.180	88.970	7306.98	6121.58	-297.44	6114.56	40°12'32.974"N	104°56'19.176"W	1.83	
13444.00	90.610	88.460	7306.40	6206.41	-295.53	6199.53	40°12'32.993"N	104°56'18.081"W	0.78	
13529.00	89.590	87.950	7306.25	6291.19	-292.87	6284.49	40°12'33.019"N	104°56'16.986"W	1.34	
13614.00	90.060	88.920	7306.51	6375.99	-290.55	6369.46	40°12'33.042"N	104°56'15.891"W	1.27	
13699.00	90.460	89.790	7306.12	6460.88	-289.59	6454.45	40°12'33.051"N	104°56'14.795"W	1.13	
13785.00	91.500	89.710	7304.65	6546.78	-289.22	6540.43	40°12'33.054"N	104°56'13.687"W	1.21	
13870.00	91.440	90.010	7302.47	6631.67	-289.01	6625.41	40°12'33.056"N	104°56'12.592"W	0.36	
13955.00	92.100	90.360	7299.85	6716.57	-289.28	6710.36	40°12'33.053"N	104°56'11.497"W	0.88	
14040.00	92.000	90.660	7296.81	6801.48	-290.04	6795.31	40°12'33.046"N	104°56'10.402"W	0.37	
14125.00	91.260	90.260	7294.39	6886.40	-290.72	6880.27	40°12'33.039"N	104°56'09.307"W	0.99	
14211.00	91.320	89.780	7292.45	6972.31	-290.75	6966.25	40°12'33.038"N	104°56'08.199"W	0.56	
14296.00	89.900	91.120	7291.55	7057.25	-291.42	7051.23	40°12'33.031"N	104°56'07.103"W	2.30	
14381.00	90.330	90.720	7291.38	7142.23	-292.78	7136.22	40°12'33.018"N	104°56'06.008"W	0.69	
14456.00	90.090	90.480	7291.10	7217.19	-293.57	7211.22	40°12'33.010"N	104°56'05.041"W	0.45	LAST BHI MWD+IFR SURVEY
14517.00	90.090	90.480	7291.01	7278.16	-294.08	7272.22	40°12'33.004"N	104°56'04.255"W	0.00	PROJECTION TO BIT

HOLE & CASING SECTIONS - Ref Wellbore: BENSON FARMS 23C-19HZ AWB Ref Wellpath: BENSON FARMS 23C-19HZ AWP									
String/Diameter	Start MD [ft]	End MD [ft]	Interval [ft]	Start TVD [ft]	End TVD [ft]	Start N/S [ft]	Start E/W [ft]	End N/S [ft]	End E/W [ft]
13.5in Open Hole	16.00	1236.00	1220.00	16.00	1235.96	0.00	0.00	-1.99	-6.37
9.625in Casing Surface	16.00	1226.00	1210.00	16.00	1225.96	0.00	0.00	-2.01	-6.26
8.75in Open Hole	1236.00	7695.00	6459.00	1235.96	7331.01	-1.99	-6.37	-352.03	457.79
7in Casing Intermediate	16.00	7681.00	7665.00	16.00	7330.72	0.00	0.00	-352.59	443.80
6.125in Open Hole	7695.00	14517.00	6822.00	7331.01	7291.01	-352.03	457.79	-294.08	7272.22

WELLPATH COMPOSITION - Ref Wellbore: BENSON FARMS 23C-19HZ AWB Ref Wellpath: BENSON FARMS 23C-19HZ AWP				
Start MD [ft]	End MD [ft]	Positional Uncertainty Model	Log Name/Comment	Wellbore
16.00	1142.00	Generic gyro - continuous (Standard)	MS GYRO SURVEYS <116-1142>	BENSON FARMS 23C-19HZ AWB
1142.00	7630.00	NaviTrak (IFR)	BHI NAVITRAK MWD+IFR 8 3/4" <1330-7630>	BENSON FARMS 23C-19HZ AWB
7630.00	14456.00	NaviTrak (IFR)	BHI NAVITRAK MWD+IFR 6 1/8" <7751-14456>	BENSON FARMS 23C-19HZ AWB
14456.00	14517.00	Blind Drilling (std)	Projection to bit	BENSON FARMS 23C-19HZ AWB



REFERENCE WELLPATH IDENTIFICATION				
Operator	KERR-MCGEE OIL & GAS ONSHORE LP	Slot	SLOT#27 BENSON FARMS 23C-19HZ (2045'FSL & 50'FWL, SEC.24)	
Area	COLORADO	Well	BENSON FARMS 23C-19HZ	
Field	WELD COUNTY (KERR MCGEE)	Wellbore	BENSON FARMS 23C-19HZ AWB	
Facility	SEC.24-T3N-R68W			

WELLPATH COMMENTS				
MD [ft]	Inclination [°]	Azimuth [°]	TVD [ft]	Comment
16.00	0.000	233.090	16.00	TIE ON
116.00	0.290	233.090	116.00	BEGIN GYRO SURVEYS
1142.00	0.800	252.570	1141.97	TIE ONTO GYRO SURVEYS
1330.00	0.700	319.910	1329.96	BEGIN BHI MWD+IFR SURVEYS
7681.00	88.203	87.700	7330.72	7" CASING POINT
14456.00	90.090	90.480	7291.10	LAST BHI MWD+IFR SURVEY
14517.00	90.090	90.480	7291.01	PROJECTION TO BIT