



HIGH RESOLUTION INDUCTION COMPENSATED DENSITY COMPENSATED NEUTRON

Pioneer Energy Services

Company	Augustus Energy Resources, LLC			
Well	McCall 43-09 1N46W			
Field	Wildcat			
County	Yuma			
State	Colorado			
Company	Augustus Energy Resources, LLC	Location:	API #: 05 125 12106	
Well	McCall 43-09 1N46W		1515' FSL & 919' FEL NESE	
Field	Wildcat		SEC 9 TWP 1N RGE 46W	
County	Yuma	State	Colorado	
		Other Services	None	
Permanent Datum	GL	Elevation	3958	
Log Measured From	KB		K.B. 3964	
Drilling Measured From	KB		D.F. 3963	
			G.L. 3958	

Date	August 14, 2014		
Run Number	1		
Depth Driller	2694		
Depth Logger	2690		
Bottom Logged Interval	2690		
Top Log Interval	Casing		
Casing Driller	406		
Casing Logger	406		
Bit Size	6.25"		
Type Fluid in Hole	WBM		
Density / Viscosity	8.5 / 28		
pH / Fluid Loss	7.5 / 8.0		
Source of Sample	Mudpit		
Rm @ Meas. Temp	0.26 @ 78 F		
Rmf @ Meas. Temp	0.20 @ 78 F		
Rmc @ Meas. Temp	0.33 @ 78 F		
Source of Rmf / Rmc	Calc / Calc		
Rm @ BHT	0.20 @ 104 F		
Time Circulation Stopped	0800		
Time Logger on Bottom	1245		
Maximum Recorded Temperature	104 F		
Equipment Number	49		
Location	Ft. Morgan, CO		
Recorded By	Clint Christensen		
Witnessed By	Justin Stone		

<<< Fold Here >>>

All interpretations are opinions based on inferences from electrical or other measurements and Pioneer Wireline Services, LLC cannot and does not guarantee the accuracy or correctness of any interpretation, and Pioneer Wireline Services, LLC will not be liable or responsible for any loss, costs, damages, or expenses incurred or sustained by anyone resulting from any interpretation made by any of our officers, agents or employees.

Comments

Annular volume calculated for 4.5" casing
Excell Drilling Rig 2
Thank you for using Pioneer Energy Services.

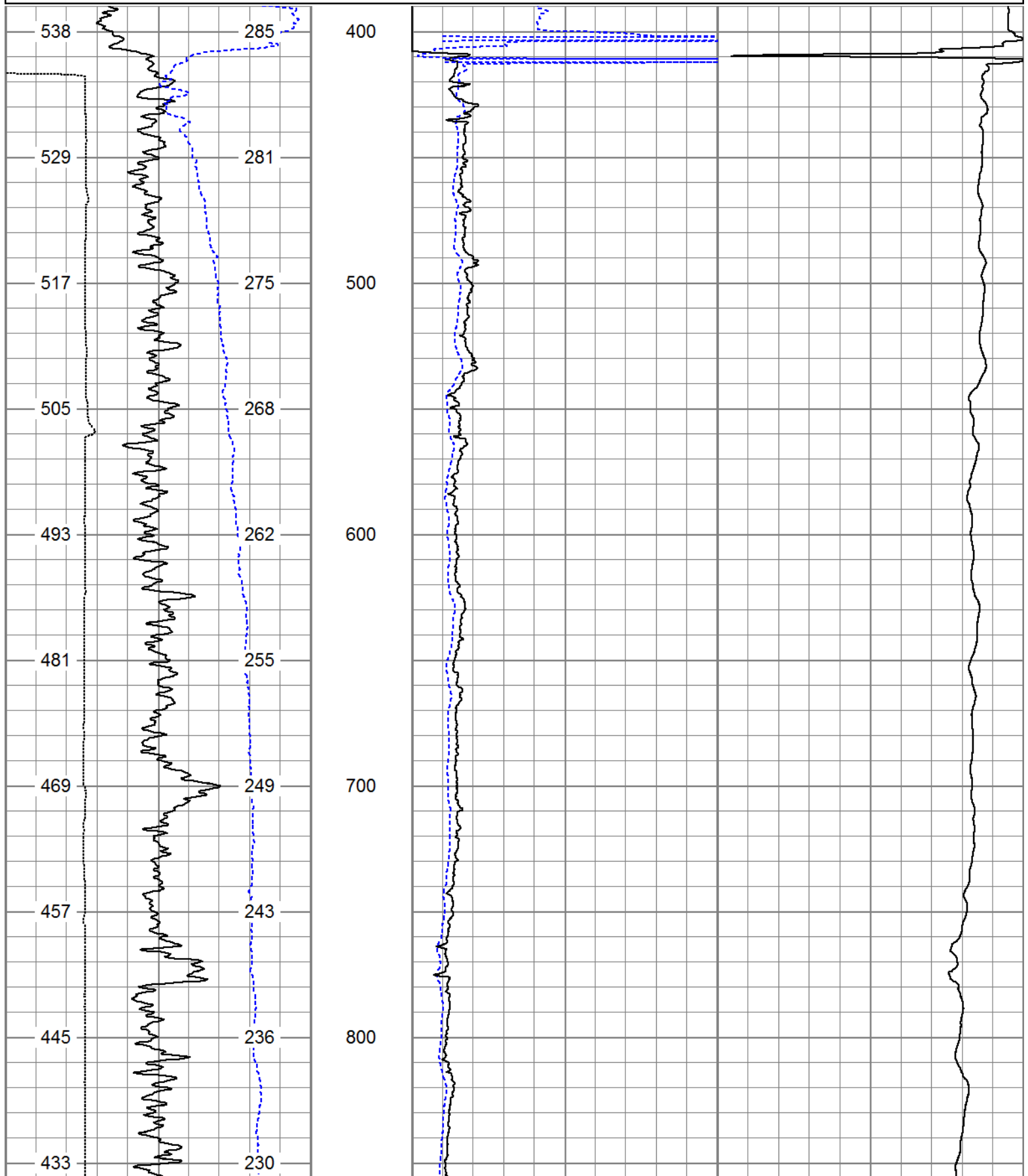
SO# 2-013675

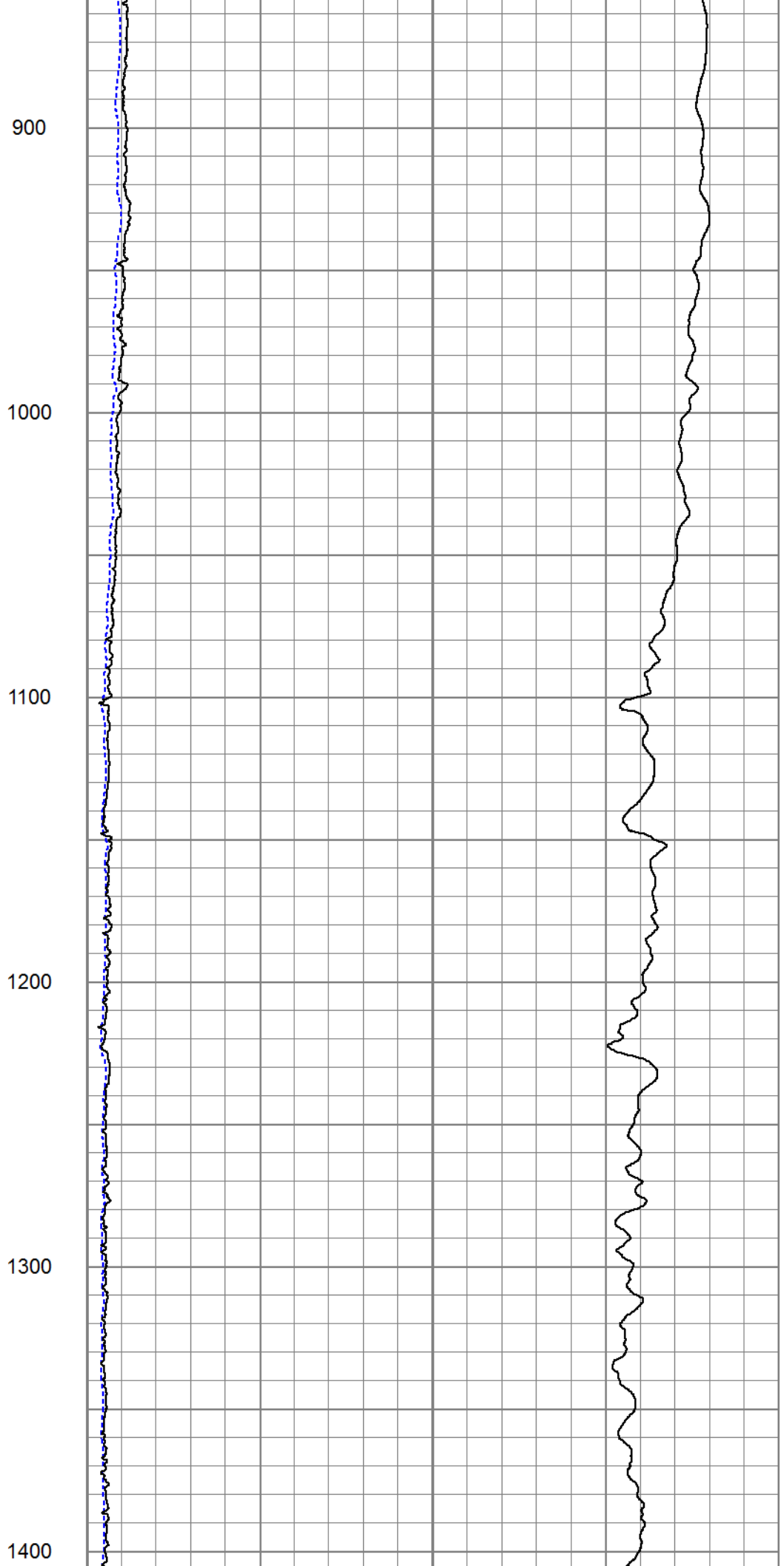
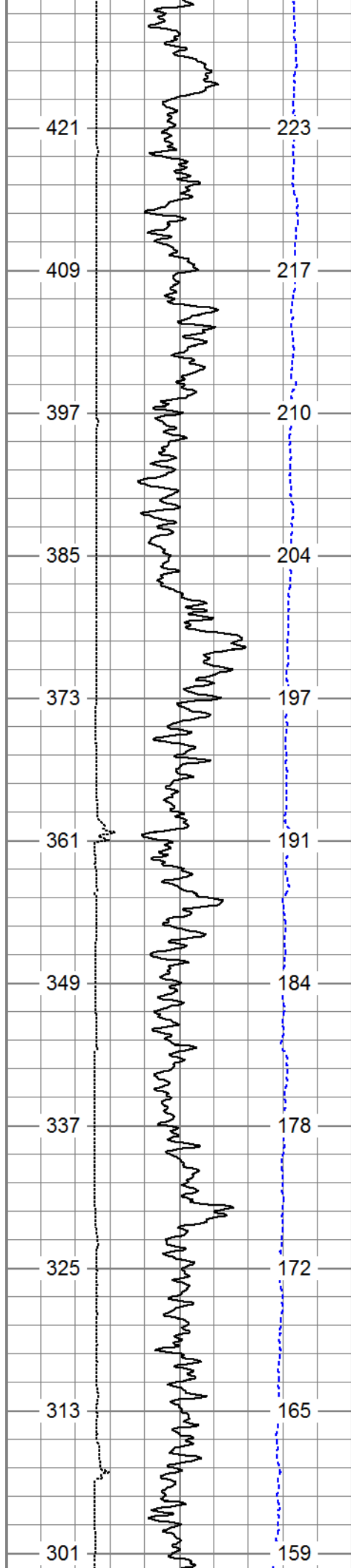
Sensor	Offset (ft)	Schematic	Description	Len (ft)	OD (in)	Wt (lb)
			CHD (~0)	2.00	3.50	30.00

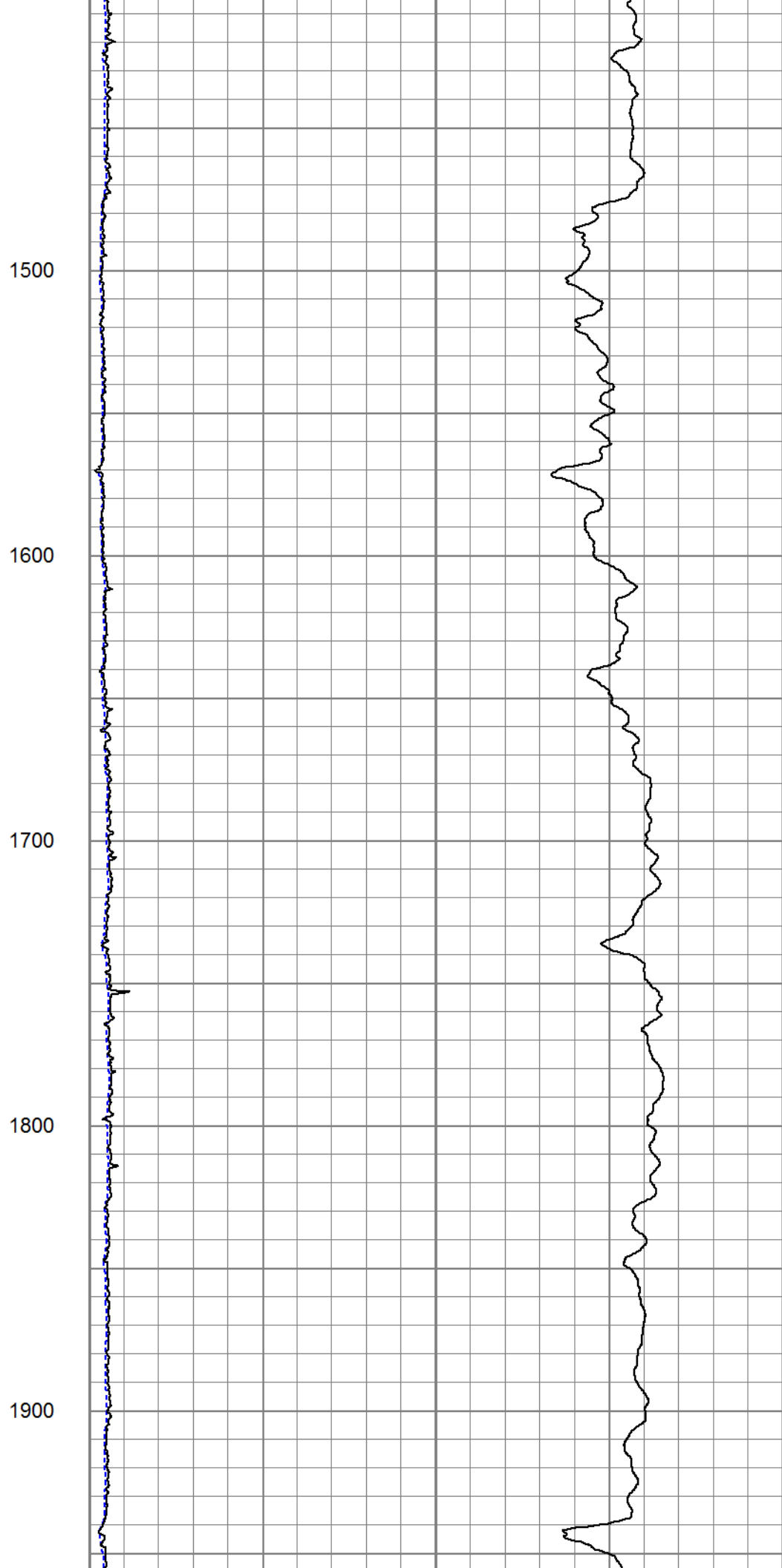
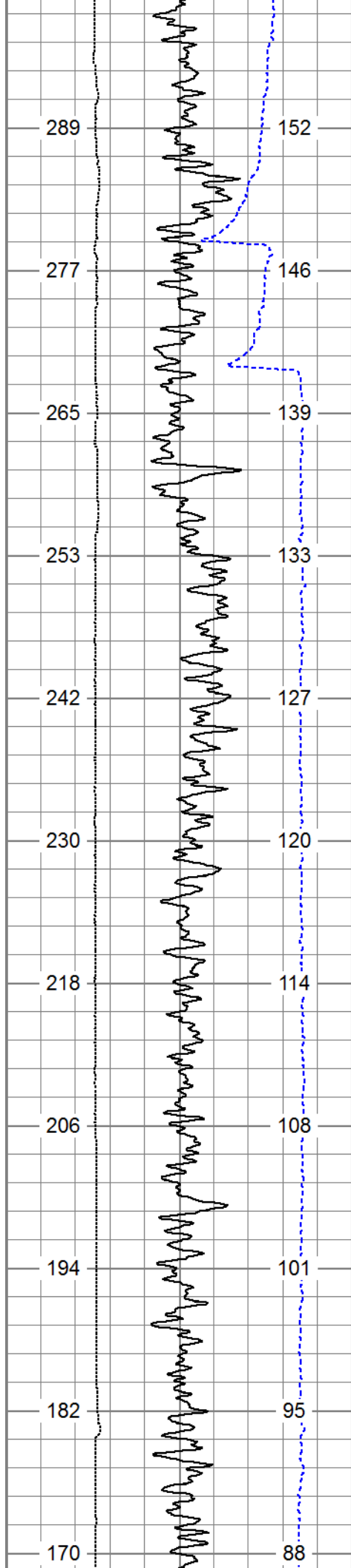
GR	0.00		GR-PSI (939)	2.92	3.50	40.00
CNLSC	-3.67		CNT-PSI (856)	5.00	3.50	70.00
CNSSC	-4.17					
			CDL-PSI (770)	8.50	5.00	285.00
DCAL	-11.84					
LSD	-12.67					
SSD	-13.17					
RLL3	-17.52					
			DIL-PSI (1011)	18.25	3.75	175.00
CILD	-24.97					
CILM	-28.42					
SP	-32.42					
Dataset: 13675.db: field/well/run1/pass1 Total Length: 36.67 ft Total Weight: 600.00 lb O.D. 5.00 in						

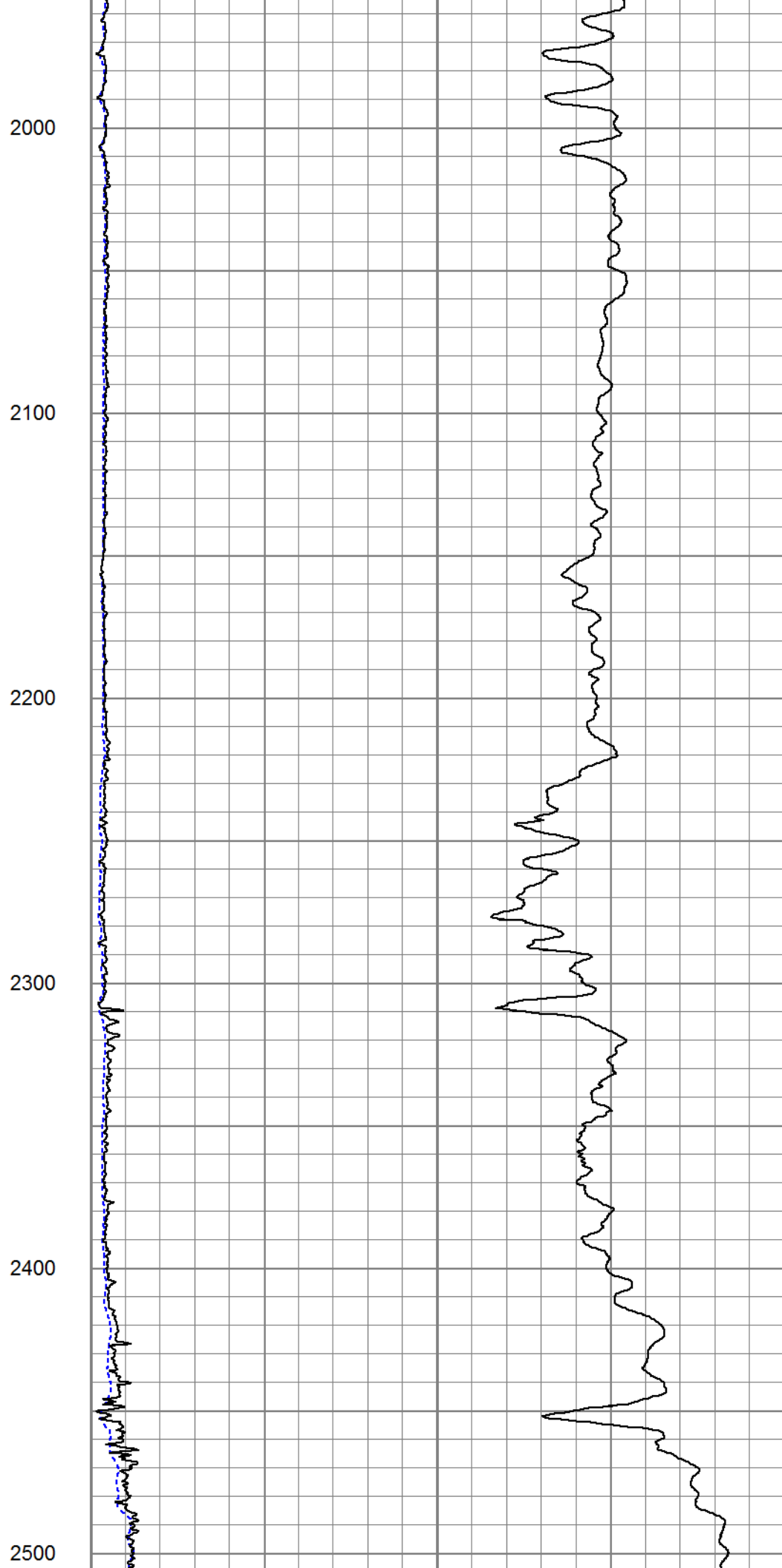
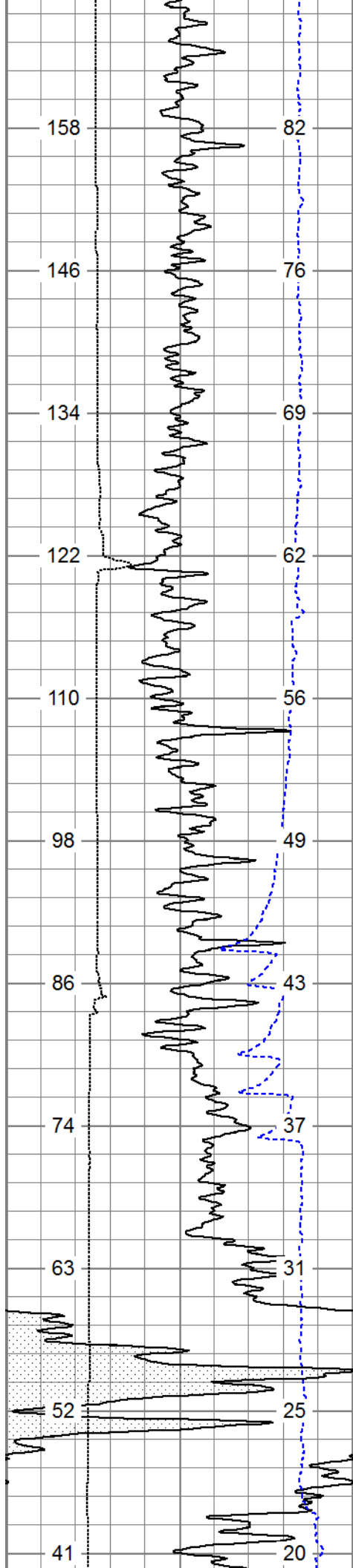
Database File: 13675.db
 Dataset Pathname: main
 Presentation Format: dilin60
 Dataset Creation: Thu Aug 14 18:20:07 2014

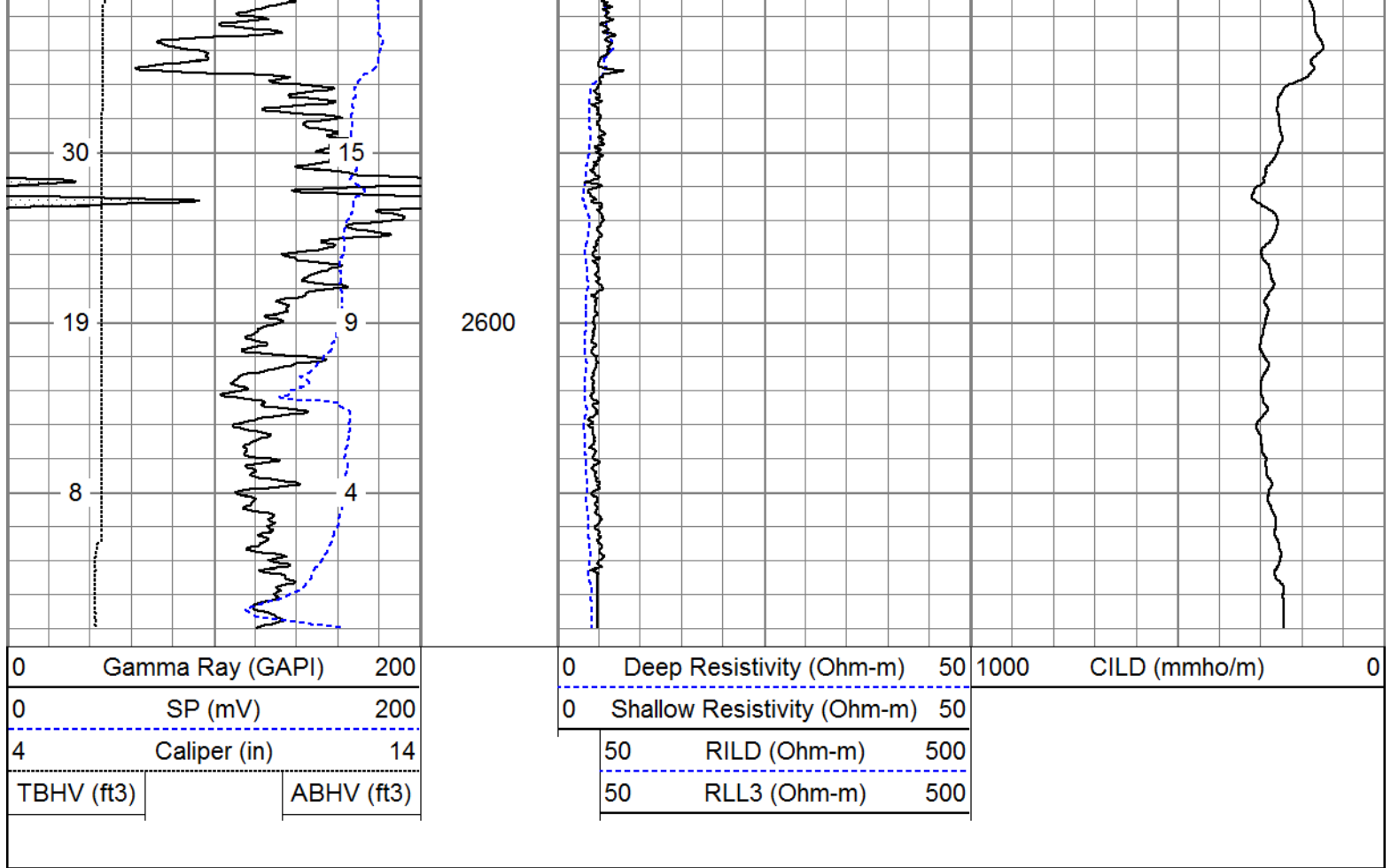
0	Gamma Ray (GAPI)	200	0	Deep Resistivity (Ohm-m)	50	1000	CILD (mmho/m)	0
0	SP (mV)	200	0	Shallow Resistivity (Ohm-m)	50			
4	Caliper (in)	14	50	RILD (Ohm-m)	500			
TBHV (ft3)		ABHV (ft3)	50	RLL3 (Ohm-m)	500			



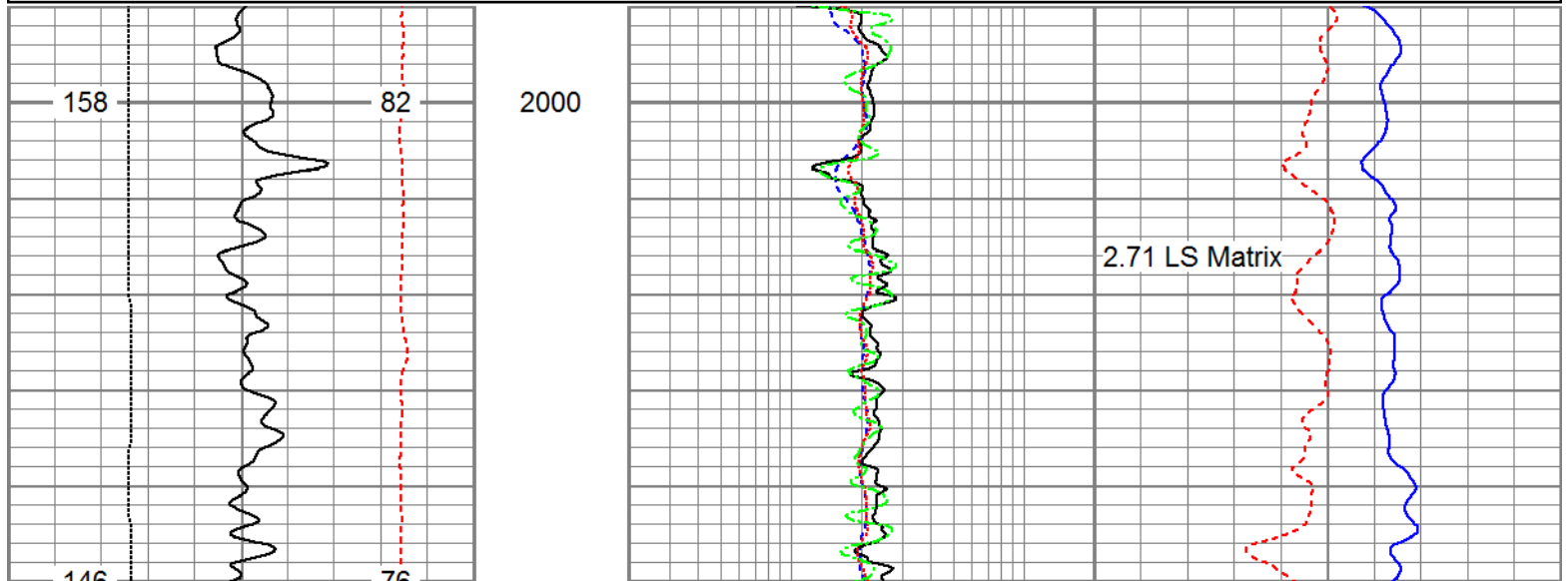
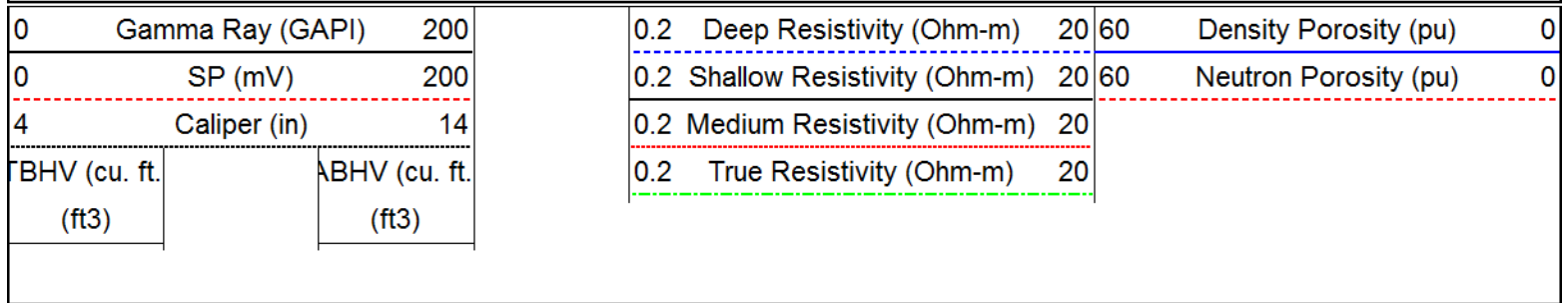


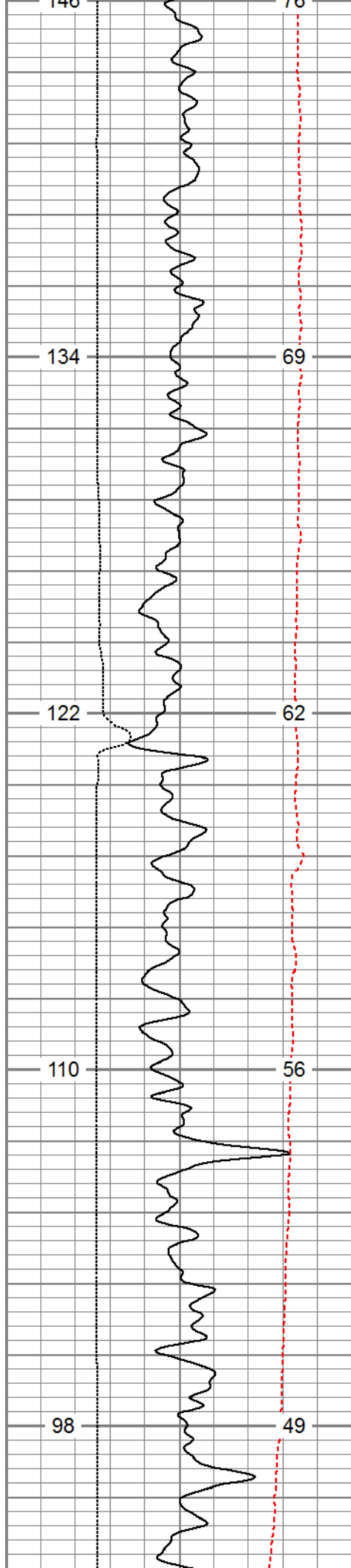






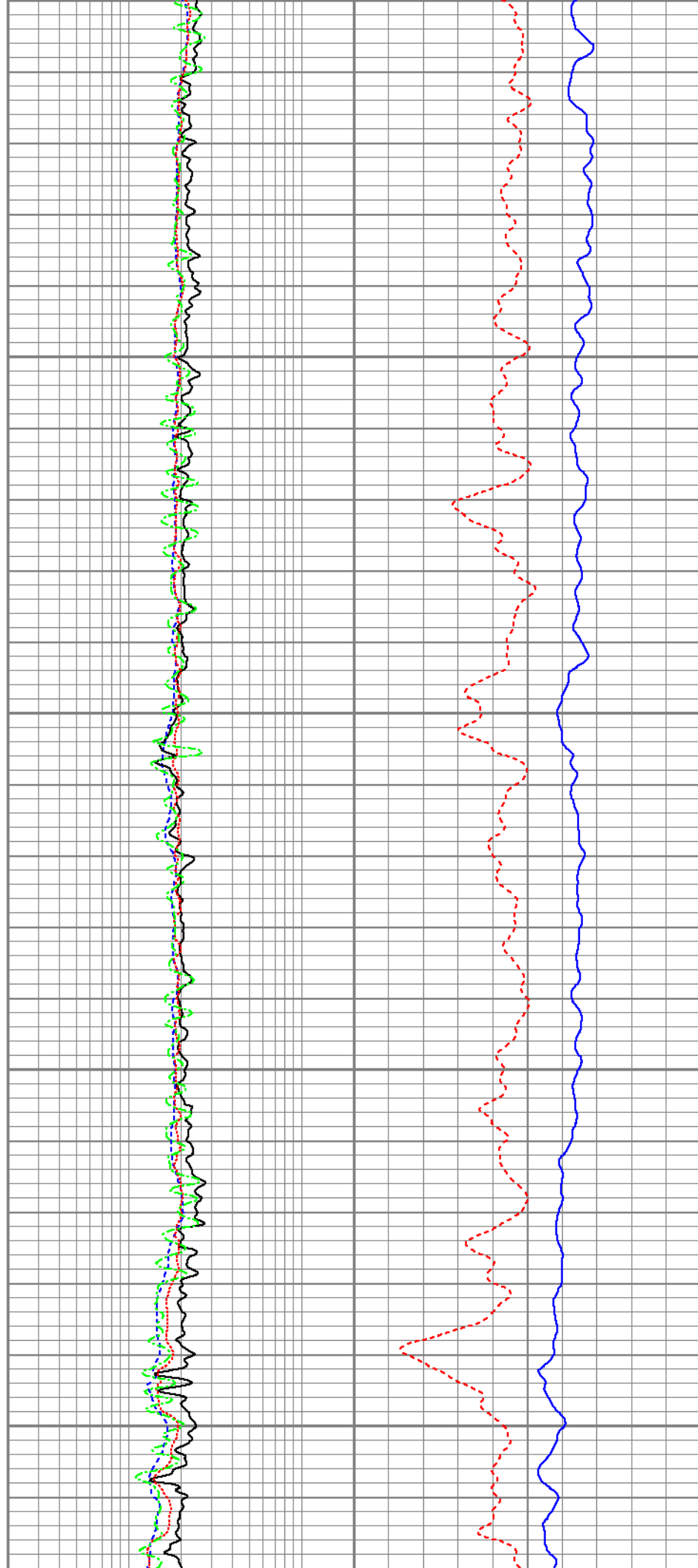
Database File: 13675.db
 Dataset Pathname: main
 Presentation Format: pdce
 Dataset Creation: Thu Aug 14 18:20:07 2014
 Charted by: Depth in Feet scaled 1:240

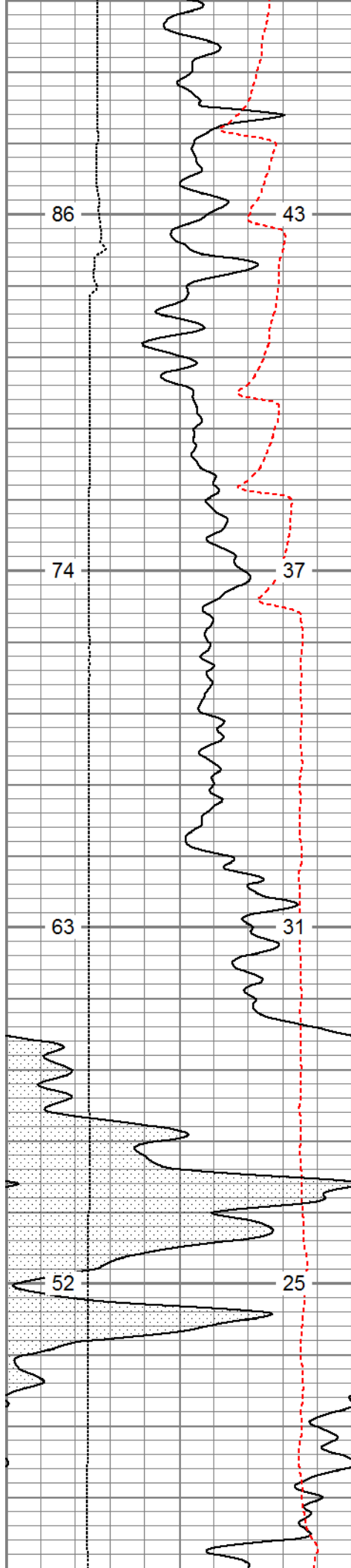




2100

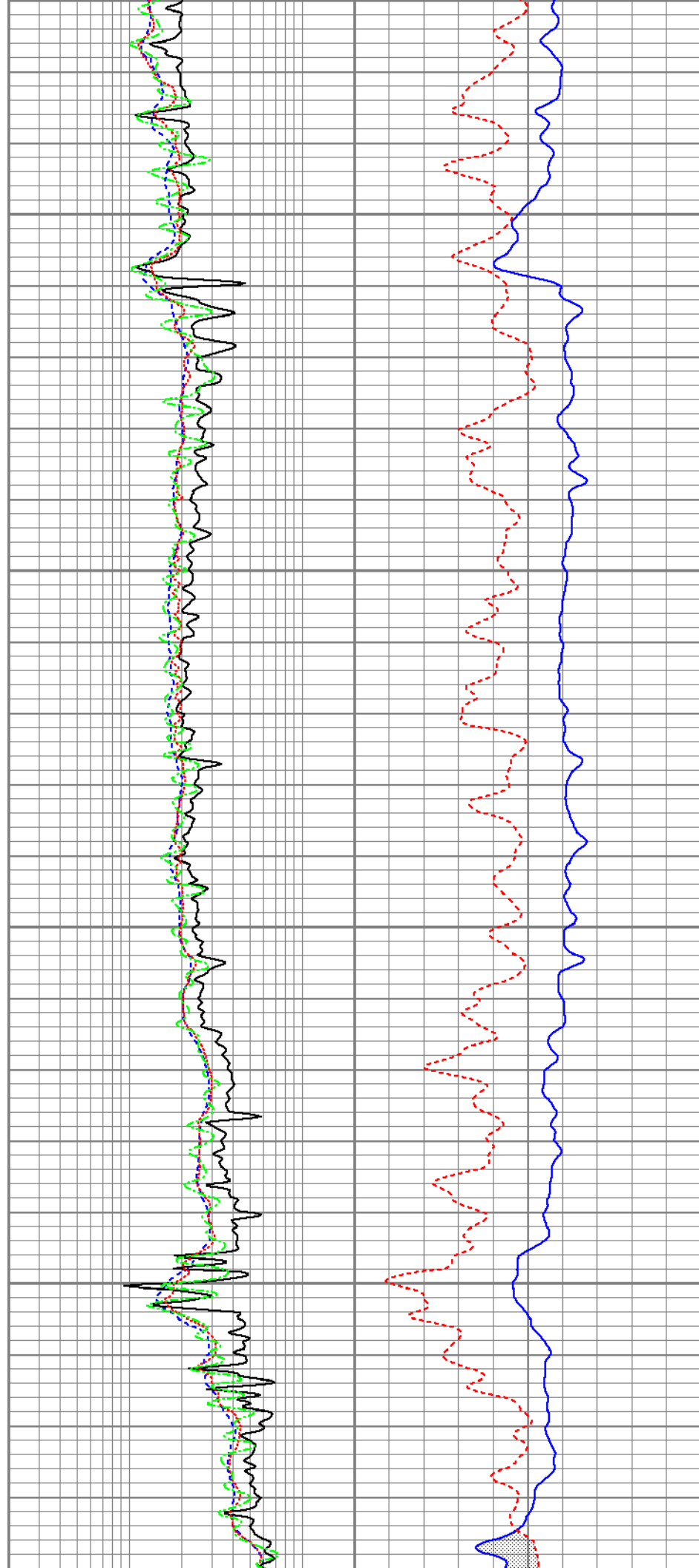
2200

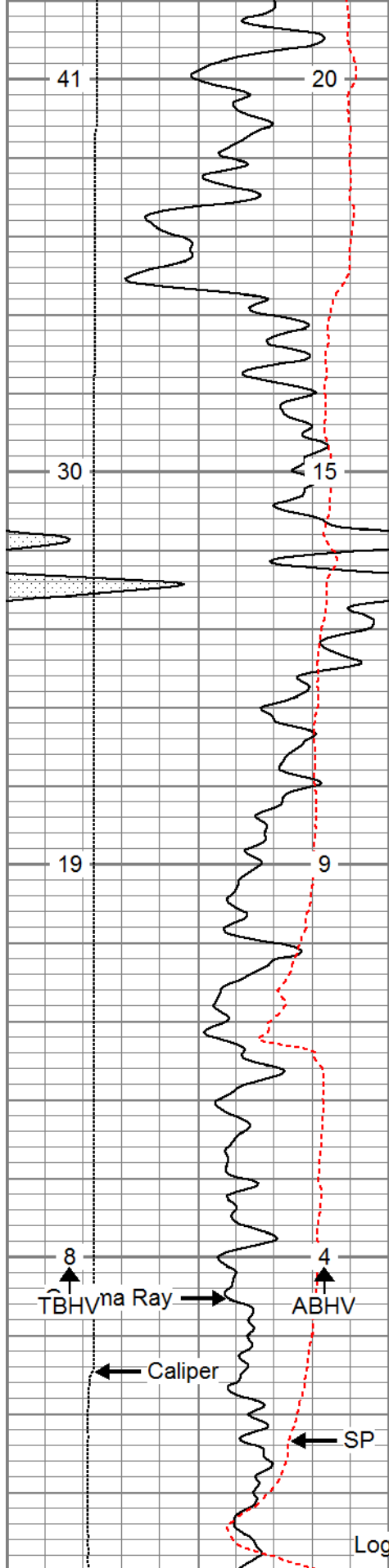




2300

2400



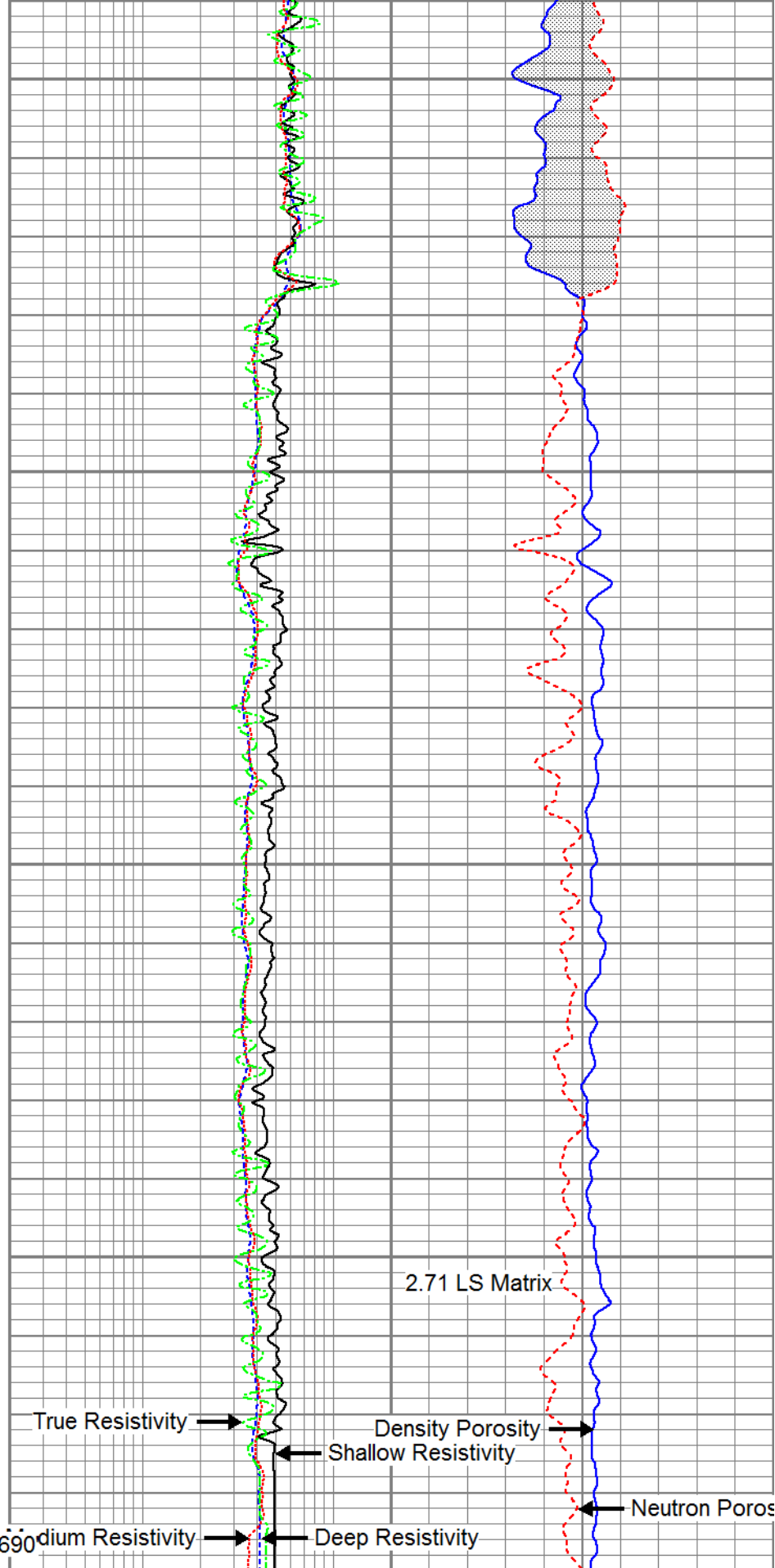


2500

2600

Logger's TD: 2690

0	Gamma Ray (GAPI)	200
0	SP (mV)	200
4	Caliper (in)	14



True Resistivity

Density Porosity

Shallow Resistivity

Neutron Porosity

Medium Resistivity

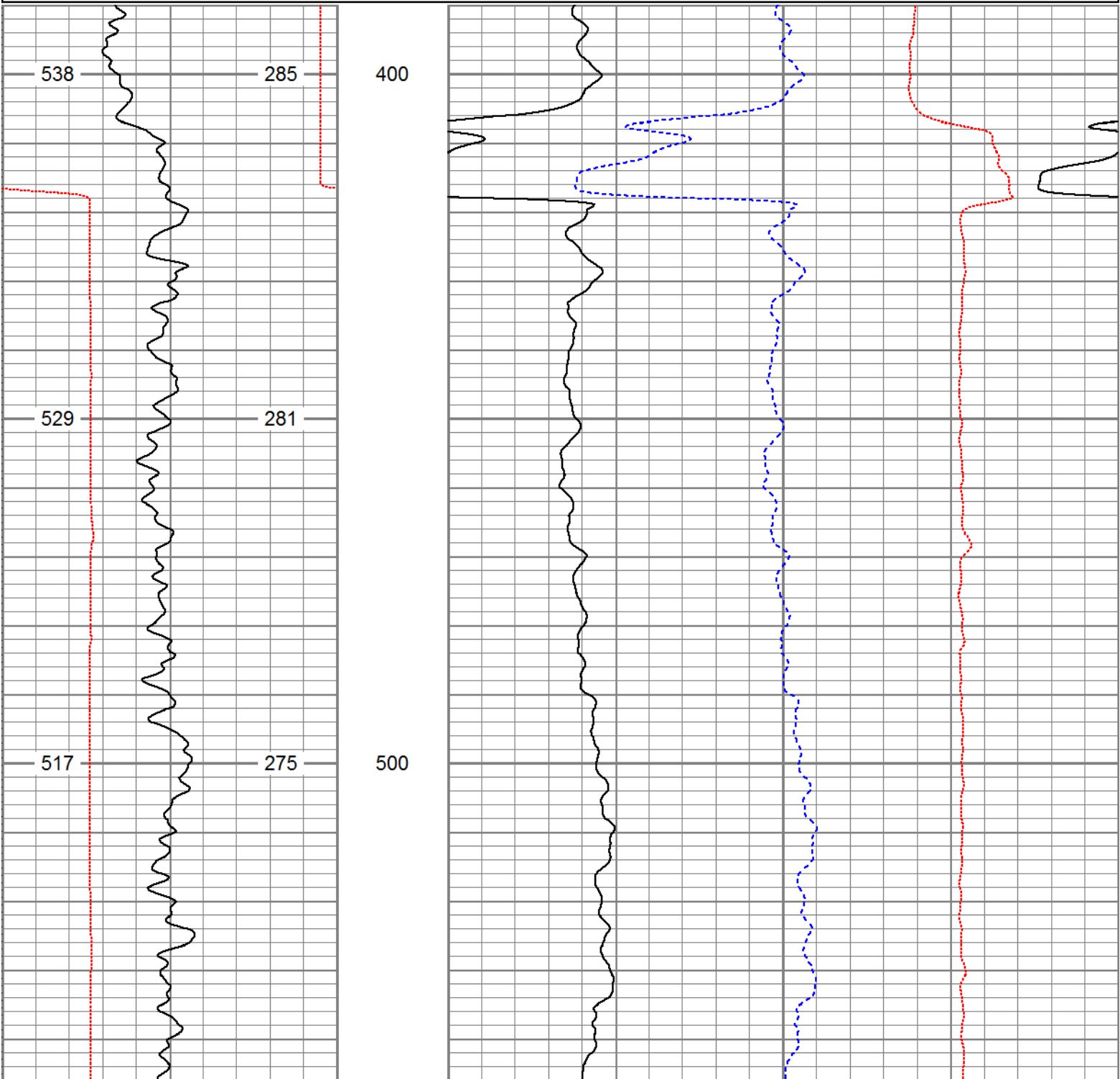
Deep Resistivity

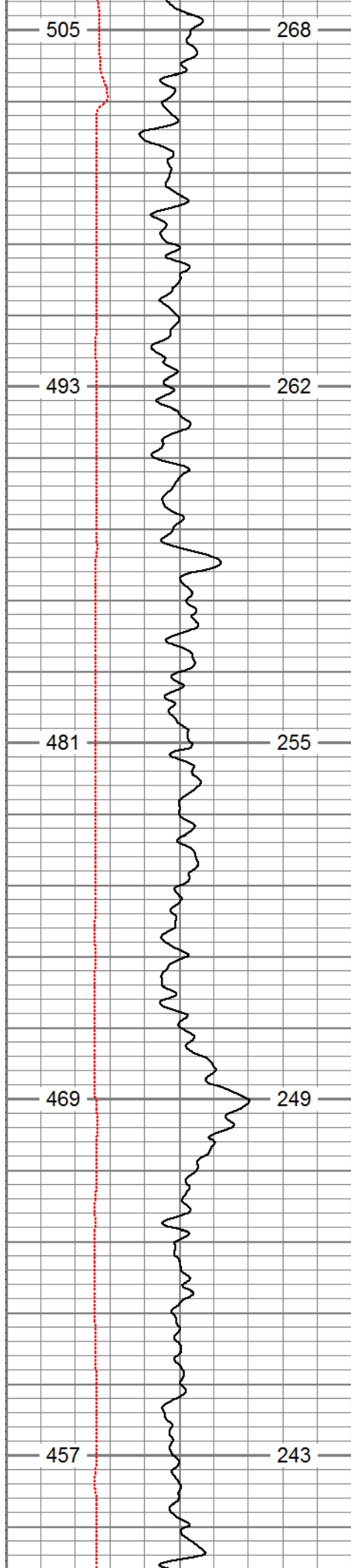
0.2	Deep Resistivity (Ohm-m)	20	60	Density Porosity (pu)	0
0.2	Shallow Resistivity (Ohm-m)	20	60	Neutron Porosity (pu)	0
0.2	Medium Resistivity (Ohm-m)	20			

BHV (cu. ft. (ft3)	ABHV (cu. ft. (ft3)	0.2 True Resistivity (Ohm-m) 20
-----------------------	------------------------	---------------------------------

Database File:	13675.db
Dataset Pathname:	main
Presentation Format:	cdl60
Dataset Creation:	Thu Aug 14 18:20:07 2014
Charted by:	Depth in Feet scaled 1:240

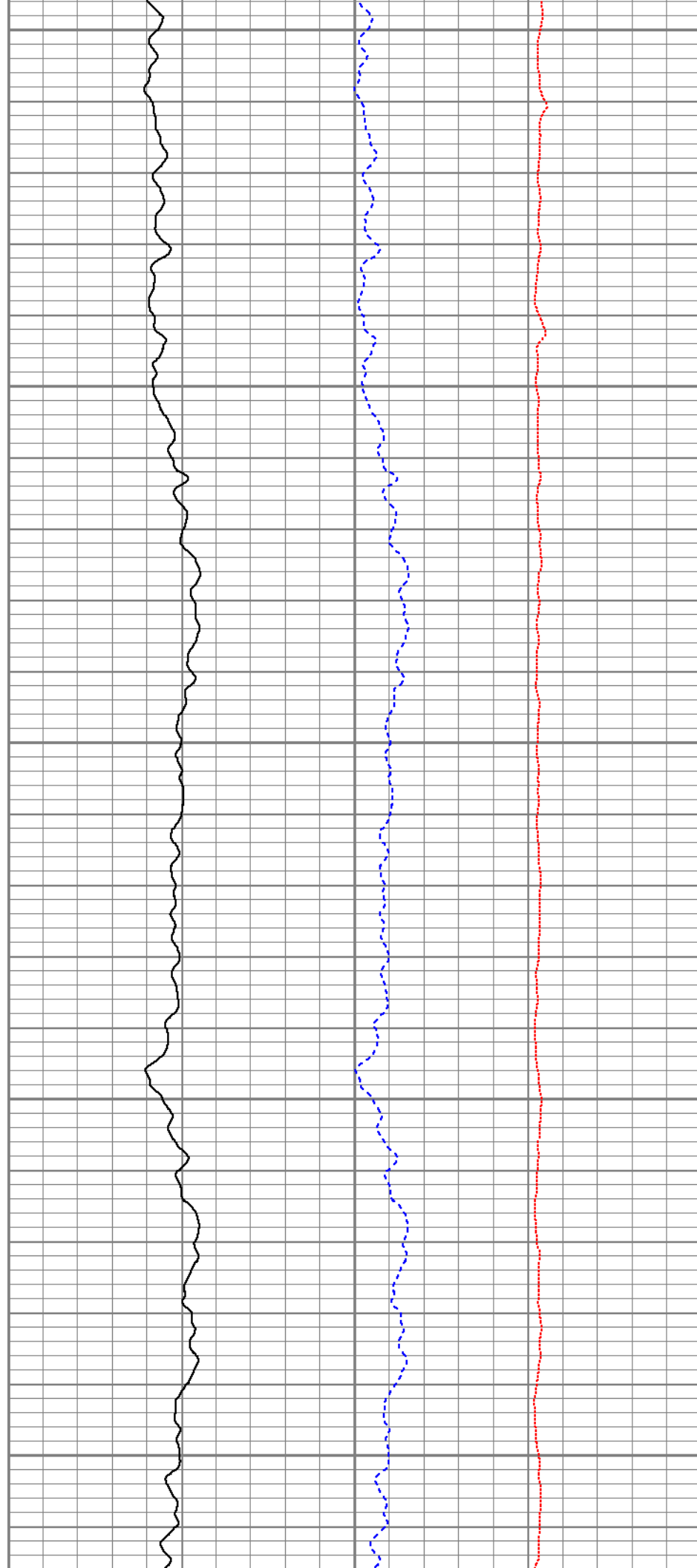
4	Caliper (in)	14	2	Bulk Density (g/cc)	3
0	Gamma Ray (GAPI)	200	60	Density Porosity (pu)	0
TBHV (ft3)	ABHV (ft3)		-0.5	Corr (g/cc)	0.5

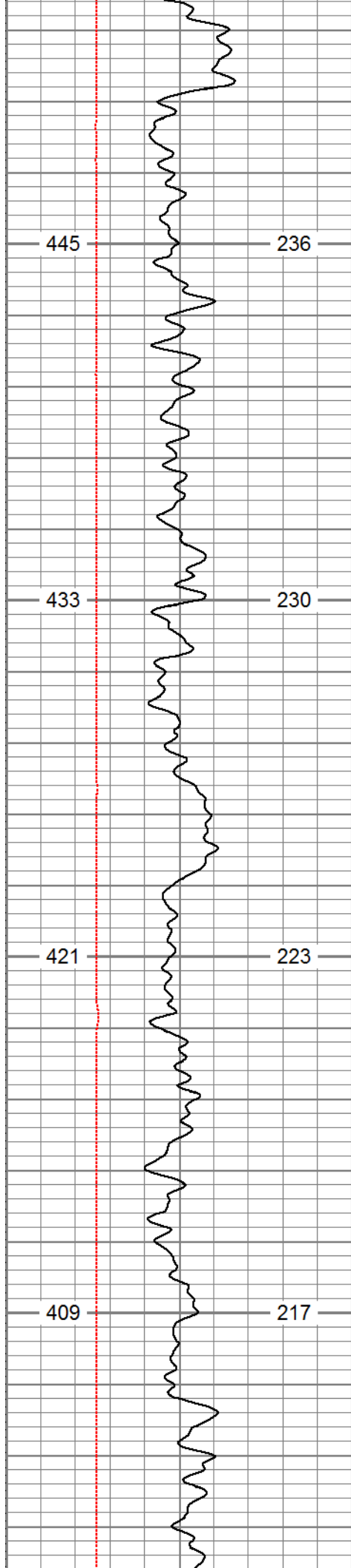




600

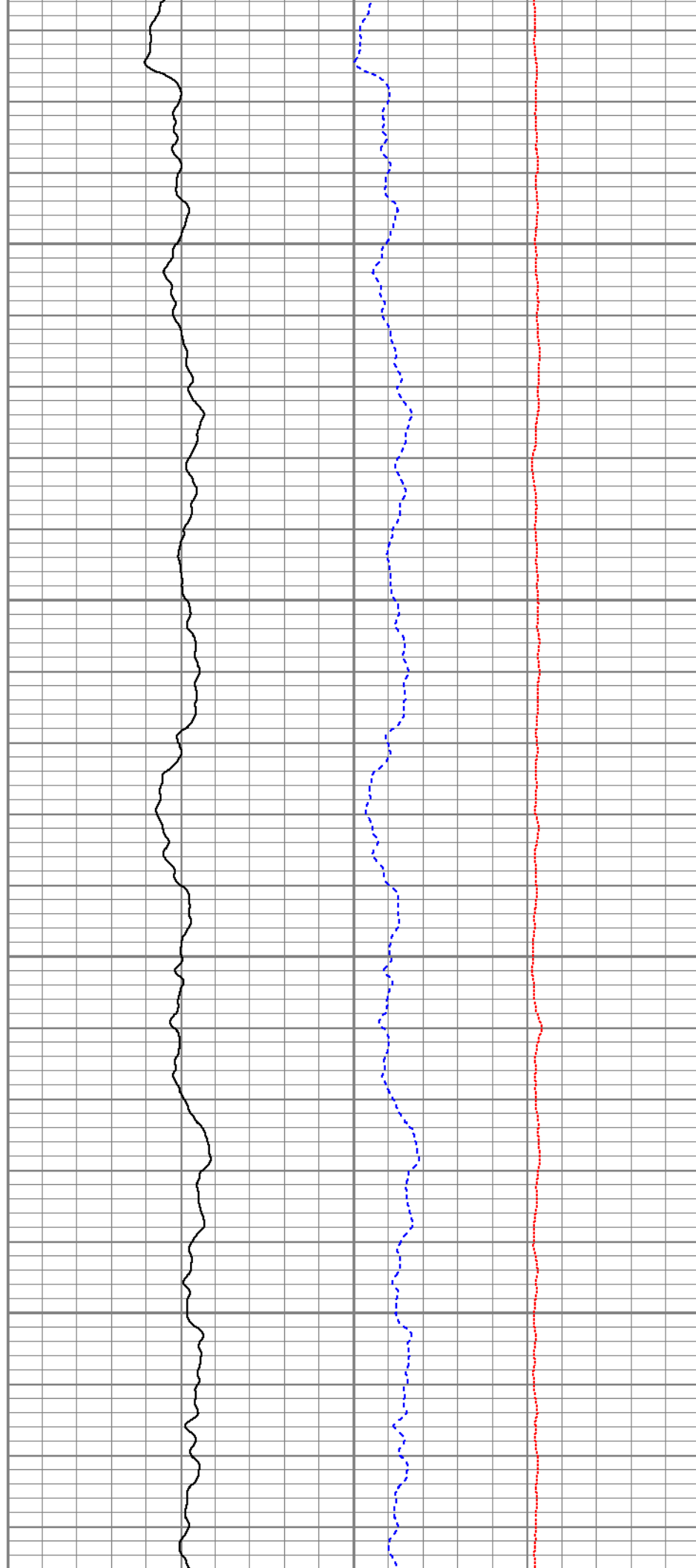
700

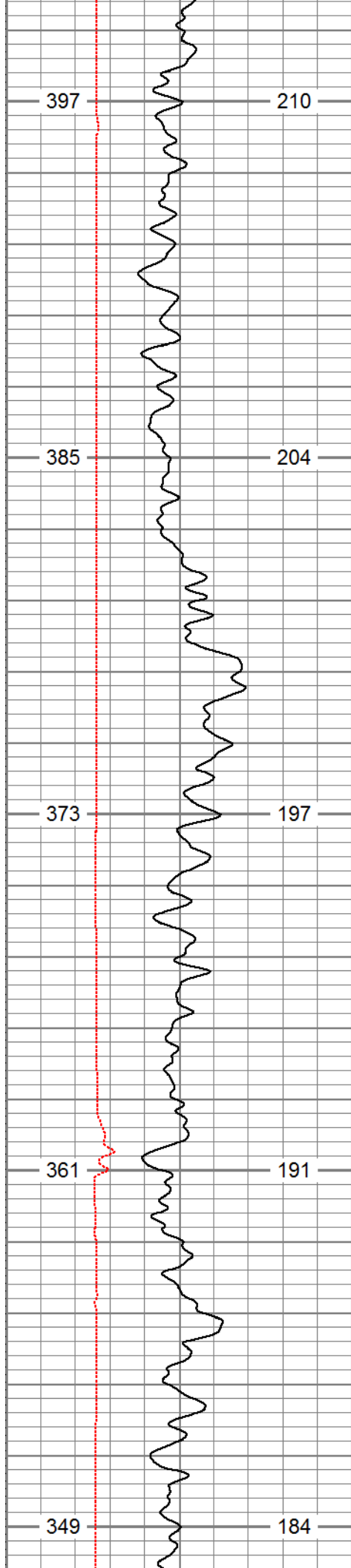




800

900

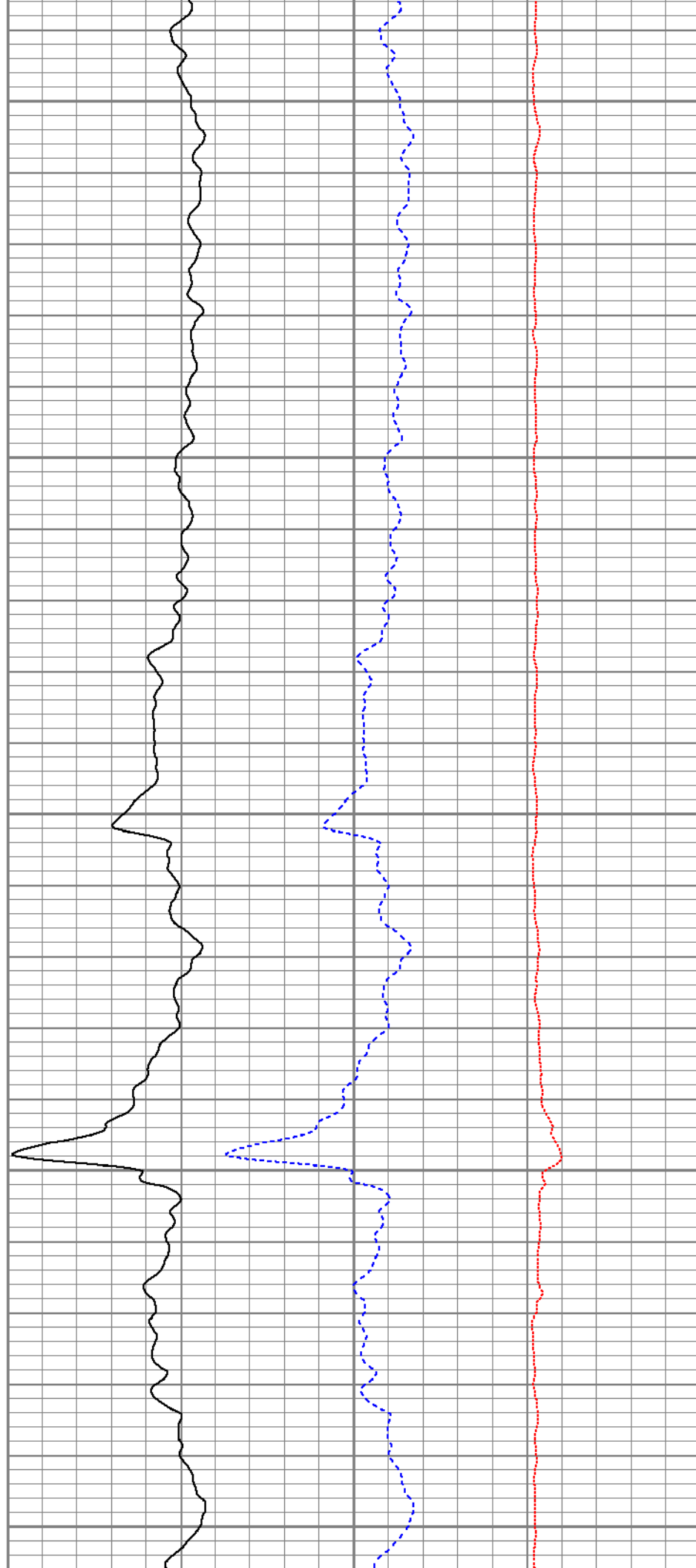


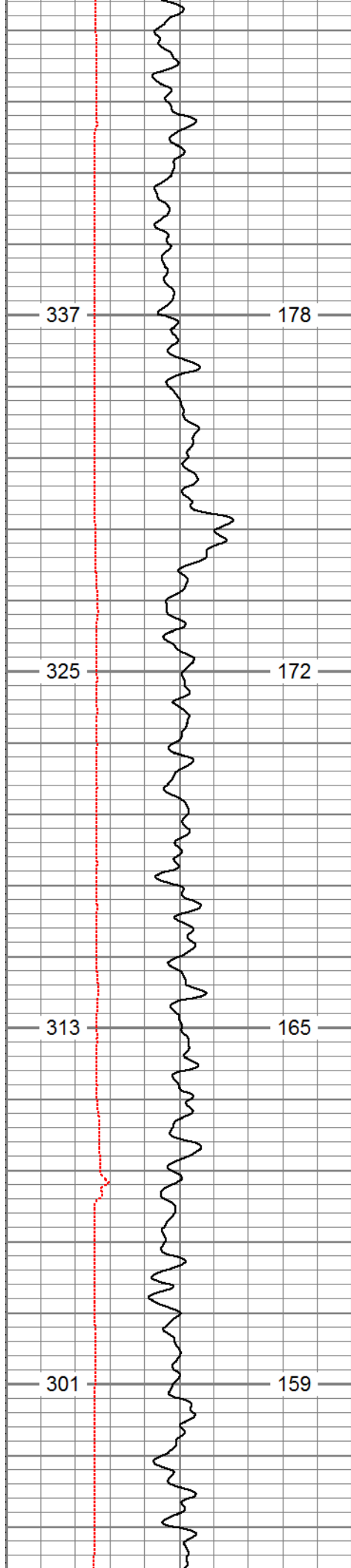


1000

1100

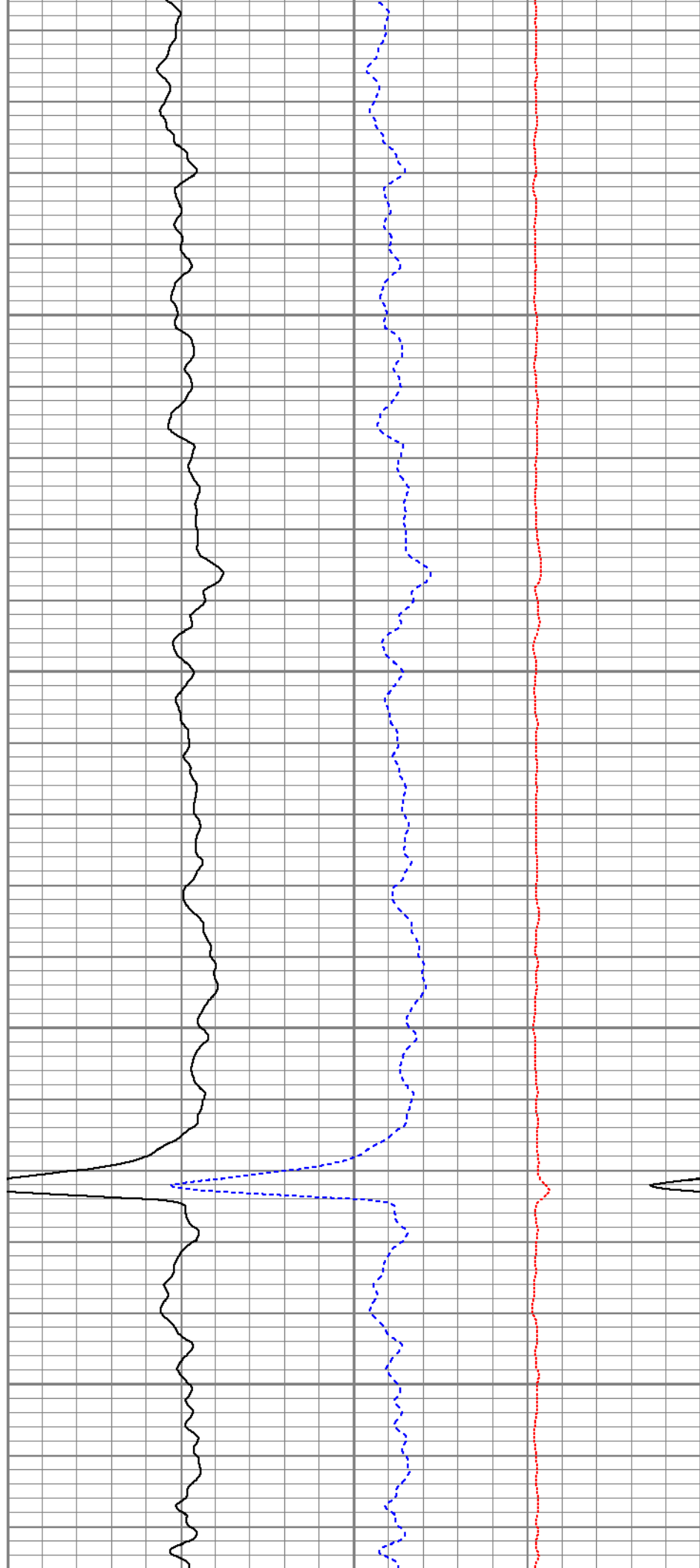
1200

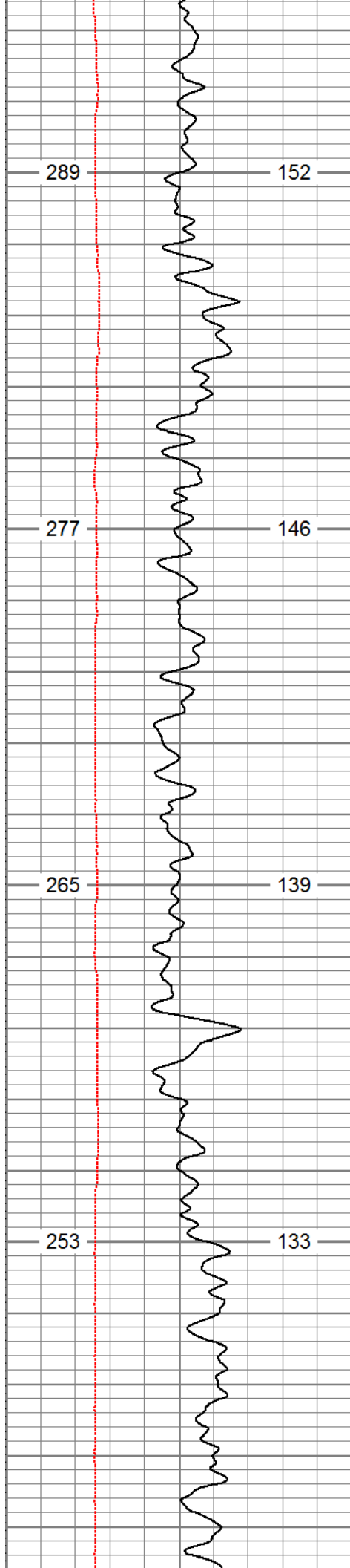




1300

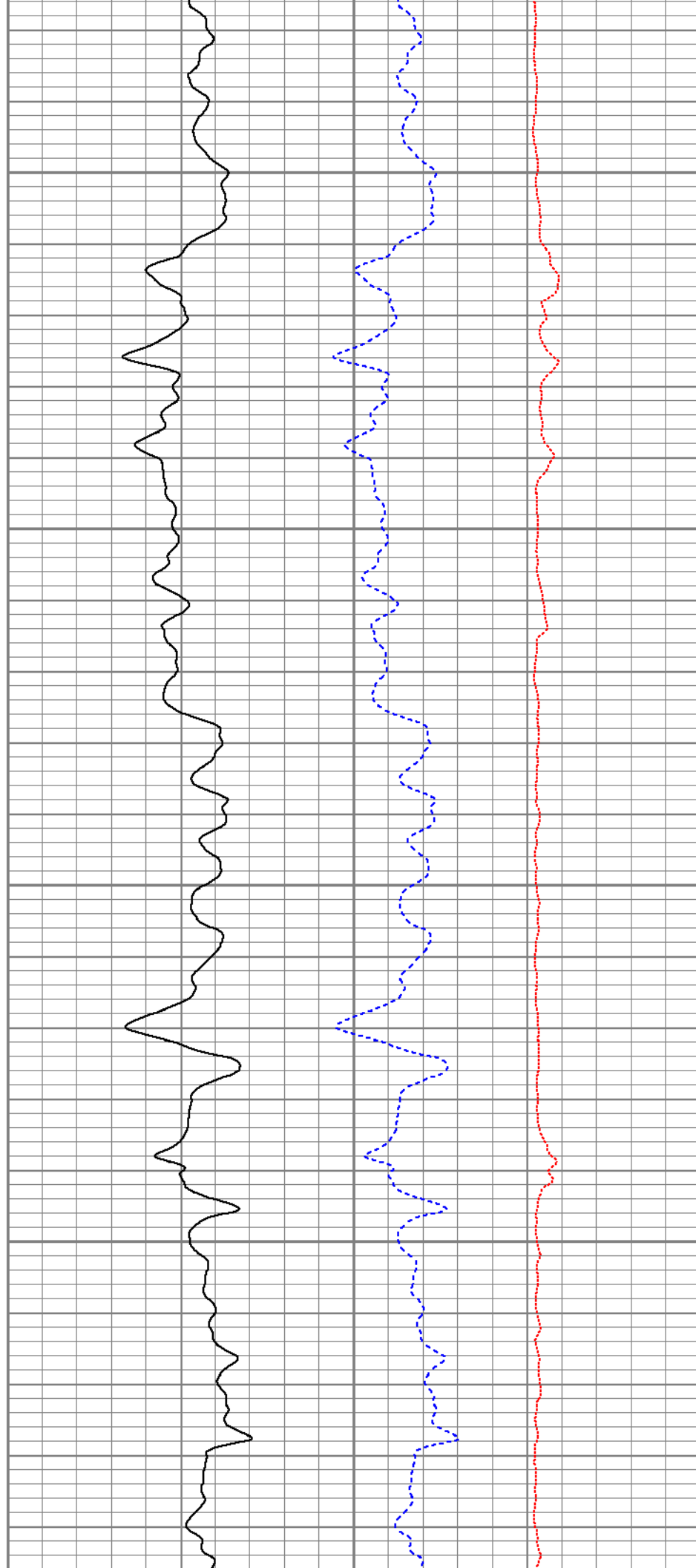
1400

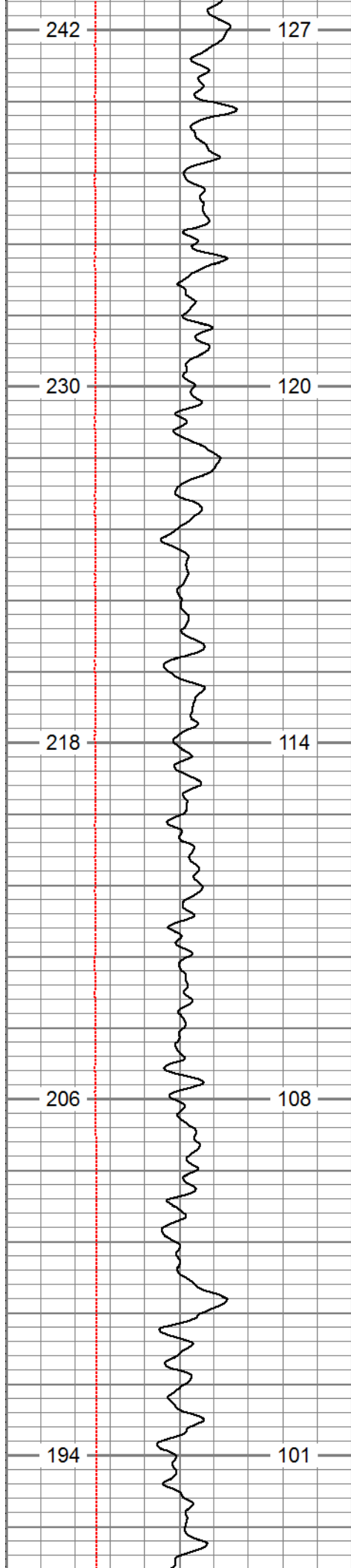




1500

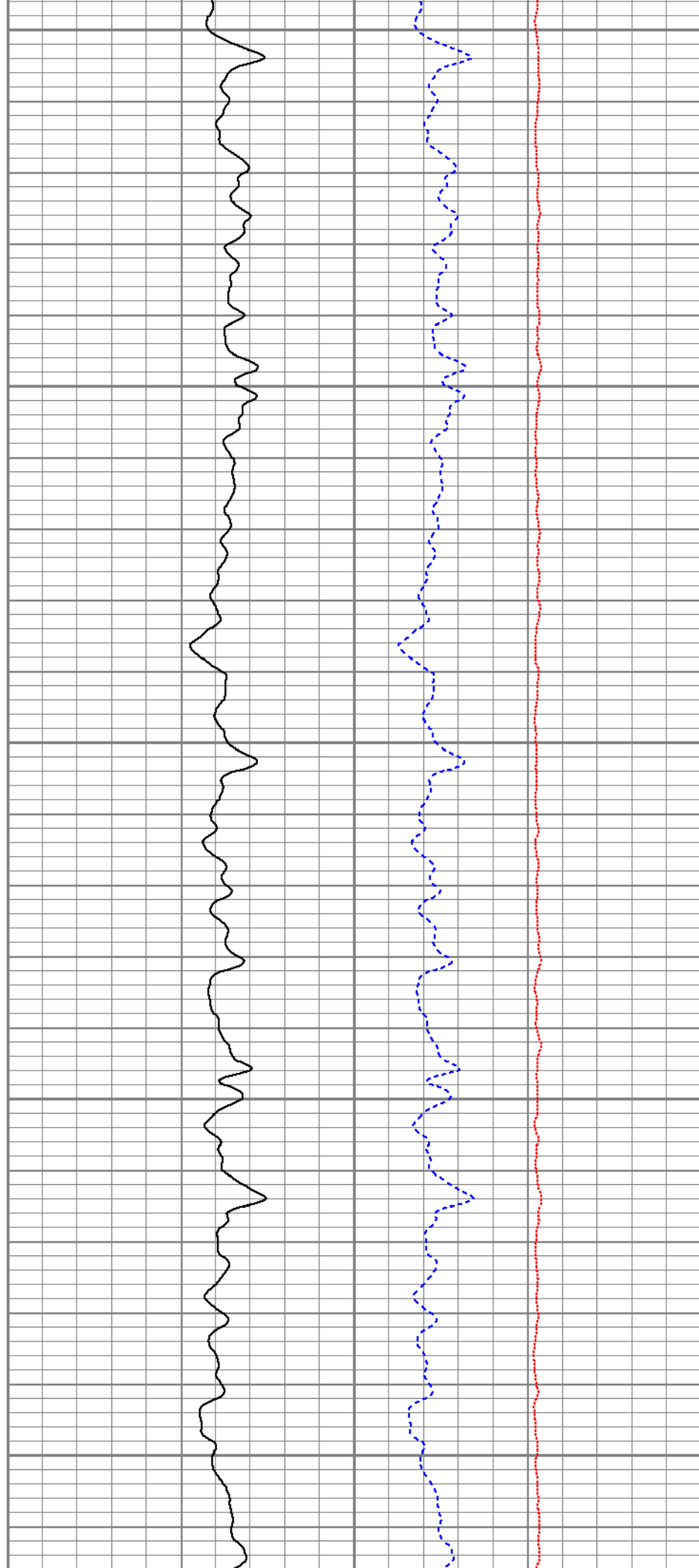
1600

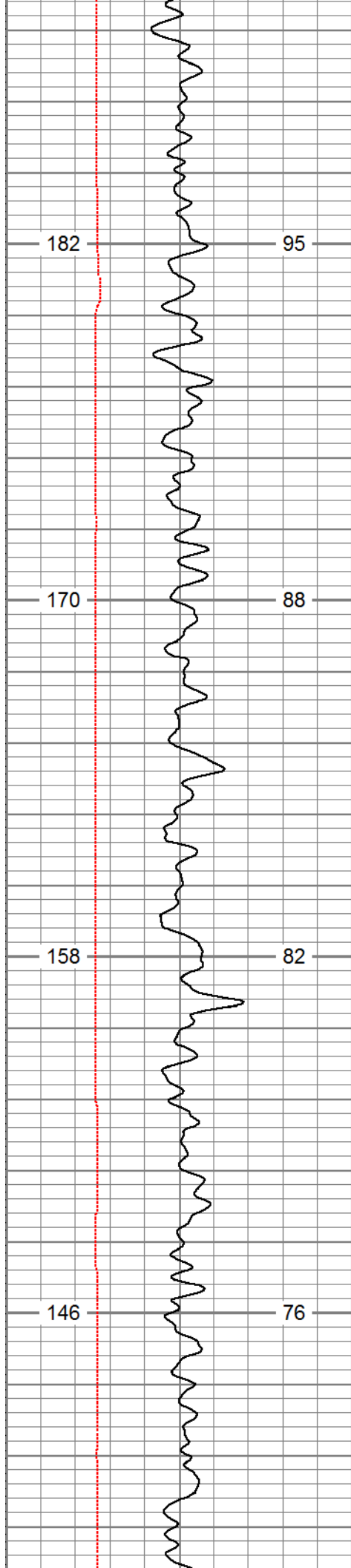




1700

1800

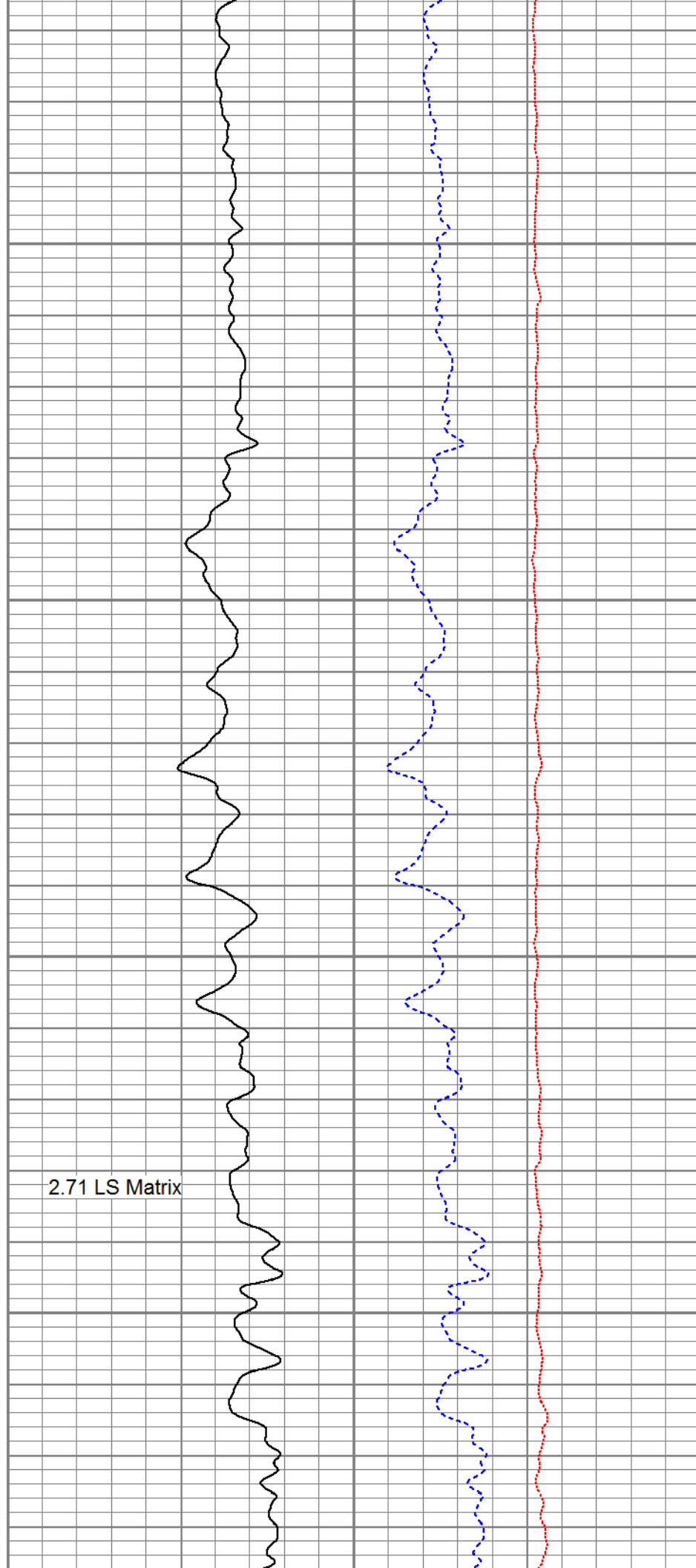


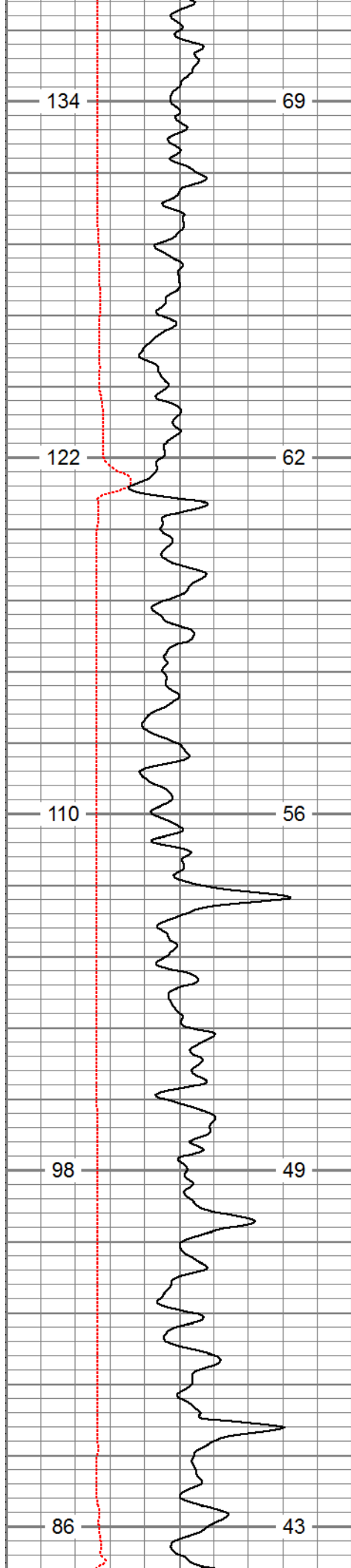


1900

2000

2.71 LS Matrix

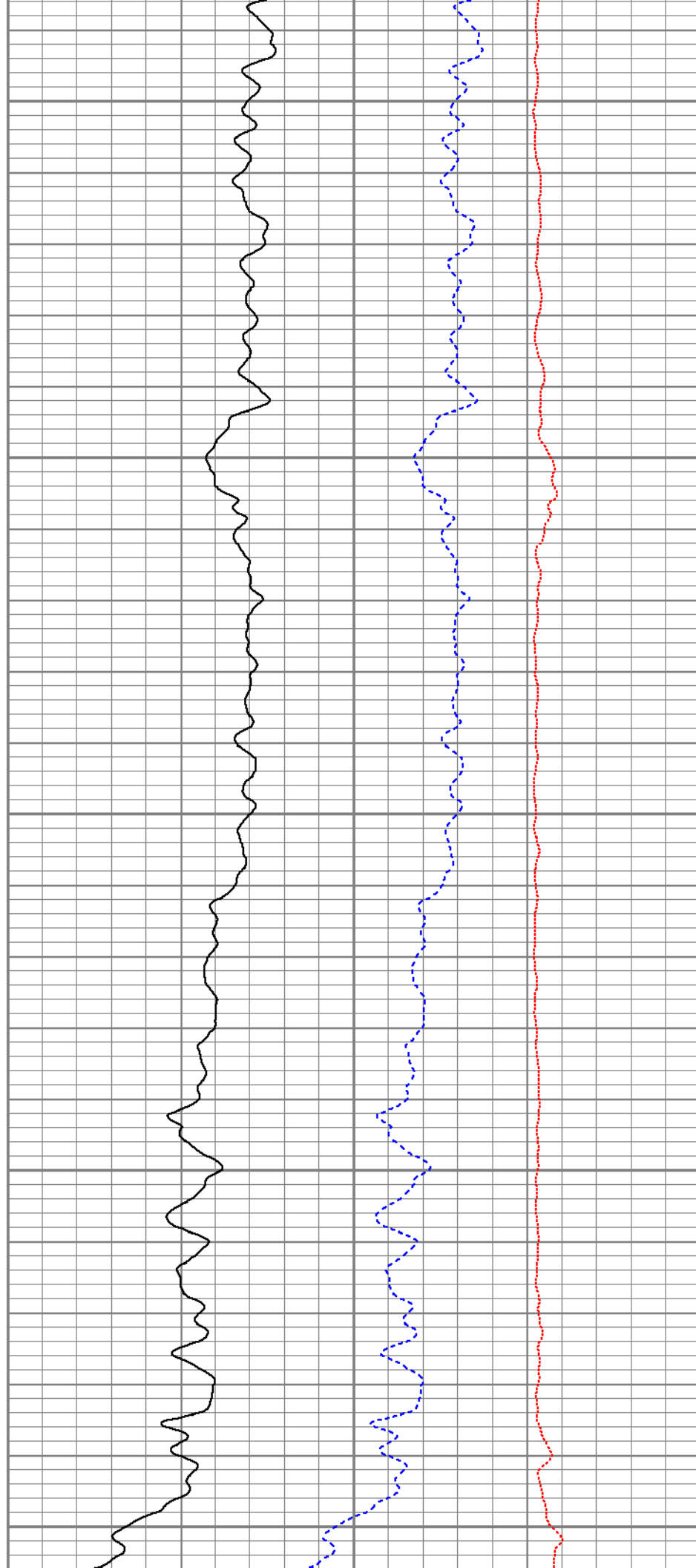


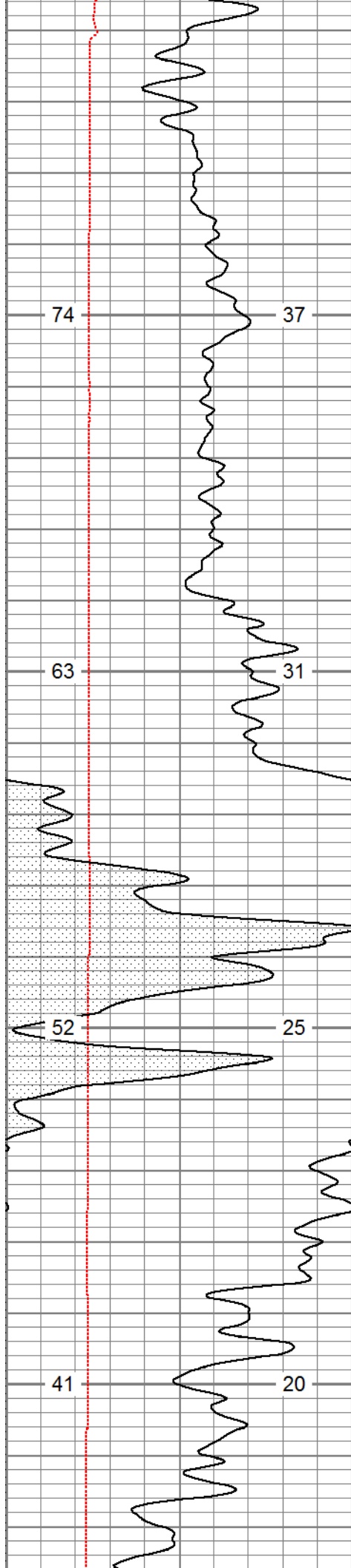


2100

2200

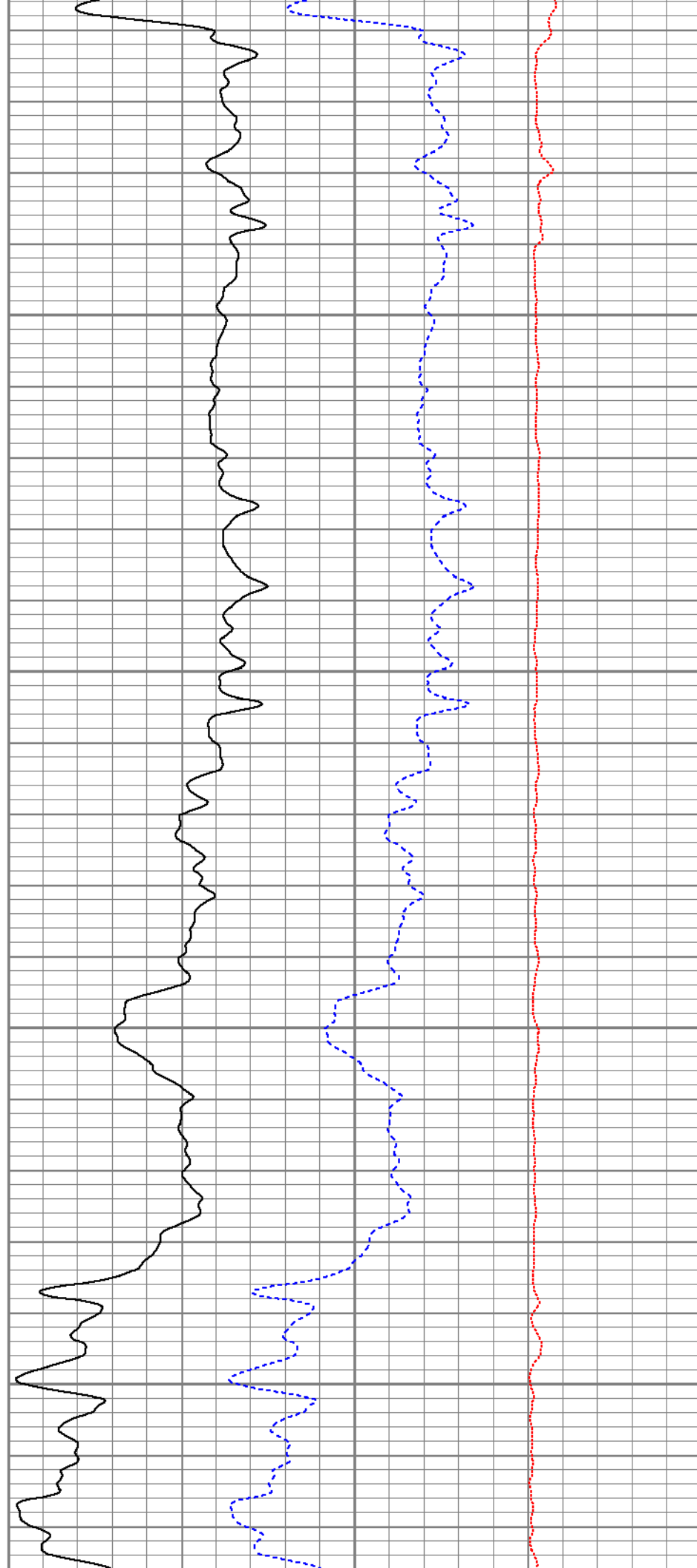
2300

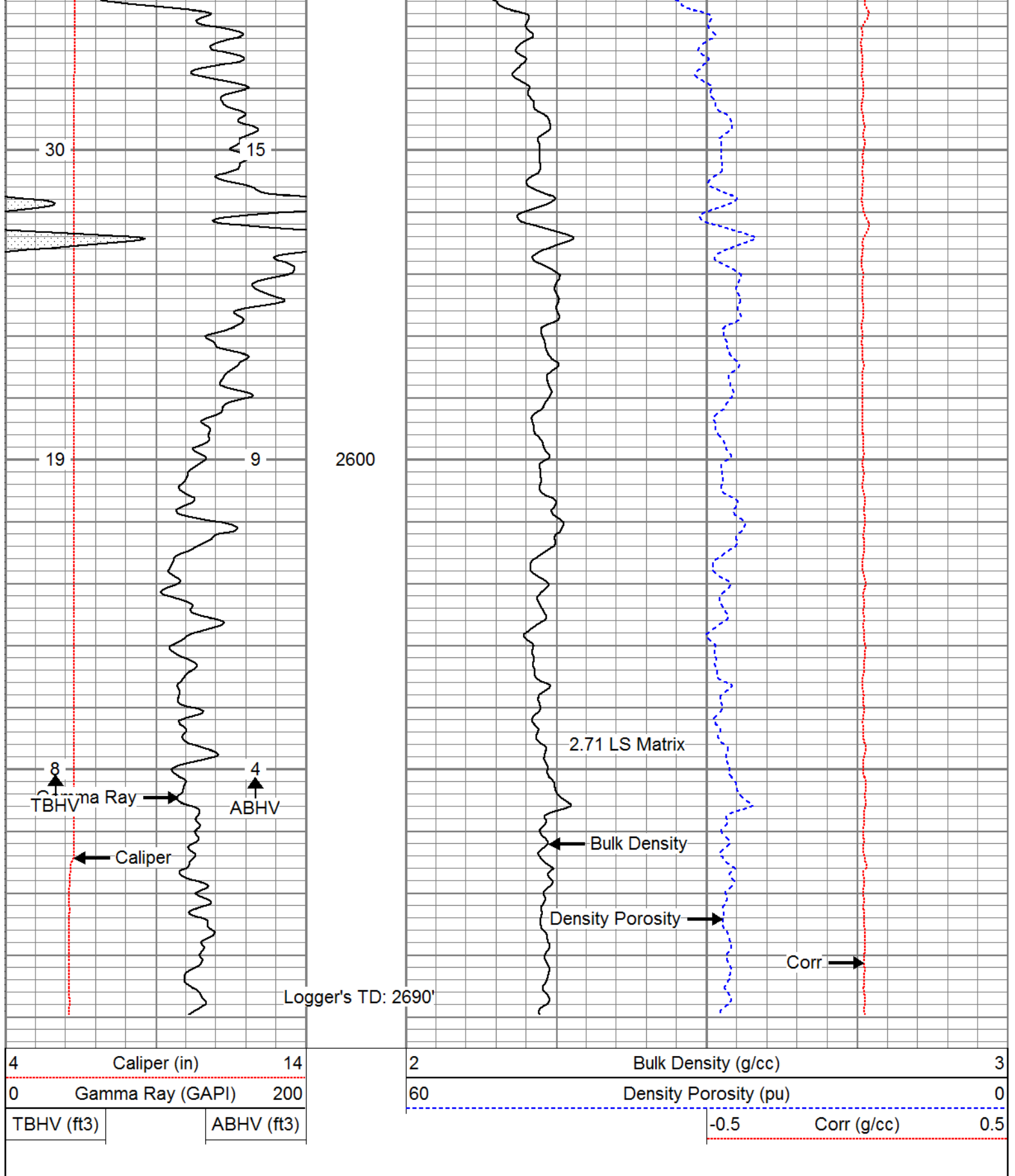




2400

2500





Calibration Report

Database File: 13675.db
Dataset Pathname: pass1
Dataset Creation: Thu Aug 14 14:33:53 2014

Dual Induction Calibration Report

Serial-Model:
Surface Cal Performed:

1011-PSI

Loop:	Readings		References		Results	
	Air	Loop	Air	Loop	m	b
Deep	0.000	1.000	0.000	1.000	mmho/m	0.510
Medium	0.000	1.000	0.000	1.000	mmho/m	-28.000

Compensated Density Calibration Report

Serial-Model:
Master Calibration Performed:

770-PSI
Thu Jul 25 22:55:00 2013

Master Calibration						
	Density		Far Detector		Near Detector	
Magnesium	1.750	g/cc	6052.27		9575.17	cps
Aluminum	2.690	g/cc	1090.90		5872.16	cps
	Size		Reading			
Small Ring		in				
Medium Ring		in				
Large Ring		in				

Compensated Neutron Calibration Report

		Serial Number:		856	
		Tool Model:		PSI	
CALIBRATION					
Detector		Readings		Target	
				Normalization	
Short Space		1.00	cps	1.00	cps
Long Space		1.00	cps	1.00	cps
		1.9000			
		2.1700			

Gamma Ray Calibration Report

Serial Number:	939
Tool Model:	PSI
Performed:	Wed Aug 06 01:11:14 2014
Calibrator Value:	1.0 GAPI
Background Reading:	0.0 cps
Calibrator Reading:	1.0 cps
Sensitivity:	0.6200 GAPI/cps