

T7N, R80W, 6th P.M.

EE3 LLC

GL0 Brass Cap 1939
0.5' Above Ground
Elev. = 8091'

Monument
not found

S89°57'48"E 5301.59' (Meas.)

GL0 Brass Cap 1939
0.5' Above Ground

Well location, GREGORY #5-09H, located as shown in the SW1/4SW1/4 of Section 9, T7N, R80W, 6th P.M., Jackson County, Colorado.

BASIS OF BEARINGS

BASIS OF BEARINGS IS TRUE NORTH USING GPS

BASIS OF ELEVATION

SPOT ELEVATION AT THE NW CORNER OF SECTION 9, T7N, R80W, 6TH PM, TAKEN FROM THE COALMONT QUADRANGLE, USGS 7.5 MIN QUAD (TOPOGRAPHIC MAP) WITH SAID ELEVATION MARKED AS BEING 8091 FEET.

GRAPHIC SCALE 1"=1000'

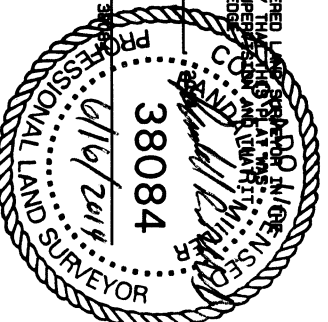
1000 0 1000



I, RANDALL R. MILLER, BEING A REGISTERED LAND SURVEYOR IN THE STATE OF COLORADO, DO HEREBY CERTIFY THAT THE FOREGOING WAS MADE BY ME AND/OR UNDER MY DIRECT SUPERVISION AND THAT IT IS ACCURATE TO THE BEST OF MY KNOWLEDGE.

DATED THIS _____ DAY OF _____

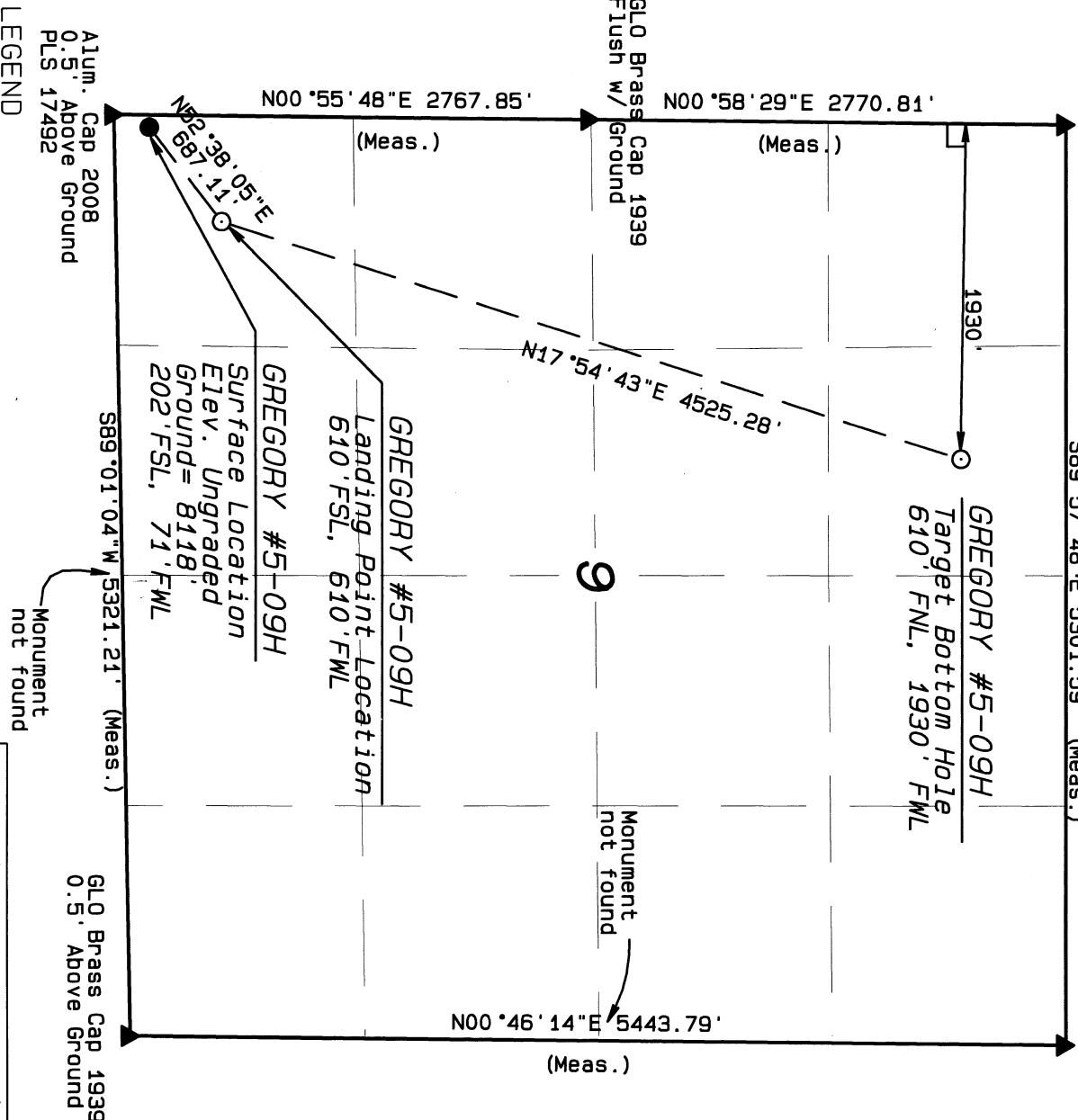
RANDALL R. MILLER, COLORADO PLS NO. 38084



NORTH PARK ENGINEERING & CONSULTING, INC.

P.O. BOX 395
MAIDEN, CO 80480
(970) 723-3725

DATE OF FIELD WORK: SEPT 12, 2013 DRAWING COMPLETION: JUNE 16, 2014
SURVEYED BY: RAS DRAWN BY: TAT CHECKED BY: RRM
SHEET 1 OF 1 JOB NO.: 13-029



LEGEND

90° SYMBOL
FOUND CORNER
PROPOSED WELL
PROPOSED BHL/LPL

NAD 83 (TARGET BOTTOM HOLE)	NAD 83 (SURFACE LOCATION)
LATITUDE=40.598275°N LONGITUDE=106.380952°W	LATITUDE=40.585258°N LONGITUDE=106.387760°W
	PDOP = 1.398
NAD 83 (LANDING POINT LOCATION)	
LATITUDE=40.586418°N LONGITUDE=106.385808°W	