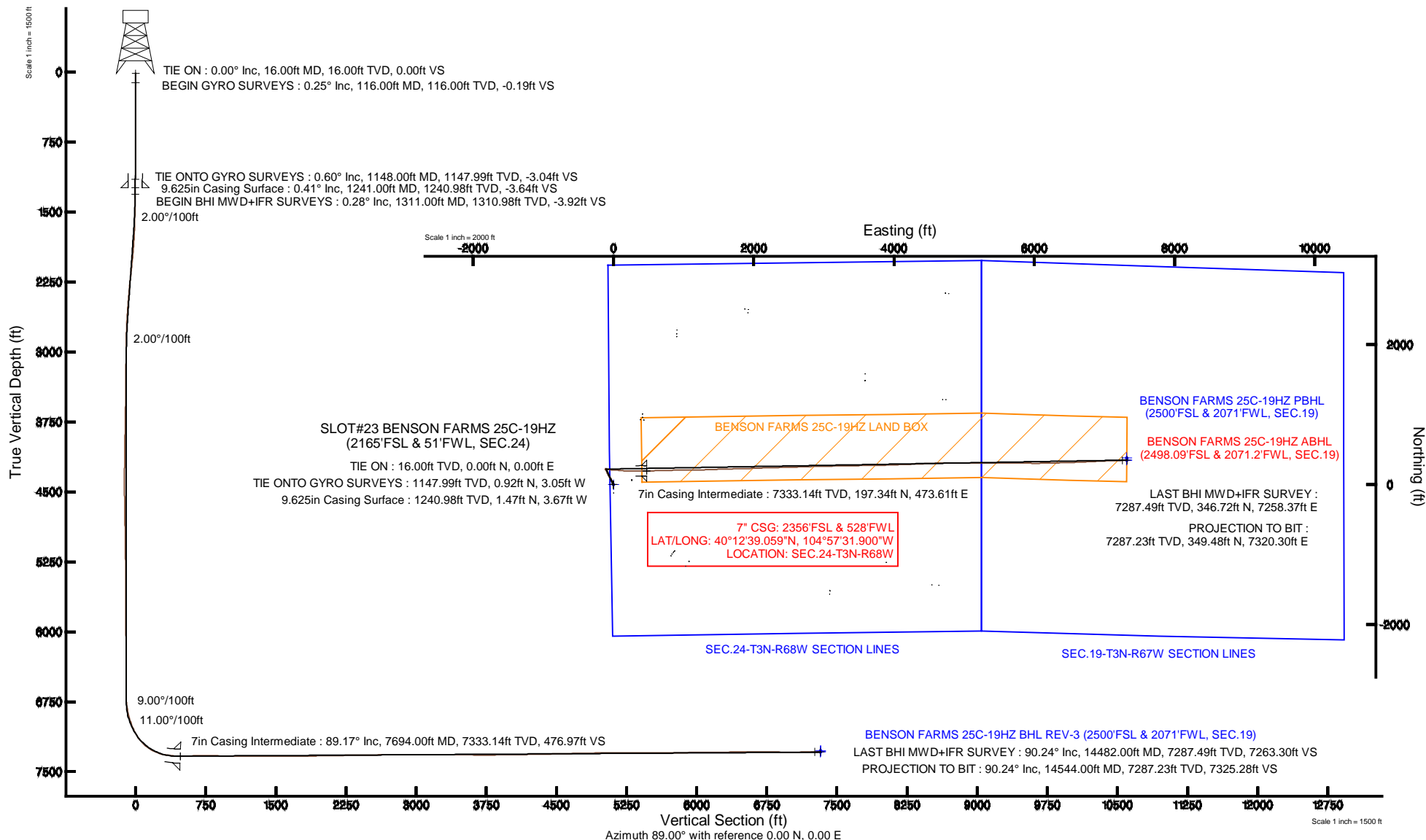


KERR-MCGEE OIL & GAS ONSHORE LP

Location: COLORADO Slot: SLOT#23 BENSON FARMS 25C-19HZ (2165'FSL & 51'FWL, SEC.24)
 Field: WELD COUNTY (KERR MCGEE) Well: BENSON FARMS 25C-19HZ
 Facility: SEC.24-T3N-R68W Wellbore: BENSON FARMS 25C-19HZ PWB

Plot reference wellpath is BENSON FARMS 25C-19HZ (REV-B.0) PWP

True vertical depths are referenced to XTREME 24 (16' RKB) (RKB)	Grid System: NAD83 / Lambert Colorado SP, Northern Zone (501), US feet
Measured depths are referenced to XTREME 24 (16' RKB) (RKB)	North Reference: True north
XTREME 24 (16' RKB) (RKB) to Mean Sea Level: 4973 feet	Scale: True distance
Mean Sea Level to Mud line (At Slot: SLOT#23 BENSON FARMS 25C-19HZ (2165'FSL & 51'FWL, SEC.24)): 0 feet	Depths are in feet
Coordinates are in feet referenced to Slot	Created by: robale01 on 30/Jul/2014



REFERENCE WELLPATH IDENTIFICATION			
Operator	KERR-MCGEE OIL & GAS ONSHORE LP	Slot	SLOT#23 BENSON FARMS 25C-19HZ (2165'FSL & 51'FWL, SEC.24)
Area	COLORADO	Well	BENSON FARMS 25C-19HZ
Field	WELD COUNTY (KERR MCGEE)	Wellbore	BENSON FARMS 25C-19HZ AWB
Facility	SEC.24-T3N-R68W		

REPORT SETUP INFORMATION			
Projection System	NAD83 / Lambert Colorado SP, Northern Zone (501), US feet	Software System	WellArchitect® 4.0.0
North Reference	True	User	Robiale01
Scale	0.999957	Report Generated	30/Jul/2014 at 14:08
Convergence at slot	n/a	Database/Source file	WellArchitectDB/BENSON_FARMS_25C-19HZ_AWB.xml

WELLPATH LOCATION						
	Local coordinates		Grid coordinates		Geographic coordinates	
	North[ft]	East[ft]	Easting[US ft]	Northing[US ft]	Latitude	Longitude
Slot Location	-1577.87	-3577.01	3150659.93	1319915.78	40°12'37.109"N	104°57'38.005"W
Facility Reference Pt			3154226.88	1321515.82	40°12'52.704"N	104°56'51.900"W
Field Reference Pt			3197771.84	1268891.29	40°04'09.600"N	104°47'36.000"W

WELLPATH DATUM			
Calculation method	Minimum curvature	XTREME 24 (16' RKB) (RKB) to Facility Vertical Datum	4973.00ft
Horizontal Reference Pt	Slot	XTREME 24 (16' RKB) (RKB) to Mean Sea Level	4973.00ft
Vertical Reference Pt	XTREME 24 (16' RKB) (RKB)	XTREME 24 (16' RKB) (RKB) to Mud Line at Slot (SLOT#23 BENSON FARMS 25C-19HZ (2165'FSL & 51'FWL, SEC.24))	4973.00ft
MD Reference Pt	XTREME 24 (16' RKB) (RKB)	Section Origin	N 0.00, E 0.00 ft
Field Vertical Reference	Mean Sea Level	Section Azimuth	87.27°

Actual Wellpath Report

BENSON FARMS 25C-19HZ AWP

Page 2 of 6

REFERENCE WELLPATH IDENTIFICATION

Operator	KERR-MCGEE OIL & GAS ONSHORE LP	Slot	SLOT#23 BENSON FARMS 25C-19HZ (2165'FSL & 51'FWL, SEC.24)
Area	COLORADO	Well	BENSON FARMS 25C-19HZ
Field	WELD COUNTY (KERR MCGEE)	Wellbore	BENSON FARMS 25C-19HZ AWB
Facility	SEC.24-T3N-R68W		

WELLPATH DATA (122 stations) † = interpolated/extrapolated station

MD [ft]	Inclination [°]	Azimuth [°]	TVD [ft]	Vert Sect [ft]	North [ft]	East [ft]	Latitude	Longitude	DLS [°/100ft]	Comments
0.00†	0.000	240.010	0.00	0.00	0.00	0.00	40°12'37.109"N	104°57'38.005"W	0.00	
16.00	0.000	240.010	16.00	0.00	0.00	0.00	40°12'37.109"N	104°57'38.005"W	0.00	TIE ON
116.00	0.250	240.010	116.00	-0.19	-0.11	-0.19	40°12'37.108"N	104°57'38.007"W	0.25	BEGIN GYRO SURVEYS
216.00	0.100	132.440	216.00	-0.33	-0.28	-0.31	40°12'37.106"N	104°57'38.009"W	0.30	
316.00	0.150	65.740	316.00	-0.14	-0.28	-0.13	40°12'37.106"N	104°57'38.007"W	0.14	
416.00	0.090	267.270	416.00	-0.10	-0.23	-0.09	40°12'37.107"N	104°57'38.006"W	0.24	
516.00	0.290	318.320	516.00	-0.34	-0.05	-0.34	40°12'37.109"N	104°57'38.009"W	0.24	
616.00	0.510	298.410	616.00	-0.88	0.35	-0.90	40°12'37.112"N	104°57'38.017"W	0.26	
716.00	0.520	269.260	715.99	-1.71	0.56	-1.74	40°12'37.115"N	104°57'38.027"W	0.26	
816.00	0.360	250.520	815.99	-2.47	0.45	-2.49	40°12'37.113"N	104°57'38.037"W	0.21	
916.00	0.140	201.730	915.99	-2.82	0.23	-2.83	40°12'37.111"N	104°57'38.042"W	0.29	
1016.00	0.120	7.110	1015.99	-2.85	0.22	-2.86	40°12'37.111"N	104°57'38.042"W	0.26	
1116.00	0.430	351.690	1115.99	-2.87	0.70	-2.91	40°12'37.116"N	104°57'38.042"W	0.32	
1148.00	0.600	309.580	1147.99	-3.00	0.92	-3.05	40°12'37.118"N	104°57'38.044"W	1.26	TIE ONTO GYRO SURVEYS
1311.00	0.280	322.450	1310.98	-3.86	1.78	-3.95	40°12'37.127"N	104°57'38.056"W	0.20	BEGIN BHI MWD+IFR SURVEYS
1406.00	2.330	330.210	1405.95	-4.87	3.64	-5.05	40°12'37.145"N	104°57'38.070"W	2.16	
1500.00	4.100	341.610	1499.80	-6.65	8.49	-7.06	40°12'37.193"N	104°57'38.096"W	1.99	
1594.00	5.760	344.170	1593.45	-8.63	16.22	-9.41	40°12'37.269"N	104°57'38.126"W	1.78	
1688.00	7.390	341.020	1686.83	-11.39	26.47	-12.66	40°12'37.371"N	104°57'38.168"W	1.78	
1782.00	8.870	340.570	1779.88	-15.16	39.02	-17.04	40°12'37.495"N	104°57'38.225"W	1.58	
1876.00	10.610	332.890	1872.53	-20.81	53.56	-23.40	40°12'37.638"N	104°57'38.307"W	2.31	
1971.00	11.670	333.630	1965.74	-28.28	69.96	-31.65	40°12'37.800"N	104°57'38.413"W	1.13	
2067.00	11.160	329.830	2059.84	-36.45	86.69	-40.63	40°12'37.966"N	104°57'38.529"W	0.95	
2159.00	11.690	326.430	2150.01	-45.33	102.15	-50.26	40°12'38.118"N	104°57'38.653"W	0.93	
2251.00	10.780	324.730	2240.25	-54.74	116.94	-60.38	40°12'38.265"N	104°57'38.783"W	1.05	
2343.00	10.600	328.030	2330.66	-63.50	131.14	-69.83	40°12'38.405"N	104°57'38.905"W	0.69	
2434.00	11.670	333.830	2419.94	-71.24	146.51	-78.32	40°12'38.557"N	104°57'39.015"W	1.70	
2526.00	11.010	338.450	2510.15	-77.78	163.03	-85.65	40°12'38.720"N	104°57'39.109"W	1.22	
2616.00	10.760	339.090	2598.53	-83.17	178.87	-91.81	40°12'38.877"N	104°57'39.188"W	0.31	
2708.00	9.100	342.460	2689.15	-87.71	193.83	-97.06	40°12'39.024"N	104°57'39.256"W	1.91	
2800.00	7.170	339.660	2780.22	-91.31	206.15	-101.25	40°12'39.146"N	104°57'39.310"W	2.14	
2891.00	5.720	347.190	2870.64	-93.82	215.90	-104.23	40°12'39.243"N	104°57'39.348"W	1.84	
2983.00	3.890	349.130	2962.32	-95.06	223.44	-105.84	40°12'39.317"N	104°57'39.369"W	2.00	
3075.00	1.790	353.890	3054.20	-95.59	227.93	-106.58	40°12'39.361"N	104°57'39.379"W	2.29	
3167.00	0.550	203.400	3146.19	-95.87	228.95	-106.91	40°12'39.372"N	104°57'39.383"W	2.48	
3443.00	0.880	242.290	3422.17	-98.37	226.75	-109.31	40°12'39.350"N	104°57'39.414"W	0.21	
3718.00	1.080	244.320	3697.13	-102.67	224.65	-113.52	40°12'39.329"N	104°57'39.468"W	0.07	
3995.00	0.990	242.490	3974.08	-107.25	222.41	-117.99	40°12'39.307"N	104°57'39.526"W	0.03	
4270.00	0.780	238.460	4249.05	-111.05	220.33	-121.69	40°12'39.286"N	104°57'39.574"W	0.08	
4460.00	0.830	358.750	4439.04	-112.15	221.03	-122.83	40°12'39.293"N	104°57'39.588"W	0.74	
4553.00	1.140	117.520	4532.03	-111.33	221.28	-122.02	40°12'39.296"N	104°57'39.578"W	1.83	
4823.00	0.940	108.640	4801.99	-106.95	219.33	-117.54	40°12'39.276"N	104°57'39.520"W	0.09	
5078.00	0.850	103.510	5056.96	-103.18	218.22	-113.72	40°12'39.265"N	104°57'39.471"W	0.05	
5334.00	0.640	111.840	5312.93	-100.06	217.24	-110.54	40°12'39.256"N	104°57'39.430"W	0.09	
5588.00	0.310	159.110	5566.93	-98.55	216.07	-108.98	40°12'39.244"N	104°57'39.410"W	0.19	

REFERENCE WELLPATH IDENTIFICATION

Operator	KERR-MCGEE OIL & GAS ONSHORE LP	Slot	SLOT#23 BENSON FARMS 25C-19HZ (2165'FSL & 51'FWL, SEC.24)
Area	COLORADO	Well	BENSON FARMS 25C-19HZ
Field	WELD COUNTY (KERR MCGEE)	Wellbore	BENSON FARMS 25C-19HZ AWB
Facility	SEC.24-T3N-R68W		

WELLPATH DATA (122 stations) † = interpolated/extrapolated station

MD [ft]	Inclination [°]	Azimuth [°]	TVD [ft]	Vert Sect [ft]	North [ft]	East [ft]	Latitude	Longitude	DLS [°/100ft]	Comments
5844.00	0.410	53.810	5822.92	-97.57	215.97	-108.00	40°12'39.243"N	104°57'39.397"W	0.22	
6099.00	0.520	46.630	6077.91	-95.94	217.30	-106.42	40°12'39.256"N	104°57'39.377"W	0.05	
6355.00	0.490	4.540	6333.90	-94.92	219.19	-105.49	40°12'39.275"N	104°57'39.365"W	0.14	
6611.00	0.570	356.080	6589.89	-94.80	221.55	-105.49	40°12'39.298"N	104°57'39.365"W	0.04	
6696.00	0.440	335.140	6674.89	-94.93	222.27	-105.65	40°12'39.305"N	104°57'39.367"W	0.26	
6781.00	5.840	103.470	6759.75	-90.90	221.56	-101.58	40°12'39.298"N	104°57'39.314"W	7.20	
6866.00	11.280	109.580	6843.77	-79.05	217.76	-89.54	40°12'39.261"N	104°57'39.159"W	6.48	
6951.00	16.360	94.260	6926.31	-59.46	214.08	-69.75	40°12'39.225"N	104°57'38.904"W	7.32	
7036.00	21.700	92.870	7006.64	-31.92	212.41	-42.09	40°12'39.208"N	104°57'38.548"W	6.30	
7121.00	27.760	94.360	7083.81	3.40	210.11	-6.63	40°12'39.185"N	104°57'38.090"W	7.17	
7206.00	37.960	93.420	7155.11	49.16	207.04	39.33	40°12'39.155"N	104°57'37.498"W	12.01	
7291.00	48.770	94.930	7216.82	107.00	202.72	97.44	40°12'39.112"N	104°57'36.749"W	12.78	
7376.00	60.030	93.330	7266.22	175.51	197.82	166.27	40°12'39.064"N	104°57'35.862"W	13.33	
7461.00	71.880	89.210	7300.81	252.80	196.23	243.71	40°12'39.048"N	104°57'34.864"W	14.62	
7546.00	81.160	89.470	7320.60	335.31	197.18	326.28	40°12'39.057"N	104°57'33.799"W	10.92	
7631.00	85.430	90.090	7330.52	419.63	197.50	410.68	40°12'39.061"N	104°57'32.712"W	5.08	
7648.00	87.070	90.400	7331.63	436.57	197.43	427.64	40°12'39.060"N	104°57'32.493"W	9.82	
7694.00†	89.165	89.816	7333.14	482.48	197.34	473.61	40°12'39.059"N	104°57'31.900"W	4.73	7" CASING POINT
7767.00	92.490	88.890	7332.09	555.42	198.17	546.59	40°12'39.067"N	104°57'30.960"W	4.73	
7860.00	91.600	88.900	7328.77	648.32	199.96	639.51	40°12'39.085"N	104°57'29.762"W	0.96	
8045.00	88.420	87.870	7328.74	833.26	205.17	824.41	40°12'39.136"N	104°57'27.379"W	1.81	
8137.00	89.470	89.280	7330.43	925.21	207.46	916.36	40°12'39.159"N	104°57'26.194"W	1.91	
8229.00	89.750	89.770	7331.06	1017.14	208.22	1008.36	40°12'39.166"N	104°57'25.008"W	0.61	
8321.00	89.850	89.440	7331.38	1109.06	208.85	1100.35	40°12'39.173"N	104°57'23.822"W	0.37	
8413.00	90.770	89.450	7330.88	1200.99	209.75	1192.35	40°12'39.181"N	104°57'22.636"W	1.00	
8505.00	89.810	87.960	7330.42	1292.96	211.83	1284.32	40°12'39.202"N	104°57'21.451"W	1.93	
8597.00	89.910	87.760	7330.64	1384.95	215.26	1376.25	40°12'39.236"N	104°57'20.266"W	0.24	
8781.00	88.830	87.900	7332.66	1568.93	222.23	1560.11	40°12'39.305"N	104°57'17.896"W	0.59	
8873.00	90.650	88.900	7333.08	1660.91	224.80	1652.07	40°12'39.330"N	104°57'16.711"W	2.26	
8964.00	90.680	89.060	7332.02	1751.86	226.42	1743.05	40°12'39.346"N	104°57'15.538"W	0.18	
9056.00	90.590	89.200	7331.00	1843.81	227.81	1835.03	40°12'39.360"N	104°57'14.353"W	0.18	
9148.00	90.580	87.610	7330.07	1935.78	230.37	1926.99	40°12'39.385"N	104°57'13.167"W	1.73	
9240.00	90.710	87.420	7329.03	2027.77	234.36	2018.89	40°12'39.424"N	104°57'11.983"W	0.25	
9424.00	91.360	87.870	7325.71	2211.74	241.92	2202.71	40°12'39.499"N	104°57'09.613"W	0.43	
9516.00	90.770	89.090	7324.00	2303.70	244.36	2294.66	40°12'39.523"N	104°57'08.428"W	1.47	
9608.00	90.740	88.650	7322.78	2395.65	246.17	2386.63	40°12'39.541"N	104°57'07.243"W	0.48	
9700.00	91.050	88.520	7321.35	2487.62	248.45	2478.59	40°12'39.563"N	104°57'06.057"W	0.37	
9870.00	89.970	88.410	7319.83	2657.57	253.00	2648.52	40°12'39.608"N	104°57'03.867"W	0.64	
10040.00	90.460	87.830	7319.20	2827.55	258.58	2818.43	40°12'39.663"N	104°57'01.677"W	0.45	
10210.00	89.570	88.940	7319.15	2997.51	263.37	2988.36	40°12'39.710"N	104°56'59.487"W	0.84	
10381.00	90.000	88.990	7319.79	3168.44	266.46	3159.33	40°12'39.740"N	104°56'57.283"W	0.25	
10551.00	90.950	88.890	7318.38	3338.36	269.60	3329.29	40°12'39.771"N	104°56'55.092"W	0.56	
10721.00	89.070	89.250	7318.35	3508.27	272.36	3499.26	40°12'39.798"N	104°56'52.902"W	1.13	
10891.00	89.100	89.350	7321.07	3678.14	274.44	3669.22	40°12'39.818"N	104°56'50.711"W	0.06	
10976.00	90.490	88.690	7321.37	3763.09	275.89	3754.21	40°12'39.833"N	104°56'49.615"W	1.81	

REFERENCE WELLPATH IDENTIFICATION			
Operator	KERR-MCGEE OIL & GAS ONSHORE LP	Slot	SLOT#23 BENSON FARMS 25C-19HZ (2165'FSL & 51'FWL, SEC.24)
Area	COLORADO	Well	BENSON FARMS 25C-19HZ
Field	WELD COUNTY (KERR MCGEE)	Wellbore	BENSON FARMS 25C-19HZ AWP
Facility	SEC.24-T3N-R68W		

WELLPATH DATA (122 stations)										
MD [ft]	Inclination [°]	Azimuth [°]	TVD [ft]	Vert Sect [ft]	North [ft]	East [ft]	Latitude	Longitude	DLS [°/100ft]	Comments
11061.00	91.230	88.710	7320.10	3848.06	277.82	3839.18	40°12'39.851"N	104°56'48.520"W	0.87	
11231.00	90.270	87.510	7317.87	4018.02	283.43	4009.06	40°12'39.907"N	104°56'46.331"W	0.90	
11401.00	91.540	88.050	7315.19	4187.99	290.01	4178.91	40°12'39.971"N	104°56'44.141"W	0.81	
11487.00	91.010	88.170	7313.27	4273.96	292.85	4264.84	40°12'39.999"N	104°56'43.034"W	0.63	
11657.00	91.040	87.300	7310.23	4443.92	299.56	4434.68	40°12'40.065"N	104°56'40.845"W	0.51	
11827.00	91.500	88.030	7306.46	4613.87	306.49	4604.50	40°12'40.133"N	104°56'38.656"W	0.51	
11912.00	91.440	88.350	7304.28	4698.83	309.17	4689.43	40°12'40.160"N	104°56'37.561"W	0.38	
11998.00	91.410	90.070	7302.14	4784.76	310.36	4775.39	40°12'40.171"N	104°56'36.453"W	2.00	
12082.00	90.770	90.580	7300.55	4868.62	309.88	4859.37	40°12'40.167"N	104°56'35.370"W	0.97	
12168.00	90.090	90.020	7299.90	4954.50	309.43	4945.37	40°12'40.162"N	104°56'34.262"W	1.02	
12253.00	90.580	90.640	7299.40	5039.37	308.94	5030.36	40°12'40.157"N	104°56'33.167"W	0.93	
12423.00	89.750	90.040	7298.91	5209.13	307.93	5200.36	40°12'40.147"N	104°56'30.975"W	0.60	
12507.00	89.540	89.510	7299.44	5293.04	308.26	5284.35	40°12'40.150"N	104°56'29.893"W	0.68	
12593.00	90.280	90.220	7299.57	5378.95	308.46	5370.35	40°12'40.151"N	104°56'28.784"W	1.19	
12678.00	90.220	89.740	7299.20	5463.86	308.49	5455.35	40°12'40.152"N	104°56'27.689"W	0.57	
12763.00	90.890	90.210	7298.38	5548.76	308.53	5540.35	40°12'40.152"N	104°56'26.593"W	0.96	
12846.00	91.290	90.250	7296.80	5631.63	308.20	5623.33	40°12'40.148"N	104°56'25.523"W	0.48	
12933.00	89.660	89.790	7296.08	5718.52	308.17	5710.33	40°12'40.148"N	104°56'24.402"W	1.95	
13018.00	90.460	90.770	7295.99	5803.41	307.75	5795.32	40°12'40.143"N	104°56'23.307"W	1.49	
13103.00	90.490	90.690	7295.28	5888.25	306.67	5880.31	40°12'40.133"N	104°56'22.211"W	0.10	
13188.00	90.400	90.580	7294.62	5973.10	305.73	5965.30	40°12'40.123"N	104°56'21.116"W	0.17	
13274.00	89.970	89.670	7294.34	6058.99	305.54	6051.30	40°12'40.121"N	104°56'20.007"W	1.17	
13359.00	90.790	88.560	7293.78	6143.94	306.85	6136.29	40°12'40.134"N	104°56'18.912"W	1.62	
13444.00	90.640	88.500	7292.72	6228.91	309.03	6221.25	40°12'40.155"N	104°56'17.817"W	0.19	
13614.00	92.180	88.870	7288.54	6398.80	312.93	6391.15	40°12'40.193"N	104°56'15.627"W	0.93	
13784.00	89.320	87.560	7286.31	6568.75	318.23	6561.03	40°12'40.245"N	104°56'13.437"W	1.85	
13955.00	89.530	87.530	7288.03	6739.73	325.55	6731.87	40°12'40.317"N	104°56'11.235"W	0.12	
14125.00	88.760	86.760	7290.56	6909.71	334.02	6901.64	40°12'40.400"N	104°56'09.047"W	0.64	
14211.00	90.300	88.160	7291.27	6995.70	337.83	6987.54	40°12'40.438"N	104°56'07.939"W	2.42	
14381.00	91.320	88.350	7288.87	7165.66	343.01	7157.45	40°12'40.488"N	104°56'05.750"W	0.61	
14482.00	90.240	87.440	7287.49	7266.64	346.72	7258.37	40°12'40.525"N	104°56'04.449"W	1.40	LAST BHI MWD+IFR SURVEY
14544.00	90.240	87.440	7287.23	7328.64	349.48	7320.30	40°12'40.552"N	104°56'03.650"W	0.00	PROJECTION TO BIT

REFERENCE WELLPATH IDENTIFICATION			
Operator	KERR-MCGEE OIL & GAS ONSHORE LP	Slot	SLOT#23 BENSON FARMS 25C-19HZ (2165'FSL & 51'FWL, SEC.24)
Area	COLORADO	Well	BENSON FARMS 25C-19HZ
Field	WELD COUNTY (KERR MCGEE)	Wellbore	BENSON FARMS 25C-19HZ AWB
Facility	SEC.24-T3N-R68W		

HOLE & CASING SECTIONS - Ref Wellbore: BENSON FARMS 25C-19HZ AWB Ref Wellpath: BENSON FARMS 25C-19HZ AWP									
String/Diameter	Start MD [ft]	End MD [ft]	Interval [ft]	Start TVD [ft]	End TVD [ft]	Start N/S [ft]	Start E/W [ft]	End N/S [ft]	End E/W [ft]
13.5in Open Hole	16.00	1251.00	1235.00	16.00	1250.98	0.00	0.00	1.52	-3.72
9.625in Casing Surface	16.00	1241.00	1225.00	16.00	1240.98	0.00	0.00	1.47	-3.67
8.75in Open Hole	1251.00	7705.00	6454.00	1250.98	7333.25	1.52	-3.72	197.39	484.61
7in Casing Intermediate	16.00	7694.00	7678.00	16.00	7333.14	0.00	0.00	197.34	473.61
6.125in Open Hole	7705.00	14544.00	6839.00	7333.25	7287.23	197.39	484.61	349.48	7320.30

WELLPATH COMPOSITION - Ref Wellbore: BENSON FARMS 25C-19HZ AWB Ref Wellpath: BENSON FARMS 25C-19HZ AWP				
Start MD [ft]	End MD [ft]	Positional Uncertainty Model	Log Name/Comment	Wellbore
16.00	1148.00	Generic gyro - continuous (Standard)	MS GYRO SURVEYS <116-1148>	BENSON FARMS 25C-19HZ AWB
1148.00	7648.00	NaviTrak (IFR)	BHI NAVITRAK MWD+IFR 8 3/4" <1311-7648>	BENSON FARMS 25C-19HZ AWB
7648.00	14482.00	NaviTrak (IFR)	BHI NAVITRAK MWD+IFR 6 1/8" <7767-14482>	BENSON FARMS 25C-19HZ AWB
14482.00	14544.00	Blind Drilling (std)	Projection to bit	BENSON FARMS 25C-19HZ AWB

REFERENCE WELLPATH IDENTIFICATION			
Operator	KERR-MCGEE OIL & GAS ONSHORE LP	Slot	SLOT#23 BENSON FARMS 25C-19HZ (2165'FSL & 51'FWL, SEC.24)
Area	COLORADO	Well	BENSON FARMS 25C-19HZ
Field	WELD COUNTY (KERR MCGEE)	Wellbore	BENSON FARMS 25C-19HZ AWB
Facility	SEC.24-T3N-R68W		

WELLPATH COMMENTS				
MD [ft]	Inclination [°]	Azimuth [°]	TVD [ft]	Comment
16.00	0.000	240.010	16.00	TIE ON
116.00	0.250	240.010	116.00	BEGIN GYRO SURVEYS
1148.00	0.600	309.580	1147.99	TIE ONTO GYRO SURVEYS
1311.00	0.280	322.450	1310.98	BEGIN BHI MWD+IFR SURVEYS
7694.00	89.165	89.816	7333.14	7" CASING POINT
14482.00	90.240	87.440	7287.49	LAST BHI MWD+IFR SURVEY
14544.00	90.240	87.440	7287.23	PROJECTION TO BIT