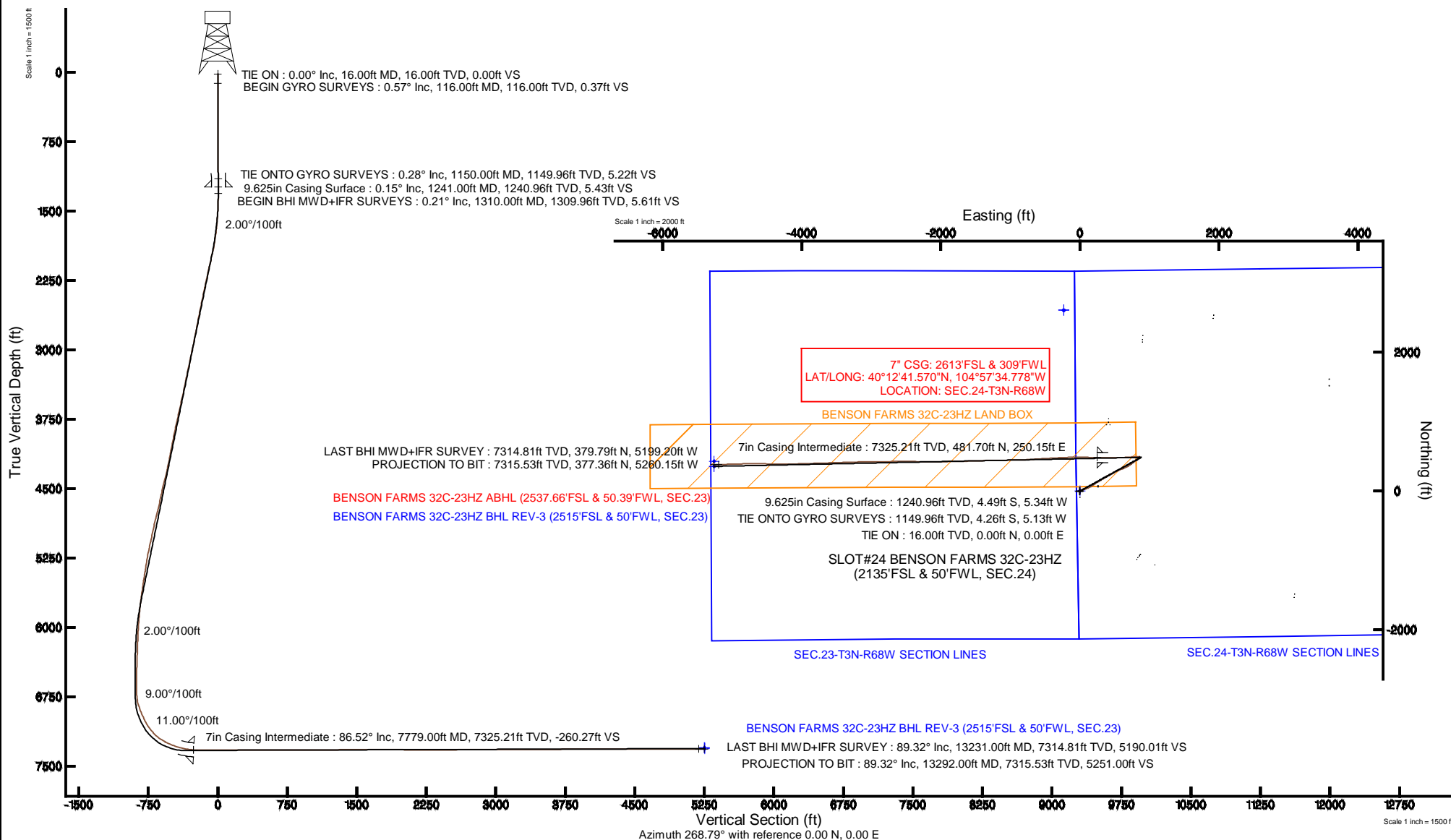


KERR-MCGEE OIL & GAS ONSHORE LP

Location: COLORADO Slot: SLOT#24 BENSON FARMS 32C-23HZ (2135'FSL & 50'FWL, SEC.24)
 Field: WELD COUNTY (KERR MCGEE) Well: BENSON FARMS 32C-23HZ
 Facility: SEC.24-T3N-R68W Wellbore: BENSON FARMS 32C-23HZ PWB

Plot reference wellpath is BENSON FARMS 32C-23HZ (REV-B.0) PWP

True vertical depths are referenced to XTREME 24 (16' RKB) (RKB)	Grid System: NAD83 / Lambert Colorado SP, Northern Zone (501), US feet
Measured depths are referenced to XTREME 24 (16' RKB) (RKB)	North Reference: True north
XTREME 24 (16' RKB) (RKB) to Mean Sea Level: 4973 feet	Scale: True distance
Mean Sea Level to Mud line (At Slot: SLOT#24 BENSON FARMS 32C-23HZ (2135'FSL & 50'FWL, SEC.24)): 0 feet	Depths are in feet
Coordinates are in feet referenced to Slot	Created by: robale01 on 22/Jul/2014



REFERENCE WELLPATH IDENTIFICATION			
Operator	KERR-MCGEE OIL & GAS ONSHORE LP	Slot	SLOT#24 BENSON FARMS 32C-23HZ (2135'FSL & 50'FWL, SEC.24)
Area	COLORADO	Well	BENSON FARMS 32C-23HZ
Field	WELD COUNTY (KERR MCGEE)	Wellbore	BENSON FARMS 32C-23HZ AWB
Facility	SEC.24-T3N-R68W		

REPORT SETUP INFORMATION			
Projection System	NAD83 / Lambert Colorado SP, Northern Zone (501), US feet	Software System	WellArchitect® 4.0.0
North Reference	True	User	Robiale01
Scale	0.999957	Report Generated	22/Jul/2014 at 16:35
Convergence at slot	n/a	Database/Source file	WellArchitectDB/BENSON_FARMS_32C-23HZ_AWB.xml

WELLPATH LOCATION						
	Local coordinates		Grid coordinates		Geographic coordinates	
	North[ft]	East[ft]	Easting[US ft]	Northing[US ft]	Latitude	Longitude
Slot Location	-1608.13	-3576.78	3150660.34	1319885.52	40°12'36.810"N	104°57'38.002"W
Facility Reference Pt			3154226.88	1321515.82	40°12'52.704"N	104°56'51.900"W
Field Reference Pt			3197771.84	1268891.29	40°04'09.600"N	104°47'36.000"W

WELLPATH DATUM			
Calculation method	Minimum curvature	XTREME 24 (16' RKB) (RKB) to Facility Vertical Datum	4973.00ft
Horizontal Reference Pt	Slot	XTREME 24 (16' RKB) (RKB) to Mean Sea Level	4973.00ft
Vertical Reference Pt	XTREME 24 (16' RKB) (RKB)	XTREME 24 (16' RKB) (RKB) to Mud Line at Slot (SLOT#24 BENSON FARMS 32C-23HZ (2135'FSL & 50'FWL, SEC.24))	4973.00ft
MD Reference Pt	XTREME 24 (16' RKB) (RKB)	Section Origin	N 0.00, E 0.00 ft
Field Vertical Reference	Mean Sea Level	Section Azimuth	274.10°

Actual Wellpath Report

BENSON FARMS 32C-23HZ AWP

Page 2 of 6

REFERENCE WELLPATH IDENTIFICATION

Operator	KERR-MCGEE OIL & GAS ONSHORE LP	Slot	SLOT#24 BENSON FARMS 32C-23HZ (2135'FSL & 50'FWL, SEC.24)
Area	COLORADO	Well	BENSON FARMS 32C-23HZ
Field	WELD COUNTY (KERR MCGEE)	Wellbore	BENSON FARMS 32C-23HZ AWB
Facility	SEC.24-T3N-R68W		

WELLPATH DATA (136 stations) † = interpolated/extrapolated station

MD [ft]	Inclination [°]	Azimuth [°]	TVD [ft]	Vert Sect [ft]	North [ft]	East [ft]	Latitude	Longitude	DLS [°/100ft]	Comments
0.00†	0.000	227.160	0.00	0.00	0.00	0.00	40°12'36.810"N	104°57'38.002"W	0.00	
16.00	0.000	227.160	16.00	0.00	0.00	0.00	40°12'36.810"N	104°57'38.002"W	0.00	TIE ON
116.00	0.570	227.160	116.00	0.34	-0.34	-0.36	40°12'36.807"N	104°57'38.007"W	0.57	BEGIN GYRO SURVEYS
216.00	0.640	211.260	215.99	0.93	-1.15	-1.02	40°12'36.799"N	104°57'38.015"W	0.18	
316.00	0.620	185.340	315.99	1.20	-2.17	-1.36	40°12'36.789"N	104°57'38.020"W	0.28	
416.00	0.480	166.420	415.98	1.09	-3.12	-1.31	40°12'36.779"N	104°57'38.019"W	0.23	
516.00	0.260	159.620	515.98	0.86	-3.74	-1.13	40°12'36.773"N	104°57'38.017"W	0.22	
616.00	0.100	253.230	615.98	0.85	-3.97	-1.14	40°12'36.771"N	104°57'38.017"W	0.28	
716.00	0.340	301.460	715.98	1.20	-3.84	-1.48	40°12'36.772"N	104°57'38.021"W	0.28	
816.00	0.620	285.860	815.98	1.99	-3.54	-2.25	40°12'36.775"N	104°57'38.031"W	0.31	
916.00	0.650	278.970	915.97	3.08	-3.30	-3.33	40°12'36.777"N	104°57'38.045"W	0.08	
1016.00	0.620	238.820	1015.96	4.09	-3.50	-4.35	40°12'36.775"N	104°57'38.058"W	0.44	
1116.00	0.420	214.240	1115.96	4.72	-4.08	-5.02	40°12'36.770"N	104°57'38.067"W	0.30	
1150.00	0.280	205.150	1149.96	4.81	-4.26	-5.13	40°12'36.768"N	104°57'38.068"W	0.44	TIE ONTO GYRO SURVEYS
1310.00	0.210	308.860	1309.96	5.19	-4.43	-5.52	40°12'36.766"N	104°57'38.073"W	0.24	BEGIN BHI MWD+IFR SURVEYS
1405.00	1.810	79.570	1404.94	3.88	-4.05	-4.18	40°12'36.770"N	104°57'38.056"W	2.06	
1500.00	2.870	65.990	1499.86	0.33	-2.81	-0.53	40°12'36.782"N	104°57'38.009"W	1.25	
1594.00	5.110	62.270	1593.63	-5.30	0.10	5.32	40°12'36.811"N	104°57'37.933"W	2.40	
1688.00	6.760	65.210	1687.12	-13.70	4.37	14.05	40°12'36.853"N	104°57'37.821"W	1.78	
1782.00	8.810	66.280	1780.25	-24.91	9.58	25.67	40°12'36.905"N	104°57'37.671"W	2.19	
1876.00	10.650	70.180	1872.90	-39.22	15.42	40.43	40°12'36.962"N	104°57'37.481"W	2.08	
1970.00	13.970	70.590	1964.72	-57.57	22.14	59.31	40°12'37.029"N	104°57'37.238"W	3.53	
2067.00	13.850	69.160	2058.88	-78.83	30.16	81.20	40°12'37.108"N	104°57'36.955"W	0.38	
2158.00	12.690	69.680	2147.45	-97.81	37.51	100.75	40°12'37.181"N	104°57'36.703"W	1.28	
2250.00	13.050	67.500	2237.14	-116.30	44.99	119.83	40°12'37.255"N	104°57'36.458"W	0.66	
2342.00	13.570	59.420	2326.67	-134.46	54.46	138.72	40°12'37.348"N	104°57'36.214"W	2.10	
2434.00	13.990	57.180	2416.02	-152.23	65.98	157.35	40°12'37.462"N	104°57'35.974"W	0.74	
2526.00	13.680	56.510	2505.36	-169.74	78.01	175.77	40°12'37.581"N	104°57'35.736"W	0.38	
2616.00	13.240	56.180	2592.88	-186.30	89.62	193.21	40°12'37.696"N	104°57'35.512"W	0.50	
2707.00	12.600	56.330	2681.58	-202.37	100.92	210.13	40°12'37.807"N	104°57'35.294"W	0.70	
2799.00	12.980	53.920	2771.30	-218.19	112.57	226.83	40°12'37.922"N	104°57'35.078"W	0.71	
2891.00	13.290	57.210	2860.89	-234.54	124.38	244.07	40°12'38.039"N	104°57'34.856"W	0.88	
2983.00	13.280	62.360	2950.43	-251.99	135.01	262.32	40°12'38.144"N	104°57'34.621"W	1.29	
3075.00	13.470	60.750	3039.94	-269.92	145.15	281.03	40°12'38.244"N	104°57'34.380"W	0.45	
3167.00	13.480	57.490	3129.41	-287.48	156.15	299.42	40°12'38.353"N	104°57'34.143"W	0.83	
3258.00	13.570	59.160	3217.88	-304.75	167.32	317.53	40°12'38.463"N	104°57'33.909"W	0.44	
3350.00	13.600	57.540	3307.31	-322.28	178.66	335.93	40°12'38.575"N	104°57'33.672"W	0.41	
3442.00	13.730	57.400	3396.70	-339.72	190.34	354.25	40°12'38.691"N	104°57'33.436"W	0.15	
3534.00	13.880	60.580	3486.05	-357.68	201.65	373.06	40°12'38.803"N	104°57'33.193"W	0.84	
3626.00	13.790	60.610	3575.38	-376.02	212.45	392.23	40°12'38.909"N	104°57'32.946"W	0.10	
3718.00	14.410	62.250	3664.61	-394.89	223.16	411.91	40°12'39.015"N	104°57'32.693"W	0.80	
3810.00	13.940	62.620	3753.81	-414.06	233.59	431.88	40°12'39.118"N	104°57'32.435"W	0.52	
3902.00	13.460	61.360	3843.19	-432.52	243.82	451.12	40°12'39.219"N	104°57'32.187"W	0.61	
3995.00	13.080	60.950	3933.71	-450.43	254.11	469.82	40°12'39.321"N	104°57'31.946"W	0.42	
4087.00	11.880	59.720	4023.53	-466.96	263.94	487.10	40°12'39.418"N	104°57'31.724"W	1.34	

Actual Wellpath Report

BENSON FARMS 32C-23HZ AWP

Page 3 of 6

REFERENCE WELLPATH IDENTIFICATION			
Operator	KERR-MCGEE OIL & GAS ONSHORE LP	Slot	SLOT#24 BENSON FARMS 32C-23HZ (2135'FSL & 50'FWL, SEC.24)
Area	COLORADO	Well	BENSON FARMS 32C-23HZ
Field	WELD COUNTY (KERR MCGEE)	Wellbore	BENSON FARMS 32C-23HZ AWB
Facility	SEC.24-T3N-R68W		

WELLPATH DATA (136 stations) † = interpolated/extrapolated station										
MD [ft]	Inclination [°]	Azimuth [°]	TVD [ft]	Vert Sect [ft]	North [ft]	East [ft]	Latitude	Longitude	DLS [°/100ft]	Comments
4181.00	11.750	61.290	4115.54	-482.99	273.42	503.85	40°12'39.512"N	104°57'31.508"W	0.37	
4274.00	12.830	61.360	4206.41	-499.64	282.92	521.22	40°12'39.606"N	104°57'31.284"W	1.16	
4367.00	13.580	66.980	4296.95	-518.04	292.14	540.33	40°12'39.697"N	104°57'31.037"W	1.60	
4460.00	14.860	68.650	4387.10	-538.53	300.75	561.49	40°12'39.782"N	104°57'30.765"W	1.45	
4553.00	14.040	68.710	4477.16	-559.49	309.19	583.10	40°12'39.865"N	104°57'30.486"W	0.88	
4646.00	12.680	67.140	4567.64	-578.78	317.25	603.02	40°12'39.945"N	104°57'30.229"W	1.51	
4737.00	13.510	70.560	4656.27	-597.42	324.67	622.25	40°12'40.018"N	104°57'29.982"W	1.25	
4822.00	15.190	64.270	4738.62	-616.19	332.81	641.65	40°12'40.099"N	104°57'29.732"W	2.69	
4908.00	15.140	61.740	4821.63	-635.45	343.01	661.69	40°12'40.200"N	104°57'29.473"W	0.77	
4993.00	13.930	61.990	4903.91	-653.49	353.08	680.50	40°12'40.299"N	104°57'29.231"W	1.43	
5078.00	13.750	58.700	4986.44	-670.39	363.13	698.16	40°12'40.398"N	104°57'29.003"W	0.95	
5163.00	14.480	56.650	5068.87	-687.06	374.22	715.67	40°12'40.508"N	104°57'28.777"W	1.04	
5248.00	13.840	56.300	5151.29	-703.53	385.70	733.01	40°12'40.621"N	104°57'28.554"W	0.76	
5333.00	12.320	54.900	5234.08	-718.59	396.56	748.89	40°12'40.729"N	104°57'28.349"W	1.83	
5418.00	11.860	49.980	5317.20	-731.89	407.39	762.99	40°12'40.836"N	104°57'28.167"W	1.33	
5503.00	11.580	48.690	5400.43	-744.15	418.64	776.09	40°12'40.947"N	104°57'27.999"W	0.45	
5588.00	10.420	55.100	5483.87	-756.11	428.67	788.81	40°12'41.046"N	104°57'27.835"W	1.98	
5673.00	9.410	58.720	5567.60	-767.75	436.67	801.05	40°12'41.125"N	104°57'27.677"W	1.40	
5758.00	8.690	65.490	5651.54	-779.05	442.95	812.83	40°12'41.187"N	104°57'27.525"W	1.51	
5843.00	7.550	62.000	5735.69	-789.42	448.23	823.60	40°12'41.239"N	104°57'27.386"W	1.46	
5928.00	7.100	53.380	5820.00	-798.13	453.99	832.75	40°12'41.296"N	104°57'27.268"W	1.40	
6013.00	7.020	43.540	5904.36	-805.41	460.89	840.55	40°12'41.364"N	104°57'27.168"W	1.42	
6099.00	6.920	28.730	5989.73	-810.91	469.24	846.66	40°12'41.447"N	104°57'27.089"W	2.09	
6184.00	6.190	22.290	6074.17	-814.47	477.97	850.86	40°12'41.533"N	104°57'27.035"W	1.22	
6269.00	4.310	24.340	6158.81	-817.01	485.12	853.91	40°12'41.604"N	104°57'26.996"W	2.22	
6354.00	3.420	34.720	6243.62	-819.40	490.12	856.67	40°12'41.653"N	104°57'26.960"W	1.33	
6440.00	2.580	60.640	6329.50	-822.33	493.17	859.82	40°12'41.683"N	104°57'26.919"W	1.83	
6525.00	1.600	90.580	6414.45	-825.11	494.10	862.67	40°12'41.693"N	104°57'26.883"W	1.69	
6610.00	0.860	94.860	6499.43	-826.93	494.03	864.50	40°12'41.692"N	104°57'26.859"W	0.88	
6695.00	0.520	102.250	6584.42	-827.95	493.90	865.51	40°12'41.691"N	104°57'26.846"W	0.41	
6745.00	0.390	102.470	6634.42	-828.34	493.81	865.90	40°12'41.690"N	104°57'26.841"W	0.26	
6780.00	0.380	60.310	6669.42	-828.56	493.84	866.11	40°12'41.690"N	104°57'26.838"W	0.79	
6865.00	5.960	273.870	6754.27	-824.37	494.28	861.95	40°12'41.694"N	104°57'26.892"W	7.39	
6951.00	16.570	274.080	6838.50	-807.60	495.46	845.22	40°12'41.706"N	104°57'27.108"W	12.34	
7036.00	22.120	268.880	6918.67	-779.52	496.01	817.10	40°12'41.711"N	104°57'27.470"W	6.83	
7121.00	27.330	265.230	6995.86	-744.27	494.07	781.63	40°12'41.692"N	104°57'27.927"W	6.38	
7206.00	32.260	265.030	7069.60	-702.57	490.48	739.56	40°12'41.657"N	104°57'28.469"W	5.80	
7291.00	41.990	265.450	7137.29	-651.94	486.25	688.50	40°12'41.615"N	104°57'29.128"W	11.45	
7376.00	53.160	268.980	7194.55	-589.74	483.38	625.94	40°12'41.587"N	104°57'29.934"W	13.49	
7461.00	62.220	269.350	7239.94	-518.24	482.35	554.18	40°12'41.576"N	104°57'30.859"W	10.67	
7546.00	69.070	270.000	7274.97	-441.08	481.92	476.79	40°12'41.572"N	104°57'31.856"W	8.09	
7631.00	75.240	269.570	7301.01	-360.44	481.61	395.92	40°12'41.569"N	104°57'32.899"W	7.27	
7727.00	81.940	270.110	7319.99	-266.65	481.35	301.87	40°12'41.567"N	104°57'34.111"W	7.00	
7779.00†	86.517	270.648	7325.21	-215.04	481.70	250.15	40°12'41.570"N	104°57'34.778"W	8.86	7" CASING POINT
7828.00	90.830	271.150	7326.35	-166.14	482.46	201.18	40°12'41.578"N	104°57'35.409"W	8.86	

Actual Wellpath Report

BENSON FARMS 32C-23HZ AWP

Page 4 of 6

REFERENCE WELLPATH IDENTIFICATION

Operator	KERR-MCGEE OIL & GAS ONSHORE LP	Slot	SLOT#24 BENSON FARMS 32C-23HZ (2135'FSL & 50'FWL, SEC.24)
Area	COLORADO	Well	BENSON FARMS 32C-23HZ
Field	WELD COUNTY (KERR MCGEE)	Wellbore	BENSON FARMS 32C-23HZ AWB
Facility	SEC.24-T3N-R68W		

WELLPATH DATA (136 stations)

MD [ft]	Inclination [°]	Azimuth [°]	TVD [ft]	Vert Sect [ft]	North [ft]	East [ft]	Latitude	Longitude	DLS [°/100ft]	Comments
7878.00	90.590	270.900	7325.73	-116.22	483.36	151.19	40°12'41.587"N	104°57'36.053"W	0.69	
7969.00	90.060	271.560	7325.21	-25.33	485.31	60.22	40°12'41.606"N	104°57'37.226"W	0.93	
8062.00	89.480	270.380	7325.59	67.52	486.89	-32.77	40°12'41.621"N	104°57'38.424"W	1.41	
8153.00	89.230	268.320	7326.61	158.20	485.85	-123.75	40°12'41.611"N	104°57'39.597"W	2.28	
8245.00	90.150	267.220	7327.11	249.63	482.28	-215.68	40°12'41.576"N	104°57'40.782"W	1.56	
8337.00	90.800	266.970	7326.35	340.94	477.61	-307.56	40°12'41.530"N	104°57'41.966"W	0.76	
8423.00	90.180	266.790	7325.61	426.26	472.93	-393.42	40°12'41.483"N	104°57'43.073"W	0.75	
8593.00	90.440	266.620	7324.69	594.84	463.16	-563.14	40°12'41.387"N	104°57'45.261"W	0.18	
8763.00	88.420	266.570	7326.38	763.36	453.07	-732.82	40°12'41.287"N	104°57'47.448"W	1.19	
8848.00	89.110	267.720	7328.21	847.72	448.83	-817.70	40°12'41.245"N	104°57'48.542"W	1.58	
8933.00	90.310	268.880	7328.64	932.28	446.31	-902.65	40°12'41.220"N	104°57'49.637"W	1.96	
9018.00	91.540	269.110	7327.27	1016.93	444.82	-987.63	40°12'41.206"N	104°57'50.732"W	1.47	
9103.00	90.920	268.970	7325.45	1101.58	443.40	-1072.60	40°12'41.191"N	104°57'51.827"W	0.75	
9188.00	90.370	269.110	7324.49	1186.24	441.97	-1157.58	40°12'41.177"N	104°57'52.923"W	0.67	
9273.00	89.850	269.140	7324.33	1270.92	440.67	-1242.57	40°12'41.164"N	104°57'54.018"W	0.61	
9358.00	90.740	268.650	7323.89	1355.56	439.04	-1327.55	40°12'41.148"N	104°57'55.113"W	1.20	
9443.00	90.250	268.120	7323.15	1440.14	436.64	-1412.51	40°12'41.124"N	104°57'56.209"W	0.85	
9528.00	89.820	268.030	7323.10	1524.67	433.79	-1497.47	40°12'41.096"N	104°57'57.304"W	0.52	
9613.00	90.580	268.520	7322.81	1609.23	431.23	-1582.43	40°12'41.071"N	104°57'58.399"W	1.06	
9698.00	90.090	268.420	7322.31	1693.81	428.96	-1667.39	40°12'41.048"N	104°57'59.494"W	0.59	
9868.00	89.720	268.910	7322.59	1863.05	425.00	-1837.35	40°12'41.009"N	104°58'01.684"W	0.36	
10039.00	89.380	269.300	7323.93	2033.39	422.33	-2008.32	40°12'40.983"N	104°58'03.888"W	0.30	
10209.00	89.530	270.280	7325.55	2202.90	421.70	-2178.31	40°12'40.976"N	104°58'06.079"W	0.58	
10380.00	89.220	271.110	7327.42	2373.59	423.78	-2349.28	40°12'40.997"N	104°58'08.283"W	0.52	
10464.00	90.430	270.990	7327.67	2457.46	425.32	-2433.27	40°12'41.012"N	104°58'09.366"W	1.45	
10635.00	92.240	269.180	7323.69	2627.98	425.57	-2604.21	40°12'41.014"N	104°58'11.569"W	1.50	
10805.00	90.300	269.060	7319.92	2797.29	422.96	-2774.14	40°12'40.988"N	104°58'13.759"W	1.14	
10975.00	89.350	269.700	7320.44	2966.71	421.12	-2944.12	40°12'40.970"N	104°58'15.950"W	0.67	
11145.00	89.590	268.840	7322.01	3136.10	418.95	-3114.10	40°12'40.948"N	104°58'18.141"W	0.53	
11315.00	89.470	268.080	7323.41	3305.27	414.39	-3284.03	40°12'40.903"N	104°58'20.331"W	0.45	
11485.00	90.270	268.510	7323.79	3474.39	409.33	-3453.95	40°12'40.853"N	104°58'22.522"W	0.53	
11655.00	91.560	267.520	7321.08	3643.40	403.44	-3623.83	40°12'40.794"N	104°58'24.711"W	0.96	
11826.00	91.240	268.780	7316.90	3813.43	397.92	-3794.68	40°12'40.739"N	104°58'26.913"W	0.76	
11996.00	89.140	268.160	7316.34	3982.60	393.38	-3964.61	40°12'40.694"N	104°58'29.104"W	1.29	
12166.00	89.260	268.630	7318.71	4151.74	388.62	-4134.53	40°12'40.647"N	104°58'31.294"W	0.29	
12251.00	90.800	269.740	7318.67	4236.42	387.41	-4219.51	40°12'40.635"N	104°58'32.389"W	2.23	
12337.00	90.680	270.160	7317.55	4322.19	387.34	-4305.51	40°12'40.634"N	104°58'33.498"W	0.51	
12507.00	89.940	271.420	7316.64	4491.89	389.68	-4475.48	40°12'40.657"N	104°58'35.689"W	0.86	
12678.00	90.340	271.060	7316.22	4662.68	393.38	-4646.44	40°12'40.693"N	104°58'37.892"W	0.31	
12763.00	89.630	269.580	7316.24	4747.49	393.86	-4731.44	40°12'40.698"N	104°58'38.988"W	1.93	
12848.00	90.060	267.750	7316.47	4832.10	391.88	-4816.41	40°12'40.678"N	104°58'40.083"W	2.21	
12933.00	90.550	269.040	7316.02	4916.68	389.50	-4901.37	40°12'40.654"N	104°58'41.178"W	1.62	
13018.00	90.590	267.820	7315.17	5001.26	387.17	-4986.34	40°12'40.631"N	104°58'42.273"W	1.44	
13103.00	90.370	268.270	7314.46	5085.78	384.27	-5071.28	40°12'40.602"N	104°58'43.368"W	0.59	
13231.00	89.320	267.720	7314.81	5213.05	379.79	-5199.20	40°12'40.558"N	104°58'45.017"W	0.93	LAST BHI MWD+IFR SURVEY

REFERENCE WELLPATH IDENTIFICATION			
Operator	KERR-MCGEE OIL & GAS ONSHORE LP	Slot	SLOT#24 BENSON FARMS 32C-23HZ (2135'FSL & 50'FWL, SEC.24)
Area	COLORADO	Well	BENSON FARMS 32C-23HZ
Field	WELD COUNTY (KERR MCGEE)	Wellbore	BENSON FARMS 32C-23HZ AWB
Facility	SEC.24-T3N-R68W		

WELLPATH DATA (136 stations)										
MD [ft]	Inclination [°]	Azimuth [°]	TVD [ft]	Vert Sect [ft]	North [ft]	East [ft]	Latitude	Longitude	DLS [°/100ft]	Comments
13292.00	89.320	267.720	7315.53	5273.67	377.36	-5260.15	40°12'40.534"N	104°58'45.802"W	0.00	PROJECTION TO BIT

HOLE & CASING SECTIONS - Ref Wellbore: BENSON FARMS 32C-23HZ AWB Ref Wellpath: BENSON FARMS 32C-23HZ AWP										
String/Diameter	Start MD [ft]	End MD [ft]	Interval [ft]	Start TVD [ft]	End TVD [ft]	Start N/S [ft]	Start E/W [ft]	End N/S [ft]	End E/W [ft]	
13.5in Open Hole	16.00	1251.00	1235.00	16.00	1250.96	0.00	0.00	-4.49	-5.36	
9.625in Casing Surface	16.00	1241.00	1225.00	16.00	1240.96	0.00	0.00	-4.49	-5.34	
8.75in Open Hole	1251.00	7790.00	6539.00	1250.96	7325.79	-4.49	-5.36	481.83	239.17	
7in Casing Intermediate	16.00	7779.00	7763.00	16.00	7325.21	0.00	0.00	481.70	250.15	
6.125in Open Hole	7790.00	13292.00	5502.00	7325.79	7315.53	481.83	239.17	377.36	-5260.15	

WELLPATH COMPOSITION - Ref Wellbore: BENSON FARMS 32C-23HZ AWB Ref Wellpath: BENSON FARMS 32C-23HZ AWP				
Start MD [ft]	End MD [ft]	Positional Uncertainty Model	Log Name/Comment	Wellbore
16.00	1150.00	Generic gyro - continuous (Standard)	MS GYRO SURVEYS <116-1150>	BENSON FARMS 32C-23HZ AWB
1150.00	7727.00	NaviTrak (IFR)	BHI NAVITRAK MWD+IFR 8 3/4" <1310-7727>	BENSON FARMS 32C-23HZ AWB
7727.00	13231.00	NaviTrak (IFR)	BHI NAVITRAK MWD+IFR 6 1/8" <7828-13231>	BENSON FARMS 32C-23HZ AWB
13231.00	13292.00	Blind Drilling (std)	Projection to bit	BENSON FARMS 32C-23HZ AWB

Actual Wellpath Report

BENSON FARMS 32C-23HZ AWP

Page 6 of 6

REFERENCE WELLPATH IDENTIFICATION				
Operator	KERR-MCGEE OIL & GAS ONSHORE LP	Slot	SLOT#24 BENSON FARMS 32C-23HZ (2135'FSL & 50'FWL, SEC.24)	
Area	COLORADO	Well	BENSON FARMS 32C-23HZ	
Field	WELD COUNTY (KERR MCGEE)	Wellbore	BENSON FARMS 32C-23HZ AWB	
Facility	SEC.24-T3N-R68W			

WELLPATH COMMENTS				
MD [ft]	Inclination [°]	Azimuth [°]	TVD [ft]	Comment
16.00	0.000	227.160	16.00	TIE ON
116.00	0.570	227.160	116.00	BEGIN GYRO SURVEYS
1150.00	0.280	205.150	1149.96	TIE ONTO GYRO SURVEYS
1310.00	0.210	308.860	1309.96	BEGIN BHI MWD+IFR SURVEYS
7779.00	86.517	270.648	7325.21	7" CASING POINT
13231.00	89.320	267.720	7314.81	LAST BHI MWD+IFR SURVEY
13292.00	89.320	267.720	7315.53	PROJECTION TO BIT