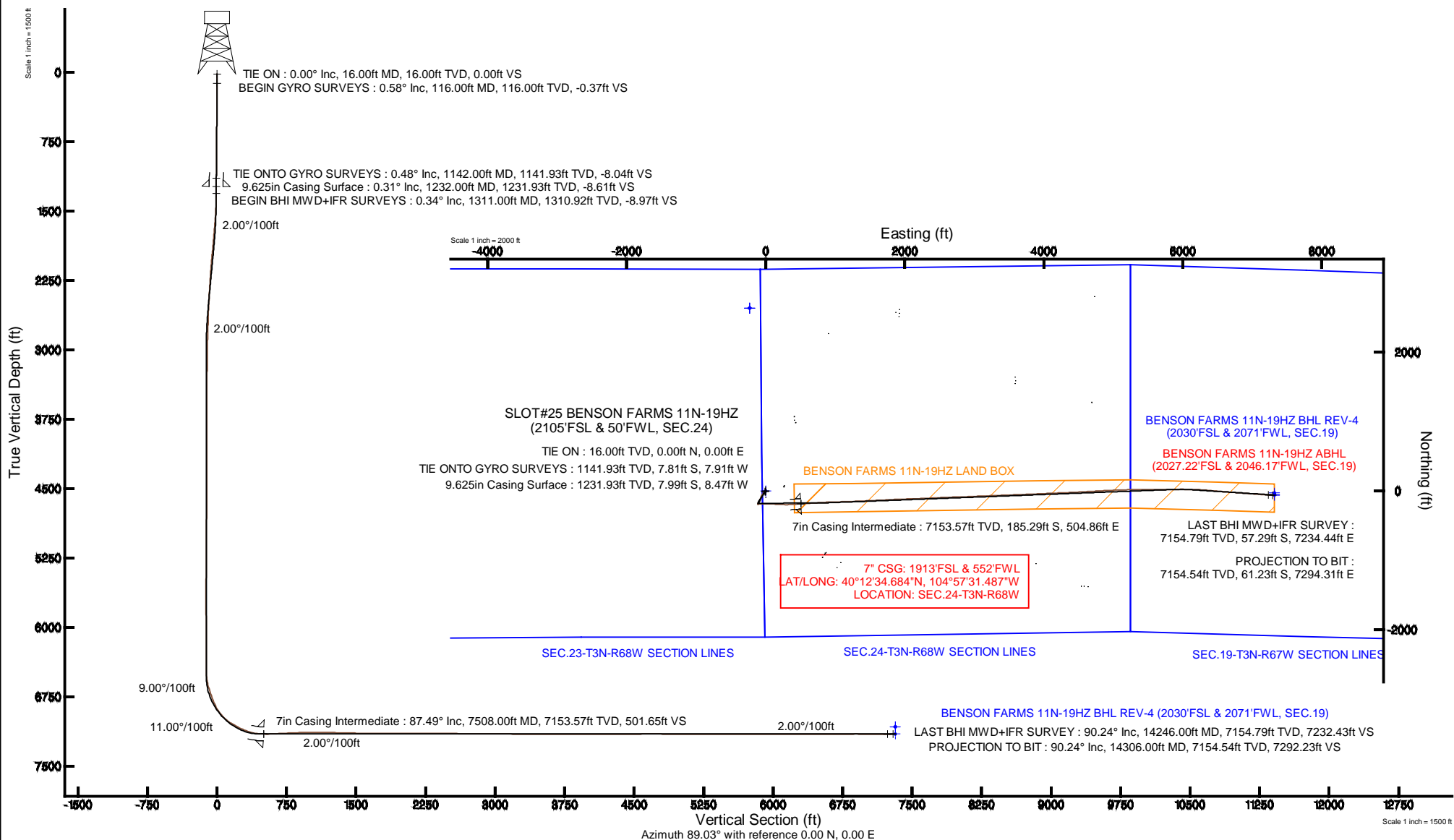


# KERR-MCGEE OIL & GAS ONSHORE LP

Location: COLORADO Slot: SLOT#25 BENSON FARMS 11N-19HZ (2105'FSL & 50'FWL, SEC.24)  
 Field: WELD COUNTY (KERR MCGEE) Well: BENSON FARMS 11N-19HZ  
 Facility: SEC.24-T3N-R68W Wellbore: BENSON FARMS 11N-19HZ PWB

Plot reference wellpath is BENSON FARMS 11N-19HZ (REV-C.0) PWP

|                                                                                                         |                                                                        |
|---------------------------------------------------------------------------------------------------------|------------------------------------------------------------------------|
| True vertical depths are referenced to XTREME 24 (16' RKB) (RKB)                                        | Grid System: NAD83 / Lambert Colorado SP, Northern Zone (501), US feet |
| Measured depths are referenced to XTREME 24 (16' RKB) (RKB)                                             | North Reference: True north                                            |
| XTREME 24 (16' RKB) to Mean Sea Level: 4973 feet                                                        | Scale: True distance                                                   |
| Mean Sea Level to Mud line (At Slot: SLOT#25 BENSON FARMS 11N-19HZ (2105'FSL & 50'FWL, SEC.24)): 0 feet | Depths are in feet                                                     |
| Coordinates are in feet referenced to Slot                                                              | Created by: robale01 on 18/Jul/2014                                    |



| REFERENCE WELLPATH IDENTIFICATION |                                 |          |                                                           |
|-----------------------------------|---------------------------------|----------|-----------------------------------------------------------|
| Operator                          | KERR-MCGEE OIL & GAS ONSHORE LP | Slot     | SLOT#25 BENSON FARMS 11N-19HZ (2105'FSL & 50'FWL, SEC.24) |
| Area                              | COLORADO                        | Well     | BENSON FARMS 11N-19HZ                                     |
| Field                             | WELD COUNTY (KERR MCGEE)        | Wellbore | BENSON FARMS 11N-19HZ AWB                                 |
| Facility                          | SEC.24-T3N-R68W                 |          |                                                           |

| REPORT SETUP INFORMATION |                                                           |                      |                                               |
|--------------------------|-----------------------------------------------------------|----------------------|-----------------------------------------------|
| Projection System        | NAD83 / Lambert Colorado SP, Northern Zone (501), US feet | Software System      | WellArchitect® 4.0.0                          |
| North Reference          | True                                                      | User                 | Robiale01                                     |
| Scale                    | 0.999957                                                  | Report Generated     | 18/Jul/2014 at 12:05                          |
| Convergence at slot      | n/a                                                       | Database/Source file | WellArchitectDB/BENSON_FARMS_11N-19HZ_AWB.xml |

| WELLPATH LOCATION     |                   |          |                  |                 |                        |                 |
|-----------------------|-------------------|----------|------------------|-----------------|------------------------|-----------------|
|                       | Local coordinates |          | Grid coordinates |                 | Geographic coordinates |                 |
|                       | North[ft]         | East[ft] | Easting[US ft]   | Northing[US ft] | Latitude               | Longitude       |
| Slot Location         | -1637.98          | -3576.16 | 3150661.15       | 1319855.68      | 40°12'36.515"N         | 104°57'37.994"W |
| Facility Reference Pt |                   |          | 3154226.88       | 1321515.82      | 40°12'52.704"N         | 104°56'51.900"W |
| Field Reference Pt    |                   |          | 3197771.84       | 1268891.29      | 40°04'09.600"N         | 104°47'36.000"W |

| WELLPATH DATUM           |                           |                                                                                                           |                   |
|--------------------------|---------------------------|-----------------------------------------------------------------------------------------------------------|-------------------|
| Calculation method       | Minimum curvature         | XTREME 24 (16' RKB) (RKB) to Facility Vertical Datum                                                      | 4973.00ft         |
| Horizontal Reference Pt  | Slot                      | XTREME 24 (16' RKB) (RKB) to Mean Sea Level                                                               | 4973.00ft         |
| Vertical Reference Pt    | XTREME 24 (16' RKB) (RKB) | XTREME 24 (16' RKB) (RKB) to Mud Line at Slot (SLOT#25 BENSON FARMS 11N-19HZ (2105'FSL & 50'FWL, SEC.24)) | 4973.00ft         |
| MD Reference Pt          | XTREME 24 (16' RKB) (RKB) | Section Origin                                                                                            | N 0.00, E 0.00 ft |
| Field Vertical Reference | Mean Sea Level            | Section Azimuth                                                                                           | 90.48°            |

### REFERENCE WELLPATH IDENTIFICATION

|          |                                 |          |                                                           |
|----------|---------------------------------|----------|-----------------------------------------------------------|
| Operator | KERR-MCGEE OIL & GAS ONSHORE LP | Slot     | SLOT#25 BENSON FARMS 11N-19HZ (2105'FSL & 50'FWL, SEC.24) |
| Area     | COLORADO                        | Well     | BENSON FARMS 11N-19HZ                                     |
| Field    | WELD COUNTY (KERR MCGEE)        | Wellbore | BENSON FARMS 11N-19HZ AWP                                 |
| Facility | SEC.24-T3N-R68W                 |          |                                                           |

### WELLPATH DATA (138 stations) † = interpolated/extrapolated station

| MD [ft] | Inclination [°] | Azimuth [°] | TVD [ft] | Vert Sect [ft] | North [ft] | East [ft] | Latitude       | Longitude       | DLS [°/100ft] | Comments                  |
|---------|-----------------|-------------|----------|----------------|------------|-----------|----------------|-----------------|---------------|---------------------------|
| 0.00†   | 0.000           | 226.310     | 0.00     | 0.00           | 0.00       | 0.00      | 40°12'36.515"N | 104°57'37.994"W | 0.00          |                           |
| 16.00   | 0.000           | 226.310     | 16.00    | 0.00           | 0.00       | 0.00      | 40°12'36.515"N | 104°57'37.994"W | 0.00          | TIE ON                    |
| 116.00  | 0.580           | 226.310     | 116.00   | -0.36          | -0.35      | -0.37     | 40°12'36.512"N | 104°57'37.999"W | 0.58          | BEGIN GYRO SURVEYS        |
| 216.00  | 0.720           | 214.300     | 215.99   | -1.08          | -1.22      | -1.09     | 40°12'36.503"N | 104°57'38.008"W | 0.19          |                           |
| 316.00  | 0.900           | 198.600     | 315.98   | -1.67          | -2.48      | -1.69     | 40°12'36.490"N | 104°57'38.016"W | 0.28          |                           |
| 416.00  | 0.800           | 199.270     | 415.97   | -2.14          | -3.89      | -2.17     | 40°12'36.477"N | 104°57'38.022"W | 0.10          |                           |
| 516.00  | 0.680           | 197.250     | 515.96   | -2.53          | -5.11      | -2.58     | 40°12'36.464"N | 104°57'38.027"W | 0.12          |                           |
| 616.00  | 0.530           | 214.400     | 615.96   | -2.96          | -6.06      | -3.02     | 40°12'36.455"N | 104°57'38.033"W | 0.23          |                           |
| 716.00  | 0.450           | 257.070     | 715.95   | -3.60          | -6.53      | -3.66     | 40°12'36.450"N | 104°57'38.041"W | 0.36          |                           |
| 816.00  | 0.590           | 268.020     | 815.95   | -4.50          | -6.63      | -4.56     | 40°12'36.449"N | 104°57'38.053"W | 0.17          |                           |
| 916.00  | 0.810           | 270.570     | 915.94   | -5.72          | -6.64      | -5.78     | 40°12'36.449"N | 104°57'38.068"W | 0.22          |                           |
| 1016.00 | 0.760           | 235.290     | 1015.93  | -6.97          | -7.02      | -7.03     | 40°12'36.446"N | 104°57'38.085"W | 0.48          |                           |
| 1116.00 | 0.390           | 214.070     | 1115.93  | -7.70          | -7.68      | -7.77     | 40°12'36.439"N | 104°57'38.094"W | 0.42          |                           |
| 1142.00 | 0.480           | 238.530     | 1141.93  | -7.84          | -7.81      | -7.91     | 40°12'36.438"N | 104°57'38.096"W | 0.79          | TIE ONTO GYRO SURVEYS     |
| 1311.00 | 0.340           | 319.470     | 1310.92  | -8.77          | -7.79      | -8.84     | 40°12'36.438"N | 104°57'38.108"W | 0.32          | BEGIN BHI MWD+IFR SURVEYS |
| 1405.00 | 2.030           | 244.920     | 1404.90  | -10.46         | -8.29      | -10.53    | 40°12'36.433"N | 104°57'38.130"W | 2.09          |                           |
| 1499.00 | 3.640           | 226.280     | 1498.79  | -14.10         | -11.06     | -14.19    | 40°12'36.406"N | 104°57'38.177"W | 1.95          |                           |
| 1593.00 | 5.730           | 225.940     | 1592.47  | -19.58         | -16.38     | -19.72    | 40°12'36.353"N | 104°57'38.248"W | 2.22          |                           |
| 1782.00 | 8.830           | 216.930     | 1779.93  | -34.93         | -34.54     | -35.22    | 40°12'36.174"N | 104°57'38.448"W | 1.74          |                           |
| 1876.00 | 9.940           | 209.430     | 1872.67  | -43.14         | -47.38     | -43.54    | 40°12'36.047"N | 104°57'38.555"W | 1.75          |                           |
| 1970.00 | 10.300          | 208.530     | 1965.21  | -51.02         | -61.83     | -51.54    | 40°12'35.904"N | 104°57'38.658"W | 0.42          |                           |
| 2066.00 | 10.270          | 206.920     | 2059.67  | -58.87         | -77.00     | -59.52    | 40°12'35.754"N | 104°57'38.761"W | 0.30          |                           |
| 2158.00 | 9.610           | 206.150     | 2150.28  | -65.85         | -91.20     | -66.61    | 40°12'35.614"N | 104°57'38.853"W | 0.73          |                           |
| 2250.00 | 8.810           | 202.900     | 2241.10  | -71.86         | -104.59    | -72.74    | 40°12'35.481"N | 104°57'38.932"W | 1.04          |                           |
| 2342.00 | 8.220           | 201.860     | 2332.08  | -76.94         | -117.18    | -77.93    | 40°12'35.357"N | 104°57'38.998"W | 0.66          |                           |
| 2434.00 | 7.720           | 202.290     | 2423.20  | -81.64         | -129.00    | -82.72    | 40°12'35.240"N | 104°57'39.060"W | 0.55          |                           |
| 2525.00 | 7.360           | 202.750     | 2513.41  | -86.12         | -140.03    | -87.30    | 40°12'35.131"N | 104°57'39.119"W | 0.40          |                           |
| 2615.00 | 6.720           | 196.050     | 2602.73  | -89.72         | -150.41    | -90.98    | 40°12'35.029"N | 104°57'39.167"W | 1.16          |                           |
| 2707.00 | 4.960           | 198.330     | 2694.25  | -92.38         | -159.36    | -93.72    | 40°12'34.940"N | 104°57'39.202"W | 1.93          |                           |
| 2799.00 | 3.170           | 209.550     | 2786.02  | -94.83         | -165.35    | -96.23    | 40°12'34.881"N | 104°57'39.234"W | 2.12          |                           |
| 2891.00 | 2.440           | 241.550     | 2877.91  | -97.78         | -168.49    | -99.20    | 40°12'34.850"N | 104°57'39.273"W | 1.85          |                           |
| 2983.00 | 0.910           | 229.800     | 2969.87  | -100.05        | -169.90    | -101.48   | 40°12'34.836"N | 104°57'39.302"W | 1.70          |                           |
| 3258.00 | 1.130           | 223.670     | 3244.82  | -103.56        | -173.27    | -105.02   | 40°12'34.803"N | 104°57'39.348"W | 0.09          |                           |
| 3534.00 | 0.260           | 135.560     | 3520.81  | -104.99        | -175.69    | -106.46   | 40°12'34.779"N | 104°57'39.366"W | 0.42          |                           |
| 3809.00 | 0.380           | 146.490     | 3795.80  | -104.03        | -176.89    | -105.52   | 40°12'34.767"N | 104°57'39.354"W | 0.05          |                           |
| 4087.00 | 0.410           | 187.900     | 4073.80  | -103.65        | -178.65    | -105.15   | 40°12'34.750"N | 104°57'39.349"W | 0.10          |                           |
| 4367.00 | 0.390           | 197.480     | 4353.79  | -104.06        | -180.55    | -105.57   | 40°12'34.731"N | 104°57'39.355"W | 0.02          |                           |
| 4645.00 | 1.100           | 314.750     | 4631.77  | -106.24        | -179.57    | -107.75   | 40°12'34.740"N | 104°57'39.383"W | 0.48          |                           |
| 4822.00 | 1.570           | 193.760     | 4808.75  | -108.02        | -180.73    | -109.54   | 40°12'34.729"N | 104°57'39.406"W | 1.32          |                           |
| 5078.00 | 1.150           | 196.980     | 5064.67  | -109.55        | -186.59    | -111.12   | 40°12'34.671"N | 104°57'39.426"W | 0.17          |                           |
| 5333.00 | 1.120           | 210.900     | 5319.63  | -111.54        | -191.18    | -113.15   | 40°12'34.626"N | 104°57'39.452"W | 0.11          |                           |
| 5588.00 | 0.480           | 240.950     | 5574.60  | -113.73        | -193.84    | -115.36   | 40°12'34.600"N | 104°57'39.481"W | 0.29          |                           |
| 5843.00 | 0.620           | 80.920      | 5829.60  | -113.30        | -194.14    | -114.93   | 40°12'34.597"N | 104°57'39.475"W | 0.42          |                           |
| 6098.00 | 0.620           | 61.190      | 6084.58  | -110.74        | -193.25    | -112.36   | 40°12'34.605"N | 104°57'39.442"W | 0.08          |                           |
| 6354.00 | 0.580           | 4.540       | 6340.57  | -109.44        | -191.30    | -111.05   | 40°12'34.625"N | 104°57'39.425"W | 0.22          |                           |

# Actual Wellpath Report

BENSON FARMS 11N-19HZ AWP

Page 3 of 6

## REFERENCE WELLPATH IDENTIFICATION

|          |                                 |          |                                                           |
|----------|---------------------------------|----------|-----------------------------------------------------------|
| Operator | KERR-MCGEE OIL & GAS ONSHORE LP | Slot     | SLOT#25 BENSON FARMS 11N-19HZ (2105'FSL & 50'FWL, SEC.24) |
| Area     | COLORADO                        | Well     | BENSON FARMS 11N-19HZ                                     |
| Field    | WELD COUNTY (KERR MCGEE)        | Wellbore | BENSON FARMS 11N-19HZ AWP                                 |
| Facility | SEC.24-T3N-R68W                 |          |                                                           |

## WELLPATH DATA (138 stations) † = interpolated/extrapolated station

| MD<br>[ft] | Inclination<br>[°] | Azimuth<br>[°] | TVD<br>[ft] | Vert Sect<br>[ft] | North<br>[ft] | East<br>[ft] | Latitude       | Longitude       | DLS<br>[°/100ft] | Comments        |
|------------|--------------------|----------------|-------------|-------------------|---------------|--------------|----------------|-----------------|------------------|-----------------|
| 6439.00    | 0.670              | 340.790        | 6425.56     | -109.57           | -190.40       | -111.18      | 40°12'34.634"N | 104°57'39.427"W | 0.32             |                 |
| 6524.00    | 1.460              | 57.280         | 6510.55     | -108.84           | -189.34       | -110.43      | 40°12'34.644"N | 104°57'39.417"W | 1.71             |                 |
| 6610.00    | 11.600             | 88.040         | 6595.89     | -99.25            | -188.45       | -100.84      | 40°12'34.653"N | 104°57'39.294"W | 12.06            |                 |
| 6695.00    | 18.390             | 89.040         | 6677.95     | -77.29            | -187.93       | -78.87       | 40°12'34.658"N | 104°57'39.011"W | 7.99             |                 |
| 6780.00    | 19.950             | 88.570         | 6758.23     | -49.39            | -187.35       | -50.96       | 40°12'34.664"N | 104°57'38.651"W | 1.84             |                 |
| 6865.00    | 24.740             | 87.660         | 6836.83     | -17.11            | -186.26       | -18.68       | 40°12'34.674"N | 104°57'38.235"W | 5.65             |                 |
| 6950.00    | 34.230             | 89.700         | 6910.74     | 24.65             | -185.41       | 23.10        | 40°12'34.683"N | 104°57'37.696"W | 11.23            |                 |
| 7035.00    | 45.460             | 92.670         | 6975.90     | 79.01             | -186.70       | 77.44        | 40°12'34.670"N | 104°57'36.996"W | 13.40            |                 |
| 7121.00    | 56.890             | 93.600         | 7029.73     | 145.82            | -190.40       | 144.23       | 40°12'34.633"N | 104°57'36.135"W | 13.32            |                 |
| 7206.00    | 62.480             | 93.060         | 7072.62     | 219.08            | -194.65       | 217.45       | 40°12'34.591"N | 104°57'35.191"W | 6.60             |                 |
| 7291.00    | 66.350             | 89.960         | 7109.32     | 295.71            | -196.63       | 294.07       | 40°12'34.572"N | 104°57'34.204"W | 5.62             |                 |
| 7376.00    | 76.710             | 87.090         | 7136.22     | 376.16            | -194.50       | 374.54       | 40°12'34.593"N | 104°57'33.167"W | 12.60            |                 |
| 7455.00    | 83.830             | 85.380         | 7149.57     | 453.75            | -189.38       | 452.18       | 40°12'34.644"N | 104°57'32.166"W | 9.26             |                 |
| 7508.00†   | 87.492             | 85.744         | 7153.57     | 506.40            | -185.29       | 504.86       | 40°12'34.684"N | 104°57'31.487"W | 6.94             | 7" CASING POINT |
| 7588.00    | 93.020             | 86.290         | 7153.22     | 586.12            | -179.74       | 584.64       | 40°12'34.739"N | 104°57'30.459"W | 6.94             |                 |
| 7681.00    | 93.300             | 85.870         | 7148.09     | 678.71            | -173.39       | 677.28       | 40°12'34.801"N | 104°57'29.264"W | 0.54             |                 |
| 7774.00    | 92.470             | 87.100         | 7143.41     | 771.36            | -167.69       | 769.98       | 40°12'34.858"N | 104°57'28.070"W | 1.59             |                 |
| 7867.00    | 92.280             | 87.220         | 7139.56     | 864.13            | -163.09       | 862.79       | 40°12'34.903"N | 104°57'26.873"W | 0.24             |                 |
| 7960.00    | 91.170             | 88.670         | 7136.76     | 956.99            | -159.76       | 955.68       | 40°12'34.936"N | 104°57'25.676"W | 1.96             |                 |
| 8052.00    | 90.280             | 88.550         | 7135.59     | 1048.93           | -157.53       | 1047.65      | 40°12'34.958"N | 104°57'24.491"W | 0.98             |                 |
| 8144.00    | 89.410             | 87.820         | 7135.84     | 1140.86           | -154.61       | 1139.60      | 40°12'34.987"N | 104°57'23.306"W | 1.23             |                 |
| 8236.00    | 88.200             | 88.340         | 7137.76     | 1232.75           | -151.53       | 1231.53      | 40°12'35.017"N | 104°57'22.121"W | 1.43             |                 |
| 8328.00    | 89.230             | 87.430         | 7139.82     | 1324.63           | -148.14       | 1323.44      | 40°12'35.051"N | 104°57'20.936"W | 1.49             |                 |
| 8420.00    | 88.370             | 87.580         | 7141.75     | 1416.49           | -144.13       | 1415.33      | 40°12'35.090"N | 104°57'19.752"W | 0.95             |                 |
| 8512.00    | 88.900             | 87.310         | 7143.94     | 1508.33           | -140.03       | 1507.21      | 40°12'35.131"N | 104°57'18.567"W | 0.65             |                 |
| 8603.00    | 89.660             | 86.680         | 7145.08     | 1599.16           | -135.26       | 1598.08      | 40°12'35.178"N | 104°57'17.396"W | 1.08             |                 |
| 8695.00    | 89.160             | 87.490         | 7146.03     | 1690.99           | -130.58       | 1689.95      | 40°12'35.224"N | 104°57'16.212"W | 1.03             |                 |
| 8787.00    | 89.750             | 86.880         | 7146.91     | 1782.83           | -126.07       | 1781.84      | 40°12'35.269"N | 104°57'15.028"W | 0.92             |                 |
| 8879.00    | 89.940             | 88.160         | 7147.16     | 1874.71           | -122.08       | 1873.75      | 40°12'35.308"N | 104°57'13.843"W | 1.41             |                 |
| 8971.00    | 90.210             | 87.650         | 7147.04     | 1966.61           | -118.72       | 1965.69      | 40°12'35.341"N | 104°57'12.658"W | 0.63             |                 |
| 9063.00    | 91.140             | 87.730         | 7145.95     | 2058.50           | -115.01       | 2057.60      | 40°12'35.378"N | 104°57'11.473"W | 1.01             |                 |
| 9155.00    | 90.370             | 88.280         | 7144.74     | 2150.40           | -111.81       | 2149.54      | 40°12'35.409"N | 104°57'10.288"W | 1.03             |                 |
| 9247.00    | 89.450             | 87.710         | 7144.88     | 2242.31           | -108.59       | 2241.48      | 40°12'35.441"N | 104°57'09.103"W | 1.18             |                 |
| 9339.00    | 90.150             | 86.760         | 7145.20     | 2334.16           | -104.15       | 2333.37      | 40°12'35.485"N | 104°57'07.919"W | 1.28             |                 |
| 9431.00    | 89.660             | 87.900         | 7145.36     | 2426.02           | -99.87        | 2425.27      | 40°12'35.527"N | 104°57'06.734"W | 1.35             |                 |
| 9523.00    | 88.610             | 87.590         | 7146.75     | 2517.91           | -96.25        | 2517.19      | 40°12'35.563"N | 104°57'05.550"W | 1.19             |                 |
| 9615.00    | 88.330             | 88.030         | 7149.20     | 2609.77           | -92.73        | 2609.09      | 40°12'35.597"N | 104°57'04.365"W | 0.57             |                 |
| 9700.00    | 90.340             | 87.420         | 7150.19     | 2694.66           | -89.36        | 2694.01      | 40°12'35.630"N | 104°57'03.270"W | 2.47             |                 |
| 9785.00    | 89.350             | 88.180         | 7150.42     | 2779.57           | -86.10        | 2778.94      | 40°12'35.663"N | 104°57'02.176"W | 1.47             |                 |
| 9870.00    | 89.600             | 88.590         | 7151.20     | 2864.51           | -83.70        | 2863.91      | 40°12'35.686"N | 104°57'01.081"W | 0.56             |                 |
| 9955.00    | 89.450             | 87.520         | 7151.90     | 2949.43           | -80.82        | 2948.85      | 40°12'35.715"N | 104°56'59.986"W | 1.27             |                 |
| 10040.00   | 89.970             | 87.290         | 7152.33     | 3034.30           | -76.97        | 3033.77      | 40°12'35.753"N | 104°56'58.891"W | 0.67             |                 |
| 10125.00   | 89.010             | 88.150         | 7153.09     | 3119.20           | -73.59        | 3118.69      | 40°12'35.786"N | 104°56'57.797"W | 1.52             |                 |
| 10210.00   | 89.260             | 87.770         | 7154.37     | 3204.11           | -70.56        | 3203.63      | 40°12'35.816"N | 104°56'56.702"W | 0.54             |                 |
| 10295.00   | 89.480             | 87.750         | 7155.31     | 3289.01           | -67.24        | 3288.56      | 40°12'35.848"N | 104°56'55.607"W | 0.26             |                 |

# Actual Wellpath Report

BENSON FARMS 11N-19HZ AWP

Page 4 of 6

| REFERENCE WELLPATH IDENTIFICATION |                                 |          |                                                           |
|-----------------------------------|---------------------------------|----------|-----------------------------------------------------------|
| Operator                          | KERR-MCGEE OIL & GAS ONSHORE LP | Slot     | SLOT#25 BENSON FARMS 11N-19HZ (2105'FSL & 50'FWL, SEC.24) |
| Area                              | COLORADO                        | Well     | BENSON FARMS 11N-19HZ                                     |
| Field                             | WELD COUNTY (KERR MCGEE)        | Wellbore | BENSON FARMS 11N-19HZ AWB                                 |
| Facility                          | SEC.24-T3N-R68W                 |          |                                                           |

## WELLPATH DATA (138 stations)

| MD<br>[ft] | Inclination<br>[°] | Azimuth<br>[°] | TVD<br>[ft] | Vert Sect<br>[ft] | North<br>[ft] | East<br>[ft] | Latitude       | Longitude       | DLS<br>[°/100ft] | Comments |
|------------|--------------------|----------------|-------------|-------------------|---------------|--------------|----------------|-----------------|------------------|----------|
| 10381.00   | 90.370             | 87.320         | 7155.42     | 3374.89           | -63.54        | 3374.48      | 40°12'35.885"N | 104°56'54.500"W | 1.15             |          |
| 10466.00   | 89.820             | 87.520         | 7155.28     | 3459.77           | -59.72        | 3459.39      | 40°12'35.923"N | 104°56'53.405"W | 0.69             |          |
| 10551.00   | 89.320             | 88.180         | 7155.92     | 3544.68           | -56.53        | 3544.33      | 40°12'35.954"N | 104°56'52.310"W | 0.97             |          |
| 10636.00   | 89.390             | 87.880         | 7156.87     | 3629.60           | -53.61        | 3629.27      | 40°12'35.983"N | 104°56'51.216"W | 0.36             |          |
| 10721.00   | 89.260             | 87.780         | 7157.87     | 3714.50           | -50.39        | 3714.21      | 40°12'36.014"N | 104°56'50.121"W | 0.19             |          |
| 10806.00   | 90.220             | 87.610         | 7158.26     | 3799.40           | -46.97        | 3799.14      | 40°12'36.048"N | 104°56'49.026"W | 1.15             |          |
| 10891.00   | 90.950             | 87.550         | 7157.39     | 3884.28           | -43.38        | 3884.05      | 40°12'36.083"N | 104°56'47.932"W | 0.86             |          |
| 10975.00   | 89.970             | 87.400         | 7156.72     | 3968.16           | -39.68        | 3967.97      | 40°12'36.120"N | 104°56'46.850"W | 1.18             |          |
| 11060.00   | 90.190             | 87.690         | 7156.60     | 4053.05           | -36.04        | 4052.89      | 40°12'36.156"N | 104°56'45.755"W | 0.43             |          |
| 11146.00   | 90.650             | 87.400         | 7155.97     | 4138.94           | -32.35        | 4138.81      | 40°12'36.192"N | 104°56'44.648"W | 0.63             |          |
| 11231.00   | 89.170             | 87.970         | 7156.10     | 4223.83           | -28.92        | 4223.74      | 40°12'36.226"N | 104°56'43.553"W | 1.87             |          |
| 11316.00   | 89.850             | 87.190         | 7156.83     | 4308.72           | -25.33        | 4308.66      | 40°12'36.261"N | 104°56'42.459"W | 1.22             |          |
| 11401.00   | 90.250             | 86.830         | 7156.76     | 4393.56           | -20.90        | 4393.54      | 40°12'36.305"N | 104°56'41.365"W | 0.63             |          |
| 11487.00   | 91.020             | 87.700         | 7155.80     | 4479.42           | -16.80        | 4479.44      | 40°12'36.345"N | 104°56'40.258"W | 1.35             |          |
| 11572.00   | 91.170             | 87.180         | 7154.18     | 4564.28           | -13.00        | 4564.34      | 40°12'36.382"N | 104°56'39.163"W | 0.64             |          |
| 11657.00   | 89.690             | 86.520         | 7153.54     | 4649.11           | -8.33         | 4649.20      | 40°12'36.428"N | 104°56'38.069"W | 1.91             |          |
| 11742.00   | 90.090             | 86.270         | 7153.70     | 4733.89           | -2.98         | 4734.03      | 40°12'36.481"N | 104°56'36.976"W | 0.55             |          |
| 11827.00   | 89.450             | 86.750         | 7154.04     | 4818.69           | 2.19          | 4818.87      | 40°12'36.532"N | 104°56'35.882"W | 0.94             |          |
| 11912.00   | 89.200             | 87.950         | 7155.05     | 4903.55           | 6.12          | 4903.78      | 40°12'36.571"N | 104°56'34.788"W | 1.44             |          |
| 11997.00   | 89.750             | 87.220         | 7155.82     | 4988.44           | 9.70          | 4988.70      | 40°12'36.606"N | 104°56'33.694"W | 1.08             |          |
| 12082.00   | 89.560             | 88.340         | 7156.34     | 5073.34           | 12.99         | 5073.63      | 40°12'36.638"N | 104°56'32.599"W | 1.34             |          |
| 12167.00   | 90.060             | 88.020         | 7156.62     | 5158.27           | 15.69         | 5158.59      | 40°12'36.665"N | 104°56'31.504"W | 0.70             |          |
| 12252.00   | 89.600             | 88.380         | 7156.87     | 5243.20           | 18.36         | 5243.54      | 40°12'36.691"N | 104°56'30.409"W | 0.69             |          |
| 12337.00   | 89.630             | 88.530         | 7157.44     | 5328.15           | 20.65         | 5328.51      | 40°12'36.713"N | 104°56'29.314"W | 0.18             |          |
| 12422.00   | 91.380             | 88.950         | 7156.69     | 5413.10           | 22.52         | 5413.48      | 40°12'36.732"N | 104°56'28.218"W | 2.12             |          |
| 12507.00   | 90.590             | 90.090         | 7155.23     | 5498.08           | 23.24         | 5498.47      | 40°12'36.739"N | 104°56'27.123"W | 1.63             |          |
| 12592.00   | 89.750             | 89.760         | 7154.98     | 5583.07           | 23.35         | 5583.46      | 40°12'36.739"N | 104°56'26.027"W | 1.06             |          |
| 12677.00   | 89.190             | 90.230         | 7155.77     | 5668.06           | 23.35         | 5668.46      | 40°12'36.739"N | 104°56'24.932"W | 0.86             |          |
| 12763.00   | 89.630             | 90.220         | 7156.65     | 5754.06           | 23.02         | 5754.45      | 40°12'36.736"N | 104°56'23.823"W | 0.51             |          |
| 12848.00   | 90.560             | 89.700         | 7156.51     | 5839.05           | 23.08         | 5839.45      | 40°12'36.736"N | 104°56'22.728"W | 1.25             |          |
| 12933.00   | 89.630             | 89.570         | 7156.37     | 5924.04           | 23.62         | 5924.45      | 40°12'36.741"N | 104°56'21.632"W | 1.10             |          |
| 13018.00   | 90.220             | 90.200         | 7156.48     | 6009.04           | 23.79         | 6009.45      | 40°12'36.743"N | 104°56'20.537"W | 1.02             |          |
| 13103.00   | 89.880             | 91.300         | 7156.41     | 6094.04           | 22.68         | 6094.44      | 40°12'36.732"N | 104°56'19.441"W | 1.35             |          |
| 13188.00   | 89.720             | 91.980         | 7156.70     | 6179.02           | 20.24         | 6179.40      | 40°12'36.707"N | 104°56'18.346"W | 0.82             |          |
| 13274.00   | 90.770             | 93.550         | 7156.34     | 6264.94           | 16.09         | 6265.30      | 40°12'36.666"N | 104°56'17.239"W | 2.20             |          |
| 13359.00   | 90.490             | 94.370         | 7155.40     | 6349.78           | 10.22         | 6350.09      | 40°12'36.608"N | 104°56'16.146"W | 1.02             |          |
| 13444.00   | 90.280             | 95.740         | 7154.83     | 6434.51           | 2.74          | 6434.76      | 40°12'36.534"N | 104°56'15.055"W | 1.63             |          |
| 13529.00   | 89.260             | 95.270         | 7155.17     | 6519.18           | -5.42         | 6519.36      | 40°12'36.453"N | 104°56'13.964"W | 1.32             |          |
| 13614.00   | 89.660             | 93.940         | 7155.97     | 6603.95           | -12.24        | 6604.08      | 40°12'36.385"N | 104°56'12.872"W | 1.63             |          |
| 13699.00   | 90.250             | 93.920         | 7156.04     | 6688.80           | -18.07        | 6688.88      | 40°12'36.328"N | 104°56'11.780"W | 0.69             |          |
| 13785.00   | 91.050             | 93.770         | 7155.06     | 6774.64           | -23.83        | 6774.68      | 40°12'36.270"N | 104°56'10.674"W | 0.95             |          |
| 13870.00   | 90.400             | 95.140         | 7153.99     | 6859.43           | -30.44        | 6859.42      | 40°12'36.205"N | 104°56'09.581"W | 1.78             |          |
| 13955.00   | 89.450             | 94.120         | 7154.10     | 6944.20           | -37.30        | 6944.14      | 40°12'36.137"N | 104°56'08.490"W | 1.64             |          |
| 14040.00   | 90.550             | 93.980         | 7154.10     | 7029.04           | -43.30        | 7028.92      | 40°12'36.077"N | 104°56'07.397"W | 1.30             |          |
| 14125.00   | 89.260             | 93.920         | 7154.24     | 7113.88           | -49.16        | 7113.72      | 40°12'36.019"N | 104°56'06.304"W | 1.52             |          |

## REFERENCE WELLPATH IDENTIFICATION

|          |                                 |          |                                                           |
|----------|---------------------------------|----------|-----------------------------------------------------------|
| Operator | KERR-MCGEE OIL & GAS ONSHORE LP | Slot     | SLOT#25 BENSON FARMS 11N-19HZ (2105'FSL & 50'FWL, SEC.24) |
| Area     | COLORADO                        | Well     | BENSON FARMS 11N-19HZ                                     |
| Field    | WELD COUNTY (KERR MCGEE)        | Wellbore | BENSON FARMS 11N-19HZ AWB                                 |
| Facility | SEC.24-T3N-R68W                 |          |                                                           |

## WELLPATH DATA (138 stations)

| MD [ft]  | Inclination [°] | Azimuth [°] | TVD [ft] | Vert Sect [ft] | North [ft] | East [ft] | Latitude       | Longitude       | DLS [°/100ft] | Comments                |
|----------|-----------------|-------------|----------|----------------|------------|-----------|----------------|-----------------|---------------|-------------------------|
| 14210.00 | 89.930          | 93.840      | 7154.84  | 7198.73        | -54.91     | 7198.52   | 40°12'35.962"N | 104°56'05.211"W | 0.79          |                         |
| 14246.00 | 90.240          | 93.760      | 7154.79  | 7234.67        | -57.29     | 7234.44   | 40°12'35.938"N | 104°56'04.748"W | 0.89          | LAST BHI MWD+IFR SURVEY |
| 14306.00 | 90.240          | 93.760      | 7154.54  | 7294.57        | -61.23     | 7294.31   | 40°12'35.899"N | 104°56'03.976"W | 0.00          | PROJECTION TO BIT       |

## HOLE & CASING SECTIONS - Ref Wellbore: BENSON FARMS 11N-19HZ AWB Ref Wellpath: BENSON FARMS 11N-19HZ AWP

| String/Diameter         | Start MD [ft] | End MD [ft] | Interval [ft] | Start TVD [ft] | End TVD [ft] | Start N/S [ft] | Start E/W [ft] | End N/S [ft] | End E/W [ft] |
|-------------------------|---------------|-------------|---------------|----------------|--------------|----------------|----------------|--------------|--------------|
| 13.5in Open Hole        | 16.00         | 1242.00     | 1226.00       | 16.00          | 1241.93      | 0.00           | 0.00           | -7.98        | -8.53        |
| 9.625in Casing Surface  | 16.00         | 1232.00     | 1216.00       | 16.00          | 1231.93      | 0.00           | 0.00           | -7.99        | -8.47        |
| 8.75in Open Hole        | 1242.00       | 7518.00     | 6276.00       | 1241.93        | 7153.95      | -7.98          | -8.53          | -184.56      | 514.83       |
| 7in Casing Intermediate | 16.00         | 7508.00     | 7492.00       | 16.00          | 7153.57      | 0.00           | 0.00           | -185.29      | 504.86       |
| 6.125in Open Hole       | 7518.00       | 14306.00    | 6788.00       | 7153.95        | 7154.54      | -184.56        | 514.83         | -61.23       | 7294.31      |

## WELLPATH COMPOSITION - Ref Wellbore: BENSON FARMS 11N-19HZ AWB Ref Wellpath: BENSON FARMS 11N-19HZ AWP

| Start MD [ft] | End MD [ft] | Positional Uncertainty Model         | Log Name/Comment                                 | Wellbore                  |
|---------------|-------------|--------------------------------------|--------------------------------------------------|---------------------------|
| 16.00         | 1142.00     | Generic gyro - continuous (Standard) | MS GYRO SURVEYS <116-1142>                       | BENSON FARMS 11N-19HZ AWB |
| 1142.00       | 7455.00     | NaviTrak (IFR)                       | BHI NAVITRAK MWD+IFR 8 3/4" <1311-7455>          | BENSON FARMS 11N-19HZ AWB |
| 7455.00       | 14246.00    | NaviTrak (IFR)                       | BHI NAVITRAK MWD+IFR SURVEYS 6 1/8" <7588-14246> | BENSON FARMS 11N-19HZ AWB |
| 14246.00      | 14306.00    | Blind Drilling (std)                 | Projection to bit                                | BENSON FARMS 11N-19HZ AWB |

# Actual Wellpath Report

BENSON FARMS 11N-19HZ AWP

Page 6 of 6

| REFERENCE WELLPATH IDENTIFICATION |                                 |          |                                                           |
|-----------------------------------|---------------------------------|----------|-----------------------------------------------------------|
| Operator                          | KERR-MCGEE OIL & GAS ONSHORE LP | Slot     | SLOT#25 BENSON FARMS 11N-19HZ (2105'FSL & 50'FWL, SEC.24) |
| Area                              | COLORADO                        | Well     | BENSON FARMS 11N-19HZ                                     |
| Field                             | WELD COUNTY (KERR MCGEE)        | Wellbore | BENSON FARMS 11N-19HZ AWB                                 |
| Facility                          | SEC.24-T3N-R68W                 |          |                                                           |

| WELLPATH COMMENTS |                    |                |             |                           |
|-------------------|--------------------|----------------|-------------|---------------------------|
| MD<br>[ft]        | Inclination<br>[°] | Azimuth<br>[°] | TVD<br>[ft] | Comment                   |
| 16.00             | 0.000              | 226.310        | 16.00       | TIE ON                    |
| 116.00            | 0.580              | 226.310        | 116.00      | BEGIN GYRO SURVEYS        |
| 1142.00           | 0.480              | 238.530        | 1141.93     | TIE ONTO GYRO SURVEYS     |
| 1311.00           | 0.340              | 319.470        | 1310.92     | BEGIN BHI MWD+IFR SURVEYS |
| 7508.00           | 87.492             | 85.744         | 7153.57     | 7" CASING POINT           |
| 14246.00          | 90.240             | 93.760         | 7154.79     | LAST BHI MWD+IFR SURVEY   |
| 14306.00          | 90.240             | 93.760         | 7154.54     | PROJECTION TO BIT         |