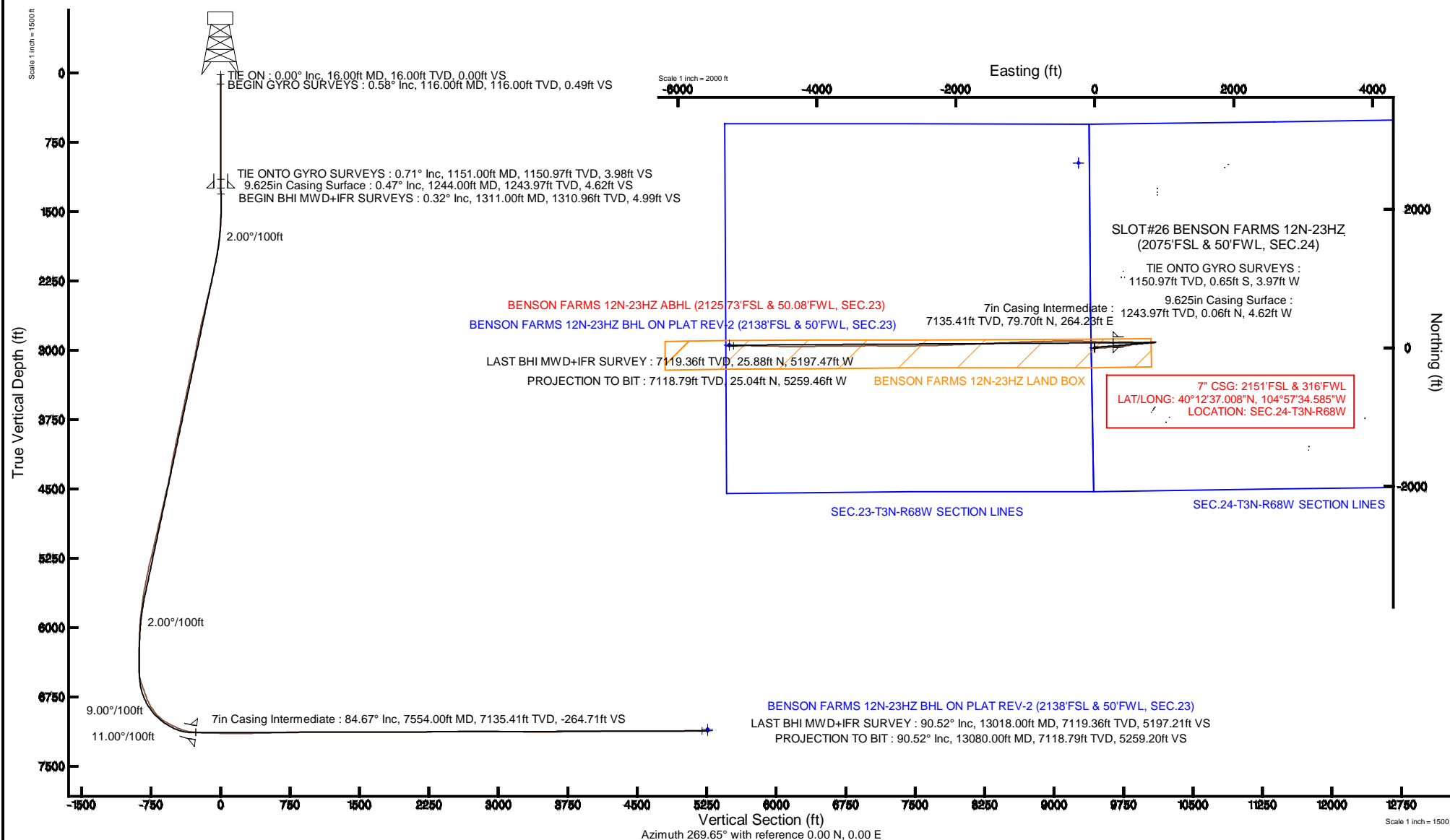


Location:	COLORADO	Slot:	SLOT#26 BENSON FARMS 12N-23HZ (2075'FSL & 50'FWL, SEC.24)
Field:	WELD COUNTY (KERR MCGEE)	Well:	BENSON FARMS 12N-23HZ
Facility:	SEC.24-T3N-R68W	Wellbore:	BENSON FARMS 12N-23HZ PWB

Plot reference wellpath is BENSON FARMS 12N-23HZ (REV-B.0) PWP	
True vertical depths are referenced to XTREME 24 (16' RKB) (RKB)	Grid System: NAD83 / Lambert Colorado SP, Northern Zone (501), US feet
Measured depths are referenced to XTREME 24 (16' RKB) (RKB)	North Reference: True north
XTREME 24 (16' RKB) (RKB) to Mean Sea Level: 4973 feet	Scale: True distance
Mean Sea Level to Mud line (At Slot: SLOTH26 BENSON FARMS 12N-23HZ (2075FSL & 50FWL, SEC.24)): 0 feet	Depths are in feet
Coordinates are in feet referenced to Slot	Created by: robiala01 on 11/Jul/2014



REFERENCE WELLPATH IDENTIFICATION			
Operator	KERR-MCGEE OIL & GAS ONSHORE LP	Slot	SLOT#26 BENSON FARMS 12N-23HZ (2075'FSL & 50'FWL, SEC.24)
Area	COLORADO	Well	BENSON FARMS 12N-23HZ
Field	WELD COUNTY (KERR MCGEE)	Wellbore	BENSON FARMS 12N-23HZ AWB
Facility	SEC.24-T3N-R68W		

REPORT SETUP INFORMATION			
Projection System	NAD83 / Lambert Colorado SP, Northern Zone (501), US feet	Software System	WellArchitect® 4.0.0
North Reference	True	User	Robiale01
Scale	0.999957	Report Generated	11/Jul/2014 at 12:21
Convergence at slot	n/a	Database/Source file	WellArchitectDB/BENSON_FARMS_12N-23HZ_AWB.xml

WELLPATH LOCATION						
	Local coordinates		Grid coordinates		Geographic coordinates	
	North[ft]	East[ft]	Easting[US ft]	Northing[US ft]	Latitude	Longitude
Slot Location	-1667.83	-3575.93	3150661.56	1319825.83	40°12'36.220"N	104°57'37.991"W
Facility Reference Pt			3154226.88	1321515.82	40°12'52.704"N	104°56'51.900"W
Field Reference Pt			3197771.84	1268891.29	40°04'09.600"N	104°47'36.000"W

WELLPATH DATUM			
Calculation method	Minimum curvature	XTREME 24 (16' RKB) (RKB) to Facility Vertical Datum	4973.00ft
Horizontal Reference Pt	Slot	XTREME 24 (16' RKB) (RKB) to Mean Sea Level	4973.00ft
Vertical Reference Pt	XTREME 24 (16' RKB) (RKB)	XTREME 24 (16' RKB) (RKB) to Mud Line at Slot (SLOT#26 BENSON FARMS 12N-23HZ (2075'FSL & 50'FWL, SEC.24))	4973.00ft
MD Reference Pt	XTREME 24 (16' RKB) (RKB)	Section Origin	N 0.00, E 0.00 ft
Field Vertical Reference	Mean Sea Level	Section Azimuth	270.27°

Actual Wellpath Report

BENSON FARMS 12N-23HZ AWP

Page 2 of 6

REFERENCE WELLPATH IDENTIFICATION			
Operator	KERR-MCGEE OIL & GAS ONSHORE LP	Slot	SLOT#26 BENSON FARMS 12N-23HZ (2075'FSL & 50'FWL, SEC.24)
Area	COLORADO	Well	BENSON FARMS 12N-23HZ
Field	WELD COUNTY (KERR MCGEE)	Wellbore	BENSON FARMS 12N-23HZ AWB
Facility	SEC.24-T3N-R68W		

WELLPATH DATA (121 stations) † = interpolated/extrapolated station										
MD [ft]	Inclination [°]	Azimuth [°]	TVD [ft]	Vert Sect [ft]	North [ft]	East [ft]	Latitude	Longitude	DLS [°/100ft]	Comments
0.00†	0.000	281.950	0.00	0.00	0.00	0.00	40°12'36.220"N	104°57'37.991"W	0.00	
16.00	0.000	281.950	16.00	0.00	0.00	0.00	40°12'36.220"N	104°57'37.991"W	0.00	TIE ON
116.00	0.580	281.950	116.00	0.50	0.10	-0.50	40°12'36.221"N	104°57'37.997"W	0.58	BEGIN GYRO SURVEYS
216.00	0.500	239.790	215.99	1.37	-0.01	-1.37	40°12'36.220"N	104°57'38.009"W	0.40	
316.00	0.490	217.010	315.99	2.00	-0.57	-2.00	40°12'36.214"N	104°57'38.017"W	0.20	
416.00	0.420	204.780	415.99	2.41	-1.25	-2.41	40°12'36.208"N	104°57'38.022"W	0.12	
516.00	0.400	225.650	515.98	2.81	-1.82	-2.82	40°12'36.202"N	104°57'38.027"W	0.15	
616.00	0.240	173.260	615.98	3.03	-2.27	-3.04	40°12'36.198"N	104°57'38.030"W	0.32	
716.00	0.190	128.980	715.98	2.88	-2.59	-2.89	40°12'36.194"N	104°57'38.028"W	0.17	
816.00	0.050	38.300	815.98	2.72	-2.66	-2.73	40°12'36.194"N	104°57'38.026"W	0.20	
916.00	0.290	354.690	915.98	2.72	-2.37	-2.73	40°12'36.197"N	104°57'38.026"W	0.26	
1016.00	0.460	324.940	1015.98	2.97	-1.79	-2.98	40°12'36.202"N	104°57'38.029"W	0.25	
1116.00	0.760	315.750	1115.97	3.67	-0.99	-3.68	40°12'36.210"N	104°57'38.038"W	0.31	
1151.00	0.710	321.370	1150.97	3.97	-0.65	-3.97	40°12'36.214"N	104°57'38.042"W	0.25	TIE ONTO GYRO SURVEYS
1311.00	0.320	297.210	1310.96	4.99	0.33	-4.99	40°12'36.223"N	104°57'38.055"W	0.27	BEGIN BHI MWD+IFR SURVEYS
1405.00	0.560	299.150	1404.96	5.63	0.67	-5.62	40°12'36.227"N	104°57'38.063"W	0.26	
1499.00	0.880	98.130	1498.96	5.31	0.79	-5.31	40°12'36.228"N	104°57'38.059"W	1.51	
1593.00	2.890	74.640	1592.90	2.32	1.32	-2.31	40°12'36.233"N	104°57'38.021"W	2.25	
1688.00	4.350	84.750	1687.71	-3.58	2.28	3.59	40°12'36.243"N	104°57'37.945"W	1.67	
1781.00	6.070	101.020	1780.33	-11.92	1.67	11.93	40°12'36.236"N	104°57'37.837"W	2.42	
1876.00	8.680	100.840	1874.54	-23.90	-0.64	23.90	40°12'36.214"N	104°57'37.683"W	2.75	
1970.00	10.040	99.670	1967.28	-38.96	-3.35	38.94	40°12'36.187"N	104°57'37.489"W	1.46	
2066.00	11.090	91.360	2061.66	-56.45	-4.98	56.43	40°12'36.171"N	104°57'37.264"W	1.92	
2158.00	12.000	89.330	2151.80	-74.86	-5.08	74.83	40°12'36.170"N	104°57'37.026"W	1.08	
2250.00	12.370	90.210	2241.72	-94.27	-5.00	94.25	40°12'36.171"N	104°57'36.776"W	0.45	
2342.00	13.430	84.170	2331.41	-114.75	-3.95	114.74	40°12'36.181"N	104°57'36.512"W	1.86	
2434.00	13.530	84.140	2420.87	-136.08	-1.77	136.07	40°12'36.203"N	104°57'36.237"W	0.11	
2525.00	13.500	83.150	2509.35	-157.20	0.59	157.21	40°12'36.226"N	104°57'35.965"W	0.26	
2615.00	13.430	82.600	2596.88	-177.98	3.19	178.00	40°12'36.251"N	104°57'35.697"W	0.16	
2707.00	13.130	83.300	2686.42	-198.94	5.78	198.97	40°12'36.277"N	104°57'35.426"W	0.37	
2799.00	12.560	82.320	2776.11	-219.22	8.34	219.27	40°12'36.302"N	104°57'35.165"W	0.66	
2891.00	11.980	82.160	2866.01	-238.58	10.98	238.64	40°12'36.328"N	104°57'34.915"W	0.63	
2982.00	10.550	86.560	2955.26	-256.25	12.76	256.31	40°12'36.346"N	104°57'34.687"W	1.83	
3074.00	11.460	87.560	3045.57	-273.78	13.66	273.85	40°12'36.355"N	104°57'34.461"W	1.01	
3166.00	12.570	81.840	3135.55	-292.81	15.47	292.89	40°12'36.373"N	104°57'34.216"W	1.77	
3258.00	13.540	91.360	3225.18	-313.49	16.63	313.57	40°12'36.384"N	104°57'33.949"W	2.56	
3350.00	12.530	92.560	3314.81	-334.23	15.93	334.31	40°12'36.377"N	104°57'33.682"W	1.14	
3442.00	11.770	90.210	3404.75	-353.58	15.45	353.66	40°12'36.373"N	104°57'33.433"W	0.99	
3534.00	11.550	86.950	3494.85	-372.16	15.91	372.24	40°12'36.377"N	104°57'33.193"W	0.75	
3625.00	12.140	86.590	3583.92	-390.81	16.96	390.89	40°12'36.388"N	104°57'32.953"W	0.65	
3717.00	11.980	78.070	3673.89	-409.79	19.51	409.89	40°12'36.413"N	104°57'32.708"W	1.94	
3809.00	11.940	75.990	3763.90	-428.35	23.79	428.47	40°12'36.455"N	104°57'32.468"W	0.47	
3901.00	12.520	81.290	3853.81	-447.42	27.60	447.56	40°12'36.493"N	104°57'32.222"W	1.37	
3994.00	12.500	81.880	3944.60	-467.34	30.55	467.49	40°12'36.522"N	104°57'31.965"W	0.14	
4087.00	11.880	80.150	4035.51	-486.72	33.61	486.88	40°12'36.552"N	104°57'31.715"W	0.77	

Actual Wellpath Report

BENSON FARMS 12N-23HZ AWP

Page 3 of 6

REFERENCE WELLPATH IDENTIFICATION			
Operator	KERR-MCGEE OIL & GAS ONSHORE LP	Slot	SLOT#26 BENSON FARMS 12N-23HZ (2075'FSL & 50'FWL, SEC.24)
Area	COLORADO	Well	BENSON FARMS 12N-23HZ
Field	WELD COUNTY (KERR MCGEE)	Wellbore	BENSON FARMS 12N-23HZ AWB
Facility	SEC.24-T3N-R68W		

WELLPATH DATA (121 stations) † = interpolated/extrapolated station										
MD [ft]	Inclination [°]	Azimuth [°]	TVD [ft]	Vert Sect [ft]	North [ft]	East [ft]	Latitude	Longitude	DLS [°/100ft]	Comments
4180.00	11.590	75.110	4126.56	-505.16	37.65	505.34	40°12'36.592"N	104°57'31.478"W	1.15	
4273.00	10.450	64.500	4217.86	-521.77	43.68	521.99	40°12'36.652"N	104°57'31.263"W	2.50	
4366.00	11.950	59.770	4309.09	-537.66	52.16	537.92	40°12'36.735"N	104°57'31.058"W	1.89	
4460.00	12.130	68.000	4401.02	-555.19	60.76	555.48	40°12'36.820"N	104°57'30.831"W	1.83	
4552.00	13.330	81.250	4490.78	-574.61	66.00	574.93	40°12'36.872"N	104°57'30.581"W	3.42	
4645.00	13.410	87.060	4581.26	-595.97	68.18	596.30	40°12'36.894"N	104°57'30.305"W	1.45	
4737.00	12.350	90.930	4670.95	-616.46	68.57	616.79	40°12'36.898"N	104°57'30.041"W	1.48	
4822.00	12.210	92.210	4754.01	-634.53	68.07	634.86	40°12'36.893"N	104°57'29.808"W	0.36	
4907.00	13.150	91.790	4836.93	-653.18	67.43	653.51	40°12'36.886"N	104°57'29.568"W	1.11	
4992.00	13.440	83.090	4919.66	-672.65	68.31	672.98	40°12'36.895"N	104°57'29.317"W	2.38	
5077.00	12.790	79.810	5002.45	-691.70	71.17	692.05	40°12'36.923"N	104°57'29.071"W	1.16	
5162.00	13.280	81.470	5085.26	-710.60	74.28	710.97	40°12'36.954"N	104°57'28.827"W	0.73	
5247.00	13.710	82.490	5167.91	-730.23	77.04	730.61	40°12'36.981"N	104°57'28.574"W	0.58	
5333.00	13.230	88.110	5251.55	-750.16	78.70	750.55	40°12'36.998"N	104°57'28.317"W	1.62	
5418.00	12.610	89.050	5334.39	-769.16	79.17	769.55	40°12'37.002"N	104°57'28.072"W	0.77	
5503.00	11.960	87.040	5417.45	-787.23	79.78	787.62	40°12'37.008"N	104°57'27.839"W	0.92	
5587.00	10.740	85.840	5499.80	-803.72	80.80	804.12	40°12'37.018"N	104°57'27.627"W	1.48	
5673.00	10.230	84.630	5584.37	-819.31	82.10	819.71	40°12'37.031"N	104°57'27.426"W	0.65	
5758.00	9.330	87.300	5668.13	-833.71	83.13	834.11	40°12'37.041"N	104°57'27.240"W	1.19	
5843.00	7.310	88.790	5752.23	-845.99	83.57	846.40	40°12'37.046"N	104°57'27.082"W	2.39	
5928.00	6.420	86.160	5836.62	-856.14	84.00	856.55	40°12'37.050"N	104°57'26.951"W	1.11	
6013.00	5.090	93.360	5921.19	-864.64	84.10	865.05	40°12'37.051"N	104°57'26.841"W	1.78	
6098.00	3.230	85.940	6005.97	-870.80	84.04	871.21	40°12'37.050"N	104°57'26.762"W	2.27	
6183.00	2.080	124.630	6090.88	-874.46	83.34	874.87	40°12'37.043"N	104°57'26.715"W	2.43	
6268.00	1.820	123.750	6175.83	-876.86	81.71	877.26	40°12'37.027"N	104°57'26.684"W	0.31	
6354.00	0.750	119.160	6261.81	-878.49	80.68	878.89	40°12'37.017"N	104°57'26.663"W	1.25	
6439.00	0.730	94.520	6346.80	-879.52	80.36	879.91	40°12'37.014"N	104°57'26.650"W	0.37	
6524.00	0.800	95.450	6431.79	-880.65	80.26	881.04	40°12'37.013"N	104°57'26.635"W	0.08	
6610.00	9.240	269.080	6517.45	-874.33	80.10	874.72	40°12'37.011"N	104°57'26.717"W	11.67	
6695.00	19.260	270.440	6599.73	-853.43	80.09	853.82	40°12'37.011"N	104°57'26.986"W	11.79	
6780.00	18.430	269.960	6680.17	-825.98	80.19	826.37	40°12'37.012"N	104°57'27.340"W	0.99	
6865.00	20.830	270.880	6760.23	-797.43	80.42	797.82	40°12'37.015"N	104°57'27.708"W	2.85	
6950.00	29.400	267.210	6837.12	-761.41	79.63	761.80	40°12'37.007"N	104°57'28.172"W	10.24	
7035.00	37.370	269.530	6908.04	-714.71	78.40	715.09	40°12'36.995"N	104°57'28.774"W	9.49	
7120.00	46.550	268.860	6971.18	-657.95	77.57	658.32	40°12'36.986"N	104°57'29.506"W	10.81	
7206.00	58.410	273.250	7023.48	-589.90	79.03	590.28	40°12'37.001"N	104°57'30.383"W	14.37	
7291.00	65.650	271.280	7063.33	-514.92	81.96	515.32	40°12'37.030"N	104°57'31.349"W	8.76	
7376.00	67.590	269.980	7097.06	-436.91	82.81	437.31	40°12'37.038"N	104°57'32.354"W	2.68	
7460.00	78.200	268.210	7121.73	-356.76	81.51	357.15	40°12'37.025"N	104°57'33.388"W	12.79	
7480.00	79.960	268.030	7125.52	-337.14	80.86	337.53	40°12'37.019"N	104°57'33.641"W	8.84	
7554.00†	84.675	270.135	7135.41	-263.84	79.70	264.23	40°12'37.008"N	104°57'34.585"W	6.97	7" CASING POINT
7608.00	88.120	271.650	7138.80	-209.96	80.54	210.35	40°12'37.016"N	104°57'35.280"W	6.97	
7700.00	88.460	272.100	7141.55	-118.04	83.55	118.44	40°12'37.046"N	104°57'36.464"W	0.61	
7792.00	88.890	272.300	7143.67	-26.12	87.08	26.53	40°12'37.080"N	104°57'37.649"W	0.52	
7884.00	89.600	272.150	7144.89	65.82	90.65	-65.39	40°12'37.116"N	104°57'38.834"W	0.79	

REFERENCE WELLPATH IDENTIFICATION			
Operator	KERR-MCGEE OIL & GAS ONSHORE LP	Slot	SLOT#26 BENSON FARMS 12N-23HZ (2075'FSL & 50'FWL, SEC.24)
Area	COLORADO	Well	BENSON FARMS 12N-23HZ
Field	WELD COUNTY (KERR MCGEE)	Wellbore	BENSON FARMS 12N-23HZ AWB
Facility	SEC.24-T3N-R68W		

WELLPATH DATA (121 stations)										
MD [ft]	Inclination [°]	Azimuth [°]	TVD [ft]	Vert Sect [ft]	North [ft]	East [ft]	Latitude	Longitude	DLS [°/100ft]	Comments
7976.00	89.820	271.910	7145.35	157.78	93.91	-157.33	40°12'37.148"N	104°57'40.019"W	0.35	
8160.00	91.020	270.060	7144.00	341.75	97.07	-341.29	40°12'37.179"N	104°57'42.390"W	1.20	
8337.00	91.610	269.010	7139.94	518.68	95.63	-518.23	40°12'37.165"N	104°57'44.671"W	0.68	
8508.00	92.070	268.730	7134.45	689.54	92.26	-689.11	40°12'37.132"N	104°57'46.873"W	0.31	
8593.00	90.860	269.030	7132.28	774.49	90.60	-774.06	40°12'37.115"N	104°57'47.968"W	1.47	
8763.00	89.380	268.120	7131.92	944.41	86.37	-944.00	40°12'37.073"N	104°57'50.159"W	1.02	
8933.00	89.530	267.100	7133.54	1114.21	79.29	-1113.85	40°12'37.003"N	104°57'52.348"W	0.61	
9103.00	91.320	267.430	7132.28	1283.97	71.17	-1283.64	40°12'36.923"N	104°57'54.536"W	1.07	
9188.00	91.200	268.280	7130.41	1368.87	67.99	-1368.56	40°12'36.892"N	104°57'55.631"W	1.01	
9273.00	89.500	268.020	7129.89	1453.81	65.25	-1453.51	40°12'36.864"N	104°57'56.726"W	2.02	
9443.00	90.030	267.170	7130.59	1623.62	58.12	-1623.36	40°12'36.794"N	104°57'58.915"W	0.59	
9613.00	89.900	267.450	7130.69	1793.39	50.14	-1793.17	40°12'36.715"N	104°58'01.104"W	0.18	
9698.00	89.840	267.650	7130.88	1878.29	46.50	-1878.09	40°12'36.679"N	104°58'02.198"W	0.25	
9868.00	90.610	268.240	7130.22	2048.15	40.41	-2047.98	40°12'36.618"N	104°58'04.388"W	0.57	
10039.00	90.000	268.080	7129.31	2219.03	34.92	-2218.89	40°12'36.564"N	104°58'06.591"W	0.37	
10124.00	91.070	268.810	7128.51	2303.98	32.61	-2303.85	40°12'36.541"N	104°58'07.686"W	1.52	
10294.00	91.200	268.720	7125.14	2473.89	28.95	-2473.78	40°12'36.505"N	104°58'09.876"W	0.09	
10379.00	90.460	269.220	7123.91	2558.86	27.42	-2558.76	40°12'36.490"N	104°58'10.971"W	1.05	
10550.00	90.490	269.540	7122.50	2729.83	25.57	-2729.74	40°12'36.471"N	104°58'13.175"W	0.19	
10720.00	89.410	270.540	7122.64	2899.82	25.69	-2899.73	40°12'36.472"N	104°58'15.366"W	0.87	
10975.00	88.710	270.270	7126.83	3154.79	27.49	-3154.69	40°12'36.490"N	104°58'18.653"W	0.29	
11230.00	89.290	269.170	7131.28	3409.73	26.25	-3409.64	40°12'36.477"N	104°58'21.939"W	0.49	
11485.00	91.570	269.610	7129.36	3664.68	23.53	-3664.61	40°12'36.450"N	104°58'25.225"W	0.91	
11655.00	90.340	269.440	7126.53	3834.63	22.12	-3834.57	40°12'36.436"N	104°58'27.416"W	0.73	
11911.00	90.800	269.800	7123.98	4090.60	20.42	-4090.55	40°12'36.418"N	104°58'30.715"W	0.23	
12166.00	89.880	269.840	7122.47	4345.59	19.62	-4345.55	40°12'36.410"N	104°58'34.002"W	0.36	
12422.00	90.270	271.130	7122.14	4601.58	21.79	-4601.53	40°12'36.431"N	104°58'37.301"W	0.53	
12677.00	90.210	270.960	7121.07	4856.56	26.44	-4856.48	40°12'36.477"N	104°58'40.587"W	0.07	
12848.00	90.210	269.720	7120.44	5027.55	27.45	-5027.48	40°12'36.486"N	104°58'42.791"W	0.73	
13018.00	90.520	269.220	7119.36	5197.53	25.88	-5197.47	40°12'36.470"N	104°58'44.982"W	0.35	LAST BHI MWD+IFR SURVEY
13080.00	90.520	269.220	7118.79	5259.52	25.04	-5259.46	40°12'36.462"N	104°58'45.781"W	0.00	PROJECTION TO BIT

REFERENCE WELLPATH IDENTIFICATION			
Operator	KERR-MCGEE OIL & GAS ONSHORE LP	Slot	SLOT#26 BENSON FARMS 12N-23HZ (2075'FSL & 50'FWL, SEC.24)
Area	COLORADO	Well	BENSON FARMS 12N-23HZ
Field	WELD COUNTY (KERR MCGEE)	Wellbore	BENSON FARMS 12N-23HZ AWB
Facility	SEC.24-T3N-R68W		

HOLE & CASING SECTIONS - Ref Wellbore: BENSON FARMS 12N-23HZ AWB Ref Wellpath: BENSON FARMS 12N-23HZ AWP									
String/Diameter	Start MD [ft]	End MD [ft]	Interval [ft]	Start TVD [ft]	End TVD [ft]	Start N/S [ft]	Start E/W [ft]	End N/S [ft]	End E/W [ft]
13.5in Open Hole	16.00	1254.00	1238.00	16.00	1253.97	0.00	0.00	0.11	-4.68
9.625in Casing Surface	16.00	1244.00	1228.00	16.00	1243.97	0.00	0.00	0.06	-4.62
8.75in Open Hole	1254.00	7564.00	6310.00	1253.97	7136.28	0.11	-4.68	79.74	254.26
7in Casing Intermediate	16.00	7554.00	7538.00	16.00	7135.41	0.00	0.00	79.70	264.23
6.125in Open Hole	7564.00	13080.00	5516.00	7136.28	7118.79	79.74	254.26	25.04	-5259.46

WELLPATH COMPOSITION - Ref Wellbore: BENSON FARMS 12N-23HZ AWB Ref Wellpath: BENSON FARMS 12N-23HZ AWP				
Start MD [ft]	End MD [ft]	Positional Uncertainty Model	Log Name/Comment	Wellbore
16.00	1151.00	Generic gyro - continuous (Standard)	MS GYRO SURVEYS <116-1151>	BENSON FARMS 12N-23HZ AWB
1151.00	7480.00	NaviTrak (IFR)	BHI NAVITRAK MWD+IFR 8 3/4" <1311-7480>	BENSON FARMS 12N-23HZ AWB
7480.00	13018.00	NaviTrak (IFR)	BHI NAVITRAK MWD+IFR 6 1/8" <7608-13018>	BENSON FARMS 12N-23HZ AWB
13018.00	13080.00	Blind Drilling (std)	Projection to bit	BENSON FARMS 12N-23HZ AWB

REFERENCE WELLPATH IDENTIFICATION				
Operator	KERR-MCGEE OIL & GAS ONSHORE LP	Slot	SLOT#26 BENSON FARMS 12N-23HZ (2075'FSL & 50'FWL, SEC.24)	
Area	COLORADO	Well	BENSON FARMS 12N-23HZ	
Field	WELD COUNTY (KERR MCGEE)	Wellbore	BENSON FARMS 12N-23HZ AWB	
Facility	SEC.24-T3N-R68W			

WELLPATH COMMENTS				
MD [ft]	Inclination [°]	Azimuth [°]	TVD [ft]	Comment
16.00	0.000	281.950	16.00	TIE ON
116.00	0.580	281.950	116.00	BEGIN GYRO SURVEYS
1151.00	0.710	321.370	1150.97	TIE ONTO GYRO SURVEYS
1311.00	0.320	297.210	1310.96	BEGIN BHI MWD+IFR SURVEYS
7554.00	84.675	270.135	7135.41	7" CASING POINT
13018.00	90.520	269.220	7119.36	LAST BHI MWD+IFR SURVEY
13080.00	90.520	269.220	7118.79	PROJECTION TO BIT