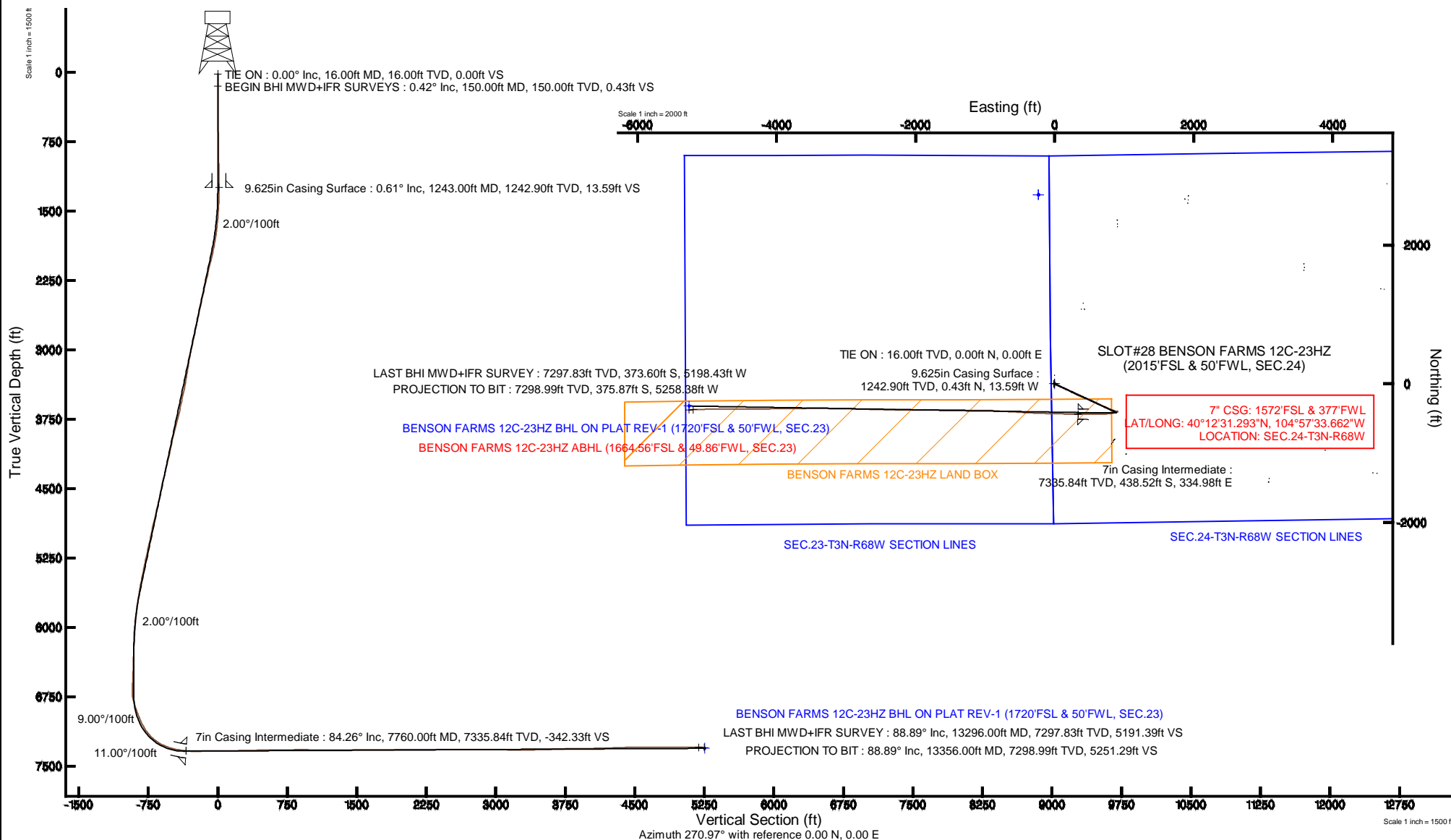


KERR-MCGEE OIL & GAS ONSHORE LP

Location: COLORADO Slot: SLOT#28 BENSON FARMS 12C-23HZ (2015 FSL & 50' FWL, SEC.24)
Field: WELD COUNTY (KERR MCGEE) Well: BENSON FARMS 12C-23HZ
Facility: SEC.24-T3N-R68W Wellbore: BENSON FARMS 12C-23HZ PWB

Plot reference wellpath is BENSON FARMS 12C-23HZ (REV-B.0) PWB

True vertical depths are referenced to XTREME 24 (16' RKB) (RKB)	Grid System: NAD83 / Lambert Colorado SP, Northern Zone (501), US feet
Measured depths are referenced to XTREME 24 (16' RKB) (RKB)	North Reference: True north
XTREME 24 (16' RKB) (RKB) to Mean Sea Level: 4973 feet	Scale: True distance
Mean Sea Level to Mud line (At Slot: SLOT#28 BENSON FARMS 12C-23HZ (2015 FSL & 50' FWL, SEC.24)): 0 feet	Depths are in feet
Coordinates are in feet referenced to Slot	Created by: robale01 on 11/Jul/2014



REFERENCE WELLPATH IDENTIFICATION			
Operator	KERR-MCGEE OIL & GAS ONSHORE LP	Slot	SLOT#28 BENSON FARMS 12C-23HZ (2015'FSL & 50'FWL, SEC.24)
Area	COLORADO	Well	BENSON FARMS 12C-23HZ
Field	WELD COUNTY (KERR MCGEE)	Wellbore	BENSON FARMS 12C-23HZ AWB
Facility	SEC.24-T3N-R68W		

REPORT SETUP INFORMATION			
Projection System	NAD83 / Lambert Colorado SP, Northern Zone (501), US feet	Software System	WellArchitect® 4.0.0
North Reference	True	User	Robiale01
Scale	0.999957	Report Generated	11/Jul/2014 at 09:37
Convergence at slot	n/a	Database/Source file	WellArchitectDB/BENSON_FARMS_12C-23HZ_AWB.xml

WELLPATH LOCATION						
	Local coordinates		Grid coordinates		Geographic coordinates	
	North[ft]	East[ft]	Easting[US ft]	Northing[US ft]	Latitude	Longitude
Slot Location	-1727.94	-3575.09	3150662.78	1319765.73	40°12'35.626"N	104°57'37.980"W
Facility Reference Pt			3154226.88	1321515.82	40°12'52.704"N	104°56'51.900"W
Field Reference Pt			3197771.84	1268891.29	40°04'09.600"N	104°47'36.000"W

WELLPATH DATUM			
Calculation method	Minimum curvature	XTREME 24 (16' RKB) (RKB) to Facility Vertical Datum	4973.00ft
Horizontal Reference Pt	Slot	XTREME 24 (16' RKB) (RKB) to Mean Sea Level	4973.00ft
Vertical Reference Pt	XTREME 24 (16' RKB) (RKB)	XTREME 24 (16' RKB) (RKB) to Mud Line at Slot (SLOT#28 BENSON FARMS 12C-23HZ (2015'FSL & 50'FWL, SEC.24))	4973.00ft
MD Reference Pt	XTREME 24 (16' RKB) (RKB)	Section Origin	N 0.00, E 0.00 ft
Field Vertical Reference	Mean Sea Level	Section Azimuth	265.91°

Actual Wellpath Report

BENSON FARMS 12C-23HZ AWP

Page 2 of 6

REFERENCE WELLPATH IDENTIFICATION

Operator	KERR-MCGEE OIL & GAS ONSHORE LP	Slot	SLOT#28 BENSON FARMS 12C-23HZ (2015'FSL & 50'FWL, SEC.24)
Area	COLORADO	Well	BENSON FARMS 12C-23HZ
Field	WELD COUNTY (KERR MCGEE)	Wellbore	BENSON FARMS 12C-23HZ AWB
Facility	SEC.24-T3N-R68W		

WELLPATH DATA (143 stations) † = interpolated/extrapolated station

MD [ft]	Inclination [°]	Azimuth [°]	TVD [ft]	Vert Sect [ft]	North [ft]	East [ft]	Latitude	Longitude	DLS [°/100ft]	Comments
0.00†	0.000	241.710	0.00	0.00	0.00	0.00	40°12'35.626"N	104°57'37.980"W	0.00	
16.00	0.000	241.710	16.00	0.00	0.00	0.00	40°12'35.626"N	104°57'37.980"W	0.00	TIE ON
150.00	0.420	241.710	150.00	0.45	-0.23	-0.43	40°12'35.624"N	104°57'37.986"W	0.31	BEGIN BHI MWD+IFR SURVEYS
240.00	0.440	250.830	240.00	1.08	-0.50	-1.05	40°12'35.621"N	104°57'37.994"W	0.08	
335.00	0.540	269.440	334.99	1.88	-0.63	-1.84	40°12'35.620"N	104°57'38.004"W	0.20	
430.00	0.460	268.130	429.99	2.71	-0.64	-2.67	40°12'35.620"N	104°57'38.014"W	0.09	
524.00	0.770	308.370	523.98	3.55	-0.26	-3.54	40°12'35.623"N	104°57'38.026"W	0.55	
618.00	0.740	295.300	617.98	4.55	0.39	-4.59	40°12'35.630"N	104°57'38.039"W	0.19	
712.00	0.930	280.850	711.97	5.81	0.79	-5.88	40°12'35.634"N	104°57'38.056"W	0.30	
807.00	0.960	290.770	806.95	7.28	1.22	-7.39	40°12'35.638"N	104°57'38.075"W	0.17	
901.00	0.640	288.130	900.94	8.48	1.66	-8.62	40°12'35.642"N	104°57'38.091"W	0.34	
995.00	1.030	277.680	994.93	9.79	1.94	-9.96	40°12'35.645"N	104°57'38.108"W	0.44	
1089.00	1.080	253.650	1088.92	11.49	1.80	-11.64	40°12'35.644"N	104°57'38.130"W	0.47	
1183.00	0.940	228.430	1182.90	12.96	1.04	-13.07	40°12'35.636"N	104°57'38.148"W	0.49	
1312.00	0.500	155.080	1311.90	13.60	-0.17	-13.63	40°12'35.624"N	104°57'38.156"W	0.72	
1406.00	2.970	107.440	1405.85	11.19	-1.28	-11.13	40°12'35.613"N	104°57'38.123"W	2.83	
1500.00	4.510	124.280	1499.65	6.03	-4.09	-5.75	40°12'35.586"N	104°57'38.054"W	2.00	
1595.00	5.620	120.870	1594.28	-0.71	-8.58	1.33	40°12'35.541"N	104°57'37.963"W	1.21	
1689.00	7.050	111.740	1687.70	-9.68	-13.08	10.64	40°12'35.497"N	104°57'37.843"W	1.86	
1783.00	9.080	109.710	1780.77	-21.66	-17.71	22.98	40°12'35.451"N	104°57'37.684"W	2.18	
1877.00	11.300	112.830	1873.28	-36.66	-23.79	38.45	40°12'35.391"N	104°57'37.484"W	2.43	
1971.00	14.250	114.280	1964.94	-55.05	-32.12	57.49	40°12'35.309"N	104°57'37.239"W	3.16	
2068.00	14.430	114.470	2058.92	-76.17	-42.04	79.37	40°12'35.211"N	104°57'36.957"W	0.19	
2159.00	14.440	112.240	2147.05	-96.30	-51.03	100.20	40°12'35.122"N	104°57'36.689"W	0.61	
2251.00	14.020	112.750	2236.22	-116.53	-59.68	121.09	40°12'35.036"N	104°57'36.419"W	0.48	
2343.00	13.610	113.680	2325.56	-136.05	-68.34	141.28	40°12'34.951"N	104°57'36.159"W	0.51	
2435.00	13.370	114.380	2415.03	-154.98	-77.08	160.88	40°12'34.864"N	104°57'35.906"W	0.32	
2527.00	13.850	116.630	2504.44	-173.79	-86.40	180.41	40°12'34.772"N	104°57'35.655"W	0.78	
2617.00	13.520	117.480	2591.89	-192.02	-96.08	199.38	40°12'34.676"N	104°57'35.410"W	0.43	
2708.00	12.920	118.770	2680.48	-209.63	-105.89	217.73	40°12'34.580"N	104°57'35.174"W	0.73	
2800.00	12.870	116.230	2770.16	-227.11	-115.37	235.94	40°12'34.486"N	104°57'34.939"W	0.62	
2892.00	13.310	115.570	2859.77	-245.16	-124.47	254.68	40°12'34.396"N	104°57'34.697"W	0.51	
2984.00	13.470	113.790	2949.26	-263.83	-133.36	274.04	40°12'34.308"N	104°57'34.448"W	0.48	
3076.00	12.420	113.620	3038.93	-282.06	-141.65	292.91	40°12'34.226"N	104°57'34.205"W	1.14	
3168.00	10.010	115.780	3129.16	-297.76	-149.09	309.18	40°12'34.153"N	104°57'33.995"W	2.66	
3259.00	10.200	119.480	3218.75	-311.33	-156.50	323.31	40°12'34.080"N	104°57'33.813"W	0.74	
3351.00	10.480	115.270	3309.26	-325.41	-164.08	337.97	40°12'34.005"N	104°57'33.624"W	0.88	
3443.00	11.440	113.090	3399.58	-340.82	-171.23	353.93	40°12'33.934"N	104°57'33.418"W	1.14	
3535.00	13.810	112.200	3489.35	-358.78	-178.95	372.49	40°12'33.858"N	104°57'33.179"W	2.58	
3627.00	12.900	115.170	3578.86	-377.59	-187.47	391.95	40°12'33.773"N	104°57'32.928"W	1.24	
3719.00	13.290	113.130	3668.47	-395.95	-195.99	410.97	40°12'33.689"N	104°57'32.683"W	0.66	
3811.00	15.190	110.400	3757.64	-416.33	-204.35	432.00	40°12'33.607"N	104°57'32.412"W	2.19	
3896.00	14.990	111.210	3839.71	-436.40	-212.21	452.68	40°12'33.529"N	104°57'32.145"W	0.34	
3981.00	14.700	111.490	3921.87	-456.07	-220.13	472.96	40°12'33.451"N	104°57'31.884"W	0.35	
4066.00	13.350	111.880	4004.34	-474.62	-227.74	492.11	40°12'33.375"N	104°57'31.637"W	1.59	

REFERENCE WELLPATH IDENTIFICATION

Operator	KERR-MCGEE OIL & GAS ONSHORE LP	Slot	SLOT#28 BENSON FARMS 12C-23HZ (2015'FSL & 50'FWL, SEC.24)
Area	COLORADO	Well	BENSON FARMS 12C-23HZ
Field	WELD COUNTY (KERR MCGEE)	Wellbore	BENSON FARMS 12C-23HZ AWB
Facility	SEC.24-T3N-R68W		

WELLPATH DATA (143 stations) † = interpolated/extrapolated station

MD [ft]	Inclination [°]	Azimuth [°]	TVD [ft]	Vert Sect [ft]	North [ft]	East [ft]	Latitude	Longitude	DLS [°/100ft]	Comments
4151.00	12.520	114.490	4087.18	-491.53	-235.22	509.60	40°12'33.302"N	104°57'31.412"W	1.19	
4236.00	13.770	110.830	4169.95	-508.80	-242.64	527.44	40°12'33.228"N	104°57'31.182"W	1.77	
4321.00	15.020	114.710	4252.28	-527.62	-250.84	546.90	40°12'33.147"N	104°57'30.931"W	1.86	
4406.00	15.130	117.280	4334.36	-546.75	-260.53	566.76	40°12'33.051"N	104°57'30.675"W	0.80	
4491.00	14.540	118.250	4416.53	-565.23	-270.66	586.02	40°12'32.951"N	104°57'30.427"W	0.75	
4576.00	13.340	118.290	4499.02	-582.53	-280.36	604.06	40°12'32.855"N	104°57'30.194"W	1.41	
4661.00	12.700	114.810	4581.84	-598.99	-288.93	621.17	40°12'32.771"N	104°57'29.974"W	1.19	
4746.00	13.670	116.270	4664.59	-615.84	-297.29	638.66	40°12'32.688"N	104°57'29.748"W	1.21	
4831.00	14.690	114.260	4747.00	-633.99	-306.17	657.49	40°12'32.600"N	104°57'29.506"W	1.33	
4916.00	14.260	112.880	4829.31	-652.81	-314.67	676.97	40°12'32.516"N	104°57'29.255"W	0.65	
5002.00	13.160	113.460	4912.85	-670.93	-322.68	695.71	40°12'32.437"N	104°57'29.013"W	1.29	
5087.00	12.460	114.280	4995.74	-687.58	-330.31	712.94	40°12'32.362"N	104°57'28.791"W	0.85	
5172.00	13.320	113.970	5078.60	-704.29	-338.05	730.25	40°12'32.285"N	104°57'28.568"W	1.02	
5257.00	14.140	113.690	5161.17	-722.11	-346.20	748.70	40°12'32.205"N	104°57'28.330"W	0.97	
5342.00	12.980	114.770	5243.80	-739.66	-354.37	766.88	40°12'32.124"N	104°57'28.096"W	1.40	
5428.00	12.100	114.570	5327.74	-756.03	-362.17	783.84	40°12'32.047"N	104°57'27.877"W	1.02	
5513.00	12.100	110.650	5410.86	-771.94	-369.02	800.28	40°12'31.979"N	104°57'27.665"W	0.97	
5598.00	12.230	112.130	5493.95	-788.10	-375.55	816.96	40°12'31.915"N	104°57'27.450"W	0.40	
5683.00	10.720	111.340	5577.25	-803.32	-381.82	832.66	40°12'31.853"N	104°57'27.248"W	1.79	
5769.00	9.340	109.530	5661.93	-816.94	-387.06	846.69	40°12'31.801"N	104°57'27.067"W	1.65	
5854.00	7.700	106.090	5745.99	-828.61	-390.95	858.66	40°12'31.763"N	104°57'26.913"W	2.02	
5939.00	6.980	111.180	5830.29	-838.62	-394.39	868.95	40°12'31.729"N	104°57'26.780"W	1.14	
6024.00	5.770	109.400	5914.77	-847.21	-397.68	877.80	40°12'31.696"N	104°57'26.666"W	1.44	
6109.00	4.570	106.130	5999.42	-854.31	-400.04	885.08	40°12'31.673"N	104°57'26.572"W	1.45	
6194.00	3.350	100.400	6084.22	-859.89	-401.42	890.78	40°12'31.659"N	104°57'26.499"W	1.51	
6279.00	2.800	95.710	6169.09	-864.34	-402.08	895.29	40°12'31.653"N	104°57'26.441"W	0.71	
6364.00	2.420	96.640	6254.00	-868.15	-402.49	899.13	40°12'31.648"N	104°57'26.391"W	0.45	
6450.00	2.040	86.910	6339.94	-871.46	-402.62	902.47	40°12'31.647"N	104°57'26.348"W	0.62	
6534.00	1.980	73.650	6423.89	-874.38	-402.13	905.35	40°12'31.652"N	104°57'26.311"W	0.56	
6619.00	2.220	49.270	6508.83	-877.13	-400.64	908.01	40°12'31.667"N	104°57'26.277"W	1.08	
6704.00	3.270	62.930	6593.73	-880.69	-398.47	911.41	40°12'31.688"N	104°57'26.233"W	1.45	
6790.00	1.620	85.730	6679.66	-884.16	-397.26	914.81	40°12'31.700"N	104°57'26.189"W	2.19	
6875.00	9.050	247.440	6764.35	-879.01	-399.74	909.82	40°12'31.676"N	104°57'26.253"W	12.47	
6959.00	20.710	253.200	6845.40	-858.18	-406.59	889.43	40°12'31.608"N	104°57'26.516"W	13.98	
7044.00	21.920	251.960	6924.58	-828.12	-415.85	859.96	40°12'31.516"N	104°57'26.896"W	1.52	
7129.00	23.410	255.580	7003.02	-796.10	-424.97	828.51	40°12'31.426"N	104°57'27.301"W	2.40	
7214.00	30.630	264.570	7078.72	-757.78	-431.24	790.54	40°12'31.364"N	104°57'27.791"W	9.74	
7300.00	39.340	267.020	7149.12	-708.53	-434.73	741.41	40°12'31.330"N	104°57'28.424"W	10.26	
7385.00	49.780	267.100	7209.60	-648.98	-437.78	681.93	40°12'31.300"N	104°57'29.191"W	12.28	
7470.00	60.430	268.630	7258.16	-579.41	-440.32	612.36	40°12'31.275"N	104°57'30.087"W	12.62	
7555.00	70.730	271.130	7293.26	-502.32	-440.41	535.08	40°12'31.274"N	104°57'31.083"W	12.41	
7641.00	78.020	270.540	7316.40	-419.85	-439.21	452.32	40°12'31.286"N	104°57'32.150"W	8.50	
7714.00	80.760	270.150	7329.84	-348.32	-438.78	380.58	40°12'31.290"N	104°57'33.075"W	3.79	
7760.00†	84.258	270.509	7335.84	-302.86	-438.52	334.98	40°12'31.293"N	104°57'33.662"W	7.64	7" CASING POINT
7833.00	89.810	271.070	7339.61	-230.25	-437.51	262.11	40°12'31.303"N	104°57'34.602"W	7.64	

REFERENCE WELLPATH IDENTIFICATION			
Operator	KERR-MCGEE OIL & GAS ONSHORE LP	Slot	SLOT#28 BENSON FARMS 12C-23HZ (2015'FSL & 50'FWL, SEC.24)
Area	COLORADO	Well	BENSON FARMS 12C-23HZ
Field	WELD COUNTY (KERR MCGEE)	Wellbore	BENSON FARMS 12C-23HZ AWB
Facility	SEC.24-T3N-R68W		

WELLPATH DATA (143 stations)										
MD [ft]	Inclination [°]	Azimuth [°]	TVD [ft]	Vert Sect [ft]	North [ft]	East [ft]	Latitude	Longitude	DLS [°/100ft]	Comments
7918.00	90.860	271.640	7339.12	-145.64	-435.50	177.14	40°12'31.322"N	104°57'35.697"W	1.41	
8003.00	90.790	272.060	7337.89	-61.10	-432.76	92.19	40°12'31.349"N	104°57'36.792"W	0.50	
8088.00	90.240	271.150	7337.13	23.47	-430.38	7.23	40°12'31.373"N	104°57'37.887"W	1.25	
8173.00	90.760	271.080	7336.39	108.12	-428.72	-77.75	40°12'31.389"N	104°57'38.982"W	0.62	
8258.00	91.010	271.760	7335.08	192.72	-426.62	-162.71	40°12'31.410"N	104°57'40.077"W	0.85	
8428.00	91.350	272.660	7331.57	361.65	-420.06	-332.55	40°12'31.475"N	104°57'42.266"W	0.57	
8513.00	91.750	273.280	7329.28	445.98	-415.66	-417.40	40°12'31.518"N	104°57'43.360"W	0.87	
8598.00	90.700	273.150	7327.46	530.27	-410.90	-502.25	40°12'31.565"N	104°57'44.453"W	1.24	
8683.00	90.610	273.450	7326.49	614.56	-406.00	-587.10	40°12'31.614"N	104°57'45.547"W	0.37	
8854.00	90.610	273.370	7324.67	784.08	-395.83	-757.79	40°12'31.714"N	104°57'47.747"W	0.05	
8939.00	90.670	273.840	7323.72	868.31	-390.49	-842.62	40°12'31.767"N	104°57'48.840"W	0.56	
9024.00	89.750	271.620	7323.40	952.71	-386.44	-927.51	40°12'31.807"N	104°57'49.935"W	2.83	
9109.00	88.850	271.060	7324.44	1037.32	-384.45	-1012.48	40°12'31.827"N	104°57'51.030"W	1.25	
9194.00	89.440	270.720	7325.71	1121.99	-383.13	-1097.46	40°12'31.840"N	104°57'52.125"W	0.80	
9280.00	89.960	270.740	7326.16	1207.68	-382.04	-1183.45	40°12'31.850"N	104°57'53.234"W	0.61	
9365.00	89.870	270.470	7326.29	1292.40	-381.14	-1268.45	40°12'31.859"N	104°57'54.329"W	0.33	
9450.00	90.030	270.780	7326.36	1377.11	-380.21	-1353.44	40°12'31.868"N	104°57'55.425"W	0.41	
9621.00	89.880	270.580	7326.50	1547.52	-378.18	-1524.43	40°12'31.888"N	104°57'57.628"W	0.15	
9791.00	90.520	270.500	7325.90	1716.96	-376.58	-1694.42	40°12'31.904"N	104°57'59.819"W	0.38	
9876.00	90.460	270.310	7325.18	1801.70	-375.98	-1779.42	40°12'31.910"N	104°58'00.915"W	0.23	
10046.00	90.710	270.240	7323.44	1971.19	-375.16	-1949.41	40°12'31.918"N	104°58'03.106"W	0.15	
10216.00	90.370	269.940	7321.84	2140.73	-374.90	-2119.40	40°12'31.920"N	104°58'05.297"W	0.27	
10387.00	90.620	270.410	7320.36	2311.25	-374.37	-2290.39	40°12'31.925"N	104°58'07.501"W	0.31	
10472.00	89.820	270.920	7320.03	2395.96	-373.39	-2375.38	40°12'31.935"N	104°58'08.596"W	1.12	
10642.00	89.570	271.060	7320.94	2565.29	-370.45	-2545.36	40°12'31.964"N	104°58'10.787"W	0.17	
10812.00	90.000	271.480	7321.58	2734.55	-366.68	-2715.31	40°12'32.001"N	104°58'12.978"W	0.35	
10982.00	89.570	271.550	7322.22	2903.73	-362.19	-2885.25	40°12'32.045"N	104°58'15.168"W	0.26	
11067.00	89.720	271.860	7322.74	2988.30	-359.66	-2970.21	40°12'32.070"N	104°58'16.263"W	0.41	
11237.00	89.350	270.940	7324.12	3157.51	-355.51	-3140.15	40°12'32.111"N	104°58'18.453"W	0.58	
11322.00	89.350	270.460	7325.09	3242.21	-354.47	-3225.14	40°12'32.121"N	104°58'19.549"W	0.56	
11408.00	89.540	270.110	7325.92	3327.95	-354.04	-3311.14	40°12'32.125"N	104°58'20.657"W	0.46	
11493.00	91.560	270.180	7325.10	3412.71	-353.83	-3396.13	40°12'32.127"N	104°58'21.753"W	2.38	
11578.00	91.780	269.790	7322.63	3497.46	-353.85	-3481.09	40°12'32.127"N	104°58'22.848"W	0.53	
11663.00	91.690	269.610	7320.05	3582.24	-354.29	-3566.05	40°12'32.122"N	104°58'23.943"W	0.24	
11748.00	92.000	269.760	7317.32	3667.01	-354.76	-3651.00	40°12'32.118"N	104°58'25.038"W	0.41	
11833.00	91.660	269.500	7314.60	3751.78	-355.31	-3735.96	40°12'32.112"N	104°58'26.133"W	0.50	
11918.00	91.130	269.190	7312.53	3836.61	-356.28	-3820.93	40°12'32.102"N	104°58'27.228"W	0.72	
12002.00	91.040	269.350	7310.94	3920.45	-357.35	-3904.91	40°12'32.092"N	104°58'28.310"W	0.22	
12087.00	90.550	269.140	7309.76	4005.29	-358.47	-3989.89	40°12'32.080"N	104°58'29.406"W	0.63	
12172.00	90.610	268.310	7308.90	4090.19	-360.36	-4074.86	40°12'32.062"N	104°58'30.501"W	0.98	
12257.00	91.500	268.050	7307.34	4175.11	-363.06	-4159.81	40°12'32.035"N	104°58'31.596"W	1.09	
12342.00	92.280	268.380	7304.53	4259.99	-365.71	-4244.72	40°12'32.009"N	104°58'32.690"W	1.00	
12428.00	92.090	270.100	7301.25	4345.78	-366.85	-4330.64	40°12'31.997"N	104°58'33.798"W	2.01	
12512.00	91.140	270.820	7298.89	4429.48	-366.17	-4414.61	40°12'32.004"N	104°58'34.880"W	1.42	
12598.00	90.030	270.440	7298.01	4515.18	-365.23	-4500.60	40°12'32.013"N	104°58'35.988"W	1.36	

REFERENCE WELLPATH IDENTIFICATION			
Operator	KERR-MCGEE OIL & GAS ONSHORE LP	Slot	SLOT#28 BENSON FARMS 12C-23HZ (2015'FSL & 50'FWL, SEC.24)
Area	COLORADO	Well	BENSON FARMS 12C-23HZ
Field	WELD COUNTY (KERR MCGEE)	Wellbore	BENSON FARMS 12C-23HZ AWB
Facility	SEC.24-T3N-R68W		

WELLPATH DATA (143 stations)										
MD [ft]	Inclination [°]	Azimuth [°]	TVD [ft]	Vert Sect [ft]	North [ft]	East [ft]	Latitude	Longitude	DLS [°/100ft]	Comments
12683.00	89.350	269.620	7298.47	4599.96	-365.18	-4585.59	40°12'32.013"N	104°58'37.084"W	1.25	
12768.00	90.300	269.900	7298.73	4684.77	-365.54	-4670.59	40°12'32.009"N	104°58'38.179"W	1.17	
12853.00	90.580	270.020	7298.08	4769.55	-365.60	-4755.59	40°12'32.009"N	104°58'39.275"W	0.36	
12938.00	91.040	269.940	7296.87	4854.33	-365.63	-4840.58	40°12'32.008"N	104°58'40.370"W	0.55	
13023.00	90.610	269.440	7295.65	4939.14	-366.09	-4925.57	40°12'32.004"N	104°58'41.466"W	0.78	
13192.00	89.130	268.020	7296.03	5107.92	-369.83	-5094.52	40°12'31.966"N	104°58'43.643"W	1.21	
13296.00	88.890	267.830	7297.83	5211.84	-373.60	-5198.43	40°12'31.929"N	104°58'44.983"W	0.29	LAST BHI MWD+IFR SURVEY
13356.00	88.890	267.830	7298.99	5271.80	-375.87	-5258.38	40°12'31.906"N	104°58'45.755"W	0.00	PROJECTION TO BIT

HOLE & CASING SECTIONS - Ref Wellbore: BENSON FARMS 12C-23HZ AWB Ref Wellpath: BENSON FARMS 12C-23HZ AWP									
String/Diameter	Start MD [ft]	End MD [ft]	Interval [ft]	Start TVD [ft]	End TVD [ft]	Start N/S [ft]	Start E/W [ft]	End N/S [ft]	End E/W [ft]
13.5in Open Hole	16.00	1253.00	1237.00	16.00	1252.90	0.00	0.00	0.33	-13.63
9.625in Casing Surface	16.00	1243.00	1227.00	16.00	1242.90	0.00	0.00	0.43	-13.59
8.75in Open Hole	1253.00	7772.00	6519.00	1252.90	7336.94	0.33	-13.63	-438.40	323.03
7in Casing Intermediate	16.00	7760.00	7744.00	16.00	7335.84	0.00	0.00	-438.52	334.98
6.125in Open Hole	7772.00	13356.00	5584.00	7336.94	7298.99	-438.40	323.03	-375.87	-5258.38

WELLPATH COMPOSITION - Ref Wellbore: BENSON FARMS 12C-23HZ AWB Ref Wellpath: BENSON FARMS 12C-23HZ AWP				
Start MD [ft]	End MD [ft]	Positional Uncertainty Model	Log Name/Comment	Wellbore
16.00	1183.00	NaviTrak (IFR)	BHI NAVITRAK MWD+IFR 13 1/2" <150-1183>	BENSON FARMS 12C-23HZ AWB
1183.00	7714.00	NaviTrak (IFR)	BHI NAVITRAK MWD+IFR 8 3/4" <1312-7714>	BENSON FARMS 12C-23HZ AWB
7714.00	13296.00	NaviTrak (IFR)	BHI NAVITRAK MWD+IFR 6 1/8" <7833-13296>	BENSON FARMS 12C-23HZ AWB
13296.00	13356.00	Blind Drilling (std)	Projection to bit	BENSON FARMS 12C-23HZ AWB

REFERENCE WELLPATH IDENTIFICATION				
Operator	KERR-MCGEE OIL & GAS ONSHORE LP	Slot	SLOT#28 BENSON FARMS 12C-23HZ (2015'FSL & 50'FWL, SEC.24)	
Area	COLORADO	Well	BENSON FARMS 12C-23HZ	
Field	WELD COUNTY (KERR MCGEE)	Wellbore	BENSON FARMS 12C-23HZ AWB	
Facility	SEC.24-T3N-R68W			

WELLPATH COMMENTS				
MD [ft]	Inclination [°]	Azimuth [°]	TVD [ft]	Comment
16.00	0.000	241.710	16.00	TIE ON
150.00	0.420	241.710	150.00	BEGIN BHI MWD+IFR SURVEYS
7760.00	84.258	270.509	7335.84	7" CASING POINT
13296.00	88.890	267.830	7297.83	LAST BHI MWD+IFR SURVEY
13356.00	88.890	267.830	7298.99	PROJECTION TO BIT