

COLUMBINE LOGGING

Scale: 5" / 100'
Measured Depth Log

Well Name Anschutz State 4-62-2-3228 CH2 VERT

Location SWNW S02-T4N-R62W

State Colorado

County Weld

Country USA

Rig Number Nabors M22

API Number 05-123-38964

AFE # 18750D

Region DJ Basin

Field Wildcat

Spud Date 5/28/2014

Drilling Completed 6/6/2014

Surface Coordinates SWNW S02-T4N-R62W
1644' FNL 250' FWL

Bottom Hole Coordinates Projected:
SWNE Sec 01-T4N-R62W
2495' FNL 2470' FEL

Ground Elevation 4544'

K.B. Elevation 4566'

Logged Interval 4700' **To** 5700'

Total Depth 14275'

Formation Shannon

Type of Drilling Fluid LSND

Operator

Company Bill Barrett Corporation

Address 1099 18th Street, Suite 2300
Denver, CO 80202

Geologist

Name Scott Hampton

Company Bill Barrett Corporation

Address 1099 18th Street, Suite 2300
Denver, CO 80202

Other

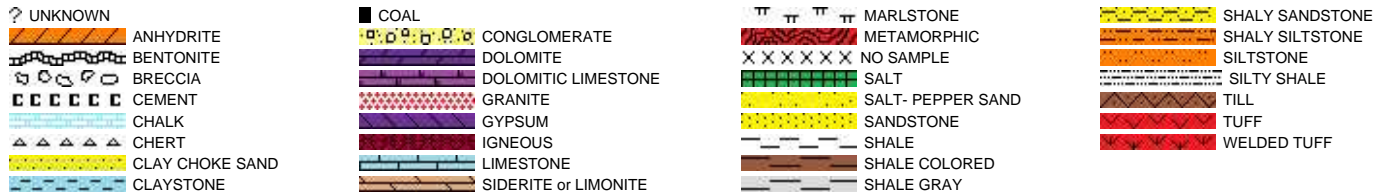
Charles Trodick

Senior Wellsite Geologist

Mark Raimo

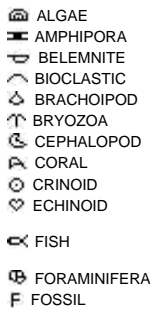
Wellsite Geologist

Rock Types



Accessories

Fossils



GASTROPOD

INOCERAMUS

OOLITE

OSTRACOD

PELECYPOD

PELLET

PISOLITE

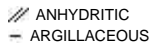
PLANT REMAINS

PLANT SPORES

SCAPHOPOD

STROMATOPOROID

Minerals



ARGILLITE GRAIN

BENTONITE

BITUMENOUS SUBSTANCE

BRECCIA FRAGMENTS

CALCAREOUS

CARBONACEOUS FLAKES

CHTDK

CHTLT

COAL - THIN BEDS

DOLOMITIC

FELDSPAR

FERRUGINOUS PELLET

FERRUGINOUS

GLAUCONITE

GYPSIFEROUS

HEAVY MINERAL

KAOLIN

MARCASITE

MARLSTONE

MICACEOUS

MINERAL CRYSTALS

NODULES

PHOSPHATE PELLETS

PYRITE

SALT CAST

SANDY

SIDERITE

SILICEOUS

SILTY

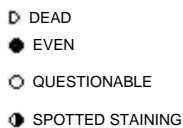
TUFFACEOUS

Stringer



Other Symbols

Oil Show



Porosity



ORGANIC

P PINPOINT

V VUGGY

Engineering



FAULT

FORMATION TOP

GAS SHOW

OIL SHOW

MN DEPTH MN DEPTH

MN DEPTH MN DEPTH (RIGHT)

NORMAL FAULT

OVERTURNED STRATA

REVERSE FAULT

CASING

SIDEWALL CORE (LEFT)

SIDEWALL CORE (RIGHT)

SLIDE

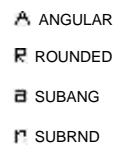
SURVEY

DST DRILL STEM TEST

WIRELINE TESTED - LEFT

WIRELINE TESTED - RT

Rounding



Textures



E EARTHY

FX FINELYXLN

GS GRAINSTONE

L LITHOGRAPHIC

MX MICROXLN

MS MUDSTONE

PS PACKSTONE

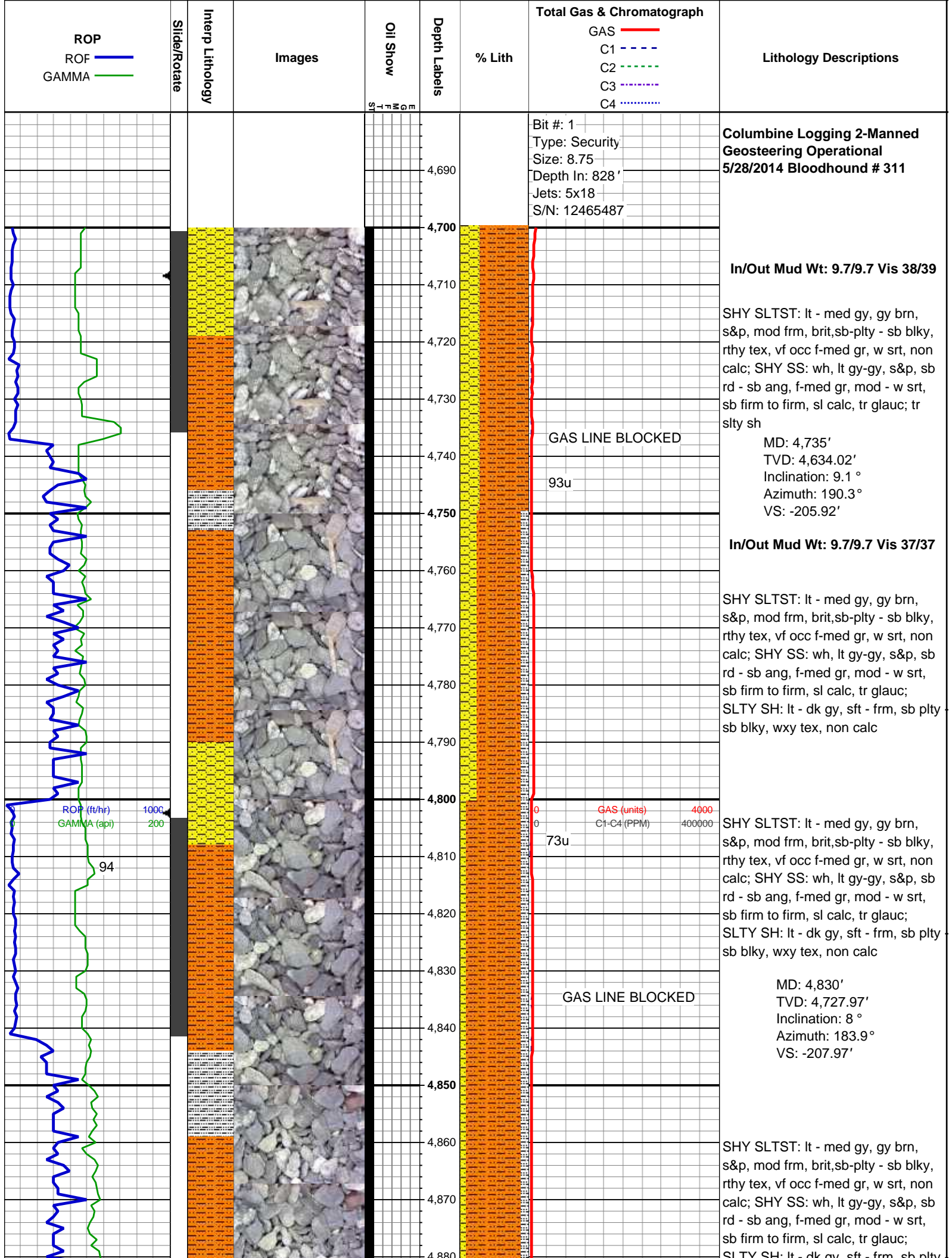
WS WACKESTONE

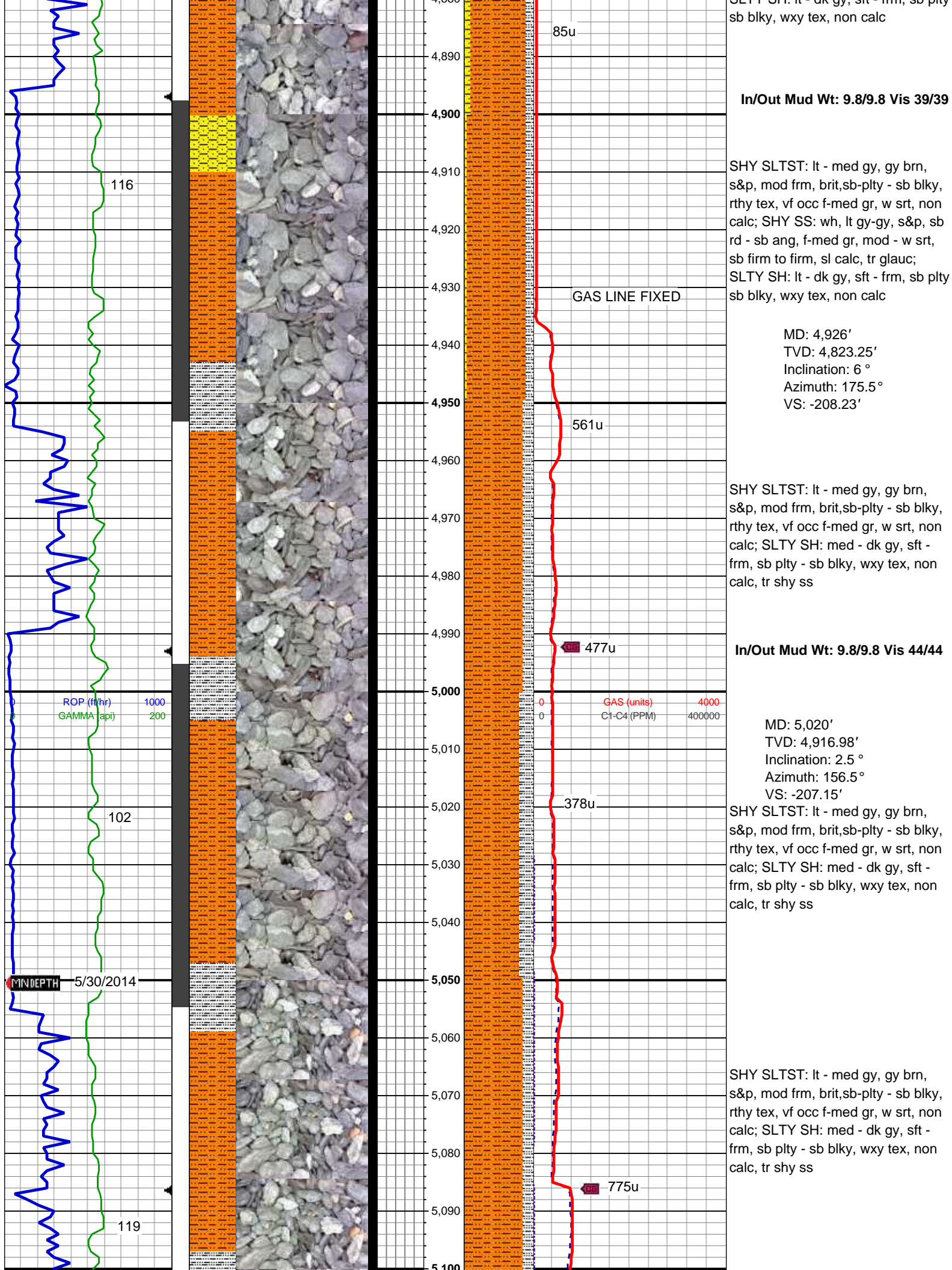
Sorting

M MODERATE

P POOR

W WELL





In/Out Mud Wt: 9.8/9.8 Vis 39/39

SHY SLTST: lt - med gy, gy brn, s&p, mod frm, brit,sb-plty - sb blkly, rthy tex, vf occ f-med gr, w srt, non calc; SHY SS: wh, lt gy-gy, s&p, sb rd - sb ang, f-med gr, mod - w srt, sb firm to firm, sl calc, tr glauc; SLTY SH: lt - dk gy, sft - frm, sb plty - sb blkly, wxy tex, non calc

MD: 4,926'
TVD: 4,823.25'
Inclination: 6 °
Azimuth: 175.5°
VS: -208.23'

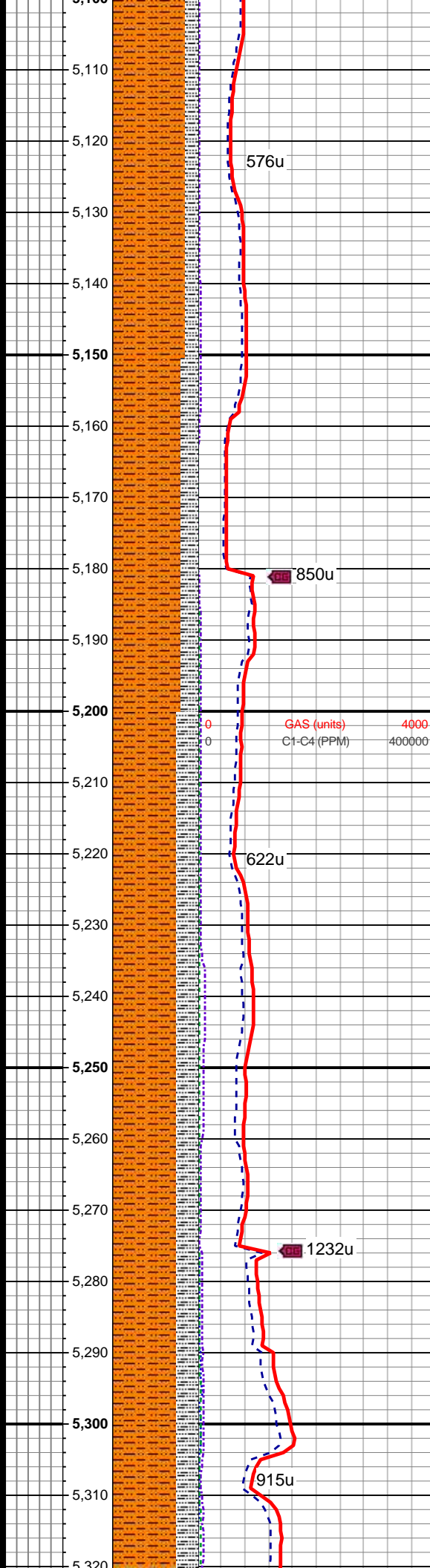
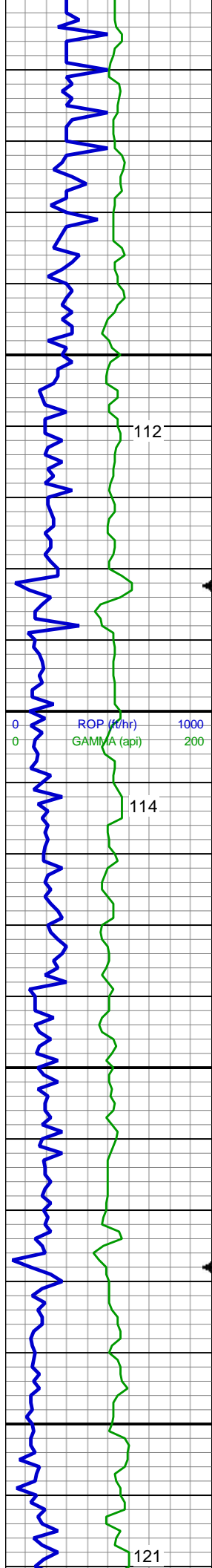
SHY SLTST: lt - med gy, gy brn, s&p, mod frm, brit,sb-plty - sb blkly, rthy tex, vf occ f-med gr, w srt, non calc; SLTY SH: med - dk gy, sft - frm, sb plty - sb blkly, wxy tex, non calc, tr shy ss

In/Out Mud Wt: 9.8/9.8 Vis 44/44

MD: 5,020'
TVD: 4,916.98'
Inclination: 2.5 °
Azimuth: 156.5°
VS: -207.15'

SHY SLTST: lt - med gy, gy brn, s&p, mod frm, brit,sb-plty - sb blkly, rthy tex, vf occ f-med gr, w srt, non calc; SLTY SH: med - dk gy, sft - frm, sb plty - sb blkly, wxy tex, non calc, tr shy ss

SHY SLTST: lt - med gy, gy brn, s&p, mod frm, brit,sb-plty - sb blkly, rthy tex, vf occ f-med gr, w srt, non calc; SLTY SH: med - dk gy, sft - frm, sb plty - sb blkly, wxy tex, non calc, tr shy ss



MD: 5,116'
TVD: 5,012.95'
Inclination: 0.1 °
Azimuth: 116.8 °
VS: -206.28'

SHY SLTST: lt - med gy, gy brn, s&p, mod frm, brit,sb-plty - sb blk, rthy tex, vf occ f-med gr, w srt, non calc; SLTY SH: med - dk gy, sft - frm, sb plty - sb blk, wxy tex, non calc, tr shy ss

SHY SLTST: lt - med gy, gy brn, s&p, mod frm, brit,sb-plty - sb blk, rthy tex, vf occ f-med gr, w srt, non calc; SLTY SH: med - dk gy, sft - frm, sb plty - sb blk, wxy tex, non calc, tr shy ss

MD: 5,211'
TVD: 5,107.95'
Inclination: 0.1 °
Azimuth: 48.8 °
VS: -206.14'

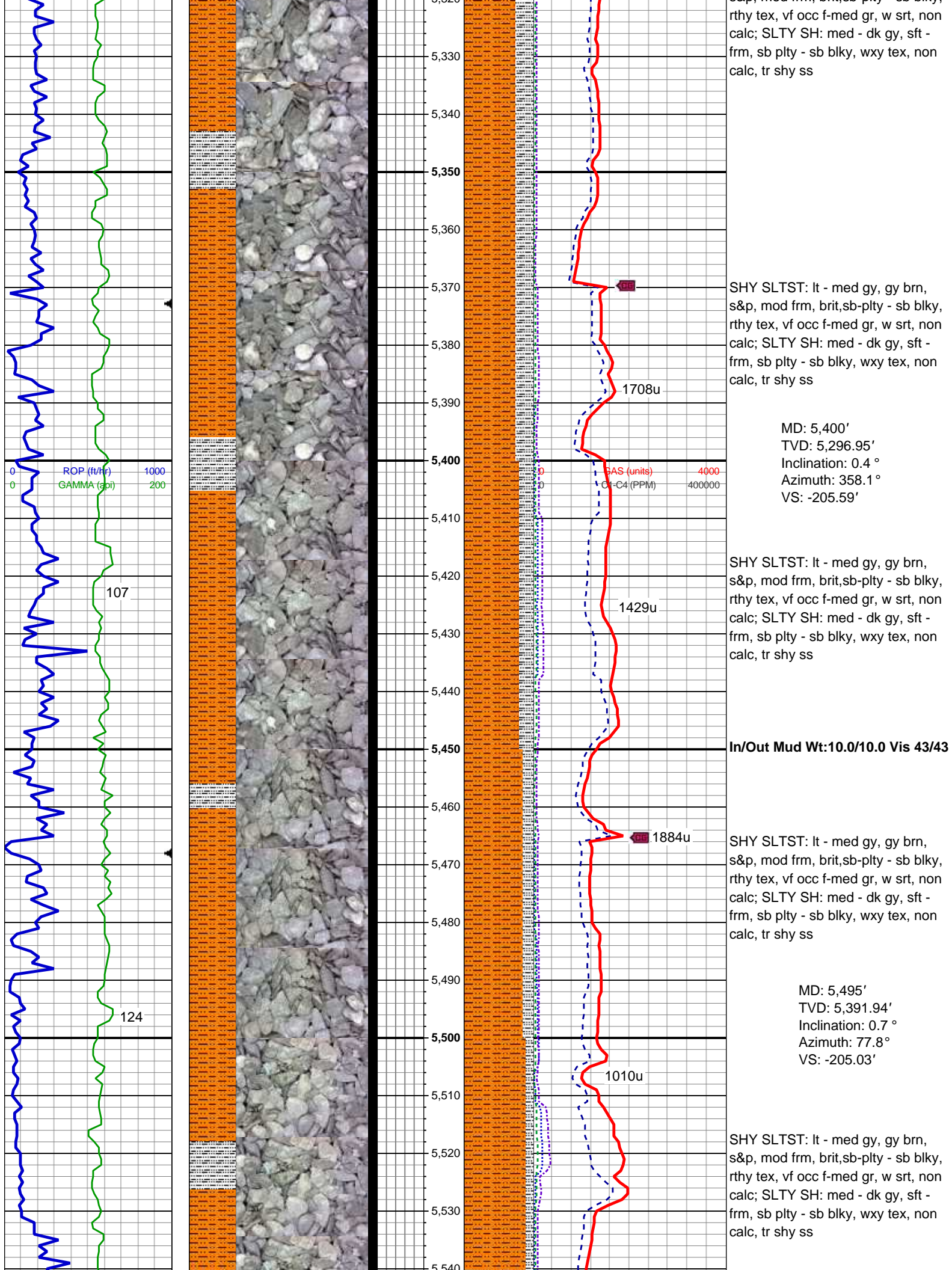
SHY SLTST: lt - med gy, gy brn, s&p, mod frm, brit,sb-plty - sb blk, rthy tex, vf occ f-med gr, w srt, non calc; SLTY SH: med - dk gy, sft - frm, sb plty - sb blk, wxy tex, non calc, tr shy ss

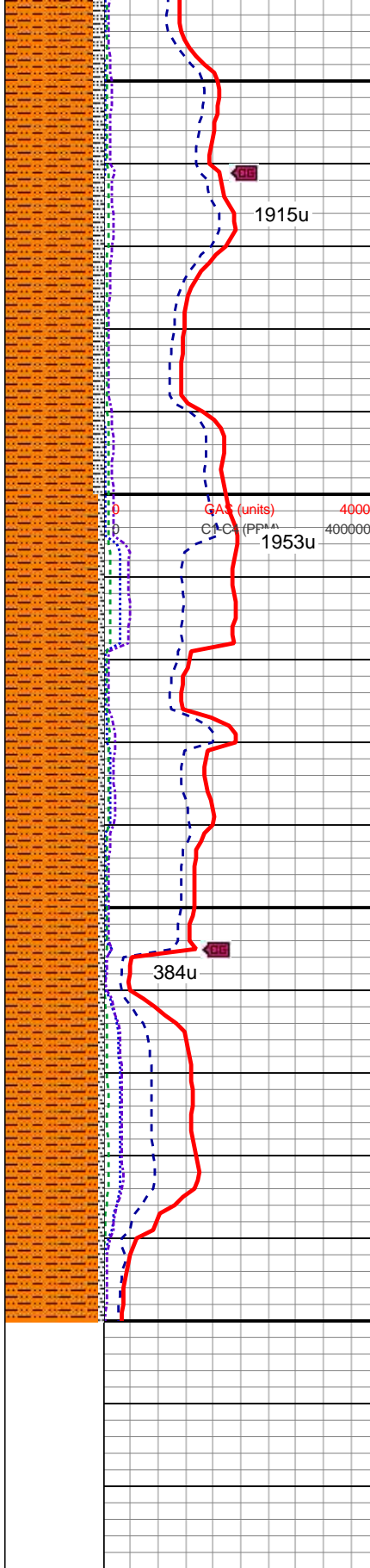
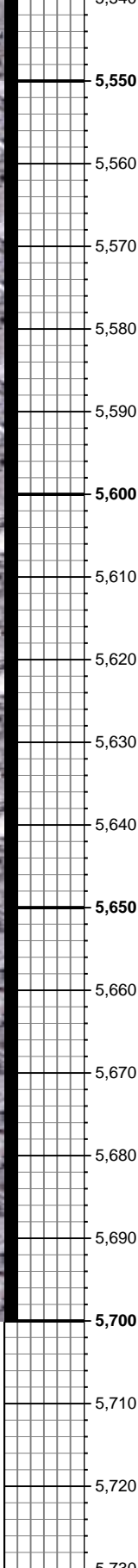
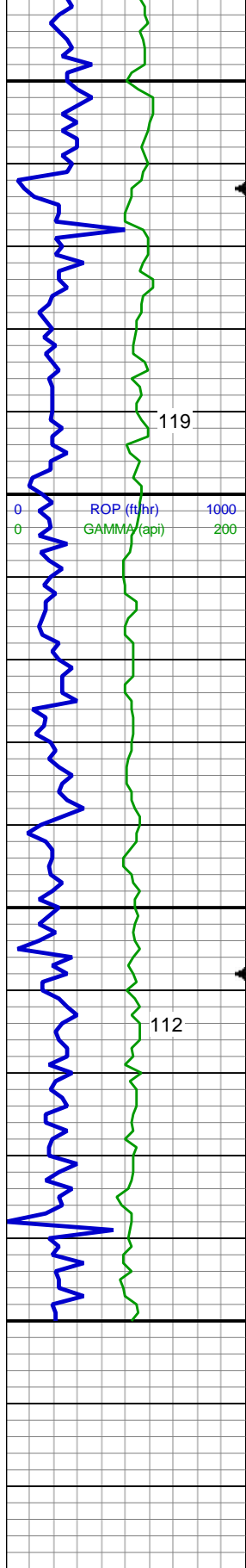
SHY SLTST: lt - med gy, gy brn, s&p, mod frm, brit,sb-plty - sb blk, rthy tex, vf occ f-med gr, w srt, non calc; SLTY SH: med - dk gy, sft - frm, sb plty - sb blk, wxy tex, non calc, tr shy ss

In/Out Mud Wt:10.0/10.0 Vis 45/45

MD: 5,306'
TVD: 5,202.95'
Inclination: 0.3 °
Azimuth: 98.5 °
VS: -205.83'

SHY SLTST: lt - med gy, gy brn, s&p, mod frm, brit,sb-plty - sb blk,





SHY SLTST: lt - med gy, gy brn, s&p, mod frm, brit,sb-plty - sb blkly, rthy tex, vf occ f-med gr, w srt, non calc; SLTY SH: med - dk gy, sft - frm, sb plty - sb blkly, wxy tex, non calc, tr shy ss

MD: 5,590'
TVD: 5,486.94'
Inclination: 0.8 °
Azimuth: 101.9 °
VS: -203.81'

In/Out Mud Wt:10.0/10.0 Vis 42/42

SHY SLTST: lt - med gy, gy brn, s&p, mod frm, brit,sb-plty - sb blkly, rthy tex, vf occ f-med gr, w srt, non calc; SLTY SH: med - dk gy, sft - frm, sb plty - sb blkly, wxy tex, non calc, tr shy ss

SHY SLTST: lt - med gy, gy brn, s&p, mod frm, brit,sb-plty - sb blkly, rthy tex, vf occ f-med gr, w srt, non calc; SLTY SH: med - dk gy, sft - frm, sb plty - sb blkly, wxy tex, non calc, tr shy ss

KOP REACHED @ 5700' MD
TOOH TO CHANGE MWD
TOOLS: 6:44 MST ON 5/30/2014
VERTICAL TD: 5700' MD
DATA CONTINUED ON
HORIZONTAL LOG

THANK YOU FOR USING
COLUMBINE LOGGING INC.