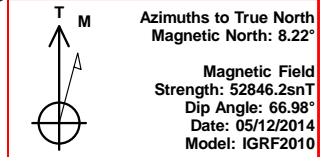
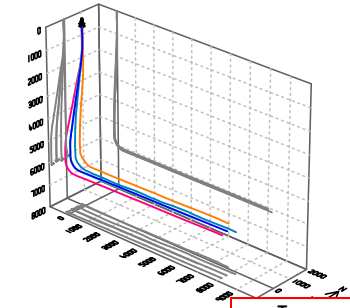




Bill Barrett Corp.  
Project: Weld Co., CO  
Site: Sec.2-T4N-R62W  
Well: Anschutz State 4-62-2-3228BH2  
Wellbore: Wellbore #1  
Design: Design #3  
Lat: 40° 20' 40.769 N  
Long: 104° 18' 6.160 W  
Pad GL: 4544.00  
KB: WELL @ 4566.00usft (Original Well Elev)

# Archer



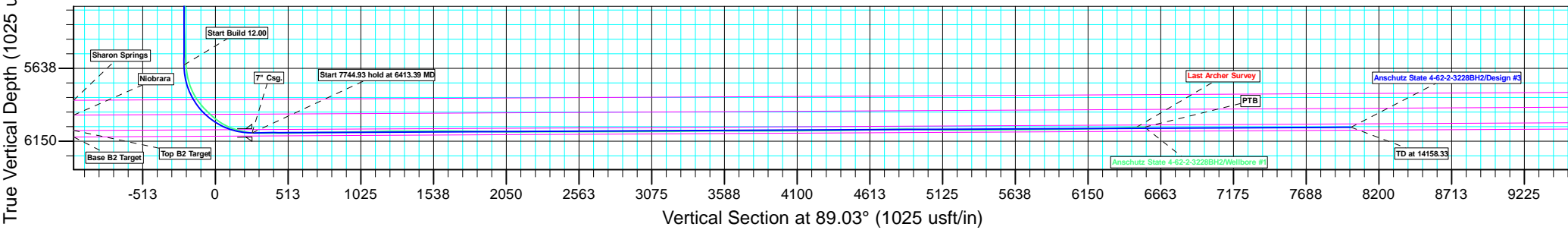
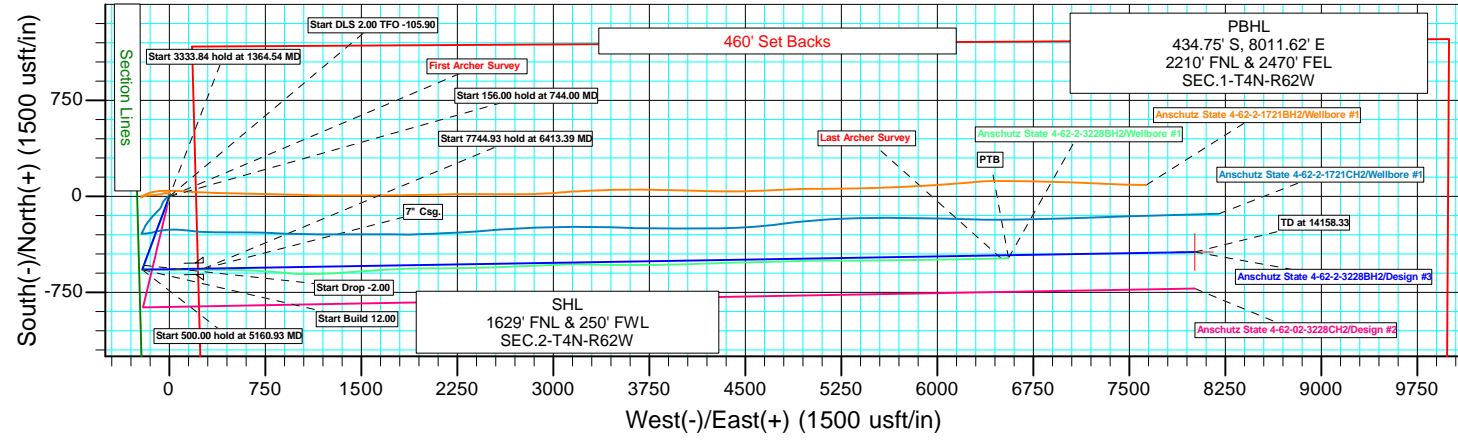
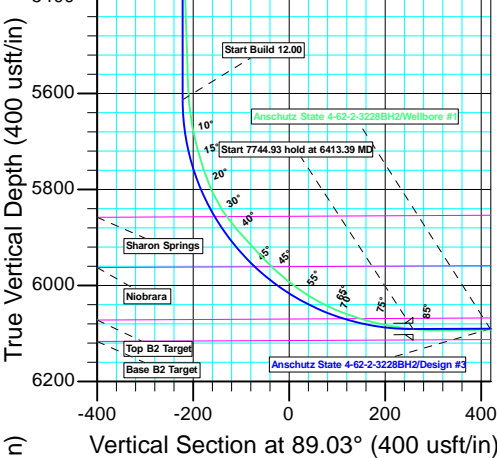
SECTION DETAILS									
MD	Inc	Azi	TVD	+N/-S	+E/-W	Dleg	TFace	VSec	Annotation
744.00	0.15	305.33	743.99	-1.29	0.88	0.00	0.00	0.85	Start 156.00 hold at 744.00 MD
900.00	0.15	305.33	899.99	-1.05	0.54	0.00	0.00	0.52	Start DLS 2.00 TFO -105.90
1364.54	9.25	200.32	1362.52	-35.79	-12.95	2.00	-105.90	-13.55	Start 3333.84 hold at 1364.54 MD
4698.38	9.25	200.32	4653.00	-538.39	-199.03	0.00	0.00	-208.12	Start Drop -2.00
5160.93	0.00	0.00	5113.54	-573.33	-211.97	2.00	180.00	-221.65	Start 500.00 hold at 5160.93 MD
5660.93	0.00	0.00	5613.54	-573.33	-211.97	0.00	0.00	-221.65	Start Build 12.00
6413.39	90.30	89.03	6091.00	-565.24	267.89	12.00	89.03	258.29	Start 7744.93 hold at 6413.39 MD
14158.33	90.30	89.03	6051.00	-434.75	8011.62	0.00	0.00	8003.11	TD at 14158.33

WELL DETAILS: Anschutz State 4-62-2-3228BH2						
+N/-S	+E/-W	Northing	Ground Level: Easting	4544.00 Latitude	Longitude	Slot
0.00	0.00	1370656.326	3333998.170	40° 20' 40.769 N	104° 18' 6.160 W	

PROJECT DETAILS: Weld Co., CO	
Geodetic System:	US State Plane 1983
Datum:	North American Datum 1983
Ellipsoid:	GRS 1980
Zone:	Colorado Northern Zone
System Datum:	Mean Sea Level

CASING DETAILS		
TVD	MD	Name
6091.00	6413.39	7" Csg.

WELLBORE TARGET DETAILS (LAT/LONG)						
Name	TVD	+N/-S	+E/-W	Latitude	Longitude	Shape Point
Anschutz State4-62-2-3228BH2 tgt	6051.00	-434.75	8011.62	40° 20' 36.460 N	104° 16' 22.688 W	





**Bill Barrett Corporation**

## **Bill Barrett Corp.**

**Weld Co., CO**

**Sec.2-T4N-R62W**

**Anschutz State 4-62-2-3228BH2**

**Wellbore #1**

**Survey: Survey #2**

## **Standard Survey Report**

**06 June, 2014**

# **Archer**

<b>Company:</b>	Bill Barrett Corp.	<b>Local Co-ordinate Reference:</b>	Well Anschutz State 4-62-2-3228BH2
<b>Project:</b>	Weld Co., CO	<b>TVD Reference:</b>	WELL @ 4566.00usft (Original Well Elev)
<b>Site:</b>	Sec.2-T4N-R62W	<b>MD Reference:</b>	WELL @ 4566.00usft (Original Well Elev)
<b>Well:</b>	Anschutz State 4-62-2-3228BH2	<b>North Reference:</b>	True
<b>Wellbore:</b>	Wellbore #1	<b>Survey Calculation Method:</b>	Minimum Curvature
<b>Design:</b>	Wellbore #1	<b>Database:</b>	EDMDBBW

<b>Project</b>	Weld Co., CO		
<b>Map System:</b>	US State Plane 1983	<b>System Datum:</b>	Mean Sea Level
<b>Geo Datum:</b>	North American Datum 1983		
<b>Map Zone:</b>	Colorado Northern Zone		

Site		Sec.2-T4N-R62W			
Site Position:		Northing:	1,370,686.920 usft	Latitude:	40° 20' 41.071 N
From:	Lat/Long	Easting:	3,333,996.920 usft	Longitude:	104° 18' 6.170 W
Position Uncertainty:	0.00 usft	Slot Radius:	13-3/16 "	Grid Convergence:	0.77 °

Well		Anschutz State 4-62-2-3228BH2				
Well Position	+N/-S	0.00 usft	Northing:	1,370,656.326 usft	Latitude:	40° 20' 40.769 N
	+E/-W	0.00 usft	Easting:	3,333,998.170 usft	Longitude:	104° 18' 6.160 W
Position Uncertainty		0.00 usft	Wellhead Elevation:	usft	Ground Level:	4,544.00 usft

<b>Wellbore</b>	Wellbore #1				
<b>Magnetics</b>	<b>Model Name</b>	<b>Sample Date</b>	<b>Declination (°)</b>	<b>Dip Angle (°)</b>	<b>Field Strength (nT)</b>
	IGRF2010	2014/05/12	8.22	66.98	52,846

Design	Wellbore #1			
Audit Notes:				
Version:	1.0	Phase:	ACTUAL	Tie On Depth: 0.00
Vertical Section:	Depth From (TVD) (usft)	+N/-S (usft)	+E/-W (usft)	Direction (°)
	0.00	0.00	0.00	89.03

<b>Survey Program</b>	<b>Date</b>	2014/06/06			
<b>From (usft)</b>	<b>To (usft)</b>	<b>Survey (Wellbore)</b>	<b>Tool Name</b>	<b>Description</b>	
100.00	744.00	Survey #1 (Wellbore #1)	GYRO	GyroCompass Mode	
864.00	12,683.00	Survey #2 (Wellbore #1)	MWD	MWD - Standard	

<b>Survey</b>										
<b>Measured Depth (usft)</b>	<b>Inclination (°)</b>	<b>Azimuth (°)</b>	<b>Vertical Depth (usft)</b>	<b>+N/-S (usft)</b>	<b>+E/-W (usft)</b>	<b>Vertical Section (usft)</b>	<b>Dogleg Rate (°/100usft)</b>	<b>Build Rate (°/100usft)</b>	<b>Turn Rate (°/100usft)</b>	
744.00	0.15	305.33	743.99	-1.29	0.88	0.85	0.00	0.00	0.00	
<b>First Archer Survey</b>										
864.00	0.50	37.80	863.99	-0.78	1.07	1.06	0.44	0.29	77.06	
956.00	0.40	155.60	955.98	-0.76	1.45	1.43	0.84	-0.11	128.04	
1,047.00	2.50	192.50	1,046.95	-2.98	1.15	1.10	2.41	2.31	40.55	
1,139.00	4.90	191.40	1,138.75	-8.80	-0.06	-0.21	2.61	2.61	-1.20	
1,231.00	6.50	189.80	1,230.29	-17.78	-1.73	-2.03	1.75	1.74	-1.74	
1,322.00	9.90	197.20	1,320.35	-30.33	-4.92	-5.43	3.90	3.74	8.13	
1,415.00	11.50	203.70	1,411.74	-46.46	-11.01	-11.79	2.15	1.72	6.99	
1,507.00	11.50	203.40	1,501.89	-63.27	-18.34	-19.40	0.07	0.00	-0.33	
1,600.00	10.90	201.10	1,593.12	-79.98	-25.18	-26.53	0.80	-0.65	-2.47	
1,691.00	10.70	200.40	1,682.51	-95.93	-31.23	-32.84	0.26	-0.22	-0.77	

<b>Company:</b>	Bill Barrett Corp.	<b>Local Co-ordinate Reference:</b>	Well Anschutz State 4-62-2-3228BH2
<b>Project:</b>	Weld Co., CO	<b>TVD Reference:</b>	WELL @ 4566.00usft (Original Well Elev)
<b>Site:</b>	Sec.2-T4N-R62W	<b>MD Reference:</b>	WELL @ 4566.00usft (Original Well Elev)
<b>Well:</b>	Anschutz State 4-62-2-3228BH2	<b>North Reference:</b>	True
<b>Wellbore:</b>	Wellbore #1	<b>Survey Calculation Method:</b>	Minimum Curvature
<b>Design:</b>	Wellbore #1	<b>Database:</b>	EDMDBBW

Survey									
Measured Depth (usft)	Inclination (°)	Azimuth (°)	Vertical Depth (usft)	+N/-S (usft)	+E/-W (usft)	Vertical Section (usft)	Dogleg Rate (°/100usft)	Build Rate (°/100usft)	Turn Rate (°/100usft)
1,783.00	10.20	198.40	1,772.98	-111.66	-36.77	-38.66	0.67	-0.54	-2.17
1,875.00	9.90	206.00	1,863.57	-126.50	-42.81	-44.95	1.48	-0.33	8.26
1,970.00	10.00	205.30	1,957.14	-141.30	-49.92	-52.30	0.17	0.11	-0.74
2,064.00	9.60	204.00	2,049.77	-155.84	-56.59	-59.22	0.49	-0.43	-1.38
2,160.00	8.80	202.70	2,144.54	-169.93	-62.68	-65.55	0.86	-0.83	-1.35
2,255.00	8.40	203.10	2,238.47	-183.01	-68.21	-71.30	0.43	-0.42	0.42
2,350.00	7.80	201.90	2,332.52	-195.38	-73.34	-76.63	0.66	-0.63	-1.26
2,445.00	10.10	200.30	2,426.36	-209.17	-78.63	-82.16	2.43	2.42	-1.68
2,540.00	9.80	197.50	2,519.93	-224.70	-83.95	-87.74	0.60	-0.32	-2.95
2,635.00	9.20	198.90	2,613.63	-239.59	-88.84	-92.89	0.68	-0.63	1.47
2,730.00	9.00	199.60	2,707.43	-253.78	-93.80	-98.08	0.24	-0.21	0.74
2,826.00	7.80	199.80	2,802.40	-266.98	-98.52	-103.03	1.25	-1.25	0.21
2,921.00	9.80	201.10	2,896.28	-280.59	-103.62	-108.35	2.12	2.11	1.37
3,016.00	8.90	204.60	2,990.01	-294.82	-109.59	-114.56	1.12	-0.95	3.68
3,111.00	8.90	194.10	3,083.88	-308.63	-114.44	-119.64	1.71	0.00	-11.05
3,206.00	7.80	194.40	3,177.87	-322.00	-117.83	-123.26	1.16	-1.16	0.32
3,300.00	8.40	199.70	3,270.93	-334.64	-121.73	-127.38	1.02	0.64	5.64
3,396.00	10.30	199.30	3,365.65	-349.34	-126.93	-132.83	1.98	1.98	-0.42
3,491.00	10.90	199.20	3,459.03	-365.84	-132.69	-138.87	0.63	0.63	-0.11
3,586.00	11.30	201.20	3,552.25	-383.00	-139.01	-145.48	0.58	0.42	2.11
3,681.00	10.70	201.20	3,645.51	-399.90	-145.57	-152.32	0.63	-0.63	0.00
3,775.00	10.00	203.20	3,737.98	-415.54	-151.94	-158.95	0.84	-0.74	2.13
3,870.00	8.90	204.30	3,831.69	-429.82	-158.21	-165.47	1.17	-1.16	1.16
3,965.00	8.60	198.90	3,925.58	-443.24	-163.54	-171.02	0.92	-0.32	-5.68
4,060.00	9.10	200.40	4,019.45	-457.00	-168.46	-176.17	0.58	0.53	1.58
4,155.00	8.70	198.40	4,113.31	-470.86	-173.34	-181.29	0.53	-0.42	-2.11
4,250.00	8.30	200.20	4,207.26	-484.11	-177.98	-186.15	0.51	-0.42	1.89
4,345.00	7.30	198.40	4,301.38	-496.27	-182.25	-190.63	1.08	-1.05	-1.89
4,440.00	6.70	199.00	4,395.67	-507.24	-185.96	-194.52	0.64	-0.63	0.63
4,535.00	6.20	198.10	4,490.07	-517.36	-189.36	-198.09	0.54	-0.53	-0.95
4,630.00	5.80	197.70	4,584.55	-526.80	-192.41	-201.30	0.42	-0.42	-0.42
4,724.00	5.60	193.90	4,678.09	-535.78	-194.96	-204.00	0.45	-0.21	-4.04
4,818.00	4.80	192.70	4,771.70	-544.07	-196.92	-206.11	0.86	-0.85	-1.28
4,914.00	4.50	190.70	4,867.38	-551.69	-198.51	-207.82	0.36	-0.31	-2.08
5,008.00	4.20	188.20	4,961.11	-558.72	-199.68	-209.11	0.38	-0.32	-2.66
5,104.00	4.50	207.20	5,056.84	-565.55	-201.91	-211.45	1.53	0.31	19.79
5,199.00	2.40	223.70	5,151.67	-570.30	-204.98	-214.61	2.42	-2.21	17.37
5,294.00	2.00	247.70	5,246.60	-572.37	-207.89	-217.55	1.05	-0.42	25.26
5,388.00	1.50	53.70	5,340.58	-572.26	-208.42	-218.08	3.70	-0.53	176.60
5,483.00	2.30	61.30	5,435.53	-570.61	-205.74	-215.37	0.88	0.84	8.00
5,578.00	1.90	62.00	5,530.47	-568.96	-202.68	-212.28	0.42	-0.42	0.74
5,620.00	2.10	60.80	5,572.44	-568.25	-201.39	-210.99	0.49	0.48	-2.86
5,667.00	4.40	76.30	5,619.36	-567.41	-198.89	-208.47	5.19	4.89	32.98
5,715.00	10.50	90.10	5,666.94	-566.98	-192.72	-202.29	13.15	12.71	28.75
5,762.00	14.90	92.30	5,712.78	-567.23	-182.40	-191.97	9.42	9.36	4.68
5,809.00	18.60	93.20	5,757.77	-567.89	-168.87	-178.46	7.89	7.87	1.91
5,856.00	23.50	92.70	5,801.63	-568.75	-152.02	-161.62	10.43	10.43	-1.06
5,904.00	32.50	93.40	5,843.96	-569.97	-129.54	-139.17	18.76	18.75	1.46
5,952.00	41.50	93.40	5,882.26	-571.68	-100.73	-110.39	18.75	18.75	0.00
5,999.00	43.30	92.80	5,916.96	-573.39	-69.09	-78.78	3.93	3.83	-1.28
6,046.00	43.50	91.70	5,951.11	-574.66	-36.82	-46.54	1.66	0.43	-2.34
6,093.00	50.60	89.90	5,983.12	-575.11	-2.45	-12.18	15.36	15.11	-3.83
6,141.00	55.50	89.40	6,011.96	-574.87	35.90	26.16	10.24	10.21	-1.04
6,188.00	62.20	89.50	6,036.26	-574.48	76.10	66.36	14.26	14.26	0.21

<b>Company:</b>	Bill Barrett Corp.	<b>Local Co-ordinate Reference:</b>	Well Anschutz State 4-62-2-3228BH2
<b>Project:</b>	Weld Co., CO	<b>TVD Reference:</b>	WELL @ 4566.00usft (Original Well Elev)
<b>Site:</b>	Sec.2-T4N-R62W	<b>MD Reference:</b>	WELL @ 4566.00usft (Original Well Elev)
<b>Well:</b>	Anschutz State 4-62-2-3228BH2	<b>North Reference:</b>	True
<b>Wellbore:</b>	Wellbore #1	<b>Survey Calculation Method:</b>	Minimum Curvature
<b>Design:</b>	Wellbore #1	<b>Database:</b>	EDMDBBW

Survey									
Measured Depth (usft)	Inclination (°)	Azimuth (°)	Vertical Depth (usft)	+N/-S (usft)	+E/-W (usft)	Vertical Section (usft)	Dogleg Rate (°/100usft)	Build Rate (°/100usft)	Turn Rate (°/100usft)
6,236.00	69.20	89.60	6,056.00	-574.14	119.82	110.08	14.58	14.58	0.21
6,283.00	73.00	89.40	6,071.22	-573.75	164.27	154.54	8.10	8.09	-0.43
6,331.00	79.70	89.90	6,082.54	-573.47	210.89	201.15	13.99	13.96	1.04
6,363.00	81.20	89.60	6,087.85	-573.33	242.45	232.71	4.78	4.69	-0.94
6,447.00	90.80	90.20	6,093.71	-573.19	326.14	316.39	11.45	11.43	0.71
6,539.00	91.10	90.80	6,092.18	-573.99	418.13	408.35	0.73	0.33	0.65
6,629.00	89.10	89.40	6,092.02	-574.15	508.12	498.33	2.71	-2.22	-1.56
6,720.00	92.10	93.70	6,091.07	-576.61	599.05	589.20	5.76	3.30	4.73
6,811.00	90.70	92.30	6,088.85	-581.37	689.89	679.95	2.18	-1.54	-1.54
6,902.00	90.60	94.40	6,087.81	-586.68	780.73	770.68	2.31	-0.11	2.31
6,994.00	90.60	95.80	6,086.85	-594.86	872.36	862.16	1.52	0.00	1.52
7,084.00	91.00	94.10	6,085.59	-602.63	962.01	951.67	1.94	0.44	-1.89
7,176.00	91.40	90.30	6,083.67	-606.16	1,053.90	1,043.49	4.15	0.43	-4.13
7,268.00	91.80	89.00	6,081.10	-605.60	1,145.86	1,135.45	1.48	0.43	-1.41
7,359.00	90.60	87.90	6,079.19	-603.14	1,236.81	1,226.42	1.79	-1.32	-1.21
7,451.00	89.80	86.90	6,078.87	-598.96	1,328.71	1,318.38	1.39	-0.87	-1.09
7,543.00	89.80	85.70	6,079.19	-593.03	1,420.52	1,410.27	1.30	0.00	-1.30
7,634.00	89.90	84.40	6,079.43	-585.17	1,511.17	1,501.05	1.43	0.11	-1.43
7,727.00	90.30	86.60	6,079.27	-577.88	1,603.88	1,593.87	2.40	0.43	2.37
7,819.00	89.70	87.00	6,079.27	-572.74	1,695.74	1,685.80	0.78	-0.65	0.43
7,911.00	90.30	86.60	6,079.27	-567.61	1,787.59	1,777.73	0.78	0.65	-0.43
8,003.00	88.70	88.80	6,080.07	-563.91	1,879.51	1,869.69	2.96	-1.74	2.39
8,094.00	88.00	89.60	6,082.69	-562.64	1,970.46	1,960.65	1.17	-0.77	0.88
8,186.00	90.00	90.10	6,084.30	-562.40	2,062.44	2,052.62	2.24	2.17	0.54
8,278.00	90.40	89.70	6,083.98	-562.24	2,154.44	2,144.61	0.61	0.43	-0.43
8,369.00	90.20	88.60	6,083.50	-560.89	2,245.43	2,235.61	1.23	-0.22	-1.21
8,442.00	90.30	88.40	6,083.18	-558.98	2,318.40	2,308.60	0.31	0.14	-0.27
8,533.00	90.40	88.60	6,082.63	-556.60	2,409.37	2,399.60	0.25	0.11	0.22
8,625.00	90.20	88.50	6,082.14	-554.27	2,501.34	2,491.59	0.24	-0.22	-0.11
8,715.00	90.30	88.50	6,081.75	-551.92	2,591.30	2,581.59	0.11	0.11	0.00
8,806.00	90.30	88.50	6,081.27	-549.53	2,682.27	2,672.58	0.00	0.00	0.00
8,897.00	89.40	87.10	6,081.51	-546.04	2,773.20	2,763.56	1.83	-0.99	-1.54
8,988.00	89.00	87.20	6,082.78	-541.52	2,864.08	2,854.50	0.45	-0.44	0.11
9,080.00	90.50	87.30	6,083.18	-537.10	2,955.97	2,946.45	1.63	1.63	0.11
9,170.00	90.80	86.90	6,082.16	-532.55	3,045.85	3,036.40	0.56	0.33	-0.44
9,262.00	90.50	89.60	6,081.12	-529.74	3,137.79	3,128.37	2.95	-0.33	2.93
9,354.00	90.90	91.50	6,080.00	-530.62	3,229.78	3,220.33	2.11	0.43	2.07
9,445.00	90.90	91.40	6,078.57	-532.93	3,320.74	3,311.24	0.11	0.00	-0.11
9,537.00	90.10	90.70	6,077.76	-534.61	3,412.72	3,403.18	1.16	-0.87	-0.76
9,629.00	90.50	90.90	6,077.28	-535.90	3,504.71	3,495.13	0.49	0.43	0.22
9,720.00	89.80	90.10	6,077.04	-536.69	3,595.70	3,586.10	1.17	-0.77	-0.88
9,813.00	89.80	89.50	6,077.37	-536.37	3,688.70	3,679.09	0.65	0.00	-0.65
9,905.00	90.40	89.60	6,077.21	-535.64	3,780.69	3,771.09	0.66	0.65	0.11
9,997.00	90.20	88.70	6,076.73	-534.28	3,872.68	3,863.08	1.00	-0.22	-0.98
10,089.00	90.00	88.10	6,076.57	-531.71	3,964.65	3,955.08	0.69	-0.22	-0.65
10,180.00	90.30	88.30	6,076.33	-528.85	4,055.60	4,046.07	0.40	0.33	0.22
10,272.00	90.40	88.10	6,075.77	-525.96	4,147.55	4,138.06	0.24	0.11	-0.22
10,364.00	90.30	88.40	6,075.20	-523.15	4,239.51	4,230.04	0.34	-0.11	0.33
10,455.00	90.40	88.30	6,074.65	-520.53	4,330.47	4,321.04	0.16	0.11	-0.11
10,546.00	90.60	88.40	6,073.85	-517.91	4,421.43	4,412.03	0.25	0.22	0.11
10,638.00	91.90	89.10	6,071.85	-515.91	4,513.38	4,504.00	1.60	1.41	0.76
10,730.00	91.30	88.30	6,069.28	-513.82	4,605.32	4,595.96	1.09	-0.65	-0.87
10,821.00	91.30	87.90	6,067.21	-510.80	4,696.25	4,686.93	0.44	0.00	-0.44
10,913.00	91.30	88.50	6,065.13	-507.91	4,788.18	4,778.89	0.65	0.00	0.65

<b>Company:</b>	Bill Barrett Corp.	<b>Local Co-ordinate Reference:</b>	Well Anschutz State 4-62-2-3228BH2
<b>Project:</b>	Weld Co., CO	<b>TVD Reference:</b>	WELL @ 4566.00usft (Original Well Elev)
<b>Site:</b>	Sec.2-T4N-R62W	<b>MD Reference:</b>	WELL @ 4566.00usft (Original Well Elev)
<b>Well:</b>	Anschutz State 4-62-2-3228BH2	<b>North Reference:</b>	True
<b>Wellbore:</b>	Wellbore #1	<b>Survey Calculation Method:</b>	Minimum Curvature
<b>Design:</b>	Wellbore #1	<b>Database:</b>	EDMDBBW

Survey										
Measured Depth (usft)	Inclination (°)	Azimuth (°)	Vertical Depth (usft)	+N/-S (usft)	+E/-W (usft)	Vertical Section (usft)	Dogleg Rate (°/100usft)	Build Rate (°/100usft)	Turn Rate (°/100usft)	
11,005.00	89.00	88.50	6,064.88	-505.51	4,880.14	4,870.88	2.50	-2.50	0.00	
11,097.00	88.60	88.60	6,066.81	-503.18	4,972.09	4,962.86	0.45	-0.43	0.11	
11,190.00	89.20	89.50	6,068.60	-501.64	5,065.06	5,055.84	1.16	0.65	0.97	
11,281.00	88.70	89.60	6,070.26	-500.92	5,156.04	5,146.82	0.56	-0.55	0.11	
11,373.00	90.30	91.00	6,071.07	-501.40	5,248.03	5,238.79	2.31	1.74	1.52	
11,464.00	90.40	90.80	6,070.51	-502.83	5,339.02	5,329.74	0.25	0.11	-0.22	
11,556.00	90.50	88.80	6,069.79	-502.51	5,431.01	5,421.72	2.18	0.11	-2.17	
11,647.00	89.70	89.60	6,069.63	-501.24	5,522.00	5,512.72	1.24	-0.88	0.88	
11,739.00	90.20	88.60	6,069.71	-499.80	5,613.99	5,604.72	1.22	0.54	-1.09	
11,831.00	89.60	88.20	6,069.87	-497.23	5,705.95	5,696.71	0.78	-0.65	-0.43	
11,924.00	91.90	90.30	6,068.65	-496.01	5,798.92	5,789.69	3.35	2.47	2.26	
12,016.00	91.60	90.00	6,065.84	-496.25	5,890.88	5,881.63	0.46	-0.33	-0.33	
12,108.00	90.50	88.70	6,064.16	-495.21	5,982.85	5,973.61	1.85	-1.20	-1.41	
12,199.00	89.50	89.20	6,064.16	-493.54	6,073.84	6,064.61	1.23	-1.10	0.55	
12,291.00	91.60	89.00	6,063.27	-492.09	6,165.82	6,156.60	2.29	2.28	-0.22	
12,383.00	91.70	89.00	6,060.63	-490.49	6,257.76	6,248.56	0.11	0.11	0.00	
12,474.00	92.20	88.60	6,057.53	-488.58	6,348.69	6,339.51	0.70	0.55	-0.44	
12,566.00	91.80	88.00	6,054.32	-485.86	6,440.59	6,431.45	0.78	-0.43	-0.65	
<b>Last Archer Survey</b>										
12,625.00	91.80	88.10	6,052.47	-483.85	6,499.53	6,490.41	0.17	0.00	0.17	
<b>PTB - Anschutz State4-62-2-3228BH2 tgt</b>										
12,683.00	91.80	88.10	6,050.64	-481.93	6,557.47	6,548.37	0.00	0.00	0.00	

Survey Annotations					
Measured Depth (usft)	Vertical Depth (usft)	Local Coordinates			
		+N/-S (usft)	+E/-W (usft)	Comment	
864.00	863.99	-0.78	1.07	First Archer Survey	
12,625.00	6,052.47	-483.85	6,499.53	Last Archer Survey	
12,683.00	6,050.64	-481.93	6,557.47	PTB	

Checked By: \_\_\_\_\_ Approved By: \_\_\_\_\_ Date: \_\_\_\_\_