



Scale: 5" / 100'
Measured Depth Log

Well Name Anshutz State 4-62-2-1721 CH2 Horz

Location SWNW Sec 2 T4N R62W

State Colorado

Country USA

API Number 05-123-38963

Region DJ Basin

Spud Date 5/3/2014

Surface Coordinates SWNW Sec 02-T4N-R62W
1614' FNL 250' FWL

Bottom Hole Coordinates Projected:
SWNW Sec 02-T4N-R62W
1925' FNL 2280' FEL

Ground Elevation 4544'

Logged Interval 4700' To 14375'

Formation Niobrara C Chalk

Type of Drilling Fluid LSND

County Weld

Rig Number Nabor M22

AFE # 18748D

Field Wildcat

Drilling Completed 5/11/2014

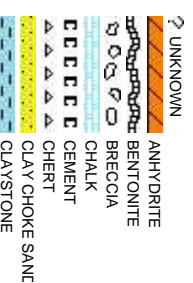
K.B. Elevation 4566'

Total Depth 14375'

Company Bill Barrett Corp
Address 1099 18th Street
Denver, CO 802

Name Scott Hampton
Company Bill Barrett Corp
Address 1099 18th Street
Denver, CO 802

Charles Trodick
Mark Raimo



Slide/Rotate

Columbine Logging 2-Manned
Geosteering Operational 5/4/2014
Bloodhound # 311

In/Out Mud Wt: 10.35/10.15 Vis 40/37 In/Out Mud Wt: 10.15/10.15 Vis 36/37

ROP
ROF
GAMMA

Log continues from
Anshutz 4-62-2-1721 CH2

Total Gas & Chromatograph

GAS
C1
C2
C3
C4

Bit Data
Bit #: 2
Type: MMD55M
Size: 8.75
Depth In: 5,680'
Jets: 5x16
S/N: 124012353

Depth Labels

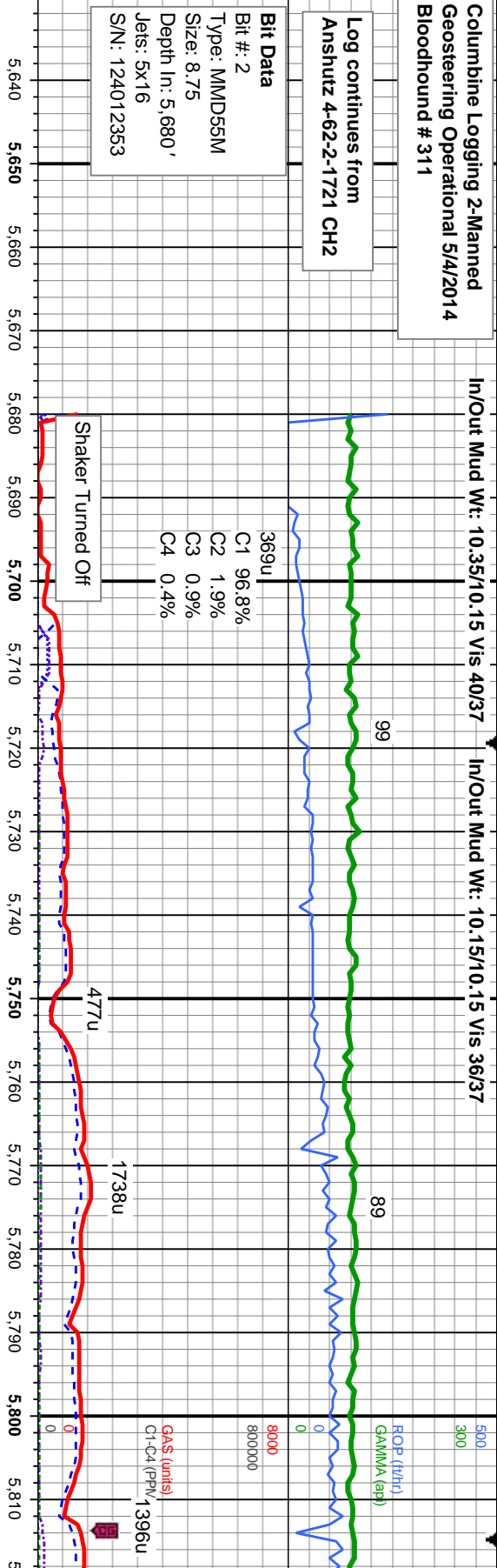
% Lith

Well Bore
TVD

Oil Show

Images

EGMFTSR



C1 96.8%
C2 1.9%
C3 0.9%
C4 0.4%

MD: 5,704'
TVD: 5,685.13'
Inclination: 3.1°
Azimuth: 77°
VS: -214.22'

MD: 5,752'
TVD: 5,732.87'
Inclination: 8.4°
Azimuth: 81°
VS: -209.48'

MD: 5,799'
TVD: 5,778.86'
Inclination: 15.1°
Azimuth: 88.4°
VS: -199.94'

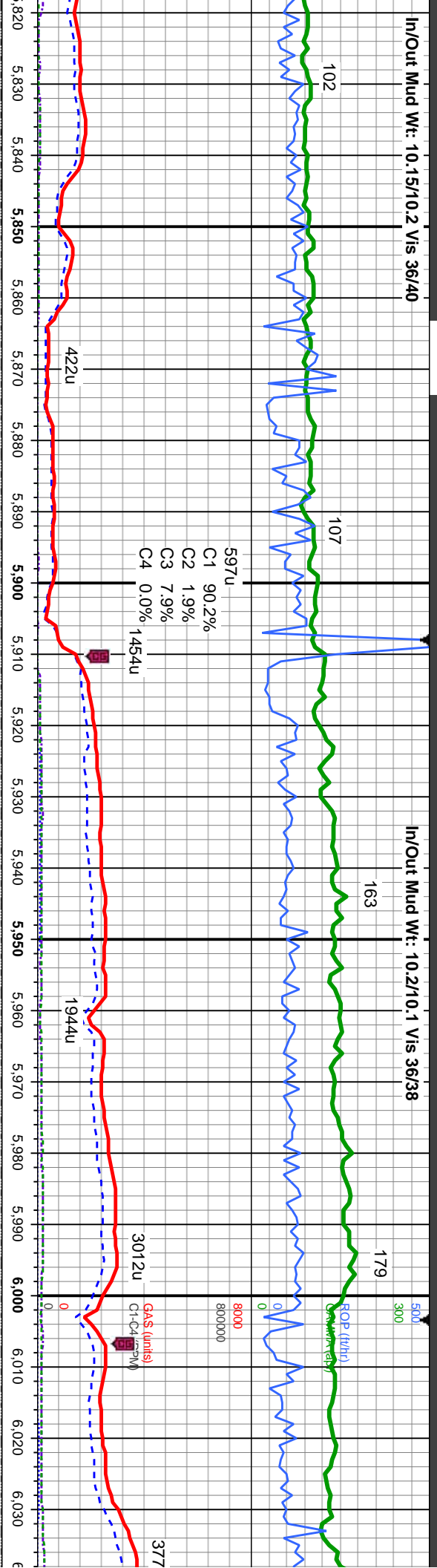
SHY SLTST: lt - med gy, gy brn, mod frm, sb-ply -
sb blkly, rthy tex, v'f occ l-med gr, w srt, non calc;
SLTY SH: med - dk gy, sft - frm, sb ply - sb blkly,
wxy tex, non calc, tr ss

SHY SLTST: lt - med gy, gy brn, mod frm, sb-ply -
sb blkly, rthy tex, v'f occ l-med gr, w srt, non calc;
SLTY SH: med - dk gy, sft - frm, sb ply - sb blkly,
wxy tex, non calc, tr ss

SHY SLTST: lt - med
sb blkly, rthy tex, v'
SLTY SH: med - dk
wxy tex, non calc, t

In/Out Mud Wt: 10.15/10.2 Vis 36/40

In/Out Mud Wt: 10.2/10.1 Vis 36/38



MD: 5,846'
TVD: 5,823.58'
Inclination: 20.6°
Azimuth: 88.2°
VS: -185.54'

MD: 5,893'
TVD: 5,866.89'
Inclination: 25.1°
Azimuth: 81.9°
VS: -167.37'

MD: 5,942'
TVD: 5,910.22'
Inclination: 30.5°
Azimuth: 76.8°
VS: -144.89'

MD: 5,989'
TVD: 5,948.81'
Inclination: 39°
Azimuth: 76.6°
VS: -118.74'

MD: 6,036'
TVD: 5,983'
Inclination: 4°
Azimuth: 79°
VS: -87.34'

Logger Top Sharon Springs
5913' MD/ 5884' TVD

Logger Top
6035' MD/ 5

SHY SLTST: lt - med gy, gy brn, mod frm, sb-ply -
sb blkly, rthy tex, v f occ f-med gr, w srt, non calc;
SLTY SH: med - dk gy, sft - frm, sb ply - sb blkly,
wxy tex, non calc, tr ss

SHY SLTST: lt - med gy, gy brn, mod frm, sb-ply -
sb blkly, rthy tex, v f occ f-med gr, w srt, non calc;
SLTY SH: med - dk gy, sft - frm, sb ply - sb blkly,
wxy tex, non calc, tr ss

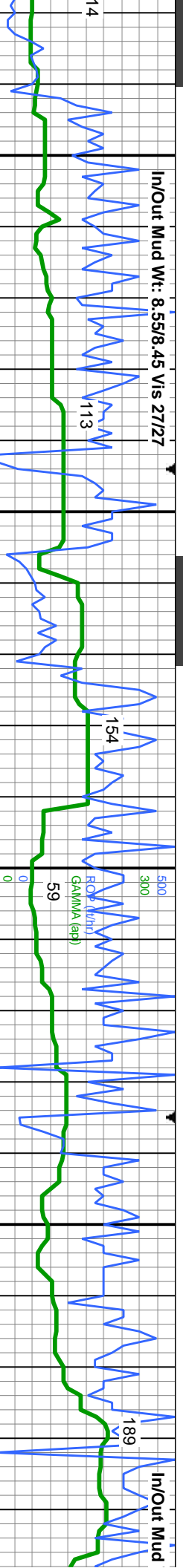
SHY SLTST: lt - med gy, gy brn, mod frm, sb-ply -
sb blkly, rthy tex, v f occ f-med gr, w srt, non calc;
SLTY SH: med - dk gy, sft - frm, sb ply - sb blkly,
wxy tex, non calc, com pyrc bent

SHY SLTST: lt - med gy, gy brn, mod frm, sb-ply -
sb blkly, rthy tex, v f occ f-med gr, w srt, non calc;
SLTY SH: med - dk gy, sft - frm, sb ply - s
wxy tex, sl calc, v com pyrc bent



In/Out Mud Wt: 8.55/8.45 Vis 27/27

In/Out Mud



Resumed Drilling @ 9:42 MST
5/7/2014

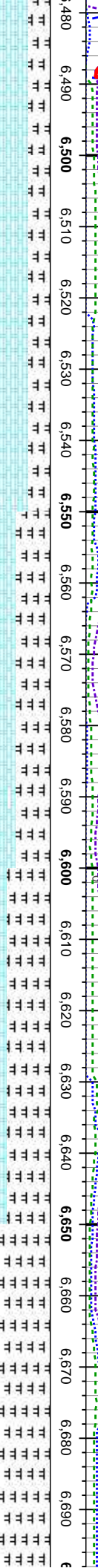
4169u
C1 80.2%
C2 8.0%
C3 11.8%
C4 0.0%

5348u

2000u

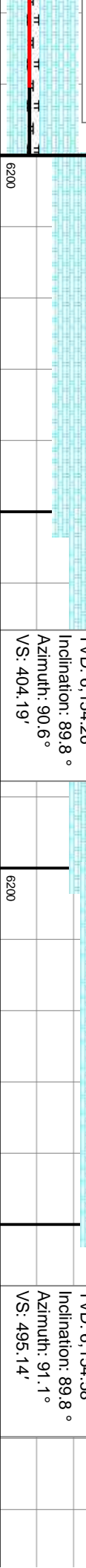
5308u

2115u



lam, mot, v sft-sft, sb ply-biky, v calc, crpxl, intbd w/marl MARL: y, fr- brt, sil, com
CHK: lt-med gy, some brn-red, lam, mot, v sft-sft, sb ply-biky, v calc, crpxl, intbd w/marl MARL: lt-dk gy, stri, sft-v sft, sb ply-pty, fr- brt, sil, com cal, tr pyr

MD: 6,485'
TVD: 6,155.93'
Inclination: 92.3°
Azimuth: 89°
VS: 313.22'



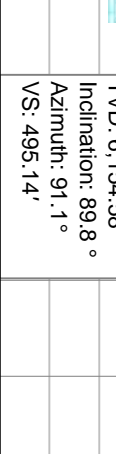
MD: 6,576'
TVD: 6,154.26'
Inclination: 89.8°
Azimuth: 90.6°
VS: 404.19'

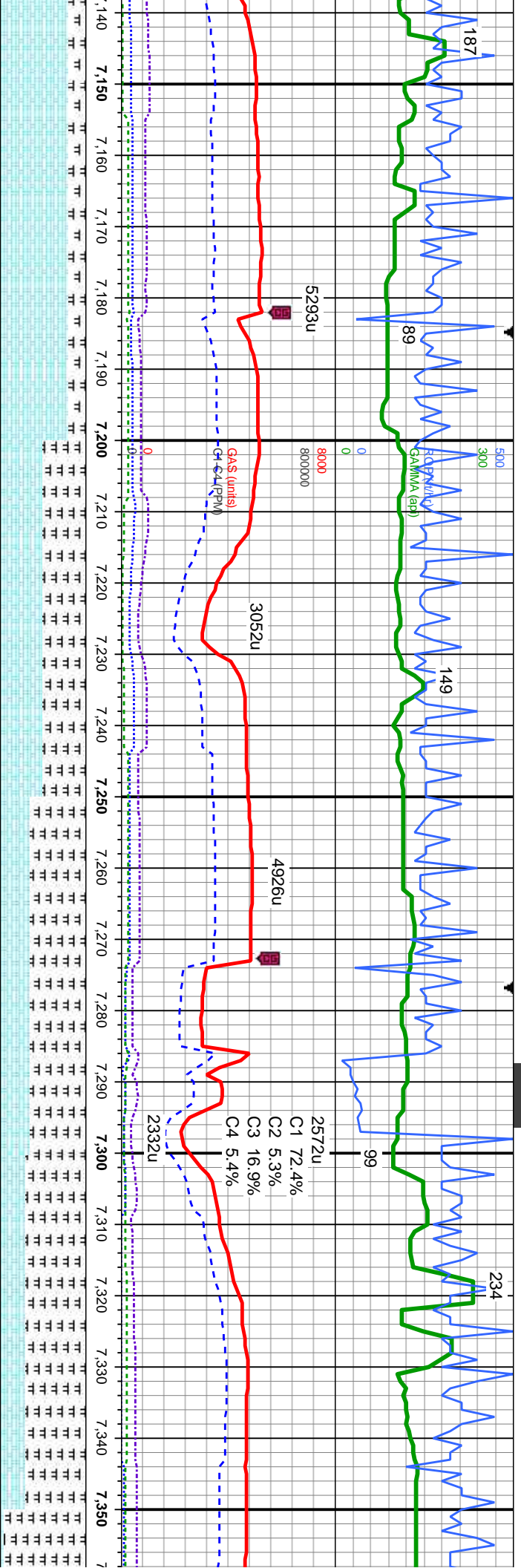
CHK: lt-med gy, some brn-red, lam, mot, v sft-sft, sb ply-biky, v calc, crpxl, intbd w/marl MARL: lt-dk gy, stri, sft-v sft, sb ply-pty, fr- brt, sil, com cal, tr pyr



MD: 6,667'
TVD: 6,154.58'
Inclination: 89.8°
Azimuth: 91.1°
VS: 495.14'

CHK: lt-med gy, some brn-red, lam, mot, v sft-sft, sb ply-biky, v calc, crpxl, intbd w/marl MARL: lt-dk gy, stri, sft-v sft, sb ply-pty, fr- brt, sil, com cal, tr pyr





MD: 7,217'
TVD: 6,146.92'
Inclination: 91.8 °
Azimuth: 91.7 °
VS: 1,044.42'

MD: 7,308'
TVD: 6,144.37'
Inclination: 91.4°
Azimuth: 90.3°
VS: 1,135.32'

...: It-dk
m cal, tr

CHK: lt-med gy, some br-med, lan, mot, v sft-sft, sb
ply-dlky, v calc, crptl, intbd w/mari MARL: lt-dk
gy, stri, sft-v-sft, sb ply-ply, fri- brit, sil, com cal, tr
pyr

CHK: lt-med gy, some brn-red, lam, mot, v sft-sft, sb
ply-dlky, v calc, crptl, intbd w/marl MARL: lt-dk
gy, stri, sft-v sft, sb ply-pty, fri- brit, sil, com cal, tr
pyr₂

CHK: lt-med gy, some brn-red, lan, mot, v stf-stf, sb
ply-dlky, v calc, crptl, intbd w/mañ MARL: lt-dk
gy, stri, stf-v stf, sb ply-pty, fri-brt, sil, com cal, tr
pyr

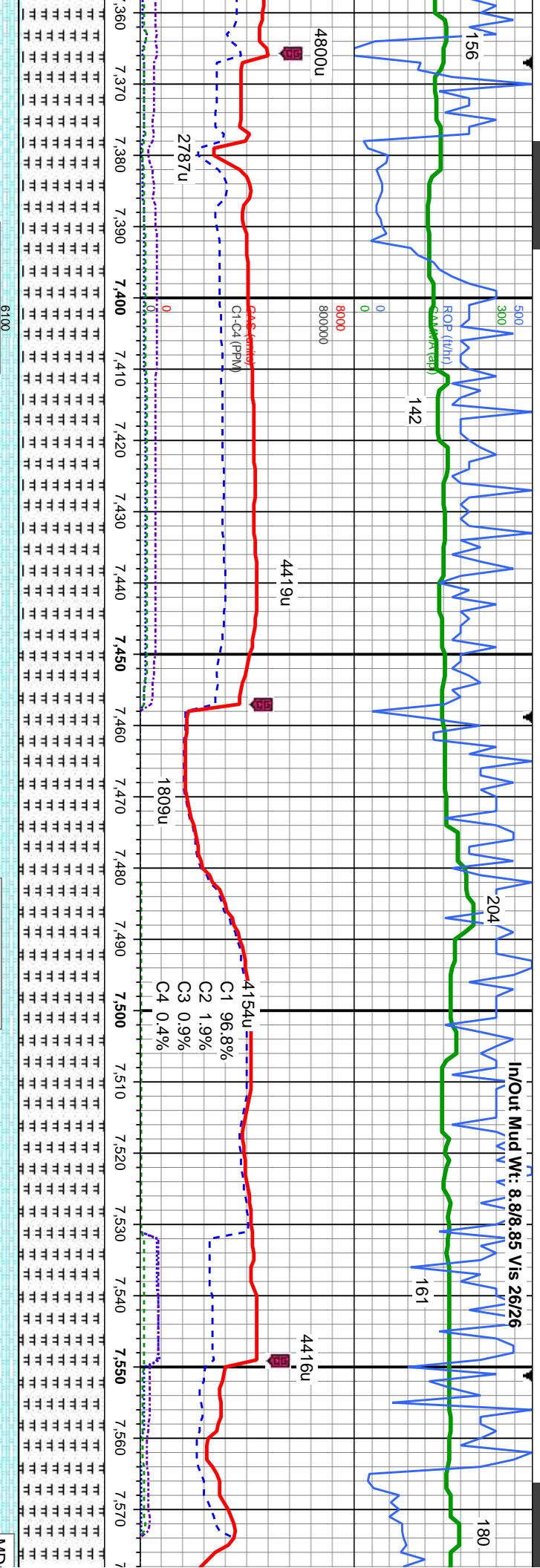
CHK: lt-med gy, some brn-red, lan, mot, v stf-stf, sb
ply-dlky, v calc, crptl, intbd w/manl MARL: lt-dk
gy, stri, stf-v stf, sb ply-pty, fri-brt, sil, com cal, tr
pyr

MARL: 1
sil; CHK
sb plty-t
tr cal, tr

TVD (ft)



In/Out Mud Wt: 8.8/8.85 Vis 26/26



MD: 7,400'
TVD: 6,143.81'
Inclination: 89.3 °
Azimuth: 89.1 °
VS: 1,227.31'

MD: 7,492'
TVD: 6,143.65'
Inclination: 90.9 °
Azimuth: 90 °
VS: 1,319.3'

med-dk gy, str, sft-v sft, sb pty-pty, fri- brt, sil, CHK: lt-med gy, some brn-red, lam, mod, v sft-sft, sb pty-bkly, v calc, crpxl, intbd w/marl, com bent, pyr	MD: 7,400' TVD: 6,143.81' Inclination: 89.3 ° Azimuth: 89.1 ° VS: 1,227.31'	MD: 7,492' TVD: 6,143.65' Inclination: 90.9 ° Azimuth: 90 ° VS: 1,319.3'	med-dk gy, str, sft-v sft, sb pty-pty, fri- brt, sil, CHK: lt-med gy, some brn-red, lam, mod, v sft-sft, sb pty-bkly, v calc, crpxl, intbd w/marl, com bent, pyr
--	---	--	--



In/Out Mud Wt: 9/8.9 Vis 26/26

MINDEPTH

135

5/8/2014

89

95

110

5013u

3797u

C1 72.9%

C2 6.3%

C3 16.3%

C4 4.5%

4552u

8000

800000

4841u

GAS (units)

C1-C4 (PPM)

2439u

2662u

0

0

8,240 8,250 8,260 8,270 8,280 8,290 8,300 8,310 8,320 8,330 8,340 8,350 8,360 8,370 8,380 8,390 8,400 8,410 8,420 8,430 8,440 8,450

MD: 8,318'

TVD: 6,157.88'

Inclination: 89.7°

Azimuth: 87.3°

VS: 2,144.75'

MD: 8,411'

TVD: 6,157.64'

Inclination: 90.6°

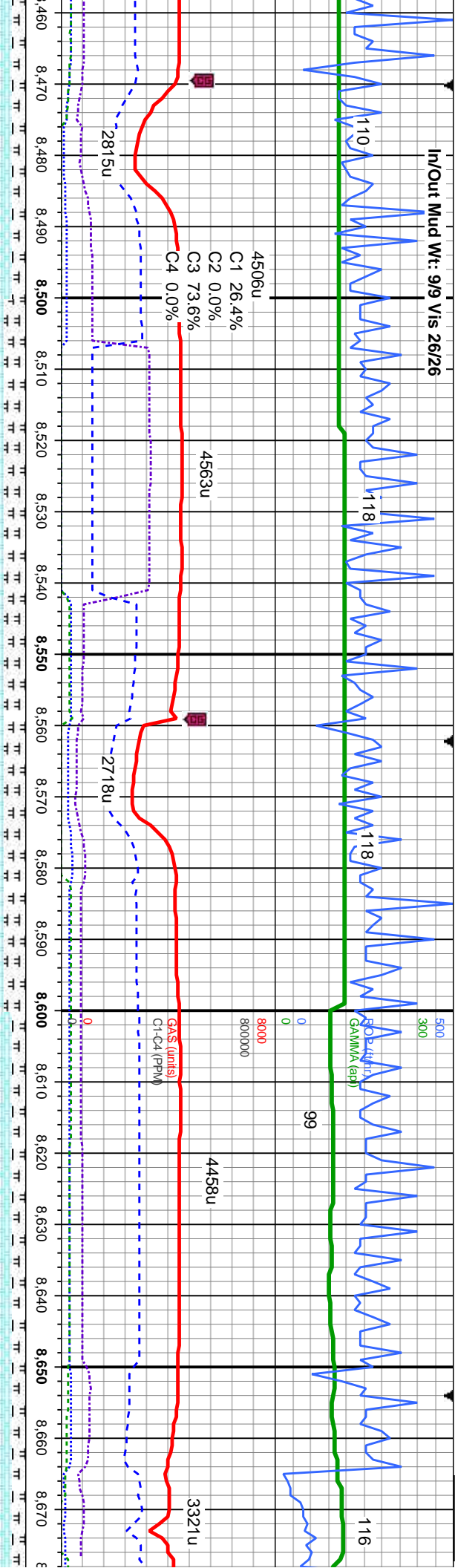
Azimuth: 87.8°

VS: 2,237.71'

sft, sb	CHK: lt-med gy, some brn, lam, mot, v sft-sft, sb	CHK: lt-med gy, some brn, lam, mot, v sft-sft, sb	CHK: lt-med gy, some brn, lam, mot, v sft-sft, sb	CHK: lt-med gy, some brn, lam, mot, v sft-sft, sb
ply-bkly, v calc, crptxl, intbd w/mari; MARL: lt-dk	ply-bkly, v calc, crptxl, intbd w/mari; MARL: lt-dk	ply-bkly, v calc, crptxl, intbd w/mari; MARL: lt-dk	ply-bkly, v calc, crptxl, intbd w/mari; MARL: lt-dk	ply-bkly, v calc, crptxl, intbd w/mari; MARL: lt-dk
gy, strl, sft-v sft, sb ply-plty, fri- brlt, sil; com bent, tr	gy, strl, sft-v sft, sb ply-plty, fri- brlt, sil; com bent, tr	gy, strl, sft-v sft, sb ply-plty, fri- brlt, sil; com bent, tr	gy, strl, sft-v sft, sb ply-plty, fri- brlt, sil; com bent, tr	gy, strl, sft-v sft, sb ply-plty, fri- brlt, sil; com bent, tr
cal, tr dissn pyr	cal, tr dissn pyr	cal, tr dissn pyr	cal, tr dissn pyr	cal, tr dissn pyr



In/Out Mud Wt: 9/9 Vis 26/26



MD: 8,503'
TVD: 6,156.52'
Inclination: 90.8°
Azimuth: 86.4°
VS: 2,329.65'

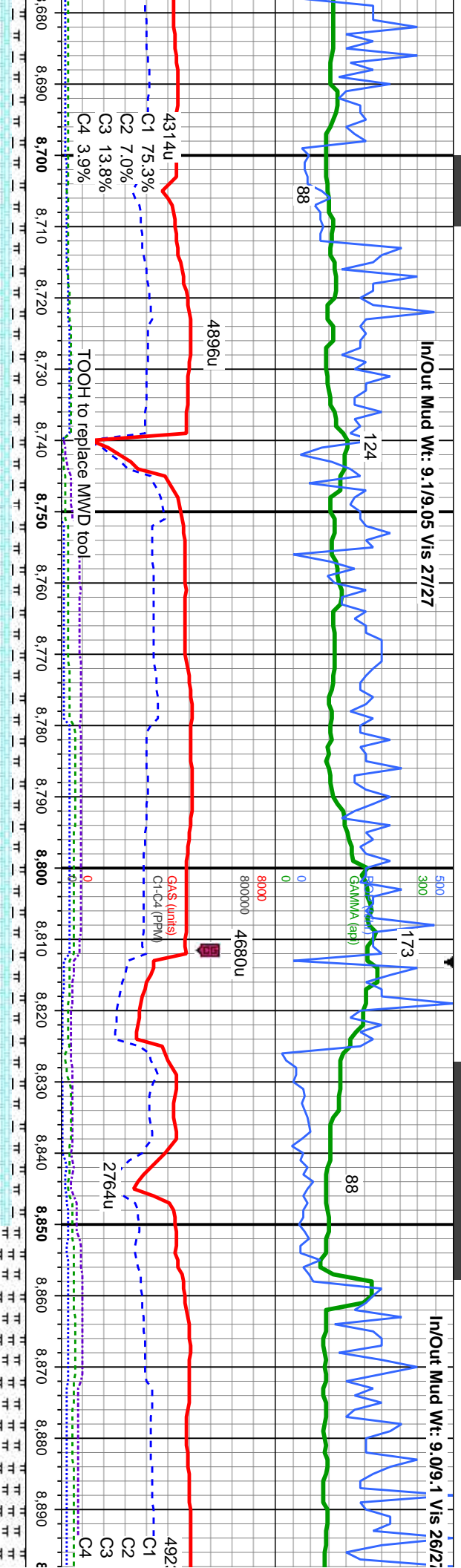
MD: 8,595'
TVD: 6,155.55'
Inclination: 90.4°
Azimuth: 85.6°
VS: 2,421.52'

med gy, some brn, lam, mot, v sft-sft, sb v calc, crpxl, intbd w/mari; MARL: lt-dk frt-v sft, sb ply-ply, frt- brt, sil; com bent, tr	CHK: lt-med gy, some brn, lam, mot, v sft-sft, sb ply-biky, v calc, crpxl, intbd w/mari; MARL: lt-dk gy, str, sft-v sft, sb ply-ply, frt- brt, sil; com bent, tr dissm pyr, tr cal	CHK: lt-med gy, some brn, lam, mot, v sft-sft, sb ply-biky, v calc, crpxl, intbd w/mari; MARL: lt-dk gy, str, sft-v sft, sb ply-ply, frt- brt, sil; com bent, tr dissm pyr, tr cal	CHK: lt-med gy, some brn, lam, mot, v sft-sft, sb ply-biky, v calc, crpxl, intbd w/mari; MARL: lt-dk gy, str, sft-v sft, sb ply-ply, frt- brt, sil; com bent, tr dissm pyr, tr cal	CHK: lt-med gy, some brn, lam, mot, v sft-sft, sb ply-biky, v calc, crpxl, intbd w/mari; MARL: lt-dk gy, str, sft-v sft, sb ply-ply, frt- brt, sil; com bent, tr dissm pyr, tr cal
---	---	---	---	---



In/Out Mud Wt: 9.1/9.05 Vis 27/27

In/Out Mud Wt: 9.0/9.1 Vis 26/27



D: 8,686'
D: 6,153.88'
Inclination: 91.7°
Azimuth: 84.6°
VS: 2,512.28'

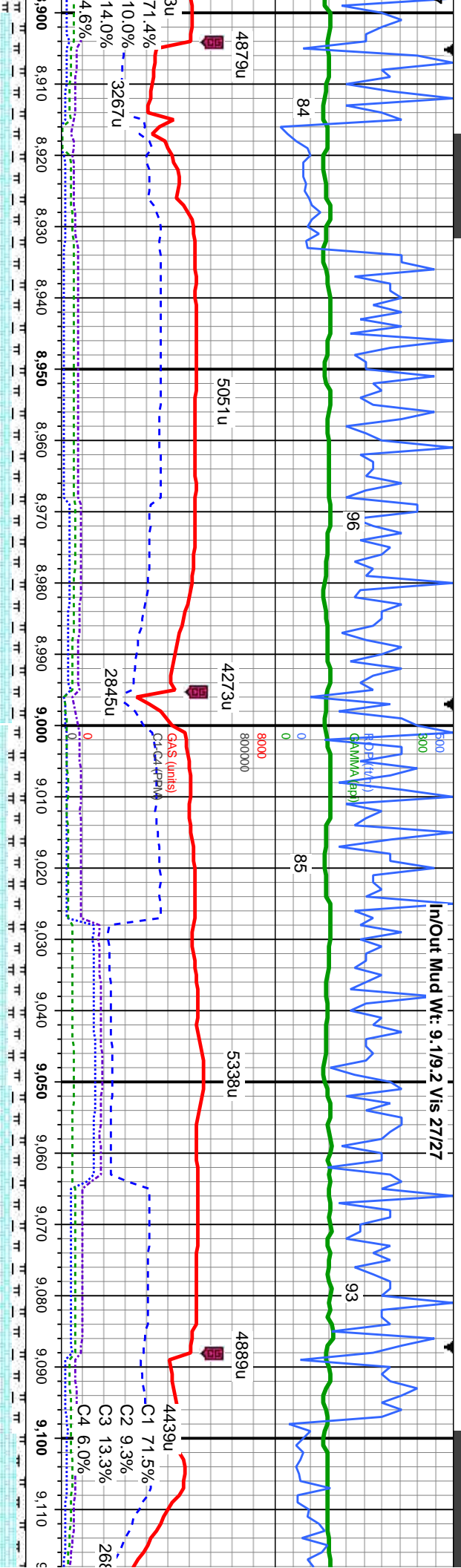
MD: 8,754'
TVD: 6,151.22'
Inclination: 92.8°
Azimuth: 85.8°
VS: 2,580.08'

MD: 8,846'
TVD: 6,147.84'
Inclination: 91.4°
Azimuth: 86.7°
VS: 2,671.9'

mot, v sft-sft, sb	CHK: lt-med gy, some brn, lam, mot, v sft-sft, sb	CHK: lt-med gy, some brn, lam, mot, v sft-sft, sb	CHK: lt-med gy, some brn, lam, mot, v sft-sft, sb
ply-bkly, v calc, crpxl, intbd w/mari; MARL: lt-dk	ply-bkly, v calc, crpxl, intbd w/mari; MARL: lt-dk	ply-bkly, v calc, crpxl, intbd w/mari; MARL: lt-dk	ply-bkly, v calc, crpxl, intbd w/mari; MARL: lt-dk
brit, sil, com bent, tr	gy, str, sft-v sft, sb ply-ply, fir- brit, sil, com bent, tr	gy, str, sft-v sft, sb ply-ply, fir- brit, sil, com bent, tr	gy, str, sft-v sft, sb ply-ply, fir- brit, sil, com bent, tr
	dissm pyr, tr cal	dissm pyr, tr cal	dissm pyr, tr cal



In/Out Mud Wt: 9.1/9.2 Vis 27/27



MD: 8,938'
TVD: 6,146.32'
Inclination: 90.5°
Azimuth: 88.2°
VS: 2,763.85'

MD: 9,028'
TVD: 6,145.77'
Inclination: 90.2°
Azimuth: 86.5°
VS: 2,853.81'

MD: 9,110'
TVD: 6,110'
Inclination: 90.2°
Azimuth: 86.5°
VS: 2,940'

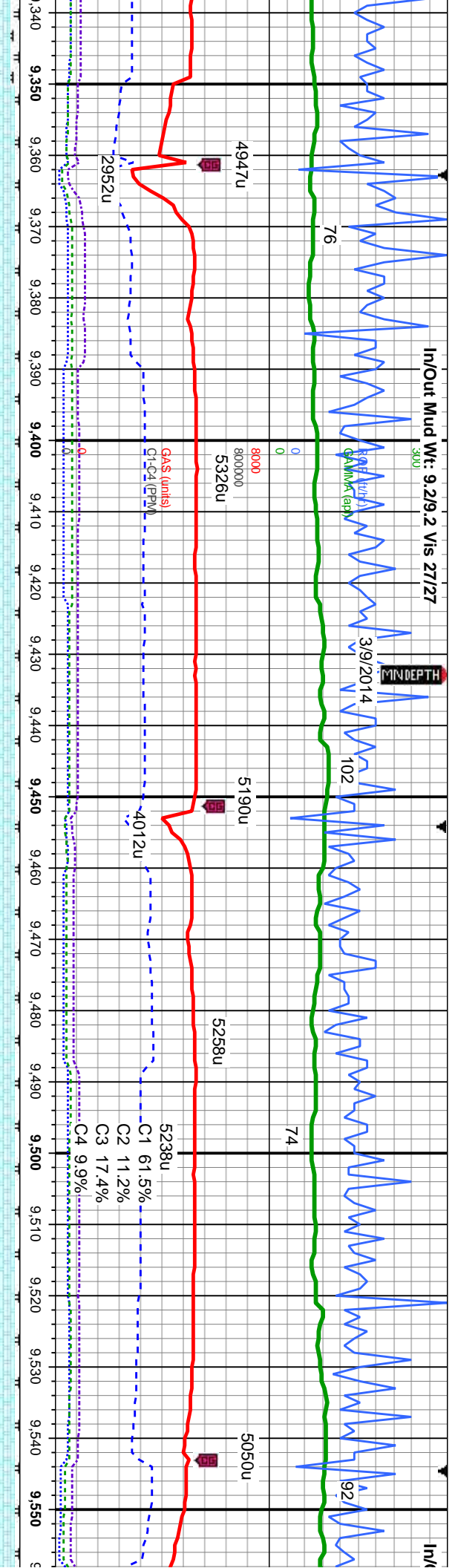
CHK: lt-med gy, some brn, lam, mot, v sft-sft, sb ply-bkly, v calc, crptd, intbd w/mari; MARL: lt-dk gy, str, sft-v sft, sb ply-ply, fir- brit, sil, tr bent, tr cal	CHK: lt-med gy, some brn, lam, mot, v sft-sft, sb ply-bkly, v calc, crptd, intbd w/mari; MARL: lt-dk gy, str, sft-v sft, sb ply-ply, fir- brit, sil, tr bent, tr cal	CHK: lt-med gy, some brn, lam, mot, v sft-sft, sb ply-bkly, v calc, crptd, intbd w/mari; MARL: lt-dk gy, str, sft-v sft, sb ply-ply, fir- brit, sil, tr bent, tr cal	CHK: lt-med gy, some brn, lam, mot, v sft-sft, sb ply-bkly, v calc, crptd, intbd w/mari; MARL: lt-dk gy, str, sft-v sft, sb ply-ply, fir- brit, sil, tr bent, tr cal	CHK: lt-med gy, some brn, lam, mot, v sft-sft, sb ply-bkly, v calc, crptd, intbd w/mari; MARL: lt-dk gy, str, sft-v sft, sb ply-ply, fir- brit, sil, tr bent, tr cal
--	--	--	--	--



In/Out Mud Wt: 9.2/9.2 Vis 27/27

3/9/2014

In/

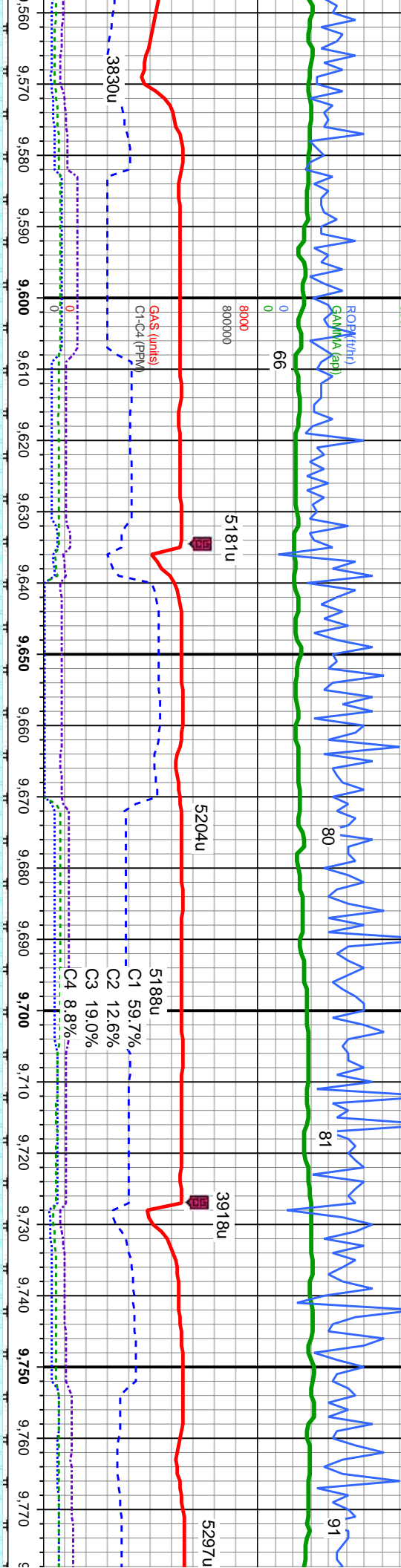


sft, sb	CHK: lt-med gy, some brn, lam, mot, v sft-sft, sb	TVD (ft)	CHK: lt-med gy, some brn, lam, mot, v sft-sft, sb
lt-dk	ply-bkly, v calc, crpxl, intbd w/mari; MARL: lt-dk		ply-bkly, v calc, crpxl, intbd w/mari; MARL: lt-dk
bent, tr	gy, stri, sft-v sft, sb ply-ply, fri- brt, sil; tr bent, tr		gy, stri, sft-v sft, sb ply-ply, fri- brt, sil; tr bent
dissm pyr		6200	



Out Mud Wt: 9.3/9.2 Vis 27/28

In/Out Mud Wt: 9.3/9.3 Vis 28/27



MD: 9,578'
TVD: 6,140.79'
Inclination: 89.8 °
Azimuth: 91 °
VS: 3,403.59'

MD: 9,671'
TVD: 6,140.55'
Inclination: 90.5 °
Azimuth: 91.8 °
VS: 3,496.51'

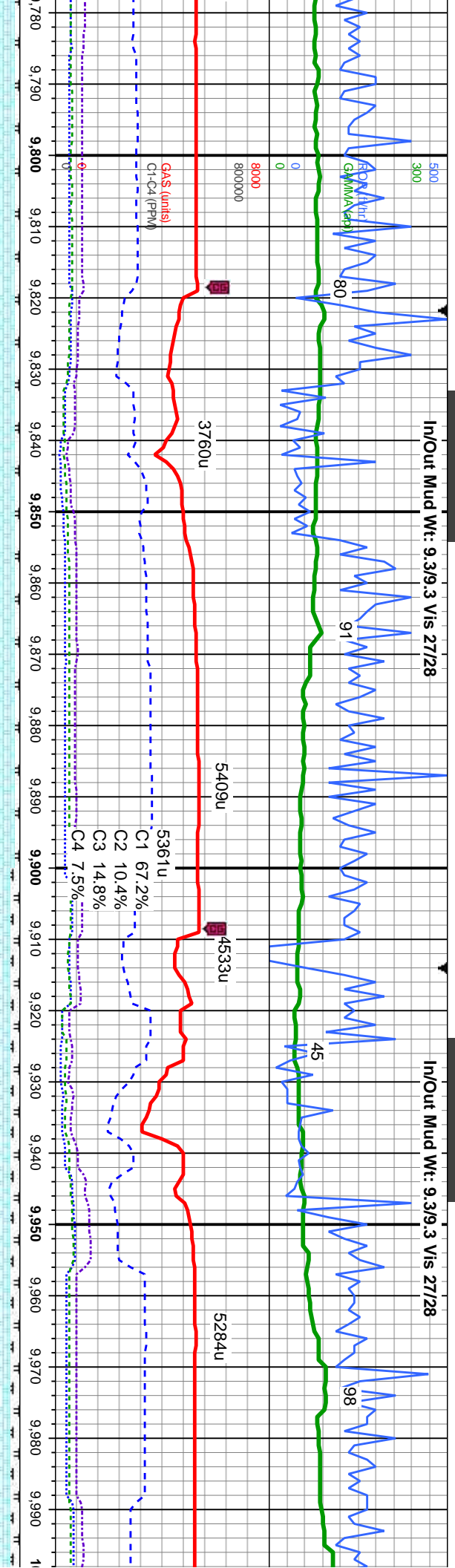
MD: 9,763'
TVD: 6,139.74'
Inclination: 90.5 °
Azimuth: 92.5 °
VS: 3,588.37'

TVD (ft)	CHK: lt-med gy, some brn, lam, mot, v sft-sft, sb ply-dlky, v calc, crpxl, intbd w/mari; MARL: med-dk gy, stri, sft-v sft, sb ply-ply, frt- brt, sil; tr bent	CHK: lt-med gy, some brn, lam, mot, v sft-sft, sb ply-dlky, v calc, crpxl, intbd w/mari; MARL: med-dk gy, stri, sft-v sft, sb ply-ply, frt- brt, sil; tr bent	CHK: lt-med gy, some brn, lam, mot, v sft-sft, sb ply-dlky, v calc, crpxl, intbd w/mari; MARL: med-dk gy, stri, sft-v sft, sb ply-ply, frt- brt, sil; tr bent	CHK: lt-med gy, some brn, lam, mot, v sft-sft, sb ply-dlky, v calc, crpxl, intbd w/mari; MARL: med-dk gy, stri, sft-v sft, sb ply-ply, frt- brt, sil; tr bent
----------	---	---	---	---



In/Out Mud Wt: 9.3/9.3 Vis 27/28

In/Out Mud Wt: 9.3/9.3 Vis 27/28

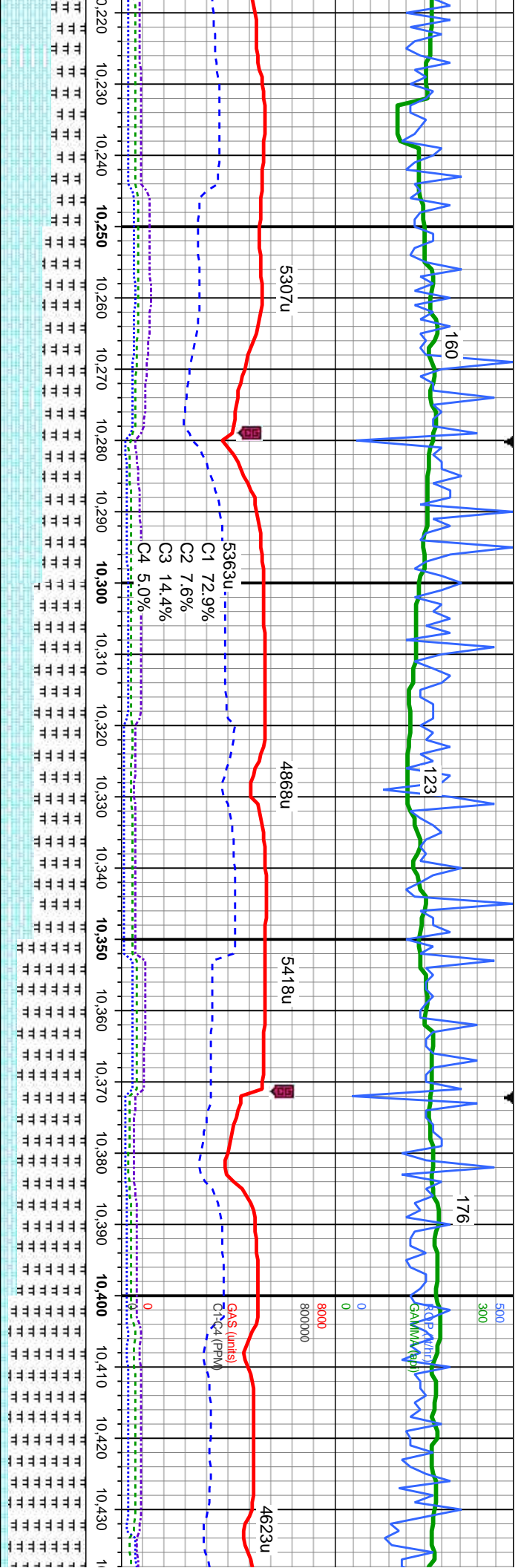


MD: 9,855'
TVD: 6,139.98'
Inclination: 89.2°
Azimuth: 91.4°
VS: 3,680.24'

MD: 9,946'
TVD: 6,141.1'
Inclination: 89.4°
Azimuth: 89.7°
VS: 3,771.2'

mot, v sft-sft, sb	CHK: lt-med gy, some brn, lam, mot, v sft-sft, sb	CHK: lt-med gy, some brn, lam, mot, v sft-sft, sb	CHK: lt-med gy, some brn, lam, mot, v sft-sft, sb
ply-bkly, v calc, crpxl, intbd w/mari; MARL:	ply-bkly, v calc, crpxl, intbd w/mari; MARL:	ply-bkly, v calc, crpxl, intbd w/mari; MARL:	ply-bkly, v calc, crpxl, intbd w/mari; MARL:
med-dk gy, stri, sft-v sft, sb ply-ply, frt- brt, sli; tr	med-dk gy, stri, sft-v sft, sb ply-ply, frt- brt, sli; tr	med-dk gy, stri, sft-v sft, sb ply-ply, frt- brt, sli; tr	med-dk gy, stri, sft-v sft, sb ply-ply, frt- brt, sli; tr
bent	bent	bent	bent



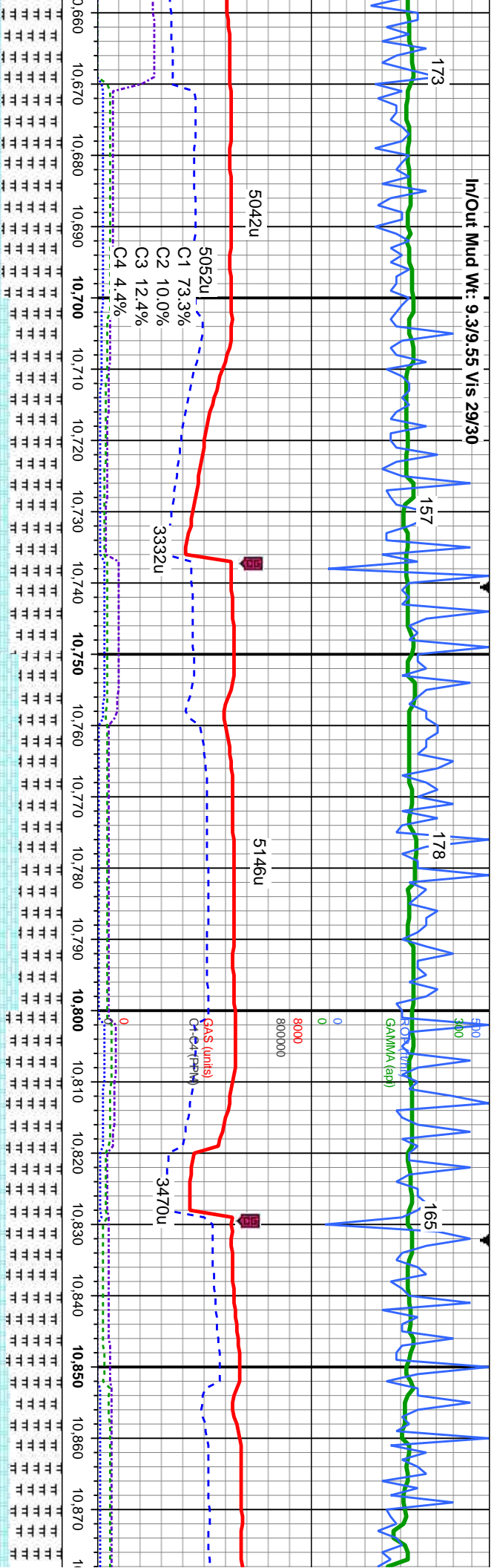


MD: 10,313'
TVD: 6,140.58'
Inclination: 90.1 °
Azimuth: 89.3 °
VS: 4,138.08'

MD: 10,405'
TVD: 6,140.26'
Inclination: 90.3 °
Azimuth: 88.8 °
VS: 4,230.08'

some brn, lam, mot, v sft-sft, sb	CHK: lt-med gy, some brn, lam, mot, v sft-sft, sb	CHK: lt-med gy, some brn, lam, mot, v sft-sft, sb	CHK: lt-med gy, some brn, lam, mot, v sft-sft, sb
pxl, intbd w/mari; MARL:	ply-biky, v calc, cpxl, intbd w/mari; MARL:	ply-biky, v calc, cpxl, intbd w/mari; MARL:	ply-biky, v calc, cpxl, intbd w/mari; MARL:
v sft, sb ply-ply, fri- brt, sil; tr	med-dk gy, stri, sft-v sft, sb ply-ply, fri- brt, sil; tr	med-dk gy, stri, sft-v sft, sb ply-ply, fri- brt, sil; tr	med-dk gy, stri, sft-v sft, sb ply-ply, fri- brt, sil; tr
	bent	bent	bent





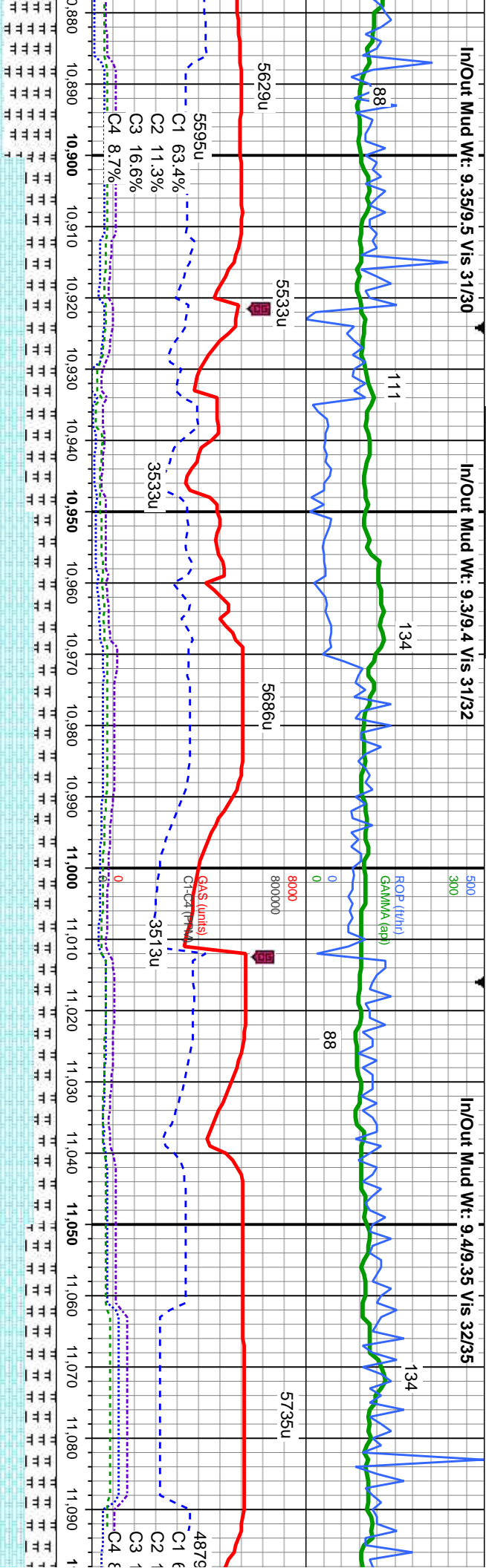
MD: 10,681'
TVD: 6,138.33'
Inclination: 90.1 °
Azimuth: 86.5°
VS: 4,506.03'

MD: 10,773'
TVD: 6,138.09'
Inclination: 90.2 °
Azimuth: 85.2°
VS: 4,597.88'

MD: 10,865'
TVD: 6,139.05'
Inclination: 88.6 °
Azimuth: 82.7°
VS: 4,689.5'

med gy, some brn, lam, mot, v sft-sft, sb	CHK: lt-med gy, some brn, lam, mot, v sft-sft, sb	CHK: lt-med gy, some brn, lam, mot, v sft-sft, sb	CHK: lt-med gy, some brn, lam, mot, v sft-sft, sb
v calc, crpxl, intbd w/mari; MARL:	ply-biky, v calc, crpxl, intbd w/mari; MARL:	ply-biky, v calc, crpxl, intbd w/mari; MARL:	ply-biky, v calc, crpxl, intbd w/mari; MARL:
gy, stri, sft-v sft, sb ply-ply, fri- brt, sil; tr	med-dk gy, stri, sft-v sft, sb ply-ply, fri- brt, sil; tr	med-dk gy, stri, sft-v sft, sb ply-ply, fri- brt, sil; tr	med-dk gy, stri, sft-v sft, sb ply-ply, fri- brt, sil; tr
	cal	cal	cal





MD: 10,957'
TVD: 6,140.9'
Inclination: 89.1 °
Azimuth: 82.8 °
VS: 4,780.93'

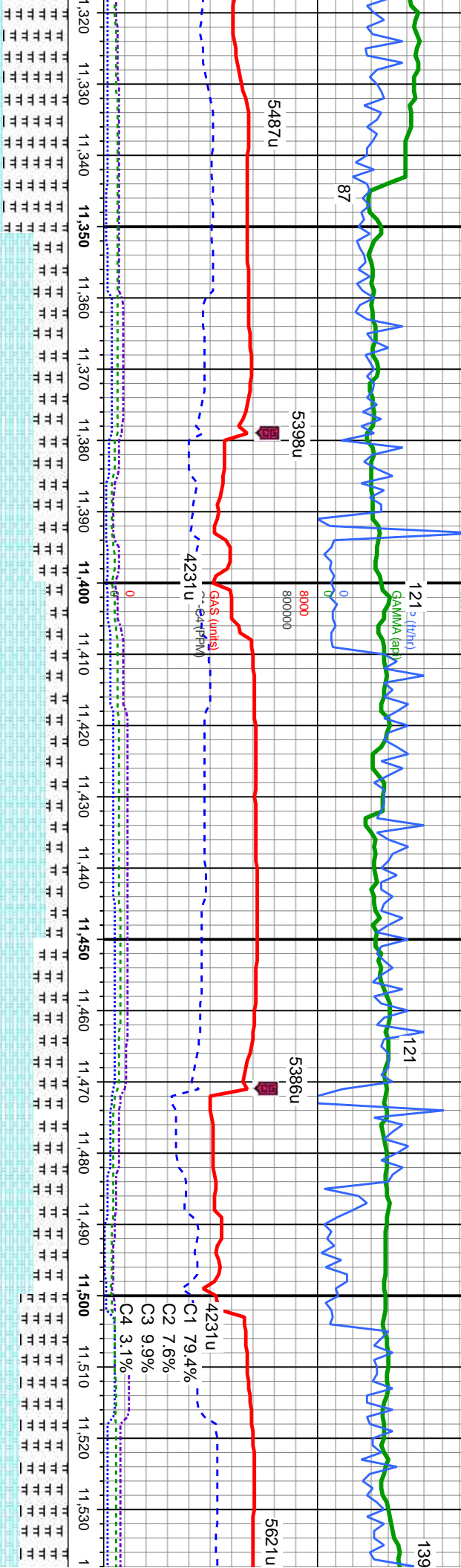
MD: 11,048'
TVD: 6,140.9'
Inclination: 90.9 °
Azimuth: 84.1 °
VS: 4,871.49'

In/Out Mud Wt: 9.35/9.5 Vis 31/30		In/Out Mud Wt: 9.3/9.4 Vis 31/32		In/Out Mud Wt: 9.4/9.35 Vis 32/35	
mot, v sft-sft, sb		CHK: lt-med gy, some brn, lam, mot, v sft-sft, sb		CHK: lt-med gy, some brn, lam, mot, v sft-sft, sb	
marl; MARL:		ply-bkly, v calc, crpxl, intbd w/marl; MARL:		ply-bkly, v calc, crpxl, intbd w/marl; MARL:	
-ply, fri- brt, sil; tr		med-dk gy, stri, sft-v sft, sb ply-ply, fri- brt, sil; tr		med-dk gy, stri, sft-v sft, sb ply-ply, fri- brt, sil; tr	
cal		cal		cal	



In/Out Mud Wt: 9.4/9.4 Vis 34/38

In/Out Mu



~37' Fault

MD: 11,324'
TVD: 6,133.14'
Inclination: 92.3°
Azimuth: 87°
VS: 5,146.67'

MD: 11,415'
TVD: 6,131.08'
Inclination: 90.3°
Azimuth: 87.2°
VS: 5,237.59'

MD: 11,507'
TVD: 6,131.48'
Inclination: 89.2°
Azimuth: 88.2°
VS: 5,329.56'

CHK: It-med gy, some brn, lam, mot, v sft-sft, sb
ply-bilky, v calc, crptxl, intbd w/mari; MARL:
med-dk gy, stri, sft-v sft, sb ply-ply, fri- brt, sil; rr
cal

CHK: It-med gy, some brn, lam, mot, v sft-sft, sb
ply-bilky, v calc, crptxl, intbd w/mari; MARL:
med-dk gy, stri, sft-v sft, sb ply-ply, fri- brt, sil; rr
cal

CHK: It-med gy, some brn, lam, mot, v sft-sft, sb
ply-bilky, v calc, crptxl, intbd w/mari; MARL:
med-dk gy, stri, sft-v sft, sb ply-ply, fri- brt, sil; rr
cal

CHK: It-med gy, some brn, lam, mot, v sft-sft, sb
ply-bilky, v calc, crptxl, intbd w/mari; MARL:
med-dk gy, stri, sft-v sft, sb ply-ply, fri- brt, sil; rr
cal

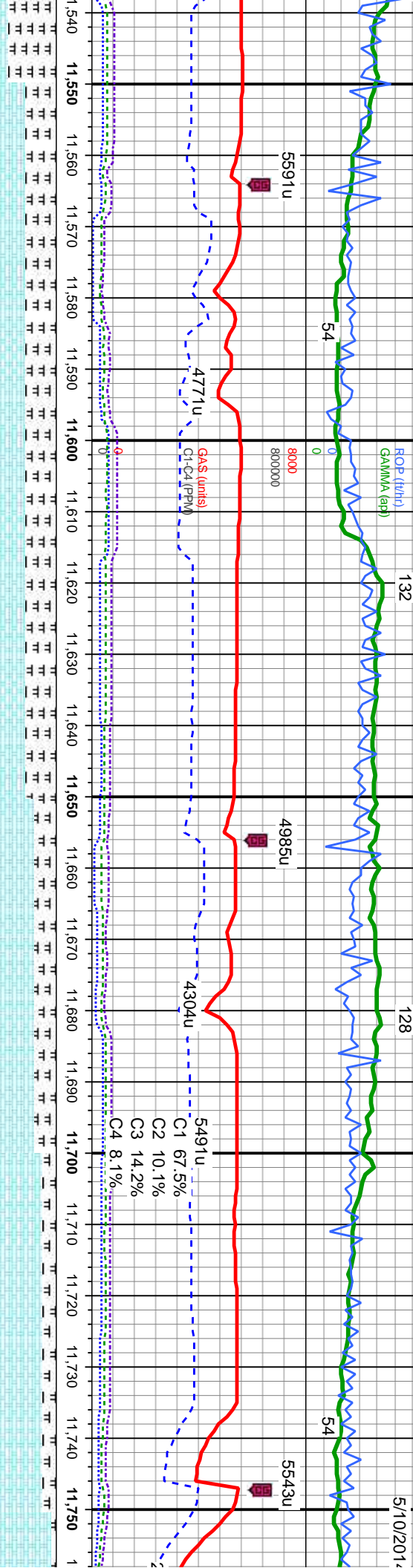


Id Wt: 9.5/9.4 Vis 35/39

In/Out Mud Wt: 9.5/9.5 Vis 36/39



5/10/2014



MD: 11,598'
TVD: 6,132.27'
Inclination: 89.8°
Azimuth: 88.9°
VS: 5,420.55'

MD: 11,690'
TVD: 6,132.27'
Inclination: 90.2°
Azimuth: 89.4°
VS: 5,512.55'

CHK: lt-med gy, some brn, lam, mot, v sft-sft, sb	CHK: lt-med gy, some brn, lam, mot, v sft-sft, sb	CHK: lt-med gy, some brn, lam, mot, v sft-sft, sb	CHK: lt-med gy, some brn, lam, mot, v sft-sft, sb
ply-bkly, v calc, crpxl, intbd w/mari; MARL:	ply-bkly, v calc, crpxl, intbd w/mari; MARL:	ply-bkly, v calc, crpxl, intbd w/mari; MARL:	ply-bkly, v calc, crpxl, intbd w/mari; MARL:
med-dk gy, stri, sft-v sft, sb ply-ply, frt- brt, sil; rr	med-dk gy, stri, sft-v sft, sb ply-ply, frt- brt, sil; rr	med-dk gy, stri, sft-v sft, sb ply-ply, frt- brt, sil; rr	med-dk gy, stri, sft-v sft, sb ply-ply, frt- brt, sil; rr
cal	cal	cal	cal



In/Out Mud Wt: 9.4/9.5 Vis 35/39

In/Out Mud Wt: 9.5/9.5 Vis 33/35

In/Out Mud Wt: 9.4

90

ROP (ft/hr)
GAMMA (cp)
91

80000

5318u

61

62

5426u

3798u

5491u
C1 66.8%
C2 10.5%
C3 15.4%
C4 7.3%

GAS (units)
C1-C4 (PPM)

935u

11,760 11,770 11,780 11,790 11,800 11,810 11,820 11,830 11,840 11,850 11,860 11,870 11,880 11,890 11,900 11,910 11,920 11,930 11,940 11,950 11,960 11,970 1

6100

MD: 11,782'
TVD: 6,131.71'
Inclination: 90.5°
Azimuth: 90.1°
VS: 5,604.54'

TVD (ft)

MD: 11,874'
TVD: 6,130.51'
Inclination: 91°
Azimuth: 90.4°
VS: 5,696.51'

CHK: lt-med gy, some brn, lam, mot, v sft-sft, sb
ply-bkly, v calc, crptxl, intbd w/mari; MARL:
med-dk gy, stri, sft-v sft, sb ply-ply, frt- brt, sil; rr
cal

CHK: lt-med gy, some brn, lam, mot, v sft-sft, sb
ply-bkly, v calc, crptxl, intbd w/mari; MARL:
med-dk gy, stri, sft-v sft, sb ply-ply, frt- brt, sil; rr
cal

CHK: lt-med gy, some brn, lam, mot, v sft-sft, sb
ply-bkly, v calc, crptxl, intbd w/mari; MARL:
med-dk gy, stri, sft-v sft, sb ply-ply, frt- brt, sil; rr
cal

CHK: lt-med gy, some brn, lam, mot, v sft-sft, sb
ply-bkly, v calc, crptxl, intbd w/mari; MARL:
med-dk gy, stri, sft-v sft, sb ply-ply, frt- brt, sil; rr
cal

MD: 11,966'
TVD: 6,129.38'
Inclination: 90.4°
Azimuth: 91.3°
VS: 5,788.46'

med gy, some brn, lam, mot, v sft-sft, sb
ply-bkly, v calc, crptxl, intbd w/mari; MARL:
med-dk gy, stri, sft-v sft, sb ply-ply, frt- brt, sil; rr

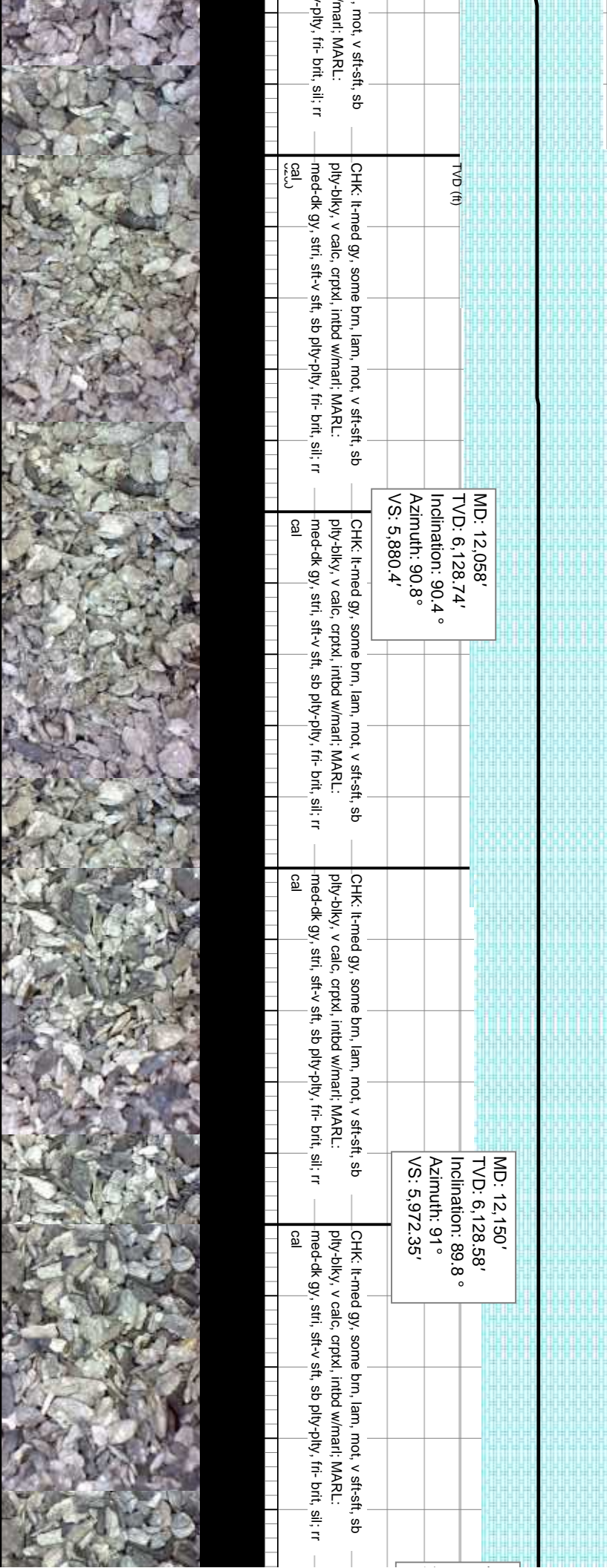
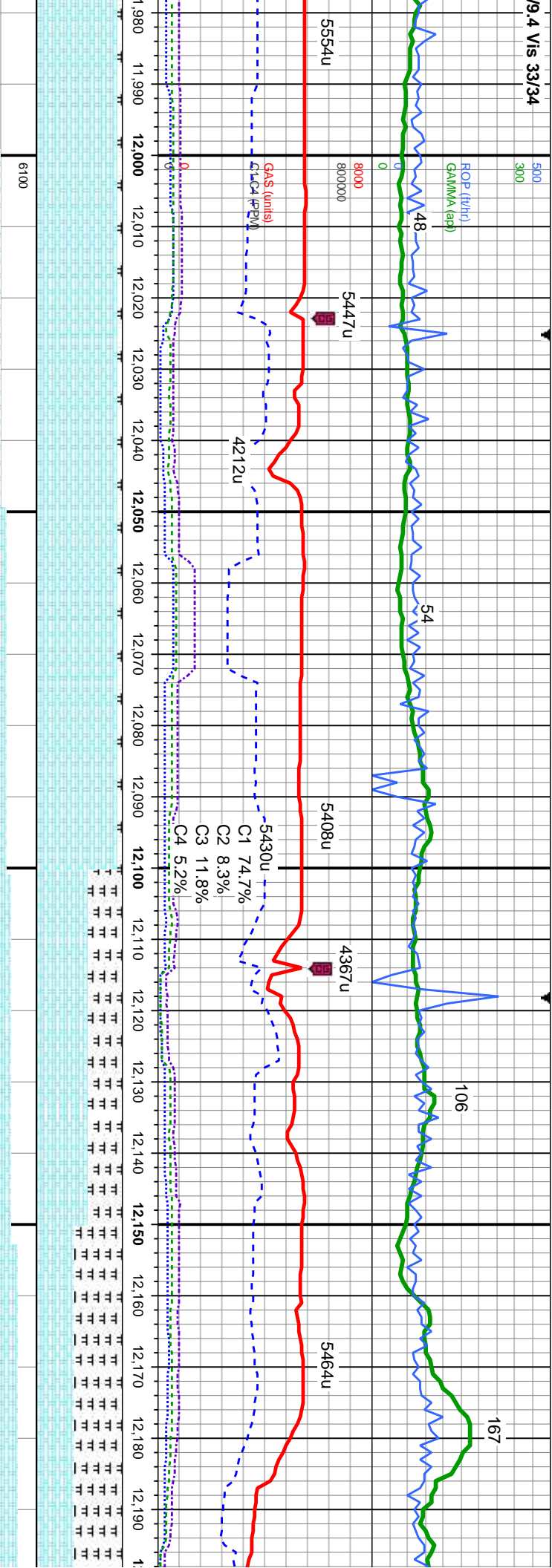
CHK: lt-med gy, some brn, lam, mot, v sft-sft, sb
ply-bkly, v calc, crptxl, intbd w/mari; MARL:
med-dk gy, stri, sft-v sft, sb ply-ply, frt- brt, sil; rr
cal

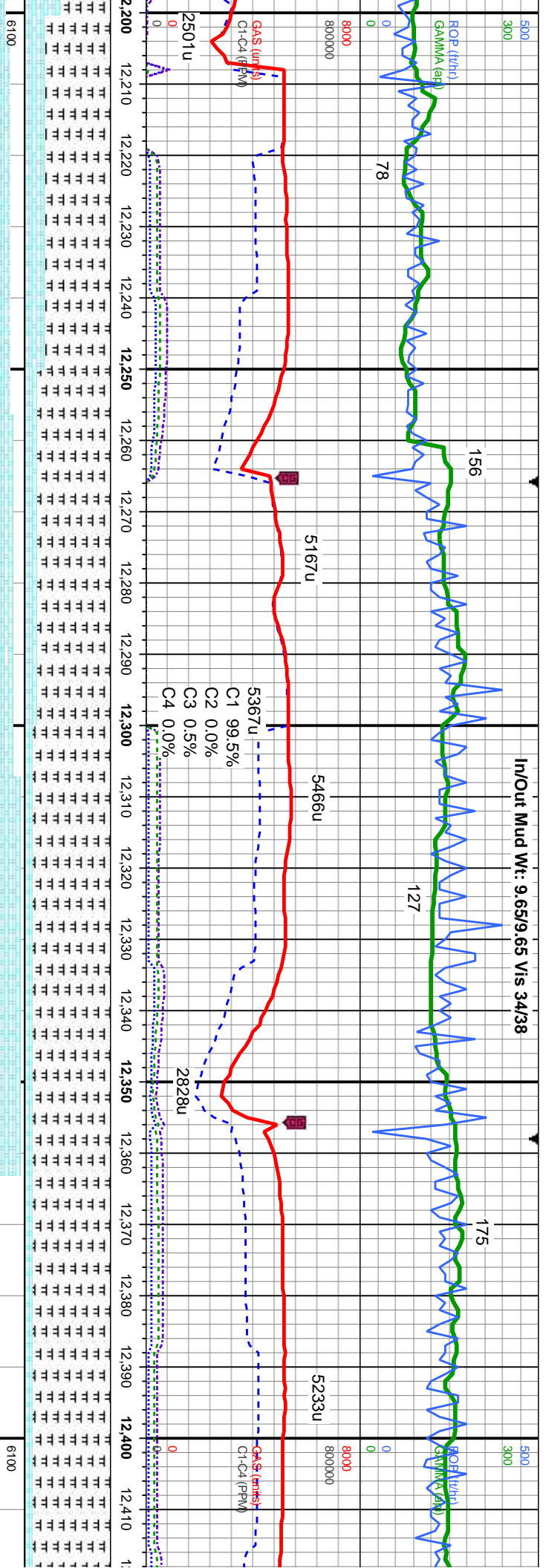
CHK: lt-med gy, some brn, lam, mot, v sft-sft, sb
ply-bkly, v calc, crptxl, intbd w/mari; MARL:
med-dk gy, stri, sft-v sft, sb ply-ply, frt- brt, sil; rr
cal

CHK: lt-med gy, some brn, lam, mot, v sft-sft, sb
ply-bkly, v calc, crptxl, intbd w/mari; MARL:
med-dk gy, stri, sft-v sft, sb ply-ply, frt- brt, sil; rr
cal

CHK: lt-med gy, some brn, lam, mot, v sft-sft, sb
ply-bkly, v calc, crptxl, intbd w/mari; MARL:
med-dk gy, stri, sft-v sft, sb ply-ply, frt- brt, sil; rr
cal







MD: 12,207'
TV/D: 6,128.83'
Inclination: 89.7°
Azimuth: 90.9°
VS: 6,029.32'

MD: 12,299'
TV/D: 6,129.55'
Inclination: 89.4°
Azimuth: 91.3°
VS: 6,121.26'

MD: 12,391'
TV/D: 6,130.67'
Inclination: 89.2°
Azimuth: 91.5°
VS: 6,213.17'

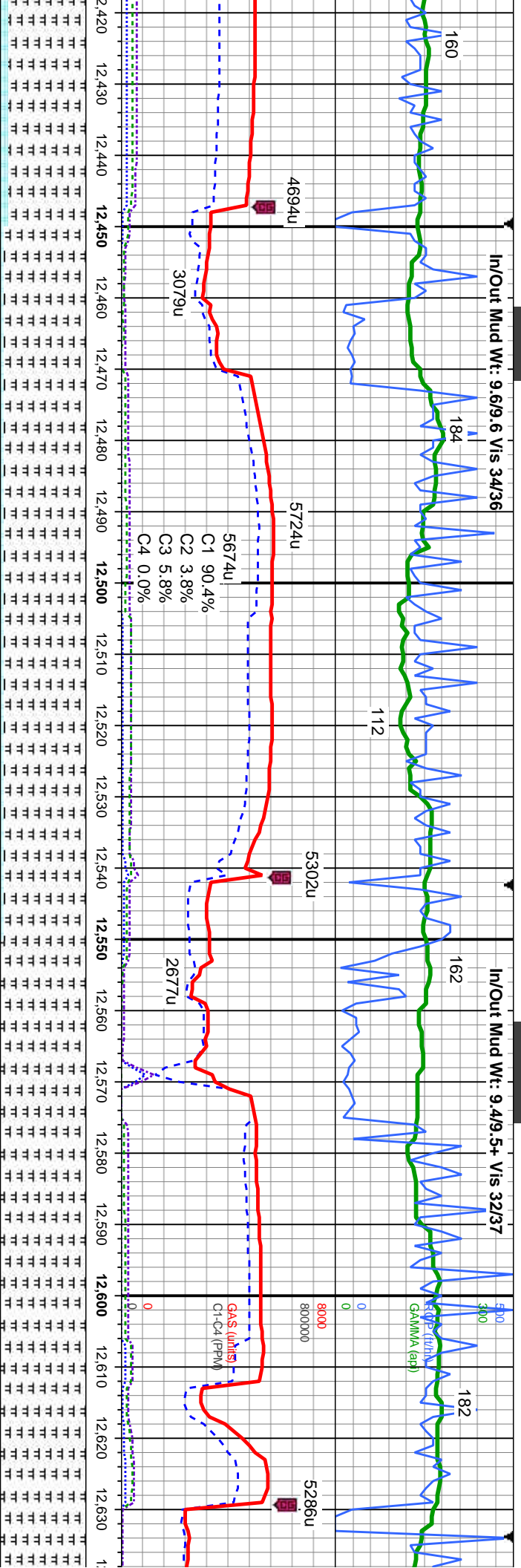
CHK: lt-med gy, some brn, lam, mot, v sft-sft, sb
ply-bkly, v calc, crptxl, intbd w/mari; MARL:
med-dk gy, stri, sft-v sft, sb ply-ply, fri- brt, sil; rr
cal
o2u0

CHK: lt-med gy, some brn, lam, mot, v sft-sft, sb
ply-bkly, v calc, crptxl, intbd w/mari; MARL:
med-dk gy, stri, sft-v sft, sb ply-ply, fri- brt, sil; rr
cal

CHK: lt-med gy, some brn, lam, mot, v sft-sft, sb
ply-bkly, v calc, crptxl, intbd w/mari; MARL:
med-dk gy, stri, sft-v sft, sb ply-ply, fri- brt, sil; rr
cal

CHK: lt-med gy, some brn, lam, mot, v sft-sft, sb
ply-bkly, v calc, crptxl, intbd w/mari; MARL:
med-dk gy, stri, sft-v sft, sb ply-ply, fri- brt, sil; rr
cal
o2u0





MD: 12,483'
TVD: 6,131.72'
Inclination: 89.5°
Azimuth: 92.3°
VS: 6,305.05'

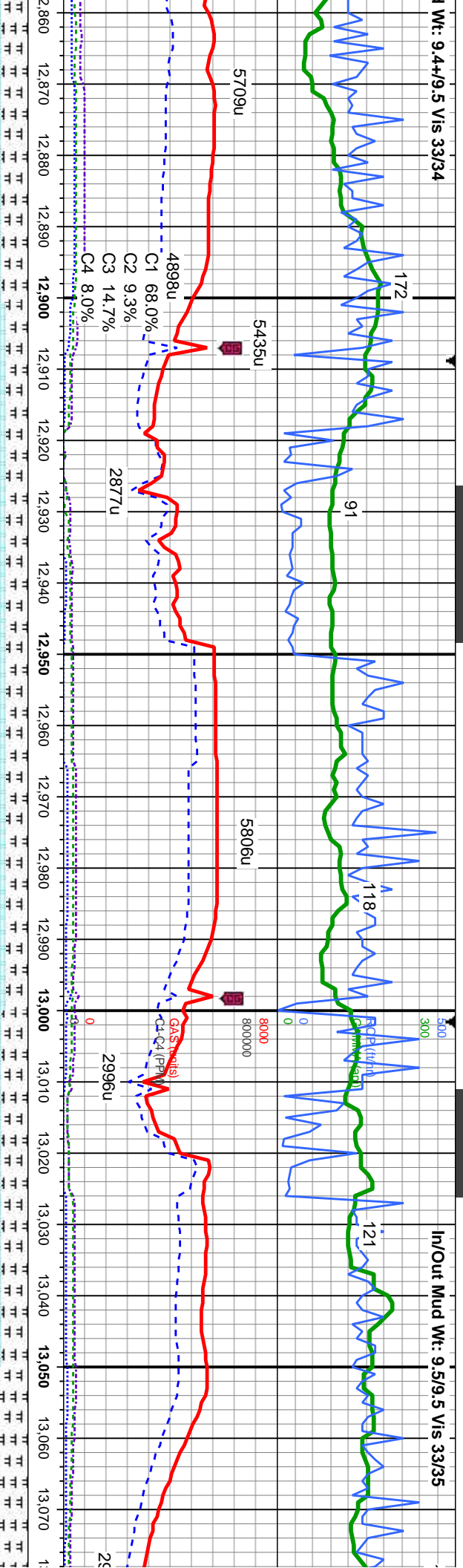
MD: 12,575'
TVD: 6,132.6'
Inclination: 89.4°
Azimuth: 90.3°
VS: 6,396.97'

ne brn, lam, mot, v sft-sft, sb	CHK: lt-med gy, some brn, lam, mot, v sft-sft, sb	CHK: lt-med gy, some brn, lam, mot, v sft-sft, sb	MARL: med-dk gy, stri, sft-v sft, sb pily-pily, frt- brt,
tbl, intbd w/mari; MARL:	pily-biky, v calc, crptxl, intbd w/mari; MARL:	pily-biky, v calc, crptxl, intbd w/mari; MARL:	sil, rr cal, rr bent, rr inoc
sft, sb pily-pily, frt- brt, sil, rr	med-dk gy, stri, sft-v sft, sb pily-pily, frt- brt, sil, rr	med-dk gy, stri, sft-v sft, sb pily-pily, frt- brt, sil, rr	MARL: med-dk gy, stri, sft-v sft, sb pily-pily, frt- brt,
	cal, rr bent	cal, rr bent	sil, rr cal, rr bent, rr inoc

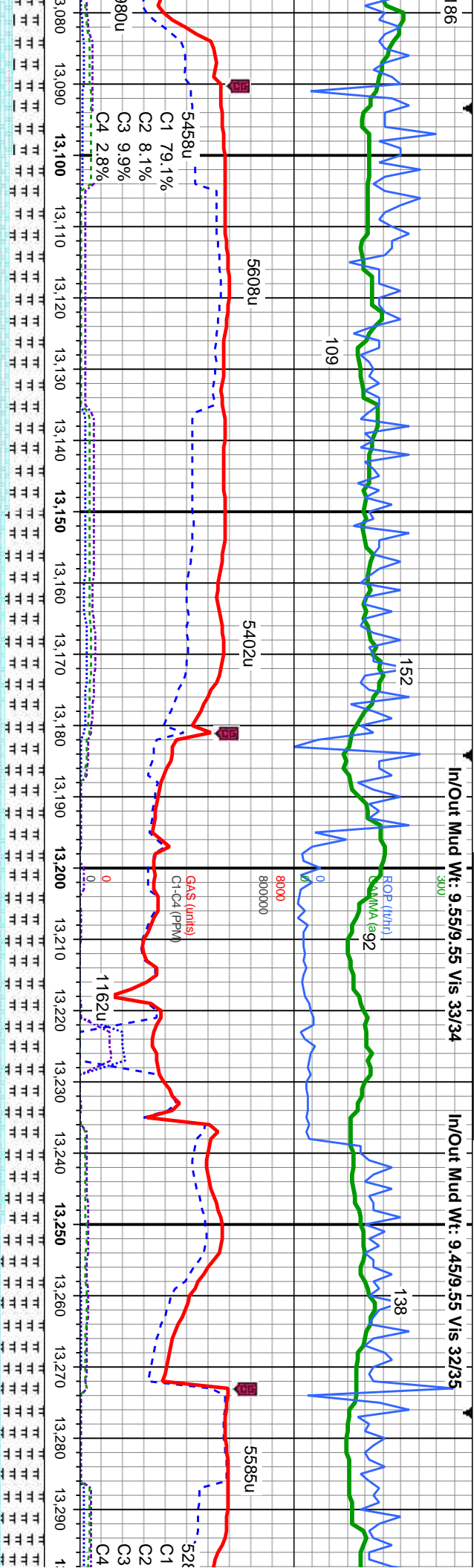


Wt: 9.4+/9.5 Vis 33/34

In/Out Mud Wt: 9.5/9.5 Vis 33/35



med gy, some brn, lam, mot, v sft-sft, sb v calc, crpxl, intbd w/mar; MARL: gy, stri, sft-v sft, sb ply-ply, fr- brt, sli; rr	MD: 12,942' TV D: 6,133.4' Inclination: 90.6° Azimuth: 89° VS: 6,763.95'	CHK: lt-med gy, some brn, lam, mot, v sft-sft, sb ply-bkly, v calc, crpxl, intbd w/mar; MARL: med-dk gy, stri, sft-v sft, sb ply-ply, fr- brt, sli; rr cal	CHK: lt-med gy, some brn, lam, mot, v sft-sft, sb ply-bkly, v calc, crpxl, intbd w/mar; MARL: med-dk gy, stri, sft-v sft, sb ply-ply, fr- brt, sli; rr cal	TV D (ft)	MD: 13,034' TV D: 6,132.2' Inclination: 90.9° Azimuth: 88.7° VS: 6,855.94'	CHK: lt-med gy, some brn, lam, mot, v sft-sft, sb ply-bkly, v calc, crpxl, intbd w/mar; MARL: med-dk gy, stri, sft-v sft, sb ply-ply, fr- brt, sli; rr cal	CHK: lt-med gy, some brn, lam, mot, v sft-sft, sb ply-bkly, v calc, crpxl, intbd w/mar; MARL: med-dk gy, stri, sft-v sft, sb ply-ply, fr- brt, sli; rr cal
---	--	---	---	-----------	--	---	---



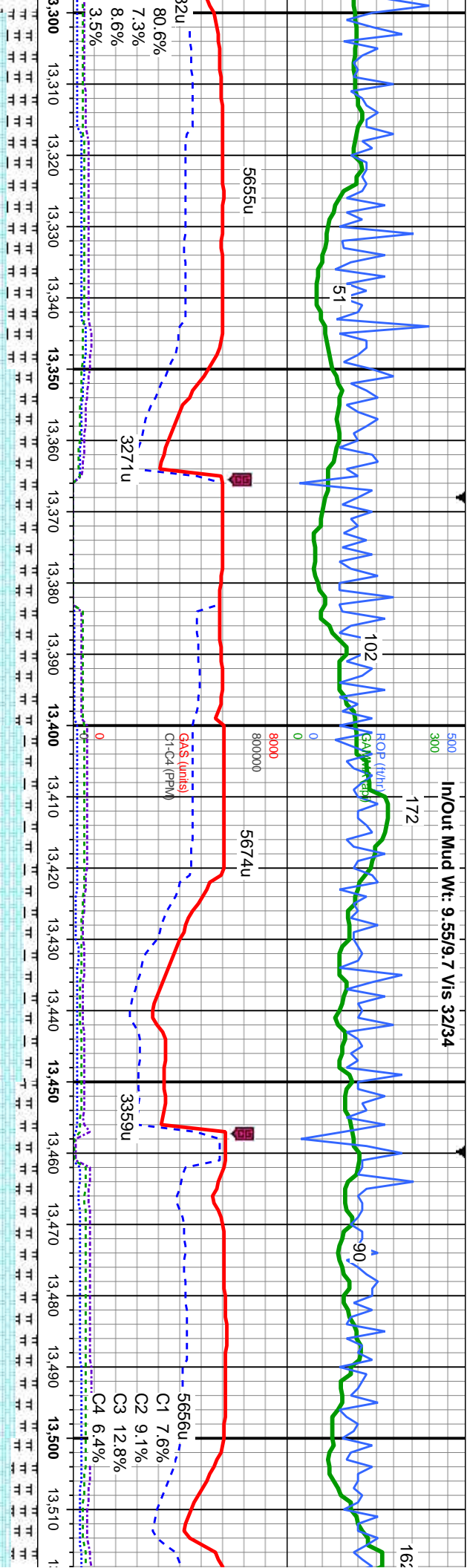
MD: 13,125'
TVD: 6,131.08'
Inclination: 90.5 °
Azimuth: 88.6 °
VS: 6,946.93'

MD: 13,217'
TVD: 6,129.96'
Inclination: 90.9 °
Azimuth: 87.7 °
VS: 7,038.91'

mot, v sft-sft, sb	CHK: lt-med gy, some brn, lam, mot, v sft-sft, sb	CHK: lt-med gy, some brn, lam, mot, v sft-sft, sb	CHK: lt-med gy, some brn, lam, mot, v sft-sft, sb
mani; MARL:	ply-bkly, v calc, crpxl, intbd w/mani; MARL:	ply-bkly, v calc, crpxl, intbd w/mani; MARL:	ply-bkly, v calc, crpxl, intbd w/mani; MARL:
-ply, frt- brt, sli; rr	med-dk gy, strl, sft-v sft, sb ply-ply, frt- brt, sli; rr	med-dk gy, strl, sft-v sft, sb ply-ply, frt- brt, sli; rr	med-dk gy, strl, sft-v sft, sb ply-ply, frt- brt, sli; rr
	cal	cal	cal

25' Fault





MD: 13,308'
TVD: 6,128.21'
Inclination: 91.3°
Azimuth: 87.9°
VS: 7,129.87'

MD: 13,400'
TVD: 6,126.45'
Inclination: 90.9°
Azimuth: 88.2°
VS: 7,221.84'

MD: 13,492'
TVD: 6,125.48'
Inclination: 90.3°
Azimuth: 88.3°
VS: 7,313.83'

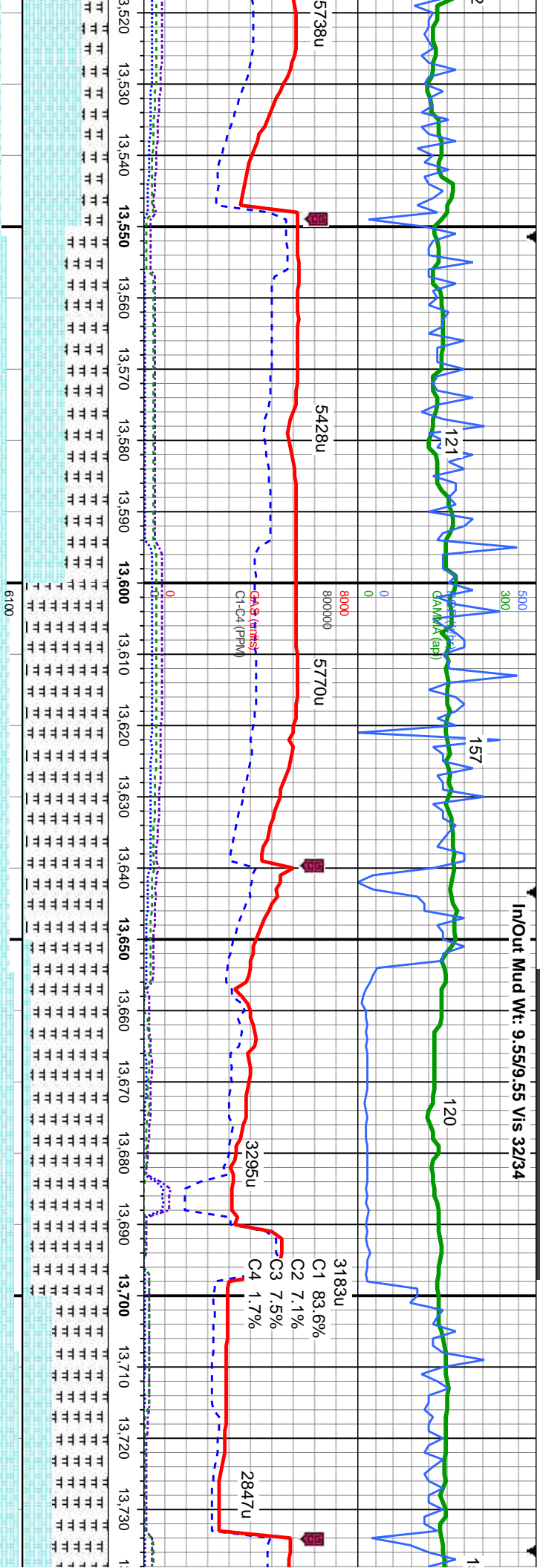
CHK: It-med gy, some brn, lam, mot, v sft-sft, sb
ply-bkly, v calc, crpxl, intbd w/mari; MARL:
med-dk gy, stri, sft-v sft, sb ply-ply, frt- brt, sli; rr
cal

CHK: It-med gy, some brn, lam, mot, v sft-sft, sb
ply-bkly, v calc, crpxl, intbd w/mari; MARL:
med-dk gy, stri, sft-v sft, sb ply-ply, frt- brt, sli; rr
cal

CHK: It-med gy, some brn, lam, mot, v sft-sft, sb
ply-bkly, v calc, crpxl, intbd w/mari; MARL:
med-dk gy, stri, sft-v sft, sb ply-ply, frt- brt, sli; rr
cal



In/Out Mud Wt: 9.55/9.55 Vis 32/34



MD: 13,584'
TVD: 6,125.4'
Inclination: 89.8°
Azimuth: 88.9°
VS: 7,405.82'

TVD (ft)

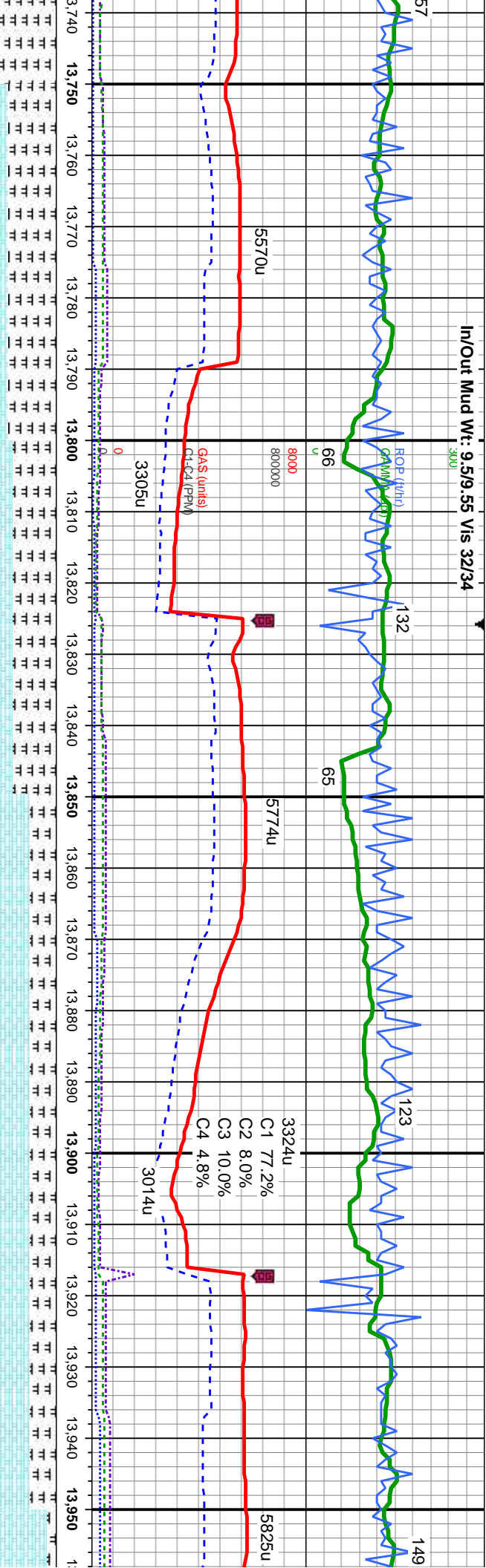
CHK: It-med gy, some brn, lam, mot, v sft-sft, sb
ply-bkly, v calc, cpxl, intbd w/mari; MARL:
med-dk gy, stri, sft-v sft, sb ply-ply, fri-brt, sli; rr
cal

MD: 13,676'
TVD: 6,125.73'
Inclination: 89.8°
Azimuth: 87.6°
VS: 7,497.81'

CHK: It-med gy, some brn, lam, mot, v sft-sft, sb
ply-bkly, v calc, cpxl, intbd w/mari; MARL:
med-dk gy, stri, sft-v sft, sb ply-ply, fri-brt, sli; rr
cal

CHK: It-med gy, some brn, lam, mot, v sft-sft, sb
ply-bkly, v calc, cpxl, intbd w/mari; MARL:
med-dk gy, stri, sft-v sft, sb ply-ply, fri-brt, sli; rr
cal

In/Out Mud Wt: 9.5/9.55 Vis 32/34



MD: 13,768'
TVD: 6,125'
Inclination: 91.1°
Azimuth: 87.6°
VS: 7,589.78'

CHK: It-med gy, some brn, lam, mot, v sft-sft, sb
ply-biky, v calc, crpxl, intbd w/marl; MARL:
med-dk gy, stri, sft-v sft, sb ply-ply, fr- brt, sil; rr
cal

TVD (ft)

CHK: It-med gy, some brn, lam, mot, v sft-sft, sb
ply-biky, v calc, crpxl, intbd w/marl; MARL:
med-dk gy, stri, sft-v sft, sb ply-ply, fr- brt, sil; rr
cal

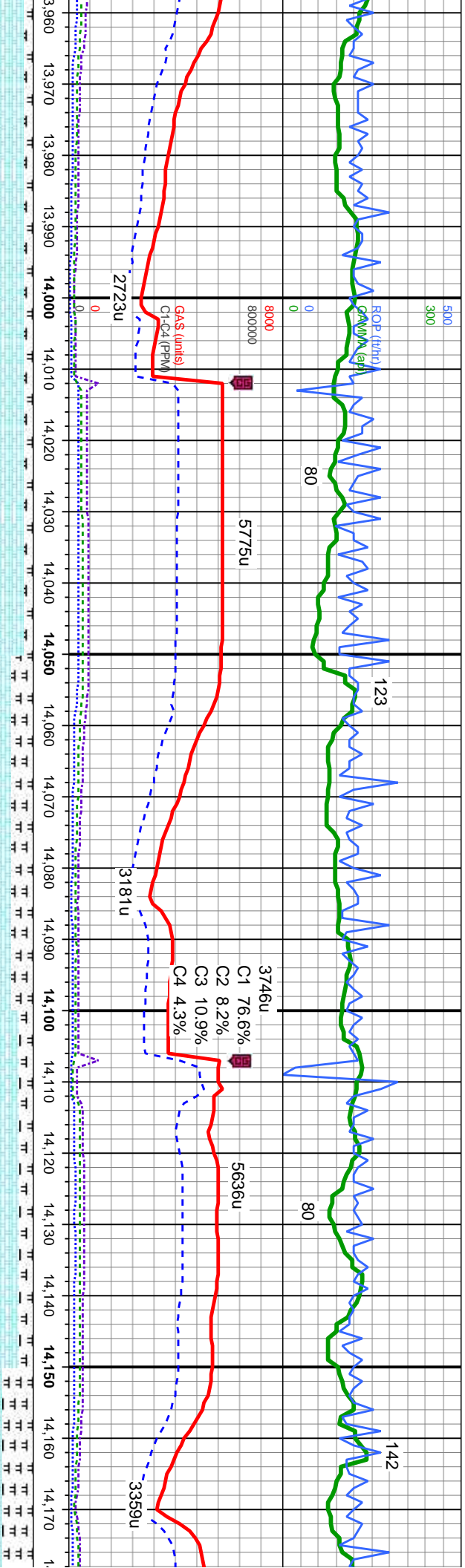
MD: 13,860'
TVD: 6,123.48'
Inclination: 90.8°
Azimuth: 88.6°
VS: 7,681.75'

CHK: It-med gy, some brn, lam, mot, v sft-sft, sb
ply-biky, v calc, crpxl, intbd w/marl; MARL:
med-dk gy, stri, sft-v sft, sb ply-ply, fr- brt, sil; rr
cal

CHK: It-med gy, some brn, lam, mot, v sft-sft, sb
ply-biky, v calc, crpxl, intbd w/marl; MARL:
med-dk gy, stri, sft-v sft, sb ply-ply, fr- brt, sil; rr
cal

MD: 13,950'
TVD: 6,123'
Inclination: 89.8°
Azimuth: 87.6°
VS: 7,776'

CHK: It-med gy, some brn, lam, mot, v sft-sft, sb
ply-biky, v calc, crpxl, intbd w/marl; MARL:
med-dk gy, stri, sft-v sft, sb ply-ply, fr- brt, sil; rr
cal



6100

5'
3.15'
89.6°
8.5°
75'

TVD (ft)

med gy, some brn, lam, mot, v sft-sft, sb
ply-bkly, v calc, crpxl, intbd w/marl; MARL:
v calc, crpxl, intbd w/marl; MARL:
sft, sft-v sft, sb ply-ply, frt- brt, sil; rr

CHK: lt-med gy, some brn, lam, mot, v sft-sft, sb
ply-bkly, v calc, crpxl, intbd w/marl; MARL:
med-dk gy, sft, sft-v sft, sb ply-ply, frt- brt, sil; rr
cal
o2u0

MD: 14,051'
TVD: 6,124.74'
Inclination: 88.5°
Azimuth: 88.6°
VS: 7,872.73'

CHK: lt-med gy, some brn, lam, mot, v sft-sft, sb
ply-bkly, v calc, crpxl, intbd w/marl; MARL:
med-dk gy, sft, sft-v sft, sb ply-ply, frt- brt, sil; rr
cal

CHK: lt-med gy, some brn, lam, mot, v sft-sft, sb
ply-bkly, v calc, crpxl, intbd w/marl; MARL:
med-dk gy, sft, sft-v sft, sb ply-ply, frt- brt, sil; rr
cal

MD: 14,146'
TVD: 6,127.97'
Inclination: 87.6°
Azimuth: 88.3°
VS: 7,967.67'

CHK: lt-med gy, some brn, lam,
ply-bkly, v calc, crpxl, intbd w/
med-dk gy, sft, sft-v sft, sb ply-

