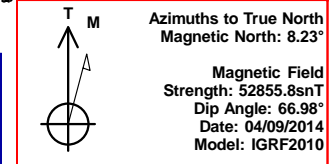
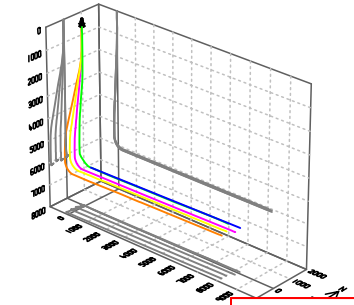




Bill Barrett Corp.  
 Project: Weld Co., CO  
 Site: Sec.2-T4N-R62W  
 Well: Anschutz State 4-62-2-1721BH2  
 Wellbore: Wellbore #1  
 Design: Design #5  
 Lat: 40° 20' 41.071 N  
 Long: 104° 18' 6.170 W  
 Pad GL: 4544.00  
 KB: Well @ 4566.00usft

# Archer



### SECTION DETAILS

MD	Inc	Azi	TVD	+N/-S	+E/-W	Dleg	TFace	VSec	Annotation
6470.00	91.50	91.30	6120.87	-2.56	353.74	0.00	0.00	353.66	Start 200.00 hold at 6470.00 MD
6670.00	91.50	91.30	6115.63	-7.10	553.62	0.00	0.00	553.45	Start DLS 2.00 TFO -116.01
6790.98	90.44	89.13	6113.58	-7.55	674.57	2.00	-116.01	674.38	Start 7529.17 hold at 6790.98 MD
14320.15	90.44	89.13	6056.00	107.37	8202.65	0.00	0.00	8203.33	TD at 14320.15

### WELL DETAILS: Anschutz State 4-62-2-1721BH2

+N/-S	+E/-W	Northing	Ground Level:	4544.00	Latitude	Longitude	Slot
0.00	0.00	1370686.920	Easting	3333996.920	40° 20' 41.071 N	104° 18' 6.170 W	

### PROJECT DETAILS: Weld Co., CO

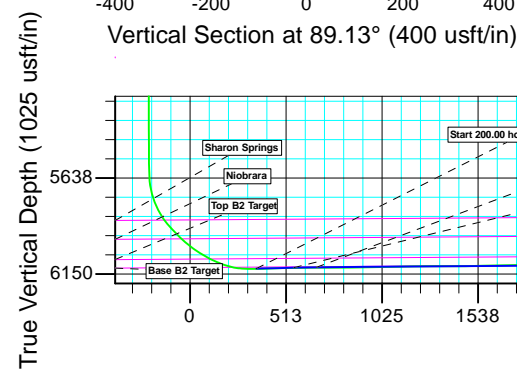
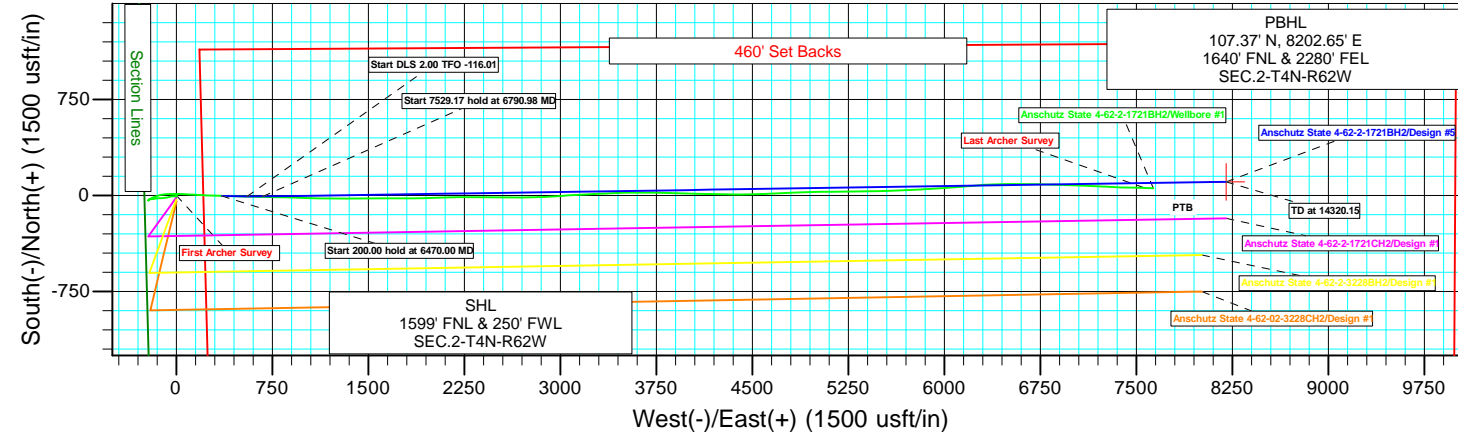
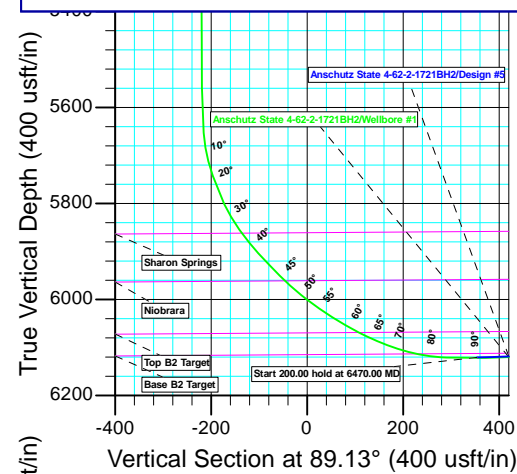
Geodetic System: US State Plane 1983  
 Datum: North American Datum 1983  
 Ellipsoid: GRS 1980  
 Zone: Colorado Northern Zone  
 System Datum: Mean Sea Level

### CASING DETAILS

TVD	MD	Name
	800.00	9 5/8" Csg.
	6398.07	7" Csg.

### WELLBORE TARGET DETAILS (LAT/LONG)

Name	TVD	+N/-S	+E/-W	Latitude	Longitude	Shape
Anschutz State 4-62-2-1721BH2	6056.00	107.37	8202.65	40° 20' 42.119 N	104° 16' 20.230 W	Point





**Bill Barrett Corporation**

## **Bill Barrett Corp.**

Weld Co., CO

Sec.2-T4N-R62W

Anschutz State 4-62-2-1721BH2

Wellbore #1

Survey: Survey #1

## **Standard Survey Report**

03 July, 2014

# **Archer**

<b>Company:</b>	Bill Barrett Corp.	<b>Local Co-ordinate Reference:</b>	Well Anschutz State 4-62-2-1721BH2
<b>Project:</b>	Weld Co., CO	<b>TVD Reference:</b>	Well @ 4566.00usft
<b>Site:</b>	Sec.2-T4N-R62W	<b>MD Reference:</b>	Well @ 4566.00usft
<b>Well:</b>	Anschutz State 4-62-2-1721BH2	<b>North Reference:</b>	True
<b>Wellbore:</b>	Wellbore #1	<b>Survey Calculation Method:</b>	Minimum Curvature
<b>Design:</b>	Wellbore #1	<b>Database:</b>	EDMDBBW

<b>Project</b>	Weld Co., CO		
<b>Map System:</b>	US State Plane 1983	<b>System Datum:</b>	Mean Sea Level
<b>Geo Datum:</b>	North American Datum 1983		
<b>Map Zone:</b>	Colorado Northern Zone		

<b>Site</b>	Sec.2-T4N-R62W				
<b>Site Position:</b>		<b>Northing:</b>	1,370,686.920 usft	<b>Latitude:</b>	40° 20' 41.071 N
<b>From:</b>	Lat/Long	<b>Easting:</b>	3,333,996.920 usft	<b>Longitude:</b>	104° 18' 6.170 W
<b>Position Uncertainty:</b>	0.00 usft	<b>Slot Radius:</b>	13-3/16"	<b>Grid Convergence:</b>	0.77 °

<b>Well</b>	Anschutz State 4-62-2-1721BH2					
<b>Well Position</b>	<b>+N/-S</b>	0.00 usft	<b>Northing:</b>	1,370,686.920 usft	<b>Latitude:</b>	40° 20' 41.071 N
	<b>+E/-W</b>	0.00 usft	<b>Easting:</b>	3,333,996.920 usft	<b>Longitude:</b>	104° 18' 6.170 W
<b>Position Uncertainty</b>		0.00 usft	<b>Wellhead Elevation:</b>	usft	<b>Ground Level:</b>	4,544.00 usft

<b>Wellbore</b>	Wellbore #1				
<b>Magnetics</b>	<b>Model Name</b>	<b>Sample Date</b>	<b>Declination (°)</b>	<b>Dip Angle (°)</b>	<b>Field Strength (nT)</b>
	IGRF2010	2014/04/09	8.23	66.98	52,856

<b>Design</b>	Wellbore #1				
<b>Audit Notes:</b>					
<b>Version:</b>	1.0	<b>Phase:</b>	ACTUAL	<b>Tie On Depth:</b>	0.00
<b>Vertical Section:</b>	<b>Depth From (TVD) (usft)</b>	<b>+N/-S (usft)</b>	<b>+E/-W (usft)</b>	<b>Direction (°)</b>	
	0.00	0.00	0.00	89.04	

<b>Survey Program</b>	<b>Date</b>	2014/05/16			
<b>From (usft)</b>	<b>To (usft)</b>	<b>Survey (Wellbore)</b>	<b>Tool Name</b>	<b>Description</b>	
100.00	13,756.00	Survey #1 (Wellbore #1)	MWD	MWD - Standard	

<b>Survey</b>										
<b>Measured Depth (usft)</b>	<b>Inclination (°)</b>	<b>Azimuth (°)</b>	<b>Vertical Depth (usft)</b>	<b>+N/-S (usft)</b>	<b>+E/-W (usft)</b>	<b>Vertical Section (usft)</b>	<b>Dogleg Rate (°/100usft)</b>	<b>Build Rate (°/100usft)</b>	<b>Turn Rate (°/100usft)</b>	
0.00	0.00	0.00	0.00	0.00	0.00	0.00	0.00	0.00	0.00	0.00
<b>First Archer Survey</b>										
100.00	0.55	224.24	100.00	-0.34	-0.33	-0.34	0.55	0.55	0.00	
200.00	0.43	120.11	200.00	-0.88	-0.35	-0.36	0.78	-0.12	-104.13	
300.00	0.44	323.70	300.00	-0.75	-0.25	-0.26	0.85	0.01	-156.41	
400.00	0.39	199.87	399.99	-0.77	-0.59	-0.60	0.73	-0.05	-123.83	
500.00	0.63	126.11	499.99	-1.41	-0.26	-0.29	0.64	0.24	-73.76	
600.00	0.43	12.74	599.99	-1.37	0.26	0.24	0.89	-0.20	-113.37	
700.00	0.40	232.45	699.99	-1.21	0.07	0.05	0.78	-0.03	-140.29	
735.00	0.62	212.45	734.99	-1.45	-0.13	-0.15	0.80	0.63	-57.14	
871.00	0.40	111.20	870.98	-2.24	-0.08	-0.12	0.59	-0.16	-74.45	
962.00	0.40	109.00	961.98	-2.46	0.52	0.48	0.02	0.00	-2.42	
1,054.00	0.40	95.50	1,053.98	-2.59	1.14	1.10	0.10	0.00	-14.67	

<b>Company:</b>	Bill Barrett Corp.	<b>Local Co-ordinate Reference:</b>	Well Anschutz State 4-62-2-1721BH2
<b>Project:</b>	Weld Co., CO	<b>TVD Reference:</b>	Well @ 4566.00usft
<b>Site:</b>	Sec.2-T4N-R62W	<b>MD Reference:</b>	Well @ 4566.00usft
<b>Well:</b>	Anschutz State 4-62-2-1721BH2	<b>North Reference:</b>	True
<b>Wellbore:</b>	Wellbore #1	<b>Survey Calculation Method:</b>	Minimum Curvature
<b>Design:</b>	Wellbore #1	<b>Database:</b>	EDMDBBW

Survey											
Measured Depth (usft)	Inclination (°)	Azimuth (°)	Vertical Depth (usft)	+N/-S (usft)	+E/-W (usft)	Vertical Section (usft)	Dogleg Rate (°/100usft)	Build Rate (°/100usft)	Turn Rate (°/100usft)		
1,146.00	0.50	123.60	1,145.98	-2.85	1.79	1.75	0.26	0.11	30.54		
1,238.00	0.40	134.50	1,237.97	-3.29	2.36	2.30	0.14	-0.11	11.85		
1,329.00	0.40	146.40	1,328.97	-3.78	2.76	2.70	0.09	0.00	13.08		
1,421.00	0.40	163.40	1,420.97	-4.36	3.03	2.96	0.13	0.00	18.48		
1,513.00	0.40	196.60	1,512.97	-4.97	3.03	2.95	0.25	0.00	36.09		
1,605.00	0.70	201.90	1,604.96	-5.80	2.73	2.63	0.33	0.33	5.76		
1,697.00	0.70	185.30	1,696.95	-6.88	2.47	2.35	0.22	0.00	-18.04		
1,789.00	0.80	184.80	1,788.95	-8.08	2.36	2.22	0.11	0.11	-0.54		
1,881.00	1.80	283.80	1,880.93	-8.38	0.90	0.76	2.26	1.09	107.61		
1,973.00	1.70	274.60	1,972.89	-7.92	-1.86	-1.99	0.32	-0.11	-10.00		
2,065.00	1.60	274.10	2,064.85	-7.72	-4.50	-4.63	0.11	-0.11	-0.54		
2,157.00	3.70	278.50	2,156.75	-7.19	-8.72	-8.84	2.29	2.28	4.78		
2,248.00	3.40	276.90	2,247.57	-6.43	-14.30	-14.41	0.35	-0.33	-1.76		
2,340.00	5.60	275.90	2,339.28	-5.64	-21.48	-21.57	2.39	2.39	-1.09		
2,435.00	6.20	268.70	2,433.78	-5.28	-31.22	-31.30	1.00	0.63	-7.58		
2,530.00	6.50	253.70	2,528.20	-6.91	-41.51	-41.62	1.77	0.32	-15.79		
2,625.00	6.90	248.70	2,622.55	-10.49	-51.98	-52.15	0.74	0.42	-5.26		
2,720.00	6.00	258.00	2,716.96	-13.60	-62.16	-62.38	1.45	-0.95	9.79		
2,815.00	5.40	262.00	2,811.49	-15.25	-71.44	-71.69	0.76	-0.63	4.21		
2,911.00	4.70	262.40	2,907.11	-16.40	-79.81	-80.08	0.73	-0.73	0.42		
3,006.00	4.60	267.30	3,001.80	-17.10	-87.48	-87.75	0.43	-0.11	5.16		
3,101.00	5.10	260.00	3,096.46	-18.01	-95.44	-95.73	0.84	0.53	-7.68		
3,196.00	5.20	262.50	3,191.08	-19.30	-103.87	-104.18	0.26	0.11	2.63		
3,291.00	5.10	266.70	3,285.69	-20.11	-112.35	-112.67	0.41	-0.11	4.42		
3,386.00	5.50	269.10	3,380.29	-20.42	-121.12	-121.44	0.48	0.42	2.53		
3,480.00	5.80	265.90	3,473.83	-20.83	-130.36	-130.69	0.46	0.32	-3.40		
3,575.00	5.80	266.40	3,568.34	-21.48	-139.94	-140.28	0.05	0.00	0.53		
3,670.00	5.30	259.90	3,662.90	-22.55	-149.05	-149.41	0.84	-0.53	-6.84		
3,766.00	5.00	263.30	3,758.51	-23.81	-157.57	-157.95	0.45	-0.31	3.54		
3,860.00	4.40	268.00	3,852.20	-24.42	-165.24	-165.63	0.76	-0.64	5.00		
3,956.00	4.70	263.90	3,947.89	-24.96	-172.83	-173.23	0.46	0.31	-4.27		
4,051.00	4.30	256.70	4,042.60	-26.20	-180.17	-180.58	0.73	-0.42	-7.58		
4,145.00	4.10	259.10	4,136.35	-27.64	-186.90	-187.33	0.28	-0.21	2.55		
4,240.00	3.60	265.00	4,231.13	-28.55	-193.20	-193.65	0.67	-0.53	6.21		
4,335.00	3.40	267.40	4,325.96	-28.93	-198.99	-199.45	0.26	-0.21	2.53		
4,429.00	3.20	264.50	4,419.80	-29.31	-204.38	-204.85	0.28	-0.21	-3.09		
4,524.00	3.00	255.10	4,514.66	-30.20	-209.43	-209.90	0.57	-0.21	-9.89		
4,619.00	1.80	209.60	4,609.59	-32.14	-212.57	-213.07	2.27	-1.26	-47.89		
4,714.00	1.80	197.50	4,704.54	-34.86	-213.75	-214.31	0.40	0.00	-12.74		
4,809.00	0.90	247.10	4,799.51	-36.57	-214.89	-215.47	1.47	-0.95	52.21		
4,904.00	1.10	248.30	4,894.50	-37.20	-216.42	-217.01	0.21	0.21	1.26		
4,999.00	0.70	251.70	4,989.49	-37.72	-217.82	-218.42	0.42	-0.42	3.58		
5,094.00	0.40	255.50	5,084.48	-37.99	-218.69	-219.30	0.32	-0.32	4.00		
5,189.00	0.20	234.70	5,179.48	-38.17	-219.15	-219.76	0.24	-0.21	-21.89		
5,283.00	0.10	341.40	5,273.48	-38.18	-219.31	-219.92	0.26	-0.11	113.51		
5,378.00	0.40	28.20	5,368.48	-37.81	-219.18	-219.78	0.36	0.32	49.26		
5,473.00	0.40	16.10	5,463.48	-37.20	-218.93	-219.52	0.09	0.00	-12.74		
5,568.00	0.50	26.40	5,558.48	-36.51	-218.65	-219.23	0.13	0.11	10.84		
5,663.00	5.40	50.20	5,653.32	-33.28	-215.03	-215.56	5.21	5.16	25.05		
5,694.00	11.10	59.00	5,683.99	-30.80	-211.35	-211.84	18.78	18.39	28.39		
5,723.00	16.40	62.00	5,712.15	-27.44	-205.34	-205.77	18.43	18.28	10.34		
5,755.00	20.60	63.30	5,742.49	-22.79	-196.32	-196.67	13.19	13.12	4.06		
5,820.00	27.80	64.50	5,801.74	-11.11	-172.39	-172.55	11.10	11.08	1.85		
5,850.00	31.90	70.30	5,827.76	-5.42	-158.60	-158.67	16.70	13.67	19.33		

<b>Company:</b>	Bill Barrett Corp.	<b>Local Co-ordinate Reference:</b>	Well Anschutz State 4-62-2-1721BH2
<b>Project:</b>	Weld Co., CO	<b>TVD Reference:</b>	Well @ 4566.00usft
<b>Site:</b>	Sec.2-T4N-R62W	<b>MD Reference:</b>	Well @ 4566.00usft
<b>Well:</b>	Anschutz State 4-62-2-1721BH2	<b>North Reference:</b>	True
<b>Wellbore:</b>	Wellbore #1	<b>Survey Calculation Method:</b>	Minimum Curvature
<b>Design:</b>	Wellbore #1	<b>Database:</b>	EDMDBBW

Survey										
Measured Depth (usft)	Inclination (°)	Azimuth (°)	Vertical Depth (usft)	+N/-S (usft)	+E/-W (usft)	Vertical Section (usft)	Dogleg Rate (°/100usft)	Build Rate (°/100usft)	Turn Rate (°/100usft)	
5,883.00	36.50	73.90	5,855.05	0.24	-140.95	-140.93	15.22	13.94	10.91	
5,917.00	40.00	77.70	5,881.75	5.38	-120.55	-120.45	12.40	10.29	11.18	
5,946.00	41.80	81.90	5,903.67	8.72	-101.87	-101.71	11.33	6.21	14.48	
5,980.00	43.90	87.00	5,928.60	10.94	-78.87	-78.68	11.92	6.18	15.00	
6,011.00	45.20	89.90	5,950.70	11.52	-57.14	-56.94	7.79	4.19	9.35	
6,041.00	47.50	89.90	5,971.40	11.56	-35.43	-35.23	7.67	7.67	0.00	
6,071.00	50.90	90.10	5,991.00	11.56	-12.73	-12.53	11.34	11.33	0.67	
6,104.00	54.00	89.80	6,011.11	11.58	13.43	13.63	9.42	9.39	-0.91	
6,133.00	57.00	89.90	6,027.54	11.64	37.33	37.52	10.35	10.34	0.34	
6,167.00	58.90	91.20	6,045.58	11.36	66.14	66.33	6.46	5.59	3.82	
6,198.00	61.10	93.30	6,061.08	10.30	92.97	93.13	9.21	7.10	6.77	
6,230.00	64.40	94.30	6,075.73	8.42	121.35	121.47	10.68	10.31	3.12	
6,276.00	68.70	94.50	6,094.03	5.18	163.41	163.48	9.36	9.35	0.43	
6,323.00	75.10	93.20	6,108.63	2.19	207.96	207.97	13.87	13.62	-2.77	
6,381.00	83.70	92.00	6,119.29	-0.39	264.86	264.82	14.97	14.83	-2.07	
6,407.00	87.60	91.30	6,121.26	-1.13	290.77	290.71	15.24	15.00	-2.69	
6,489.00	91.90	91.60	6,121.61	-3.21	372.72	372.62	5.26	5.24	0.37	
6,581.00	91.60	91.60	6,118.80	-5.77	464.65	464.48	0.33	-0.33	0.00	
6,672.00	91.30	91.70	6,116.50	-8.39	555.58	555.36	0.35	-0.33	0.11	
6,764.00	90.00	91.20	6,115.46	-10.72	647.54	647.27	1.51	-1.41	-0.54	
6,856.00	89.50	90.50	6,115.86	-12.09	739.53	739.22	0.94	-0.54	-0.76	
6,948.00	91.00	91.60	6,115.46	-13.77	831.51	831.16	2.02	1.63	1.20	
7,038.00	90.90	91.60	6,113.97	-16.28	921.46	921.06	0.11	-0.11	0.00	
7,130.00	90.80	91.60	6,112.60	-18.85	1,013.42	1,012.96	0.11	-0.11	0.00	
7,222.00	91.80	92.10	6,110.51	-21.82	1,105.34	1,104.82	1.22	1.09	0.54	
7,314.00	90.70	89.90	6,108.51	-23.43	1,197.30	1,196.74	2.67	-1.20	-2.39	
7,405.00	90.20	90.10	6,107.79	-23.43	1,288.30	1,287.72	0.59	-0.55	0.22	
7,496.00	89.70	90.00	6,107.87	-23.51	1,379.30	1,378.71	0.56	-0.55	-0.11	
7,589.00	91.00	89.50	6,107.30	-23.10	1,472.29	1,471.70	1.50	1.40	-0.54	
7,682.00	91.40	89.90	6,105.36	-22.61	1,565.27	1,564.67	0.61	0.43	0.43	
7,773.00	91.10	89.80	6,103.37	-22.38	1,656.25	1,655.64	0.35	-0.33	-0.11	
7,865.00	90.90	90.10	6,101.77	-22.30	1,748.23	1,747.61	0.39	-0.22	0.33	
7,956.00	90.50	89.50	6,100.65	-21.98	1,839.22	1,838.60	0.79	-0.44	-0.66	
8,048.00	90.20	88.40	6,100.09	-20.29	1,931.21	1,930.59	1.24	-0.33	-1.20	
8,197.00	90.90	88.90	6,098.66	-16.78	2,080.16	2,079.58	0.58	0.47	0.34	
8,231.00	91.30	88.70	6,098.01	-16.07	2,114.14	2,113.58	1.32	1.18	-0.59	
8,323.00	89.40	89.30	6,097.45	-14.46	2,206.12	2,205.57	2.17	-2.07	0.65	
8,416.00	89.00	88.90	6,098.75	-13.00	2,299.10	2,298.56	0.61	-0.43	-0.43	
8,508.00	89.00	90.40	6,100.35	-12.44	2,391.08	2,390.54	1.63	0.00	1.63	
8,600.00	90.20	90.40	6,100.99	-13.08	2,483.08	2,482.51	1.30	1.30	0.00	
8,691.00	91.10	90.90	6,099.96	-14.12	2,574.06	2,573.47	1.13	0.99	0.55	
8,783.00	90.10	89.60	6,099.00	-14.52	2,666.05	2,665.44	1.78	-1.09	-1.41	
8,875.00	90.80	90.20	6,098.27	-14.36	2,758.05	2,757.42	1.00	0.76	0.65	
8,966.00	90.50	88.10	6,097.24	-13.01	2,849.03	2,848.41	2.33	-0.33	-2.31	
9,058.00	90.50	86.40	6,096.44	-8.59	2,940.92	2,940.36	1.85	0.00	-1.85	
9,151.00	89.90	84.80	6,096.11	-1.46	3,033.64	3,033.19	1.84	-0.65	-1.72	
9,243.00	90.60	87.20	6,095.71	4.96	3,125.41	3,125.05	2.72	0.76	2.61	
9,333.00	90.30	86.60	6,095.01	9.82	3,215.27	3,214.98	0.75	-0.33	-0.67	
9,425.00	90.50	88.20	6,094.36	14.00	3,307.17	3,306.94	1.75	0.22	1.74	
9,517.00	89.50	87.10	6,094.36	17.77	3,399.09	3,398.91	1.62	-1.09	-1.20	
9,608.00	89.40	89.00	6,095.24	20.87	3,490.03	3,489.89	2.09	-0.11	2.09	
9,701.00	89.80	89.40	6,095.89	22.17	3,583.02	3,582.89	0.61	0.43	0.43	
9,792.00	89.90	90.30	6,096.13	22.40	3,674.02	3,673.88	1.00	0.11	0.99	
9,884.00	90.90	91.30	6,095.48	21.12	3,766.00	3,765.83	1.54	1.09	1.09	

<b>Company:</b>	Bill Barrett Corp.	<b>Local Co-ordinate Reference:</b>	Well Anschutz State 4-62-2-1721BH2
<b>Project:</b>	Weld Co., CO	<b>TVD Reference:</b>	Well @ 4566.00usft
<b>Site:</b>	Sec.2-T4N-R62W	<b>MD Reference:</b>	Well @ 4566.00usft
<b>Well:</b>	Anschutz State 4-62-2-1721BH2	<b>North Reference:</b>	True
<b>Wellbore:</b>	Wellbore #1	<b>Survey Calculation Method:</b>	Minimum Curvature
<b>Design:</b>	Wellbore #1	<b>Database:</b>	EDMDBBW

Survey											
Measured Depth (usft)	Inclination (°)	Azimuth (°)	Vertical Depth (usft)	+N/-S (usft)	+E/-W (usft)	Vertical Section (usft)	Dogleg Rate (°/100usft)	Build Rate (°/100usft)	Turn Rate (°/100usft)		
9,976.00	89.60	90.20	6,095.08	19.91	3,857.99	3,857.78	1.85	-1.41	-1.20		
10,069.00	90.70	91.80	6,094.84	18.29	3,950.97	3,950.72	2.09	1.18	1.72		
10,164.00	91.20	92.30	6,093.26	14.89	4,045.90	4,045.58	0.74	0.53	0.53		
10,259.00	90.70	91.50	6,091.69	11.74	4,140.83	4,140.45	0.99	-0.53	-0.84		
10,354.00	91.70	90.90	6,089.70	9.76	4,235.79	4,235.36	1.23	1.05	-0.63		
10,442.00	92.30	90.40	6,086.63	8.76	4,323.73	4,323.27	0.89	0.68	-0.57		
10,502.00	92.30	90.30	6,084.22	8.39	4,383.68	4,383.20	0.17	0.00	-0.17		
10,594.00	90.90	88.30	6,081.65	9.52	4,475.63	4,475.16	2.65	-1.52	-2.17		
10,686.00	91.60	88.70	6,079.64	11.92	4,567.58	4,567.13	0.88	0.76	0.43		
10,778.00	89.60	87.70	6,078.68	14.81	4,659.52	4,659.11	2.43	-2.17	-1.09		
10,869.00	89.20	86.70	6,079.63	19.26	4,750.40	4,750.06	1.18	-0.44	-1.10		
10,962.00	89.60	87.10	6,080.61	24.29	4,843.26	4,842.99	0.61	0.43	0.43		
11,053.00	89.80	89.40	6,081.08	27.07	4,934.21	4,933.97	2.54	0.22	2.53		
11,145.00	90.00	89.80	6,081.24	27.71	5,026.21	5,025.97	0.49	0.22	0.43		
11,237.00	89.10	89.00	6,081.97	28.67	5,118.20	5,117.96	1.31	-0.98	-0.87		
11,329.00	89.40	89.30	6,083.17	30.04	5,210.18	5,209.95	0.46	0.33	0.33		
11,420.00	91.30	89.20	6,082.61	31.23	5,301.17	5,300.95	2.09	2.09	-0.11		
11,511.00	91.30	88.90	6,080.55	32.74	5,392.13	5,391.92	0.33	0.00	-0.33		
11,603.00	91.30	88.60	6,078.46	34.74	5,484.09	5,483.90	0.33	0.00	-0.33		
11,695.00	90.80	87.90	6,076.78	37.55	5,576.03	5,575.87	0.93	-0.54	-0.76		
11,787.00	91.30	87.80	6,075.09	41.00	5,667.95	5,667.84	0.55	0.54	-0.11		
11,879.00	91.10	87.60	6,073.16	44.69	5,759.85	5,759.79	0.31	-0.22	-0.22		
11,971.00	90.80	86.60	6,071.64	49.35	5,851.72	5,851.73	1.13	-0.33	-1.09		
12,063.00	90.70	86.80	6,070.43	54.64	5,943.56	5,943.64	0.24	-0.11	0.22		
12,155.00	89.90	86.00	6,069.95	60.42	6,035.38	6,035.54	1.23	-0.87	-0.87		
12,250.00	89.20	85.10	6,070.70	67.79	6,130.09	6,130.36	1.20	-0.74	-0.95		
12,345.00	88.10	84.40	6,072.94	76.48	6,224.66	6,225.07	1.37	-1.16	-0.74		
12,441.00	88.40	86.30	6,075.87	84.26	6,320.29	6,320.82	2.00	0.31	1.98		
12,536.00	90.20	88.10	6,077.03	88.90	6,415.16	6,415.75	2.68	1.89	1.89		
12,587.00	90.20	89.30	6,076.85	90.05	6,466.15	6,466.75	2.35	0.00	2.35		
12,678.00	90.00	90.50	6,076.69	90.21	6,557.15	6,557.74	1.34	-0.22	1.32		
12,770.00	90.10	91.20	6,076.61	88.85	6,649.14	6,649.69	0.77	0.11	0.76		
12,862.00	89.50	91.00	6,076.93	87.08	6,741.12	6,741.63	0.69	-0.65	-0.22		
12,953.00	90.00	91.60	6,077.33	85.02	6,832.09	6,832.56	0.86	0.55	0.66		
13,045.00	91.00	91.70	6,076.53	82.37	6,924.05	6,924.46	1.09	1.09	0.11		
13,138.00	89.80	91.60	6,075.88	79.69	7,017.01	7,017.36	1.29	-1.29	-0.11		
13,230.00	89.70	91.30	6,076.28	77.36	7,108.98	7,109.28	0.34	-0.11	-0.33		
13,320.00	93.40	93.80	6,073.85	73.36	7,198.83	7,199.05	4.96	4.11	2.78		
13,412.00	93.10	92.70	6,068.63	68.16	7,290.54	7,290.66	1.24	-0.33	-1.20		
13,504.00	93.10	92.60	6,063.65	63.91	7,382.30	7,382.34	0.11	0.00	-0.11		
13,595.00	91.30	91.00	6,060.16	61.05	7,473.19	7,473.16	2.65	-1.98	-1.76		
<b>Last Archer Survey</b>											
13,688.00	89.00	91.30	6,059.92	59.19	7,566.16	7,566.09	2.49	-2.47	0.32		
<b>PTB - Anschutz State 4-62-2-1721BH2</b>											
13,756.00	89.00	91.30	6,061.10	57.64	7,634.13	7,634.03	0.00	0.00	0.00		

<b>Company:</b>	Bill Barrett Corp.	<b>Local Co-ordinate Reference:</b>	Well Anschutz State 4-62-2-1721BH2
<b>Project:</b>	Weld Co., CO	<b>TVD Reference:</b>	Well @ 4566.00usft
<b>Site:</b>	Sec.2-T4N-R62W	<b>MD Reference:</b>	Well @ 4566.00usft
<b>Well:</b>	Anschutz State 4-62-2-1721BH2	<b>North Reference:</b>	True
<b>Wellbore:</b>	Wellbore #1	<b>Survey Calculation Method:</b>	Minimum Curvature
<b>Design:</b>	Wellbore #1	<b>Database:</b>	EDMDBBW

Survey Annotations				
Measured Depth (usft)	Vertical Depth (usft)	Local Coordinates		Comment
		+N/-S (usft)	+E/-W (usft)	
100.00	100.00	-0.34	-0.33	First Archer Survey
13,688.00	6,059.92	59.19	7,566.16	Last Archer Survey
13,756.00	6,061.10	57.64	7,634.13	PTB

Checked By: \_\_\_\_\_ Approved By: \_\_\_\_\_ Date: \_\_\_\_\_