

# COLUMBINE LOGGING

Scale: 5" / 100'  
Measured Depth Log

**Well Name** Anshutz State 4-62-2-1721 BH2 Vert

**Location** SWNW Sec 2 T4N R62W

**State** CO

**County** Weld

**Country** USA

**Rig Number** Nabors M22

**API Number** 05-123-38961

**AFE #** 18457D

**Region** DJ Basin

**Field** Wildcat

**Spud Date** 4/18/2014

**Drilling Completed** 4/28/2014

**Surface Coordinates** SWNW Sec 02-T4N-R62W  
1640' FNL 2280' FEL

**Bottom Hole Coordinates** Projected:  
SWNW Sec 02-T4N-R62W  
1640' FNL 500' FWL

**Ground Elevation** 4544'

**K.B. Elevation** 4566'

**Logged Interval** 4600' **To** 5621'

**Total Depth** 13756'

**Formation** Shannon

**Type of Drilling Fluid** LSND

## Operator

**Company** Bill Barret Corp.

**Address** 1099 18th Street, Suite 2300  
Denver, CO 80202

## Geologist

**Name** John Roesink

**Company** Bill Barrett Corp.

**Address** 1099 18th Street, Suite 2300  
Denver, CO 80202

## Other

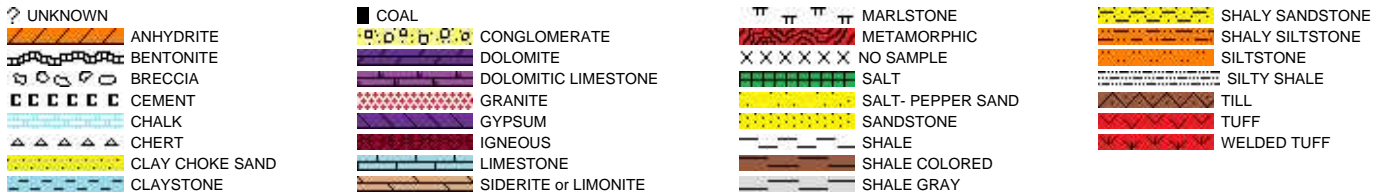
Charles Trodick

Senior Wellsite Geologist  
Columbine Logging Inc.

Mark Raimo

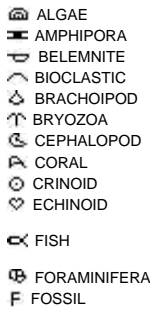
Wellsite Geologist  
Columbine Logging Inc.

## Rock Types



## Accessories

### Fossils



GASTROPOD

INOCERAMUS

OOLITE

OSTRACOD

PELECYPOD

PELLET

PISOLITE

PLANT REMAINS

PLANT SPORES

SCAPHOPOD

STROMATOPOROID

### Minerals

ANHYDRITIC  
ARGILLACEOUS

ARGILLITE GRAIN

BENTONITE

BITUMENOUS SUBSTANCE

BRECCIA FRAGMENTS

CALCAREOUS

CARBONACEOUS FLAKES

CHTDK

CHTLT

COAL - THIN BEDS

DOLOMITIC

FELDSPAR

FERRUGINOUS PELLET

FERRUGINOUS

GLAUCONITE

GYPSIFEROUS

HEAVY MINERAL

KAOLIN

MARCASITE

MARLSTONE

MICACEOUS

MINERAL CRYSTALS

NODULES

PHOSPHATE PELLETS

PYRITE

SALT CAST

SANDY

SIDERITE

SILICEOUS

SILTY

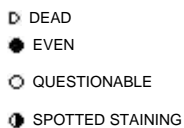
TUFFACEOUS

### Stringer



## Other Symbols

### Oil Show



### Porosity



ORGANIC

P PINPOINT

V VUGGY

### Engineering



FAULT

FORMATION TOP

GAS SHOW

OIL SHOW

MN DEPTH

MN DEPTH (RIGHT)

NORMAL FAULT

OVERTURNED STRATA

REVERSE FAULT

CASING

SIDEWALL CORE (LEFT)

SIDEWALL CORE (RIGHT)

SLIDE

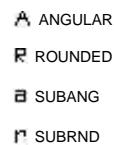
SURVEY

DRILL STEM TEST

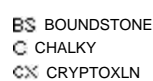
WIRELINE TESTED - LEFT

WIRELINE TESTED - RT

### Rounding



### Textures



E EARTHY

FX FINELYXLN

GS GRAINSTONE

L LITHOGRAPHIC

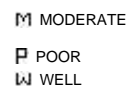
MX MICROXLN

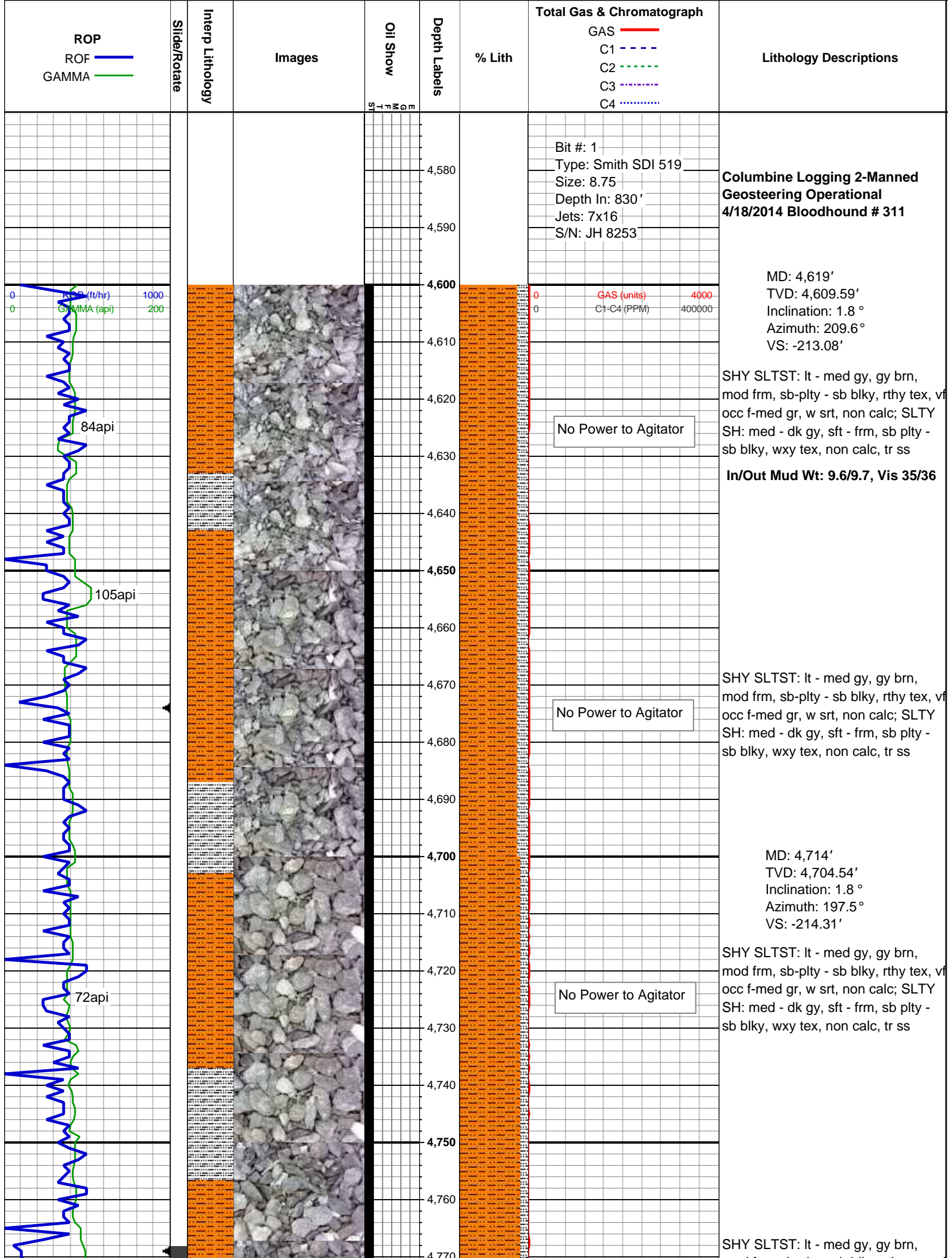
MS MUDSTONE

PS PACKSTONE

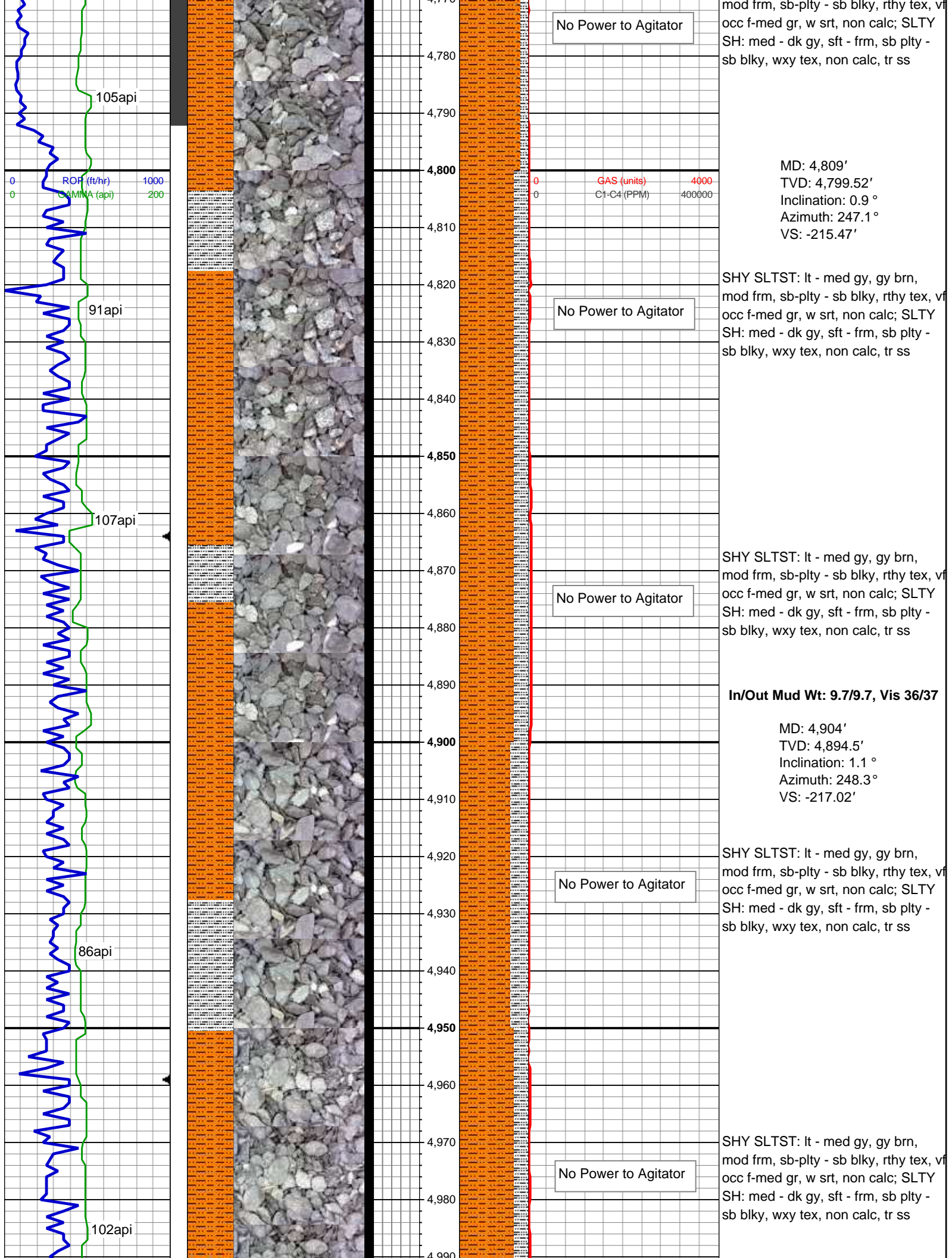
WS WACKSTONE

### Sorting

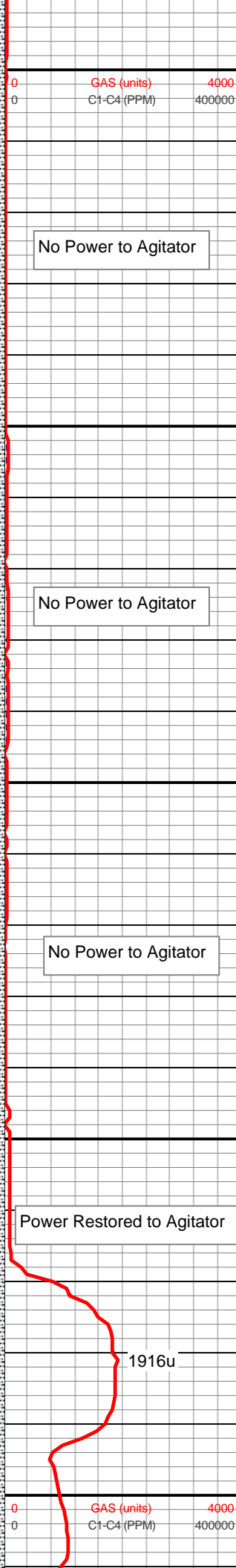
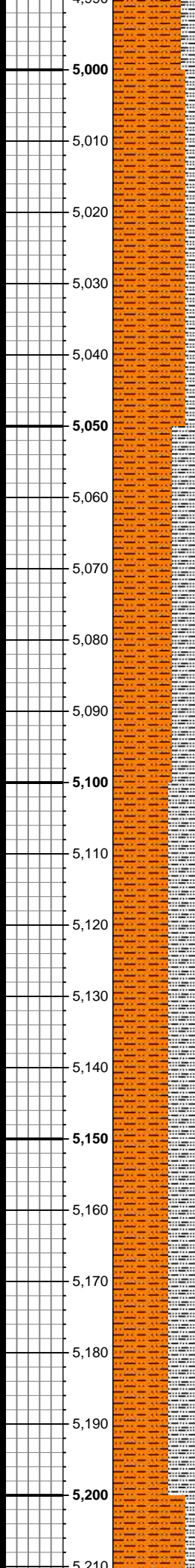
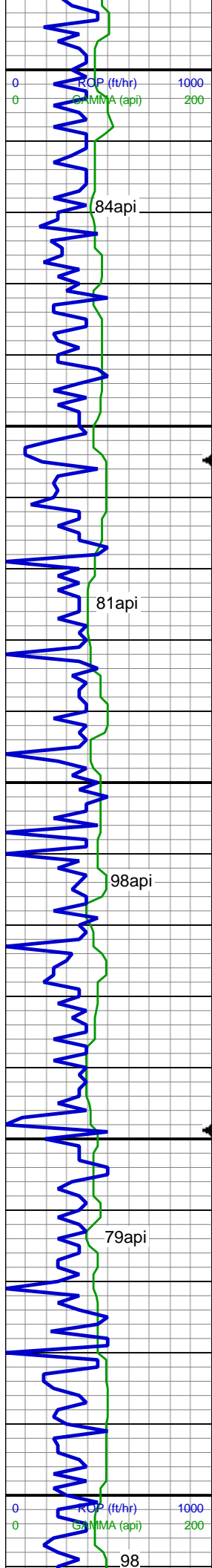












MD: 4,999'  
TVD: 4,989.49'  
Inclination: 0.7 °  
Azimuth: 251.7 °  
VS: -218.43'

SHY SLTST: lt - med gy, gy brn,  
mod frm, sb-plty - sb blkly, rthy tex, vf  
occ f-med gr, w srt, non calc; SLTY  
SH: med - dk gy, sft - frm, sb plty -  
sb blkly, wxy tex, non calc, tr ss

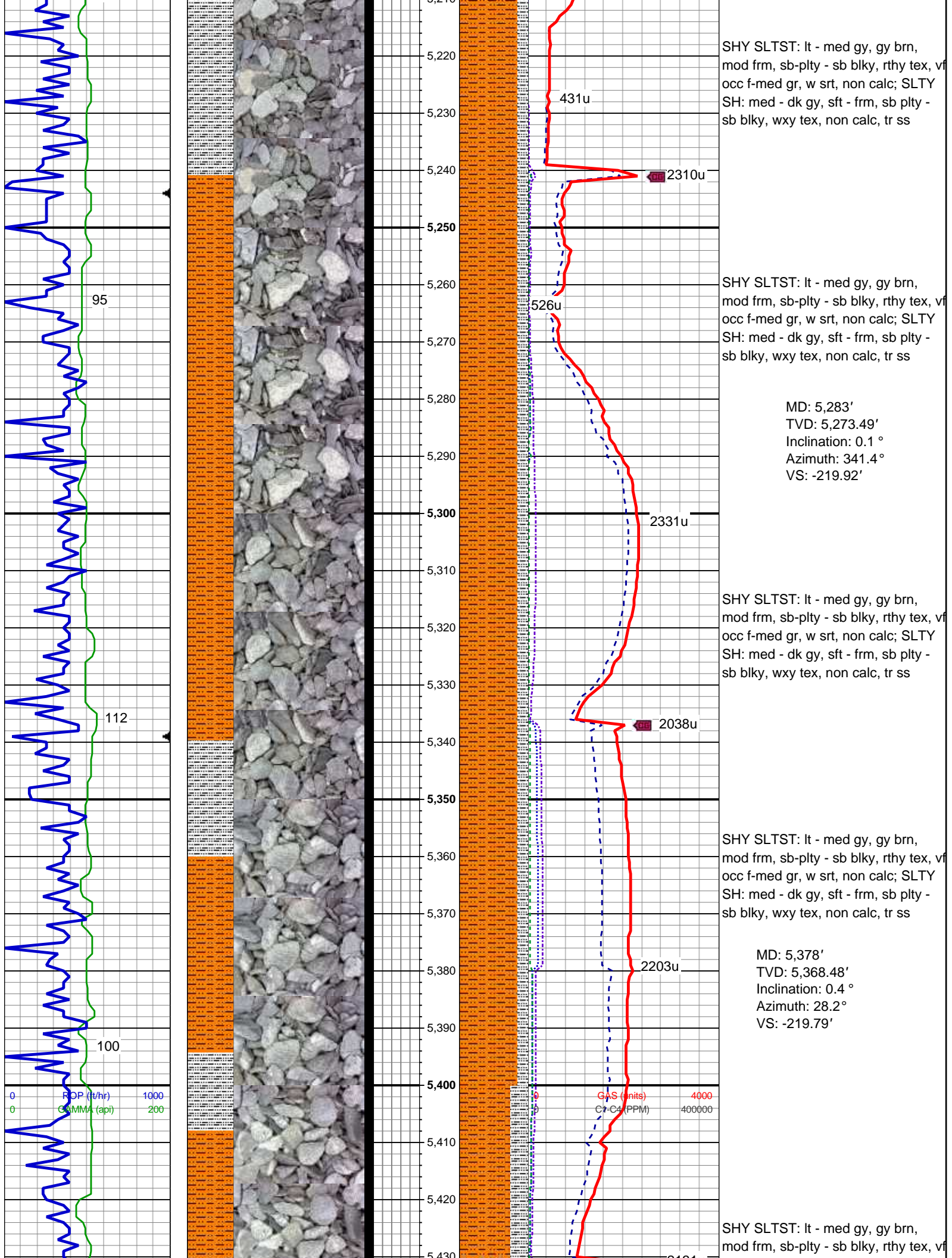
SHY SLTST: lt - med gy, gy brn,  
mod frm, sb-plty - sb blkly, rthy tex, vf  
occ f-med gr, w srt, non calc; SLTY  
SH: med - dk gy, sft - frm, sb plty -  
sb blkly, wxy tex, non calc, tr ss

MD: 5,094'  
TVD: 5,084.49'  
Inclination: 0.4 °  
Azimuth: 255.5 °  
VS: -219.3'

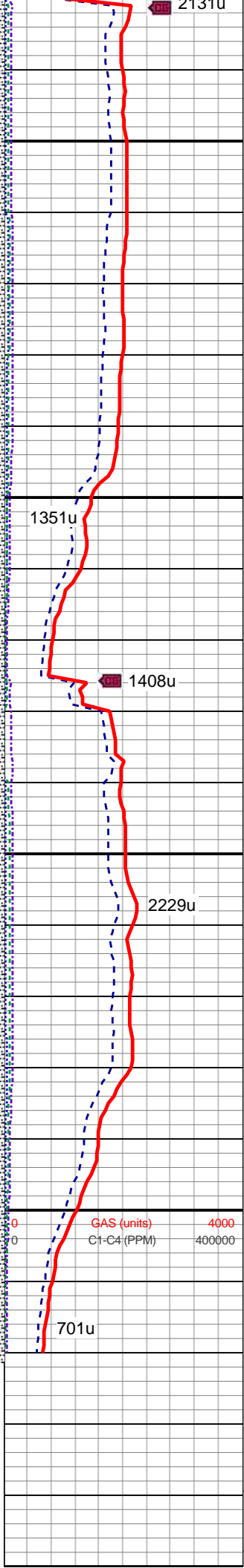
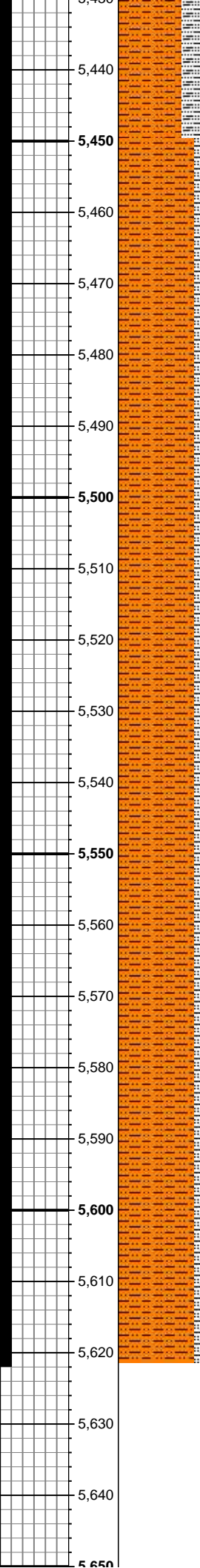
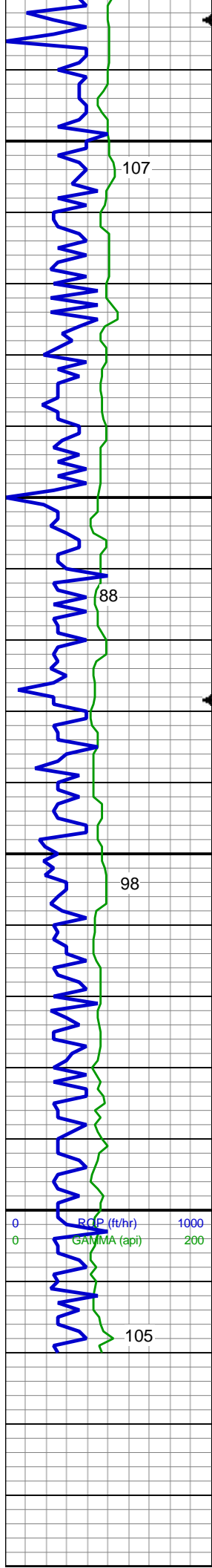
SHY SLTST: lt - med gy, gy brn,  
mod frm, sb-plty - sb blkly, rthy tex, vf  
occ f-med gr, w srt, non calc; SLTY  
SH: med - dk gy, sft - frm, sb plty -  
sb blkly, wxy tex, non calc, tr ss

SHY SLTST: lt - med gy, gy brn,  
mod frm, sb-plty - sb blkly, rthy tex, vf  
occ f-med gr, w srt, non calc; SLTY  
SH: med - dk gy, sft - frm, sb plty -  
sb blkly, wxy tex, non calc, tr ss

MD: 5,189'  
TVD: 5,179.49'  
Inclination: 0.2 °  
Azimuth: 234.7 °  
VS: -219.76'







occ f-med gr, w srt, non calc; SLTY  
SH: med - dk gy, sft - frm, sb plty -  
sb blk, wxy tex, non calc, tr ss

MD: 5,473'  
TVD: 5,463.48'  
Inclination: 0.4 °  
Azimuth: 16.1 °  
VS: -219.53'

SHY SLTST: lt - med gy, gy brn,  
mod frm, sb-plty - sb blk, rthy tex, vf  
occ f-med gr, w srt, non calc; SLTY  
SH: med - dk gy, sft - frm, sb plty -  
sb blk, wxy tex, non calc, tr ss

MD: 5,568'  
TVD: 5,558.48'  
Inclination: 0.5 °  
Azimuth: 26.4 °  
VS: -219.24'

SHY SLTST: lt - med gy, gy brn,  
mod frm, sb-plty - sb blk, rthy tex, vf  
occ f-med gr, w srt, non calc; SLTY  
SH: med - dk gy, sft - frm, sb plty -  
sb blk, wxy tex, non calc, tr ss

In/Out Mud Wt: 9.9/9.9 Vis 37/37

TOOH TO CHANGE MWD  
TOOLS: 16:00 MST ON 4/19/2013  
VERTICAL TD: 5621' MD  
DATA CONTINUED ON  
HORIZONTAL LOG

THANK YOU FOR USING  
COLUMBINE LOGGING INC.