



Kerr-McGee Oil & Gas Onshore LP

A subsidiary of Anadarko Petroleum Corporation

1099 18th Street
Denver, CO 80202
720-929-6000

July 16, 2014

Department of Natural Resources
Oil and Gas Conservation Commission
The Chancery Building
1120 Lincoln St., Suite 801
Denver, CO 80203

Re: **30 Day Certification Letter - 318A.e**
THOMSEN 1N-18HZ
Township 2 North, Range 65 West, Section 7: NE/4NE/4
Unit Spacing: 02N-65W-Sec 06 SW/4SE/4
02N-65W-Sec 07 W/2E/2
02N-65W-Sec 18 NW/4NE/4
Weld County, Colorado

Ladies/Gentlemen:

Kerr McGee Oil and Gas Onshore LP (“KMG”) hereby certifies to the Director that KMG owns one-hundred percent (100%) of the mineral rights in the proposed spacing unit. Therefore, KMG respectfully requests the Director to approve the boundary well.

If you have any questions or issues regarding this permit, please contact Cheryl Light at (720) 929-6461.

Very truly yours,

KERR-McGEE OIL AND GAS ONSHORE LP

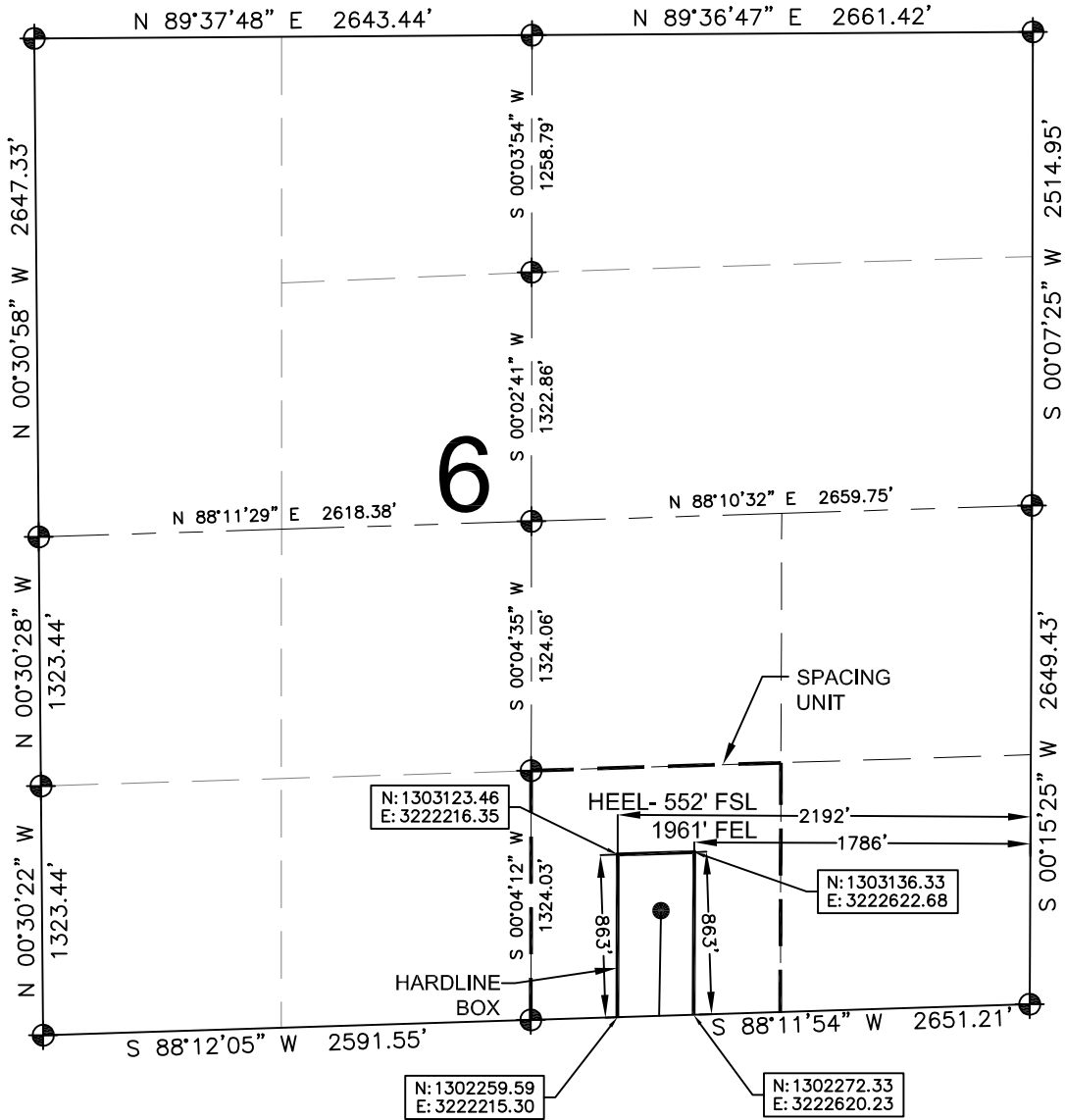
A handwritten signature in blue ink that reads "Ronett Powers".

Ronett Powers
Regulatory Analyst II

Enclosure

HARDLINE EXHIBIT: THOMSEN 1N-18HZ

SECTION 6, TOWNSHIP 2 NORTH, RANGE 65 WEST, 6TH P.M.



LEGEND

- ⊕ = EXISTING MONUMENT
- ⊙ = PROPOSED HEEL
- ⊕ = BOTTOM HOLE
- BH = BOTTOM HOLE

HEEL LOCATION

NAD83
 LATITUDE= 40.161893°
 LONGITUDE= 104.704084°

LATITUDE= 40°09'42.815"
 LONGITUDE= 104°42'14.703"

BOTTOM HOLE LOCATION

NAD83
 LATITUDE= 40.145130°
 LONGITUDE= 104.704698°

LATITUDE= 40°08'42.469"
 LONGITUDE= 104°42'16.912"

QRT/QRT SECTIONS WITHIN PATH OF THE HARDLINE

SWSE, SEC. 6

AVAILABLE FOOTAGE

6993'

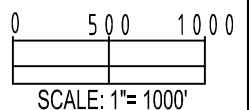
NOTES:

1. THIS DOCUMENT IS NOT A LAND SURVEY PLAT OR IMPROVEMENT SURVEY PLAT. THIS DOCUMENT DOES NOT REFLECT A FIELD SURVEY. SECTION BREAKDOWN, MONUMENTATION AND HORIZONTAL POSITIONS SHOWN ARE BASED ON THE HEEL AND BOTTOM HOLE LOCATION PROVIDED BY ANADARKO PETROLEUM CORPORATION



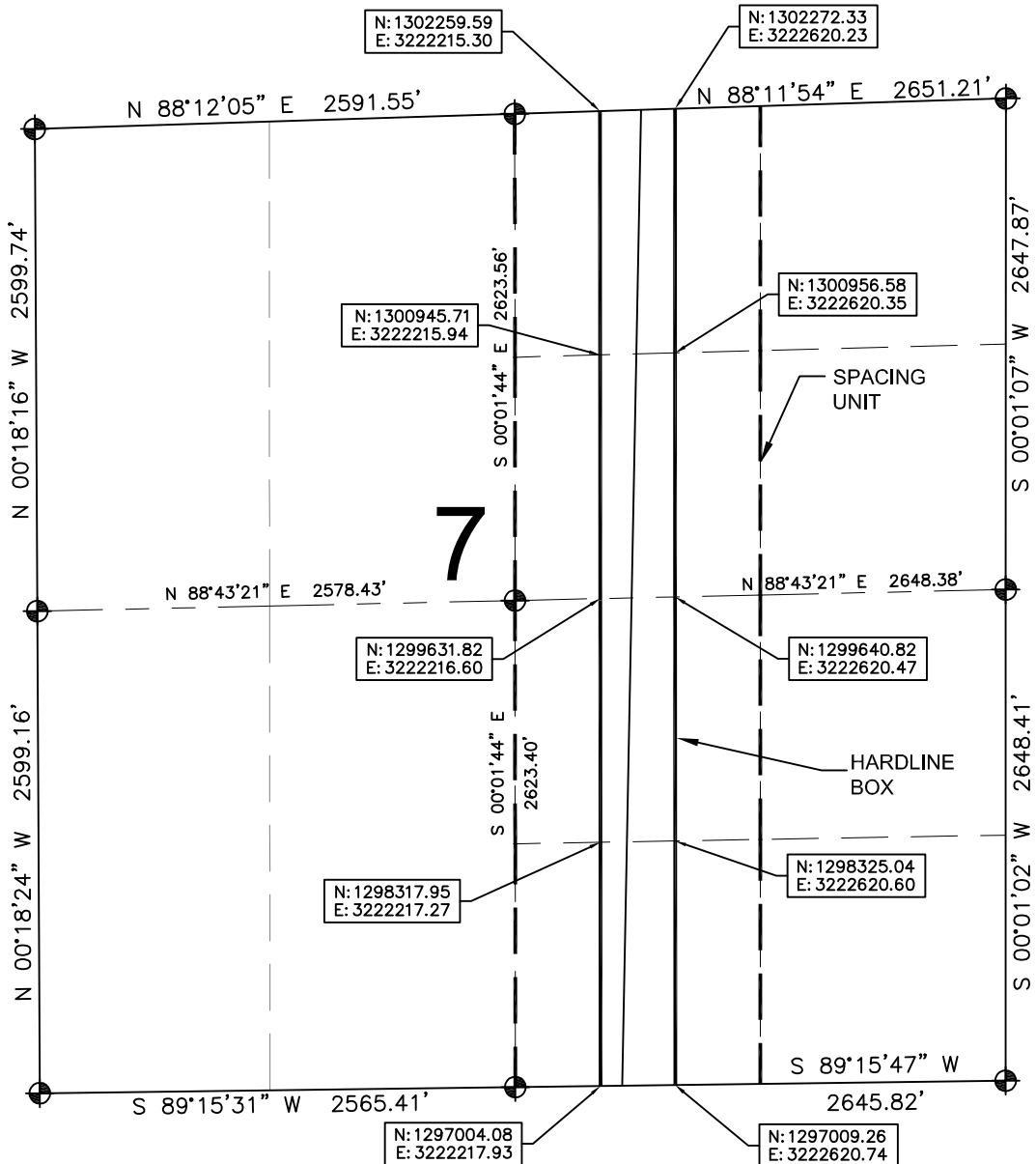
SHEET 1 OF 3

DRAWING DATE: 08-11-14		HEEL LOCATION: SW 1/4 SE 1/4, SEC. 6, T2N, R65W, 6TH P.M. WELD COUNTY, COLORADO	
BY: SMD	CHECKED: SMG		



HARDLINE EXHIBIT: THOMSEN 1N-18HZ

SECTION 7, TOWNSHIP 2 NORTH, RANGE 65 WEST, 6TH P.M.



LEGEND

- ⊕ = EXISTING MONUMENT
- ⊙ = PROPOSED HEEL
- ⊕ = BOTTOM HOLE
- BH = BOTTOM HOLE

QRT/QRT SECTIONS WITHIN PATH OF THE HARDLINE

- NWNE, SEC. 7
- SWNE, SEC. 7
- NWSE, SEC. 7
- SWSE, SEC. 7

NOTES:

- THIS DOCUMENT IS NOT A LAND SURVEY PLAT OR IMPROVEMENT SURVEY PLAT. THIS DOCUMENT DOES NOT REFLECT A FIELD SURVEY. SECTION BREAKDOWN, MONUMENTATION AND HORIZONTAL POSITIONS SHOWN ARE BASED ON THE HEEL AND BOTTOM HOLE LOCATION PROVIDED BY ANADARKO PETROLEUM CORPORATION

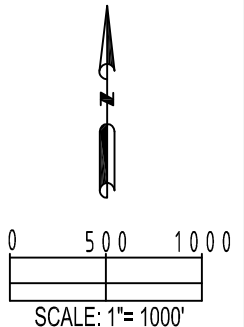
PREPARED BY:



Petroleum Field Services, LLC
7535 Hilltop Circle
Denver, CO 80221

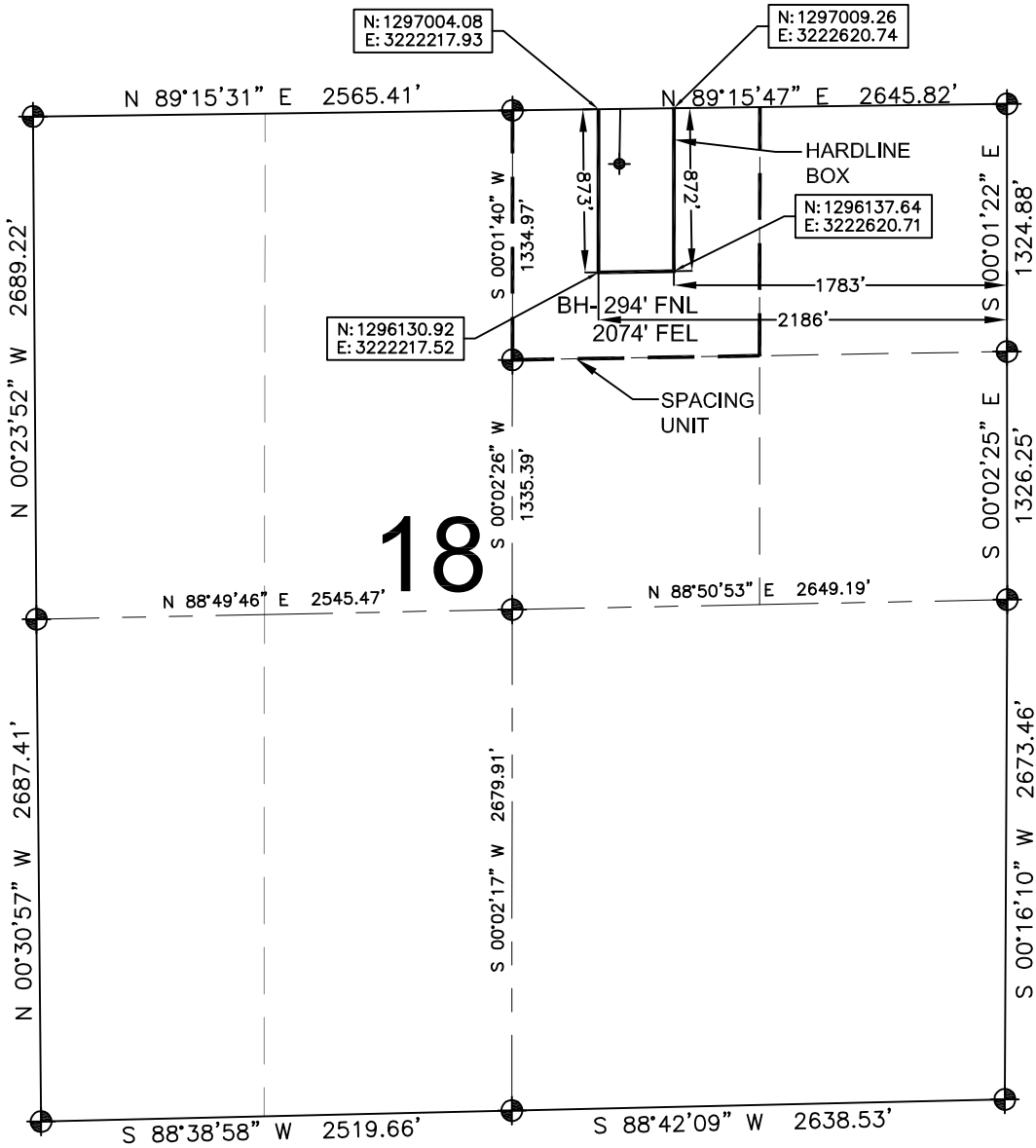
SHEET 2 OF 3

DRAWING DATE: 08-11-14		HEEL LOCATION: SW 1/4 SE 1/4, SEC. 6, T2N, R65W, 6TH P.M. WELD COUNTY, COLORADO	
BY: SMD	CHECKED: SMG		



HARDLINE EXHIBIT: THOMSEN 1N-18HZ

SECTION 18, TOWNSHIP 2 NORTH, RANGE 65 WEST, 6TH P.M.



LEGEND

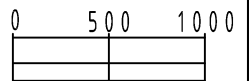
- ⊕ = EXISTING MONUMENT
- = PROPOSED HEEL
- = CALCULATED POSITION
- ⬮ = BOTTOM HOLE
- BH = BOTTOM HOLE

QRT/QRT SECTIONS WITHIN PATH OF THE HARDLINE

NWNE, SEC. 18

NOTES:

- THIS DOCUMENT IS NOT A LAND SURVEY PLAT OR IMPROVEMENT SURVEY PLAT. THIS DOCUMENT DOES NOT REFLECT A FIELD SURVEY. SECTION BREAKDOWN, MONUMENTATION AND HORIZONTAL POSITIONS SHOWN ARE BASED ON THE HEEL AND BOTTOM HOLE LOCATION PROVIDED BY ANADARKO PETROLEUM CORPORATION



SCALE: 1"= 1000'

PREPARED BY:



Petroleum Field Services, LLC
7535 Hilltop Circle
Denver, CO 80221

SHEET 3 OF 3

DRAWING DATE: 08-11-14		HEEL LOCATION: SW 1/4 SE 1/4, SEC. 6, T2N, R65W, 6TH P.M. WELD COUNTY, COLORADO	
BY: SMD	CHECKED: SMG		